



**Louisiana Department of Health
Informational Bulletin 12-16
Revised September 1, 2017**

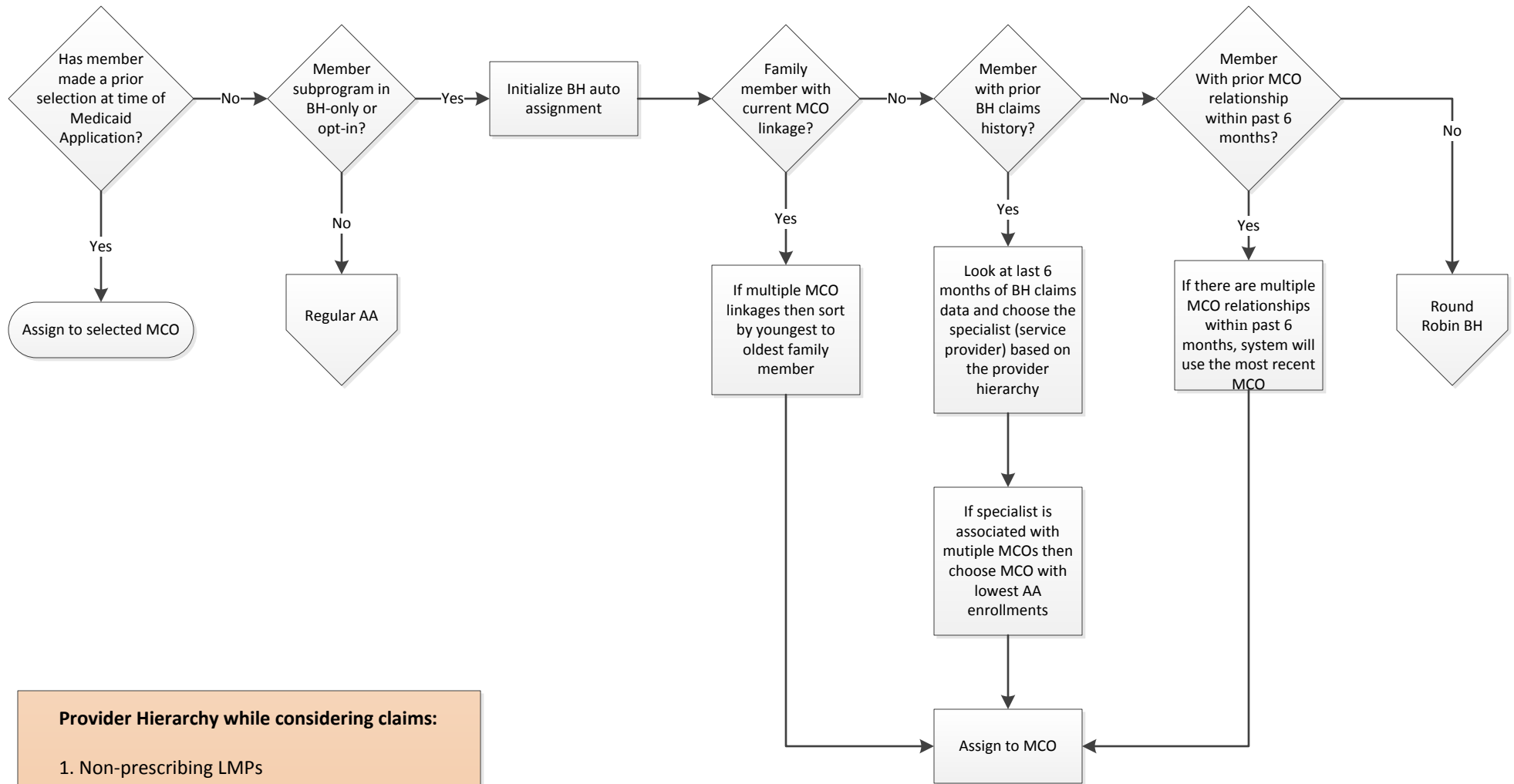
Algorithm for Auto-Assignment to a Health Plan for Specialized Behavioral Health Services – Effective 12/1/15

See pages two and three for flowchart depicting auto-assignment. Please note that the legend below has been provided for your reference.

Legend:

- AA - Auto Assignment
- BH - Behavioral Health
- LHC - Louisiana Healthcare Connections
- LMHP - Licensed Mental Health Professional
- MCO - Managed Care Organization
- UHC - United Healthcare

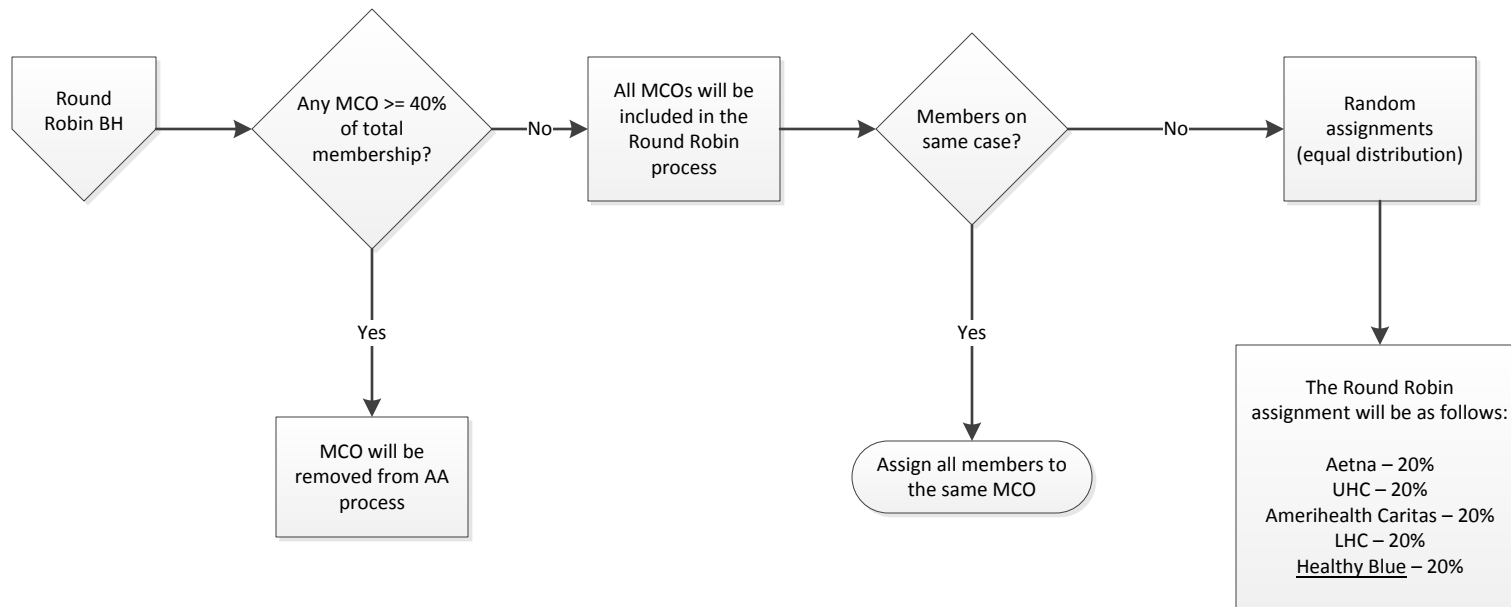
Flowchart Depicting the Specialized Behavioral Health Auto-Assignment Process Effective 12/1/15



- Provider Hierarchy while considering claims:**
1. Non-prescribing LMPs
 2. Psychiatrist
 3. Mental Health Rehab Agency
 4. Medical Psychologist
 5. Residential Programs
 6. Substance Use Residential
 7. Clinics
 8. Other BH Specialist

Note: BH auto-assignment will start running daily starting on 12/01/15. Before 12/01/15 there will be two runs on 11/07/2015 and on 11/27/2015.

Flowchart Depicting the Specialized Behavioral Health Auto-Assignment Process Effective 12/1/15



NOTES:

- * Separate counter will be used for the BH AA random assignments
- * Equal distribution of assignments to all plans