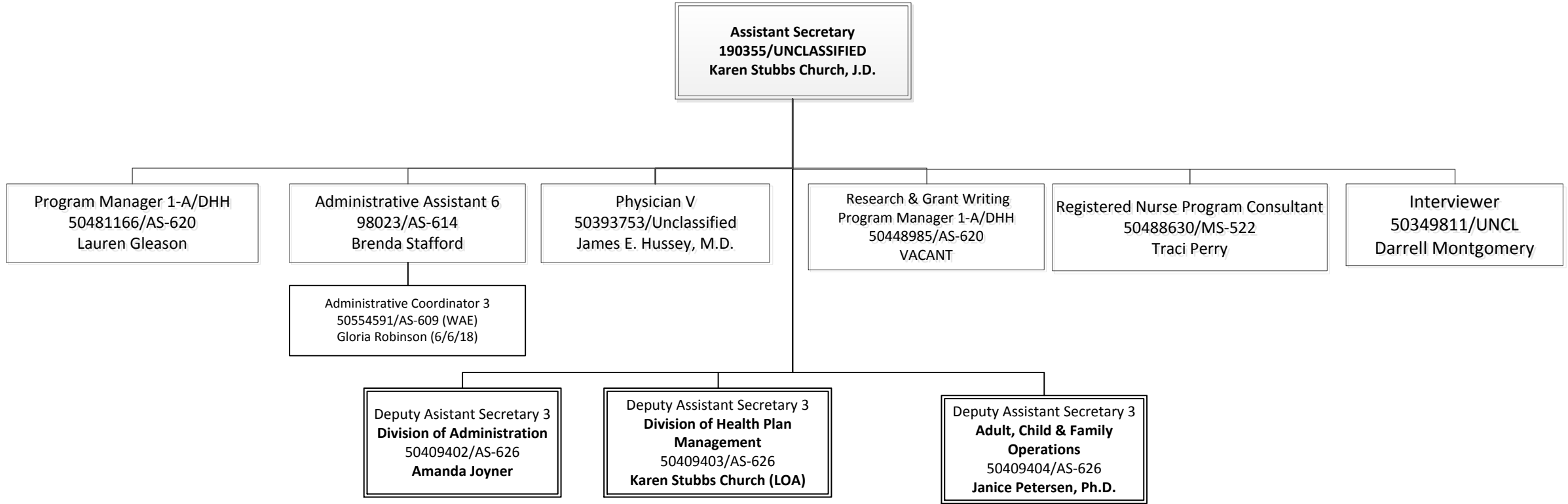
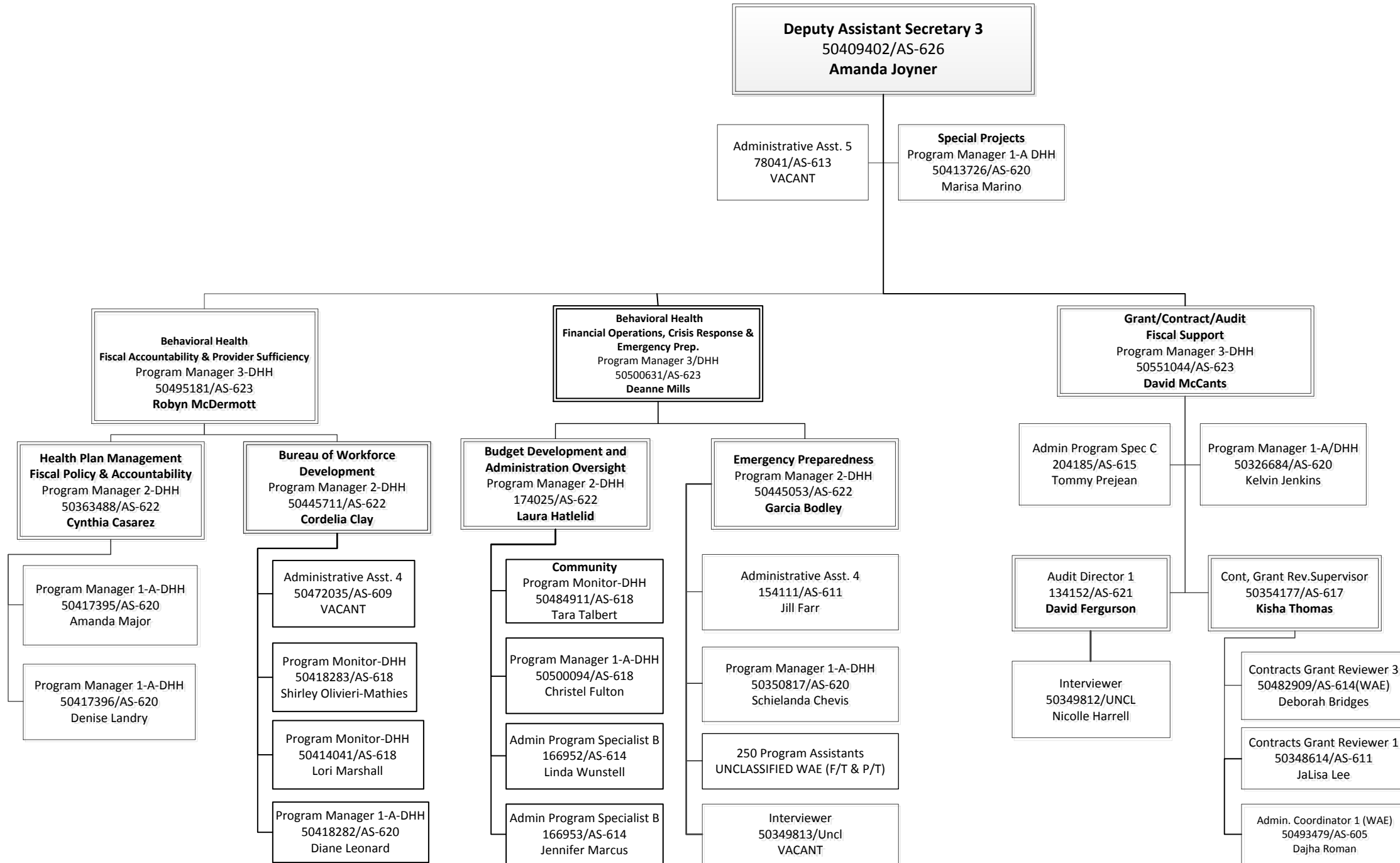


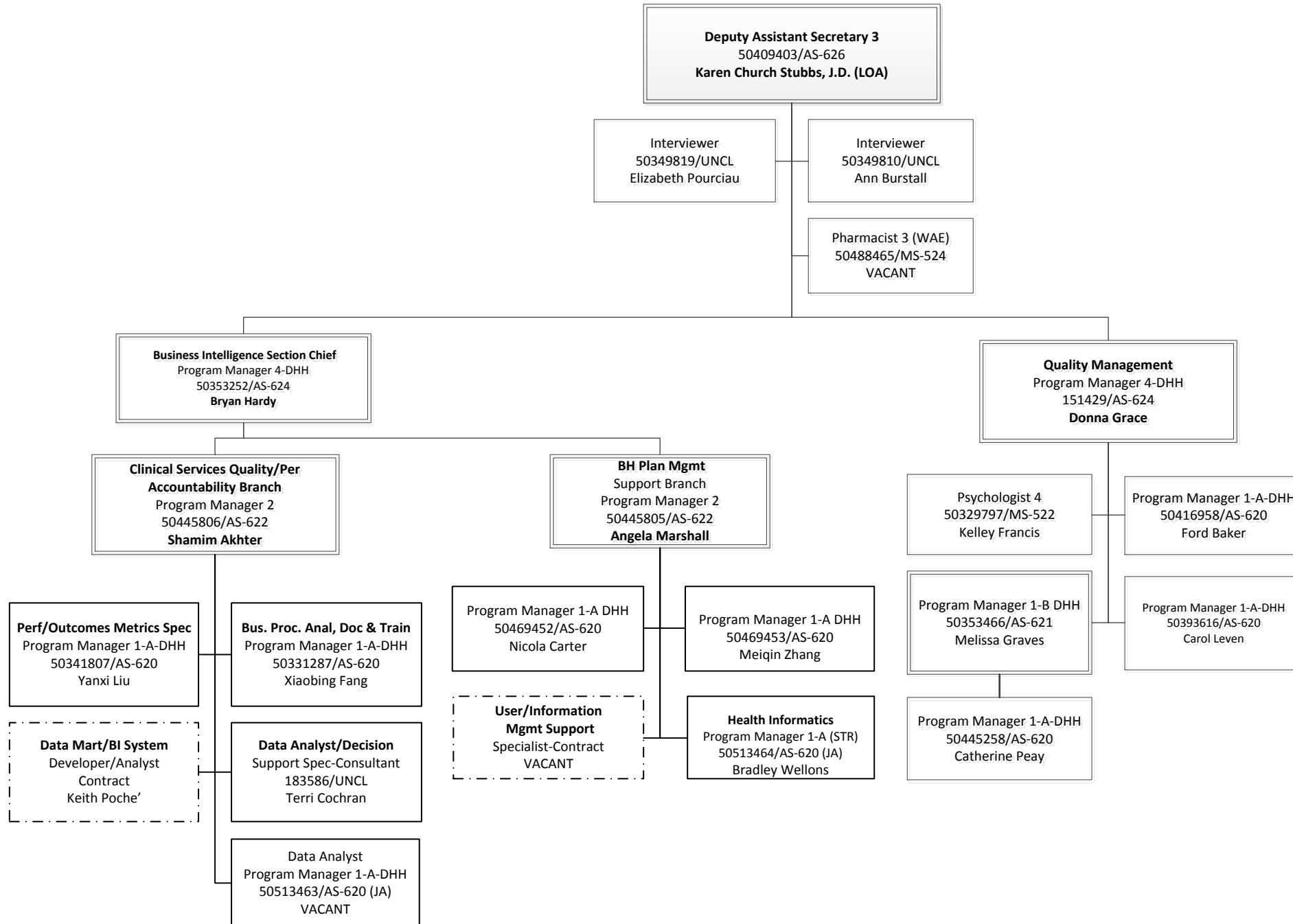
**DEPARTMENT OF HEALTH AND HOSPITALS
OFFICE OF BEHAVIORAL HEALTH
EXECUTIVE MANAGEMENT**



**DEPARTMENT OF HEALTH AND HOSPITALS
OFFICE OF BEHAVIORAL HEALTH
Behavioral Health Administrative Division**



**DEPARTMENT OF HEALTH AND HOSPITALS
OFFICE OF BEHAVIORAL HEALTH
Division of Health Plan Management**

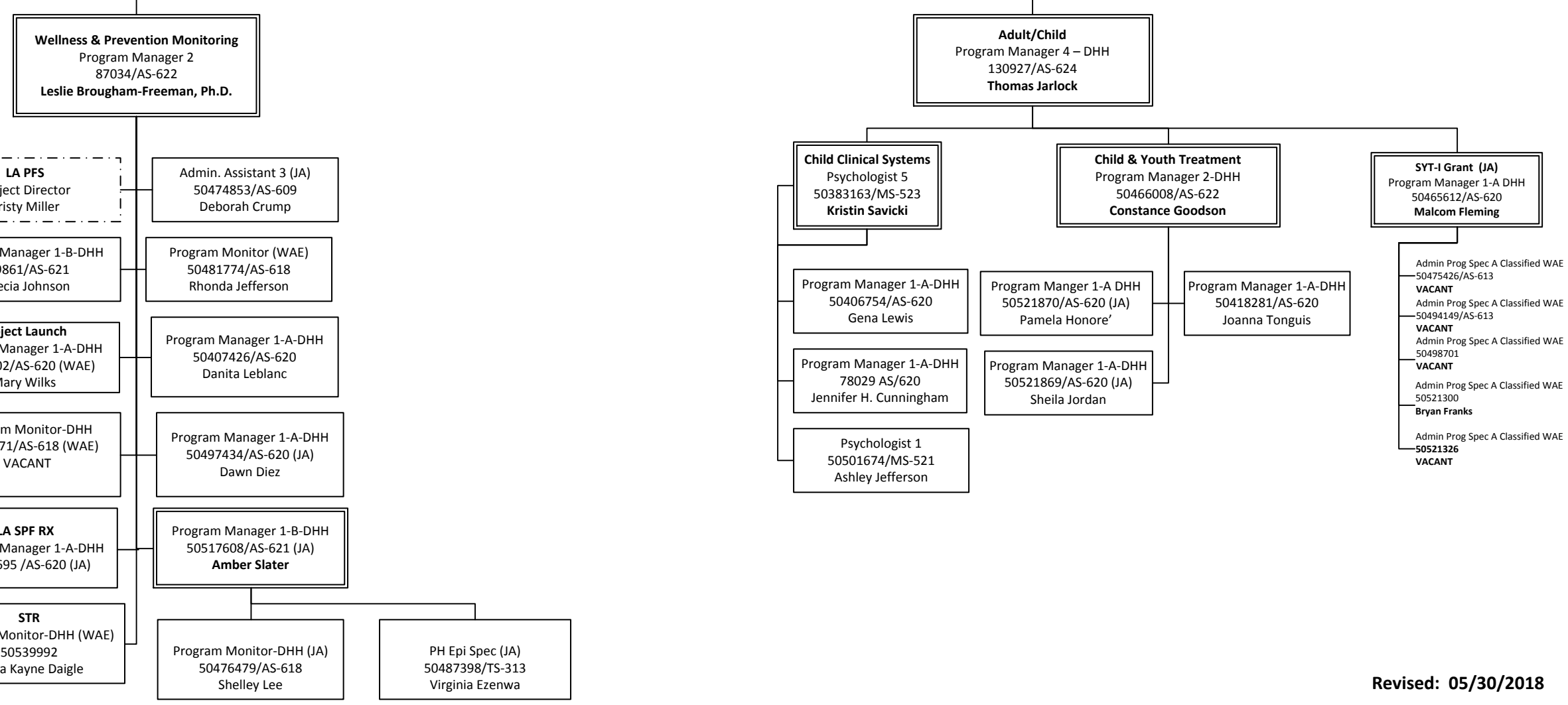


**DEPARTMENT OF HEALTH AND HOSPITALS
OFFICE OF BEHAVIORAL HEALTH
Adult, Child & Family Operations**

Deputy Assistant Secretary 3
50409404/AS-626
Janice Petersen, Ph.D.

Admin. Assistant 4
154106/AS-611
VACANT

Admin. Assistant 5
50331156/AS-613
Deanda Thymes



Revised: 05/30/2018

**DEPARTMENT OF HEALTH AND HOSPITALS
OFFICE OF BEHAVIORAL HEALTH
Adult, Child & Family Operations**

Deputy Assistant Secretary 3
Janice Petersen, Ph.D.

Consumer Recovery & Membership Services
Program Manager 4-DHH
50408164/AS-624
Charlene Gradney

Admin Program Specialist A
50480332/AS-613 (WAE)
VACANT

Program Monitor-DHH
50394212/AS-618 (WAE)
Alice Roelling

Program Monitor-DHH
50544045 AS-618 (WAE)
Frank Wesley

Client Rights
Program Manager 2-DHH
50340911/AS-622
Annette Arthur

Program Monitor-DHH
50479799/AS-618 (JA)
Javonna Jones

Program Manager 1-A-DHH
70568/AS-620
Jacqueline Porter

Program Monitor-DHH
50518758 (JA)
VACANT

Consumer Recovery
Program Manager 1-A-DHH
50497330/AS-620
Kenneth Saucier
(Detailed Out)

Consumer Surveyor Consultant
183585/UNCL
Pamela Jude

Consumer Surveyor
203186 (WAE)
Faye Curich

Consumer Surveyor
203190 (WAE)
VACANT

Consumer Surveyor
203193 (WAE)
VACANT

Consumer Surveyor
203195 (WAE)
VACANT

Consumer Recovery
Program Manger 2-DHH
167640/AS-622
Ann Darling

Social Worker 6-A
50363876/SS-418
Schicka Mitchell

Consultant
50350687/UNCL
Nancy Hughes

Program Manager 1-B
50548189/AS-621
Cynthia Bennett

Prog Mon-DHH
50548180/AS-618
Eliska Brooks (6/18)

Prog Mon-DHH
50548181/AS-618
VACANT

Prog Mon-DHH
50548182/AS-618
VACANT

Prog Mon-DHH
50548183/AS-618
VACANT

Prog Mon-DHH
50548184/AS-618
VACANT (JA)

Prog Mon-DHH
50548185/AS-618
VACANT (JA)

Prog Mon-DHH
50548186/AS-618
Anh Brown (6/18) (JA)

Prog Mon-DHH
50548187/AS-618
VACANT (JA)

Prog Mon-DHH
50548188/AS-618
VACANT (JA)

Prog Mon-DHH (WAE)
50531158/AS-618
Cathy Gabriel

Soc. Wrkr 3 (WAE)
50501666/SS-414
Michael Ibert

Prog. Mon-DHH
50548177/AS-618
Christina Barrett

Soc. Wrkr 4 (WAE)
50479609/SS-415
Judy Fazio

Prog. Mon-DHH
50548176/AS-618
Shalonda Randle

Prog. Mon-DHH
50548178/AS-618
Kristen Ventress

Revised: 05/30/2018

**Louisiana Department of Health
Office of Behavioral Health
Adult, Child & Family Operations**

Deputy Assistant Secretary 3
Janice Petersen, Ph.D.

Forensic
Program Manager 4-DHH
50411128/AS-624
Quinetta Womack (Detailed)

Program Monitor-DHH
50531376/AS-618 (JA)
Christopher Guillory

Forensic Program
Psychologist 3 (CPG)
50417940/MS-519
Leila Miller

Juvenile Justice
Program Manager 1-A/DHH
50501254/AS-620
Kimberly Catalon

Residential Monitoring
Program Manager 2-DHH
78027/AS-622
Kenneth Saucier (Detailed)
Quinetta Womack (Detailed Out)

Program Manager 1-A-DHH
50396704/AS-620
Carol Foret

Program Manager 1-A-DHH
54173/AS-620
Robert Henson

Program Manager 1-A-DHH
50339230/AS-620
Ivory Wilson

STR
Program Manager 1-B (JA)
50539990/AS-621
Megan Fontenot

Prog. Monitor-DHH (JA)
50539987
Michelle Doran

Admin. Asst. 3 (JA)
50539991/AS-609
Misa Gosserand

Admin Program Spec A
50551084/AS-613
Brent Ambacher

Revised: 05/30/2018