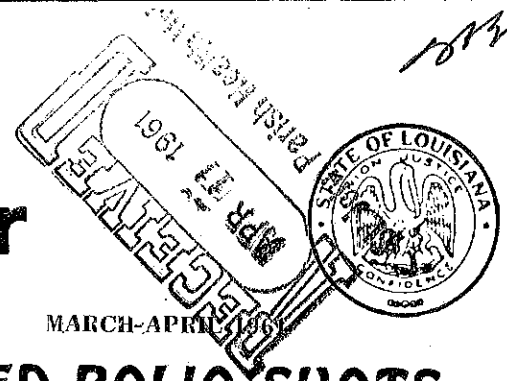


LOUISIANA

Public Health

Newsletter

LOUISIANA STATE BOARD OF HEALTH



"BABIES AND BREADWINNERS" NEED POLIO SHOTS

Theme Sparks 1961 Immunization Drive



DR. WILLIAM W. FRYE, dean of the Louisiana State University medical school, will be a featured speaker at the LPHA meeting. His topic is "Modern Advances in Parasitology."



DR. ARTHUR L. SEALE, superintendent of Central Louisiana State Hospital, will speak on "The Community and Mental Health" at the nurses' section of the LPHA annual meeting, Friday, April 27.

President John F. Kennedy announced March 13 that he was requesting a one million dollar appropriation to purchase oral polio vaccine when it becomes available because of its potential for combatting epidemics. At the same time, however, he noted that Dr. Luther L. Terry, Surgeon General of the Public Health Service, had informed him that "very little oral vaccine will be available for this summer."

"It becomes more important than ever that every effort be made to use the present Salk vaccine. I am happy to endorse wholeheartedly the vaccination drives being undertaken this year by the Public Health Service, the medical profession, and other groups," President Kennedy said.

Prior to the White House announcement, the Louisiana State Board of Health already was headed for a statewide immunization program aimed at "Babies and Breadwinners," the two major population groups most seriously in need of protection.

In statements to the medical journals, press, health units and other

(Continued on page 6)

Varied Program Set For LPHA Meet Apr. 27, 28 at Alexandria

Grab your bags, it's time to head for Alexandria for the LPHA Convention, April 26-28. If you haven't made reservations and packed your bags, you had better hurry because the program is all packed with interesting speakers and events, ready to roll at Bentley Hotel.

Dr. John Bruce and his local arrangements committee are busily completing arrangements to make your stay enjoyable, but it is up to you to make room reservations directly with the hotel.

Registration begins Wednesday afternoon, from 4 to 8, and continues Thursday from 8 a.m. to 4 p.m. The opening-day schedule also includes meetings of the governing council at

2 p.m. and the nominating committee at 4 p.m.

Speakers for the general session Thursday morning, presided over by president Miss Lucille Godelfer, will be Dr. William W. Frye, dean of LSU Medical School, who will talk on "Modern Advances in Parasitology"; Dr. James H. Steele, chief of the veterinary public health section at the Communicable Disease Center in Atlanta, Ga., whose topic is "Veterinary Medicine and Public Health", and Bryan Blalock of Marshall, Tex., goodwill ambassador for the Borden Company.

For the first time in LPHA history, talks will be confined to the morning

(Continued on page 6)



The Louisiana State
Board of Health
Hon. Jimmie H. Davis
Governor

William J. Rein, M.D.
State Health Officer

M. E. Kossack, M.S.P.H., Director
Iris Day, Editor
Duplication process supervised by
Louis Bernier

The NEWSLETTER is published monthly by and for the employees of the Louisiana State Board of Health through the Division of Public Health Education, Louisiana State Office Building, 325 Loyola Ave., New Orleans 12.



J. C. Watson, chief, sanitarian for Jefferson Parish Health Unit, recently was promoted to Lieutenant-Colonel in the U. S. Air Force Reserve. He is director of medical administration for the 637th U. S. Air Force Reserve Hospital in New Orleans, and is currently serving as president of the National Society of Professional Sanitarians.

HONORS: DR. LEO TUCKER, director, St. Landry, was named to the medical advisory board of directors of the Cerebral Palsy clinic... **MRS. LILY HEBERT**, Eunice PHN, was re-elected president of the St. Landry-Evangeline Registered Nurses Association... **DR. BEN FREEDMAN**, director, preventive medicine, and **MRS. MAUDYE MYRICK**, EBR nurse, and president, Louisiana P-TA, were panelists at the La. Conference of Social Welfare... **MRS. LOUISE RABALAIS** and **MRS. DORIS MC CARDELL**, St. Landry PHNs, received awards for volunteer service as public education co-chairmen of the St. Landry Parish Heart Council during 1960.

"MIKE" KOSSACK, director, health education, is "Grandpa" again - now has two grandsons, two granddaughters as home movie subjects.

Word has been received of the retirement of **MYRTLE WHITLOCK RUTLEGE**, at Hillsboro, Ill., after 42 years of public service... she is remembered here for her work as a public health nurse from 1937 to 1944.

MRS. MARION WOLF, Lafayette regional nutritionist, and **MRS. ELEANOR WOOSTER**, Allen Parish PHN, were reminiscing at lunch in a tourist court when a little girl, about 5 years



Mrs. Elizabeth Hartt, PHN, Beaugard Parish Health Unit, is shown receiving an award in recognition of outstanding services from **Dr. Harold Chastant**, president-elect of the Louisiana Heart Association. Mrs. Hartt is educational chairman for the Beaugard Parish Heart Council.

old, came into the lunchroom, recognized Mrs. Wooster, and rushed out of the room. Within a few minutes the child returned with an even smaller youngster in tow. "See," she said triumphantly, "THIS is the nurse who gives me my shots!" Ah, fame!

MISS LILLIAN JEFFERS, nursing director, and **MRS. MERCEDES MUNSON**, consultant nurse in mental retardation, enjoyed the privilege of hearing **MISS VIRGINIA ARNOLD, R.N.**, recently invited to address Tulane's public health nursing class. **MISS ARNOLD**, well-known in nursing circles, is Assistant Director in the Department of Medical and Natural Sciences, The Rockefeller Institute, New York.



SYMPATHY is expressed to **MARGUERITE GRASSER**, chest X-ray unit, N. O. Charity hospital, death of brother; to **CURTIS ARMOND**, chest X-ray unit, N. O. Charity hospital, death of mother; and to **MACEDONIA WILSON**, Washington health unit, death of brother.

ALL ABOUT US



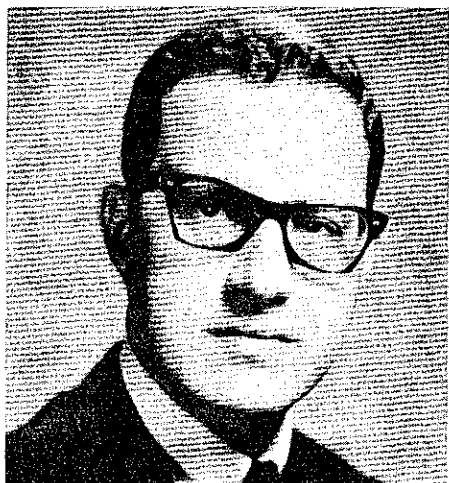
Miss Katherine Evans

A recent visitor to Central Office was **MISS KATHERINE EVANS**, new director of public information, Tuberculosis Association of Greater New Orleans.

And a warm welcome is extended to Central Office's own new personnel: **DIANE BORDELON**, steno-clerk, Training Center; **KARIN BALDZER**, steno-clerk, crippled children's services; **KATY ORR**, steno-clerk, dental and school health; and **NORMA KELLER**, steno-clerk, MCH.

Spring fever just naturally leads to thoughts of summer vacations.... **MRS. ETHEL RUCK**, chronic disease and TB section, is looking forward to a two-month guided tour of Europe, starting with a jet flight to Scotland.

Findley Raymond Is LTA Executive Director



W. Findley Raymond, 29, assumed the position of Executive Director of the Louisiana Tuberculosis Association on March 6, according to W. W. Coulter, Jr., M.D., president of the voluntary health agency.

On the staff of TAGNO, the Tuberculosis Association of Greater New Orleans as Director of Public Information for the past 8 and a half years, Findley is well-known to health department people through his long editorship of the L.T.A. BANGLE NEWS and as Chairman of the Health Education Section of the L. P. H. A. last year.

Born in Wichita, Kansas, he has resided in New Orleans since 1952. He has been active in many New Orleans and state level organizations. He is the current president of the Adult Education Association of Louisiana.

He has been a member of the boards of the Louisiana League for Nursing, the Foreign Policy Association of New Orleans, the U.N.E.S.C.O. Council of New Orleans, the L.P.H.A., the Southern Tuberculosis Conference, and served as a member of the material committee of the National Conference of Tuberculosis Workers for two years. He was the coordinator and moderator of a weekly television program for WYES-TV in 1958 and was also the Chairman of the New Orleans World Politics Discussion Program for several years.

Guest Editorial

Education Essential Tool In Sanitation Progress

MILTON E. KOSSACK

(Reprinted from Health Officers' News Digest)

It is generally acknowledged among public health personnel that everyone working in public health is engaged in some form of health education. Unfortunately, there are some who merely render lip service to this premise. And then there are others who, when the chips are down, and they are confronted with a job having educational implications, throw the entire matter into the laps of those of us who are called health educators.

Those of you who have been trained to be specialists in the field of sanitation must prepare yourselves to pass along what you know about sanitation—to educate the persons whom you supervise in an official capacity and to bring to the public essential information about your program and what they can do to help make it more effective.

Failure to bring information to the public about important parts of your program may result in an apathetic public, whereas a purposeful, well-directed educational effort could bring about an enlightened, aroused citizenry.

How often and how effectively you utilize the mass media, how judiciously you employ health education adjuncts such as pamphlets, posters, films and exhibits may spell success or failure. Your salary and the budget of your health department may depend upon a favorable tax vote on an election ballot, which can be conditioned by your educational activity. Your routine reporting to official bodies; whether or not you produce a readable annual report; how often you appear before civic organizations may, in the long haul, make the difference between an increase in local and state public health appropriations.

In this highly competitive age in which we live, governmental and other agencies are engaged in a never-ending struggle for attention. A job well done may give you a feeling of personal satisfaction, but it is essential that the well-done job be well-publicized to gain for it the notice it deserves.

In the tremendously important job of caring for the community's sanitation, no effort should be spared to enlighten the public and to enlist its support for the program.

11 Cases Investigated In Trichinosis Outbreak

An outbreak of trichinosis in a central Louisiana community in February was investigated by the Rapides Parish Health Unit and the section of epidemiology, according to Dr. Charles T. Caraway.

Until this outbreak, only 13 cases were reported in Louisiana in a 10-year period. All 11 cases involved were traced to a common source—raw smoked sausage made from one hog. No one other than those who were ill had tasted the raw sausage. The incubation periods ranged from 1 to 19 days with a mean of 11.6 days.

According to Dr. Caraway, investigators learned that the infected hog had roamed the community, mixing with neighboring animals. It is believed that the hog had eaten the flesh of infected dead animals.

GERMAN ACCENT

Pierre the Pelican is being sent to young parents in West Berlin.

According to the Pierre the Pelican News Bulletin, parents in East Berlin also want the monthly messages and have suggested all kinds of ways by which they might get them. Interest in the program was initiated by reading Pierre messages over Radio Free Berlin.

Agencies Co-sponsor Home Nursing Classes

The Louisiana State Board of Health, the American Red Cross and the Louisiana State Civil Defense Agency are jointly sponsoring a program to teach home care of the sick and injured throughout Louisiana. Under the plan, which is the first of its kind ever undertaken on a state-wide basis by the three agencies involved, the Red Cross will train specially selected public health nurses in every parish to teach the skills of home nursing in their communities. Civil Defense will then join Red Cross in promoting the program and recruiting for classes in all the parishes.

It is hoped that at least one member of every family in the state will be able to learn these home nursing skills. In the event of a natural or man-made disaster, when it might be impossible to get sick and injured people to hospitals immediately, such training would be imperative; and, with the number of chronically ill growing as our population ages, it is impossible to provide hospital care for everyone, therefore, hundreds of people will, and are, being taken care of at home.

The first 3-day course given in New Orleans was attended by fifteen nurses: Geneva Barry, Jefferson; Faye Smith, Tangipahoa, Nora Dumas, St. Charles; Rubye C. Harlan and Lela Knight, Washington; Elma Hughart, East Jefferson; Juanita Couste, St. Bernard; Esther Wood, Plaquemines; Bernadette McClelland, and Barbara Kenny, St. Tammany; Lorraine Oubre, St. John; Ella Roussell, St. James; Edna R. Murray and Helena Hennessey, Lafourche, and Elda Hurley, Terrebonne.

Attending the Lafayette course were Edith Fontan, Lorraine Istre, Roma Allen and Frankie Ford, Lafayette; Doris McCardell and Louise Rabalais, St. Landry; Laura Bell Porche, St. Mary; Christine Ducote, Acadia; Lella O'Brien, St. Martin; and Lou Trahan and Freida Broussard, Vermilion.



Six of the public health nurses who completed the first instructors course for the care of the sick and injured are shown "in class". (L-R) Geneva Barry, Elma Hughart, Esther Wood, Juanita Couste, Barbara Kenny and Bernadette McClelland.

Shown here discussing final details of Health Nursing, State Board of Health; Mrs. the home nursing care program at the Red Cross Chapter in New Orleans, are the people who will have the prime responsibility for it: (L-R) Miss Lillian Jeffers, director, Division of Public Health Nursing, State Board of Health; Mrs. Peggy Richards, coordinator of women's activities, Civil Defense Agency and Mrs. Jessie B. Hickey, director of nursing services, New Orleans Chapter, American National Red Cross.



It Pays to be Curious

(See page 8)

While the bride-to-be ponders cookbooks and the prospective bridegroom struggles over budgets, they both better study up on the marriage requirements in Louisiana, or they may find themselves unable to get a marriage license.

1. Both parties to a marriage must have certified copies of their original birth certificates. True False
2. Blood tests are required for both parties. True False
3. Medical examinations must be performed by Louisiana physicians. True False
4. The person's race must be indicated on his birth certificate. True False



D-4660

HAVE YOU HAD POLIO SHOTS ?



How did she do it? Vergie Harlow's technique is so painless that both little girls actually seem to enjoy getting their immunization shots. Does Jackson Parish Health Unit have a secret "smile" weapon?

THE GENTLE LEGIONS

Public health workers who work with, and may themselves be members of, the voluntary health agencies will be interested in a new book, "The Gentle Legions," by Richard Carter (Doubleday and Co. Inc.) called "the first book-length appraisal of the big, voluntary health organizations."

We're Proud of these Letters!

Like Perry Como, the health department "gets letters."

From WTIIX, New Orleans:

Radio station WTIIX is happy to report its effort on behalf of the La. State Board of Health during the year 1960.

Total number of announcements broadcast during the year 332. Total monetary evaluation \$1,540.48.

...Radio Station WTIIX ran 63 spots during the summer months on polio, and during the special immunization program for children in Plaquemines parish all La. State Board of Health copy was about the importance of diphtheria shots...

May we at WTIIX say thank you Mr. Kossack for your wonderful cooperation throughout the year of 1960, and may we at this time renew our pledge to be of service in the public interest.

From Dr. Marie S. Dunn, associate professor, Northwestern State College:

SPRING ROUNDUPS

Hundreds of Louisiana preschoolers are attending the annual spring roundup in communities all over the state—Allen Parish Health Unit held its helpful conference for parents, and children entering school for the first time, at the parish courthouse.

Receipt of two films recently booked on "short notice" reminds me once again of my need to express appreciation to you for your excellent service. Your thoughtfulness in sending these by Trailway Bus to insure their prompt arrival made it possible for me to begin a graduate class on a successful note.

From Mrs. Juanita Cochran, Homemaking Teacher, Holly Ridge High School:

Let me express my sincere thanks for the many helpful bulletins you sent on nutrition, diet and health. They did much to improve my educational program with homemaking students and adults.

Miss Marlene Bond, Monroe, La., and Mrs. Frazier Bailier of Rayville-Richland Health Dept. are two very devoted persons to their work. They were extremely helpful to me and I appreciate their sincere efforts.

Thank you again for being so helpful.

PH Workers Invited To Swim Pool Conference

Public health workers are invited to attend the 5th Annual Swimming Pool Conference, Saturday, April 29, to be held in the Kendall Cram room at Tulane University Center starting at 8:30 a.m. The event is co-sponsored by the state board of health division of public health engineering, Tulane's department of civil engineering, and the Louisiana Swimming Pool Association.

Highlights of the program will include a discussion of waterborne diseases by Dr. Kenneth W. Newell, visiting professor in epidemiology at Tulane university school of medicine; the showing of a new film on heating residential swimming pools, a discussion of competitive swimming as an asset to a public pool by Lowell Damonte, coach of the Monk Simons Memorial Swimming Pool at Tulane, and a panel discussion moderated by the well-known New Orleans newspaperman, Hermann Deutsch.

There will also be a talk on disinfection of swimming pools, by a member of the public health engineering division, demonstrations of mechanical resuscitators and direct artificial respiration, a discussion of water safety — topics designed to interest both public and private pool operators, according to John E. Trygg, engineering director.

Public health workers do not have to pay the \$1 registration fee. Lunch tickets are \$1.50 apiece.

"This meeting is not authorized for travel allowance," Mr. Trygg cautions state board of health employees.

Members of the program committee are Allen King, president of the Louisiana Swimming Pool Association; A. B. Ritter, vice-president; Dr. Frank MacDonald, Tulane professor of civil engineering, and Lowell Damonte.

1508 Pamphlets

The state board of health's pamphlet exhibit at the Archdiocesan Teachers' Institute in New Orleans resulted in 124 requests for 1,508 pamphlets.

POLIO...

(Continued from page 1)

groups, Dr. W. J. Rein, president of the state board of health, quoted Public Health Service figures showing that almost half of the 1960 polio cases were babies and children 5 years and under. Young adults who contracted the disease were among those most seriously paralyzed.

According to PHS, 38 percent of children 5 years and under, 63 percent of men aged 20 to 40, and 48 percent of women aged 20 to 40 are not fully vaccinated.

Vaccination records show that low income areas (where paralytic polio in 1960 was concentrated), in both urban and rural communities, contain a much higher proportion of unvaccinated persons than the country as a whole. This is especially true of pre-school youngsters and adults, as state board of health surveys bear out.

Special efforts are being made to reach these "island" groups. The state board of health is calling for support from the voluntary agencies, executive directors of housing projects, the state Welfare department, the clergy, labor unions, industry, and other special groups and organizations.

Parish health units will conduct intensified local campaigns, including mailing information to parents of all children born within their parish during the past year, and to parents of children born outside the parish but residing within it. Volunteers will be sought to make a door-to-door appeal in neighborhoods where polio immunization is known to be poor.

If you think the task may be difficult, Dr. Rein points out that last year's record - only 50 cases of polio reported throughout the entire state - means that the goal is in sight.

"We need to make a final push. Let's get it done in '61."

.....

Pay LPHA Dues Now!

LPHA...

(Continued from page 1)

session, leaving the afternoon for meetings and awards. Sectional business meetings will be held from 12 to 12:30, with a resolutions committee meeting from 1:30 to 2 p.m. followed by an hour-long general business meeting for election of officers. The much-anticipated awards will be presented by Dr. Ben Freedman, chairman of the awards committee.

Friday's session will begin at 8:30 with a meeting of the newly-elected governing council. The remainder of the morning will be taken up by sectional meetings.

20-Year Pins

Personnel of the Louisiana State Board of Health who are eligible to receive 20-year service pins are: Central Office - John E. Trygg, director, Division of Public Health Engineering; S. C. Newitt, director, Division of Administrative Services; Dr. Paul Cook, chief, Section of Dental and School Health; Henrietta Wedell, steno-clerk III, Division of Administrative Services; Hazel K. Anseman, steno-clerk III, Division of Local Health Services; B. C. Pardue, executive assistant, Section of Crippled Children Services; Betty Ford, clinical social worker, Section of Crippled Children Services, and Catherine M. Johnson, clerk II, Section of Tabulation and Analysis.

Regional - Wava L. Mouton, Southwest regional nurse; Lloyd H. Methe, Southwest regional sanitarian, and Olive Parham, laboratory technician II, Shreveport regional laboratory; Health Units - Dr. Murphy P. Martin, director, Iberia, Lafayette and St. Martin parishes, and Eola O. Lightfoot, steno-clerk II, Rapides parish.

Any employee who feels his name should be included in this list is requested to write directly to the personnel manager, Walter Smith, at Central Office. Twenty-year service pins will be awarded at the LPHA annual meeting, April 28.

In store for the public health administration section is a talk on "Observations on Human and Animal

Health in Africa" by Dr. Steele; "Status of Parish Boards of Health", Dr. Andrew Hedmeg, and "Department of Public Welfare Bedside Nursing Project," Dr. Ben Freedman. Special agent in charge of the FBI in New Orleans, W. W. Bromwell will speak to the clerical and statistical section on the "Current Activities of the FBI". John Trygg, director of the division of public health engineering, will speak to the laboratory section on "Stream Pollution Abatement".

Speakers for the nursing section are Dr. Arthur L. Seale, superintendent of Central Louisiana State Hospital in Pineville, who will talk on "The Community and Mental Health", and Dr. Hedmeg, whose topic is the "Department of Public Welfare Bedside Nursing Project". The sanitation section will hear a talk on "The Duties of a Field Man and What Industry Expects of a Sanitarian" by N. W. Lamb, quality control man for the southern division, Borden Company.

Henri Wolbrette of New Orleans, executive secretary of the Louisiana Chemical Association will talk to the education and special services section on "Some Basic Principles in Communication". "How We, the Voluntary Health Agencies, Get Our Message to the Public" will be the topic of a panel discussion moderated by Wolbrette. Participants include Raymond Roger, Louisiana Heart Association; Dr. Loyd W. Rowland, La. Mental Hygiene Association; W. Findley Raymond, La. Tuberculosis Association; James E. Marion, La. Chapter National Society for Crippled Children and Adults; Ashton Brisolara, Alcoholism Committee of Greater New Orleans; Miss Betty Hugh, New Orleans Chapter, American Red Cross, and a representative of the La. Division of the American Cancer Society.

The chance to chat with old friends from around the state and to get acquainted with new ones will come Thursday evening with cocktails at 6 p.m. and a banquet at 7:30. A dance will be held from 9 to 1. Everyone will head home Friday at noon.

Top 10 Pamphlets

More than 223,625 pamphlets and posters were distributed last year by the Division of Public Health Education, according to M. E. Kossack, director.

The "Top Ten" titles, from a total of 270 publications available, were: Rescue Breathing—12,201; Infant Care—5,912; The Fundamental 5 of Safe Food Service—5,444; Feeding Card NS-7, Protective Foods for Growing Children—5,103; Feeding Card NS-1, What to feed Your Baby the First Two Months—4,889; Diphtheria—4,541; Prenatal Care—4,060; The Truth About Cancer—4,053; and Feeding Card NS-2, What to Feed Your Baby the Third and Fourth Months—3,921.

Copies of health information publications may be obtained without charge from the Division of Public Health Education, P.O. Box 630, New Orleans 7, and from parish health units and branch offices.

Survey Water, Sewerage Systems in Flood Areas

There was water, water, everywhere—but the St. Tammany Parish Health Unit was right on the job, making a survey of all known water and sewerage systems that were flooded on the Bogue Falaya and Tchoufunct rivers. According to Dr. H. E. Cannon, director, no public sewerage and water systems were affected by the recent flooding, and no epidemic disease was expected to occur.

Public health sanitarians John L. Vernon and John Willoughby inspected 44 private wells that might have been contaminated by flood waters. They chlorinated three wells at the time of inspection, and sent 27 water samples to the laboratory in New Orleans for examination. Residents were warned not to drink water from possibly contaminated wells until the lab reports were received, and the public was informed through the local news media on how to obtain water samples from wells that had been submerged by flood waters.

Maternity Class Demonstrations Explore Patients' Need for Service

Maternity classes conducted by public health nurses are not new, but in Northwest Louisiana they were given concentrated attention last year. To help staff nurses evaluate their MCH services, demonstration classes were organized in 12 parishes by Miss Louise Guidry, regional nurse, and conducted by Mrs. Louisa Leonard, MCH nurse consultant.

Class content included a review of obstetrics, demonstration of group dynamics, use of visual aids, and group discussion.

The last is a particularly important point, according to Mrs. Leonard. While maternity classes are planned to cover such specific topics as growth and development of the fetus, discomforts of pregnancy, preparation for delivery (including the birth and post-partum care), and care of infants, including the premature—the patients may have some quite different concerns and anxieties, Mrs. Leonard explained.

"Nurses must, therefore, learn to listen as well as lecture. What is the use of talking about diet to a woman who is more concerned about the discomforts of her pregnancy, or who is worried about situations with older children in the family? We do not always recognize the patient's needs. It is important that we find out what the patient feels she needs to know—what does she need from us that we can give her? When parents are encouraged to ask questions and make comments, in a supportive group setting, and to explore the topics of their own choice, the classes are more beneficial to everyone."

Twenty-eight nurses observed the demonstration classes attended by 490 maternity patients. A series of four classes was held on regular maternity clinic days at each health unit. Following the group conference, patients were checked individually for blood pressure, weight, hemoglobin, urinalysis and other tests, immunization, and individual instruction as



needed.

Whether a health unit should offer a series of maternity classes depends upon many factors: the size of the clinics, the space available, the general type of activity, the number of nurses, and the nurses' own feelings about such classes. As of February this year, five health units in the Northwest region are conducting classes: Webster, Union, Winn, Claiborne and Lincoln. Tentative plans are being made for classes in Jackson and DeSoto, and in Red River and Bossier parishes classes are being held by student nurses.

There is still a great need for maternal and child health public health nursing services, the consultants agree. But the services need to be constantly evaluated to meet changing needs, and to capitalize on new knowledge and techniques.

2 Health Units Enter Crumbine Competition

For the first time, Louisiana parish health units will enter the Samuel J. Crumbine awards competition. Graves J. Grant, chief of the section of sanitarians' services recommended that both Vermillion and St. Landry parish health units enter the competition.

The Newsletter wishes both health units good luck, and congratulates them on the outstanding sanitation programs that merit their entry in a national contest.

Some Thoughts on Annual Reports

Except for disasters, epidemics and peculiarly local situations, all parish health unit activities are fairly basic and routine. Some health units have more money to operate with than others; these are able to offer more services. Their reports may be longer, but they share certain qualities with their poorer brethren: in addition to being inexpensively produced, annual reports must be factual, statistically accurate, comprehensive. Even when no new services have been added during a given year, the report must have freshness, and that indefinable quality, "reader appeal." The annual report competes with stacks of publications for the attention of the police juror, school board member, mayor, and private citizen of whatever calling.

The Newsletter is of the opinion that the health units are doing not just a good job, but an increasingly better job, of getting their reports written, publicized and read.

Much credit goes to Miss Lillian Edwards, northern regional public health educator, who assists in the preparation of many annual reports. And to the local staffs, from clerk to health unit director, who share the basic responsibility, we offer congratulations.

Current Clips

Dr. M. J. Picinich, director of the West Baton Rouge Parish Health Unit, announced that the health unit would cooperate with the town of Port Allen to help it win the title "Cleanest City of 1961." We expect that Dr. Picinich's staff will get some tough competition from other health units as Louisiana's towns enter the civic pride contest.

Another interesting note from WBR - the health unit, in cooperation with the Louisiana Evaluation Center in New Orleans, now holds monthly spe-

cial evaluation clinics to deal with mental problems.

"Three things were booming at the Caddo-Shreveport Health Unit last year: babies, weeds and fogs," said the Shreveport Times, reviewing the health unit's annual report. What the Caddo-Shreveport health unit does makes news the year 'round, and we're grateful to the staff for providing us with a monthly batch of clippings to keep us up-to-date with their activities.

Friends Afield



Dorothy Dupleichin, typist-clerk, is the "voice" of the Lafayette Parish Health Unit to hundreds of local residents who call for information, advice, and appointments.

ANSWERS TO

"CURIOUS"

1. True. At the time of the license application, both must present certified copies of their original birth records containing the raised seal or stamp, and signature of the registrar or agency issuing the certificate.

2. False. Blood tests are left to the discretion of the physician performing the pre-marital examination, which is required by law. Examination certificates, dated within 10 days of the application, must be submitted by both parties when applying for a marriage license.

3. True. All pre-marital medical examinations must be performed by physicians practicing in Louisiana, except when one of the parties is in the armed forces stationed outside of the state, in which case the medical officer in charge of the base may do the examining.

4. True. In addition to race, the certificate must show the registrant's full name at birth, birth date, birth place, sex, and parents' names. If either party has no birth record on file, a letter from the proper registration authority containing the registrar's raised seal or stamp and signature may be substituted for the certificate. The letter must state that a search of the files has failed to reveal the birth record. For additional information, contact Mr. Anthony Ciaccio, director, division of Public Health Statistics, La. State Board of Health, New Orleans, La.

LOUISIANA PUBLIC HEALTH ASSOCIATION APPLICATION FOR MEMBERSHIP

DATE _____

NAME _____

MAILING ADDRESS _____ CITY _____

AGENCY _____ CITY _____

SECTION AFFILIATION - (CHECK)

PUBLIC HEALTH ADMINISTRATION () CLERICAL AND STATISTICAL ()

PUBLIC HEALTH NURSING () LABORATORY ()

SANITATION () HEALTH EDUCATION ()

ARE YOU A MEMBER OF THE A.P.H.A.? _____

MEMBERSHIP DUES \$2.00

SIGNATURE _____

Send check to: GEORGE INEICHEN, P. O. Box 1872, Monroe, La.