

# Newsletter

Louisiana Public Health Association



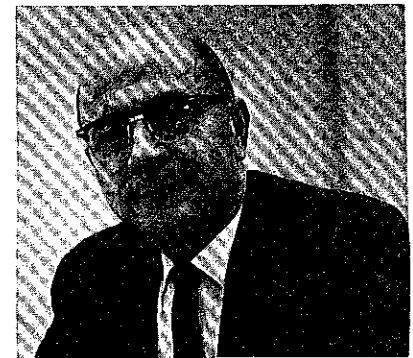
P.O. Box 60630

APRIL 1969

PRE-CONVENTION ISSUE

LOUISIANA PUBLIC HEALTH ASSOCIATION  
1969 ANNUAL MEETING  
APRIL 23-25  
LAFAYETTE, LA. .... ROWNTOWNER

DR. WHARTON  
KEYNOTE  
SPEAKER



GREETINGS FROM THE PRESIDENT--It's Spring! And I'm sure your thoughts are turning to the LPHA Annual Meeting for 1969. Our theme this year is PUBLIC HEALTH IN THE NEXT DECADE, which parallels the theme of the 1969 Southern Branch, APHA

meeting, "The Seventies, Decade for Decision." I think you will find the speakers at the general sessions stimulating and the technical sessions challenging.

Several changes have been made in the order of the

meeting which we hope will make for a faster moving, more exciting program. There are also changes on the social calendar. Instead of the usual cocktail hour, the President's Reception on Wednesday will be a seafood boil, from 6 p.m. to midnight, at the American Legion Hall. And if you are a golfer, you are invited to enter our FIRST ANNUAL LPHA GOLF TOURNAMENT Wednesday, from 8 a.m. to 8 p.m.

My thanks go to Dr. Murphy Martin, program chairman, and Dr. Robert Thompson, local arrangements chairman, for the excellent job they and their committees have done in setting up our 1969 meeting.

I hope everyone will make an extra effort to attend this year and help make this our best meeting yet.

VERNON "Buck" PARKER  
President, LPHA

This year the Louisiana Public Health Association will have James D. Wharton, M.D., M.P.H., health commissioner, Cincinnati Health Department, as keynote speaker for the 1969 Annual Meeting.

Dr. Wharton has served in the U.S. Navy as Chief of Preventive Medicine at the Naval Medical School, Executive Officer of the Naval Medical Field Research Laboratory, and officer in Charge of Fleet Epidemic Disease Control Unit #1 in the Far East.

In 1955 he was commissioned into the U.S. Public Health Service, serving in the Special Public Health Service of Brazil for five years, the last two as co-superintendent. He later spent a year as director of public health in Utah.

Before becoming commissioner of health in Cincinnati in 1967, Dr. Wharton was director of the Division of Community Health Services, USPHS, concerned with health services planning research and development, and migrant, school, and rural health.

In 1968 he was elected secretary of the Health Officers Section, APHA, and was also appointed Trustee, U. S. Conference of City Health Officers.

Other speakers on the program will be Andrew Hedmeg, M.D., M.P.H., Louisiana's acting state health officer; Grace A. Goldsmith, M.D., Dean, Tulane University School of Public Health and Tropical Medicine; and Benjamin Kaplan, Ph.D., Godchaux Honors Professor of Sociology, University of Southwestern Louisiana in Lafayette.



# STATE HEALTH DEPARTMENT HONORS 20-YEAR EMPLOYEES

The Louisiana State Health Department will present service pins to 32 employees who completed twenty or more years of service with the agency by January 1 this year at the annual meeting of the public health association.

The honorees, all state civil service employees, represent more than a dozen categories of public health positions. Ten are associated with the health department's Central Office in New Orleans, and the majority are employed in parish health units.

Those from New Orleans are: Mrs. Dorothy Austin, administrative assistant, Registration and Records Section; Floyd Burke, X-ray technician, Tuberculosis Control Section; Anthony Ciaccio, director, Bureau of Vital Statistics; Mrs. Maxine G. Jackson, typist-clerk, office of the President; Mrs. Lucile F. Klotz, accountant, Bureau of Administrative Services; Louis Menendez, food and drug control officer, Division of Food and Drugs; Mrs. Blanche Pedepau, typist-clerk, Tuberculosis Control; Shirley Reid, chemist, Bureau of Laboratories; Lawrence D. Santana, head of the Division of Purchasing; and Warren H. Reinhart, chief, Occupational and Radiological Health Section.

Miss Dolly Reed, health records consultant, is assigned to the Northern Regional Office at Monroe. Vernie McDaniels, Carol Morgan, and Carlos Raiford, sanitarians, are at the Amite office of the Division of Milk and Dairy Products.

The other public health workers, by parish health unit, are: Mrs. Ruby Miller, nurse, East Baton Rouge; Mrs. Reita B. Cockrell, steno-clerk, Mrs. Ethel Blackman, aide, and Mrs. Mamie C. Maroney, Morehouse; Willie Bourge, sanitarian, Vermilion; Mrs. Laura Cormier, nurse, John R. Moreau, X-ray technician, and Mrs. Essie Ruth Savoy, nurse, St. Landry;

Miss Martha Flakes, aide, Lafourche; Mrs. Omie R. Flores, nurse, DeSoto; Mrs. Amy Freeman, aide, Tangipahoa; Raymond Gravelle, sanitarian, Richland; Mrs. Rubye C. Harlan, Washington; Jessie Harville, sanitarian, and Mrs. Gertrude Mize, switchboard operator, Caddo-Shreveport; Mrs. Gloria Hickman, typist-clerk, Vernon; and August L. Thomas, sanitarian, Iberia.

## DR. HEDMEG URGES ATTENDANCE AT ANNUAL MEETING



Your LPHA membership card is a symbol of your pride in your profession. While the majority of Louisiana Public Health Association members are employees of the Louisiana State Department of Health, increasingly the Association has welcomed individuals from voluntary health agencies, from the schools of medicine and public health, from allied professions and institutions. This attitude rightly reflects the changing emphasis on matters of health in our society. We are learning to live and work together with the common goal of providing comprehensive health services for everyone.

Those of us who are actively engaged, day after day, in providing public health services, must also provide the leadership necessary to achieve this goal. The annual meeting of LPHA is a particularly good opportunity for us to get together with others of like interests, to consider where we've been, where we are going, and how to get there. The program outlined in this Newsletter promises to enlighten us in several areas. LPHA awards honor public health workers and those who have contributed to the public health field from outside the profession. The annual meeting is always a pleasant social occasion as well as an intellectual one.

For all of these reasons, I urge employees of the state health department who possibly can to join LPHA and attend the 1969 meeting. You may attend without loss of annual leave, because of the incentive training benefits of these carefully planned sessions. As always, sufficient staff must remain on duty in each office and unit to prevent disruption of normal services.

I look forward to seeing you in Lafayette.

Andrew Hedmeg, M.D., M.P.H.  
Acting State Health Officer

WEDNESDAY, APRIL 23

- 8:00 AM - 8:00 PM. . FIRST ANNUAL LPHA GOLF TOURNAMENT  
Lafayette Municipal Golf Course
- 2:00 PM. . . . . GOVERNING COUNCIL MEETING
- 4:00 PM. . . . . ALLIED HEALTH GROUPS MEETING
- 6:00 PM. . . . . PRESIDENT'S RECEPTION-Crayfish boil  
American Legion Hall, Surrey Street

THURSDAY, APRIL 24

- 8:00 AM. . . . . REGISTRATION
- 9:00 AM. . . . . FIRST GENERAL SESSION
- 9:30 AM. . . . . "PUBLIC HEALTH TRENDS IN LOUISIANA"  
Andrew Hedmeg, M.D., M.P.H.  
Acting State Health Officer
- 9:45 AM. . . . . "PUBLIC HEALTH IN THE NEXT DECADE"  
James D. Wharton, M.D., M.P.H.  
Health Commissioner, Cincinnati
- 10:30 AM. . . . . "NUTRITION AND HEALTH"  
Grace A. Goldsmith, M.D., Dean  
Tulane School of Public Health  
and Tropical Medicine
- 11:15 AM. . . . . ELECTION OF OFFICERS
- 11:30 AM. . . . . SECTION BUSINESS MEETINGS
- 12:30 AM. . . . . RECESS FOR LUNCH
- 2:00 PM . . . . . "PROFILE OF THE LOUISIANIAN"  
Benjamin Kaplan, Ph.D.  
Godchaux Honors Professor of Sociology  
University of Southwestern Louisiana
- 2:45 PM . . . . . GENERAL BUSINESS SESSION
- 6:00 PM . . . . . AUTO-CHLOR COCKTAIL HOUR
- 7:30 PM . . . ANNUAL BANQUET and PRESENTATION OF AWARDS
- 9:00 PM . . . . . DANCE, George Wimberly Quartet

FRIDAY, APRIL 25

- 9:00 AM - Noon. . . . . SECTION MEETINGS
- 12:00 Noon. . . . . GOVERNING COUNCIL MEETING

# GOLF TOURNAMENT PLANNED

LPHA golfers will have their day Wednesday, April 23, at the First Annual LPHA Golf Tournament.

The 18-hole tournament will be held at the Lafayette Municipal Golf Course. Tee-off time is 8 a.m. and the tournament will run until 8 p.m.

A combined greens and entry fee of \$3.00 will be charged and players must present their membership cards to register. Early starting times will be given those who have afternoon meetings.

Players will have a chance at 10 trophies presented by the Association and a set of blue and silver MacGregor wood covers. President "Buck" Parker is offering a dozen golf-balls for any hole-in-one.

Members interested in registering should contact Parker by April 15 so that playing times can be set. Call New Orleans, 527-5115, or write Vernon Parker, President, La. Public Health Association, P. O. Box 60630, New Orleans, La., 70160.

Late entries will also be welcome.

**ALWAYS  
A STEP AHEAD**

## LPHA SECTION MEETINGS SCHEDULE LOCAL, NATIONAL SPEAKERS

LPHA SANITARIANS and HEALTH OFFICERS will hold a joint section meeting this year to look at the future of environmental health. Addressing them are: Dr. Ben Freedman, director, state health department Bureau of Health Conservation, on the "Sanitarian Residency Program;" Francis J. Goldsmith, special assistant to the director, Career Program Division, USPHS Office of Personnel and Training, "Development of the Sanitarian;" and Dale Truesdell, Division of Direct Health Services, DHEW, "Development and Use of the Sanitarian Aide."

"Safety and Sex" will be the topic when Dr. Irmagine Holloway addresses the HEALTH EDUCATION AND SPECIAL SERVICES SECTION. Dr. Holloway is assistant for consumer education, USPHS Consumer Protection and Environmental Health Section. Other speakers are George Ineichen, associate regional program director, Division of Emergency Health Services, Region VII, "Improving Emergency Health Services;" Miss Judy Willis, state health department health educator, "Smoking Hazards," and Dr. Patrick Morgan, field director of the Louisiana Nutrition Survey.

Continued on page 4

# NOMINEES FOR TOP OFFICES CHOSEN

At their January meeting in Lafayette, the nominating committee, headed by Osborn Willis, selected candidates for top association offices to be presented to the membership for their vote at the First General Session.

The nominees include: J. C. Watson, northwestern regional sanitarian, 1st vice-president; Dobie Barras, Lafayette Parish health educator, 2nd vice-president; Mrs. Willie Jean Shields, steno-clerk, Northern Regional Office, Monroe, secretary-president-elect; H. Joe Osborn, administrative assistant, state health department Tuberculosis Control Program. Mrs. Dorothy Talbot is 1969 president by resolution naming the past secretary as president-elect.

Nominations for the offices will also be accepted from the floor.

# TREAT PLANNED FOR MEMBERS' WIVES

A tea and fashion show are tentatively planned for wives of LPHA members on Thursday, April 24. The style show will be sponsored by Wormer's of Lafayette. Details of the events will appear in the meeting program. There is no charge for attending. Ladies who are interested in attending should contact "Buck" Parker as soon as possible.

# SECTION MEETINGS...CONTINUED.....

Mrs. Wilma Lafleur, traffic recruiting supervisor for South Central Bell Telephone Company, tells public health CLERICAL AND STATISTICAL SECTION members, "Your Image is on the Line," at the group's technical meeting. Dr. Harold G. Scott, director of training at the New Orleans USPHS Hospital, will speak on "Subprofessional and Community Training."

The PUBLIC HEALTH NURSES SECTION hosts Harlan L. Stricklett, consultant, Epidemiology and Statistics Division, National Tuberculosis Association, who will discuss "Problems and Potentials in Tuberculosis Control." Mrs. J. B. Hickey, head of the nursing division, state health department, and section speaker, will follow the convention theme with a "Profile of Future Public Health Nursing."

Main speakers for the ENGINEERING SECTION are Ted Heil, engineer with Dyer and Moody, Inc., "Modern Municipal Incinerator Design;" and William M. Middleton, Middleton Co. of New Orleans, "On-site Incinerators and the Incinerator Institute of America Standards." Members of other sections are invited to watch the demonstration of a Class III incinerator which will last until Friday noon or later.

The LABORATORY SECTION has asked Joseph D'Alfonso, state health department food and drug control officer, to speak on "Our Louisiana Seafoods." D'Alfonso is nationally recognized in this field and has given numerous lectures to national and regional meetings.

\*\*\*\*\*

## Louisiana Public Health Association, Inc. APPLICATION FOR MEMBERSHIP

DATE \_\_\_\_\_

Name \_\_\_\_\_

Mailing Address \_\_\_\_\_

City \_\_\_\_\_ Zip Code \_\_\_\_\_

Agency \_\_\_\_\_

City \_\_\_\_\_

### Section Affiliation -- (Check One)

- |                          |     |                  |     |
|--------------------------|-----|------------------|-----|
| Health Officers          | ( ) | Laboratory       | ( ) |
| Public Health Nursing    | ( ) | Education and    | ( ) |
| Sanitation               | ( ) | Special Services | ( ) |
| Clerical and Statistical | ( ) | Engineering      | ( ) |

Are you a Member of The A.P.H.A.? \_\_\_\_\_

Membership Dues \$3.00 Signature \_\_\_\_\_

Send Check to: Madge Kelly, Treasurer  
P.O. Box 4460, Monroe, La. 71201

\*\*\*\*\*

MEMBERSHIP DUES . . . . .	\$3.00
CONVENTION REGISTRATION . . . . .	2.00
GOLF TOURNAMENT REGISTRATION . . . . .	3.00
BANQUET AND DANCE . . . . .	6.00

