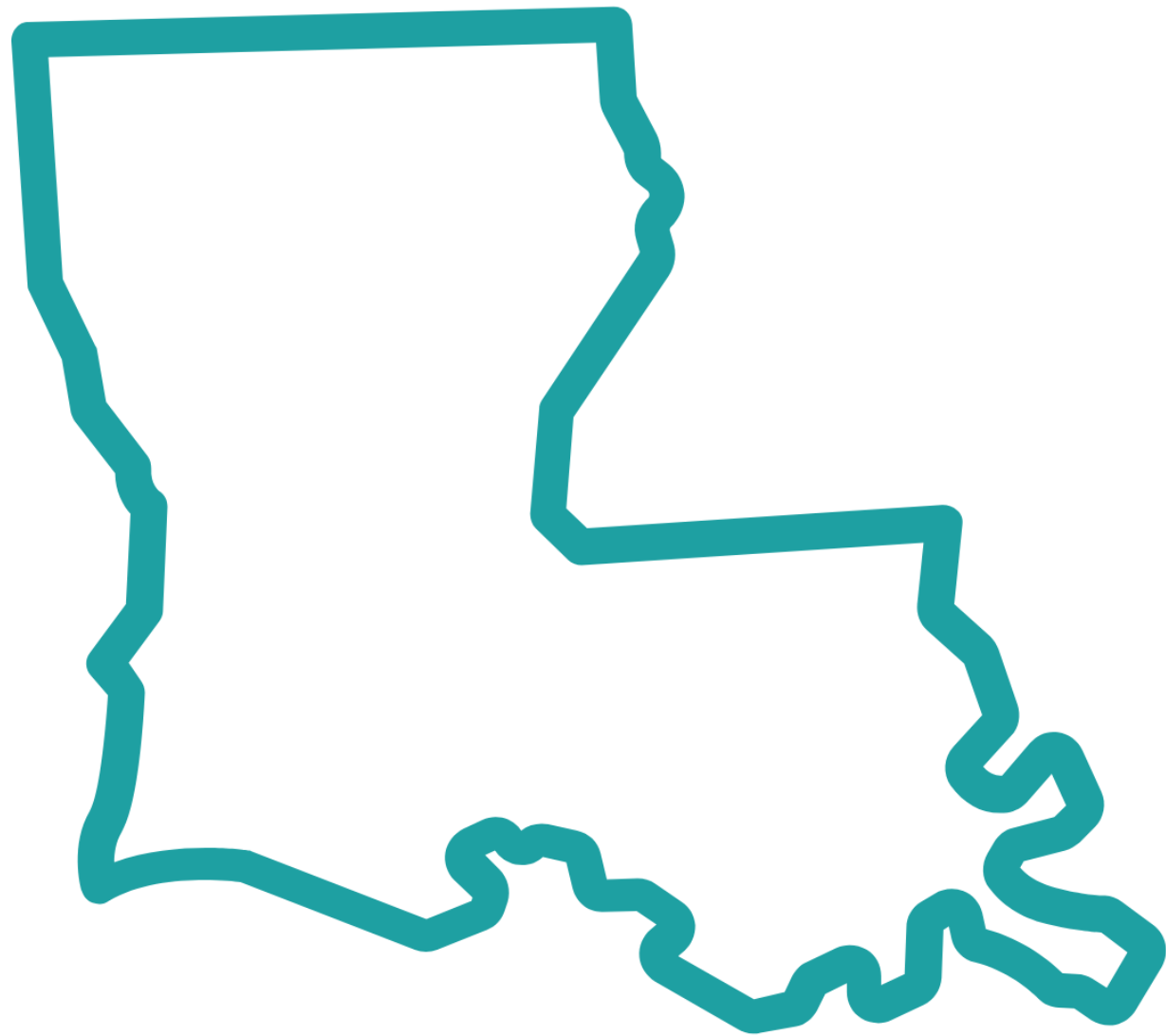


# Meet the Coaches: LDH Overview

*Protecting and promoting health and ensuring access to medical, preventive, and rehabilitative services for all residents of the State of Louisiana*

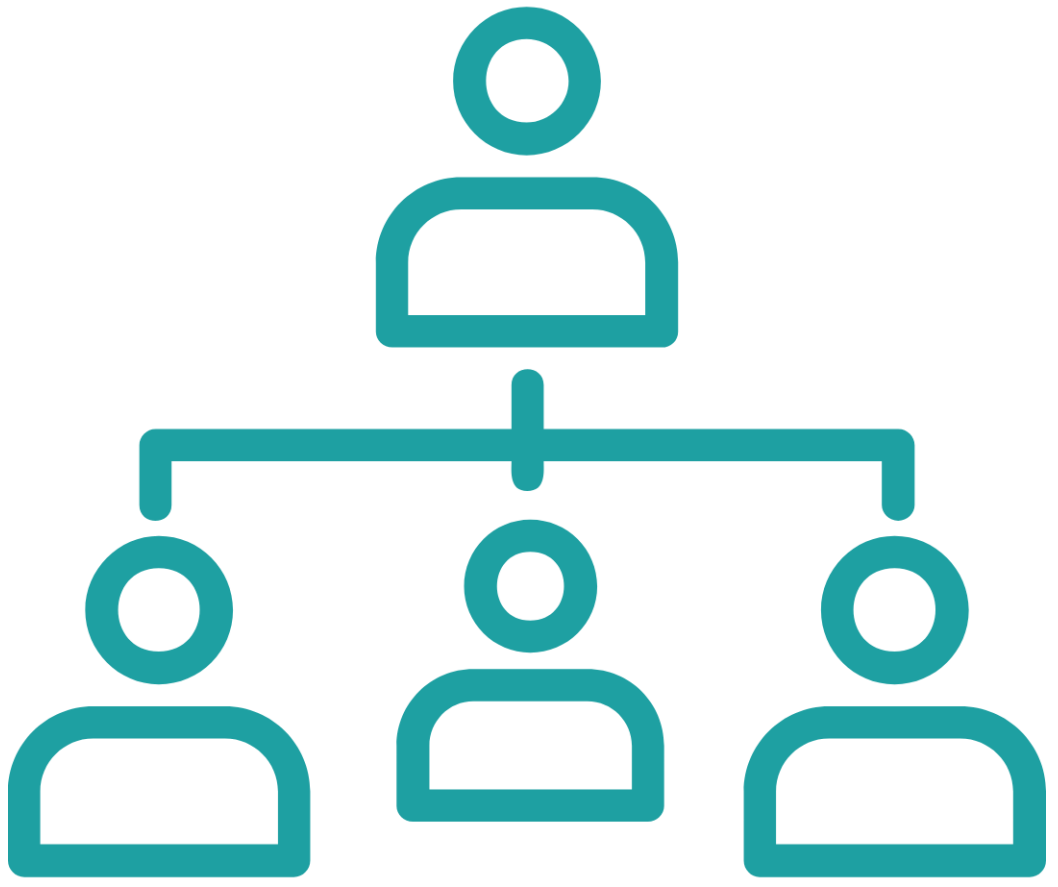
# Who We Are



The Louisiana Department of Health (LDH) is the state's largest agency, with a diverse team working together for a healthier Louisiana.

From protecting public health to supporting Louisiana's most vulnerable residents — you won't just find a job, you'll find a mission.

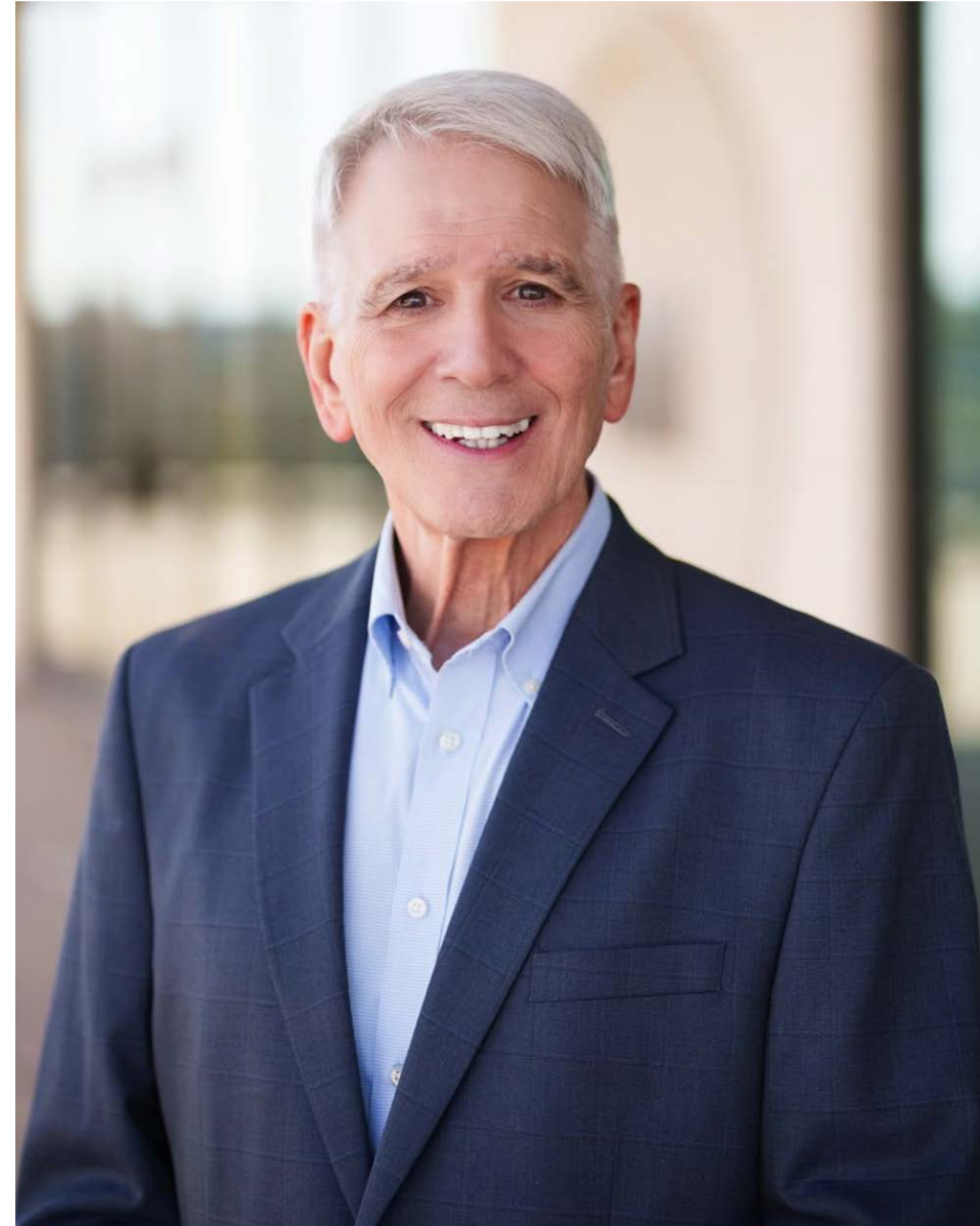
# Executive Management Team



# Executive Management Team



Secretary Bruce D. Greenstein



Surgeon General Ralph L. Abraham

# Executive Management Team



Deputy Secretary Dr. Pete Croughan



Deputy Surgeon General  
Dr. Wyche T. Coleman III



Undersecretary Drew Maranto

# Executive Management Team

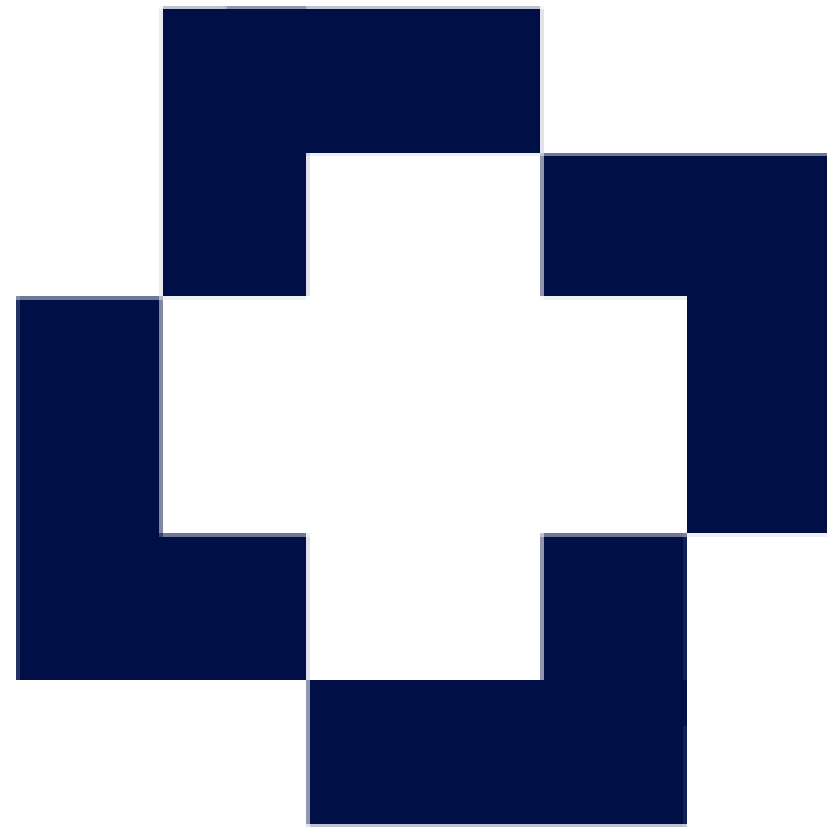


Executive Counsel Nick Gachassin



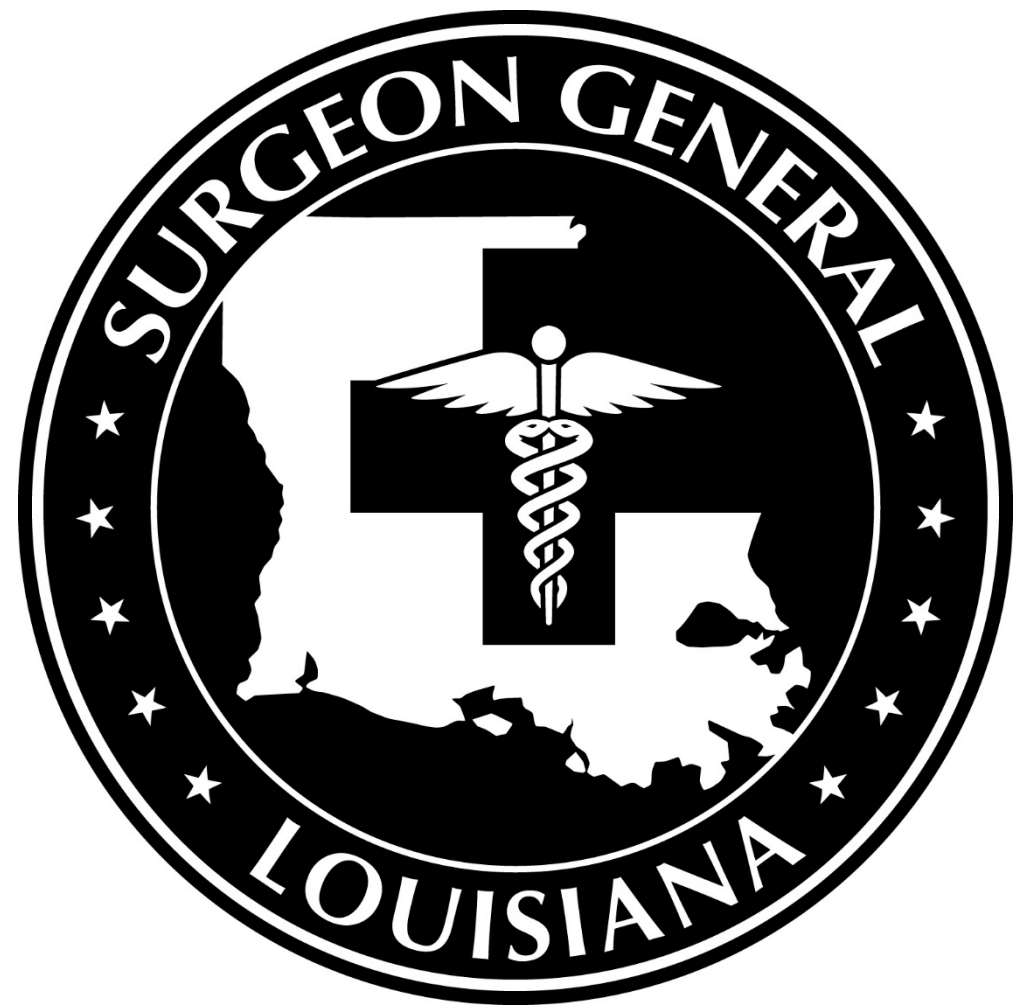
Chief of Staff Monique Cross

# Office of the Secretary



Led by Secretary Bruce D. Greenstein, the Office of the Secretary oversees the entire agency, managing a budget of nearly \$20 billion and a diverse team responsible for delivering services to millions of residents. The office ensures the effective operation of all LDH programs and services.

# Office of Surgeon General



The Office of Surgeon General is charged with crafting health policy, including healthcare workforce development, advocating for wellness and disease prevention, and coordinating with other state agencies and institutions to improve health outcomes in Louisiana.

# Bureau of Health Services Financing (Medicaid)



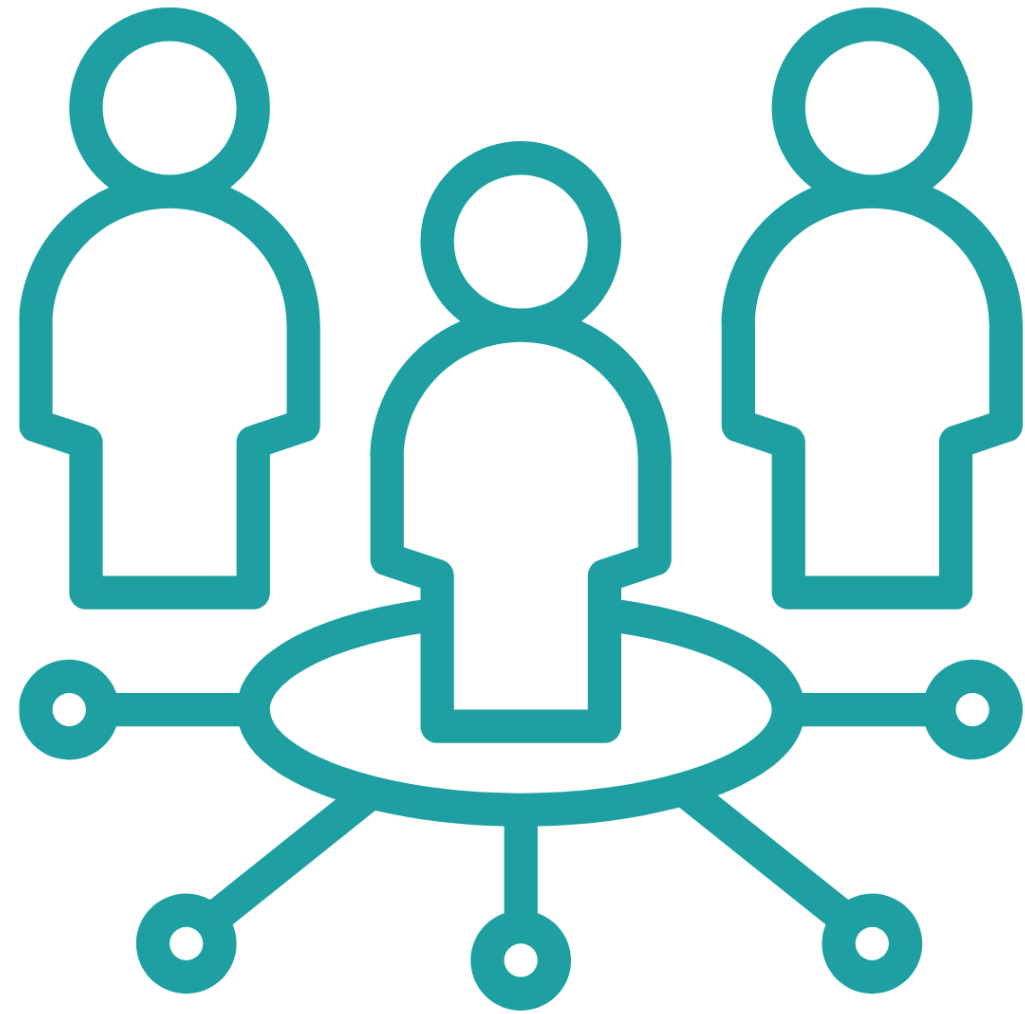
Medicaid provides healthcare coverage to low-income individuals and families. Medicaid operates regional offices that provide in-person assistance with eligibility applications and information.

# Supplemental Nutrition Assistance Program (SNAP)



A federal program that provides food-purchasing assistance for low and no-income persons to help maintain nutritious food essential to health and well-being.

# LDH Program Offices



- Office of Public Health
- Office of Behavioral Health
- Office for Citizens with Developmental Disabilities
- Office of Aging and Adult Services
- Office on Women's Health and Community Health
- Disability Determination Specialist

# Office of Public Health (OPH)

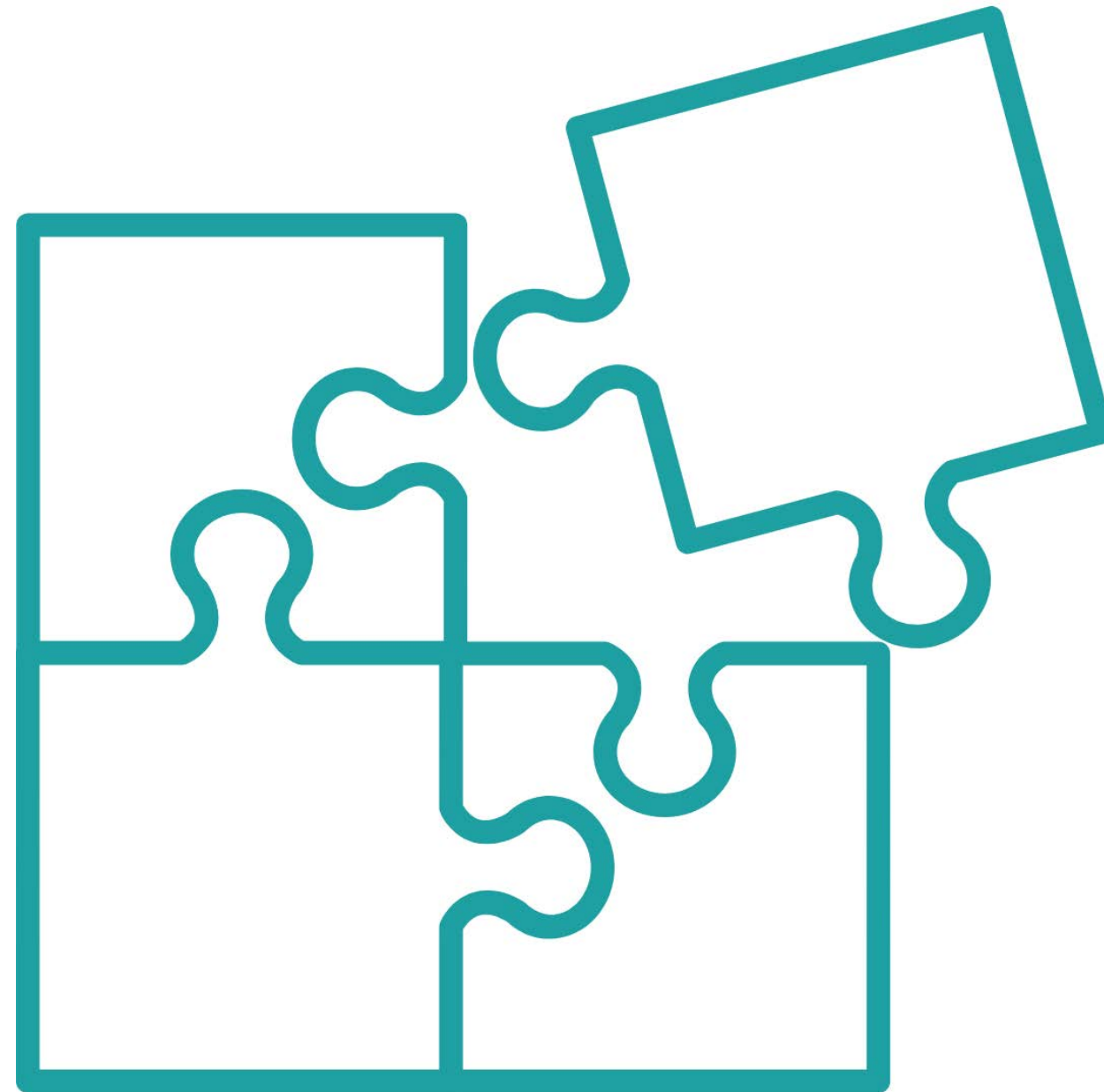


*OPH Bureau of Sanitarian Services working Super Bowl LIX*

# Office of Public Health (OPH)

The Office of Public Health (OPH), comprised of engineers, doctors, chemists, biologists, nurses, sanitarians, clinicians, emergency preparedness experts, and a host of other professionals, is dedicated to protecting and promoting community health across Louisiana. OPH staff are present in 63 parish health units, three specialty clinics, nine regional offices, four centers, and 15 bureaus.

# Office for Citizens with Developmental Disabilities (OCDD)



# Office for Citizens with Developmental Disabilities (OCDD)

The Office for Citizens with Developmental Disabilities (OCDD) serves as the single point of entry into the developmental disabilities services system in Louisiana, overseeing public and private residential services and other supports.

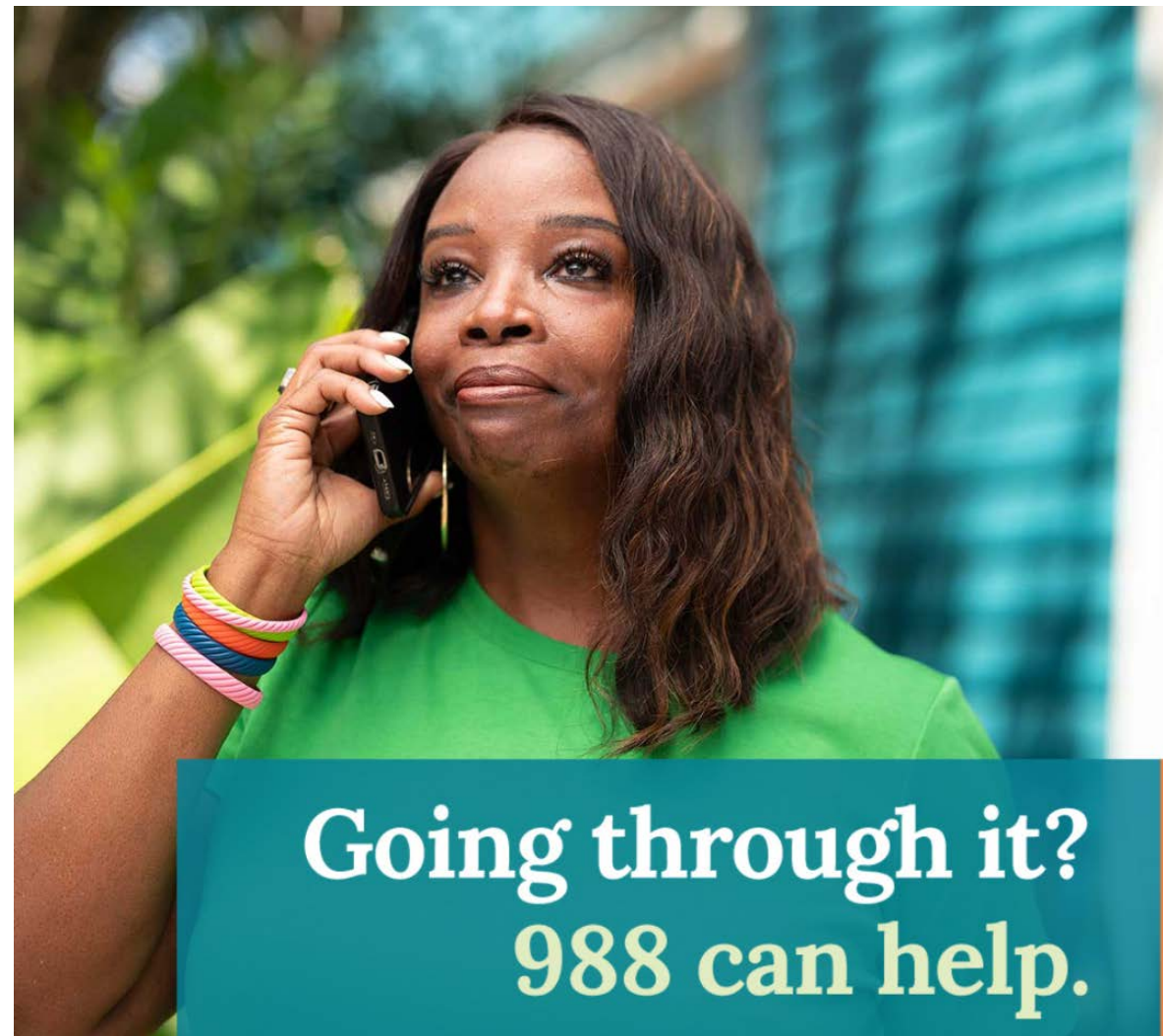


*Secretary Greenstein with Kevin George, an OCDD waiver recipient and employee*

# Office of Behavioral Health (OBH)



# Office of Behavioral Health (OBH)



988 HELP & HOPE ARE HERE

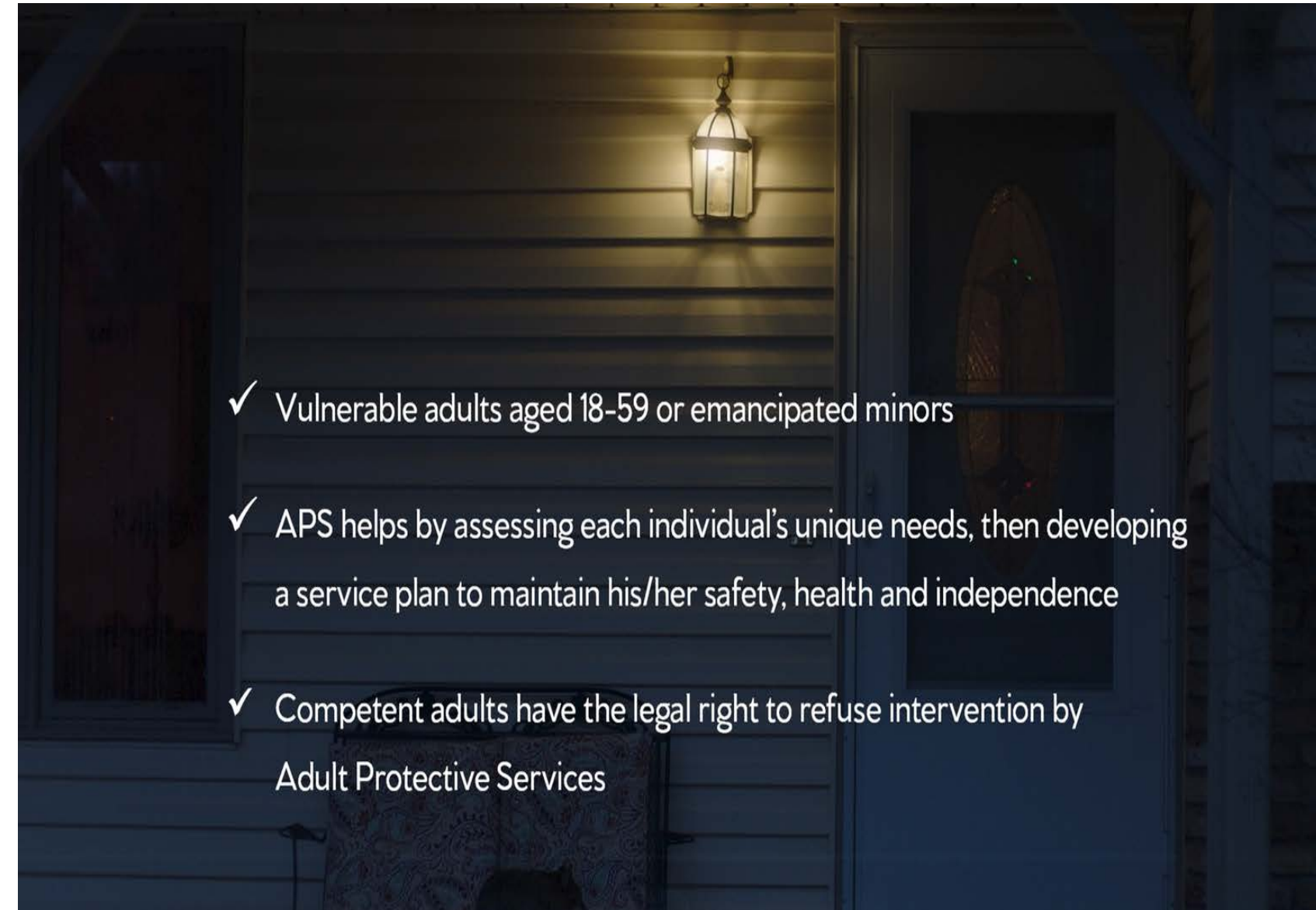
The Office of Behavioral Health (OBH) manages and delivers services and supports for residents with mental health and addictive disorders, providing statewide authority and accountability for behavioral healthcare for both insured and uninsured populations.

# Office of Aging and Adult Services (OAAS)

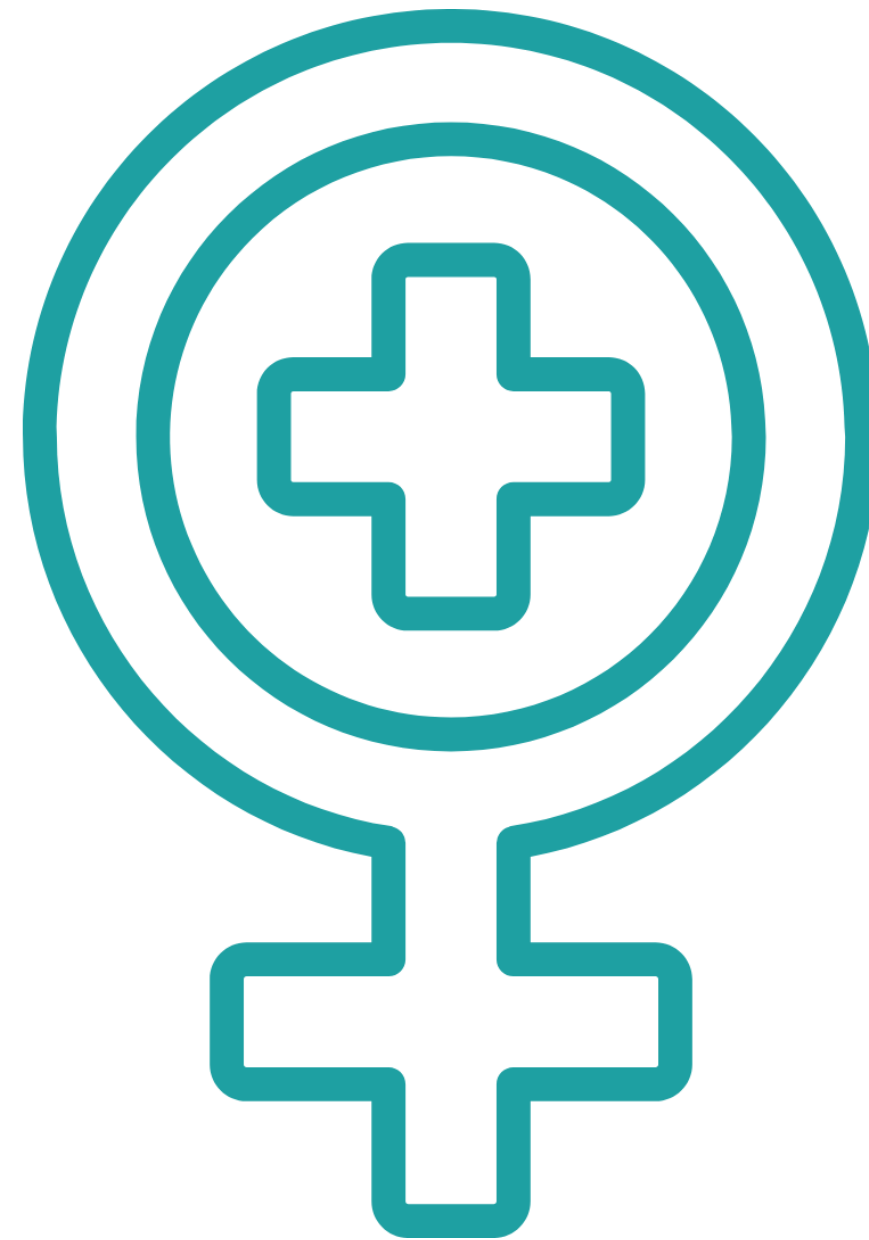


# Office of Aging and Adult Services (OAAS)

The Office of Aging and Adult Services (OAAS) administers home and community-based long-term care services that assist older individuals and those with adult-onset disabilities with remaining in their homes and communities.



# Office on Women's Health and Community Health (OWHCH)

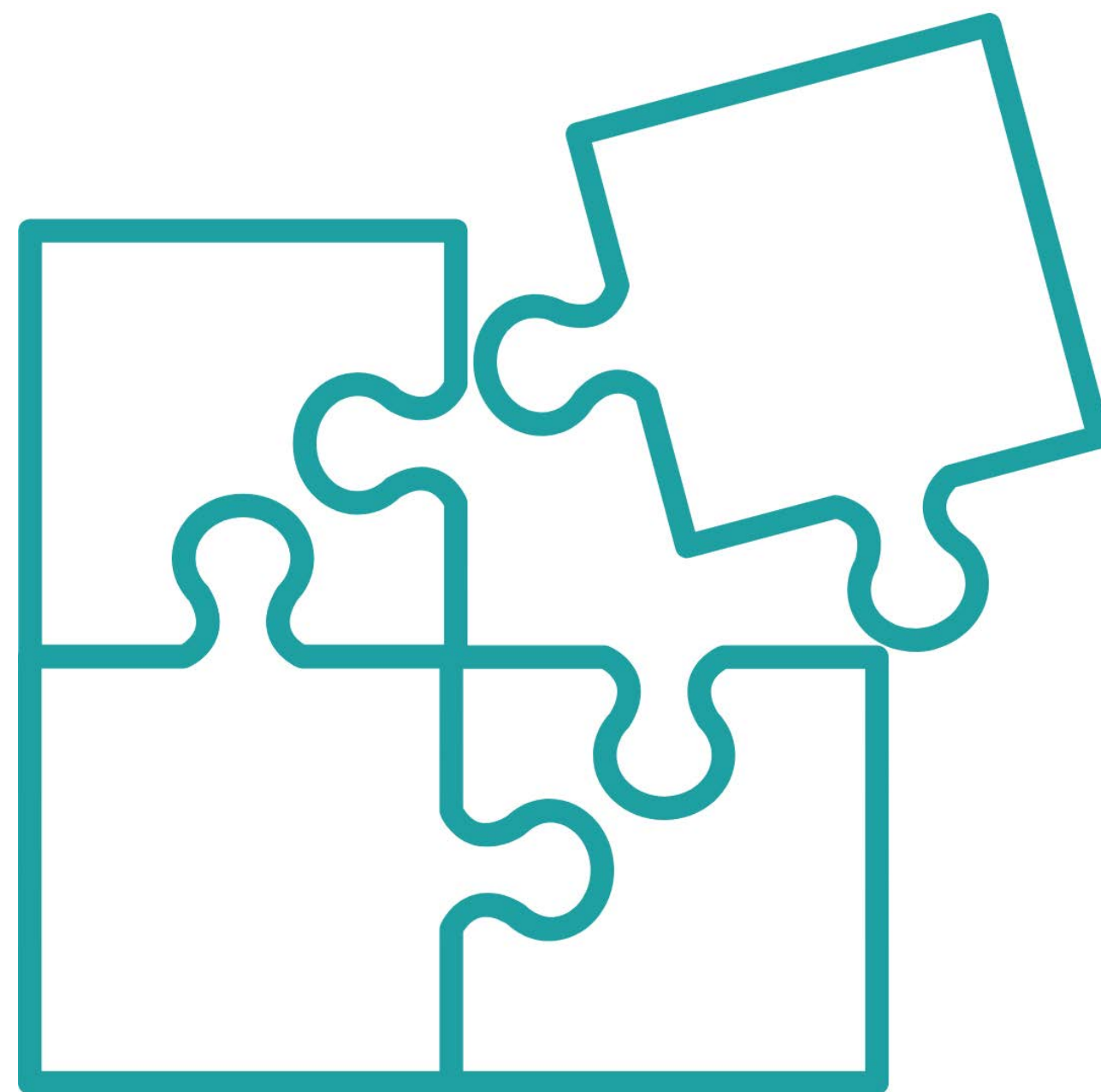


# Office on Women's Health and Community Health (OWHCH)



The Office on Women's Health and Community Health (OWHCH) focuses on improving access to healthcare and women's health outcomes in Louisiana.

# Disability Determination Services (DDS)



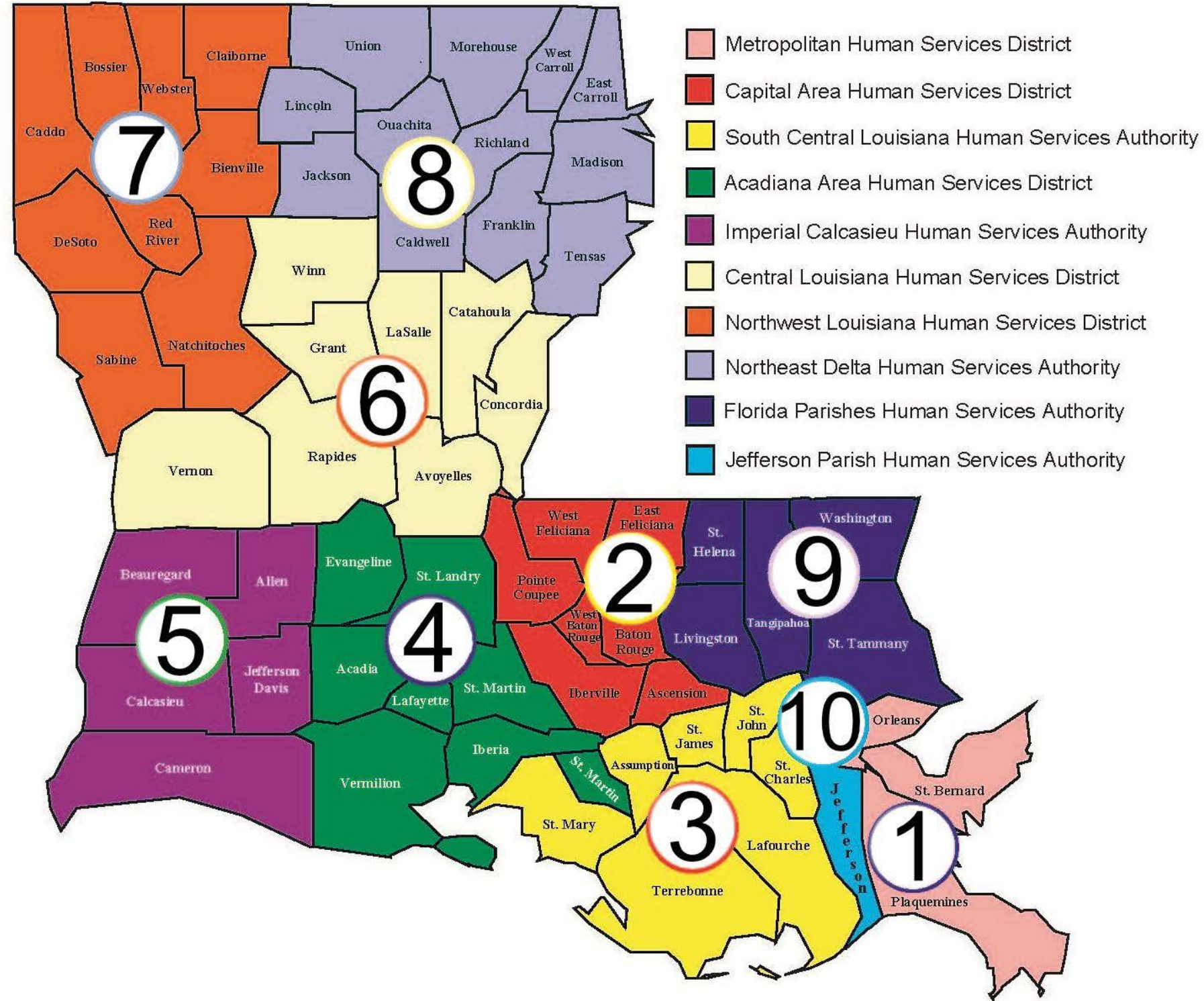
# Disability Determination Services (DDS)

DDS is responsible for reviewing medical evidence and making the determination on whether or not the claimant is disabled or blind under the rules of the Social Security Administration.

# 24-Hour Facilities

- Eastern Louisiana Mental Health System (ELMHS)
- Central Louisiana State Hospital (CLSH)
- Pinecrest Supports and Services Center (PSSC)
- Central Louisiana Supports and Services Center (CLSSC)
- Villa Feliciana Medical Complex (VFMC)

# Local Governing Entities



**THANK YOU**