

Office of Surgeon General: Emergency Preparedness

Carl A. Flores

Executive Director of Emergency Preparedness

Ricky Montet

Director of DCFS Emergency Preparedness

Agenda

- What is Emergency Preparedness?
- December 1 Transition
- Emergency Support Functions (ESFs)
- Sheltering
- D-SNAP
- 2025 Events
- Mitigation Initiatives
- How to Support Emergency Preparedness

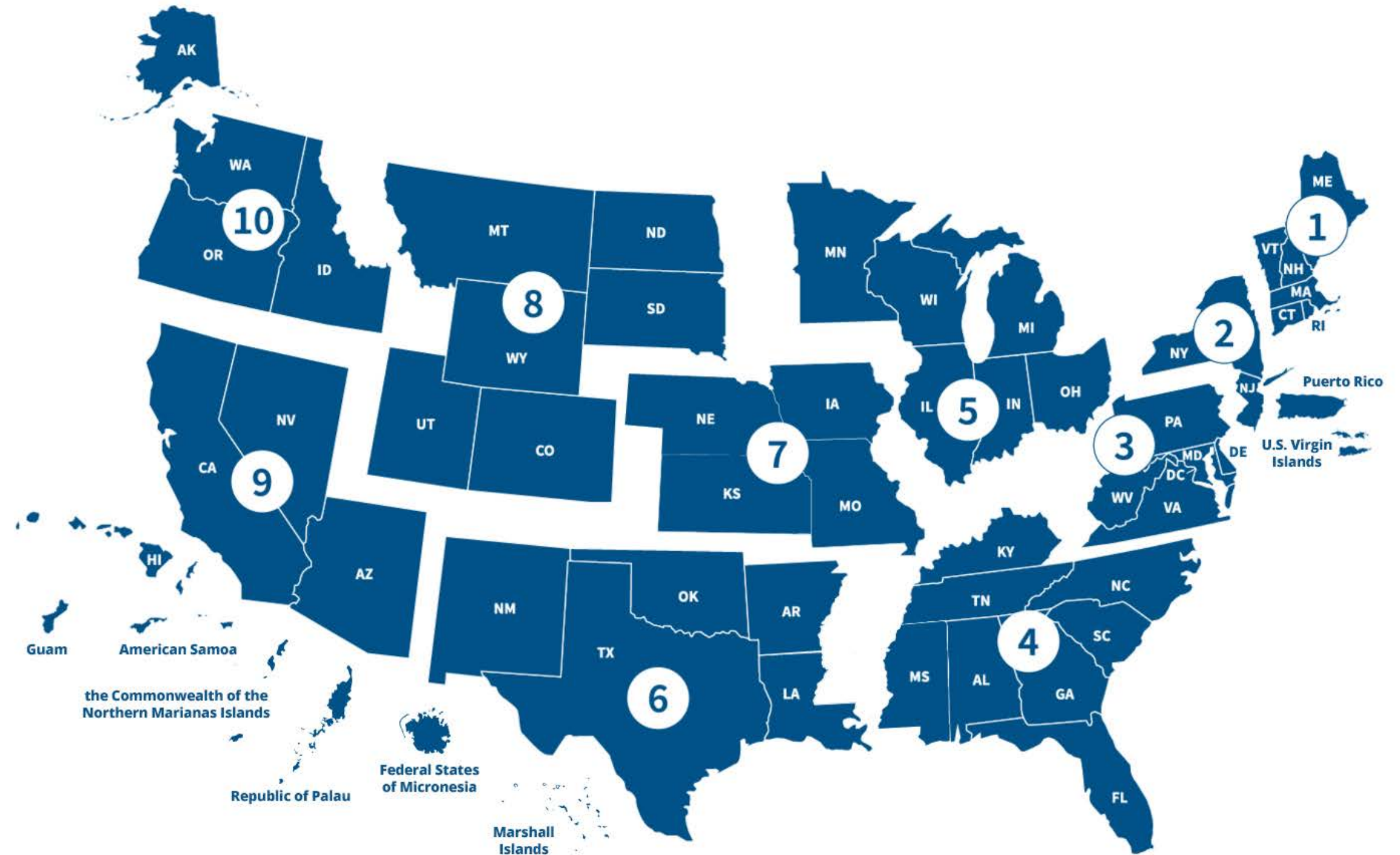
Emergency Preparedness

“To protect the health and safety of Louisianans by leading emergency preparedness, coordinating disaster response, and supporting resilient recovery efforts.”



Nationally

- Health and Human Services (HHS): Region 6
- FEMA: Region 6



Transition

- **LDH to assume on December 1:**
 - Full integration of Emergency Preparedness:
 - Transfer DCFS EP team to LDH Office of Surgeon General.
 - Rebrand DCFS EP as LDH ESF-6 Emergency Preparedness.
- **Prior to December 1:**
 - Establish MOU between LDH and DCFS for continued support from:
 - Child support enforcement staff, who provide ESF-6 site leadership in Central and North Louisiana.
 - Child welfare staff, who operate the Unaccompanied Child Shelter.
- Collaborate with GOHSEP to update all necessary documents (e.g., Governor's Executive Order, SEOP).

Louisiana's Emergency Support Functions (ESFs)

The State of Louisiana Emergency Operations Plan (EOP) identifies State Emergency Support Functions (ESFs) as the structure for organizing and coordinating state resources by area of function.

ESF-1 Transportation	ESF-2 Communications	ESF-3 Public Works	ESF-4 Firefighting	ESF-5 Emergency Management	ESF-6 Mass Care/ Human Services
ESF-7 Logistics	ESF-8 Public Health & Medical	ESF-9 Search & Rescue	ESF-10 Oil & Hazardous Materials	ESF-11 Agriculture & Natural Resources	ESF-12 Energy/Utilities (Water)
	ESF-13 Public Safety & Security	ESF-14 Long Term Recovery	ESF-15 External Affairs	ESF-16 Military Support	

Louisiana's Emergency Support Functions (ESFs)

ESF-6

- Co-lead with Louisiana Works (LW)
- Federal lead: FEMA and Homeland Security
- **Responsibilities:**
 - **Sheltering operations**
 - Maintain state evacuation registration system
 - Mass feeding (LW)
 - Short-term housing
 - **DSNAP**
 - Emergency repatriation

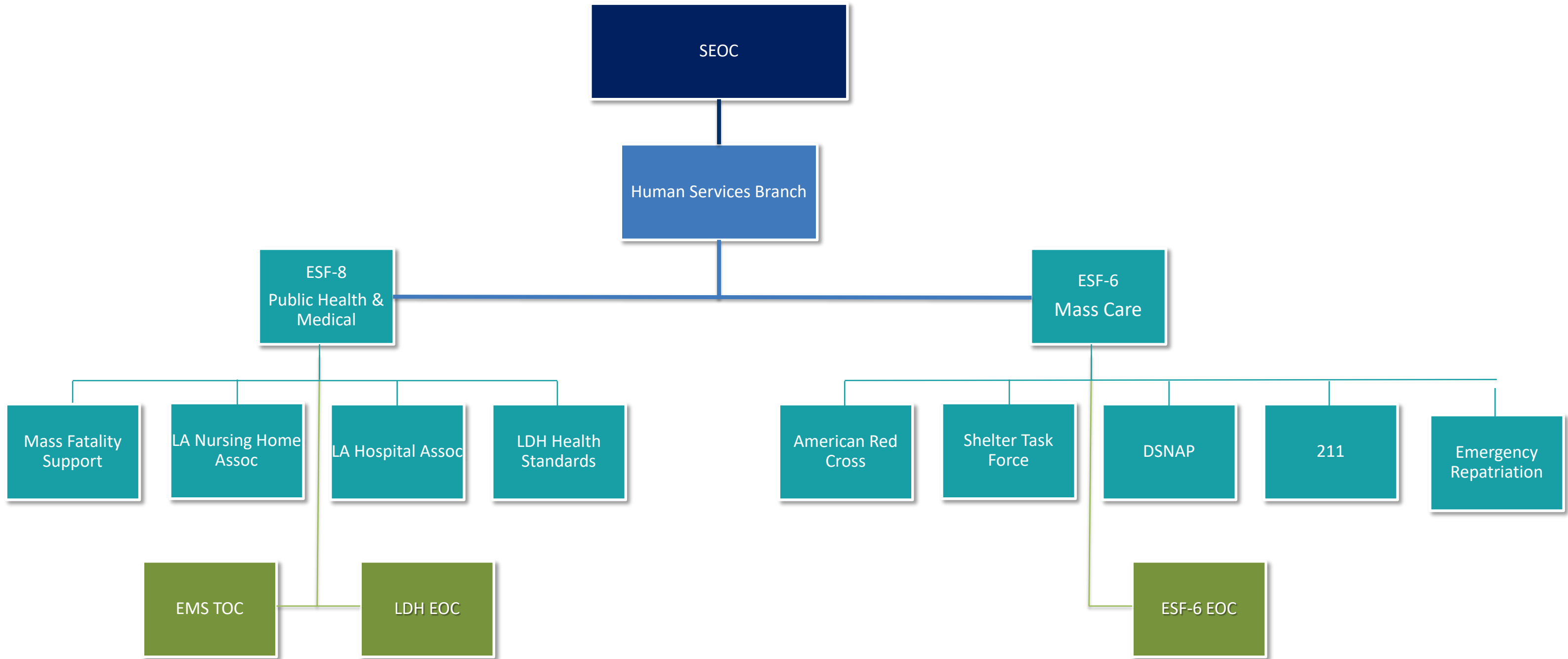
ESF-8

- State lead
- Federal lead: HHS
- **Responsibilities:**
 - **Medical Needs Sheltering**
 - Medical supplies and equipment
 - Patient movement coordination
 - Behavioral health services
 - Vector control (mosquito abatement)
 - Sanitation services
 - Mass fatality

ESF-12

- Co-lead (currently): LDH, Public Service Commission (PSC), and Department of Conservation and Energy (C&E)
- Federal lead: Department of Energy
- **Responsibilities:**
 - Drinking water: LDH
 - Oil and gas pipelines
 - Utility services

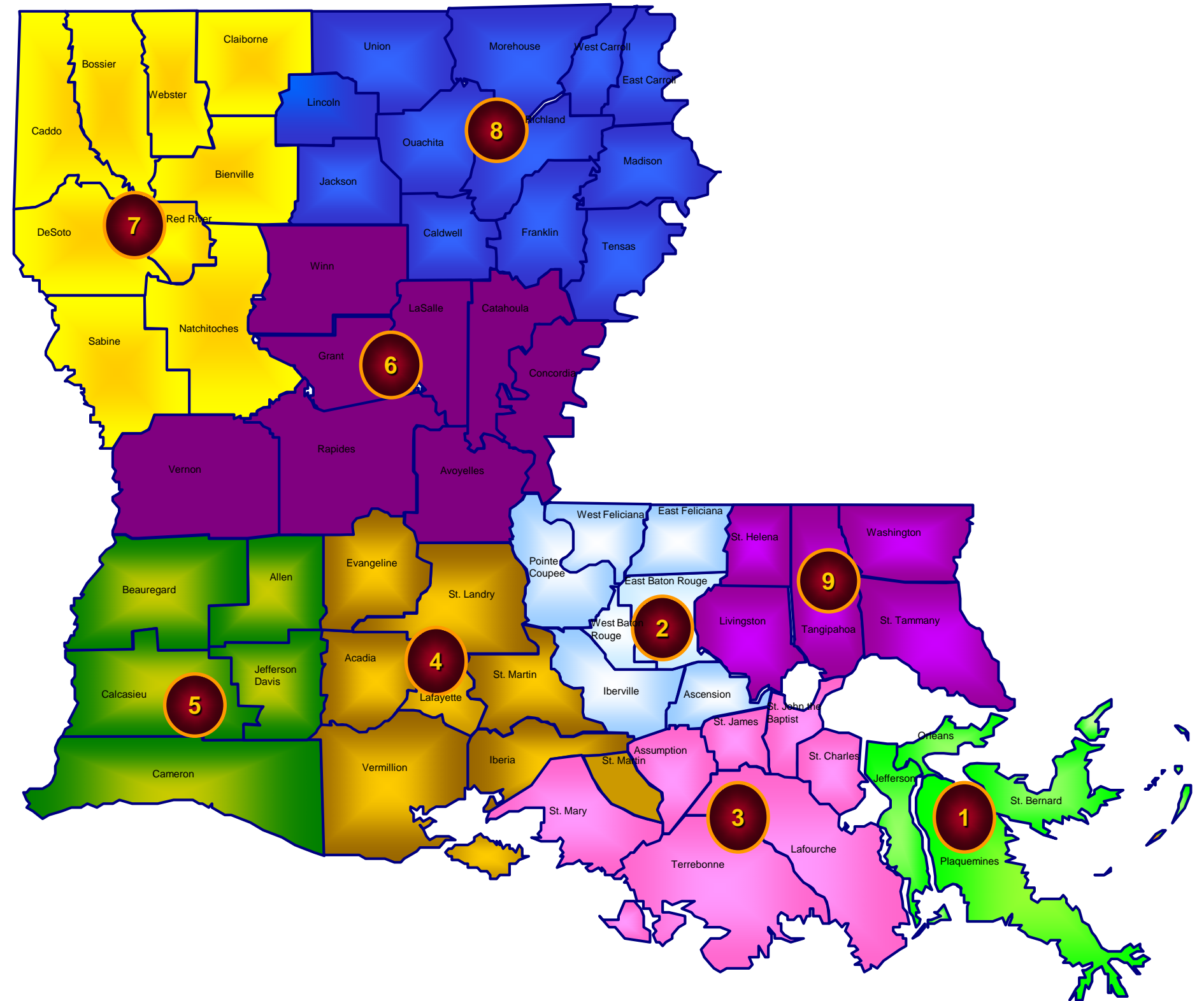
State Flow of Emergency Operations



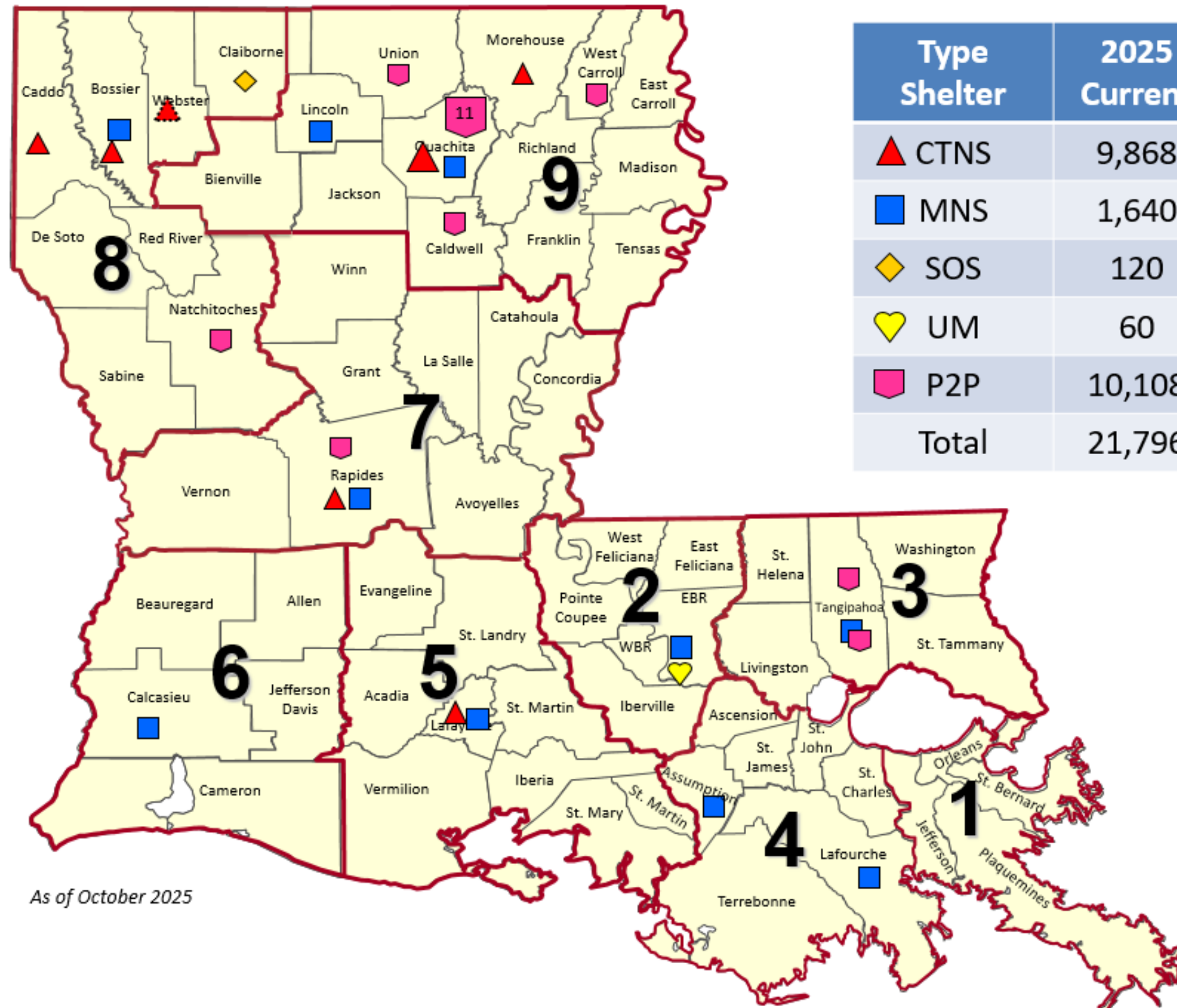
Regional Structures

The ESF-8 network is composed of designated regional coordinators (DRCs) and a public health emergency response coordinator (PHERC) in each region who represent community response partners such as hospitals, nursing homes, EMS providers, and other medical disciplines.

The ESF-6 network is composed of lead area managers (LAMs), DSNAP coordinators, and regional coordinators (RCs) to help provide structured support for staff assigned to ESF-6 positions, supporting agencies and parish staff to successfully fulfill our ESF-6 mission.



In-State Sheltering Capacities



Type Shelter	2025 Current	2026 Projection	Possible Plus Ups
▲ CTNS	9,868	19,268	
■ MNS	1,640	1,640	1,920
◆ SOS	120	120	
♥ UM	60	60	
■ P2P	10,108	10,108	
Total	21,796	31,196	33,116

As of October 2025

State-Run Shelter Costs

Annual Lease Costs

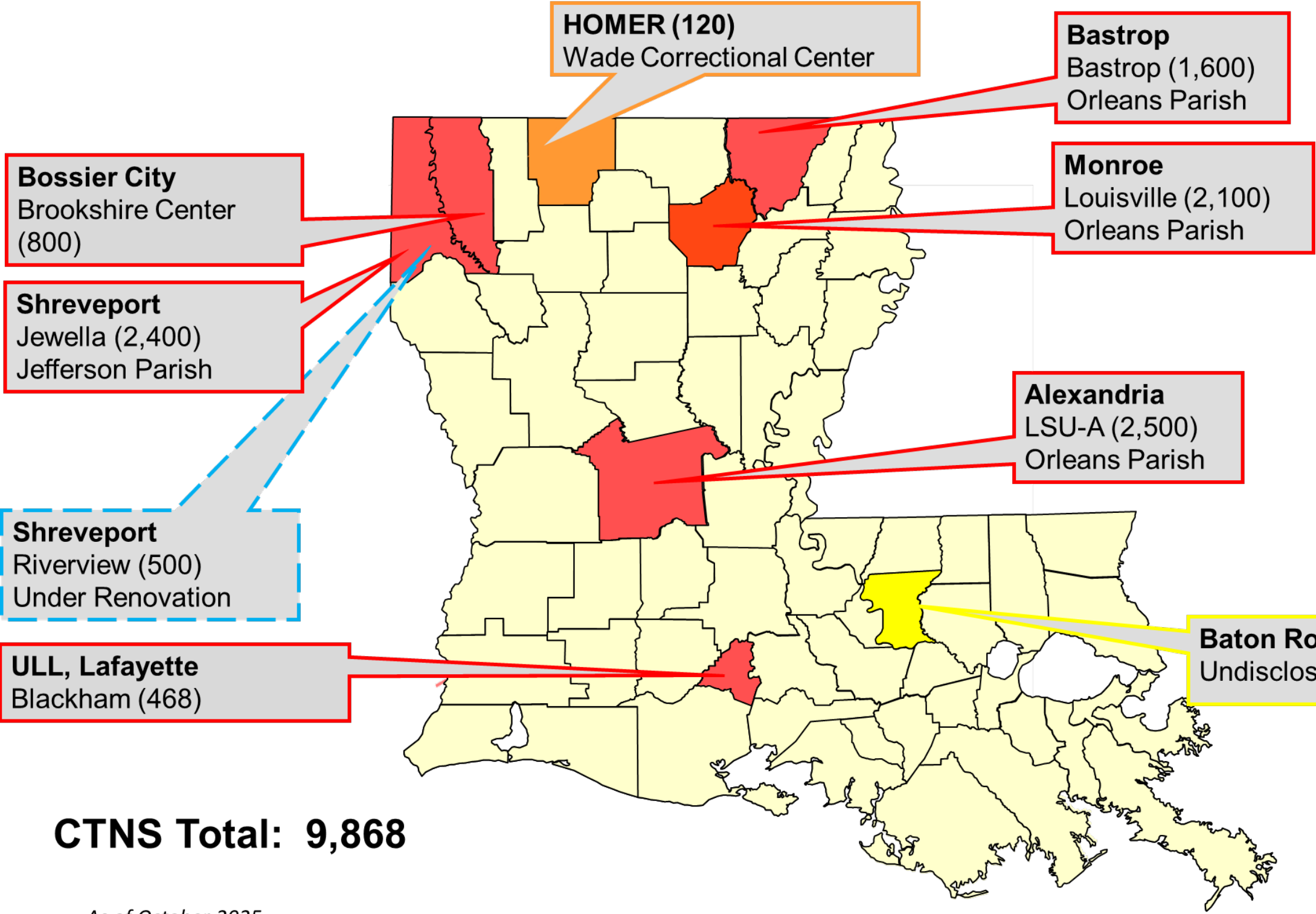
Jewella \$ 870,692.40

Bastrop \$ 311,327.88

Louisville \$ 763,344.00

Shelter Location	Shelter Type	Planning #	# of Days	ESF-6 (Staff / Leases)	ESF-8 Contract Staff	Other Support Agency Cost	WrapAround	TOTAL Estimated LDH Cost (not including Other Supporting agencies)	TOTAL Shelter Cost (State)
Alex Mega Shelter	CTNS	2500	7	\$ 157,031.60	\$ -	\$ 1,342,525.00	\$ 1,640,491.70	\$ 1,797,523.30	\$ 3,140,048.30
Jewella	CTNS	2400	7	\$ 151,149.88	\$ -	\$ 696,336.00	\$ 3,715,623.40	\$ 3,866,773.28	\$ 4,563,109.28
Shreveport Conv. Ctn	CTNS - Standby	1400	7	\$ 95,278.60	\$ -	\$ 484,766.00	\$ 2,879,316.95	\$ 2,974,595.55	\$ 3,459,361.55
Louisville	CTNS	2100	7	\$ 118,277.01	\$ -	\$ 666,899.00	\$ 5,013,550.10	\$ 5,131,827.11	\$ 5,798,726.11
Bastrop	CTNS	1600	7	\$ 124,105.20	\$ -	\$ 522,504.00	\$ 858,019.35	\$ 982,124.55	\$ 1,504,628.55
Baton Rouge River Ctn	CTNS - Standby	2300	7	\$ 123,509.00	\$ -	\$ 622,937.00	\$ 4,741,961.35	\$ 4,865,470.35	\$ 5,488,407.35
Brookshire Center	CTNS	800	7	\$ 467,590.40	\$ -	\$ 249,812.00	\$ 467,841.85	\$ 935,432.25	\$ 1,185,244.25
Blackham	CTNS	468	7	\$ 100,570.80	\$ -	\$ 163,428.92	\$ 808,099.65	\$ 908,670.45	\$ 1,072,099.37
Shreveport Riverview	CTNS	500	7	\$ 130,277.60	\$ -	\$ 171,755.00	\$ 659,975.05	\$ 790,252.65	\$ 962,007.65
Mega Shelter MNS	MNS	200	7	\$ 35,288.00	\$ 1,571,981.00	\$ 93,698.00	\$ 138,870.00	\$ 1,746,139.00	\$ 1,839,837.00
LSU Field House	MNS - A	500	7	\$ 118,214.80	\$ 3,929,952.50	\$ 171,755.00	\$ 813,012.55	\$ 4,861,179.85	\$ 5,032,934.85
Bossier Civic Center	MNS	200	7	\$ 110,725.20	\$ 1,571,981.00	\$ 93,698.00	\$ 331,420.25	\$ 2,014,126.45	\$ 2,107,824.45
ULM	MNS	150	7	\$ 79,282.80	\$ 1,178,985.75	\$ 80,688.50	\$ 288,047.05	\$ 1,546,315.60	\$ 1,627,004.10
Heymann	MNS	160	7	\$ 96,607.80	\$ 1,257,584.80	\$ 83,290.40	\$ 306,364.85	\$ 1,660,557.45	\$ 1,743,847.85
R1 MNS	MNS	200	7	\$ 84,692.20	\$ 1,571,981.00	\$ 93,698.00	\$ 670,570.25	\$ 2,327,243.45	\$ 2,420,941.45
McNeese	MNS	150	7	\$ 118,214.80	\$ 1,178,985.75	\$ 63,528.50	\$ 628,807.45	\$ 1,926,008.00	\$ 1,989,536.50
SLU	MNS	200	7	\$ 96,926.80	\$ 1,571,981.00	\$ 93,698.00	\$ 136,770.00	\$ 1,805,677.80	\$ 1,899,375.80
Nicholls State	MNS	200	7	\$ 65,282.80	\$ 1,571,981.00	\$ 76,538.00	\$ 307,420.25	\$ 1,944,684.05	\$ 2,021,222.05
Assumption Community Center	MNS	200	7	\$ 65,282.80	\$ 1,571,981.00	\$ 93,698.00	\$ 307,420.25	\$ 1,944,684.05	\$ 2,038,382.05
TOTALS		16,228		\$ 2,338,308.09	\$ 16,977,394.80	\$ 5,865,253.32	\$ 24,713,582.30	\$ 44,029,285.19	\$ 49,894,538.51

Critical Transportation Needs Shelters
 Unaccompanied Minors Shelter
 Sex Offenders Shelter

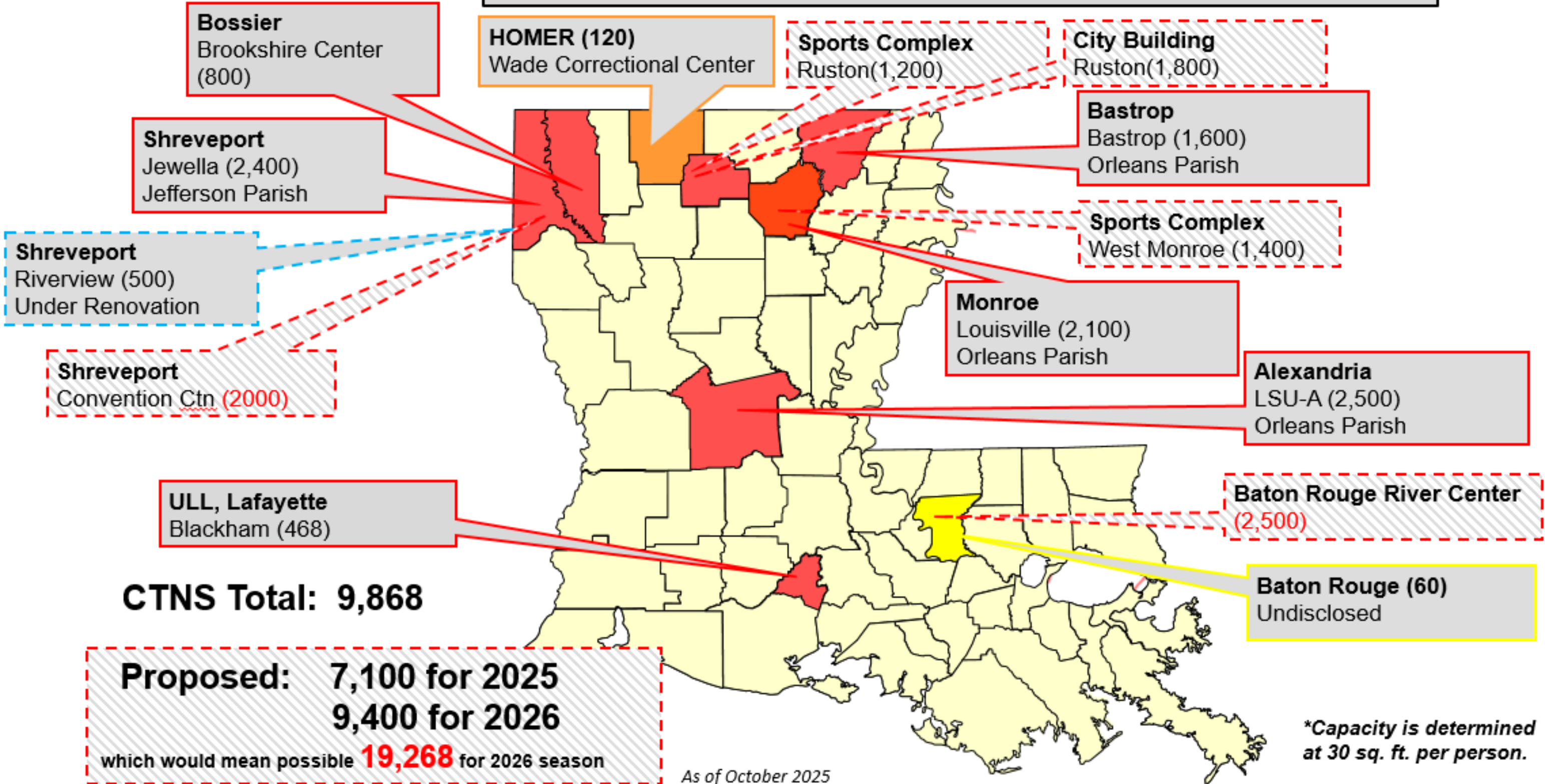


Shelter Location	TOTAL Estimated LDH Cost per week
Alex Mega Shelter CTN	\$ 1,797,523.30
Jewella	\$ 3,866,773.28
Louisville	\$ 5,131,827.11
Bastrop	\$ 982,124.55
Brookshire Center	\$ 935,432.25
Blackham	\$ 908,670.45
Shreveport Riverview	\$ 790,252.65
WEEKLY TOTAL	\$ 14,412,603.59

CTNS Total: 9,868

As of October 2025

	Critical Transportation Needs Shelters
	Unaccompanied Minors Shelter
	Sex Offenders Shelter



CTNS Total: 9,868

Proposed: 7,100 for 2025
9,400 for 2026
 which would mean possible **19,268** for 2026 season

As of October 2025

**Capacity is determined at 30 sq. ft. per person.*



Medical Needs Shelters (MNS)

Alternate Medical Needs Shelters (MNS)

Bossier City
200
Bossier Civic Center

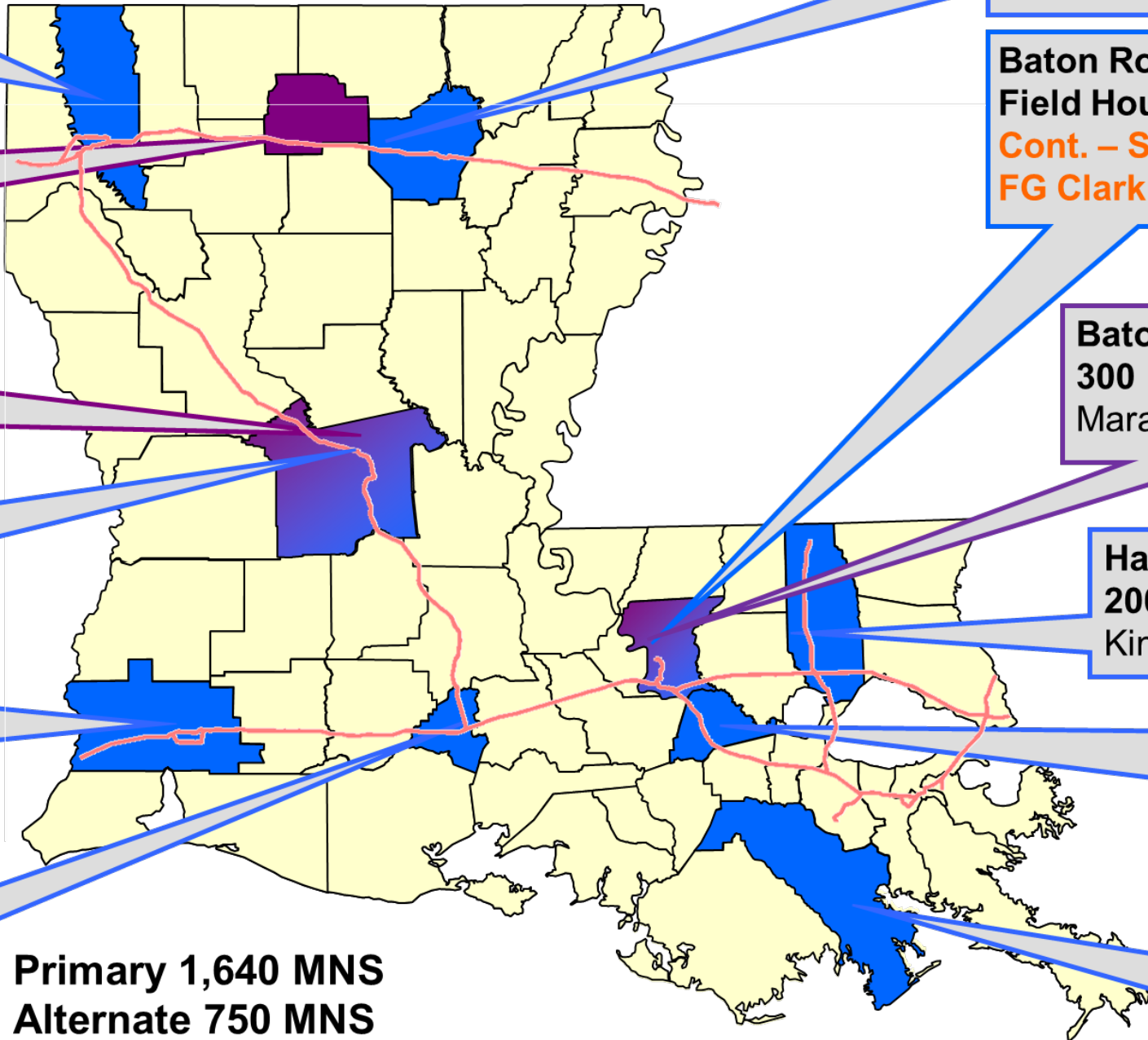
Grambling
200
Activity Center

Alexandria
250
Randolph Riverfront

LSU Alexandria
200 MNS
State Shelter

Lake Charles – McNeese
150
Recreation Complex

Lafayette
160
Heymann Center



Monroe –ULM
150
ULM Activity Center

Baton Rouge– LSU
Field House 500
Cont. – SU 250
FG Clark Coliseum

Baton Rouge – LSU
300
Maravich Center

Hammond – SLU
200
Kinesiology Bldg.

Assumption – ACC
80
Assumption Community Center

Thibodaux – Nicholls
200
Ayo Hall (Post Storm)

Primary 1,640 MNS
Alternate 750 MNS

Shelter Location	TOTAL Estimated LDH Cost per week
Mega Shelter MNS	\$ 1,746,139.00
LSU Field House	\$ 4,861,179.85
Bossier Civic Center	\$ 2,014,126.45
ULM	\$ 1,546,315.60
Heymann	\$ 1,660,557.45
R1 MNS	\$ 2,327,243.45
McNeese	\$ 1,926,008.00
SLU	\$ 1,805,677.80
Nicholls State	\$ 1,944,684.05
Assumption Community Center	\$ 1,944,684.05
WEEKLY TOTALS	\$ 21,776,615.70

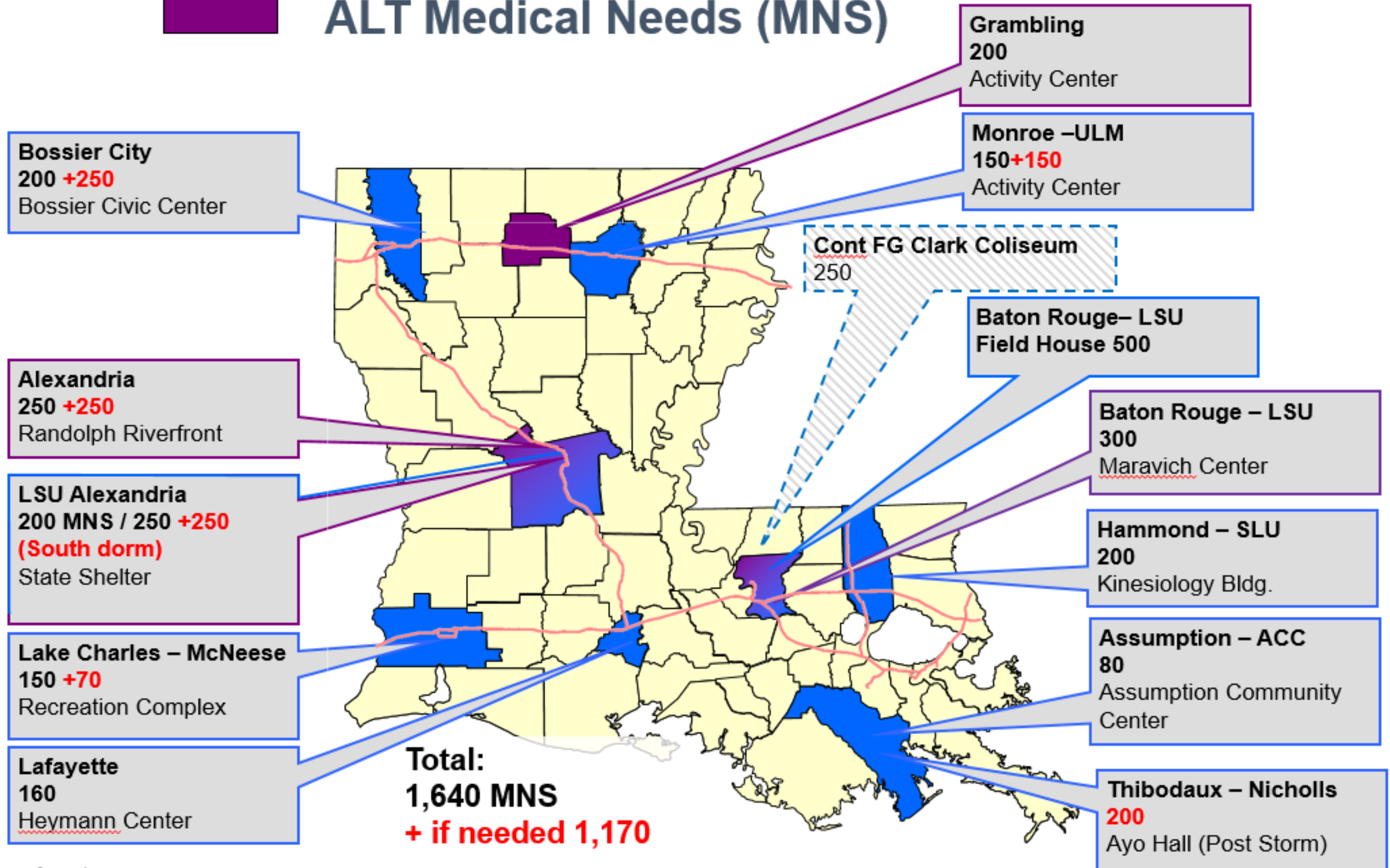
As of October 2025



Medical Needs Shelters (MNS)

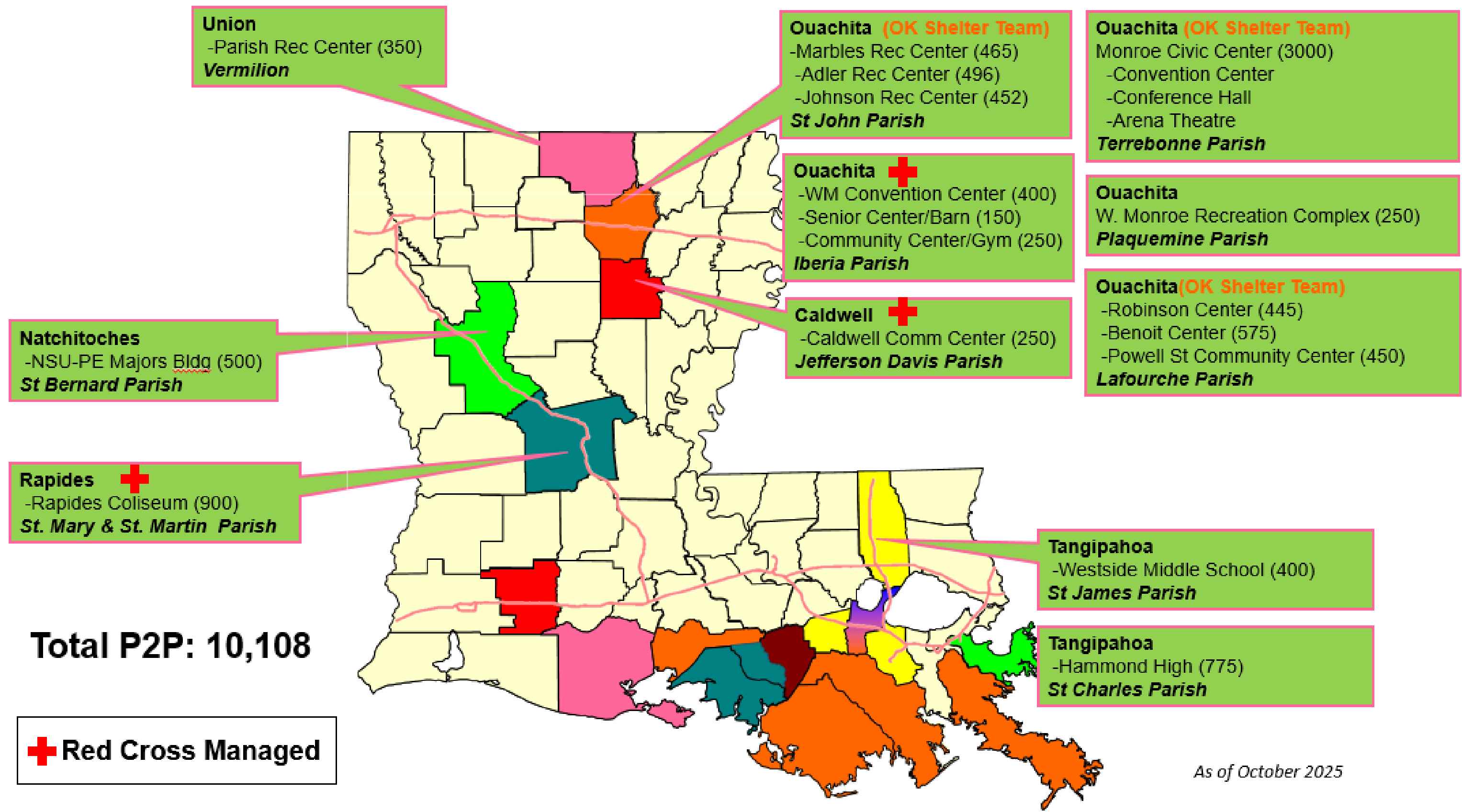


ALT Medical Needs (MNS)



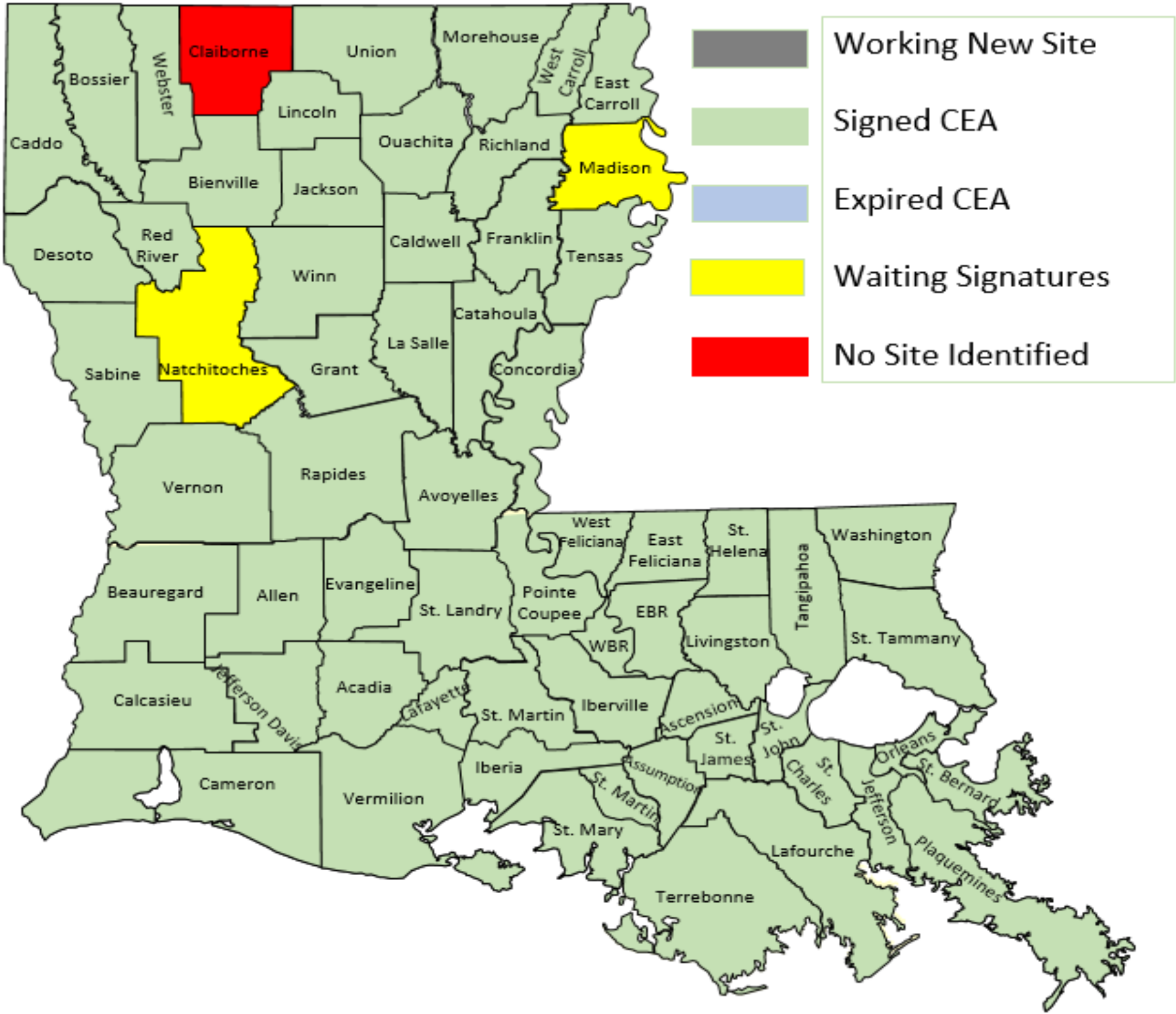
As of October 2025

Point to Point Shelters



As of October 2025

DSNAP Status as of October 2025



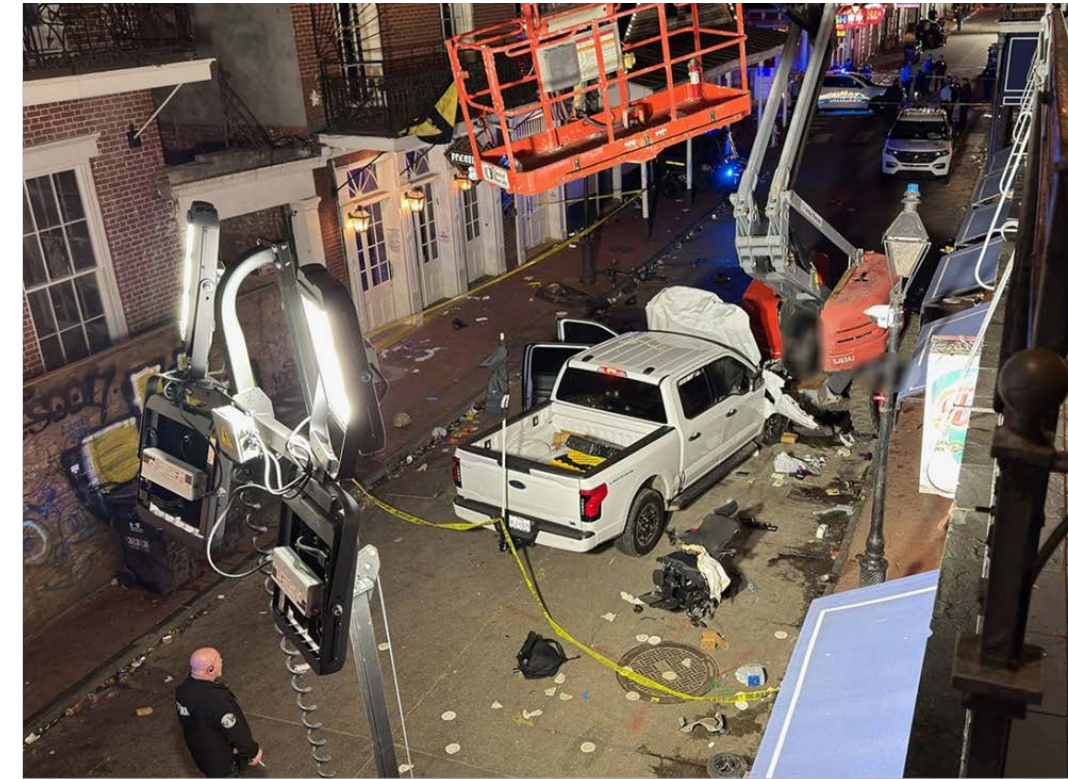
DSNAP Status as of October 2025

- CEAs are maintained for facilities in all 64 parishes.
- Parishes must request DSNAP through WebEOC if the parish receives FEMA Individual Assistance (IA) approval.
- The current federal approved plan calls for a hybrid approach to DSNAP in which applications are done virtually, and sites are open for EBT card insurance and for those needing additional assistance.
- DSNAP is designed for non-SNAP who have had an adverse effect (lost food, etc.) due to an incident.

REGIONS	# PARISHES	# SITES	CEA COMPLETE	CEAs AWAITING SIGNATURES	#PARISHES WITHOUT SITES	PARISH NAME
1	4	9	8	0	0	N/A
2	6	10	10	0	0	N/A
3	5	12	12	0	0	N/A
4	7	16	16	0	0	N/A
5	8	9	9	0	0	N/A
6	5	5	5	0	0	N/A
7	8	8	8	0	0	N/A
8	8	7	6	1	1	N/A
9	13	17	15	2	0	N/A
	64	93	89	3	1	

2025 Events Recap

- **Bourbon Street Mass Casualty Incident (MCI)**
 - Region 1: January 1-27, 2025
 - 49 patients, 7 hospitals
- **Winter Weather: South Louisiana**
 - Regions 1-5, 9: January 20-23, 2025
 - Orleans Transitional Shelter
- **Super Bowl**
 - Region 1: February 9, 2025
 - CHEMPACK movement
 - BioWatch monitoring and testing
- **Louisiana Wireless Information Network (LWIN)/Phone Communications Outage**
 - Regions 6,7, 8: June 16, 2025
- **Smitty's Supply Fire**
 - Region 9: August 22, 2025
- **Saltwater Intrusion**
 - Region 1: September 2025
- **Phone Outage – 911 Centers**
 - Statewide: September 25, 2025



Source: CNN



Source: Louisiana Illuminator

Mitigation Initiatives

Communications

- LDH redundancy with CradlePoints at all facilities
- Louisiana Emergency Response Network (LERN) Code-Division Multiple Access (CDMA) router
- Exploring Starlink for LDH facilities, as well as healthcare facilities

Patient Reconciliation and Tracking

- Mass casualty management and reconciliation
- Family reunification planning

Shelter Space

- Identifying and tracking additional in-state shelter space
- Re-engaging the Louisiana Shelter Task Force for general population sheltering

How to Support Emergency Preparedness

Generators: Independent and assisted living facilities

- Louisiana Act No. 253
 - Requires generators at nursing facilities (legis.la.gov/Legis/Law.aspx?d=285248)
- New Orleans Code of Ordinances – Chapter 30, Article XII
 - Requires generators at nursing facilities
(library.municode.com/LA/New%20Orleans/codes/code_of_ordinances?nodeId=PTIICO_CH30BU_ARTXIIIINUHO)

Get involved!

- Exercises, planning, and mitigation activities occur **year-round**, not just during hurricanes — including chemical incidents, cyber threats, severe weather, and mass gatherings (e.g., Super Bowl LIX).
- Reach out to your local OEP directors and healthcare coalitions to see how you can support.

Emergency preparedness is more than a response plan — it's an ongoing statewide mission.

THANK YOU

Carl A. Flores

Executive Director of Emergency Preparedness

Ricky Montet

Director of DCFS Emergency Preparedness