

MARCH 1, 2019 THROUGH FEBRUARY 28, 2021

**COMPARISON OF LOUISIANA
MANAGED CARE ORGANIZATION
ENCOUNTER DATA TO CASH
DISBURSEMENTS FOR
AMERIHEALTH CARITAS LOUISIANA**



MAY 6, 2021





TABLE OF CONTENTS

EXECUTIVE SUMMARY	3
DEFINITIONS AND ACRONYMS	4
STUDY PURPOSE	6
DATA SOURCES.....	7
ANALYSIS.....	8
DATA ANALYSIS ASSUMPTIONS	9
POTENTIAL DATA ISSUES.....	10
AMERIHEALTH CARITAS LOUISIANA – ENTIRE PLAN.....	11
VALUE-ADDED SERVICES (VAS) SUMMARY	12
CALCULATED VOID AND DUPLICATE SUMMARY	13
SUMMARY REPORTING CHARTS	14
AMERIHEALTH CARITAS LOUISIANA – SOUTHEASTTRANS (NET).....	15
AMERIHEALTH CARITAS LOUISIANA – MODIVCARE (NET).....	16
AMERIHEALTH CARITAS LOUISIANA – AVESIS VISION (VISION SERVICES).....	17
AMERIHEALTH CARITAS LOUISIANA – VSP (VISION SERVICES)	18
AMERIHEALTH CARITAS LOUISIANA – AVESIS DENTAL (DENTAL SERVICES).....	19
AMERIHEALTH CARITAS LOUISIANA – DINA DENTAL (DENTAL SERVICES)	20
AMERIHEALTH CARITAS LOUISIANA – PERFORMRX (PHARMACY BENEFITS).....	21
AMERIHEALTH CARITAS LOUISIANA – NON-VENDOR	22





The May 2021 Louisiana Encounter Reconciliation report is an analysis of AmeriHealth Caritas Louisiana’s (ACLA) non-vendor and delegated vendors’ encounters compared to the payments to service providers in the cash disbursement journals (CDJ). Below is a summary of the cumulative completion percentages for all delegated vendors and non-vendor paid encounters submitted to Louisiana’s fiscal agent contractor (FAC), Gainwell Technologies (Gainwell), for the reporting period of March 1, 2019 through February 28, 2021.

Per the Louisiana Department of Health (LDH), effective with the November 2020 reporting period, the ninety-five percent (95%) encounter completeness threshold became ninety-seven percent (97%) but no greater than one hundred percent (100%) of cash disbursements. This revision to the encounter completeness threshold can be found in Amendment 2 of the MCO contract effective Change to July 1, 2020.

AmeriHealth Caritas Louisiana — Cumulative Completion Percentages	
MCO/Delegated Vendor	Cumulative Completion (%)
Entire Plan	97.72%
Southeastrans (Non-Emergency Transportation)	98.84%
ModivCare (Non-Emergency Transportation)	99.13%
Avesis Vision (Vision Services)	99.06%
VSP (Vision Services)	98.25%
Avesis Dental (Dental Services)	97.36%
DINA Dental (Dental Services)	98.74%
PerformRx (Pharmacy Benefits)	98.80%
ACLA - Non-Vendor	97.22%





The following terms are used throughout this document:

- **Bayou Health** – The state of Louisiana’s Medicaid managed care program name from inception through April 2016. Starting in February 2012, many members of the traditional Medicaid “delivery system” were transitioned from fee-for-service to Bayou Health. Prior to February 1, 2015, Bayou Health’s executed contracts included three risk-based prepaid health plans and two non-risk based shared savings plans (**Bayou Health 1.0**). Beginning February 1, 2015, the prepaid risk bearing managed care organization (MCO) model became the only delivery system for the Bayou Health program (**Bayou Health 2.0**). Effective May 2016, the Louisiana Medicaid managed care program was rebranded and became **Healthy Louisiana**.
- **Cash Disbursement Journal (CDJ) Monthly Reported Total** – The sum of all payments from an MCO or delegated vendor to service providers for a given month as reported by the MCO to the Louisiana Department of Health (LDH).
- **CDJ Cumulative Reported Total** – The sum of all payments from an MCO or delegated vendor to service providers for the reconciliation period as reported by the MCO to the LDH. This amount is inclusive of all amounts within the reporting period.
- **Cumulative Encounter Total** – The sum of all paid amounts on the encounters submitted to and stored in the fiscal agent contractor’s (FAC) system. This amount is inclusive of all amounts within the reporting period.
- **Cumulative Variance** – The difference between the cumulative encounter total and the CDJ cumulative reported total.
- **DXC Technology (DXC)** – State fiscal agent contractor prior to October 1, 2020. Now known as Gainwell.
- **Fiscal Agent Contractor (FAC)** – A contractor selected to design, develop and maintain the claims processing system (Medicaid Management Information System); Gainwell is the current FAC.
- **Gainwell Technologies (Gainwell)** – State fiscal agent contractor, known as DXC Technology prior to October 1, 2020.
- **Healthy Louisiana** – The state of Louisiana’s Medicaid managed care program name as of May 2016, formerly Bayou Health.
- **Louisiana Department of Health (LDH)** – The agency in charge of overseeing the health services for the citizens of the state of Louisiana.
- **Managed Care Organization (MCO)** – A private organization that has entered into a risk-based contractual arrangement with LDH to obtain and finance care for enrolled Medicaid or Louisiana Children’s Health Insurance Program (LaCHIP) members. MCOs receive a capitation or per member, per month (PMPM) payment from LDH for each enrolled member. During the reporting period, five MCOs were operating in Louisiana. They are Healthy Blue – formerly Amerigroup Louisiana, Inc., AmeriHealth Caritas Louisiana (ACLA), Louisiana Healthcare Connections (LHCC), Aetna Better Health of Louisiana (Aetna), and United Healthcare Community Plan (UHC).

LA MCO Encounter and CDJ Comparison

- **Medicaid Management Information System (MMIS)** – The claims processing system used by the FAC to adjudicate Louisiana Medicaid and LaCHIP claims. MCO submitted encounters are loaded into this system and assigned a unique claim identifier.
- **Molina Medicaid Solutions (MMS)** – State fiscal agent contractor prior to October 1, 2018. Now known as Gainwell.
- **Monthly Encounter Total** – The sum of all paid amounts for a given month on the encounters submitted to and stored in the FAC’s system.
- **Monthly Variance** – The difference between the monthly encounter total and the CDJ monthly reported total.
- **Value-Added Services (VAS)** – A covered service provided by the MCO to its members that is currently a non-covered service in the state’s fee-for-service plan, for which the MCO received no additional capitated payment. Also known as Expanded Services.



The Louisiana Department of Health (LDH) engaged Myers and Stauffer LC to analyze Healthy Louisiana encounter data that has been submitted by the managed care organizations (MCO) to Louisiana's fiscal agent contractor (FAC), Gainwell, and complete a comparison of the encounters to cash disbursement journals provided by each MCO. For purposes of this analysis, "encounter data" are claims that have been paid by MCOs or delegated vendors (e.g., vision and pharmacy) to health care providers that have provided health care services to members enrolled with the MCO. Encounter data is submitted to LDH via the FAC for LDH's use in rate setting, federal reporting, program management and oversight, tracking, accounting, ad hoc analyses, and other activities.

LDH requested that, for this study, we estimate the percentage of each MCO delegated vendor paid encounters that appear to be included in the FAC's database. This analysis includes these percentages for the entire plan as well as separate vision, non-emergency transportation (NET), dental value-added service (VAS), and pharmacy delegated vendor encounters paid during the period March 1, 2019 through February 28, 2021. We have also included the percentages for total non-vendor MCO paid encounters.

Our work was performed in accordance with American Institute of Certified Public Accountants (AICPA) professional standards for consulting engagements. We were not engaged to, nor did we perform, an audit, examination, or review services; accordingly, we express no opinion or conclusion related to the procedures performed or the information and documentation we reviewed. In addition, our engagement was not specifically designed for, and should not be relied on, to disclose errors, fraud, or other illegal acts that may exist.

The results of our engagement and this report are intended only for the internal use of the Louisiana Department of Health (LDH) and should not be used for any other purpose.





Myers and Stauffer LC receives encounter data on a monthly basis from the FAC in a standardized data extract containing MCO institutional, medical, and pharmacy encounters. These data extracts included encounters from the three MCOs operating in Louisiana between February 1, 2012 and January 31, 2015 (Healthy Blue – formerly Amerigroup Louisiana, Inc., ACLA and LHCC). Effective February 1, 2015, two additional health plans (Aetna and UHC) joined the other three MCOs to provide services to the enrolled members and were added to the encounter data extracts in early May 2015. The data used for this report includes encounters received and accepted by the FAC and transmitted to Myers and Stauffer LC through March 30, 2021.

Myers and Stauffer LC also receives, from each MCO, monthly cash disbursement journals (CDJ) containing claim payment transactions in a standardized format. The CDJ files used for this report have transaction dates from March 1, 2019 through February 28, 2021. Each MCO was also asked to provide any additional information related to its cash disbursements not reflected in the MCO encounter data.



Encounters from institutional, medical, and pharmacy claim types were combined on like data fields. We analyzed the line reported information of each encounter to capture the amount paid on the entire claim. Encounter totals were calculated by summarizing the data by the MCO paid date, MCO identification number (ID), and specific delegated vendor criteria. MCO submitted cash disbursements were summarized by paid date, MCO ID, and specific delegated vendor criteria to create a matching table. These matching tables were combined using common fields between the tables and were used to produce the results.

Based on criteria provided by the MCO, we identified AmeriHealth Caritas Louisiana encounters as follows:

- ❖ ***Southeastrans - Non-Emergency Transportation (NET)***
 - Plan ICN field prefix contains 'SE' in the third and fourth positions.
- ❖ ***ModivCare (formerly known as LogistiCare) - Non-Emergency Transportation (NET)¹***
 - Plan ICN field prefix contains 'LC' in the third and fourth positions.
- ❖ ***Avesis Vision - Vision Services***
 - Plan ICN field contains 'AV' in the third and fourth positions of the string.
- ❖ ***VSP - Vision Services³***
 - Plan ICN field contains 'VV' in the second and third positions of the string.
 - Plan ICN field prefix contains 'VV' in the third and fourth positions.
- ❖ ***Avesis Dental - Dental Services***
 - Plan ICN field prefix contains 'AD' in the third and fourth positions.
- ❖ ***DINA Dental - Dental Services⁴***
 - Plan ICN field prefix contains 'DD' in the third and fourth positions.
- ❖ ***PerformRx - Pharmacy Benefits***
 - Claim type code of '12'.
- ❖ ***AmeriHealth Caritas Louisiana - Non-Vendor***
 - Plan ICN field contains a 'Z' in the first position of the string and does not contain 'VV' in the second and third positions of the string.
 - Plan ICN field prefix contains 'LA' in the third and fourth positions.
 - All other plan submitted encounters that do not meet the listed criteria.

1 – Replaced by Southeastrans – Effective April 1, 2018

2 – Replaced by DINA Dental – Effective January 1, 2018

3 – Replaced by Avesis Vision – Effective January 1, 2020

4 – Replaced by Avesis Dental – Effective January 1, 2020



**DATA ANALYSIS ASSUMPTIONS**

1. This analysis is performed on encounter data that was submitted by the MCOs to the FAC and loaded into the FAC MMIS. Encounters submitted by any MCO that were rejected by the FAC for errors in submission or other reasons are not being transmitted to Myers and Stauffer LC.
2. For the purposes of this study, the payment amounts associated with denied encounters are identified as zero dollars in the encounter reconciliation analysis since they bear no impact on cash disbursements.
3. A voiding encounter has the same paid date as the original/voided encounter, which may differ from when the void or adjustment occurred. Therefore, the voiding encounters were coded to match the adjustment claim's paid date to allow for the proper matching of cash disbursements that occurred due to these void transactions. However, we were unable to reallocate the void encounters in which there was not an associated adjustment claim.
4. Instances were noted where a record's transaction type implied a specific sign valuation for the MCO paid amount (e.g., a void implied that the amount should be negative). However, the data submitted for these records did not accurately reflect the correct sign valuation. In addition, the paid amounts of certain void and backout encounters did not accurately reflect the paid amount of the corresponding encounter being adjusted. Where possible, these CDJ and/or encounter payment amounts were adjusted to reflect the expected sign and amount of the payment in accordance with the transaction type.
5. We identified potential duplicate encounters (Table 3). We analyzed the encounter and CDJ submissions to conclude that some of these potential duplicates appear to be partial payments, some are actual duplicate submissions, and some are replacement claims without a matching void. At the direction of LDH, we have attempted to adjust our totals to reflect the actual payment made and have removed duplicate payment amounts from our analysis. Lists of these potential duplicates, identified in previous report analyses, were provided to ACLA for examination. We have reviewed ACLA's disputed duplicate response files submitted to us as of March 20, 2021. The accepted responses have been incorporated into the analysis for this report. Responses requiring further explanation have not been added to this report and will be resubmitted to the MCO.
6. We instructed the MCOs to exclude referral fees, management fees, and other non-encounter related fees from the CDJ data that is submitted to Myers and Stauffer LC. We reviewed the CDJs for these payments and removed them from the analysis when they were identified.
7. Separately itemized interest expenses are excluded from the CDJ and encounter totals when the interest amounts are included in the MCO paid amounts on the encounters and/or CDJ transactions.
8. The short run-out period for encounter submissions may not allow sufficient time for the MCOs to resolve encounter submission issues noted in previous reconciliation reports. This may result in lower completion percentages when reconciling the encounters to CDJ totals.
9. Cumulative completion percentages exceeding 100 percent were noted for value-added service (VAS) totals for Non-Vendor and VSP Vision. So that the impacted amounts do not overstate the Entire Plan and VAS results, we have decreased the applicable encounters' monthly reported totals by the variances between the encounter data and cash disbursement journals. Therefore, the cumulative completion percentages were decreased to a maximum of 100 percent (Table 2).
10. Opportunities for improving the encounter reconciliation process have been identified during analysis of the encounter data and cash disbursement journals, as well as frequent interactions with the MCOs, their delegated vendors, LDH, and the FAC. While we have attempted to account for these situations, other potential issues within the data may exist that have not yet been identified which may require us to restate a report or modify reconciliation processes in the future.



POTENTIAL DATA ISSUES

1. There are instances where the monthly completion percentages in the entire plan, delegated vendor, and/or non-vendor completion tables on the following pages exceeded 100 percent during some months of the reporting period. These overstated monthly completion rates may be due to certain claim voids and replacements that were absent from the encounter data, but were accounted for in the CDJ. Also, duplicate records may have existed in the encounter data that we were unable to identify and remove. Additionally, CDJ payment dates may not have matched the payment dates that were reported in the encounter data.
2. We noted that Avesis Dental's September 2020 to February 2021 monthly completion percentages are above the 100 percent threshold at 119.67, 109.39, 105.31, 105.79, 103.53, and 113.66 percent, respectively. This appears to be due to missing CDJ transactions when compared to their corresponding encounters. We recommend AmeriHealth Caritas Louisiana work with LDH, Avesis Dental, and Gainwell to identify and resolve any encounter data issues.
3. DINA Dental's August 2019 and June 2020 monthly completion percentages are above the 100 percent threshold at 101.20 and 504.48 percent, respectively. This appears to be due to missing CDJ transactions when compared to the encounters. We recommend AmeriHealth Caritas Louisiana continue to work with LDH, DINA Dental, and Gainwell to identify and resolve any CDJ and/or encounter data issues.
4. We noted that AmeriHealth Caritas Louisiana's Non-Vendor has several months where the monthly completion percentages are below the 97 percent threshold. This appears to be due to missing encounters when compared to CDJ transactions. Additionally, the paid month September 2020 exceeds the 100 percent threshold at 105.54 percent. This appears to be due to paid amount differences between CDJ transactions and their corresponding encounters. We recommend AmeriHealth Caritas Louisiana work with LDH and Gainwell to identify and correct any potential issues with encounter data submissions.





AMERIHEALTH CARITAS LOUISIANA – ENTIRE PLAN

AmeriHealth Caritas Louisiana appears to have submitted approximately 97 percent of their encounter data for this period, with a cumulative monthly range between 96 percent and 98 percent. Monthly percentages exceeded 100 percent during a few months of the reporting period. Please reference potential data issue number 1 on page 10 for an explanation of the possible causes.

Table 1 — AmeriHealth Caritas Louisiana (Entire Plan)

Paid Month	CDJ Monthly Reported Total	Monthly Encounter Total	Monthly Variance	CDJ Cumulative Reported Total	Cumulative Encounter Total	Cumulative Variance	Monthly Completion Percentage	Cumulative Completion Percentage
March 2019	\$70,576,349	\$69,250,567	(\$1,325,783)	\$70,576,349	\$69,250,567	(\$1,325,783)	98.12%	98.12%
April 2019	\$67,380,282	\$65,730,336	(\$1,649,945)	\$137,956,631	\$134,980,903	(\$2,975,728)	97.55%	97.84%
May 2019	\$68,511,838	\$65,816,255	(\$2,695,583)	\$206,468,469	\$200,797,158	(\$5,671,311)	96.06%	97.25%
June 2019	\$64,514,440	\$61,353,159	(\$3,161,282)	\$270,982,909	\$262,150,316	(\$8,832,593)	95.09%	96.74%
July 2019	\$74,988,108	\$73,316,311	(\$1,671,798)	\$345,971,018	\$335,466,627	(\$10,504,391)	97.77%	96.96%
August 2019	\$69,954,718	\$68,993,967	(\$960,751)	\$415,925,736	\$404,460,594	(\$11,465,141)	98.62%	97.24%
September 2019	\$72,677,440	\$72,175,607	(\$501,834)	\$488,603,176	\$476,636,201	(\$11,966,975)	99.30%	97.55%
October 2019	\$73,281,361	\$71,903,551	(\$1,377,811)	\$561,884,538	\$548,539,752	(\$13,344,786)	98.11%	97.62%
November 2019	\$77,928,330	\$76,461,969	(\$1,466,361)	\$639,812,868	\$625,001,720	(\$14,811,147)	98.11%	97.68%
December 2019	\$66,991,688	\$65,538,511	(\$1,453,177)	\$706,804,555	\$690,540,231	(\$16,264,324)	97.83%	97.69%
January 2020	\$76,621,744	\$72,958,479	(\$3,663,266)	\$783,426,300	\$763,498,710	(\$19,927,590)	95.21%	97.45%
February 2020	\$72,726,590	\$70,477,370	(\$2,249,220)	\$856,152,889	\$833,976,080	(\$22,176,810)	96.90%	97.40%
March 2020	\$79,763,150	\$76,480,928	(\$3,282,222)	\$935,916,039	\$910,457,008	(\$25,459,032)	95.88%	97.27%
April 2020	\$62,886,072	\$60,121,430	(\$2,764,642)	\$998,802,111	\$970,578,438	(\$28,223,674)	95.60%	97.17%
May 2020	\$55,697,457	\$54,746,699	(\$950,758)	\$1,054,499,568	\$1,025,325,136	(\$29,174,432)	98.29%	97.23%
June 2020	\$67,221,566	\$64,003,944	(\$3,217,622)	\$1,121,721,134	\$1,089,329,080	(\$32,392,054)	95.21%	97.11%
July 2020	\$74,002,751	\$69,411,494	(\$4,591,257)	\$1,195,723,885	\$1,158,740,574	(\$36,983,311)	93.79%	96.90%
August 2020	\$75,566,505	\$70,434,770	(\$5,131,735)	\$1,271,290,390	\$1,229,175,344	(\$42,115,045)	93.20%	96.68%
September 2020	\$70,269,564	\$73,430,991	\$3,161,428	\$1,341,559,953	\$1,302,606,335	(\$38,953,618)	104.49%	97.09%
October 2020	\$73,146,265	\$75,669,274	\$2,523,009	\$1,414,706,218	\$1,378,275,609	(\$36,430,609)	103.44%	97.42%
November 2020	\$70,234,242	\$69,805,484	(\$428,758)	\$1,484,940,460	\$1,448,081,093	(\$36,859,367)	99.38%	97.51%
December 2020	\$65,836,388	\$65,012,390	(\$823,998)	\$1,550,776,848	\$1,513,093,483	(\$37,683,365)	98.74%	97.57%
January 2021	\$75,041,758	\$74,012,522	(\$1,029,237)	\$1,625,818,606	\$1,587,106,005	(\$38,712,601)	98.62%	97.61%
February 2021	\$68,836,106	\$68,915,690	\$79,583	\$1,694,654,713	\$1,656,021,695	(\$38,633,018)	100.11%	97.72%



**VALUE-ADDED SERVICES
(VAS) SUMMARY**

Value-added services are included in the MCO’s vision, dental¹, and non-vendor CDJ and encounter totals. VAS CDJ data is identified based on the activity type field of the CDJ files received from the MCO and VAS encounter data is identified based on the first two characters of the Plan ICN field.

Below is a summary of the cumulative completion percentages for all delegated vendors and non-vendor paid VAS encounters submitted to Gainwell for the reporting period of March 1, 2019 through February 28, 2021. The VAS CDJ and encounter totals in the table below are included in the entire plan, non-vendor, and delegated vendor completion percentages as well.

Table 2 — AmeriHealth Caritas Louisiana Cumulative VAS Completion Percentages					
MCO/Delegated Vendor	VAS CDJ Cumulative Reported Total	VAS Cumulative Encounter Total	VAS Cumulative Variance	VAS Cumulative Completion (%)	Adjusted^ VAS Cumulative Completion (%)
Entire Plan	\$11,136,917	\$11,885,482	\$748,565	106.72%	96.80%
Avesis Vision (Vision Services)	\$1,880,603	\$2,835,776	\$955,173	150.79%	100.00%
VSP (Vision Services)	\$2,673,818	\$2,416,211	(\$257,607)	90.36%	90.36%
Avesis Dental (Dental Services)	\$2,781,980	\$2,708,543	(\$73,437)	97.36%	97.36%
DINA Dental (Dental Services)	\$1,957,984	\$1,933,421	(\$24,563)	98.74%	98.74%
ACLA - Non-Vendor	\$1,842,532	\$1,991,530	\$148,999	108.08%	100.00%

[^] – To avoid overstating the VAS Entire Plan results in situations when the MCO or an individual vendor’s cumulative completion percentage exceeds 100 percent, we reduced such encounter totals by the period’s variance in comparison with the CDJs. Please see data analysis assumption number 9 on page 9 for further explanation.

Potential issues that may cause a significant impact on the VAS completion percentages are listed below:

1. Avesis Vision VAS has eleven months with the monthly completion percentages exceeding 100 percent. This appears to be due to either missing CDJ transactions or differing paid amounts on CDJ transactions compared to corresponding encounters. We recommend AmeriHealth Caritas Louisiana work with LDH, Avesis Vision and Gainwell to identify and resolve any VAS CDJ and/or encounter data submission issues.
2. We noted that VSP VAS has several monthly completion percentages below the 97 percent threshold and has a cumulative completion of 90.36 percent. This appears to be due to missing encounters when compared to CDJ transactions. We recommend AmeriHealth Caritas Louisiana work with LDH, VSP (Vision), and Gainwell to identify and resolve any encounter data issues.
3. AmeriHealth Caritas Louisiana’s Non-Vendor VAS has several months where the monthly completion percentages are all above the 100 percent threshold. This appears to be due to missing CDJ transactions when compared to corresponding encounters. Additionally, January and February 2021 are well below the 97 percent threshold. The total CDJ amounts for these months are negative amounts. We recommend AmeriHealth Caritas Louisiana work with LDH and Gainwell to identify and resolve any VAS CDJ and/or encounter data submission issues.



**AMERIHEALTH CARITAS LOUISIANA
CALCULATED VOID AND DUPLICATE SUMMARY**

The calculated voids (CV) and potential duplicates (PDUP) that have been identified through the encounter reconciliation analysis are indicated below. These encounters include both potential calculated voids and potential duplicates for which Myers and Stauffer LC has not received a response from the MCO, as well as encounters for which Myers and Stauffer LC has received confirmation that they are calculated voids or duplicates. These encounters have been removed from the encounter reconciliation totals.

Table 3 — AmeriHealth Caritas Louisiana Calculated Void and Duplicate Summary

Paid Month	Count of Encounters	Total Sum (MCO Submitted Paid Amounts)	Count of CV PDUP Encounters	CV PDUP Amount Removed	% of CV PDUP Encounters	% of CV PDUP Amount Removed
March 2019	963,466	\$69,362,014	1,954	\$111,447	0.20%	0.16%
April 2019	881,142	\$65,794,603	1,213	\$64,267	0.14%	0.10%
May 2019	974,969	\$65,867,498	1,067	\$51,243	0.11%	0.08%
June 2019	808,133	\$61,409,904	729	\$56,745	0.09%	0.09%
July 2019	1,003,583	\$73,384,974	1,173	\$68,663	0.12%	0.09%
August 2019	866,954	\$69,055,874	1,008	\$61,907	0.12%	0.09%
September 2019	912,042	\$72,250,740	1,121	\$75,133	0.12%	0.10%
October 2019	906,174	\$72,020,524	1,192	\$116,974	0.13%	0.16%
November 2019	919,262	\$76,549,348	1,212	\$87,379	0.13%	0.11%
December 2019	769,631	\$65,613,763	1,232	\$75,252	0.16%	0.11%
January 2020	917,319	\$73,066,231	1,855	\$107,752	0.20%	0.15%
February 2020	863,971	\$70,559,811	1,416	\$82,441	0.16%	0.12%
March 2020	899,068	\$76,572,013	1,466	\$91,085	0.16%	0.12%
April 2020	751,824	\$60,197,746	923	\$76,316	0.12%	0.13%
May 2020	669,600	\$54,761,422	316	\$14,724	0.05%	0.03%
June 2020	806,476	\$64,025,645	552	\$21,702	0.07%	0.03%
July 2020	1,125,843	\$69,455,002	758	\$43,508	0.07%	0.06%
August 2020	1,086,671	\$70,492,839	1,098	\$58,069	0.10%	0.08%
September 2020	847,891	\$73,466,191	680	\$35,200	0.08%	0.05%
October 2020	1,277,916	\$75,726,202	964	\$56,928	0.08%	0.08%
November 2020	858,937	\$69,863,913	847	\$58,429	0.10%	0.08%
December 2020	750,273	\$65,047,773	532	\$35,383	0.07%	0.05%
January 2021	804,775	\$74,051,711	523	\$39,190	0.06%	0.05%
February 2021	752,299	\$68,974,704	714	\$59,014	0.09%	0.09%
TOTALS	21,418,219	\$1,657,570,445	24,545	\$1,548,751	0.11%	0.09%

- **Count of Encounters** – The number of encounters processed by the FAC (excluding encounters marked as denied by the FAC).
- **Total Sum (MCO Submitted Paid Amounts)** – The total paid amounts in a month per the encounter data provided by the FAC. These amounts do not incorporate the corrections to paid amounts as explained in #4 of the Data Analysis Assumptions on page 9 of this report.
- **Count of CV PDUP Encounters** – The number of encounters identified by Myers and Stauffer LC as potential calculated voids and duplicates as well as calculated voids and duplicates confirmed by the MCO.
- **CV PDUP Amount Removed** – The paid amount removed from the Monthly Encounter Total based on Myers and Stauffer LC’s analysis of calculated voids and duplicates.
- **% of CV PDUP Encounters** – The percentage of calculated voids and duplicates out of the total number of encounters.
- **% of CV PDUP Amount Removed** – The percentage of paid amount removed from the total MCO submitted paid amount.



Summary Reporting Charts

Chart 1. AmeriHealth Caritas Louisiana’s CDJ totals and encounter totals as reported monthly.

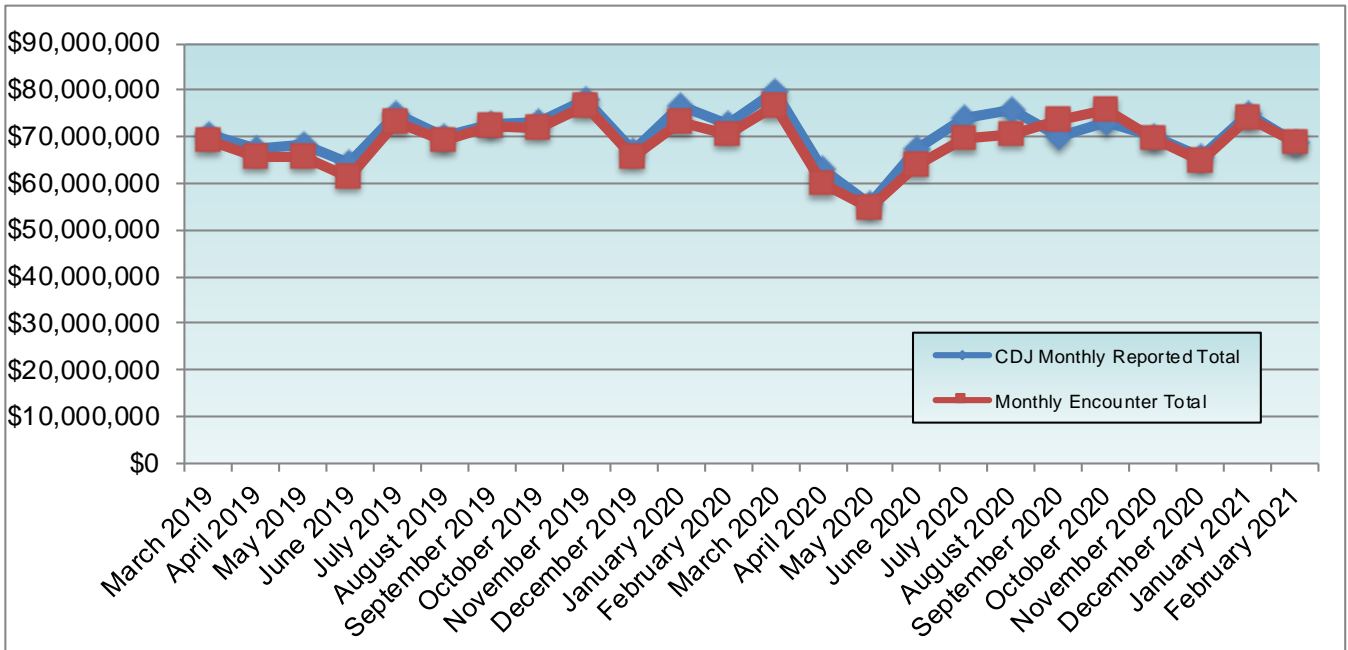
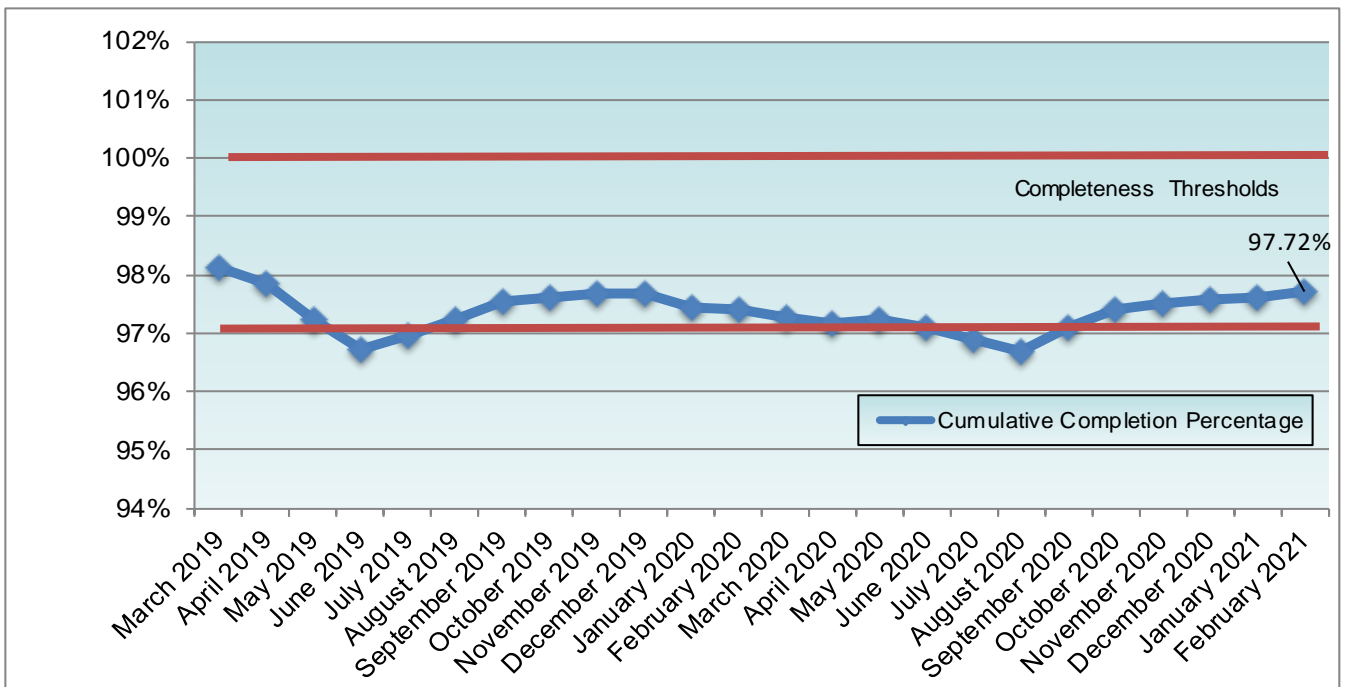


Chart 2. AmeriHealth Caritas Louisiana’s cumulative encounter submissions expressed as a percentage of payments submitted to the FAC to reported MCO CDJ payments.



LA MCO Encounter and CDJ Comparison

Reported AmeriHealth Caritas Louisiana delegated vendors include, or have included, Southeastrans (Non-Emergency Transportation), ModivCare (Non-Emergency Transportation), VSP (Vision), DINA Dental (Dental), Avesis Vision (Vision), Avesis Dental (Dental) and PerformRx (Pharmacy).

AMERIHEALTH CARITAS LOUISIANA – SOUTHEASTRANS (NET)

AmeriHealth Caritas Louisiana appears to have submitted approximately 98 percent of the Southeastrans non-emergency transportation encounter data for this period, with a cumulative monthly range between 98 percent and 100 percent. Monthly percentages exceeded 100 percent during some months of the reporting period. Please reference potential data issue number 1 on page 10 for an explanation of the possible causes.

Table 4 — AmeriHealth Caritas Louisiana Southeastrans (Non-Emergency Transportation)

Paid Month	CDJ Monthly Reported Total	Monthly Encounter Total	Monthly Variance	CDJ Cumulative Reported Total	Cumulative Encounter Total	Cumulative Variance	Monthly Completion Percentage	Cumulative Completion Percentage
March 2019	\$700,982	\$697,889	(\$3,094)	\$700,982	\$697,889	(\$3,094)	99.55%	99.55%
April 2019	\$613,382	\$621,118	\$7,736	\$1,314,364	\$1,319,007	\$4,643	101.26%	100.35%
May 2019	\$649,716	\$651,540	\$1,824	\$1,964,080	\$1,970,547	\$6,467	100.28%	100.32%
June 2019	\$469,389	\$453,478	(\$15,911)	\$2,433,470	\$2,424,026	(\$9,444)	96.61%	99.61%
July 2019	\$654,908	\$650,963	(\$3,944)	\$3,088,377	\$3,074,989	(\$13,388)	99.39%	99.56%
August 2019	\$1,144,693	\$1,147,373	\$2,680	\$4,233,070	\$4,222,362	(\$10,709)	100.23%	99.74%
September 2019	\$756,078	\$756,492	\$414	\$4,989,148	\$4,978,854	(\$10,295)	100.05%	99.79%
October 2019	\$671,143	\$669,846	(\$1,297)	\$5,660,291	\$5,648,699	(\$11,592)	99.80%	99.79%
November 2019	\$898,744	\$896,343	(\$2,401)	\$6,559,035	\$6,545,042	(\$13,992)	99.73%	99.78%
December 2019	\$566,365	\$541,230	(\$25,134)	\$7,125,399	\$7,086,272	(\$39,127)	95.56%	99.45%
January 2020	\$698,928	\$697,869	(\$1,059)	\$7,824,327	\$7,784,141	(\$40,186)	99.84%	99.48%
February 2020	\$582,179	\$581,813	(\$366)	\$8,406,506	\$8,365,954	(\$40,552)	99.93%	99.51%
March 2020	\$591,838	\$591,984	\$146	\$8,998,344	\$8,957,938	(\$40,406)	100.02%	99.55%
April 2020	\$669,304	\$666,009	(\$3,295)	\$9,667,649	\$9,623,948	(\$43,701)	99.50%	99.54%
May 2020	\$524,637	\$522,439	(\$2,198)	\$10,192,285	\$10,146,386	(\$45,899)	99.58%	99.54%
June 2020	\$518,297	\$515,047	(\$3,251)	\$10,710,582	\$10,661,433	(\$49,150)	99.37%	99.54%
July 2020	\$627,725	\$579,813	(\$47,912)	\$11,338,308	\$11,241,246	(\$97,062)	92.36%	99.14%
August 2020	\$553,442	\$457,527	(\$95,915)	\$11,891,750	\$11,698,773	(\$192,976)	82.66%	98.37%
September 2020	\$609,528	\$733,082	\$123,555	\$12,501,277	\$12,431,856	(\$69,422)	120.27%	99.44%
October 2020	\$727,857	\$704,930	(\$22,926)	\$13,229,134	\$13,136,786	(\$92,348)	96.85%	99.30%
November 2020	\$609,184	\$605,215	(\$3,969)	\$13,838,318	\$13,742,001	(\$96,317)	99.34%	99.30%
December 2020	\$527,301	\$527,330	\$29	\$14,365,619	\$14,269,331	(\$96,288)	100.00%	99.32%
January 2021	\$749,978	\$679,935	(\$70,044)	\$15,115,597	\$14,949,265	(\$166,332)	90.66%	98.89%
February 2021	\$617,560	\$601,909	(\$15,651)	\$15,733,157	\$15,551,174	(\$181,983)	97.46%	98.84%

AMERIHEALTH CARITAS LOUISIANA – MODIVCARE (NET)

AmeriHealth Caritas Louisiana appears to have submitted approximately 99 percent of the ModivCare non-emergency transportation encounter data for this period, with a cumulative monthly range between 98 percent and 100 percent.

Table 5 — AmeriHealth Caritas Louisiana ModivCare (Non-Emergency Transportation)

Paid Month	CDJ Monthly Reported Total	Monthly Encounter Total	Monthly Variance	CDJ Cumulative Reported Total	Cumulative Encounter Total	Cumulative Variance	Monthly Completion Percentage	Cumulative Completion Percentage
March 2019	\$280	\$280	\$0	\$280	\$280	\$0	100.00%	100.00%
April 2019	\$85	\$85	\$0	\$365	\$365	\$0	100.00%	100.00%
May 2019	\$5,836	\$5,760	(\$76)	\$6,201	\$6,125	(\$76)	98.69%	98.77%
June 2019	\$0	\$0	\$0	\$6,201	\$6,125	(\$76)		98.77%
July 2019	\$0	\$0	\$0	\$6,201	\$6,125	(\$76)		98.77%
August 2019	\$0	\$21	\$21	\$6,201	\$6,147	(\$55)		99.12%
September 2019	\$65	\$65	\$0	\$6,266	\$6,211	(\$55)	100.00%	99.12%
October 2019	\$0	\$0	\$0	\$6,266	\$6,211	(\$55)		99.12%
November 2019	\$0	\$0	\$0	\$6,266	\$6,211	(\$55)		99.12%
December 2019	\$0	\$0	\$0	\$6,266	\$6,211	(\$55)		99.12%
January 2020	\$0	\$0	\$0	\$6,266	\$6,211	(\$55)		99.12%
February 2020	\$29	\$29	\$0	\$6,295	\$6,241	(\$55)	100.00%	99.13%
March 2020	\$0	\$0	\$0	\$6,295	\$6,241	(\$55)		99.13%
April 2020	\$0	\$0	\$0	\$6,295	\$6,241	(\$55)		99.13%
May 2020	\$0	\$0	\$0	\$6,295	\$6,241	(\$55)		99.13%
June 2020	\$0	\$0	\$0	\$6,295	\$6,241	(\$55)		99.13%
July 2020	\$0	\$0	\$0	\$6,295	\$6,241	(\$55)		99.13%
August 2020	\$0	\$0	\$0	\$6,295	\$6,241	(\$55)		99.13%
September 2020	\$0	\$0	\$0	\$6,295	\$6,241	(\$55)		99.13%
October 2020	\$0	\$0	\$0	\$6,295	\$6,241	(\$55)		99.13%
November 2020	\$0	\$0	\$0	\$6,295	\$6,241	(\$55)		99.13%
December 2020	\$0	\$0	\$0	\$6,295	\$6,241	(\$55)		99.13%
January 2021	\$0	\$0	\$0	\$6,295	\$6,241	(\$55)		99.13%
February 2021	\$0	\$0	\$0	\$6,295	\$6,241	(\$55)		99.13%

AMERIHEALTH CARITAS LOUISIANA – AVESIS VISION (VISION SERVICES)

AmeriHealth Caritas Louisiana appears to have submitted approximately 99 percent of the Avesis Vision encounter data for this period, with a cumulative monthly range between 71 percent and 99 percent. Monthly percentages exceeded 100 percent during some months of the reporting period. Please reference potential data issue number 1 on page 10 for an explanation of the possible causes.

Table 6 — AmeriHealth Caritas Louisiana Avesis Vision (Vision)

Paid Month	CDJ Monthly Reported Total	Monthly Encounter Total	Monthly Variance	CDJ Cumulative Reported Total	Cumulative Encounter Total	Cumulative Variance	Monthly Completion Percentage	Cumulative Completion Percentage
January 2020	\$49,671	\$35,439	(\$14,232)	\$49,671	\$35,439	(\$14,232)	71.34%	71.34%
February 2020	\$257,920	\$230,832	(\$27,088)	\$307,591	\$266,271	(\$41,320)	89.49%	86.56%
March 2020	\$431,392	\$359,475	(\$71,918)	\$738,984	\$625,746	(\$113,238)	83.32%	84.67%
April 2020	\$273,038	\$188,422	(\$84,616)	\$1,012,022	\$814,168	(\$197,854)	69.00%	80.44%
May 2020	\$208,714	\$186,445	(\$22,269)	\$1,220,736	\$1,000,613	(\$220,123)	89.33%	81.96%
June 2020	\$479,828	\$441,135	(\$38,693)	\$1,700,564	\$1,441,748	(\$258,816)	91.93%	84.78%
July 2020	\$601,062	\$556,365	(\$44,696)	\$2,301,626	\$1,998,114	(\$303,512)	92.56%	86.81%
August 2020	\$550,572	\$516,715	(\$33,857)	\$2,852,197	\$2,514,828	(\$337,369)	93.85%	88.17%
September 2020	\$563,207	\$651,549	\$88,342	\$3,415,404	\$3,166,377	(\$249,027)	115.68%	92.70%
October 2020	\$563,637	\$557,742	(\$5,894)	\$3,979,041	\$3,724,120	(\$254,921)	98.95%	93.59%
November 2020	\$472,768	\$466,617	(\$6,151)	\$4,451,808	\$4,190,736	(\$261,072)	98.69%	94.13%
December 2020	\$542,867	\$557,265	\$14,397	\$4,994,676	\$4,748,001	(\$246,675)	102.65%	95.06%
January 2021	\$439,119	\$564,511	\$125,392	\$5,433,795	\$5,312,512	(\$121,283)	128.55%	97.76%
February 2021	\$581,288	\$646,125	\$64,837	\$6,015,083	\$5,958,637	(\$56,446)	111.15%	99.06%

AMERIHEALTH CARITAS LOUISIANA – VSP (VISION SERVICES)

AmeriHealth Caritas Louisiana appears to have submitted approximately 98 percent of the VSP vision encounter data for this period. Monthly percentages exceeded 100 percent during a few months of the reporting period. Please reference potential data issue number 1 on page 10 for an explanation of the possible causes.

Table 7 — AmeriHealth Caritas Louisiana VSP (Vision)

Paid Month	CDJ Monthly Reported Total	Monthly Encounter Total	Monthly Variance	CDJ Cumulative Reported Total	Cumulative Encounter Total	Cumulative Variance	Monthly Completion Percentage	Cumulative Completion Percentage
March 2019	\$545,956	\$537,975	(\$7,981)	\$545,956	\$537,975	(\$7,981)	98.53%	98.53%
April 2019	\$577,783	\$567,065	(\$10,718)	\$1,123,739	\$1,105,040	(\$18,698)	98.14%	98.33%
May 2019	\$436,031	\$423,572	(\$12,458)	\$1,559,769	\$1,528,613	(\$31,156)	97.14%	98.00%
June 2019	\$420,868	\$416,758	(\$4,111)	\$1,980,637	\$1,945,370	(\$35,267)	99.02%	98.21%
July 2019	\$467,094	\$458,207	(\$8,887)	\$2,447,731	\$2,403,577	(\$44,154)	98.09%	98.19%
August 2019	\$559,959	\$552,954	(\$7,005)	\$3,007,690	\$2,956,531	(\$51,159)	98.74%	98.29%
September 2019	\$545,769	\$539,546	(\$6,222)	\$3,553,459	\$3,496,078	(\$57,381)	98.85%	98.38%
October 2019	\$523,672	\$516,539	(\$7,133)	\$4,077,131	\$4,012,617	(\$64,514)	98.63%	98.41%
November 2019	\$467,559	\$456,728	(\$10,832)	\$4,544,690	\$4,469,345	(\$75,346)	97.68%	98.34%
December 2019	\$382,872	\$377,447	(\$5,425)	\$4,927,562	\$4,846,792	(\$80,770)	98.58%	98.36%
January 2020	\$119,458	\$116,016	(\$3,442)	\$5,047,020	\$4,962,808	(\$84,212)	97.11%	98.33%
February 2020	\$19,748	\$18,682	(\$1,066)	\$5,066,768	\$4,981,490	(\$85,278)	94.60%	98.31%
March 2020	\$6,577	\$6,409	(\$168)	\$5,073,345	\$4,987,899	(\$85,446)	97.45%	98.31%
April 2020	\$14,576	\$12,538	(\$2,037)	\$5,087,921	\$5,000,437	(\$87,483)	86.02%	98.28%
May 2020	\$2,482	\$2,316	(\$167)	\$5,090,403	\$5,002,753	(\$87,650)	93.28%	98.27%
June 2020	\$1,884	\$1,387	(\$497)	\$5,092,287	\$5,004,140	(\$88,147)	73.61%	98.26%
July 2020	\$428	\$303	(\$126)	\$5,092,715	\$5,004,443	(\$88,273)	70.64%	98.26%
August 2020	\$151	\$63	(\$88)	\$5,092,867	\$5,004,506	(\$88,361)	41.70%	98.26%
September 2020	\$122	\$171	\$49	\$5,092,989	\$5,004,677	(\$88,312)	140.20%	98.26%
October 2020	\$560	\$560	\$0	\$5,093,548	\$5,005,236	(\$88,312)	100.00%	98.26%
November 2020	\$441	\$498	\$57	\$5,093,989	\$5,005,735	(\$88,255)	112.90%	98.26%
December 2020	\$913	\$43	(\$870)	\$5,094,903	\$5,005,778	(\$89,125)	4.73%	98.25%
January 2021	\$0	\$0	\$0	\$5,094,903	\$5,005,778	(\$89,125)		98.25%
February 2021	\$0	\$0	\$0	\$5,094,903	\$5,005,778	(\$89,125)		98.25%

AMERIHEALTH CARITAS LOUISIANA – AVESIS DENTAL (DENTAL SERVICES)

AmeriHealth Caritas Louisiana appears to have submitted approximately 97 percent of the Avesis Dental encounter data for this period, with a cumulative monthly range between 83 percent and 97 percent. Monthly percentages exceeded 100 percent during some months of the reporting period. Please reference potential data issue number 1 on page 10 for an explanation of the possible causes.

Please reference potential data issue 2 on page 10 for details on what may be significantly impacting the completion percentages.

Table 8 — AmeriHealth Caritas Louisiana Avesis Dental (Dental)

Paid Month	CDJ Monthly Reported Total	Monthly Encounter Total	Monthly Variance	CDJ Cumulative Reported Total	Cumulative Encounter Total	Cumulative Variance	Monthly Completion Percentage	Cumulative Completion Percentage
January 2020	\$70,161	\$64,893	(\$5,268)	\$70,161	\$64,893	(\$5,268)	92.49%	92.49%
February 2020	\$167,985	\$143,108	(\$24,877)	\$238,146	\$208,001	(\$30,145)	85.19%	87.34%
March 2020	\$195,570	\$162,993	(\$32,577)	\$433,716	\$370,994	(\$62,722)	83.34%	85.53%
April 2020	\$77,578	\$60,865	(\$16,714)	\$511,294	\$431,859	(\$79,436)	78.45%	84.46%
May 2020	\$132,965	\$108,556	(\$24,408)	\$644,259	\$540,415	(\$103,844)	81.64%	83.88%
June 2020	\$195,514	\$164,284	(\$31,230)	\$839,773	\$704,699	(\$135,074)	84.02%	83.91%
July 2020	\$247,363	\$206,131	(\$41,232)	\$1,087,136	\$910,830	(\$176,306)	83.33%	83.78%
August 2020	\$233,933	\$192,576	(\$41,357)	\$1,321,069	\$1,103,406	(\$217,663)	82.32%	83.52%
September 2020	\$234,958	\$281,188	\$46,230	\$1,556,027	\$1,384,594	(\$171,433)	119.67%	88.98%
October 2020	\$276,429	\$302,403	\$25,974	\$1,832,455	\$1,686,997	(\$145,458)	109.39%	92.06%
November 2020	\$205,121	\$216,021	\$10,900	\$2,037,576	\$1,903,018	(\$134,558)	105.31%	93.39%
December 2020	\$234,373	\$247,948	\$13,576	\$2,271,949	\$2,150,966	(\$120,982)	105.79%	94.67%
January 2021	\$217,733	\$225,436	\$7,703	\$2,489,682	\$2,376,402	(\$113,280)	103.53%	95.45%
February 2021	\$292,298	\$332,251	\$39,953	\$2,781,980	\$2,708,653	(\$73,327)	113.66%	97.36%

* Since all dental services are value-added services, the cumulative totals above should reflect the same totals as in the value-added services summary (see Value-Added Services Summary on page 12)

AMERIHEALTH CARITAS LOUISIANA – DINA DENTAL (DENTAL SERVICES)

AmeriHealth Caritas Louisiana appears to have submitted approximately 99 percent of the DINA Dental encounter data for this period, with a cumulative monthly range between 98 percent and 99 percent. Monthly percentages exceeded 100 percent during a few months of the reporting period. Please reference potential data issue number 1 on page 10 for an explanation of the possible causes.

Please reference potential data issue 3 on page 10 for details on what may be significantly impacting the completion percentages.

Table 9 — AmeriHealth Caritas Louisiana DINA Dental (Dental)

Paid Month	CDJ Monthly Reported Total	Monthly Encounter Total	Monthly Variance	CDJ Cumulative Reported Total	Cumulative Encounter Total	Cumulative Variance	Monthly Completion Percentage	Cumulative Completion Percentage
March 2019	\$159,032	\$158,346	(\$686)	\$159,032	\$158,346	(\$686)	99.56%	99.56%
April 2019	\$178,490	\$178,440	(\$50)	\$337,522	\$336,786	(\$736)	99.97%	99.78%
May 2019	\$183,895	\$184,306	\$412	\$521,417	\$521,092	(\$325)	100.22%	99.93%
June 2019	\$169,185	\$161,780	(\$7,405)	\$690,602	\$682,872	(\$7,729)	95.62%	98.88%
July 2019	\$164,536	\$162,589	(\$1,947)	\$855,138	\$845,461	(\$9,677)	98.81%	98.86%
August 2019	\$196,325	\$198,681	\$2,357	\$1,051,462	\$1,044,142	(\$7,320)	101.20%	99.30%
September 2019	\$166,218	\$161,432	(\$4,786)	\$1,217,680	\$1,205,574	(\$12,106)	97.12%	99.00%
October 2019	\$187,208	\$184,482	(\$2,727)	\$1,404,888	\$1,390,056	(\$14,833)	98.54%	98.94%
November 2019	\$175,096	\$173,690	(\$1,407)	\$1,579,985	\$1,563,745	(\$16,239)	99.19%	98.97%
December 2019	\$181,399	\$180,599	(\$800)	\$1,761,384	\$1,744,345	(\$17,040)	99.55%	99.03%
January 2020	\$121,230	\$119,740	(\$1,490)	\$1,882,614	\$1,864,084	(\$18,530)	98.77%	99.01%
February 2020	\$28,426	\$28,336	(\$90)	\$1,911,040	\$1,892,420	(\$18,620)	99.68%	99.02%
March 2020	\$32,443	\$32,079	(\$364)	\$1,943,483	\$1,924,499	(\$18,984)	98.87%	99.02%
April 2020	\$6,509	\$6,509	\$0	\$1,949,991	\$1,931,007	(\$18,984)	100.00%	99.02%
May 2020	\$7,496	\$12	(\$7,484)	\$1,957,487	\$1,931,019	(\$26,468)	0.16%	98.64%
June 2020	\$432	\$2,179	\$1,747	\$1,957,919	\$1,933,198	(\$24,721)	504.48%	98.73%
July 2020	\$0	\$0	\$0	\$1,957,919	\$1,933,198	(\$24,721)		98.73%
August 2020	\$0	\$0	\$0	\$1,957,919	\$1,933,198	(\$24,721)		98.73%
September 2020	\$65	\$65	\$0	\$1,957,984	\$1,933,263	(\$24,721)	100.00%	98.73%
October 2020	\$0	\$158	\$158	\$1,957,984	\$1,933,421	(\$24,563)		98.74%
November 2020	\$0	\$0	\$0	\$1,957,984	\$1,933,421	(\$24,563)		98.74%
December 2020	\$0	\$0	\$0	\$1,957,984	\$1,933,421	(\$24,563)		98.74%
January 2021	\$0	\$0	\$0	\$1,957,984	\$1,933,421	(\$24,563)		98.74%
February 2021	\$0	\$0	\$0	\$1,957,984	\$1,933,421	(\$24,563)		98.74%

* Since all dental services are value-added services, the cumulative totals above should reflect the same totals as in the value-added services summary (see Value-Added Services Summary on page 12).

AMERIHEALTH CARITAS LOUISIANA – PERFORMRx (PHARMACY BENEFITS)

AmeriHealth Caritas Louisiana appears to have submitted approximately 98 percent of the PerformRx pharmacy benefit encounter data for this period, with a cumulative monthly range between 96 percent and 99 percent. Monthly percentages exceeded 100 percent during some months of the reporting period. Please reference potential data issue number 1 on page 10 for an explanation of the possible causes.

Please reference potential data issue 1 on page 10 for details on what may be significantly impacting the completion percentages.

Table 11 — AmeriHealth Caritas Louisiana PerformRx (Pharmacy Benefits)

Paid Month	CDJ Monthly Reported Total	Monthly Encounter Total	Monthly Variance	CDJ Cumulative Reported Total	Cumulative Encounter Total	Cumulative Variance	Monthly Completion Percentage	Cumulative Completion Percentage
March 2019	\$19,425,071	\$19,207,934	(\$217,137)	\$19,425,071	\$19,207,934	(\$217,137)	98.88%	98.88%
April 2019	\$15,409,556	\$15,273,701	(\$135,855)	\$34,834,626	\$34,481,635	(\$352,992)	99.11%	98.98%
May 2019	\$19,876,913	\$18,727,709	(\$1,149,204)	\$54,711,539	\$53,209,344	(\$1,502,196)	94.21%	97.25%
June 2019	\$16,757,568	\$15,518,502	(\$1,239,066)	\$71,469,107	\$68,727,846	(\$2,741,262)	92.60%	96.16%
July 2019	\$17,595,295	\$16,901,904	(\$693,390)	\$89,064,402	\$85,629,750	(\$3,434,652)	96.05%	96.14%
August 2019	\$23,176,986	\$23,337,055	\$160,068	\$112,241,388	\$108,966,804	(\$3,274,584)	100.69%	97.08%
September 2019	\$19,550,893	\$20,809,973	\$1,259,079	\$131,792,281	\$129,776,777	(\$2,015,504)	106.44%	98.47%
October 2019	\$20,028,146	\$19,922,849	(\$105,297)	\$151,820,427	\$149,699,626	(\$2,120,801)	99.47%	98.60%
November 2019	\$23,943,607	\$24,079,524	\$135,917	\$175,764,034	\$173,779,151	(\$1,984,883)	100.56%	98.87%
December 2019	\$19,353,008	\$19,480,798	\$127,790	\$195,117,042	\$193,259,949	(\$1,857,093)	100.66%	99.04%
January 2020	\$25,067,512	\$23,895,180	(\$1,172,333)	\$220,184,554	\$217,155,128	(\$3,029,426)	95.32%	98.62%
February 2020	\$20,580,484	\$20,536,222	(\$44,262)	\$240,765,039	\$237,691,351	(\$3,073,688)	99.78%	98.72%
March 2020	\$21,644,553	\$21,261,397	(\$383,156)	\$262,409,592	\$258,952,748	(\$3,456,844)	98.22%	98.68%
April 2020	\$19,728,042	\$19,284,935	(\$443,107)	\$282,137,634	\$278,237,683	(\$3,899,951)	97.75%	98.61%
May 2020	\$23,495,666	\$23,366,138	(\$129,528)	\$305,633,300	\$301,603,821	(\$4,029,478)	99.44%	98.68%
June 2020	\$19,068,558	\$18,443,325	(\$625,233)	\$324,701,857	\$320,047,146	(\$4,654,711)	96.72%	98.56%
July 2020	\$24,626,627	\$23,774,559	(\$852,068)	\$349,328,484	\$343,821,705	(\$5,506,780)	96.54%	98.42%
August 2020	\$20,421,467	\$17,849,201	(\$2,572,266)	\$369,749,951	\$361,670,906	(\$8,079,046)	87.40%	97.81%
September 2020	\$20,553,734	\$20,780,566	\$226,832	\$390,303,685	\$382,451,472	(\$7,852,213)	101.10%	97.98%
October 2020	\$24,773,951	\$27,329,124	\$2,555,173	\$415,077,636	\$409,780,595	(\$5,297,041)	110.31%	98.72%
November 2020	\$20,137,669	\$20,642,636	\$504,967	\$435,215,305	\$430,423,231	(\$4,792,074)	102.50%	98.89%
December 2020	\$20,184,327	\$19,932,050	(\$252,276)	\$455,399,632	\$450,355,282	(\$5,044,350)	98.75%	98.89%
January 2021	\$26,220,948	\$25,439,434	(\$781,515)	\$481,620,580	\$475,794,715	(\$5,825,865)	97.01%	98.79%
February 2021	\$20,718,500	\$20,542,216	(\$176,284)	\$502,339,081	\$496,336,932	(\$6,002,149)	99.14%	98.80%

AMERIHEALTH CARITAS LOUISIANA – NON-VENDOR

AmeriHealth Caritas Louisiana appears to have submitted approximately 97 percent of the AmeriHealth Caritas Louisiana Non-Vendor encounter data for this period, with a cumulative monthly range between 96 percent and 97 percent. Monthly percentages exceeded 100 percent during a few months of the reporting period. Please reference potential data issue number 1 on page 10 for an explanation of the possible causes.

Please reference potential data issue 4 on page 10 for details on what may be significantly impacting the completion percentages.

Table 12 — AmeriHealth Caritas Louisiana Non-Vendor

Paid Month	CDJ Monthly Reported Total	Monthly Encounter Total	Monthly Variance	CDJ Cumulative Reported Total	Cumulative Encounter Total	Cumulative Variance	Monthly Completion Percentage	Cumulative Completion Percentage
March 2019	\$49,745,028	\$48,648,143	(\$1,096,885)	\$49,745,028	\$48,648,143	(\$1,096,885)	97.79%	97.79%
April 2019	\$50,600,987	\$49,089,927	(\$1,511,059)	\$100,346,015	\$97,738,070	(\$2,607,944)	97.01%	97.40%
May 2019	\$47,359,448	\$45,823,367	(\$1,536,081)	\$147,705,463	\$143,561,437	(\$4,144,025)	96.75%	97.19%
June 2019	\$46,697,430	\$44,802,640	(\$1,894,790)	\$194,402,893	\$188,364,078	(\$6,038,815)	95.94%	96.89%
July 2019	\$56,106,276	\$55,142,647	(\$963,629)	\$250,509,169	\$243,506,725	(\$7,002,444)	98.28%	97.20%
August 2019	\$44,876,755	\$43,757,883	(\$1,118,872)	\$295,385,924	\$287,264,608	(\$8,121,316)	97.50%	97.25%
September 2019	\$51,658,418	\$49,908,099	(\$1,750,319)	\$347,044,342	\$337,172,707	(\$9,871,635)	96.61%	97.15%
October 2019	\$51,871,192	\$50,609,835	(\$1,261,357)	\$398,915,535	\$387,782,542	(\$11,132,992)	97.56%	97.20%
November 2019	\$52,443,324	\$50,855,684	(\$1,587,640)	\$451,358,858	\$438,638,226	(\$12,720,632)	96.97%	97.18%
December 2019	\$46,508,044	\$44,958,436	(\$1,549,608)	\$497,866,902	\$483,596,662	(\$14,270,240)	96.66%	97.13%
January 2020	\$50,494,784	\$48,029,343	(\$2,465,442)	\$548,361,686	\$531,626,005	(\$16,735,681)	95.11%	96.94%
February 2020	\$51,089,818	\$48,938,347	(\$2,151,471)	\$599,451,504	\$580,564,352	(\$18,887,153)	95.78%	96.84%
March 2020	\$56,860,777	\$54,066,591	(\$2,794,186)	\$656,312,281	\$634,630,943	(\$21,681,338)	95.08%	96.69%
April 2020	\$42,117,025	\$39,902,152	(\$2,214,872)	\$698,429,306	\$674,533,095	(\$23,896,211)	94.74%	96.57%
May 2020	\$31,325,497	\$30,560,793	(\$764,704)	\$729,754,803	\$705,093,888	(\$24,660,915)	97.55%	96.62%
June 2020	\$46,957,052	\$44,436,587	(\$2,520,465)	\$776,711,855	\$749,530,475	(\$27,181,380)	94.63%	96.50%
July 2020	\$47,899,546	\$44,294,323	(\$3,605,223)	\$824,611,401	\$793,824,798	(\$30,786,603)	92.47%	96.26%
August 2020	\$53,806,940	\$51,418,687	(\$2,388,253)	\$878,418,341	\$845,243,485	(\$33,174,856)	95.56%	96.22%
September 2020	\$48,307,951	\$50,984,371	\$2,676,419	\$926,726,292	\$896,227,856	(\$30,498,436)	105.54%	96.70%
October 2020	\$46,803,832	\$46,774,356	(\$29,476)	\$973,530,125	\$943,002,213	(\$30,527,912)	99.93%	96.86%
November 2020	\$48,809,059	\$47,874,497	(\$934,562)	\$1,022,339,184	\$990,876,710	(\$31,462,474)	98.08%	96.92%
December 2020	\$44,346,608	\$43,747,754	(\$598,854)	\$1,066,685,791	\$1,034,624,464	(\$32,061,328)	98.64%	96.99%
January 2021	\$47,413,979	\$47,103,207	(\$310,772)	\$1,114,099,770	\$1,081,727,671	(\$32,372,100)	99.34%	97.09%
February 2021	\$46,626,460	\$46,793,188	\$166,728	\$1,160,726,231	\$1,128,520,859	(\$32,205,371)	100.35%	97.22%