



# Louisiana Coordinated System of Care (CSoC)

## Director's Report to the Governance Board

8/24/2022

# Highlights and News

- The new CSoC Waiver application was successfully submitted and approved, effective 07/01/2022.
- Office of Behavioral Health (OBH) Assistant Secretary Karen Stubbs along with Magellan's CSoC VP Syralja Griffin will join as keynote speakers at the upcoming Transformational Collaborative Outcomes Management (TCOM) Conference in New Orleans this September.
- Magellan's quality team will partner alongside Choices to present a session: "Born on the Bayou: Best Practices for Utilizing the CANS in Youth Assessments" at the TCOM Conference in September.
- The OBH CSoC Director and staff from Magellan and Eckerd will join in Region 5 to meet with a local judge about CSoC services this month.

## Highlights and News

- The Wraparound Agencies (WAAs) and Family Support Organization (FSO) continue increasing face-to-face contact with families while continuing with Centers for Disease Control and Prevention (CDC) safety precautions. Agencies are utilizing telehealth when requested by families.
- The Families First Coronavirus Response Act (FFCRA) changes to CSoC disenrollment criteria remain in place, however Medicaid and OBH continue to assist the agencies with disenrollment of identified members who meet full Medicaid benefit eligibility outside of CSoC and meet specific CSoC discharge criteria pre-COVID19.
- Magellan continues to take direct referrals to CSoC and the results continue to make a positive impact on the program.
- Outcomes overall remain positive.

# CSoC Enrollment (Enrolled + Presumptive)

Act 1225 Region	6/25/21	10/01/21	12/31/21	4/1/22	7/1/22
1 (Jefferson Parish/New Orleans area)	338	295	294	306	289
2 (Capital area)	282	268	282	286	270
3 (Covington area)	263	249	227	225	224
4 (Thibodaux area)	251	233	227	246	234
5 (Acadiana area)	254	238	261	277	282
6 (Lake Charles area)	136	124	141	137	124
7 (Alexandria area)	165	137	157	177	182
8 (Shreveport area)	184	161	162	174	135
9 (Monroe area)	396	395	414	410	341
<b>TOTAL</b>	<b>2,269</b>	<b>2,100</b>	<b>2,165</b>	<b>2,238</b>	<b>2,081</b>

# Member Referrals

Act 1225 Region	10/1/21	12/31/21	4/1/22	7/1/22
1 (Jefferson Parish/New Orleans area)	24	44	65	66
2 (Capital area)	57	82	94	87
3 (Covington area)	68	93	100	88
4 (Thibodaux area)	47	51	69	64
5 (Acadiana area)	72	107	79	84
6 (Lake Charles area)	19	46	29	34
7 (Alexandria area)	31	42	70	48
8 (Shreveport area)	31	28	70	44
9 (Monroe area)	72	113	127	88
<b>TOTAL</b>	<b>421</b>	<b>606</b>	<b>703</b>	<b>603</b>

# Referrals by Agency/Entity

Referring Source	4/1/22	7/1/22	Change
Caregiver	6,009	6,207	198
Licensed Mental Health Professional	4,326	4,384	58
Other	4,076	4,210	134
DCFS	2,322	2,387	65
LDOE/School	2,428	2,461	33
OJJ	1,856	1,889	33
Other Juvenile Entities	1,004	1,007	3
Hospitals	1,832	1,886	54
Self or Legal Guardian	1,152	1,154	2
Primary Care Physician (PCP)	244	265	21
OBH	214	216	2
<b>Total</b>	<b>25,463</b>	<b>26,066</b>	<b>603</b>

# Gender

Gender	Number of Children Enrolled in CSoC on Last Day of the Reporting Period	Percent of Total Enrollment by Gender
Female	855	43%
Male	1,128	57%
Unspecified	0	0%
<b>TOTAL</b>	<b>1,983</b>	<b>100%</b>

# Race

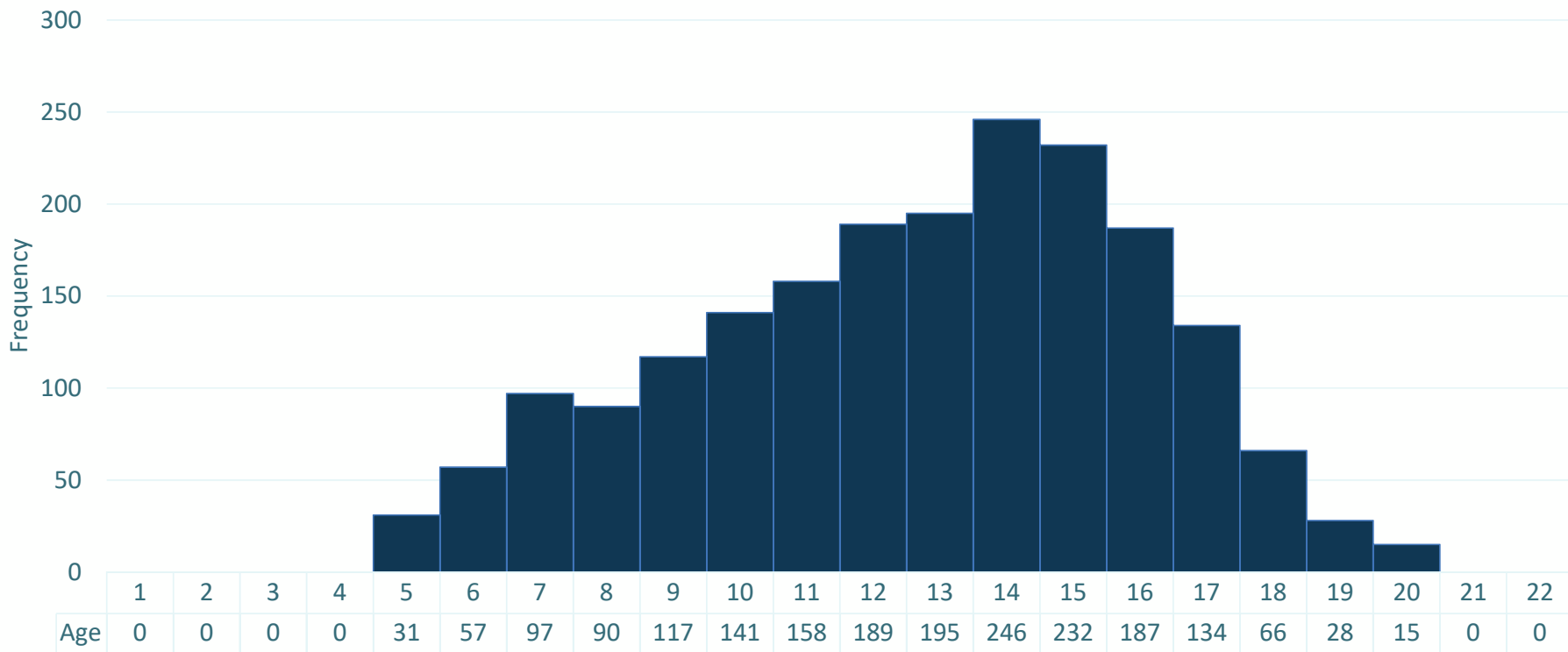
Race	Number of Children Enrolled in CSoC on Last Day of the Reporting Period	Percent of Total Enrollment by Race
Black/African American	1,031	52%
White	821	41%
American Indian/Alaskan Native	15	1%
Multi-Racial	72	4%
Other/Single Race	31	2%
Asian	3	<1%
Native Hawaiian/Other Pacific Islander	6	<1%
Unknown	4	<1%
<b>Total</b>	<b>1,983</b>	<b>100%</b>



# Ethnicity

Ethnicity	Number of Children Enrolled in CSoC on Last Day of the Reporting Period	Percent of Total Enrollment by Ethnicity
Non-Hispanic/Non-Latino	1,926	97%
Hispanic/Latino	46	2%
Unknown	11	1%
<b>Total</b>	<b>1,983</b>	<b>100%</b>

# Age Groups

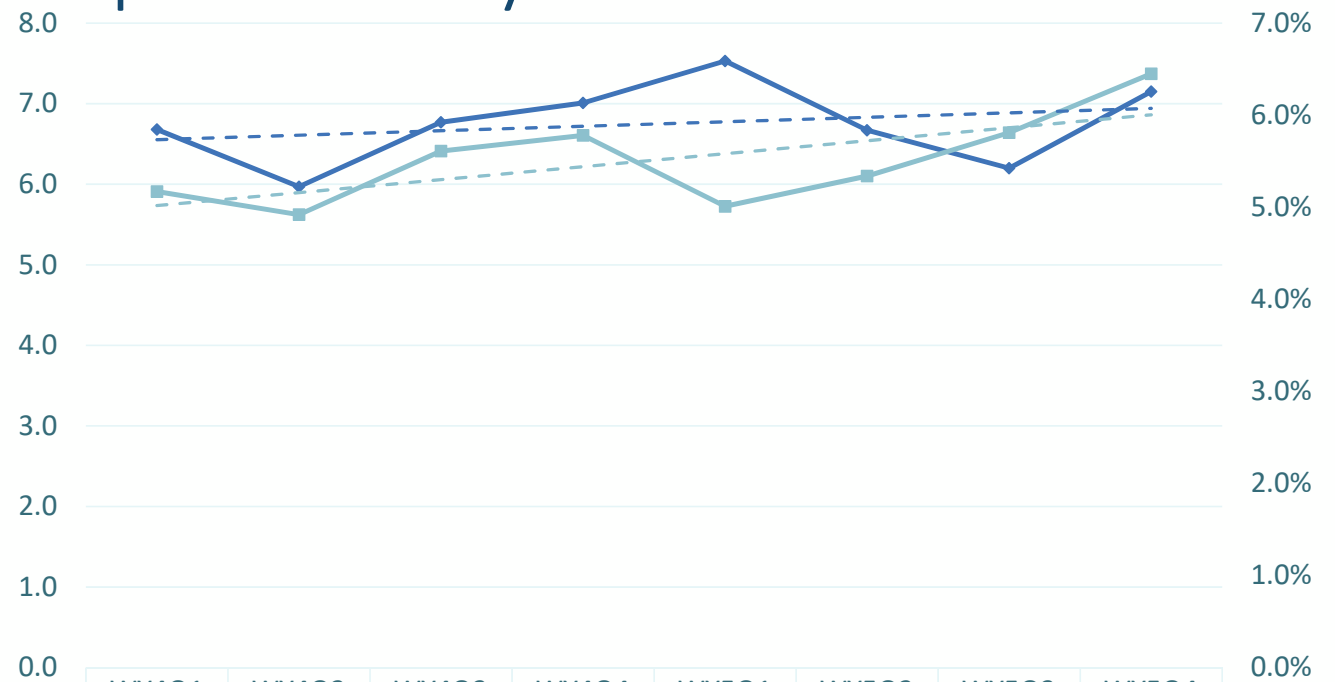


## Contracted Providers — CSoC Specialized Services

CSoC Service	Independent Living/Skills Building	Parent Support & Training	Short Term Respite Care	Youth Support & Training	Total
Region 1	26	1	2	1	32
Region 2	22	1	5	1	29
Region 3	12	1	3	1	17
Region 4	7	1	2	1	11
Region 5	12	1	2	1	16
Region 6	5	1	2	1	9
Region 7	12	1	1	1	15
Region 8	25	1	4	1	30
Region 9	30	1	4	1	36
<b>TOTAL</b>	<b>151</b>	<b>9</b>	<b>25</b>	<b>9</b>	<b>195</b>

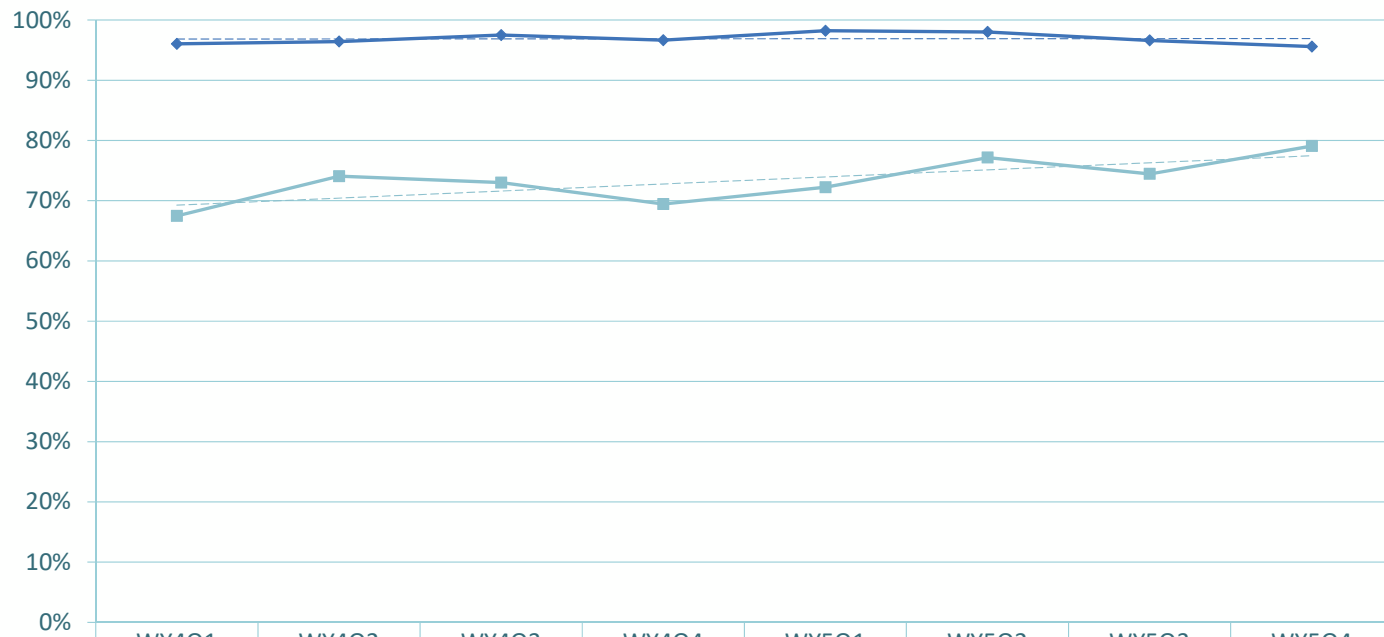
# CSoC Children Inpatient Psychiatric Utilization

Indicator	Number
Number of Members with Any Inpatient Days	161
Number of Children Enrolled during Reporting Period	2,498
Percent	6.45%
ALOS	7.15



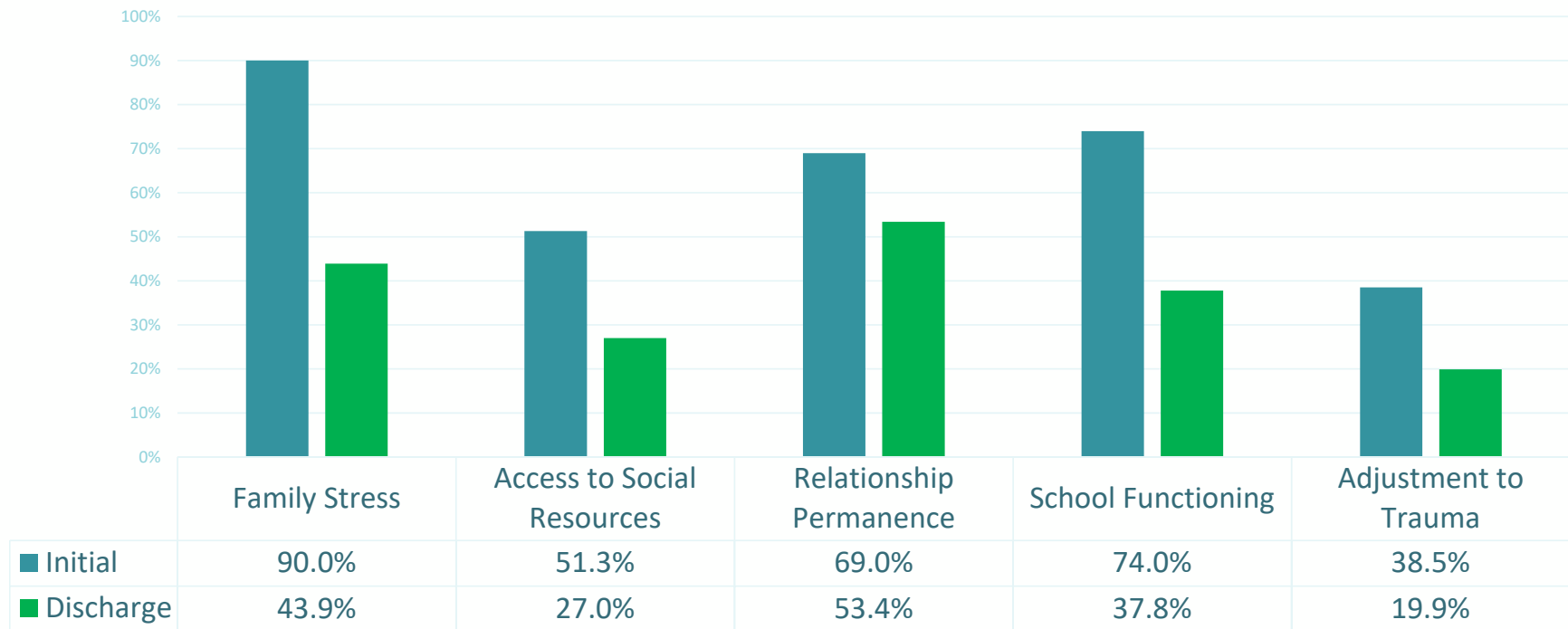
	WY4Q1	WY4Q2	WY4Q3	WY4Q4	WY5Q1	WY5Q2	WY5Q3	WY5Q4
◆ Inpatient Psychiatric Hospital ALOS	6.7	6.0	6.8	7.0	7.5	6.7	6.2	7.2
■ Inpatient Psychiatric Hospitalization Percent	5.2%	4.9%	5.6%	5.8%	5.0%	5.3%	5.8%	6.5%

# Child and Adolescent Needs and Strengths (CANS) Outcomes: Clinical Functioning

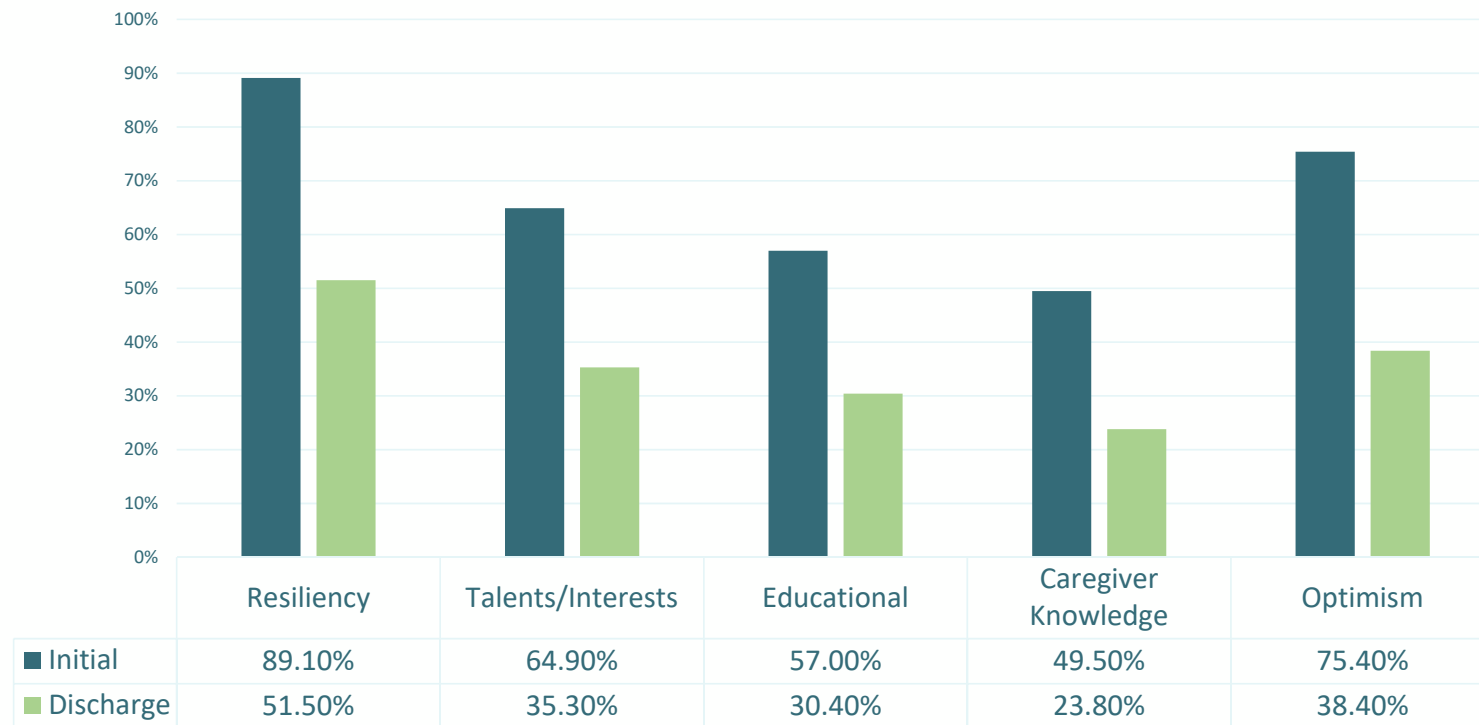


	WY4Q1	WY4Q2	WY4Q3	WY4Q4	WY5Q1	WY5Q2	WY5Q3	WY5Q4
◆ Compliance	96.1%	96.4%	97.5%	96.7%	98.2%	98.0%	96.6%	95.6%
■ Improved Clinical Functioning	67.5%	74.1%	73.0%	69.5%	72.2%	77.2%	74.5%	79.1%

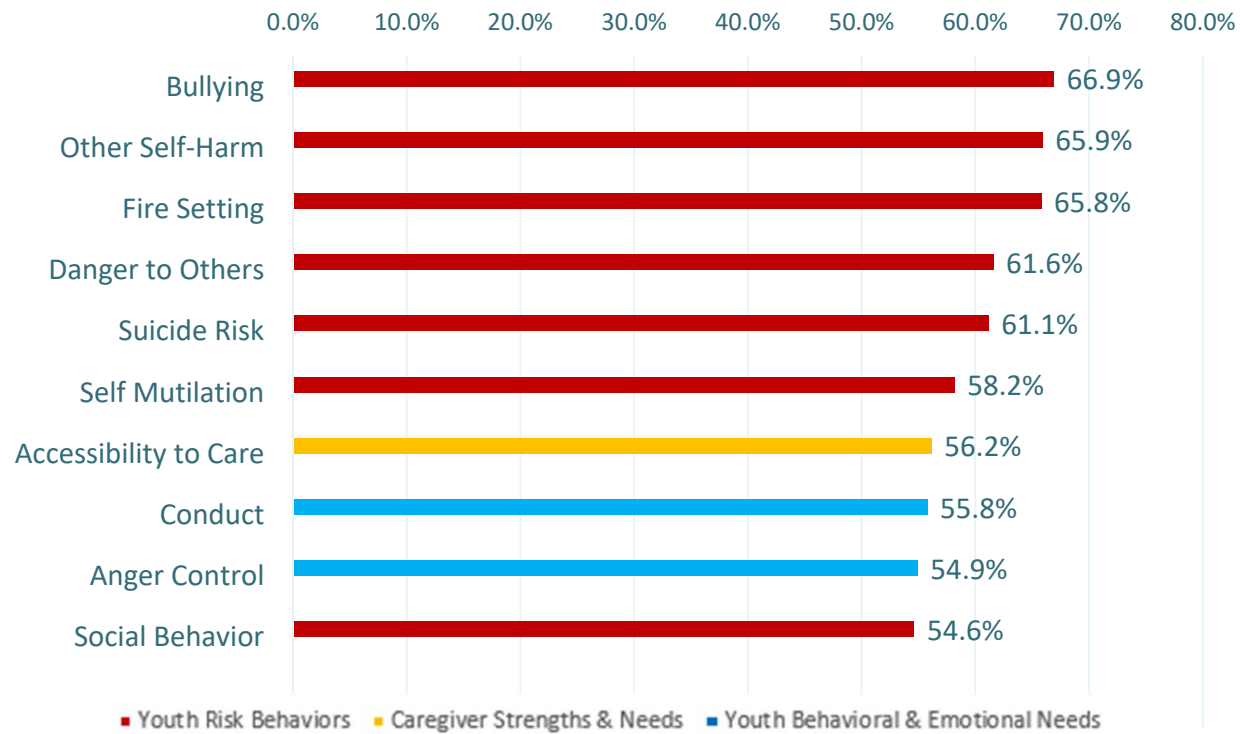
# CANS Outcomes: Reduction in Prevalence of Actionable Needs (2021)



# CANS Outcomes: Improvements in Strength Items (2021)

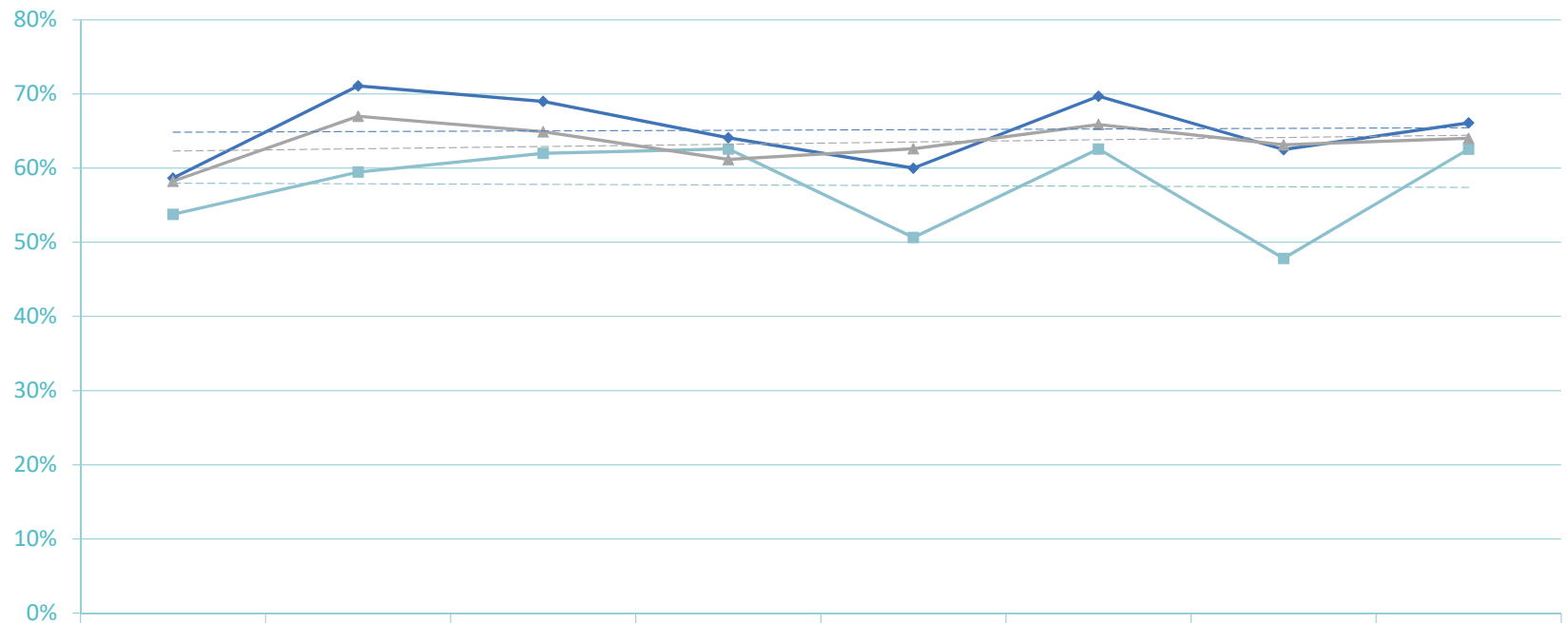


# CANS Outcomes: Top 10 Needs with Greatest Prevalence Reduction (2021)





# CANS: School Functioning

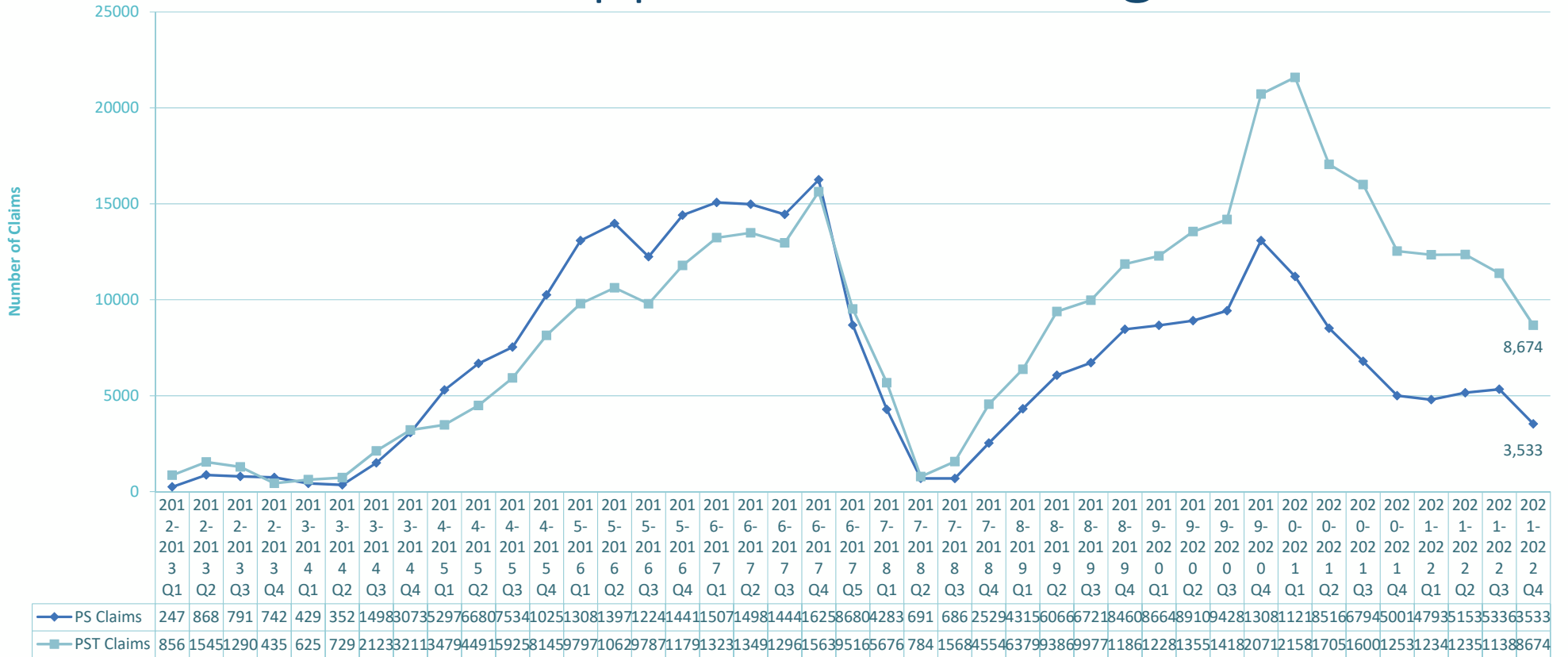


	WY4Q1	WY4Q2	WY4Q3	WY4Q4	WY5Q1	WY5Q2	WY5Q3	WY5Q4
—◆— School Functioning	58.7%	71.1%	69.0%	64.1%	60.0%	69.7%	62.5%	66.1%
—■— New School Attendance	53.8%	59.5%	62.0%	62.6%	50.7%	62.6%	47.8%	62.6%
—▲— New School Behavior	58.2%	67.0%	64.9%	61.2%	62.6%	65.9%	63.1%	64.0%

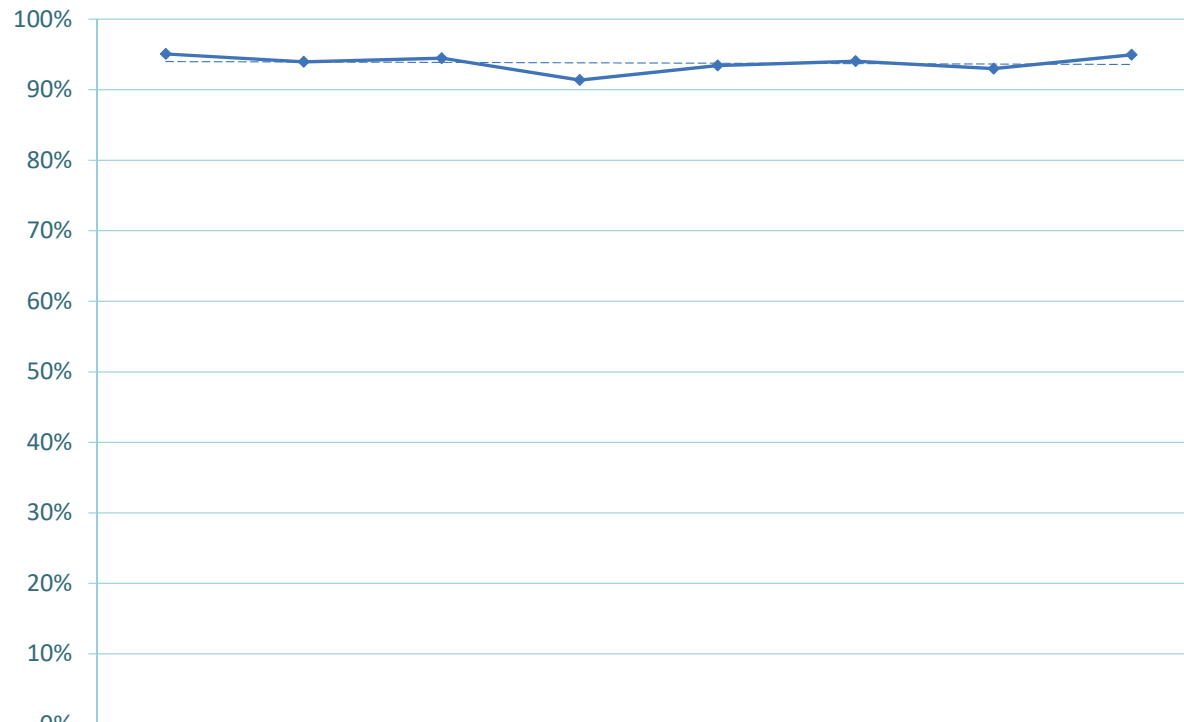
# Individualized Education Plan (IEP)

Reporting Periods	WY4 Q1 (07/20 – 09/20)	WY4 Q2 (10/20 – 12/20)	WY4 Q3 (01/21 – 03/21)	WY4 Q4 (04/21 – 06/21)	WY5 Q1 (07/21 – 09/21)	WY5 Q2 (10/21 – 12/21)	WY5 Q3 (01/22 – 03/22)	WY5 Q4 (04/22 – 06/22)
Reported Count	2490	2495	2471	2508	2385	2349	2411	2454
# of members enrolled in IEP	1106	1090	1134	1156	1198	1140	1128	1120
% of IEPs (Count of IEP enrollment / Reported Count)	44.42%	43.69%	45.89%	46.09%	50.23%	48.53%	46.79%	45.64%
% of IEPs (Count of IEP enrollment / Total Members)	43.65%	42.43%	44.84%	44.58%	48.70%	46.38%	44.67%	43.44%

# Parent/Youth Support and Training Utilization

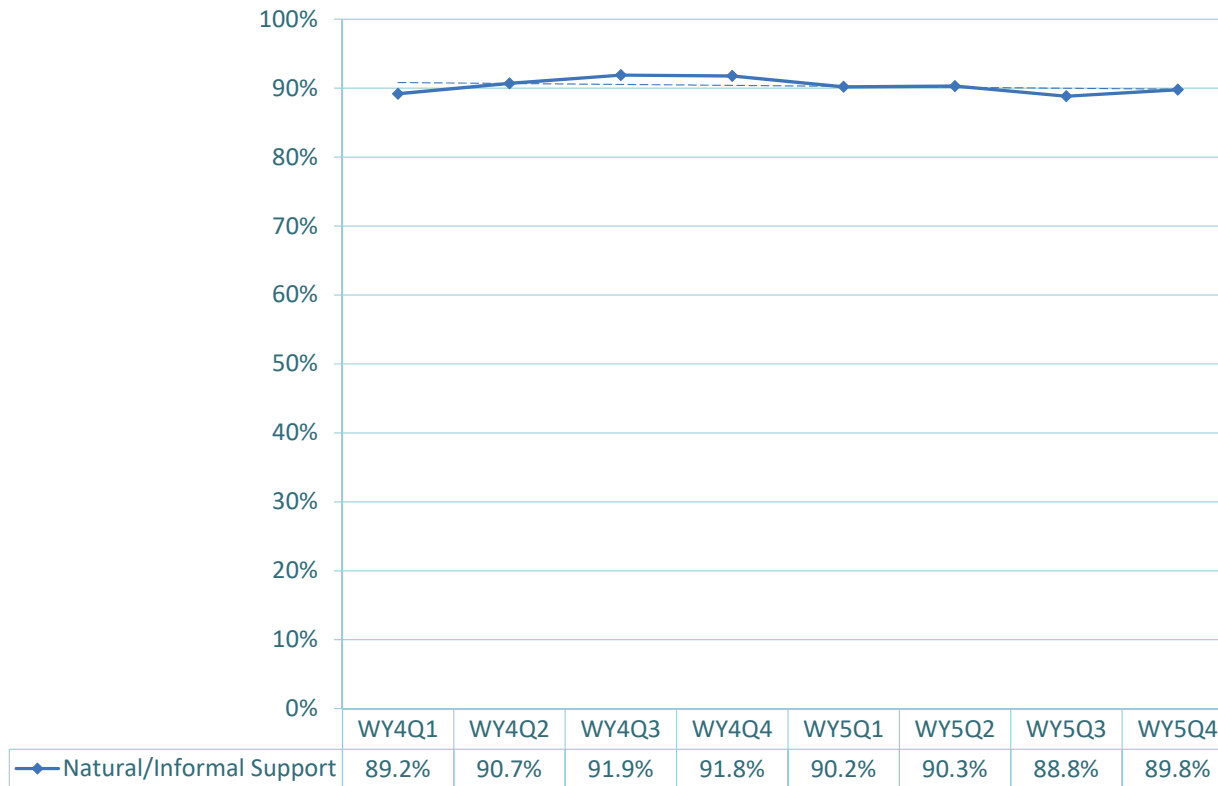


# Living Situation at Discharge



	WY4Q1	WY4Q2	WY4Q3	WY4Q4	WY5Q1	WY5Q2	WY5Q3	WY5Q4
◆ HCB Setting at Discharge	95.1%	94.0%	94.5%	91.4%	93.4%	94.1%	93.0%	94.9%

# Natural and Informal Support Utilization



# THANK YOU

Sareda McPhee

*Coordinated System of Care (CSoC) Director*

*Sareda.McPhee@la.gov | (225) 342-0330*

