



Louisiana Coordinated System of Care (CSoC)

Director's Report to the Governance Board

11/30/2022

Highlights and News

- OBH, Magellan, and Choices attended and presented at the National TCOM conference in September.
- The OBH CSoC Director, Magellan and Eckerd Staff had a successful meeting with a local judge in Region 5 to expand services to youth.
- The OBH CSoC Director, Magellan's Medical Director, and Choices' Executive Director met with Northwest Louisiana Human Services District to expand service options for Shreveport area members.
- OBH, Magellan, and NCFS staff will present during a webinar with Families Helping Families New Orleans in January.
- The CSoC Director joined the Children's Cabinet Advisory Board's Subcommittee for Vulnerable Youth.
- Humana will go live as the sixth Healthy Louisiana MCO in January 2023.

Highlights and News

- The Wraparound Agencies (WAAs) and Family Support Organization (FSO) continue increasing face-to-face contact with families while continuing with Centers for Disease Control and Prevention (CDC) safety precautions. Agencies continue to utilize telehealth when requested by families.
- The Families First Coronavirus Response Act (FFCRA) changes to CSoC disenrollment criteria remain in place, however Medicaid and OBH continue to assist the agencies with disenrollment of identified members who meet full Medicaid benefit eligibility outside of CSoC and meet specific CSoC discharge criteria pre-COVID19.
- Magellan continues to take direct referrals to CSoC and the results continue to make a positive impact on the program.
- Outcomes overall remain positive.

CSoC Enrollment (Enrolled + Presumptive)

Act 1225 Region	10/01/21	12/31/21	4/1/22	7/1/22	9/30/22
1 (Jefferson Parish/New Orleans area)	295	294	306	289	300
2 (Capital area)	268	282	286	270	287
3 (Covington area)	249	227	225	224	215
4 (Thibodaux area)	233	227	246	234	282
5 (Acadiana area)	238	261	277	282	310
6 (Lake Charles area)	124	141	137	124	127
7 (Alexandria area)	137	157	177	182	195
8 (Shreveport area)	161	162	174	135	128
9 (Monroe area)	395	414	410	341	395
TOTAL	2,100	2,165	2,238	2,081	2,239

Member Referrals

Act 1225 Region	12/31/21	4/1/22	7/1/22	9/30/22
1 (Jefferson Parish/New Orleans area)	44	65	66	73
2 (Capital area)	82	94	87	91
3 (Covington area)	93	100	88	89
4 (Thibodaux area)	51	69	64	101
5 (Acadiana area)	107	79	84	97
6 (Lake Charles area)	46	29	34	42
7 (Alexandria area)	42	70	48	58
8 (Shreveport area)	28	70	44	45
9 (Monroe area)	113	127	88	134
TOTAL	606	703	603	730

Referrals by Agency/Entity

Referring Source	7/1/22	9/30/22	Change
Caregiver	6,207	6,492	285
Licensed Mental Health Professional	4,384	4,454	70
Other	4,210	4,331	121
DCFS	2,387	2,459	72
LDOE/School	2,461	2,515	54
OJJ	1,889	1,926	37
Other Juvenile Entities	1,007	1,010	3
Hospitals	1,886	1,945	59
Self or Legal Guardian	1,154	1,157	3
Primary Care Physician (PCP)	265	291	26
OBH	216	216	0
Total	26,066	26,796	730

Gender

Gender	Number of Children Enrolled in CSoC on Last Day of the Reporting Period	Percent of Total Enrollment by Gender
Female	864	43.3%
Male	1,131	56.7%
Unspecified	0	0.0%
TOTAL	1,995	100.0%

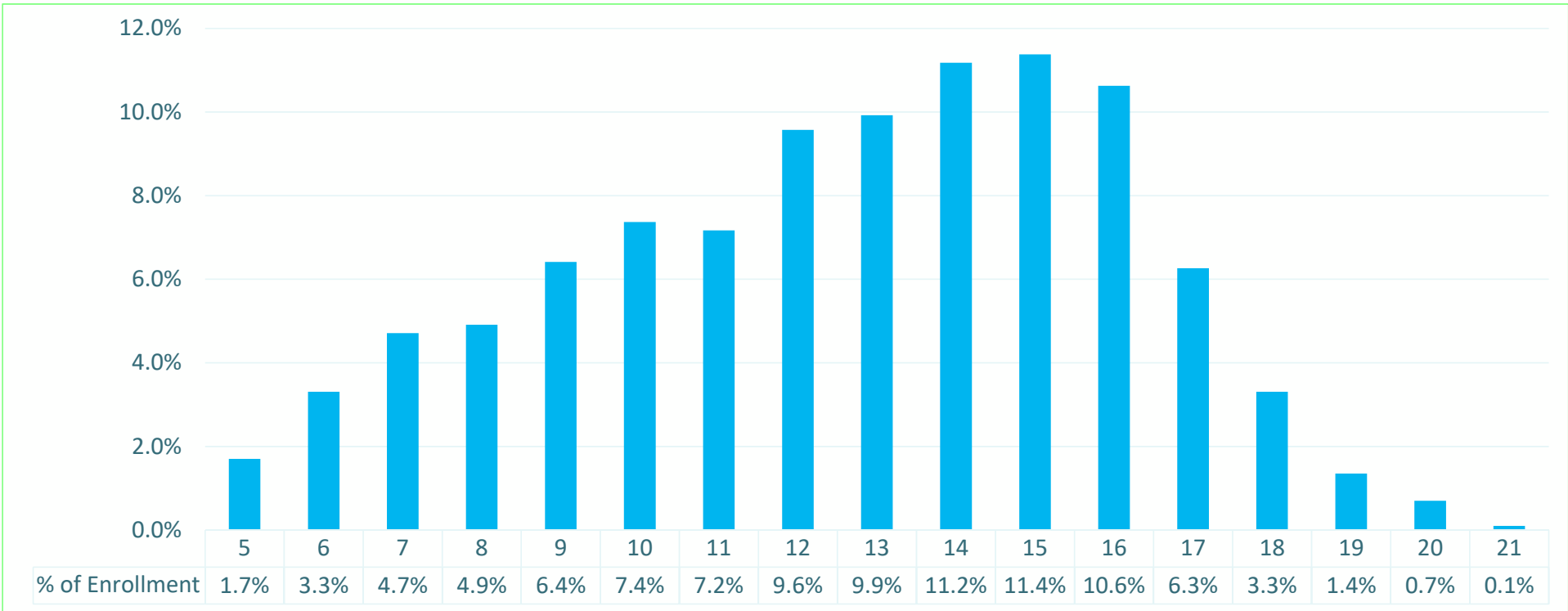
Race

Race	Number of Children Enrolled in CSoC on Last Day of the Reporting Period	Percent of Total Enrollment by Race
Black/African American	1,030	51.6%
White	841	42.2%
American Indian/Alaskan Native	14	0.7%
Multi-Racial	66	3.3%
Other/Single Race	31	1.6%
Asian	4	0.2%
Native Hawaiian/Other Pacific Islander	7	0.4%
Unknown	2	0.1%
Total	1,995	100.0%

Ethnicity

Ethnicity	Number of Children Enrolled in CSoC on Last Day of the Reporting Period	Percent of Total Enrollment by Ethnicity
Non-Hispanic/Non-Latino	1,935	97.0%
Hispanic/Latino	50	2.5%
Unknown	10	0.5%
Total	1,995	100.0%

Age Groups

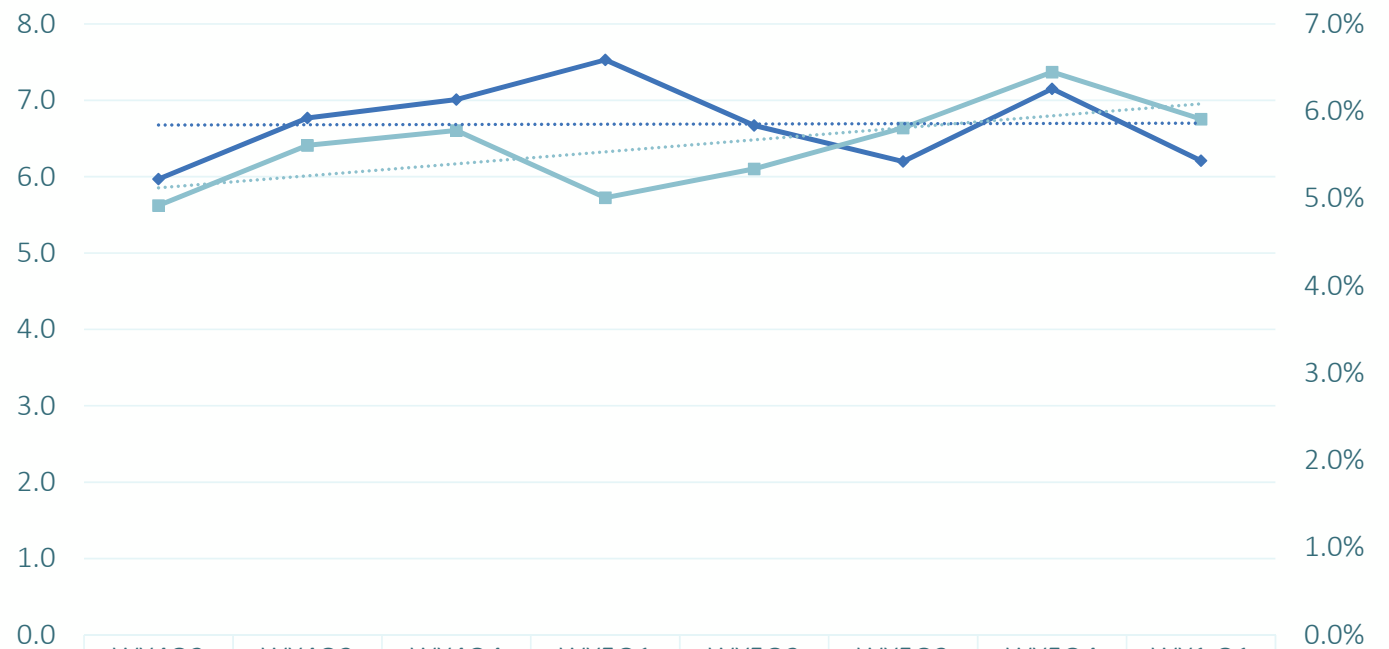


Contracted Providers — CSoC Specialized Services

CSoC Service	Independent Living/Skills Building	Parent Support & Training	Short Term Respite Care	Youth Support & Training	Total
Region 1	26	1	2	1	30
Region 2	21	1	5	1	28
Region 3	11	1	2	1	15
Region 4	7	1	2	1	11
Region 5	11	1	2	1	15
Region 6	5	1	2	1	9
Region 7	11	1	1	1	14
Region 8	25	1	2	1	29
Region 9	26	1	4	1	32
TOTAL	143	9	22	9	183

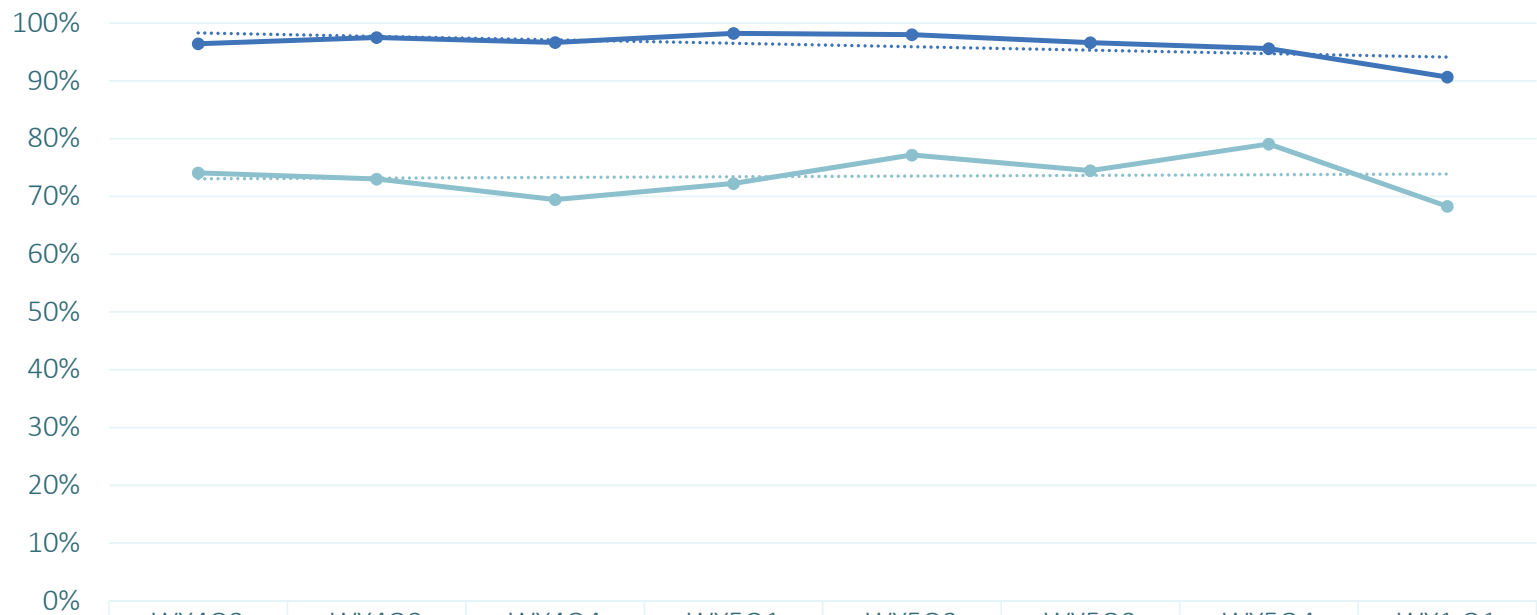
CSoC Children Inpatient Psychiatric Utilization

Indicator	Number
Number of Members with Any Inpatient Days	143
Number of Children Enrolled during Reporting Period	2,419
Percent	5.91%
ALOS	6.21



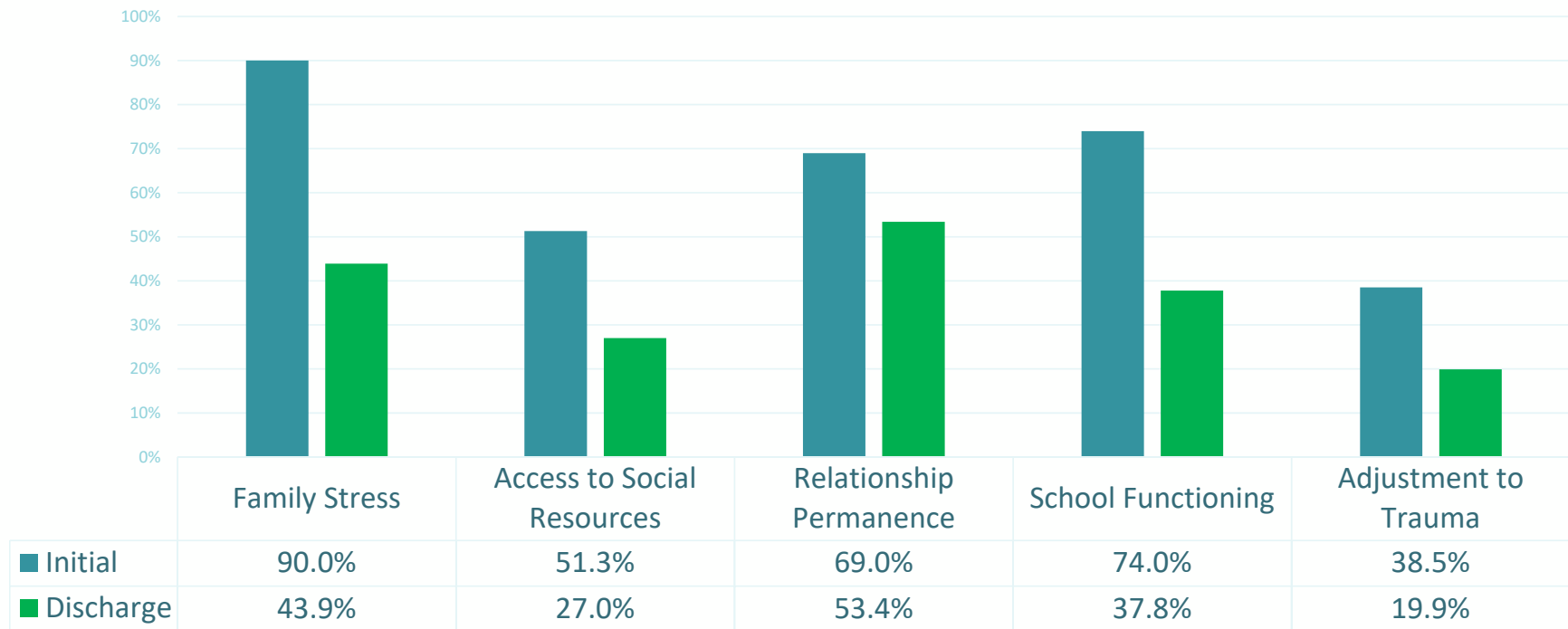
	WY4Q2	WY4Q3	WY4Q4	WY5Q1	WY5Q2	WY5Q3	WY5Q4	WY1 Q1
◆ Inpatient Psychiatric Hospital ALOS	6.0	6.8	7.0	7.5	6.7	6.2	7.2	6.2
■ Inpatient Psychiatric Hospitalization Percent	4.9%	5.6%	5.8%	5.0%	5.3%	5.8%	6.5%	5.9%

Child and Adolescent Needs and Strengths (CANS) Outcomes: Clinical Functioning

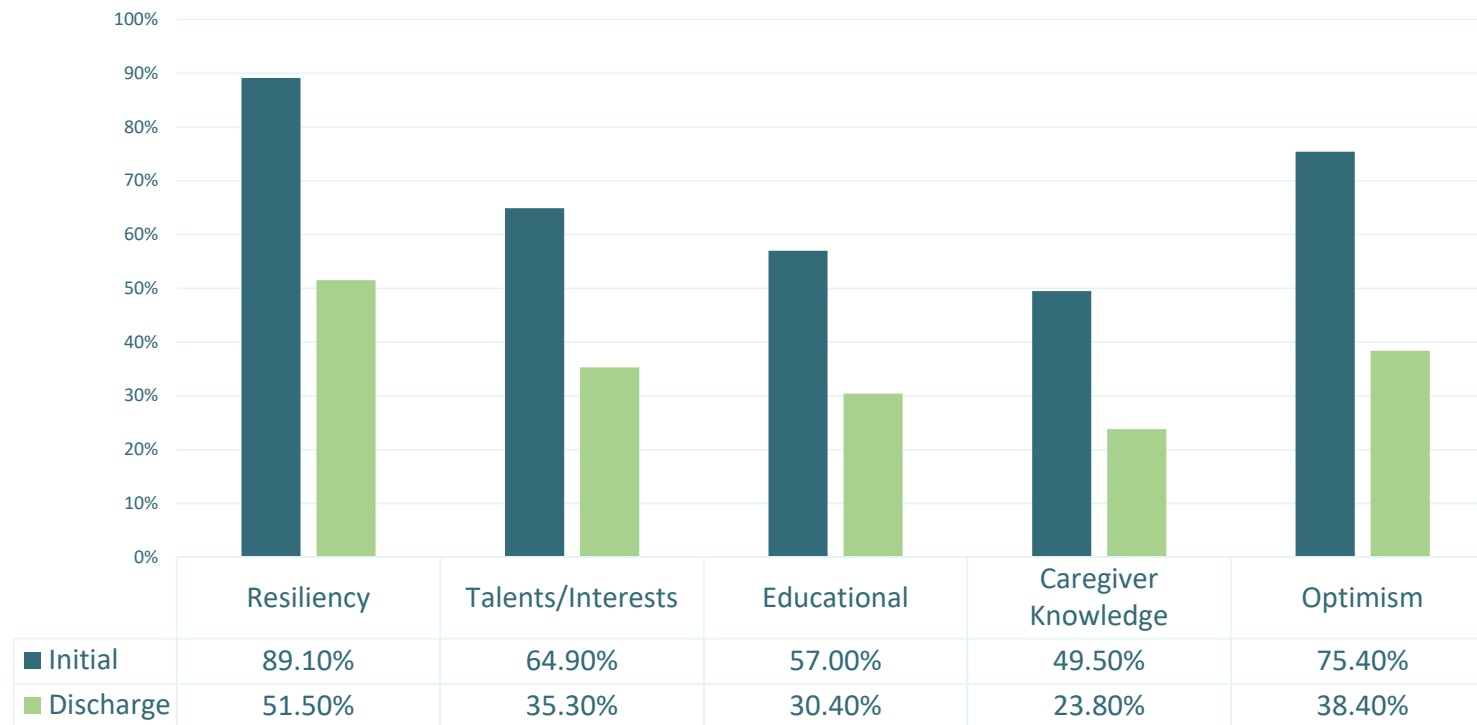


	WY4Q2	WY4Q3	WY4Q4	WY5Q1	WY5Q2	WY5Q3	WY5Q4	WY1 Q1
Compliance	96.4%	97.5%	96.7%	98.2%	98.0%	96.6%	95.6%	90.7%
Improved Clinical Functioning	74.1%	73.0%	69.5%	72.2%	77.2%	74.5%	79.1%	68.3%

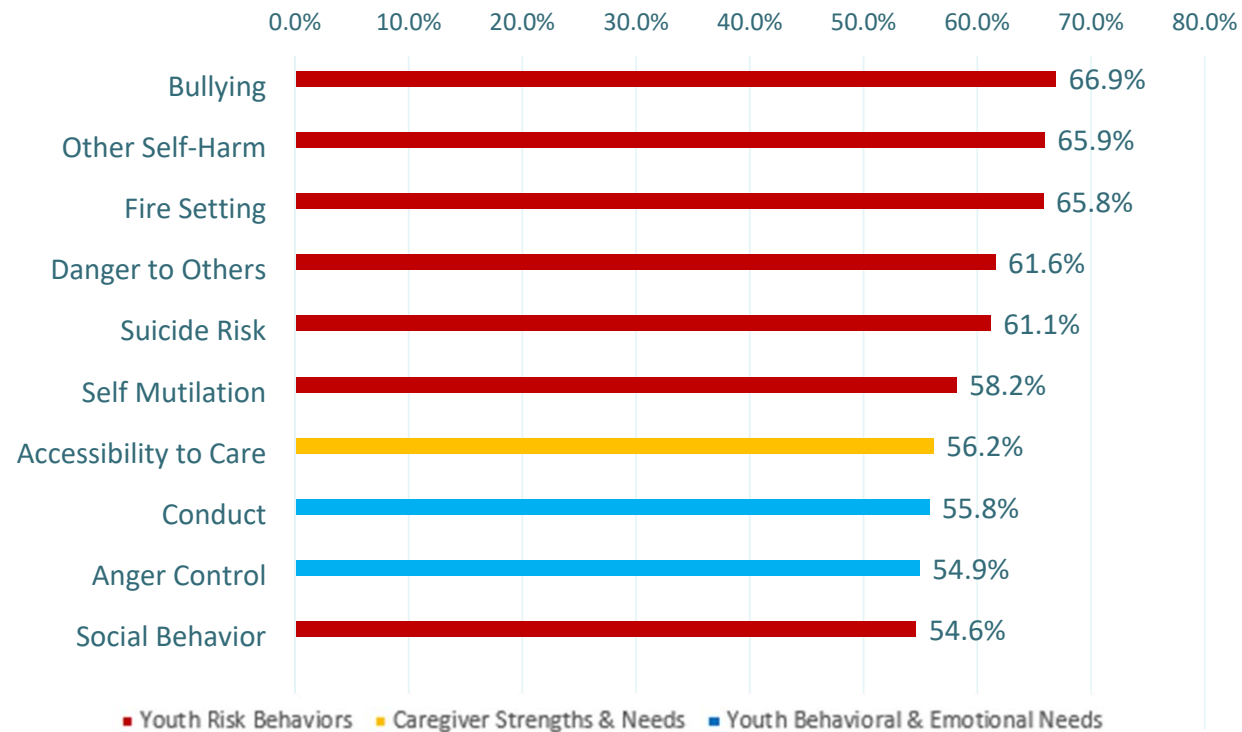
CANS Outcomes: Reduction in Prevalence of Actionable Needs (2021)



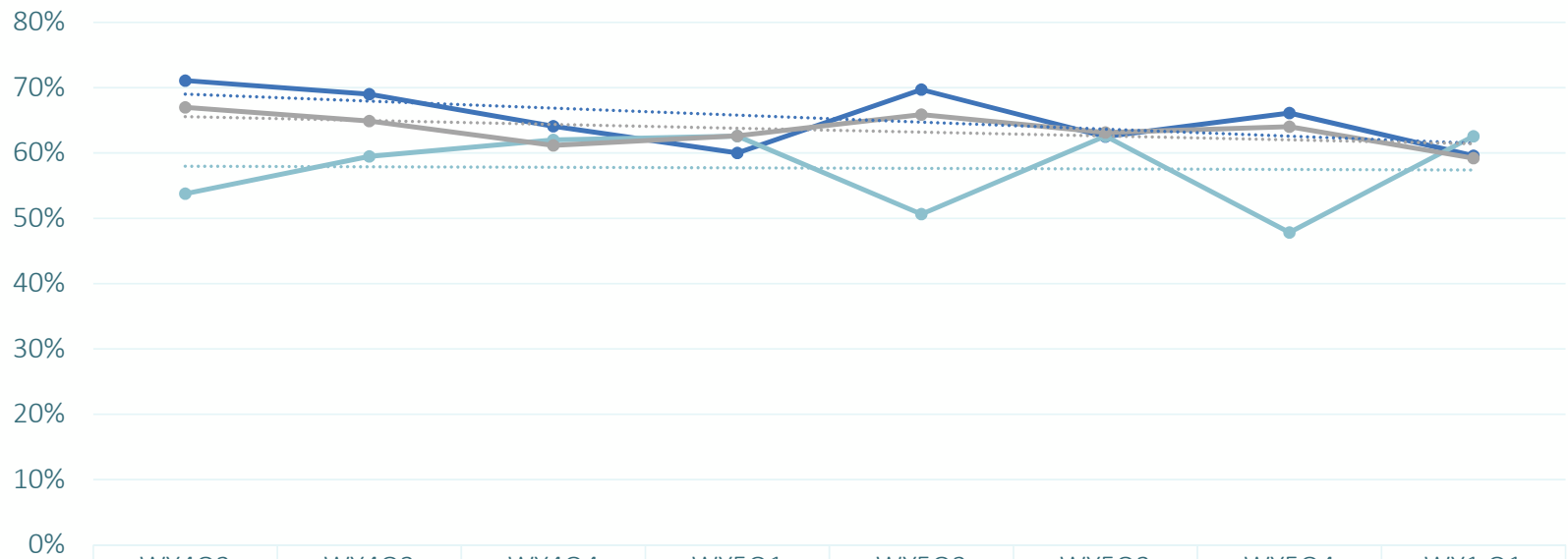
CANS Outcomes: Improvements in Strength Items (2021)



CANS Outcomes: Top 10 Needs with Greatest Prevalence Reduction (2021)



CANS: School Functioning

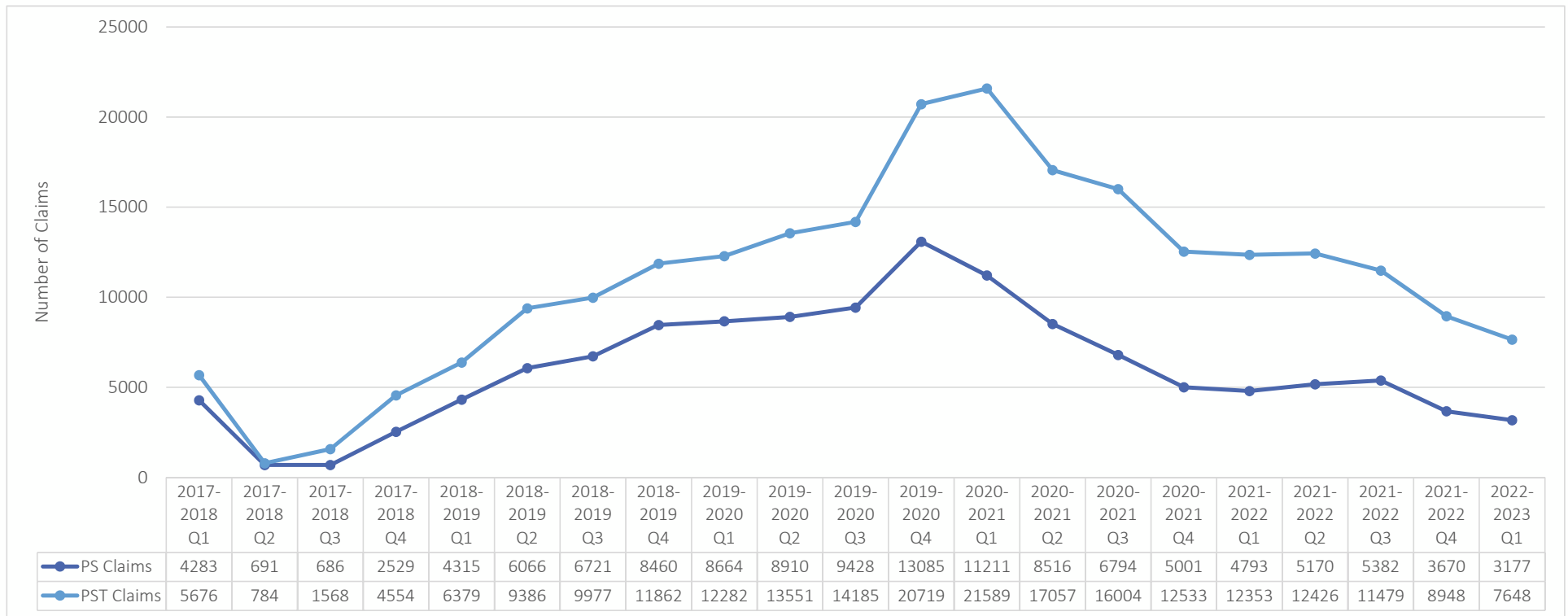


	WY4Q2	WY4Q3	WY4Q4	WY5Q1	WY5Q2	WY5Q3	WY5Q4	WY1 Q1
School Functioning	71.1%	69.0%	64.1%	60.0%	69.7%	62.5%	66.1%	59.6%
New School Attendance	53.8%	59.5%	62.0%	62.6%	50.7%	62.6%	47.8%	62.6%
New School Behavior	67.0%	64.9%	61.2%	62.6%	65.9%	63.1%	64.0%	59.2%

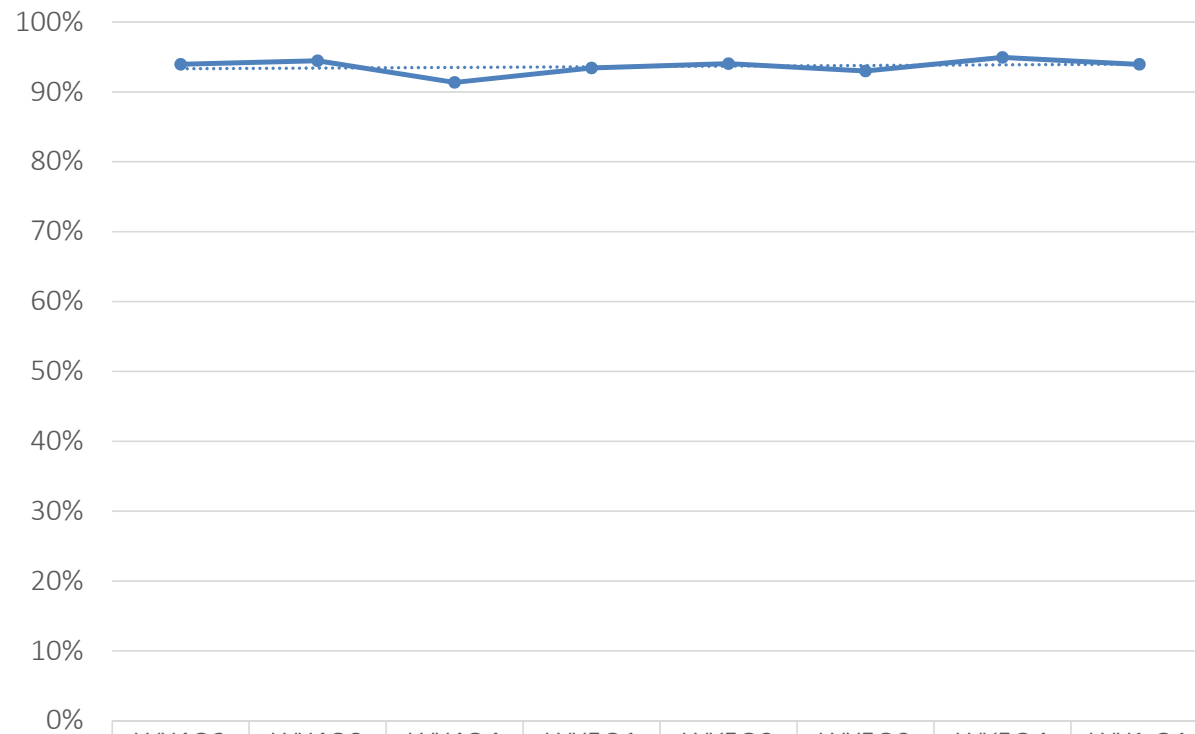
Individualized Education Plan (IEP)

Reporting Periods	WY4 Q2 (10/20 – 12/20)	WY4 Q3 (01/21 – 03/21)	WY4 Q4 (04/21 – 06/21)	WY5 Q1 (07/21 – 09/21)	WY5 Q2 (10/21 – 12/21)	WY5 Q3 (01/22 – 03/22)	WY5 Q4 (04/22 – 06/22)	WY1 Q1 (07/22 – 09/22)
Reported Count	2495	2471	2508	2385	2349	2411	2454	2332
# of members enrolled in IEP	1090	1134	1156	1198	1140	1128	1120	1072
% of IEPs (Count of IEP enrollment / Reported Count)	43.69%	45.89%	46.09%	50.23%	48.53%	46.79%	45.64%	45.97%
% of IEPs (Count of IEP enrollment / Total Members)	42.43%	44.84%	44.58%	48.70%	46.38%	44.67%	43.44%	44.01%

Parent/Youth Support and Training Utilization



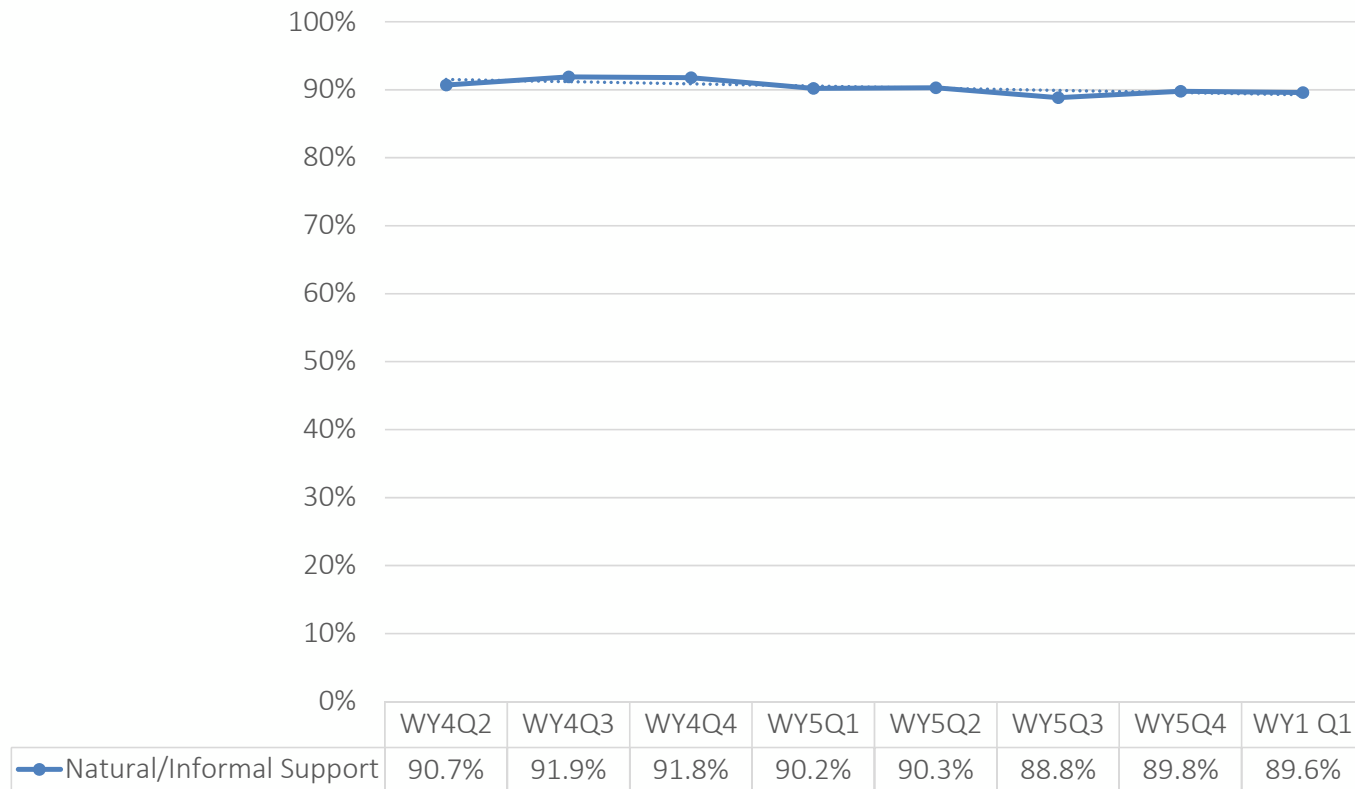
Living Situation at Discharge



HCBS Setting at Discharge

WY4Q2	WY4Q3	WY4Q4	WY5Q1	WY5Q2	WY5Q3	WY5Q4	WY1 Q1
94.0%	94.5%	91.4%	93.4%	94.1%	93.0%	94.9%	93.9%

Natural and Informal Support Utilization



THANK YOU

Sareda McPhee

Coordinated System of Care (CSoC) Director

Sareda.McPhee@la.gov | (225) 342-0330

