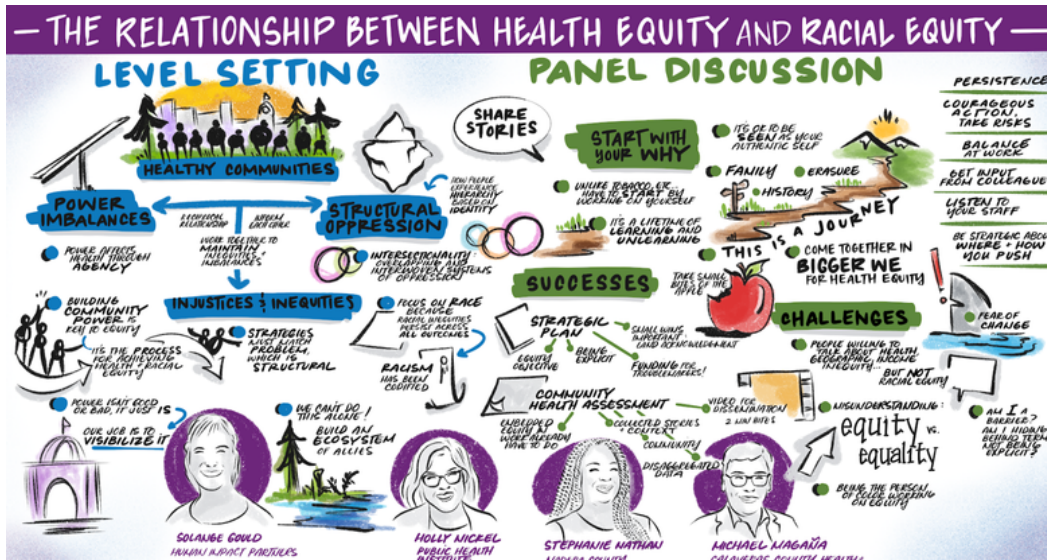


The health equity briefs

National Association of State Offices of Minority Health Newsletter

SPOTLIGHT ON CALIFORNIA'S OFFICE OF HEALTH EQUITY



The Office of Health Equity in the California Department of Public Health has been working to support an equitable COVID-19 recovery by strengthening local health infrastructure across the state.

Historical funding has allowed them to collaborate with California's 61 local health jurisdictions to build equity capacity through hiring, providing resources, and developing work plans. An **organizational assessment** defines equity infrastructure across four domains and 12 core competencies, enabling locals to evaluate and prioritize equity goals.

To further these competencies, the office launched the **Virtual Equity Toolkit (VET) 2.0** - an interactive web version of VET 1.0 with advanced search features to filter through hundreds of equity resources. These investments have led to remarkable results. Many local health departments have established dedicated equity teams. Recently, the office hosted California's inaugural LHM Equity Convening, bringing together representatives from all 61 jurisdictions to celebrate wins, discuss challenges, and continue building the future of equitable public health.



With new equity staff capacity, an equity **portal** for sharing resources, and a long-term outlook, the Office of Health Equity maximizes impact and lays the groundwork for sustainable change.



NOVEMBER 2023



Our Mission:

Promote and protect the health of racial and ethnic minority communities, tribal organizations and nations, by preventing disease and injury and assuring optimal health and well-being.

HIGHLIGHTS:

Spotlight on California's Office of Health Equity

Celebrating Indian Heritage Month and Promoting Health Equity

November is . . .

Reminder! Join or renew your membership today

Save the Date for Health Equity Summit 2024

Resources

In case you missed it:

Celebrating Indian Heritage Month and Promoting Health Equity: *Spotlight on Indigenous Social Determinants of Health*

A community's health is shaped by social determinants - conditions in the environments where people are born, live, learn, work, play, and age. However, indigenous communities in the U.S. face unique social determinants that perpetuate health disparities.

The Indigenous Social Determinants of Health framework identifies ten interconnected areas that impact indigenous health outcomes:

- Indigenous language
- Sacred traditions and lifestyles
- Government policy
- Access to traditional foods
- Sovereignty
- Lands, waterways, and environment
- Education
- Economic development
- Healthcare
- Cultural identity

Understanding and addressing indigenous social determinants is critical to eliminating inequities. Learn more about this vital framework and view resources at IndigenousPHI.org.



November is . . .

- [American Diabetes Month](#)
- [Bladder Health Month](#)
- [COPD Awareness Month](#)
- [Gastric Cancer/Stomach Cancer Awareness Month](#)
- [Lung Cancer Awareness Month](#)
- [National Alzheimer's Disease Awareness Month](#)
- [Pancreatic Cancer Awareness Month](#)

REMINDER

Join or renew your
membership today and
receive a thank-you gift



Please take advantage of this exclusive opportunity and be one of the first 50 applicants to sign up to join or renew your NASOMH membership before December 31.

Together, we can amplify our collective efforts to build sustainability for Minority Health and Health Equity Offices and Programs and push for policies, education, programs, and funding that seek to eliminate inequalities.

NASOMH now accepts credit card payments for membership dues, and those who want to use this option can reach out to our CFO, Lisa Stafford, at nasomh02@gmail.com



SAVE THE DATE FOR HEALTH EQUITY SUMMIT 2024

The 2024 Health Equity Summit will occur on April 4-5, 2024, in Harrisburg, PA. This two-day event brings together stakeholders across sectors to address health disparities and advance health equity locally and nationwide.

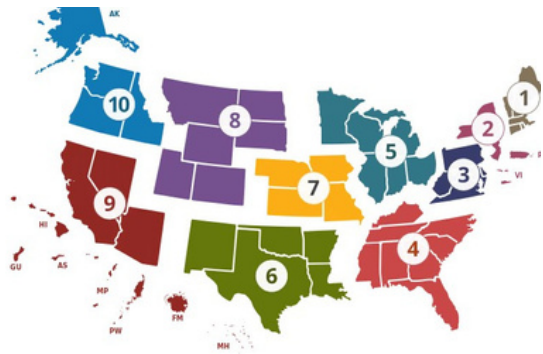
With an impressive lineup of speakers, panels, and sessions, the summit provides an opportunity to collaborate, share best practices, and catalyze collective action.

Topics will include housing, education, economic stability, community development, and more through an equity lens. For more details and registration information, [click here](#).



DO YOU KNOW YOUR HHS REGION?

Click on the map to learn about the HHS Regions and find your HHS representative.



RESOURCES

The P4HE Resource Library is a virtual portal that provides action-oriented research, practice, and policies to advance health equity. Its mission is to increase equity in health by offering free access to field-tested, evidence-informed, and evidence-based programs, strategies, and high-quality research.

The Health Disparities Bibliography is a valuable resource that offers a comprehensive overview of key literature on health disparities issues in the United States. This curated bibliography includes a range of important books, documents, journal articles, and federal reports that have significantly contributed to shaping our understanding of health disparities.

IN CASE YOU MISSED IT:

Review of Federal Policies and Health Inequities

A new report from the National Academies of Sciences, Engineering, and Medicine examines how federal policies across sectors shape health disparities. It provides an independent, scientific review of existing laws, regulations, and programs that may perpetuate or mitigate inequities.

Key findings identify cross-cutting themes like implicit biases in policy design and unequal access for marginalized groups. The report highlights opportunities to advance equity through policy changes.

This invaluable study underscores how broader systems influence population health. Review the full findings: [Federal Policies and Health Inequities](#)

HHS Releases a New Language Access Plan

The U.S. Department of Health and Human Services (HHS) released its updated Language Access Plan to ensure greater access to the life-saving services it provides for people with Limited English Proficiency (LEP) and disabilities.

[Please take a look at the updated plan.](#)



+317-920-4928



nasomh@gmail.com



<https://nasomh.org/>