



**Making
Referrals**

**Technical
Assistance**



**BFH
Developmental
Screening Toolkit**

Streamlined Implementation for EPSDT Development Screens!

Provider Tools and Resources

**Louisiana &
Early Childhood
Developmental
Screening**

Objectives

Dr. Patti Barovechio

Statewide Nurse Consultant
Louisiana Department of Health/Office of Public Health
Bureau of Family Health



Objectives



Explore Louisiana provider tools for streamlined implementation of EPSDT screening services

Louisiana Developmental Screening Guidelines and Developmental Screening Toolkit

Discuss resources available from the Academy of Pediatrics and customized technical assistance options available through the Bureau of Family Health.

*EPSDT
Periodicity*

*Louisiana
Developmental
Screening
Guidelines*



Why Developmental Screening?

- **Louisiana ranks #1 with the highest percentage of Children and Youth with Special Health Care Needs (CYSHCN) in the country 0-17 yrs**
 - 24.2% LA/18.9 US CYSHCN
 - 29.6% of CYSHCN live under the FPL
- **Louisiana ranks 3rd in the nation with the percentage of Children with a Mental, Emotional, Developmental or Behavioral Problem 3-17 yrs**
 - 29% LA/22.1 US
 - 42% of these children live under the FPL
- **Less than 1/3 of Louisiana's children (9 through 35 months) received a parent-completed developmental screening in the past year**
 - 29% LA/36.4 US

National Survey of Children's Health (NSCH) 2018/19. Large sample, parent report survey. NSCH provides data on physical and mental health, access to quality health care, and the child's family, neighborhood, school, and social context. Funded and directed by the Health Resources and Services Administration Maternal and Child Health Bureau.

*Increasing
Louisiana's
Screening
Rates*

*Louisiana
Medicaid
Child Core
Data*

Children's Healthcare Quality Measures

Percentage of Children Screened for Risk of Developmental, Behavioral, and Social Delays Using a Standardized Screening Tool Preceding or on their First, Second, or Third Birthday, FFY 2018 (LA hybrid report 411 chart audits)

o LA Medicaid/CHIP 18.3% /28 states reporting/32.7% median

Percentage of children who received six or more well-visits by 15 months

o LA Medicaid/CHIP 59.7%/48 states reporting/median 64%

Children's Healthcare Quality Measures, CMS. <https://www.medicaid.gov/medicaid/quality-of-care/performance-measurement/adult-and-child-health-care-quality-measures/childrens-health-care-quality-measures/index.html>

Louisiana Medicaid EPSDT Bright Futures Periodicity

Recommendations for Preventive Pediatric Health Care
 Bright Futures/American Academy of Pediatrics

This chart provides a comprehensive overview of recommended preventive health care services for children and adolescents, categorized by age and sex. The chart is organized into columns for different age groups: Newborn, 1-2 years, 3-5 years, 6-11 years, and 12-17 years. The rows list various services, including history and physical examinations, immunizations, laboratory tests, and behavioral assessments. The chart is color-coded to indicate the frequency of services: yellow for annual, green for biennial, and blue for less frequent services.

AGE	Prenatal	Newborn	1-2 y	3-5 y	6-11 y	12-17 y
HISTORY						
Developmental						
MEASUREMENTS						
Length/Height and Weight						
Head Circumference						
Weight for Length						
Body Mass Index ^a						
Blood Pressure ^a						
SENSORY SCREENING						
Vision ^a						
Hearing						
DEVELOPMENTAL/BEHAVIORAL HEALTH						
Developmental Screening ^a						
Autism Spectrum Disorder Screening ^a						
Developmental Surveillance						
Psychosocial/Behavioral Assessment ^a						
Tobacco, Alcohol, or Drug Use Assessment ^a						
Depression Screening ^a						
Maternal Depression Screening ^a						

For further information, see "Identification, Evaluation, and Management of Children With Autism Spectrum Disorder" (<http://www.aapublications.org/content/145/1/a201034475>).

[http://www.thelancet.com/journal/2009/05/27/S0140-6736\(09\)61348-8](http://www.thelancet.com/journal/2009/05/27/S0140-6736(09)61348-8)

18. These may be modified, depending on entry point into a bubble and individual need

19. Confirm initial screen was accomplished, verify results, and follow up, as appropriate. The Recommended Uniform Screening Panel (<https://www.hhs.gov/genetics-committee/feasible-disorders/screening/index.html>), as determined by The Secretary's Advisory Committee on Heritable Disorders in Newborns and Children, and state newborn screening laws/regulations (<https://www.hhs.gov/genetics-committee/newborn-screening/states/>) establish the criteria for and coverage of newborn screening procedures and programs.

(continued)

WINE, 2021, PAPER
 5, 100-105

* = range during which a service may be provided

	INFANCY								EARLY CHILDHOOD							
AGE ¹	Prenatal ²	Newborn ³	3-5 d ⁴	By 1 mo	2 mo	4 mo	6 mo	9 mo	12 mo	15 mo	18 mo	24 mo	30 mo	3 y	4 y	
HISTORY																
Initial/Interval	●	●	●	●	●	●	●	●	●	●	●	●	●	●	●	
MEASUREMENTS																
Length/Height and Weight		●	●	●	●	●	●	●	●	●	●	●	●	●	●	
Head Circumference		●	●	●	●	●	●	●	●	●	●	●				
Weight for Length		●	●	●	●	●	●	●	●	●	●					
Body Mass Index ⁵												●	●	●	●	
Blood Pressure ⁶		★	★	★	★	★	★	★	★	★	★	★	★	●	●	
SENSORY SCREENING																
Vision ⁷		★	★	★	★	★	★	★	★	★	★	★	★	●	●	
Hearing		● ⁸	● ⁹			★	★	★	★	★	★	★	★	★	●	
DEVELOPMENTAL/BEHAVIORAL HEALTH																
Developmental Screening ¹¹								●			●		●			
Autism Spectrum Disorder Screening ¹²											●	●				
Developmental Surveillance		●	●	●	●	●	●		●	●		●		●	●	
Psychosocial/Behavioral Assessment ¹³		●	●	●	●	●	●	●	●	●	●	●	●	●	●	
Tobacco, Alcohol, or Drug Use Assessment ¹⁴																
Depression Screening ¹⁵																
Maternal Depression Screening ¹⁶				●	●	●	●									

*EPSDT
Periodicity*

*Louisiana
Developmental
Screening
Guidelines*



Why Developmental Screening?

■ **Louisiana ranks #1 with the highest percentage of Children and Youth with Special Health Care Needs (CYSHCN) in the country 0-17 yrs**

- 24.2% LA/18.9 US CYSHCN
- 29.6% of CYSHCN live under the FPL

■ **Louisiana ranks 3rd in the nation with the percentage of Children with a Mental, Emotional, Developmental or Behavioral Problem 3-17 yrs**

- 29% LA/22.1 US
- 42% of these children live under the FPL

■ **Less than 1/3 of Louisiana's children (9 through 35 months) received a parent-completed developmental screening in the past year**

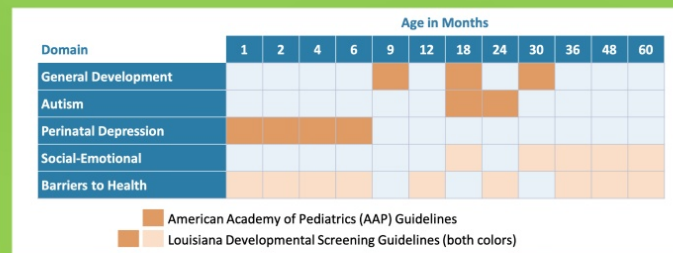
- 29% LA/36.4 US

National Survey of Children's Health (NSCH) 2018/19. Large sample, parent report survey. NSCH provides data on physical and mental health, access to quality health care, and the child's family, neighborhood, school, and social context. Funded and directed by the Health Resources and Services Administration Maternal and Child Health Bureau.

*Increasing
Louisiana's
Screening
Rates*

*Louisiana
Medicaid
Child Core
Data*

Louisiana Developmental Screening Guidelines Streamlined Implementation Starts Here!



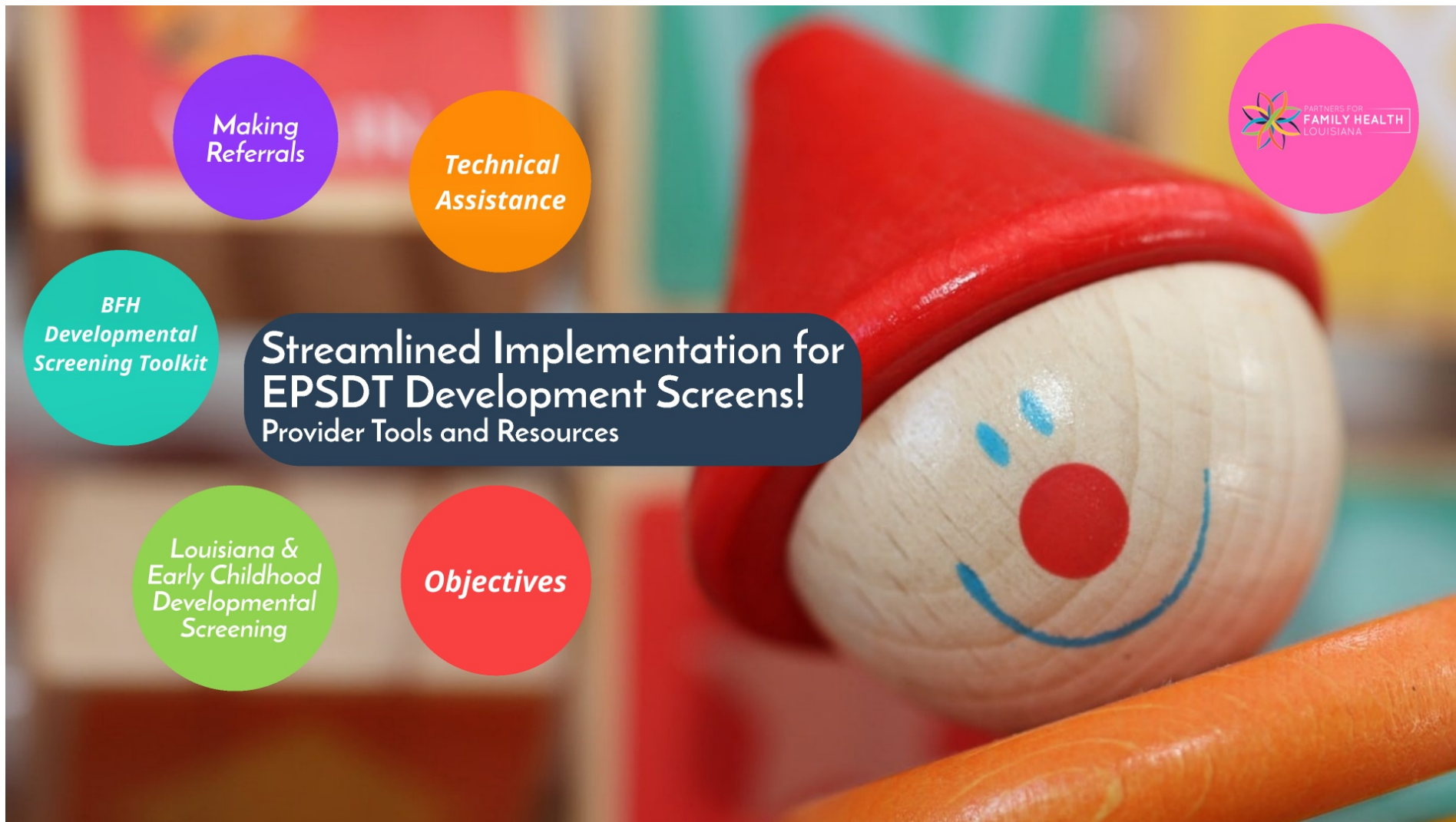
Domain	Recommended Instruments
General Development	Ages and Stages Questionnaire-3 rd Edition (ASQ-3)
Autism	Modified-Checklist for Autism in Toddlers-Revised w/Follow-up (M-CHAT-R/F)
Perinatal Depression	Patient Health Questionnaire-2 (PHQ-2), Patient Health Questionnaire-9 (PHQ-9), Safe Environment for Every Kid (SEEK)
Social Emotional	Brief-Early Childhood Screening Assessment (ECSA), Ages and Stages Questionnaire: Social Emotional-2 nd Edition (ASQ:SE-2)
Barriers to Health	Safe Environment for Every Kid (SEEK), Survey of Wellbeing of Young Children: Family Questions

Updated Dec '2020!

4 Great Reasons for Developmental Screening Quality Improvement

1. Early Identification + Referral = Early Intervention
Timely intervention = maximum outcome benefit
2. Follows best-practice/evidence-based guidelines
3. New reimbursement stream for Medicaid providers
4. Clinic quality improvement (QI) projects qualify for MCO4 credits





*Making
Referrals*

*Technical
Assistance*



*BFH
Developmental
Screening Toolkit*

Streamlined Implementation for EPSDT Development Screens!

Provider Tools and Resources

*Louisiana &
Early Childhood
Developmental
Screening*

Objectives



Developmental Screening Toolkit

Quality Improvement Made Easy



STEP 1
Assess & Create a Plan



STEP 2
Train the Team



STEP 3
Implement the Plan

***Assess &
Plan***

Train

Implement

LDH.LA.Gov/DevScreenToolkit

Assess & Plan

Note: While a lot of our current processes are still in development, consider how they may extend to 2018 or even 2019 to implement new capabilities, systems and collaborations, while also providing need to be able to manage strategic planning, strategy, and business workflow? What do you need to design to improve your current workflow?

Yes ☐ No ☐

Does your staff use an Electronic Health Record (EHR) system?

Yes ☐ No ☐

If your organization does not have an EHR system, what EHR system do you support?

If you are looking to transition, develop, or upgrade an EHR system, what EHR system do you support?

Yes ☐ No ☐

Do you use the Type 1 CPOE in the Type 1 CPOE?

Yes ☐ No ☐

Do you use the Type 2 CPOE in the Type 2 CPOE?

Yes ☐ No ☐

Do you use the Type 3 CPOE in the Type 3 CPOE?

Yes ☐ No ☐

Do you use the Type 4 CPOE in the Type 4 CPOE?

Yes ☐ No ☐

Do you use the Type 5 CPOE in the Type 5 CPOE?

Yes ☐ No ☐

Do you use the Type 6 CPOE in the Type 6 CPOE?

Yes ☐ No ☐

Do you use the Type 7 CPOE in the Type 7 CPOE?

Yes ☐ No ☐

Do you use the Type 8 CPOE in the Type 8 CPOE?

Yes ☐ No ☐

Do you use the Type 9 CPOE in the Type 9 CPOE?

Yes ☐ No ☐

Do you use the Type 10 CPOE in the Type 10 CPOE?

Yes ☐ No ☐

Do you use the Type 11 CPOE in the Type 11 CPOE?

Yes ☐ No ☐

Do you use the Type 12 CPOE in the Type 12 CPOE?

Yes ☐ No ☐

Do you use the Type 13 CPOE in the Type 13 CPOE?

Yes ☐ No ☐

Do you use the Type 14 CPOE in the Type 14 CPOE?

Yes ☐ No ☐

Do you use the Type 15 CPOE in the Type 15 CPOE?

Yes ☐ No ☐

Do you use the Type 16 CPOE in the Type 16 CPOE?

Yes ☐ No ☐

Do you use the Type 17 CPOE in the Type 17 CPOE?

Yes ☐ No ☐

Do you use the Type 18 CPOE in the Type 18 CPOE?

Yes ☐ No ☐

Do you use the Type 19 CPOE in the Type 19 CPOE?

Yes ☐ No ☐

Do you use the Type 20 CPOE in the Type 20 CPOE?

Yes ☐ No ☐

Do you use the Type 21 CPOE in the Type 21 CPOE?

Yes ☐ No ☐

Do you use the Type 22 CPOE in the Type 22 CPOE?

Yes ☐ No ☐

Do you use the Type 23 CPOE in the Type 23 CPOE?

Yes ☐ No ☐

Do you use the Type 24 CPOE in the Type 24 CPOE?

Yes ☐ No ☐

Do you use the Type 25 CPOE in the Type 25 CPOE?

Yes ☐ No ☐

Do you use the Type 26 CPOE in the Type 26 CPOE?

Yes ☐ No ☐

Do you use the Type 27 CPOE in the Type 27 CPOE?

Yes ☐ No ☐

Do you use the Type 28 CPOE in the Type 28 CPOE?

Yes ☐ No ☐

Do you use the Type 29 CPOE in the Type 29 CPOE?

Yes ☐ No ☐

Do you use the Type 30 CPOE in the Type 30 CPOE?

Yes ☐ No ☐

Do you use the Type 31 CPOE in the Type 31 CPOE?

Yes ☐ No ☐

Do you use the Type 32 CPOE in the Type 32 CPOE?

Yes ☐ No ☐

Do you use the Type 33 CPOE in the Type 33 CPOE?

Yes ☐ No ☐

Do you use the Type 34 CPOE in the Type 34 CPOE?

Yes ☐ No ☐

Do you use the Type 35 CPOE in the Type 35 CPOE?

Yes ☐ No ☐

Do you use the Type 36 CPOE in the Type 36 CPOE?

Yes ☐ No ☐

Do you use the Type 37 CPOE in the Type 37 CPOE?

Yes ☐ No ☐

Do you use the Type 38 CPOE in the Type 38 CPOE?

Yes ☐ No ☐

Do you use the Type 39 CPOE in the Type 39 CPOE?

Yes ☐ No ☐

Do you use the Type 40 CPOE in the Type 40 CPOE?

Yes ☐ No ☐

Do you use the Type 41 CPOE in the Type 41 CPOE?

Yes ☐ No ☐

Do you use the Type 42 CPOE in the Type 42 CPOE?

Yes ☐ No ☐

Do you use the Type 43 CPOE in the Type 43 CPOE?

Yes ☐ No ☐

Do you use the Type 44 CPOE in the Type 44 CPOE?

Yes ☐ No ☐

Do you use the Type 45 CPOE in the Type 45 CPOE?

Yes ☐ No ☐

Do you use the Type 46 CPOE in the Type 46 CPOE?

Yes ☐ No ☐

Do you use the Type 47 CPOE in the Type 47 CPOE?

Yes ☐ No ☐

Do you use the Type 48 CPOE in the Type 48 CPOE?

Yes ☐ No ☐

Do you use the Type 49 CPOE in the Type 49 CPOE?

Yes ☐ No ☐

Do you use the Type 50 CPOE in the Type 50 CPOE?

Yes ☐ No ☐

Do you use the Type 51 CPOE in the Type 51 CPOE?

Yes ☐ No ☐

Do you use the Type 52 CPOE in the Type 52 CPOE?

Yes ☐ No ☐

Do you use the Type 53 CPOE in the Type 53 CPOE?

Yes ☐ No ☐

Do you use the Type 54 CPOE in the Type 54 CPOE?

Yes ☐ No ☐

Do you use the Type 55 CPOE in the Type 55 CPOE?

Yes ☐ No ☐

Do you use the Type 56 CPOE in the Type 56 CPOE?

Yes ☐ No ☐

Do you use the Type 57 CPOE in the Type 57 CPOE?

Yes ☐ No ☐

Do you use the Type 58 CPOE in the Type 58 CPOE?

Yes ☐ No ☐

Do you use the Type 59 CPOE in the Type 59 CPOE?

Yes ☐ No ☐

Do you use the Type 60 CPOE in the Type 60 CPOE?

Yes ☐ No ☐

Do you use the Type 61 CPOE in the Type 61 CPOE?

Yes ☐ No ☐

Do you use the Type 62 CPOE in the Type 62 CPOE?

Yes ☐ No ☐

Do you use the Type 63 CPOE in the Type 63 CPOE?

Yes ☐ No ☐

Do you use the Type 64 CPOE in the Type 64 CPOE?

Yes ☐ No ☐

Do you use the Type 65 CPOE in the Type 65 CPOE?

Yes ☐ No ☐

Do you use the Type 66 CPOE in the Type 66 CPOE?

Yes ☐ No ☐

Do you use the Type 67 CPOE in the Type 67 CPOE?

Yes ☐ No ☐

Do you use the Type 68 CPOE in the Type 68 CPOE?

Yes ☐ No ☐

Do you use the Type 69 CPOE in the Type 69 CPOE?

Yes ☐ No ☐

Do you use the Type 70 CPOE in the Type 70 CPOE?

Yes ☐ No ☐

Do you use the Type 71 CPOE in the Type 71 CPOE?

Yes ☐ No ☐

Do you use the Type 72 CPOE in

[illegible]

- Assess Clinic Screening Services
- Assess Processes & Protocols
- Assess Staff Capacity & Training needs
- Plan your project!



Training



Team Training Supports Your Project Goals

- **Implementing a new screen?**
 - Why screening matters
 - Instrument scoring
 - Making referrals when risk is identified
- **Improving an existing process/service ?**
 - Quality improvement techniques
 - Orientation to new processes
- **Increasing completed referrals?**
 - Talking with families
 - Referral guides
 - BFH Family Resource Center



Implementation



Plan Do Study Act Cycles

Plan: identify a change to test and make a prediction

Do: conduct the test and collect data

Study: analyze data & summarize results

Act: Adapt - Adopt - Abandon

Plan-Do-Study-Act (PDSA) Worksheet

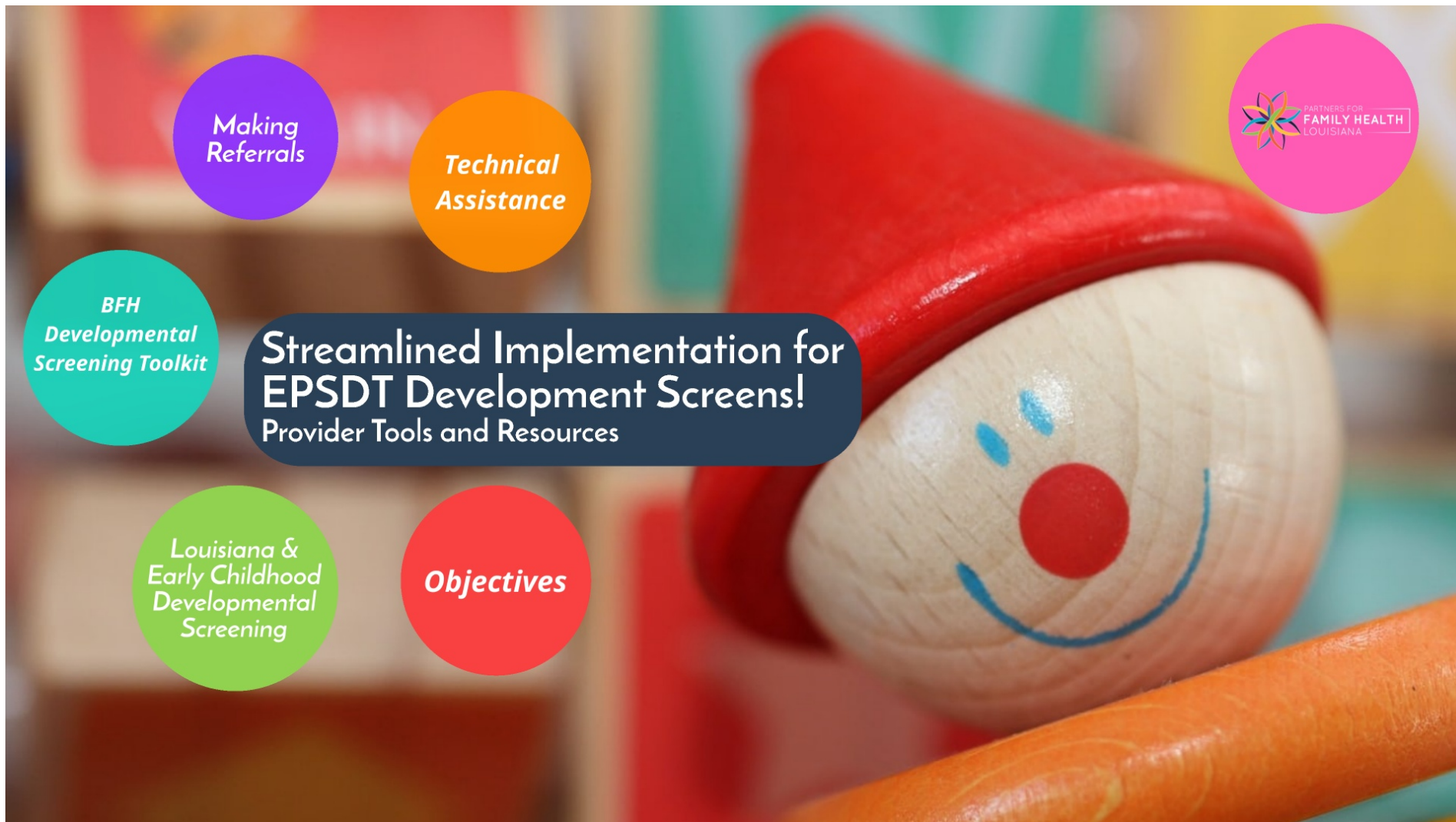
Use this worksheet to test out your developmental screening plan. A Plan-Do-Study-Act (PDSA) is a scientific method for testing and quality improvement (QI) plans. Doing a PDSA will help you test a change you wish to implement in your practice so you can identify what works best for your clinic workflow. Fill in the information below as you integrate changes into your clinic workflow. Reference the Developmental Screening Toolkit for more information.

Title: _____

Planned Test Duration: _____ Today's Date: _____

1. PLAN: Develop a test and make a prediction	2. DO: Conduct the test and collect data
DESCRIPTION OF TEST/TAKE Who: _____ When: _____ Where: _____ When: _____ PREDICTION _____ 3. STUDY: Analyze the data and summarize results ANALYZED DATA _____ RESULTS _____ COMPARE RESULTS TO PREDICTED OUTCOME _____	STEPS TAKEN _____ COLLECT DATA _____ 4. ACT: Follow changes for the next cycle ADAPT (write out changes to be made next time) _____ ADOPT (create a timeline for full implementation) _____ ABANDON _____





*Making
Referrals*

*Technical
Assistance*



*BFH
Developmental
Screening Toolkit*

Streamlined Implementation for EPSDT Development Screens!

Provider Tools and Resources

*Louisiana &
Early Childhood
Developmental
Screening*

Objectives

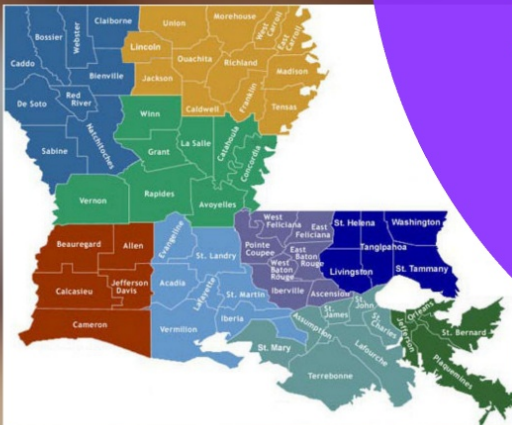
Second Half of Screening Practice...

**DS
Resource
Guides**

Where to refer and point families?

Developmental Screening Resource Guides

- General & Social Emotional Development
- Autism
- Family Wellness/Barriers to Health



<https://ldh.la.gov/index.cfm/page/4067>

Louisiana Developmental Screening Resources: 0-5 years

Autism Spectrum

Bienville, Bossier, Caddo, Claiborne, DeSoto, Natchitoches, Red River, Sabine, Webster Parishes

A screen that indicates risk is not a diagnosis! A screen that indicates risk means that further evaluations by a specialist are needed. Evaluations will help determine if a child needs early intervention services and supports.

Family Resources

Partners for Family Health: Find health resources and services offered by the Bureau of Family Health at partnersforfamilyhealth.org

Families Helping Families Region 7: Peer support and resource linkage for families in Northwest Louisiana, 1-877-226-4541, fhfregion7.org

Head Start/Early Head Start: Promotes school readiness for low-income families. Eligibility and enrollment information for Louisiana can be found at benefits.gov/benefit/616

GAPMAP Autism: Enter zip code to find local resources, gapmap.Stanford.edu

Mobile Applications

Turn everyday moments into brain building activities for children ages 0-5 years, joinvroom.org



Milestone Tracker: Track your children's milestones and share with teachers and doctors

Sesame Street and Autism
Interactive routine cards, storybooks, and videos



Recommended Resources

- **EarlySteps:** Intervention services for children 0-3 providing screening, assessments, and therapies. Contact 866-494-8900 or 318-741-7445, ldh.la.gov/index.cfm/directory/detail/676/satid/149
- **Specialist/Subspecialist Referral:** Provider locator tools are available on the Healthy Louisiana website, myplan.healthy.la.gov/home
- **Regional Resource Guides:** A comprehensive listing of pediatric and adolescent services and programs for each region of the state, ldh.la.gov/cshs
- **Easter Seals Louisiana:** Nonprofit healthcare organization for individuals living with a disability, easterseals.com/Louisiana
- **Exceptional Lives:** A website that helps families find services and apply for disability benefits, exceptionallives.org/louisiana
- **Northwest Louisiana Human Services District:** List of resources for relevant health services Northwest Louisiana, 318-676-5111, nlhsd.org
- **Behavioral Specialists of Louisiana:** Evaluations and services in Shreveport, behavioralspecialistsofla.com
- **LSU Shreveport Children's Center:** Evaluations in Shreveport, 318-813-2960, lsuhshreveport.edu
- **Center for Autism and Related Disorders:** Evaluations, services, and resources in Shreveport, centerforautism.com
- **Odyssey Foundation's Autism Resource Center:** Help with resources and referrals, odysseyfoundationla.org
- **Holy Angels' Autism Center:** Help families find services, laholyangels.org
- **Family Resource Center:** Provides linkage and system navigation for community resources, 504-896-1340, BFH-FamilyResourceCenter@la.gov

Public School System: Pupil Appraisal and Child Find

BIENVILLE 318-263-9416	BOSSIER 318-549-7337
CADDO 318-603-6700	CLAIBORNE 318-927-2496
DESOTO 318-872-6550	NATCHITOCHES 318-352-2358 ext 1182
RED RIVER 318-932-4081	SABINE 318-431-6030

<https://ldh.la.gov/index.cfm/page/4067>

Louisiana Developmental Screening Resources: 0-5 years

Autism Spectrum

Bienville, Bossier, Caddo, Claiborne, DeSoto, Natchitoches, Red River, Sabine, Webster Parishes

A screen that indicates risk is not a diagnosis! A screen that indicates risk means that further evaluations by a specialist are needed. Evaluations will help determine if a child needs early intervention services and supports.

Resources

For Family Health: Find health and services offered by the Family Health at familyhealth.org

Mobile Applications

Turn everyday moments into brain building activities for children ages 0-5 years



Recommended Resources

- **EarlySteps:** Intervention services for children 0 assessments, and therapies. Contact 866-494-8 ldh.la.gov/index.cfm/directory/detail/676/ca
- **Specialist/Subspecialist Referral:** Provider located on the Healthy Louisiana website, myplan.healthy.la.gov

Family Resources

Partners for Family Health: Find health resources and services offered by the Bureau of Family Health at partnersforfamilyhealth.org

Families Helping Families Region 7: Peer support and resource linkage for families in Northwest Louisiana, 1-877-226-4541, fhfregion7.org

Head Start/Early Head Start: Promotes school readiness for low-income families. Eligibility and enrollment information for Louisiana can be found at benefits.gov/benefit/616

GAPMAP Autism: Enter zip code to find local resources, gapmap.Stanford.edu

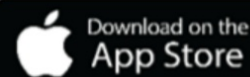
Mobile Applications

Turn everyday moments into brain building activities for children ages 0-5 years, joinvroom.org



Milestone Tracker: Track your children's milestones and share with teachers and doctors

Sesame Street and Autism
Interactive routine cards, storybooks, and videos



ns



Tracker: Track
children's
and share
and



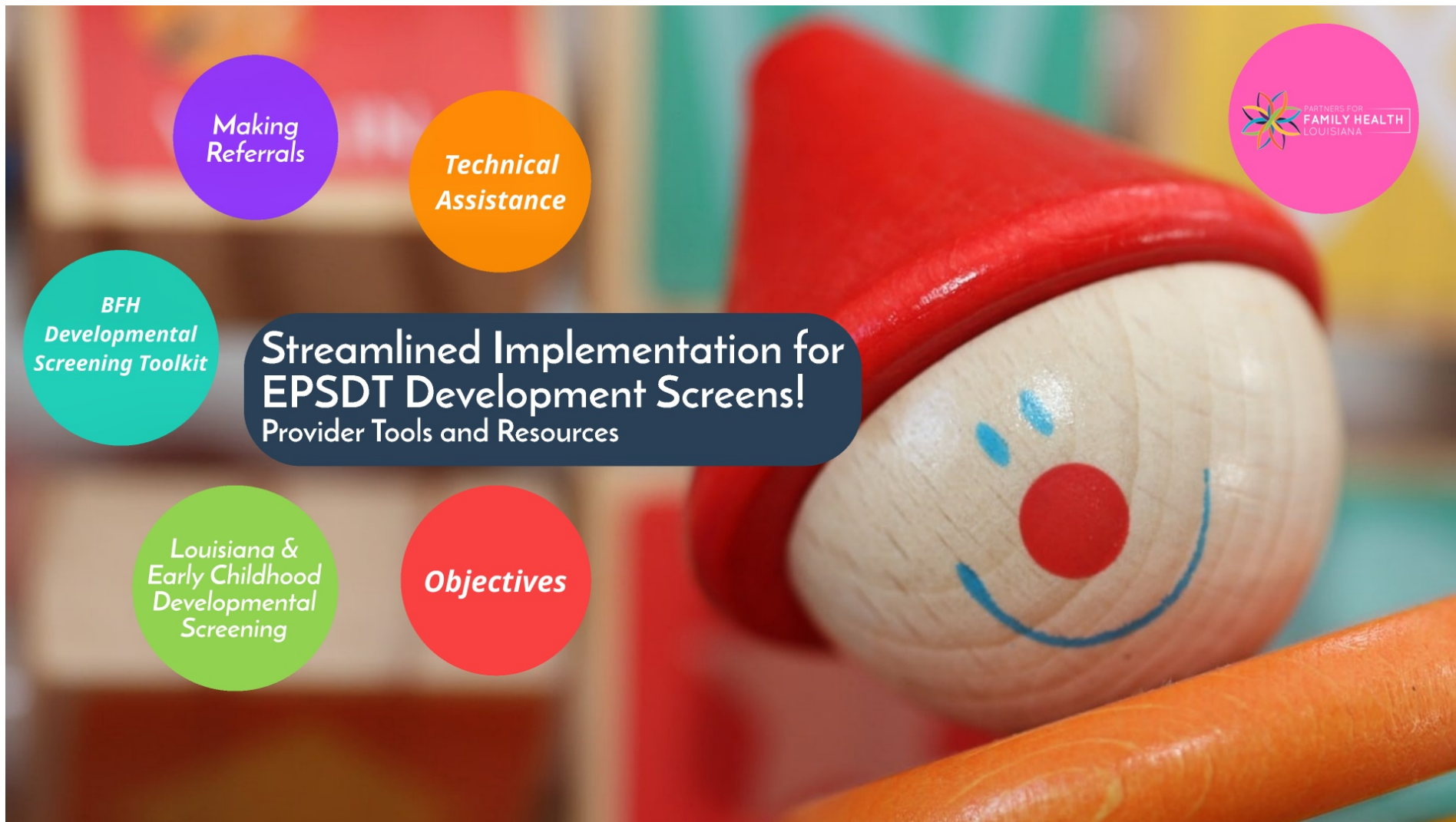
GET IT ON
Google Play

Recommended Resources

- **EarlySteps:** Intervention services for children 0-3 providing screening, assessments, and therapies. Contact **866-494-8900** or **318-741-7445**, ldh.la.gov/index.cfm/directory/detail/676/catid/149
- **Specialist/Subspecialist Referral:** Provider locator tools are available on the Healthy Louisiana website, myplan.healthy.la.gov/home
- **Regional Resource Guides:** A comprehensive listing of pediatric and adolescent services and programs for each region of the state, ldh.la.gov/cshs
- **Easter Seals Louisiana:** Nonprofit healthcare organization for individuals living with a disability, easterseals.com/Louisiana
- **Exceptional Lives:** A website that helps families find services and apply for disability benefits, exceptionallives.org/louisiana
- **Northwest Louisiana Human Services District:** List of resources for relevant health services Northwest Louisiana, **318-676-5111**, nlhsd.org
- **Behavioral Specialists of Louisiana:** Evaluations and services in Shreveport, behavioralspecialistsofla.com
- **LSU Shreveport Children's Center:** Evaluations in Shreveport, **318-813-2960**, lsuhscshreveport.edu
- **Center for Autism and Related Disorders:** Evaluations, services, and resources in Shreveport, centerforautism.com
- **Odyssey Foundation's Autism Resource Center:** Help with resources and referrals, odysseyfoundationla.org
- **Holy Angels' Autism Center:** Help families find services, laholyangels.org
- **Family Resource Center:** Provides linkage and system navigation for community resources, **504-896-1340**, BFH-FamilyResourceCenter@la.gov

Public School System: Pupil Appraisal and Child Find

<u>BIENVILLE</u> 318-263-9416	<u>BOSSIER</u> 318-549-7337
<u>CADDO</u> 318-603-6700	<u>CLAIBORNE</u> 318-927-2496
<u>DESOTO</u> 318-872-6550	<u>NATCHITOCHES</u> 318-352-2358 ext 1182
<u>RED RIVER</u> 318-932-4081	<u>SABINE</u> 318-431-6030
<u>WEBSTER</u> 318-377-7052	



*Making
Referrals*

*Technical
Assistance*



*BFH
Developmental
Screening Toolkit*

Streamlined Implementation for EPSDT Development Screens!

Provider Tools and Resources

*Louisiana &
Early Childhood
Developmental
Screening*

Objectives

Technical Assistance (TA)

Questions

Bureau of Family Health

- Customized TA, Title V supported, no cost to practices!
- Online toolkit, trainings, state specific resources

American Academy of Pediatrics

- Screening Time/STAR Center (Screening TA and Resources)
- Virtual Library of tools and resources
- Simulations/trainings

Louisiana Department of Health • Office of Public Health • Bureau of Family Health

Implementation Training & Support

The Bureau of Family Health offers trainings and resources to Louisiana providers that can help enhance and expand their clinical services. Our team of experts is available to develop a tailored plan to fulfill your clinic's needs, and can assist in-person or virtually to provide technical assistance. We use a quality improvement framework that helps embed continuous improvement into your practice. We provide trainings on the following topics:

- Developmental screening
- Care coordination
- Youth health transition

These trainings and resources are available at no cost. If you're interested in learning more, please complete the information below and email it to Development@la.gov. We will contact you to provide more information and schedule a training.

Step 1: Tell Us Your Interests

Check the following services you are interested in for each of the topic areas.

	Referral Resources	Tools to Use in Clinic	Implementation Training*
Developmental Screening			
Care Coordination			
Youth Health Transition			

*Implementation Training can be done in-person or virtually. Training includes:

- Project planning
- Staff training
- Process mapping
- Implementation Assistance

Step 2: Tell Us About Your Practice

Provide the following information about your clinic. We will contact you using your preferred method of communication.

Clinic Name: _____ Contact Name: _____

Address: _____ Contact's Role: _____

City: _____ Phone: _____

HIT System: _____ Email: _____

Clinic Owner: _____ Preference: ☐ Phone ☐ Email

DEPARTMENT OF HEALTH For more information, please contact the Developmental Screening Coordinator at 504-568-3524 or at Development@la.gov



Health

Title V

Best to practices!

Trainings, state

es

of Pediatrics

STAR Center

and Resources)

f tools and

nings



Louisiana Department of Health • Office of Public Health • Bureau of Family Health

Implementation Training & Support

The Bureau of Family Health offers trainings and resources to Louisiana providers that can help enhance and expand their clinical services. Our team of experts is available to develop a tailored plan to fulfill your clinic's needs, and can meet in-person or virtually to provide technical assistance. We use a quality improvement framework that helps embed continuous improvement into your practice. We provide trainings on the following topics:

- Developmental screening
- Care coordination
- Youth health transition

These trainings and resources are available at no cost. If you're interested in learning more, please complete the information below and email it to DevScreen@la.gov. We will contact you to provide more information and schedule a training.

Step 1: Tell Us Your Interests

Check the following services you are interested in for each of the topic areas.

	Referral Resources	Tools to Use in Clinic	Implementation Training*
Developmental Screening			
Care Coordination			
Youth Health Transition			

*Implementation Training can be done in-person or virtually. Training includes:

- Project planning
- Staff training
- Process mapping
- Implementation Assistance

Step 2: Tell Us About Your Practice

Provide the following information about your clinic. We will contact you using your preferred method of communication.

Clinic: _____	Contact Name: _____
Address: _____	Contact's Role: _____
City: _____	Phone: _____
EHR System: _____	Email: _____
Clinic Owner: _____	Preference: <input type="checkbox"/> Phone <input type="checkbox"/> Email



For more information, please contact the Developmental Screening Coordinator at 504-568-3504 or at DevScreen@la.gov

Questions



*Thank
You!*

Bureau of Family Health Provider Resource Links

- **LDH.LA.GOV/DevScreenToolkit**
- **PartnersforFamilyHealth.org**
- **Developmental Screening Toolkit Worksheets**
https://ldh.la.gov/assets/oph/Center-PHCH/Center-PH/cshs/Developmental_Screening/DS_Combined_Worksheets.pdf
- **Developmental Screening Referral Guides:**
<https://ldh.la.gov/index.cfm/page/4067>
- **BFH TA Options Form:**
https://ldh.la.gov/assets/oph/Center-PHCH/Center-PH/cshs/Developmental_Screening/ITS_Form.pdf