

COVID-19 Vaccine



OAAS-TNG-21-001
Issued January 26, 2021

[covidvaccine
.la.gov](https://covidvaccine.la.gov)



We need
you to
EDUCATE
&
HELP

Direct Service Workers (DSW)

- EDUCATE DSWs on the importance of receiving a vaccine and direct them HOW to get it.
- HELP DSWs remember to get their 2nd dose.

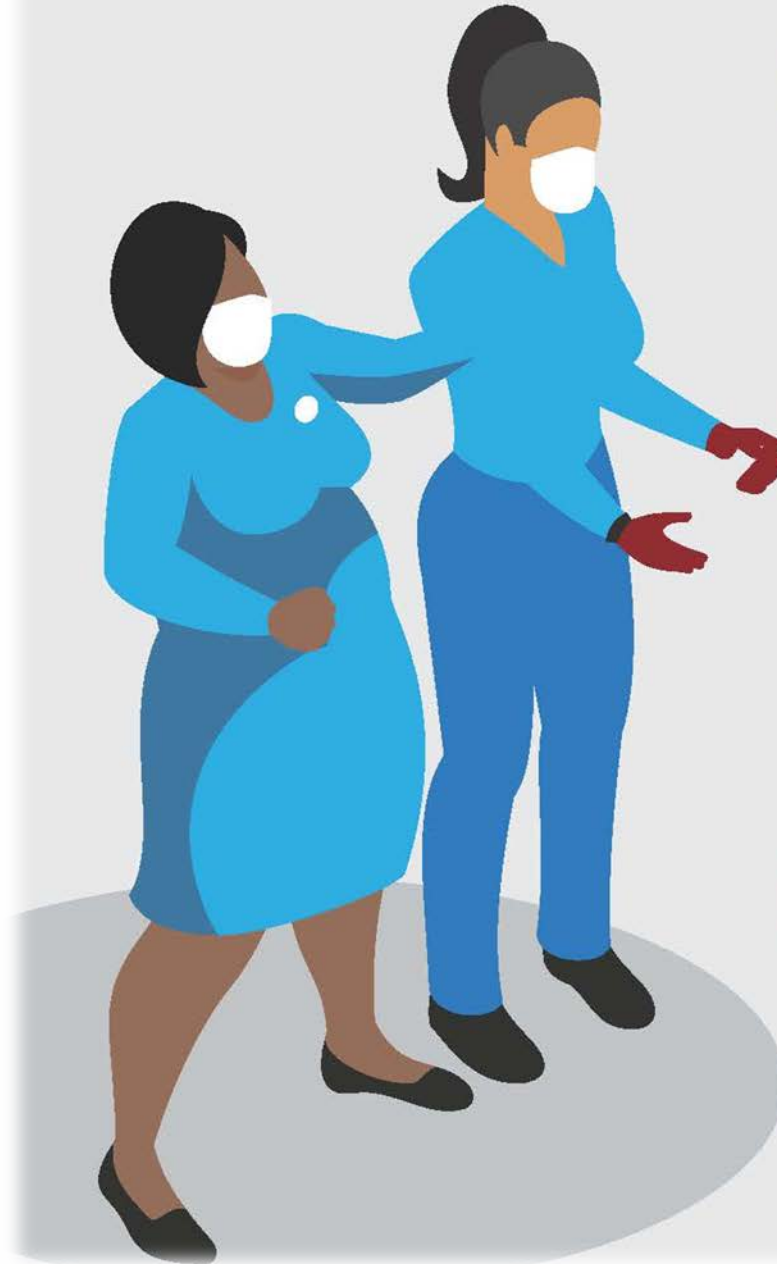
Participants

- EDUCATE participants on the importance of getting a vaccine and direct them HOW to get it.
- HELP participants schedule an appointment.
- HELP participants get to the appointment.
- HELP participants remember to get their 2nd dose.

Phase 1B, Tier 1 Covid-19 vaccines available for:

- Persons ages 70 years or older in the community,
- Outpatient clinic providers and clinic staff,
- Urgent care clinic providers and staff,
- Community care clinic providers and staff,
- Behavioral health providers and staff,
- Dialysis providers and patients,
- Home care providers, staff and recipients (including older and younger people with disabilities over the age of 16 who receive community or home-based care, as well as clients of home health agencies),
- Dental providers and staff, and
- Students, residents, faculty and staff of allied health schools (if not already receiving vaccine or in a plan to receive from their respective schools)

Three Reasons Why You Were Given Priority to Be Vaccinated Against COVID-19



1

You are a front line health care worker and at risk of being exposed to COVID-19.

2

You work with a vulnerable population for whom the consequences of COVID-19 are more serious, even fatal.

3

Protecting you also helps protect your friends and family, especially those who may be at higher risk for severe illness from COVID-19.



Scheduling a COVID Vaccine



Vaccinations

BY APPOINTMENT ONLY

- **Participants must contact a participating location and make an appointment at the location.**
- Do not arrive at a location without an appointment. Participants who arrive without an appointment will NOT be vaccinated.
- LDH cannot make appointments; only participating locations can.

Find the list of providers at covidvaccine.la.gov

Click on Vaccine Locations:

Select a provider from any parish.

Call the contact number to schedule an appointment.

Locations with no phone number listed are by
online appointment only.

For example:

Walgreens Pharmacy uses online scheduler
www.walgreens.com/findcare/vaccination/covid-19

How does the vaccine work?

- The COVID-19 vaccine does not contain a dead or a weakened virus that triggers an immune response.
- Instead, the COVID-19 vaccine contains a genetic instruction manual that tells your immune system how to respond and protect you from exposure to the actual virus.

*The technology used in the vaccines is not new.

How much will it cost to get vaccinated?

- While we remain in the pandemic, the federal government plans to ensure vaccines are made available to those in need without cost to the individual.

- A participant/provider must show proof they are receiving/providing home-based care or receive regular dialysis care in order to receive the vaccine.
- Forms of verification that may be acceptable include the person's Plan of Care for community and home-based services.



Resources for Vaccinators of HCBS Recipients

Samples of documents recipients can show when they are present for vaccination:

- List of HCBS Agencies- Workers Eligible for Vaccination
- HCBS Recipient Emergency Plan
- Request for Medical Eligibility Determination
- HCBS Comprehensive Plan of Care (POC)
- OAAS Plan of Care
- Provider Notice
- Backup Staffing Plan
- Personal Care Services Plan of Care
- Re-Assessment “Approval” or “Partial Denial”
- Initial Assessment Approval
- Proof of Eligibility- employed directly by people receiving HCBS

<https://ldh.la.gov/index.cfm/page/4118>

Acceptable Identification for Provider Vaccinators

Samples of documents providers can show when they are present for vaccination:

- Proof of employment such as:
 - Employee ID or name tag,
 - Paystub
 - Letter from employer,
 - Uniform,
 - Parking pass, or
 - Any other ID acceptable to the vaccine provider.

<https://ldh.la.gov/assets/oph/Center-CP/HANs/HANS21-06-COVID-19-Vaccine-Administration-Management.pdf>

COVID-19 Vaccine FAQs

FAQs about Long-Term
Care Pharmacy
Partnerships

Vaccine Fact Sheet
(What You Need to
Know)

Vaccine Recipient Q & A

COVID-19 Vaccine Frequently Asked Questions (FAQs) & more are available under Vaccine Communication Materials

Lead the way!

Encourage your co-workers, clients, family and friends to get vaccinated.

<https://youtu.be/GM2Ew6A7040>

Capital Area Human Services (CAHS) Executive Director Jan Laughinghouse documented receiving her vaccine in hopes to inspire others.

Learn more about the
COVID-19 vaccine at



COVIDVACCINE.LA.GOV



LOUISIANA
**DEPARTMENT OF
HEALTH**

*Reminder: Please promptly respond to all surveys distributed by OAAS & OCDD.

References & Resources:

- covidvaccine.la.gov
- <https://ldh.la.gov/index.cfm/page/4118>
- http://documents.statres.com/OAAS_COVID19_FAQ_20210108.pdf
- <https://ldh.la.gov/index.cfm/page/4109>
- https://uso2web.zoom.us/rec/play/eLkSwU4sF9avmMrU--_MYTVH1Nmm65VEeJEPPRXrnEht7w4duSZIR5eoZUPCwSzQQJAwkFYnAJw1qDDt.c-VZ2_MLjHlv2ont?continueMode=true&_x_zm_rtaid=O8D1bmlXRZioIPTiF6d51g.1611670357253.efc34e2e445dd5f02526134e07dc4b48&_x_zm_rhtaid=306
- <https://ldh.la.gov/assets/cphe/resources/OnePager.pdf>