

ECONOMIC STABILITY

Camille Conaway
*Executive Director –
Economic Independence*

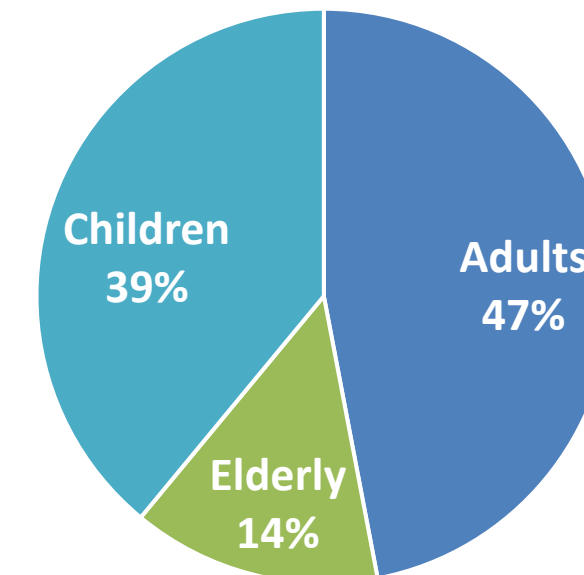
MISSION & ROLE

Our mission is to **provide stability and pathways out of poverty** to Louisiana's most vulnerable residents through the compassionate, accurate, and efficient **delivery of public benefits**.

- In December 2025, SNAP served 371,568 Louisiana households (**756,072 people**) with an average payment of **\$377.66** at a total cost of **\$1.78 billion**. The eligibility for and amount of SNAP benefits is determined primarily by household size and monthly income.
- **1 in 5 Louisiana households** is served by SNAP through more than **4,000 retailers**. LDH is strengthening our partnership with these critical stakeholders who ensure SNAP recipients have access to vital nutrition.
- The benefits are **100% federally funded** and delivered electronically through a debit-style card known as the Louisiana Purchase card.
- Our office also provided direct cash assistance to **8,400 low-income children** living with a parent (**\$13 million**) as well as an additional **3,000 low-income children** living with relatives (**\$14 million**).

SNAP Participants: 756,072

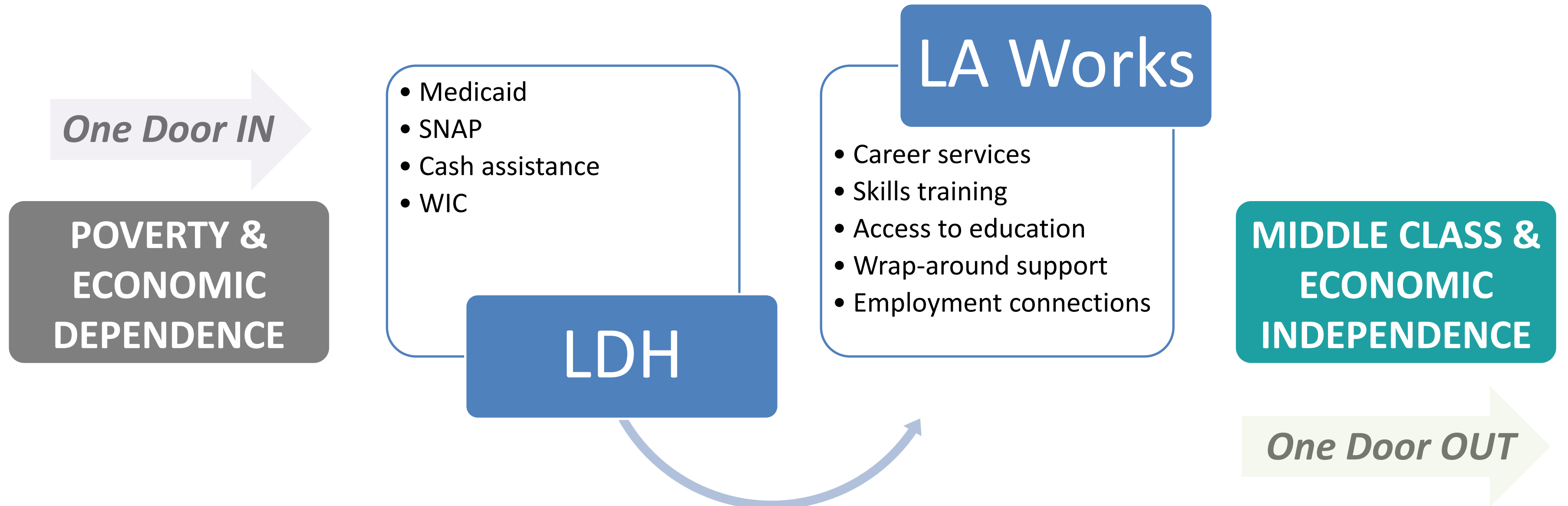
December 2025



46.9% of adults receiving SNAP have earned income.

Able-bodied SNAP recipients without dependents must meet mandatory work requirements to maintain eligibility for benefits. This month, **15,854** adults complied with this requirement (**89%**).

MISSION & ROLE



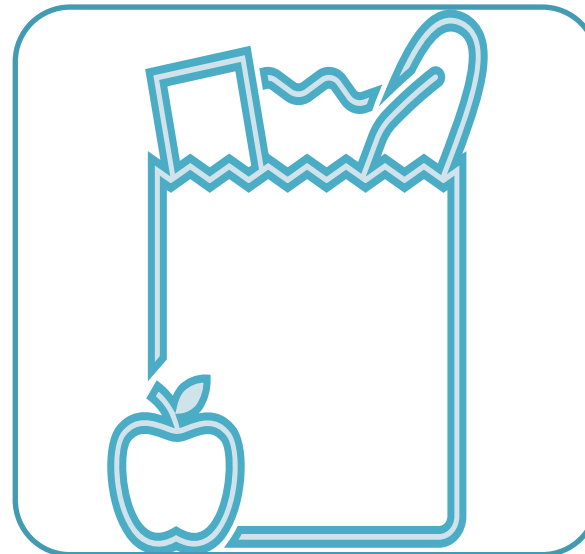
Louisiana should modernize and transform its workforce development and social services system through the implementation of an integrated administrative and service delivery model.

2025 PERFORMANCE



One Door Transition

Moved SNAP, FITAP, and KCSP from the Department of Children and Family Services to LDH so that food assistance and cash assistance can be better aligned with other public benefits, like Medicaid, in accordance with 2025 legislation.



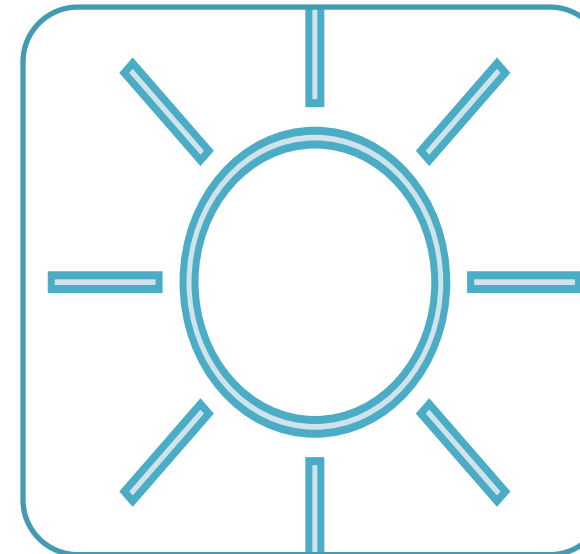
Government Shutdown/ LSNAP

Distributed nearly \$12 million to 192,892 households utilizing state funds to protect Louisiana's most vulnerable from losing critical food assistance during the federal government shutdown in November.



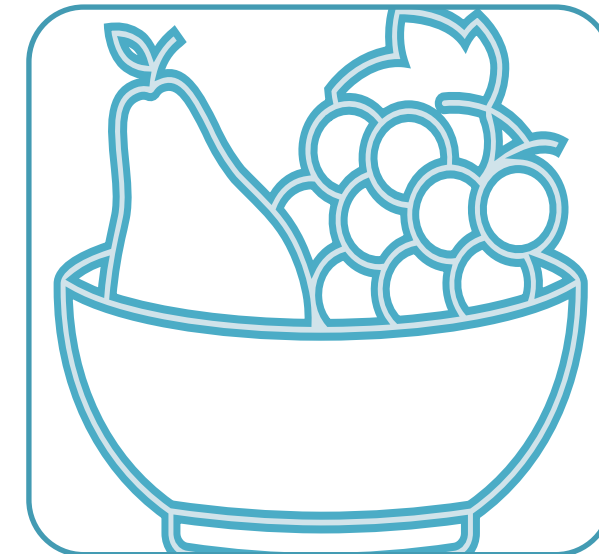
Quality & Timeliness

Ranked #6 by USDA Food Nutrition Services for timeliness of determinations and #12 for payment accuracy – yet there is more work to do given new federal laws on error rates.



SUN Bucks

Addressed the “summer hunger gap” for nearly 600,000 children in Louisiana who rely on school meals during the academic school year by issuing \$70.8 million in SUN Bucks benefits.



Louisiana Carrot Program

Launched in April in 6 parishes (now up to 11), providing \$731,919 in produce bonus benefits for 71,795 benefit recipients in 2025.

FINANCIAL STEWARDSHIP

- SNAP benefits are **100%** federally funded (**\$1.78 billion**).
- The administration of SNAP is **shared 50/50** with the federal and state government (**\$337 million** estimated in FY 27)
- HR 1 increased the state share next year to **75/25**.



**Earnings Verification
Support Grant**



**SUN Bucks
Technology Grant**



**Removal of
unnecessary
physical assets**



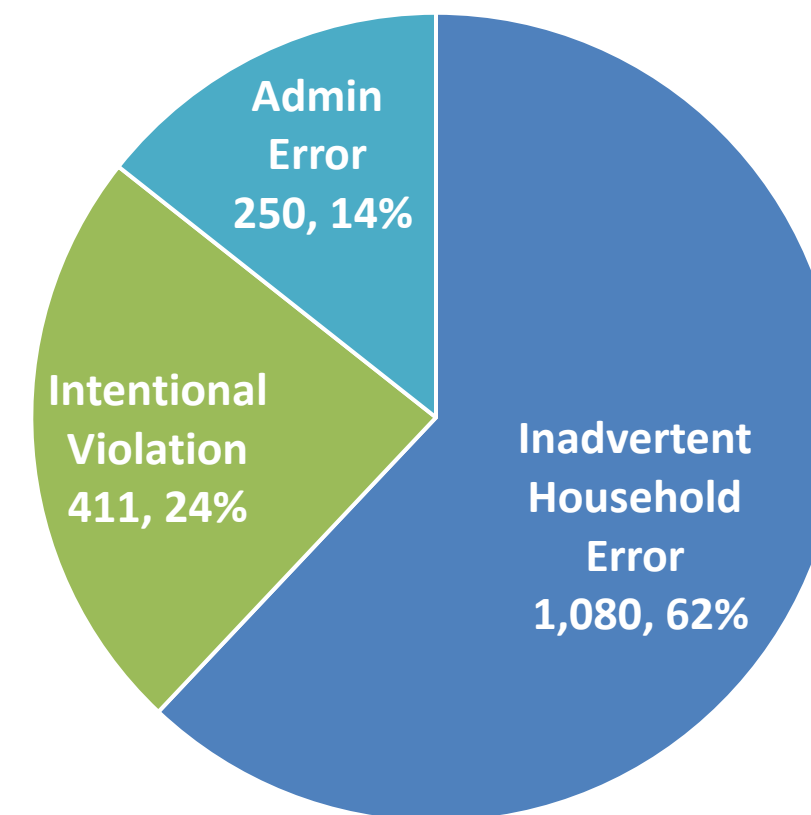
**Lowering cost
of vendors**

FINANCIAL STEWARDSHIP

Fighting Fraud and Improving Recovery Efforts

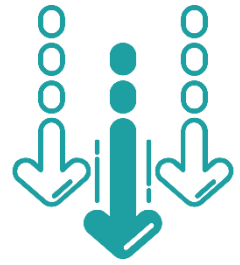
- Numerous reports are used to **detect and prevent the fraudulent receipt of benefits** issued by LDH, such as:
 - Vital records
 - National prisoner match
 - Out-of-state usage
 - Multiple card replacements
 - High balance reports
 - High SNAP purchases reports
- Complaints are also filed from USDA whistleblowers, legislators, the fraud hotline, and referrals from state staff.
- If fraud is suspected through these reports or from complaints, investigators are assigned to the case and a claim is established if warranted or referred to law enforcement.

2025 SNAP Completed Claims: 1,741



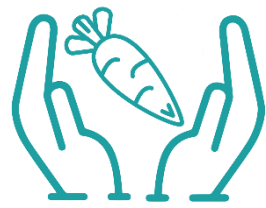
- Recipients are responsible for **full repayment of funds** and are **disqualified if applicable**.
- The LDH SNAP Fraud Unit recouped **\$3.4 million** in 2025.

2026 STRATEGIES & PRIORITIES



Goal 1: Reduce payment error rate

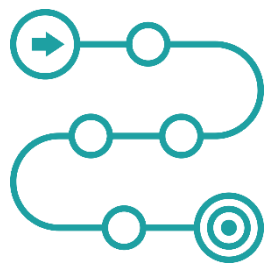
Reduce the SNAP payment error rate to **below 6%** by Q4 of 2026, avoiding a **\$95 million** State General Fund cost share.



Goal 2: Increase the amount of healthy food purchased with SNAP benefits

Increase the amount of healthy food purchased with SNAP benefits by:

- **Prohibiting** the purchase of candy, soft drinks, and energy drinks (2/18/26); and
- **Doubling** the Louisiana Carrot Program participation by Q4 of 2026.



Goal 3: Establish a data-driven roadmap for Project One Door

Establish a **data-driven roadmap** for Project One Door, integrating Medicaid and SNAP under the LDH umbrella and forging improved coordination with Louisiana Works.



SNAP Retailer Summit

RESIDENT IMPACT & ENGAGEMENT



**Provide
access to
nutrition**



**Keep
families
together**



**Support
transitions to
economic
independence**

RESIDENT IMPACT & ENGAGEMENT



*Mr. Godfrey with Ms. Jones,
LDH liaison to America's Job Center (Hammond)*

Johnny Godfrey had experienced a traumatic life event in the loss of his mother. He encountered LDH and America's Job Center staff when sleeping on a bench outside their office in Hammond.

This location is a Project One Door pilot where LDH and Louisiana Works support clients together.

In this case, Mr. Godfrey applied for and received SNAP and also received career advice and enrolled in truck driving school with financial support from LA Works. **He has since completed his CDL and is a full-time cross-country truck driver and has exited the SNAP program.**

Mr. Godfrey recently visited with the LDH and America's Job Center staff to check in and is doing well.

LDH ANNUAL SHAREHOLDER MEETING | JANUARY 21

THANK YOU

Camille Conaway
*Executive Director –
Economic Independence*