



LOUISIANA DEPT. OF HEALTH & HOSPITALS

Medicaid Eligibility Data System

Internal Design: Error

Suspense

Table of Contents

DOCUMENT INFORMATION	4
REVISION SUMMARY	4
ERROR SUSPENSE	5
OVERVIEW	5
STATUSES	6
ERROR SUSPENSE DIALOGS	8
ERROR SUSPENSE BROWSE.....	8
ERROR SUSPENSE MAINTENANCE	9
Screen 1	9
Field Descriptions.....	9
<i>External Data Panel</i>	10
Field Descriptions.....	10
EXTERNAL DATA PURGE (MEIEXTZ)	12
VOLUMES/FREQUENCY.....	12
<i>MEM0190 – External Data File Purge Batch Process</i>	12
SYSTEM TABLES.....	12
Run Control	12
<i>Program Logic</i>	12
<i>Reports Generated</i>	12
ERROR SUSPENSE ISSUES / QUESTIONS	14

Document Information

Created for: Louisiana Dept. of Health & Hospitals
Project Name: Medicaid Eligibility Data System
Project Abbreviation: MEDS
Document Title: Internal Design: Error Suspense
Document Subject:
Revision Number: 12 (incremented each time the document is saved)
Status: Final
Last Saved: Dec 16, 2011 03:24:00 PM
Printed: Dec 16, 2011 03:24:00 PM
Comments:
Document Template: RedManeSpec_W2000.dot

Revision Summary

The following revisions have been made to the document since it was first published:

Date	Description of Change	By
4/30/2003	Revised with RedMane template	M. Smutko

Error Suspense

Overview

Error Suspense is a facility providing access to external data records that have failed to pass validation checks. In the current design of MEDS, the L'AMI and SDX interfaces will utilize the Error Suspense facility. The basic objectives of the Error Suspense facility are to:

- Make MEDS users aware of defective records originating in external systems
- Present external data in a form which allows users to determine appropriate action
- Allow MEDS users to indicate the type of resolution necessary for each record

While each interface's design will determine whether pre-validation and validated records are stored in the MEDS database, any interface utilizing the Error Suspense facility must store invalid records in the appropriate files. The overall process then becomes:

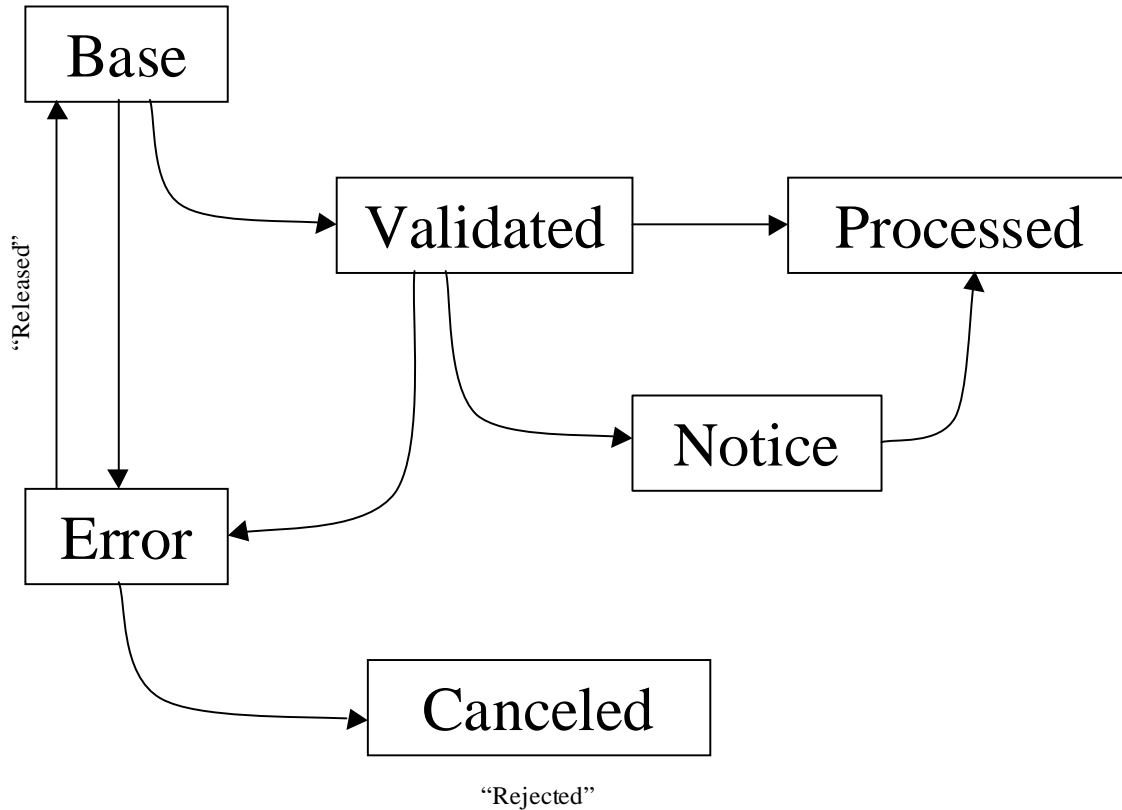
- An invalid record is identified by the interface and added to the database.
- The interface creates a workflow entry for the appropriate group notifying them that errors were found during the current run.
- One or more MEDS users review the Error Suspense dialog and find the offending record.
- Based on the type of error and why the validation failed, two courses of action are available:
 - If there is a data inconsistency in the MEDS system (e.g., table out of sync), corrective action is taken in MEDS and the record is released for re-processing.
 - If there are data integrity issues in the originating system, a request can be made to correct the information there, re-send the transaction (or its current form), and the original error record will be rejected.
- Released records that are eventually validated and processed successfully would then be removed from the database as a matter of course. Rejected records would remain indefinitely to provide an audit trail.

Note that no updates to the external data itself are allowed – only the disposition of the transaction may be affected.

In the case of the L'AMI interface, the user(s) resolving errors will be located in the state offices. Other interfaces may require notifying workers in the parish office responsible. See the External Design document on Common Facilities (Part 5) for more information on workflow entries and how they are routed.

Statutes

Error Suspense States



Status	Code	Description
Base	B	Original state of record waiting to be processed. Also used for records error suspended, then released.
Validated	V	Records that have successfully passed validations.
Notice	N	Records for which client notices must be printed.
Processed	Blank	Successfully processed records. These will be deleted periodically.
Error	E	Records in error suspense (failed validations).
Canceled	C	Records not to be applied as updates to MEDS, based on a manual inspection.

Suspended	S	When a Lami record is in error other records on that case and subsequent changes for that record are put in suspended status.
-----------	---	---

Error Suspense Dialogs

Error Suspense Browse

This is the browse module that supports the Error Suspense Maintenance function defined in this document. It would allow the display of all error records (filtered by process – L'AMI / SDX - if desired) that have not yet been resolved.

```

TRAN          *** M.E.D.SYSTEM ***          04/30/99
PROGRAM      - ERROR SUSPENSE BROWSE -      12:13:13  2>

Status Ext Sys  Ext Num  Process Id Run Num  Changed By Change Date/Time
=====
E   LAMI      3121   LAMI      108
E   LAMI      3192   LAMI      108
E   LASE      2004   LAMI      673
E   LASE      2987   LAMI      674
E   SDX       10003  SDX       25
E   SDX       10123  SDX       44

          *** END OF DATA ***

External System: ____ Display Suspended / Canceled Records: N
Enter-PF1---PF2---PF3---PF4---PF5---PF6---PF7---PF8---PF9---PF10---PF11---PF12B
      Help Menu End Quit Flip
Position Cursor and Press Enter to Display Record

```

The same dialog can also be used to display previously canceled transactions.

```

TRAN          *** M.E.D.SYSTEM ***          04/30/99
PROGRAM      - ERROR SUSPENSE BROWSE -      12:13:13  2>

Status Ext Sys  Ext Num  Process Id Run Num  Changed By Change Date / Time
=====
C   LAMI      3121   LAMI      108   JCARMOUC  08/08/1998 11:21:44
C   LAMI      3192   LAMI      108   JCARMOUC  08/08/1998 11:22:50
C   LAMI      3204   LAMI      121   MWHITESI  08/25/1998 09:15:13
C   LAMI      3287   LAMI      122   MWHITESI  08/26/1998 14:32:16
C   LAMI      3304   LAMI      135   MWHITESI  09/15/1998 08:08:08
E   LAMI      4003   LAMI      224
E   LAMI      4123   LAMI      225
S   LAMI      4124   LAMI      225
S   LAMI      4125   LAMI      225

          *** END OF DATA ***

External System: LAMI Display Suspended / Canceled Records: Y
Enter-PF1---PF2---PF3---PF4---PF5---PF6---PF7---PF8---PF9---PF10---PF11---PF12B
      Help Menu End Quit Flip
Position Cursor and Press Enter to Display Record

```


Error Suspense Maintenance

This is the user interface module that supports the Error Suspense Maintenance function.

Screen 1

```

ERROR                               *** M.E.D.SYSTEM ***                12/13/98
MEIEXDF                             ERROR SUSPENSE MAINTENANCE          04:30:11 3>

*Action                             : _ (B,C,D,M,N)
*EXTERNAL DATA NUMBER:             _____
*External System                     : XXXXXXXX
Process ID                           : XXXXXXXX
Case ID                              : XXXXXXXXXXXXXXXX
Run Number                           : 99999999
Error Suspense                       : X
Status                               : X XXXXXXXXXXXXXXXX
Canceled By                          : XXXXXXXX
Cancel Date                          : XX/XX/XXXX
Cancel Time                          : 99:99:99
MEDS Person Number                   : 99999999999999

Enter-PF1---PF2---PF3---PF4---PF5---PF6---PF7---PF8---PF9---PF10---PF11---PF12B
      Help  Menu  End   Quit
                Left  Right
Message Line ...

```

Field Descriptions

EXTERNAL DATA NUMBER (N13)

Unique identifier for the external data record. The system automatically assigns these numbers when the data is brought into the system.

External System (A8)

Identifies the source system for this record (e.g., LAMI, SDX, LASES). Display only.

Process Id (A8)

Name of the batch process responsible for creating this record. Used to access run control information. Display only.

Case Id (A13)

External system's identifier for the record - SSN for SDX records, Lami CID for Lami records.

Run Number (N8)

Sequence number of specific batch process run which created this record. Used to access run control information. Display only.

Error Suspense

This is a 'moreable' consisting of the following fields: Error Message (A60) describing the validation error that placed the transaction into error suspense, Error Field (A32) associated with the error, Error Value (A60) associated with the error.


```

Message Line ...
TRAN                *** M.E.D.SYSTEM ***                12/13/98
PROGRAM             - ERROR SUSPENSE MAINTENANCE -        04:30:11

*Action            : _ (B,C,D,M,N)
*EXT DATA NUMBER: _____
LAMI CID           : 123456789                          BIRTH DATE        : 33/33/3333
LAMI PID           : 198765432                          DEATH DATE        : 44/44/4444
FIRST NAME /MI    : AAAAAAAAAAAAAAAAAAAAAA B           PARISH OF RES     : DD
LAST NAME          : CCCCCCCCCCCCCCCCCCCCCC           CLOSURE CODE      : PP
ADDRESS 1         : FFFFFFFFFFFFFFFFFFFFFFFFFF         CASE STATUS       : NN
ADDRESS 2         : GGGGGGGGGGGGGGGGGGGGGGGGGGGGG    CASE DATE         : 88/88/8888
CITY              : HHHHHHHHHHHHHHHHHHHHHH           PARENT INDIC     : Y
STATE / ZIP       : II JJJJJJJJJ                       RELN TO CLIENT    : XX
PHONE             : RRRRRRRRRR                         SSN               : 333333333
TITLE             : QQQ                                  SSN VERIF        : 0
MAIDEN NAME       : MMMMMMMMMMMMMMMMMMMMMMMM          SEX / RACE        : K / L
APPLIC DATE       : 55/55/5555                         MARITAL STATUS    : X
CERT FROM         : 66/66/6666 TO: 77/77/7777         INCL / RSN CODE   : 11 / 22
MBR ADD           : 99/99/9999 END: 00/00/0000         GROSS EARNND     : 11111111.11
COUNT UNEARN     : 22222222.22                       LAMI RESOURCES    : 33333333.33
Enter-PF1---PF2---PF3---PF4---PF5---PF6---PF7---PF8---PF9---PF10---PF11---PF12
      Help Menu End Quit Flip                          Left Rght

```

External Data Purge (MEIEXTZ)

This program will read the External Data file and delete all records with 'Processed' status that are over 6 months old.

Volumes/Frequency

MEM0190 – External Data File Purge Batch Process

Monthly run.

System Tables

Run Control

Process ID	Description
EXTPURGE	External Data Purge (LAMI & SDX).

Program Logic

Restart Processing

*Retrieve Run Control information (Copycode MEXRUNC0).
Restart data include data and count of records deleted.*

Main Program

Calculate the date 6 months ago from the current date.

Read the External Data file physically

 Accept all records with status = 'P' (processed).

 If Update Date is earlier than 6 months ago
 Delete the record.

 End If

End Read

Reports Generated

Control Report

Reports the total processed records deleted, total processed records remaining on file and total records of other statuses. If a record with an invalid status is encountered it will be listed on this report also.

MEIEXTZ
MM/DD/YYYY
MEM0190

LOUISIANA DEPARTMENT OF HEALTH AND HOSPITALS
BUREAU OF HEALTH SERVICES FINANCING

00:00 PM

JOB09999

LAMI/SDX EXTERNAL DATA RESET

Page: 1

Run Number : 99999999

Total Processed records deleted from file: 999999999
Total Processed records left on file : 999999999
Total records with valid status on file : 999999999
Total records with invalid status on file: 999999999

*** End of Report ***

Error Suspense Issues / Questions

Nbr	Description	Date	Status	Assigned To
1	Should a workflow entry be created when new errors are found during a LAMI process? Who will they be sent to?	8/19/99	Open	Bill
	Yes- one workflow entry per run. Details of where user defined needs to be defined	9/1/99		
2	Can LASES use the Error Suspense dialogs	8/31/99	Closed	Tim
	Yes, however only the status change will be allowed			
3	How will multiple errors on one record be handled? Errors on separate records on subsequent updates that are queued up due to a previous error?	9/1/99	Open	Joan
4	Also, should queued up records be applied if the original error is canceled and a correct set of record will be coming?	9/1/99	Open	Joan