



MANAGING GENERATORS IN MSTAT

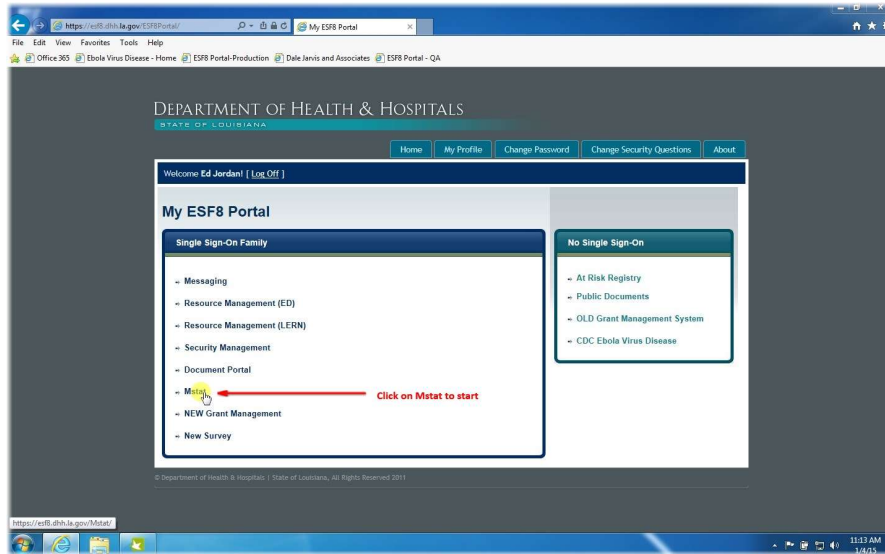
How to setup and manage generators in the Mstat application

August 13, 2018



Be prepared for the
2018 hurricane season!

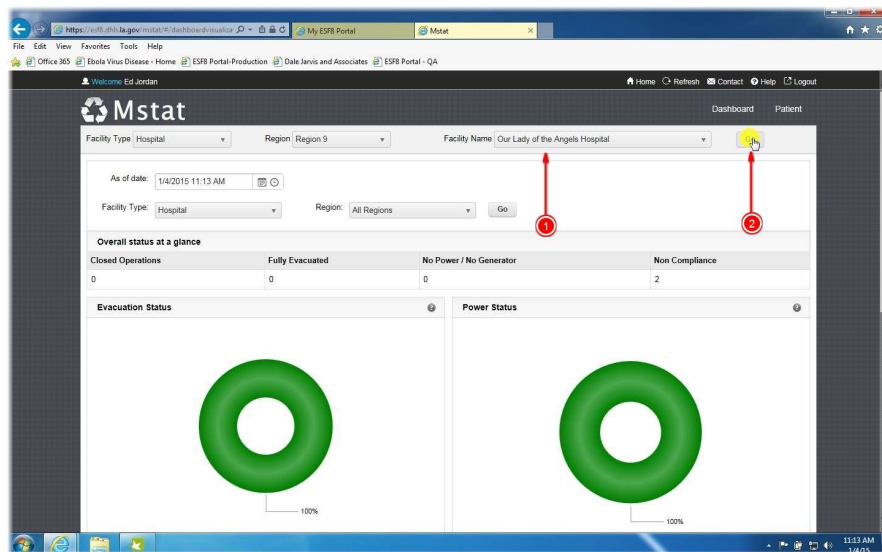
Log In to the
ESF 8 Portal and
Access Mstat



To start your process of managing the generators for your facility, click on Mstat.

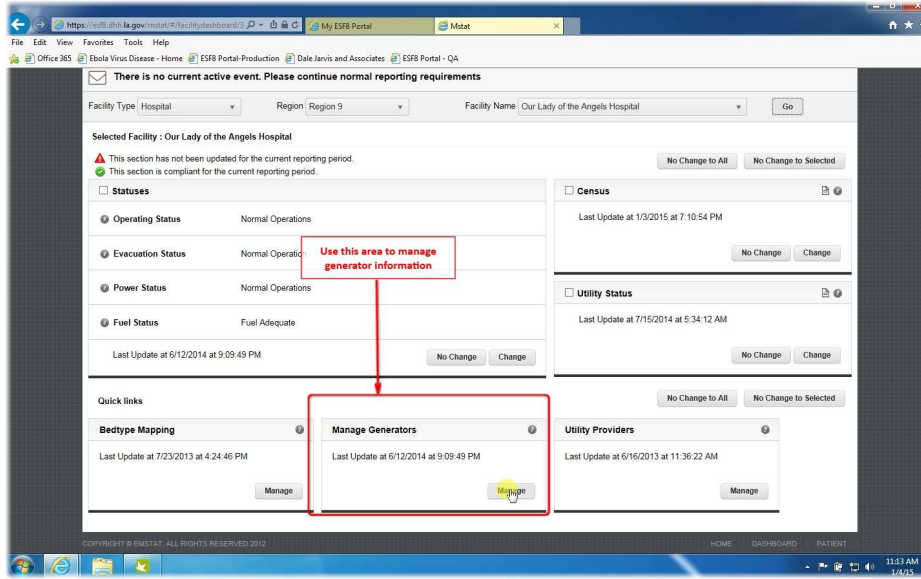
1. All generator information is accessed through Mstat
2. Power status during an event is accessed through Mstat

Multiple
Facilities



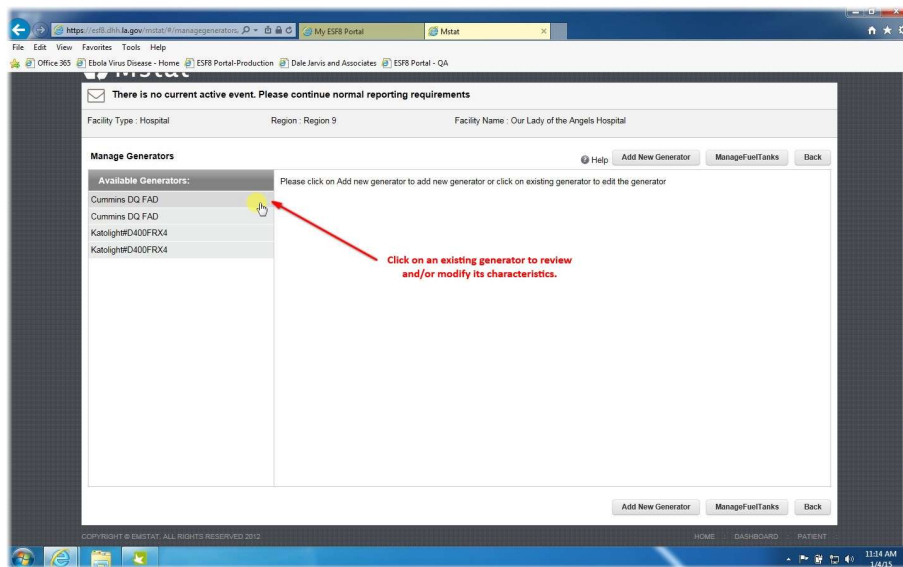
If you are assigned to multiple facilities, the opening view of Mstat will be a dashboard of the key indicators for your facility group. In order to get to a single facility to modify its status or add/change its generator information, select the facility from the "Facility Name" drop down and click "Go".

The Main Mstat Facility View



Once your facility is opened, click on the "Manage" button in the "Manage Generators" area at the bottom of the page. This is the section where you can change information on an existing generator or add a new one.

The Manage Generators View



In this view, you can:

1. Change the information for an existing generator or Fuel Tank by selecting a generator already listed
2. Add new generators and fuel tanks

Editing Generator Information

The screenshot shows the 'Manage Generators' interface for 'Our Lady of the Angels Hospital'. The form is titled 'Manage Generators' and is for a 'Cummins DQ FAD' generator. The form is divided into several sections:

- Generator Information (1):** Includes fields for Generator Name, Model, Operational status, Kilowatts, Burn Rate, Voltage, Phase, Burn Rate Unit, and Fuel Type.
- Fuel Tanks (2):** Includes a list of fuel tanks with checkboxes for selection.
- Services (3):** Includes a list of services with checkboxes for selection.
- Save (4):** A yellow circle highlights the 'Save' button, with a red arrow pointing to it.

For existing AND new generators each section above must be completed in order for your generator to show connectivity in the system. *If not, your facility may not be compliant during a mandatory reporting period when the application does not allow you to properly indicate facility power status.* The major sections are:

1. Generator information
2. Fuel Tank information
3. Services the generator powers in the facility

Once all sections have been completed with appropriate data, click the "Save" button.

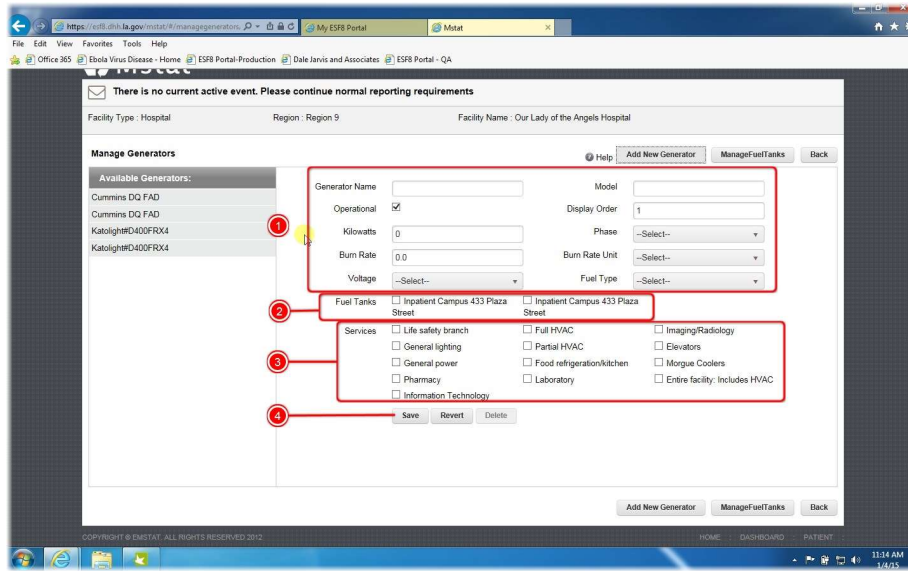
Adding a New Generator

The screenshot shows the 'Manage Generators' interface for 'Our Lady of the Angels Hospital'. The form is titled 'Manage Generators' and is for adding a new generator. The form is divided into several sections:

- Add New Generator:** A red arrow points to the 'Add New Generator' button.

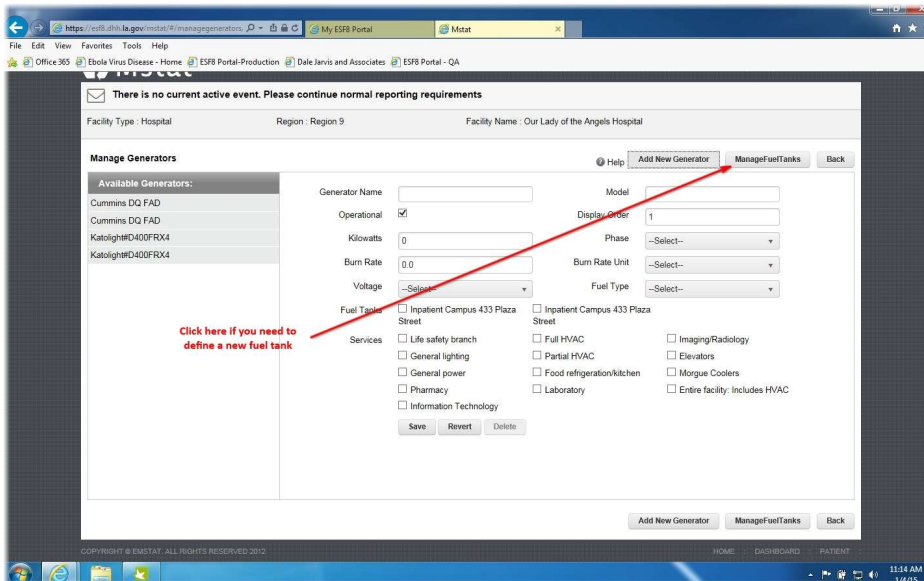
Click the "Add New Generator" button if you need to add a new capability. Repeat the same steps listed above.

Completing the "Add New Generator" Data



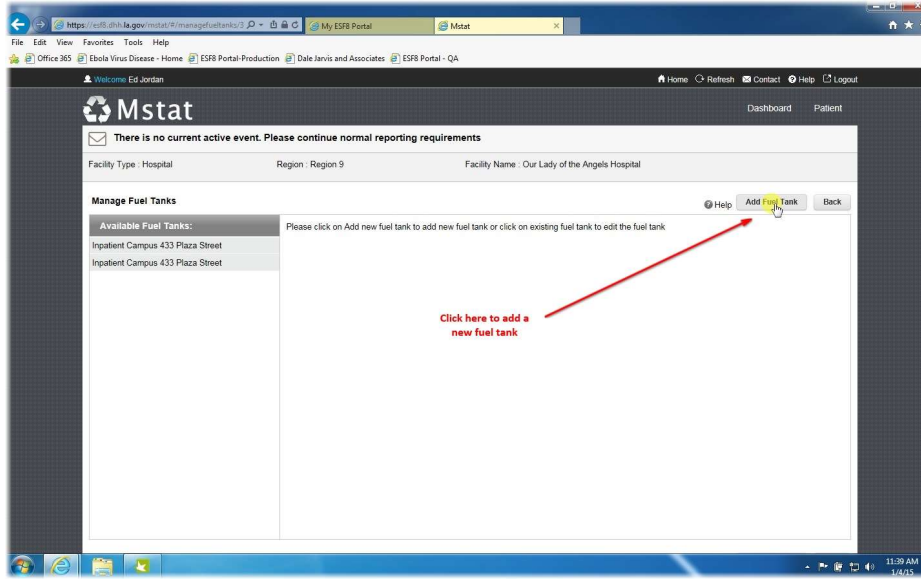
It is important to remember to complete section 3 which defines the services that each generator powers.

Manage Fuel Tanks



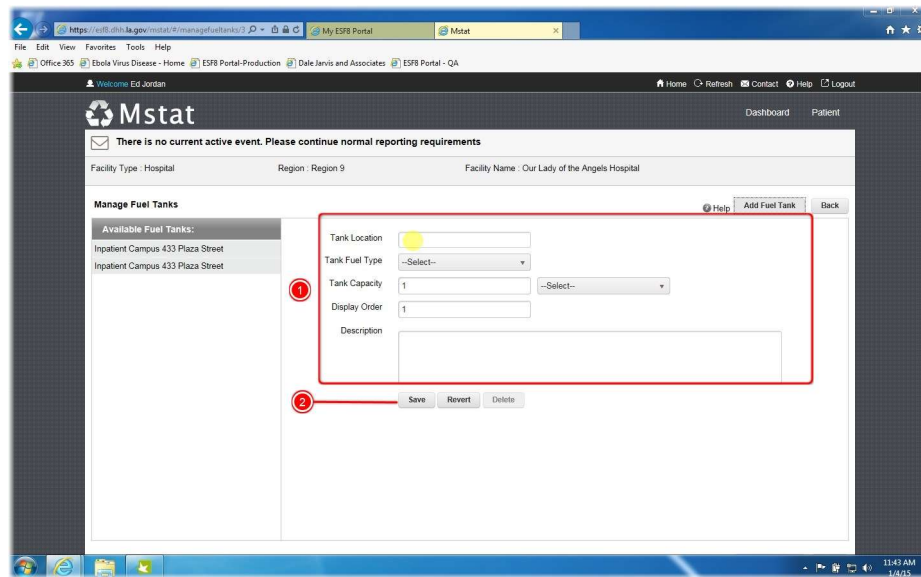
If the fuel tank for the new generator is not listed when you attempt to add the generator, first click on the "Manage Fuel Tanks" button as shown. This will open a new view in which you can add the new fuel source.

Adding a Fuel Tank



Once you open the Fuel Tank view, click on "Add Fuel Tank" to define the specific characteristics of the new fuel source.

The New Fuel Tank View



In this view, you must add the data for the new fuel tank. A short description specifying the location of the fuel tank is helpful during a response. The "Description" box can be used to add needed details as appropriate. After completing this section, click the "Save" button. Once this step is completed, the new fuel tank will appear in the list to choose from when adding the new generator.

Completing the Process

There is no current active event. Please continue normal reporting requirements

Facility Type: Hospital Region: Region 9 Facility Name: Our Lady of the Angels Hospital

Manage Status Types Last Update at 6/12/2014 at 9:09:49 PM

Operating Status: Normal Operations

- Normal Operations
- ED Only
- ED + Inpatient + Emergency Surgery
- Limited Operations
 - ED + Inpatient
 - Clinic

Indicate that you are on generator power

Power Status: Normal Operations

- Normal Operations
- Intermittent Power/On Generator
- Generator Power

Generator Status

At least one generator should be on

Generator name	Status
Cummins DQ FAD	<input type="radio"/> On <input checked="" type="radio"/> Off
Katolight#D40DFRX4	<input type="radio"/> On <input checked="" type="radio"/> Off

Turn on the appropriate generators. The application will prompt you to do this.

Evacuation Status: Normal Operation

- Normal Operation
- Partially Evacuated
- Return to Facility
- Shelter in Place
- Fully Evacuated

Fuel Status: Fuel Adequate

- Fuel Adequate
- Fuel Critically low - no supply
- Fuel Out
- Fuel Re-fueled
- Fuel Critically low - contacted supplier

If needed, indicate your fuel status

Comments

Noe at this time

Once you have ensured that all of your generator information is complete (by altering existing generator data or adding a new generator), you can now easily indicate that:

1. Your facility is on generator power during an emergency. This is done by clicking the "Change" button in the Status area, indicating that you are on generator power, and
2. Selecting the generators that are operational.
3. You can optionally indicate your current fuel status. Finally,
4. Remember to click "Save Changes" when you are complete.

Congratulations! You've completed a key task in getting ready for the 2018 hurricane season or any incident that may affect your facility or your community.