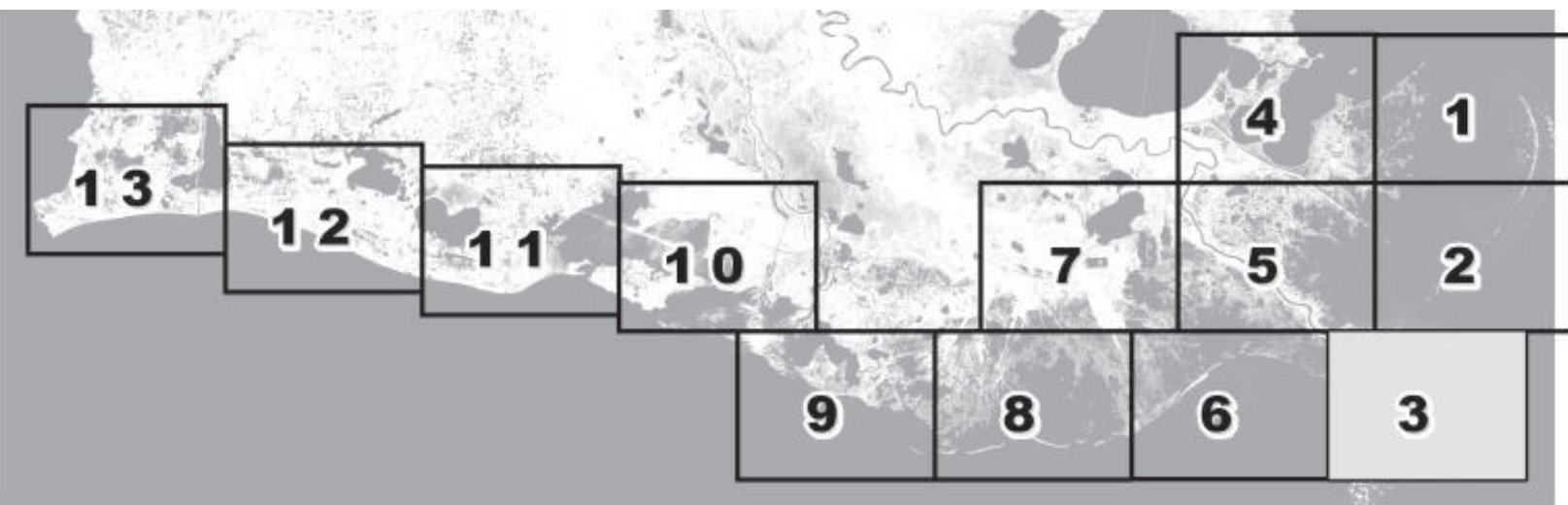


May August 2012 Re-Classification Line

Louisiana Department of
Health and Hospitals
Office of Public Health
Molluscan Shellfish Program

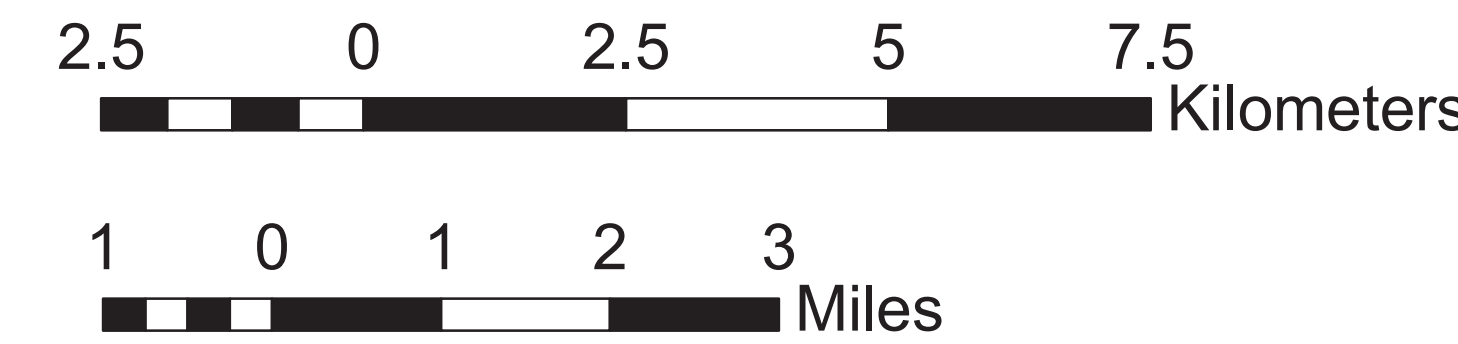
Basin Descriptions
Basin 02: Barataria - Mississippi River west to Bayou Lafourche
Basin 03: West Cove and Lower Calcasieu Lake Conditional Management Areas
Basin 04: Mississippi State line west to the Mississippi River
Basin 06: Atchafalaya River west to Freshwater Bayou Canal including Vermillion, East Cote Blanche, and West Cote Blanche Bays.
Basin 12: Terrebonne - Bayou Lafourche to the Atchafalaya River

Max Hrs from Harvest	36 Hrs	8 Hrs	1 Hr
Basin 02	Jan-Feb Dec	Mar-Apr Nov	May-Oct
Basin 03	Jan-Feb Dec	Mar-Apr Nov	Oct
Basin 04	Jan-Feb Dec	Mar-Apr Nov	May-Oct
Basin 06	Jan-Feb Dec	Mar-Apr Nov	May-Oct
Basin 12	Jan-Feb Dec	Mar-Apr Nov	May-Oct



Closure Line
Area Lines

Prohibited Areas



Scale 1:72,000

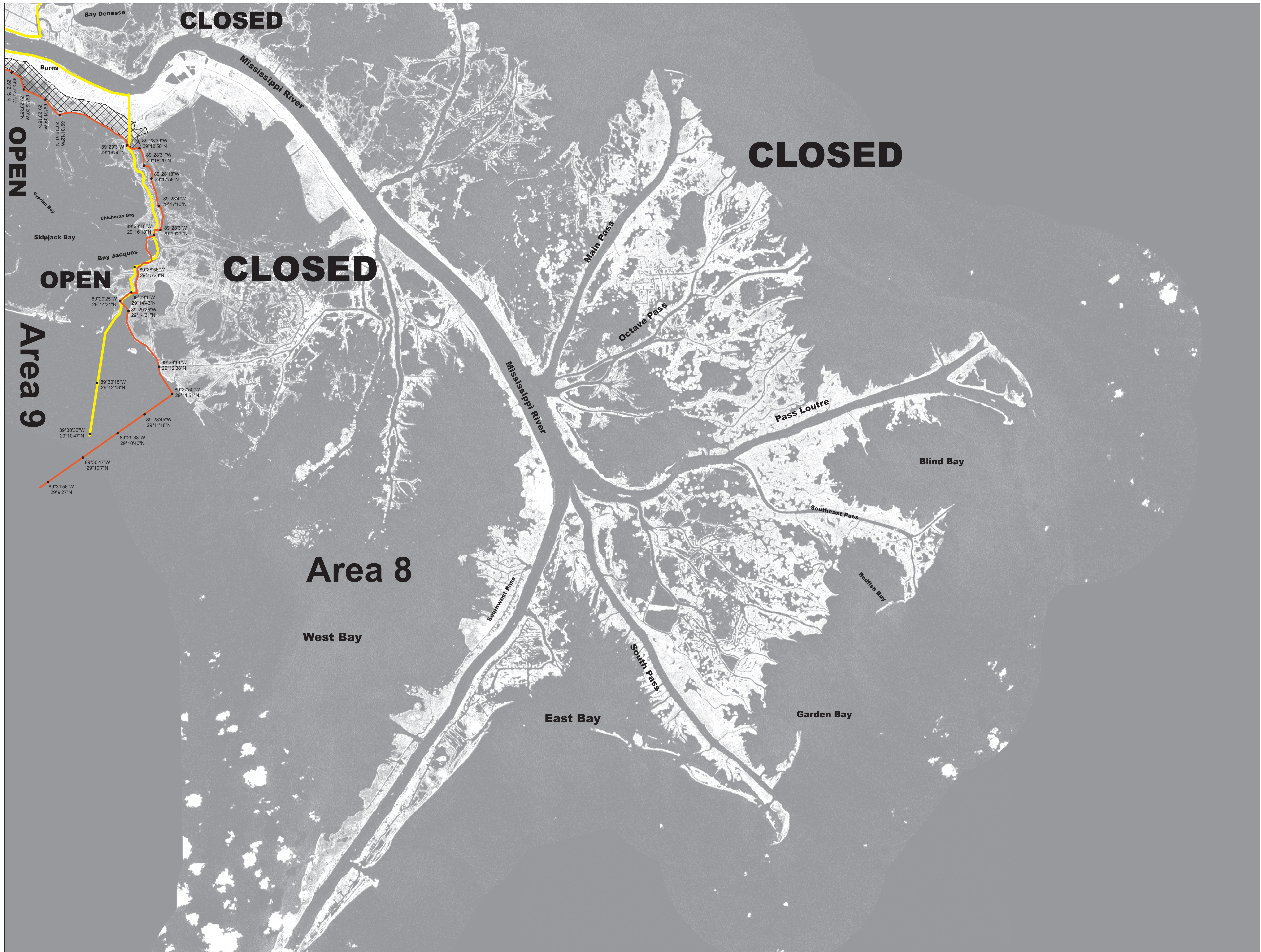


Reference coordinates are in degree minute second
format Datum NAD83

50 yard radius closure from point of waste
discharge exists for all man-made habitable structures.

If you see someone taking oysters from a closed area
please call Louisiana Department of Wildlife & Fisheries
(LDWF) 1-800-442-2511. For questions concerning the
closures call the Office of Public Health at 1-800-256-2775.

Background imagery provided by the Louisiana Department
of Environmental Quality (LDEQ). Compiled by Dewitt
Braud. Date of imagery 2002



This document was printed at a cost of \$ 439.96. In this printing
478 copies were produced. This document was produced by
DHH Office of Public Health, 628 N. 4th Street, Baton Rouge, LA
70821. It was printed in accordance with the standards for
printing by State Agencies established pursuant to R.S. 43:31.

2012 MSP 05/12