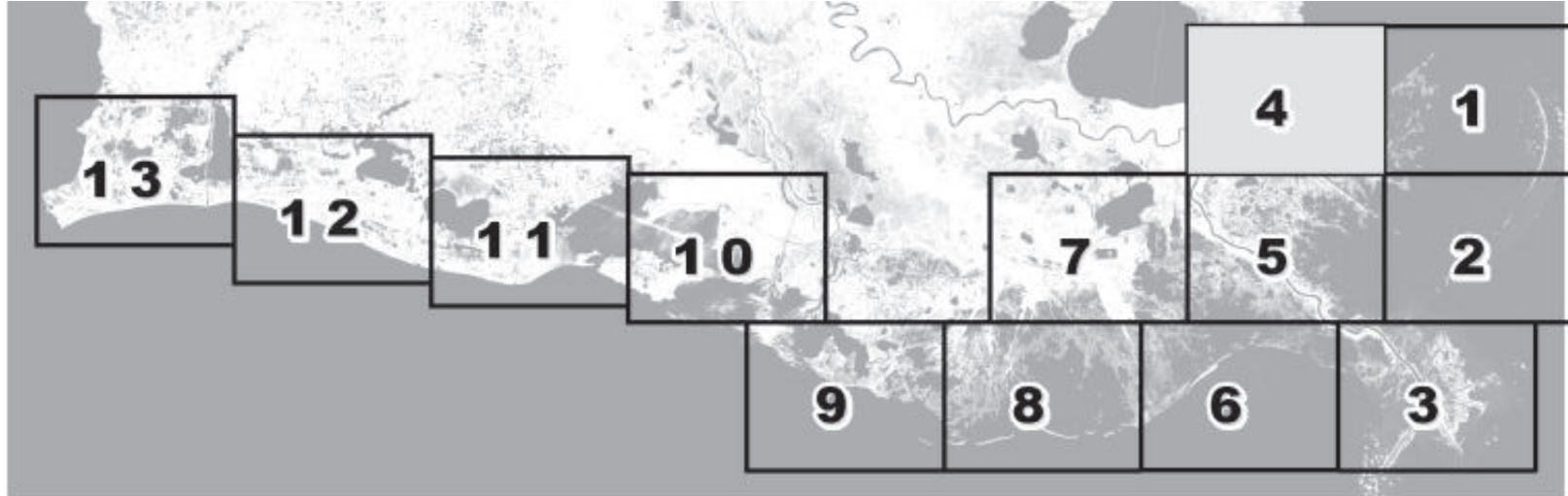


# May August 2012 Re-Classification Line

Louisiana Department of  
Health and Hospitals  
Office of Public Health  
Molluscan Shellfish Program

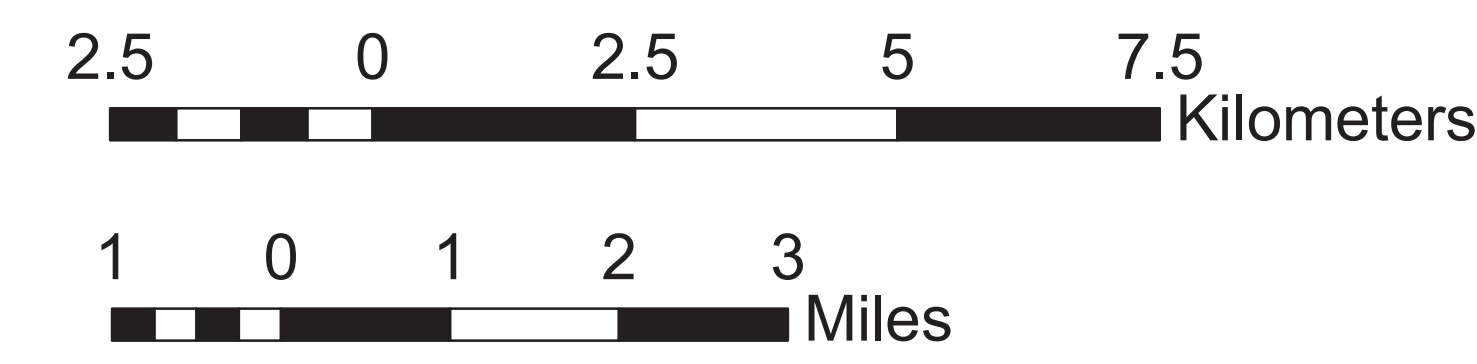
**Basin Descriptions**  
Basin 02: Barataria - Mississippi River west to Bayou Lafourche  
Basin 03: West Cove and Lower Calcasieu Lake Conditional Management Areas  
Basin 04: Mississippi State line west to the Mississippi River  
Basin 06: Atchafalaya River west to Freshwater Bayou Canal including Vermilion, East Cote Blanche, and West Cote Blanche Bays.  
Basin 12: Terrebonne - Bayou Lafourche to the Atchafalaya River

Max Hrs from Harvest	36 Hrs	8 Hrs	1 Hr
Basin 02	Jan-Feb Dec	Mar-Apr Nov	May-Oct
Basin 03	Jan-Feb Dec	Mar-Apr Nov	Oct
Basin 04	Jan-Feb Dec	Mar-Apr Nov	May-Oct
Basin 06	Jan-Feb Dec	Mar-Apr Nov	May-Oct
Basin 12	Jan-Feb Dec	Mar-Apr Nov	May-Oct



**Closure Line**  
**Area Lines**

**Prohibited Areas**



Scale 1:72,000



Reference coordinates are in degree minute second  
format Datum NAD83

50 yard radius closure from point of waste  
discharge exists for all man-made habitable structures.

If you see someone taking oysters from a closed area  
please call Louisiana Department of Wildlife & Fisheries  
(LDWF) 1-800-442-2511. For questions concerning the  
closures call the Office of Public Health at 1-800-256-2775.

Background imagery provided by the Louisiana Department  
of Environmental Quality (LDEQ). Compiled by Dewitt  
Braud. Date of imagery 2002



This document was printed at a cost of \$ 439.96. In this printing  
478 copies were produced. This document was produced by  
DHHS/Office of Public Health, 628 N. 4<sup>th</sup> Street, Baton Rouge, LA  
70821. It was printed in accordance with the standards for  
printing by State Agencies established pursuant to R.S. 43:31.