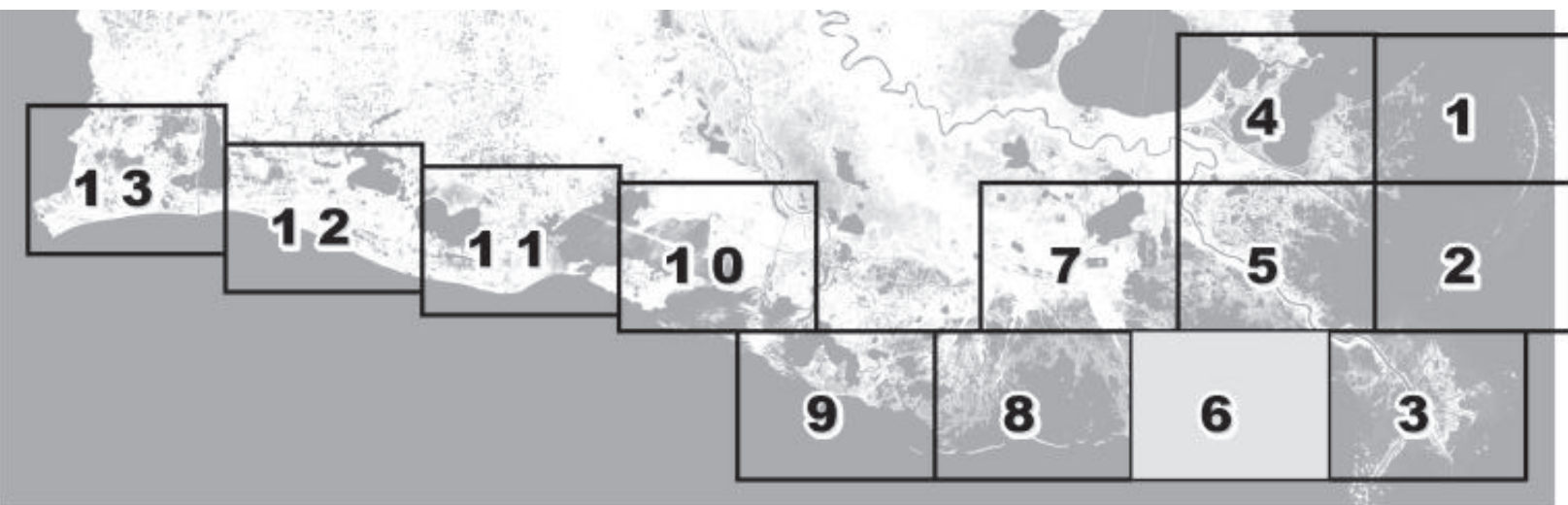


May August 2012 Re-Classification Line

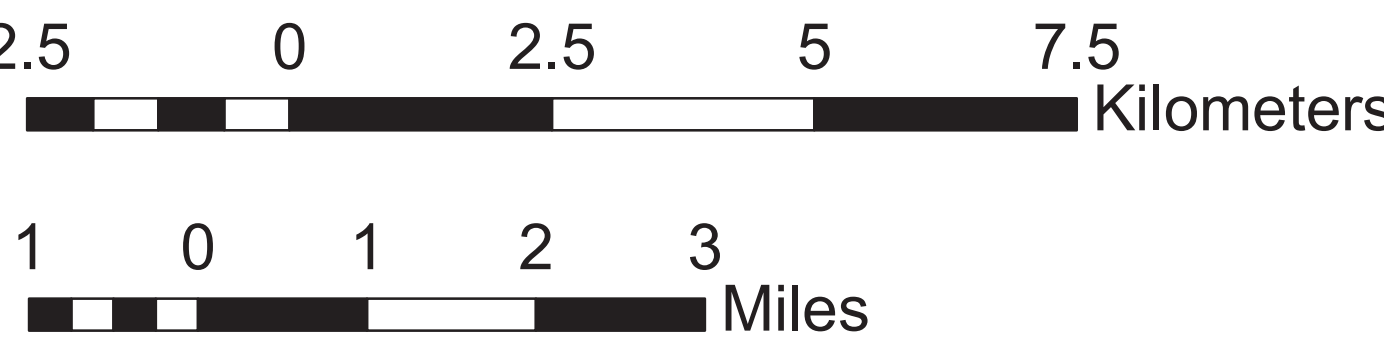
Louisiana Department of
Health and Hospitals
Office of Public Health
Molluscan Shellfish Program

Basin Descriptions			
Basin 02: Barataria - Mississippi River west to Bayou Lafourche			
Basin 03: West Cove and Lower Calcasieu Lake Conditional Management Areas			
Basin 04: Mississippi State line west to the Mississippi River			
Basin 06: Atchafalaya River west to Freshwater Bayou Canal including Vermilion, East Cote Blanche, and West Cote Blanche Bays.			
Basin 12: Terrebonne - Bayou Lafourche to the Atchafalaya River			
Max Hrs from Harvest	36 Hrs	8 Hrs	1 Hr
Basin 02	Jan-Feb Dec	Mar-Apr Nov	May-Oct
Basin 03	Jan-Feb Dec	Mar-Apr Nov	Oct
Basin 04	Jan-Feb Dec	Mar-Apr Nov	May-Oct
Basin 06	Jan-Feb Dec	Mar-Apr Nov	May-Oct
Basin 12	Jan-Feb Dec	Mar-Apr Nov	May-Oct



Closure Line
Area Lines

Prohibited Areas



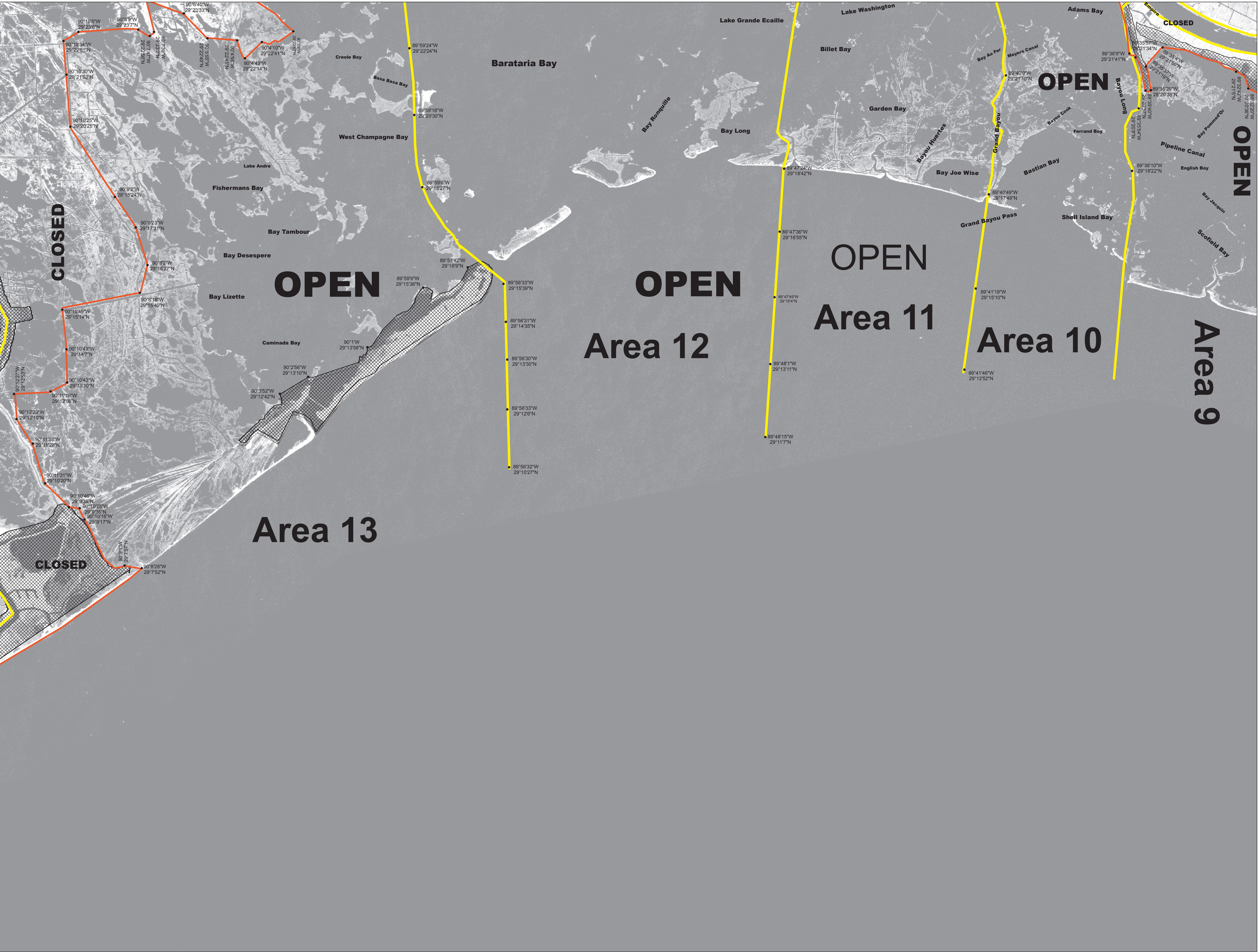
Scale 1:72,000

Reference coordinates are in degree minute second
format Datum NAD83

50 yard radius closure from point of waste
discharge exists for all man-made habitable structures.

If you see someone taking oysters from a closed area
please call Louisiana Department of Wildlife & Fisheries
(LDWF) 1-800-442-2511. For questions concerning the
closures call the Office of Public Health at 1-800-256-2775.

Background imagery provided by the Louisiana Department
of Environmental Quality (LDEQ). Compiled by Dewitt
Braud. Date of imagery 2002.



This document was printed at a cost of \$ 439.96. In this printing
478 copies were produced. This document was produced by
DHHP/Office of Public Health, 628 N. 4th Street, Baton Rouge, LA
70821. It was printed in accordance with the standards for
printing by State Agencies established pursuant to R.S. 43:31.