

# May August 2022 Re-Classification Line

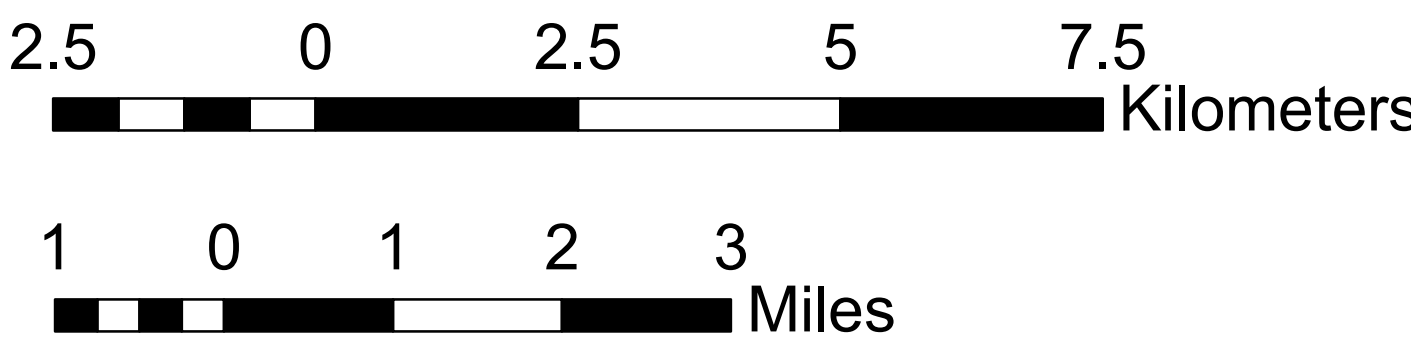
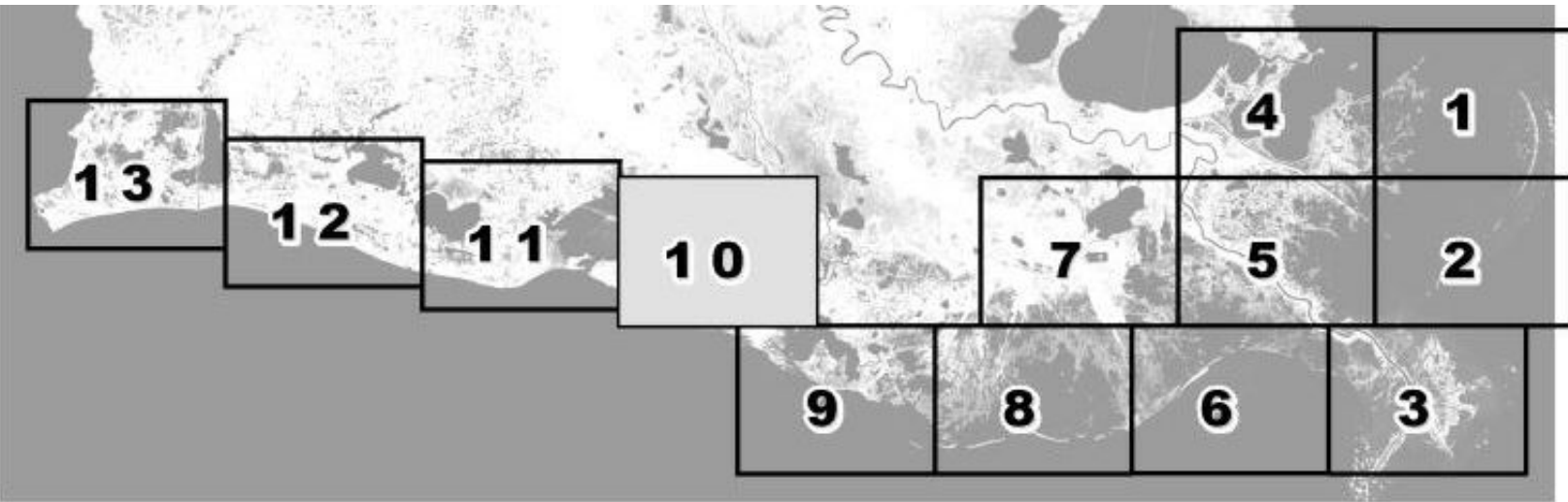


Louisiana Department of Health  
Office of Public Health  
Molluscan Shellfish Program

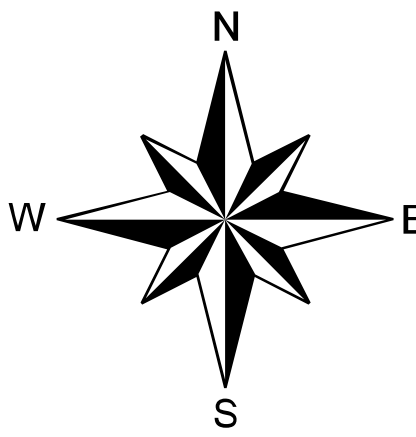
## Refrigeration Requirements for Shellstock Harvested for Raw Consumption

**Basin Descriptions**  
Barataria Basin - Mississippi River west to Bayou Lafourche  
Pontchartrain Basin - Mississippi state line to the Mississippi River  
Terebonne Basin - Bayou Lafourche to the Atchafalaya River  
Vermilion Basin - Growing waters south to the South West Pass  
and Marsh Island to defined federal watersand from Pt. Chevert to  
Freshwater Bayou Canal

Max Hrs From Harvest	36 Hrs	8 Hrs	1 Hr
Basin 02	Jan-Feb Dec	Mar-Apr Nov	May-Oct
Basin 03	Jan-Feb Dec	Mar-Apr Nov	Oct
Basin 04	Jan-Feb Dec	Mar-Apr Nov	May-Oct
Basin 06	Jan-Feb Dec	Mar-Apr Nov	May-Oct
Basin 12	Jan-Feb Dec	Mar-Apr Nov	May-Oct



Scale 1:72,000



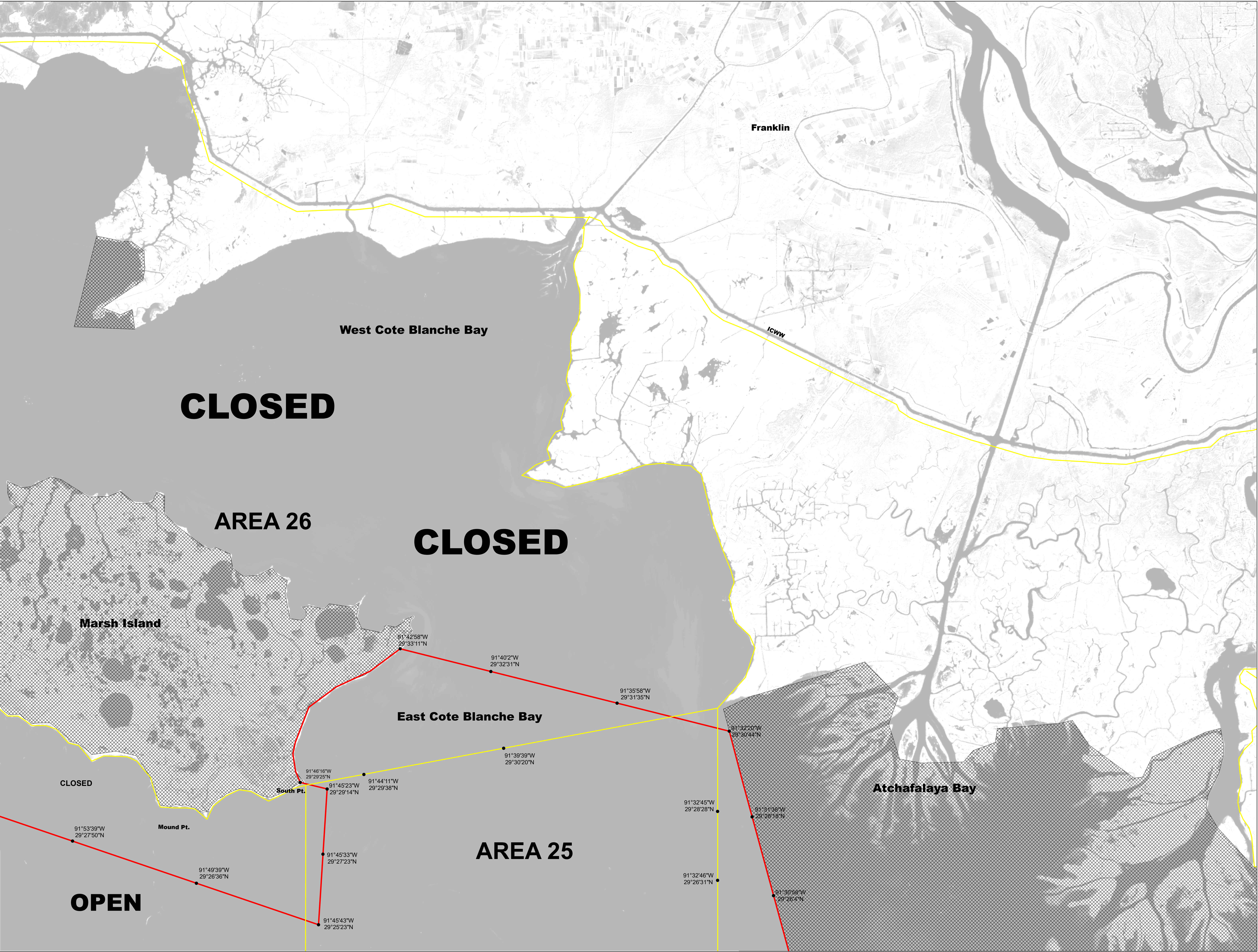
Reference coordinates are in degree minute second  
format Datum NAD83

50 yard radius closure from point of waste  
discharge exists for all man-made habitable structures.

If you see someone taking oysters from a closed area  
please call Louisiana Department of Wildlife & Fisheries  
(LDWF) 1-800-442-2511. For questions concerning the  
closures call the Office of Public Health 1-800-256-2775.

Background imagery provided by Esri, HERE, Garmin, (c) OpenStreetMap  
contributors, and the GIS user community.  
Default map processed by Quantitative Ecological Services, Inc.

Not for navigational purposes



This document was printed at a cost of \$ 429.96. In this printing,  
478 copies were produced. This document was produced by  
LDH/Office of Public Health, 628 N. 4<sup>th</sup> Street, Baton Rouge, LA  
70821. It was printed in accordance with the standards for  
printing by State Agencies established pursuant to R.S. 43:31.  
2022 MSP 05/22