

May August 2022 Re-Classification Line

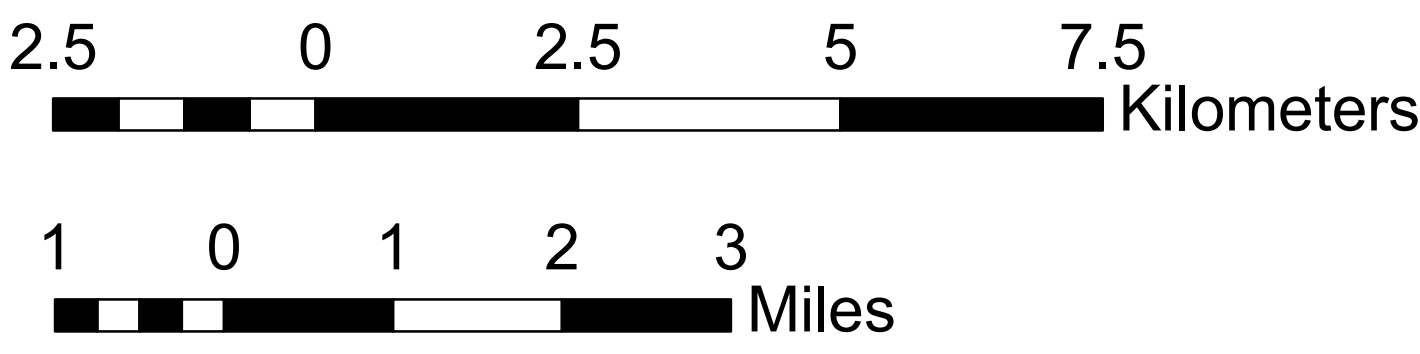
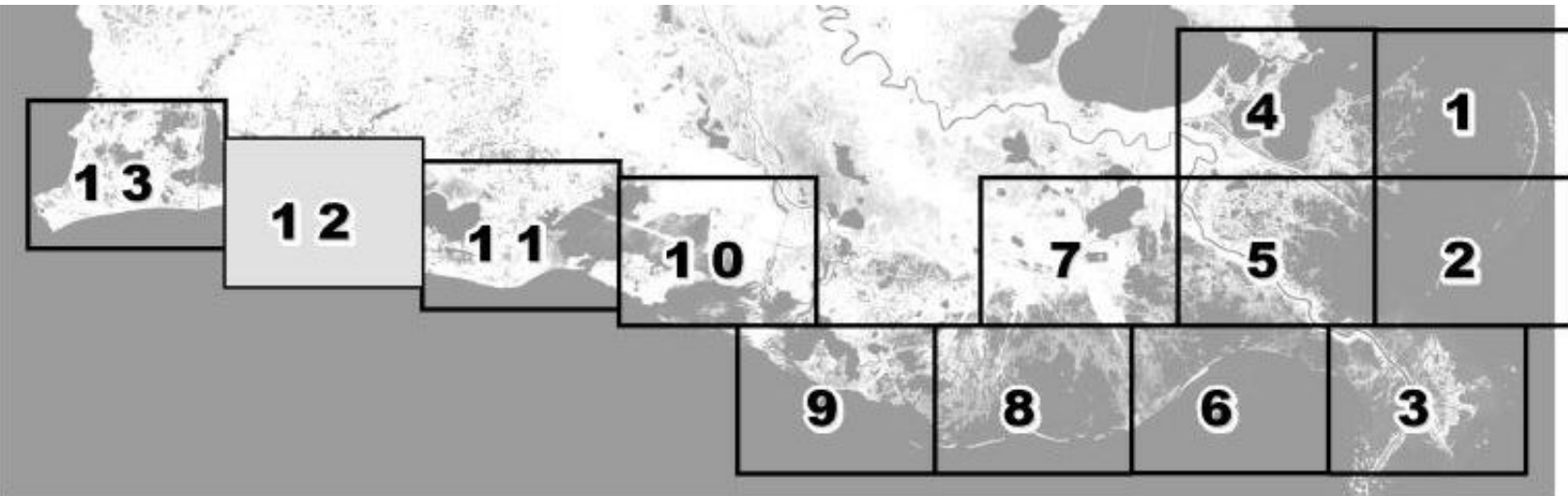


Louisiana Department of Health Office of Public Health Molluscan Shellfish Program

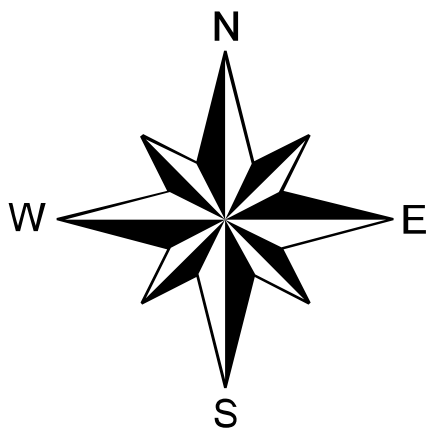
Refrigeration Requirements for Shellstock Harvested for Raw Consumption

Basin Descriptions
Barataria Basin - Mississippi River west to Bayou Lafourche
Pontchartrain Basin - Mississippi state line to the Mississippi River
Terebonne Basin - Bayou Lafourche to the Atchafalaya River
VermilionBasin - Growing waters south to the South West Pass
and Marsh Island to defined federal watersand from Pt. Chevert to
Freshwater Bayou Canal

Max Hrs From Harvest	36 Hrs	8 Hrs	1 Hr
Basin 02	Jan-Feb Dec	Mar-Apr Nov	May-Oct
Basin 03	Jan-Feb Dec	Mar-Apr Nov	Oct
Basin 04	Jan-Feb Dec	Mar-Apr Nov	May-Oct
Basin 06	Jan-Feb Dec	Mar-Apr Nov	May-Oct
Basin 12	Jan-Feb Dec	Mar-Apr Nov	May-Oct



Scale 1:72,000



Reference coordinates are in degree minute second
format Datum NAD83

50 yard radius closure from point of waste
discharge exists for all man-made habitable structures.

If you see someone taking oysters from a closed area
please call Louisiana Department of Wildlife & Fisheries
(LDWF) 1-800-442-2511. For questions concerning the
closures call the Office of Public Health 1-800-256-2775.

Background imagery provided by Esri, HERE, Garmin, (c) OpenStreetMap
contributors, and the GIS user community.
Default map processed by Quantitative Ecological Services, Inc.

Not for navigational purposes

