

May August 2022 Re-Classification Line

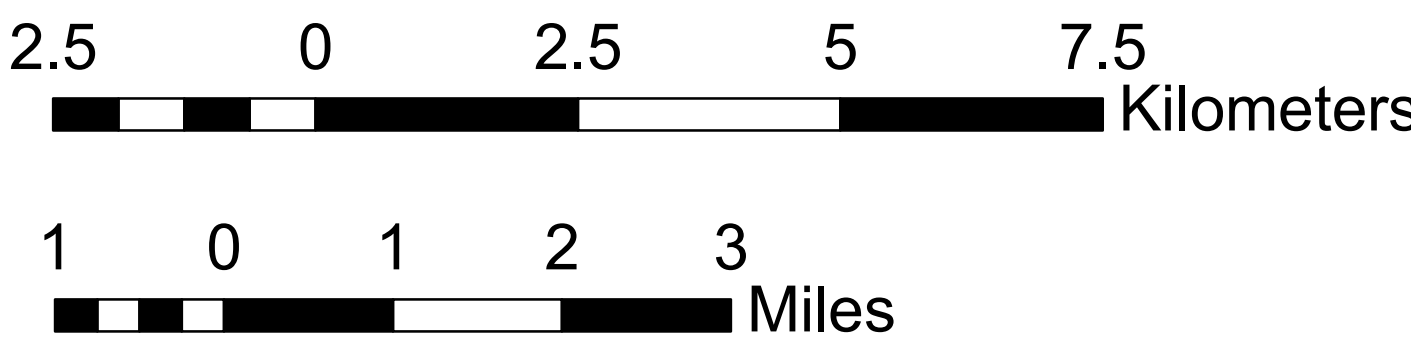
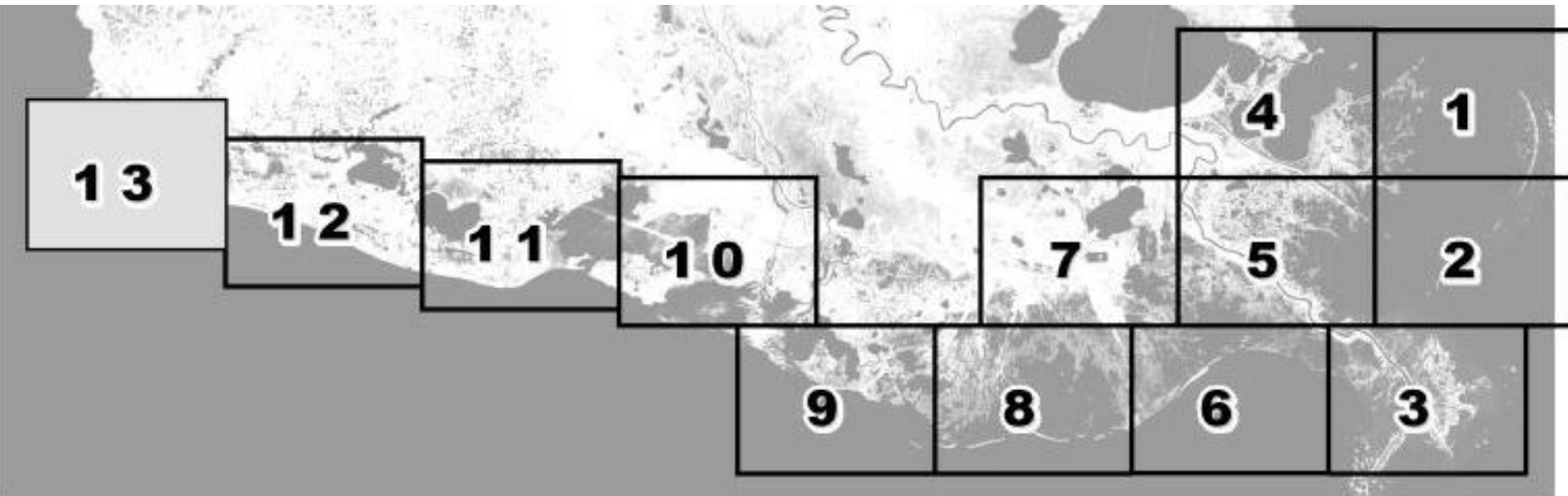


Louisiana Department of Health
Office of Public Health
Molluscan Shellfish Program

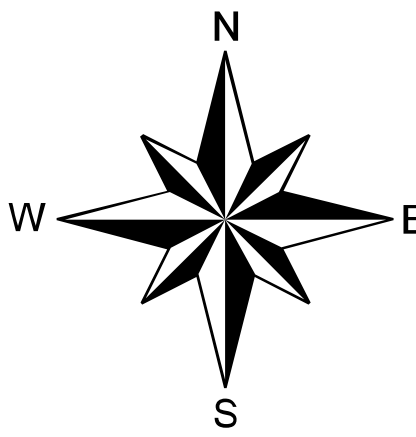
Refrigeration Requirements for Shellstock Harvested for Raw Consumption

Basin Descriptions
Barataria Basin - Mississippi River west to Bayou Lafourche
Pontchartrain Basin - Mississippi state line to the Mississippi River
Terebonne Basin - Bayou Lafourche to the Atchafalaya River
Vermilion Basin - Growing waters south to the South West Pass
and Marsh Island to defined federal waters and from Pt. Chevert to
Freshwater Bayou Canal

Max Hrs From Harvest	36 Hrs	8 Hrs	1 Hr
Basin 02	Jan-Feb Dec	Mar-Apr Nov	May-Oct
Basin 03	Jan-Feb Dec	Mar-Apr Nov	Oct
Basin 04	Jan-Feb Dec	Mar-Apr Nov	May-Oct
Basin 06	Jan-Feb Dec	Mar-Apr Nov	May-Oct
Basin 12	Jan-Feb Dec	Mar-Apr Nov	May-Oct



Scale 1:72,000



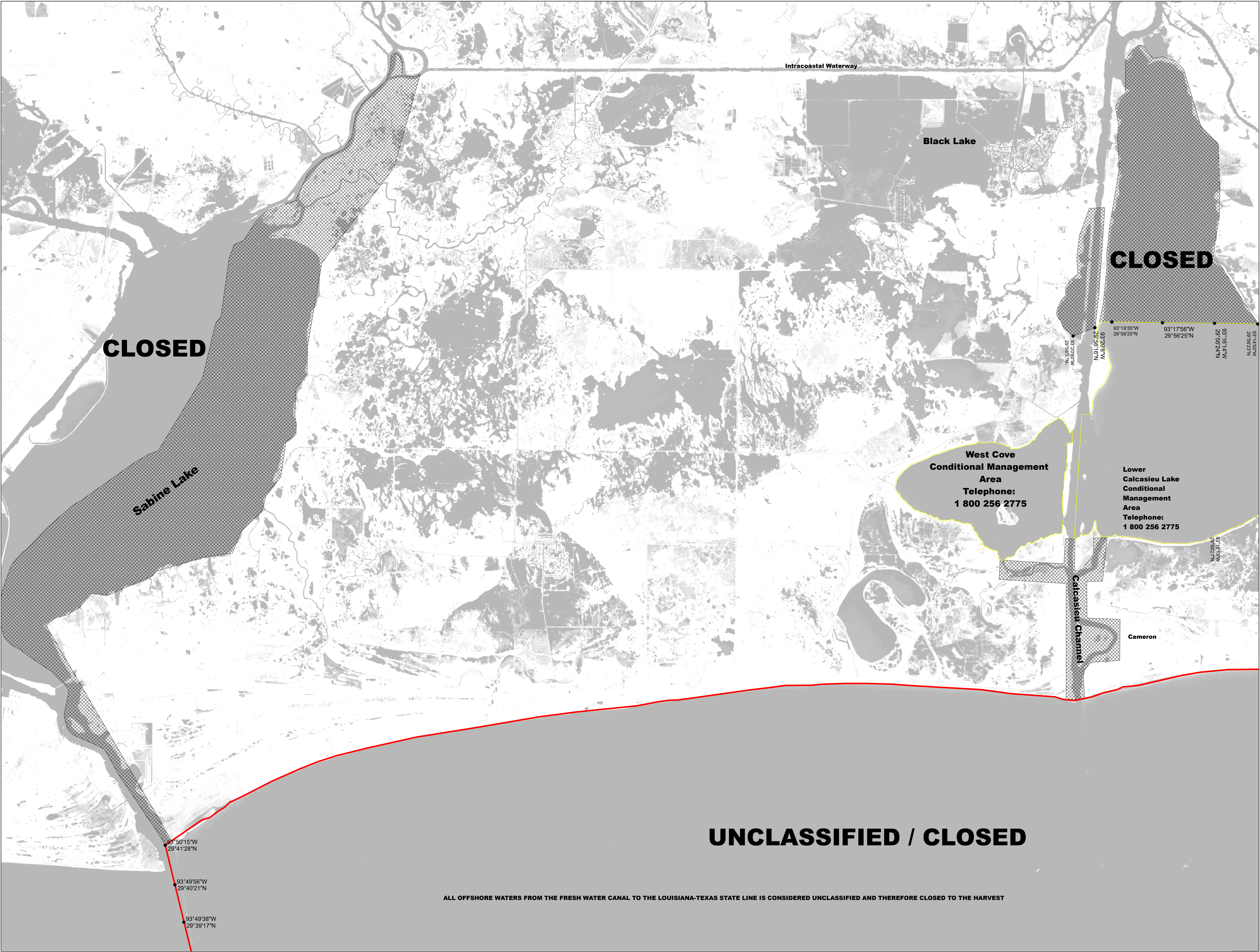
Reference coordinates are in degree minute second
format Datum NAD83

50 yard radius closure from point of waste
discharge exists for all man-made habitable structures.

If you see someone taking oysters from a closed area
please call Louisiana Department of Wildlife & Fisheries
(LDWF) 1-800-442-2511. For questions concerning the
closures call the Office of Public Health 1-800-256-2775.

Background imagery provided by Esri, HERE, Garmin, (c) OpenStreetMap
contributors, and the GIS user community.
Default map processed by Quantitative Ecological Services, Inc.

Not for navigational purposes



This document was printed at a cost of \$ 439.96. In this printing,
478 copies were produced. This document was produced by
LDH Office of Public Health, 628 N. 4th Street, Baton Rouge, LA
70821. It was printed in accordance with the standards for
printing by State Agencies established pursuant to R.S. 43:31.

2022 MSP 05/22