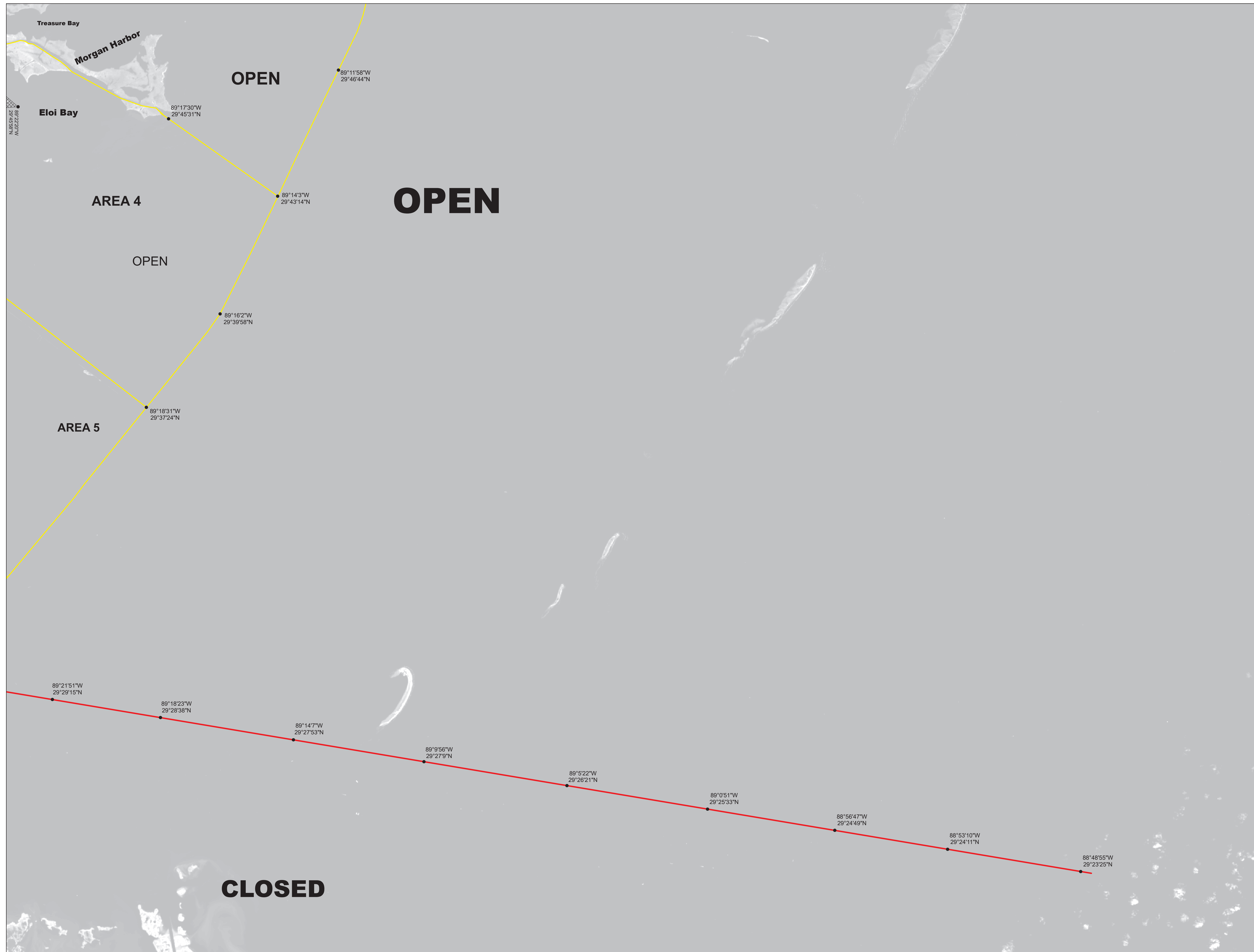


May August 2022 Re-Classification Line



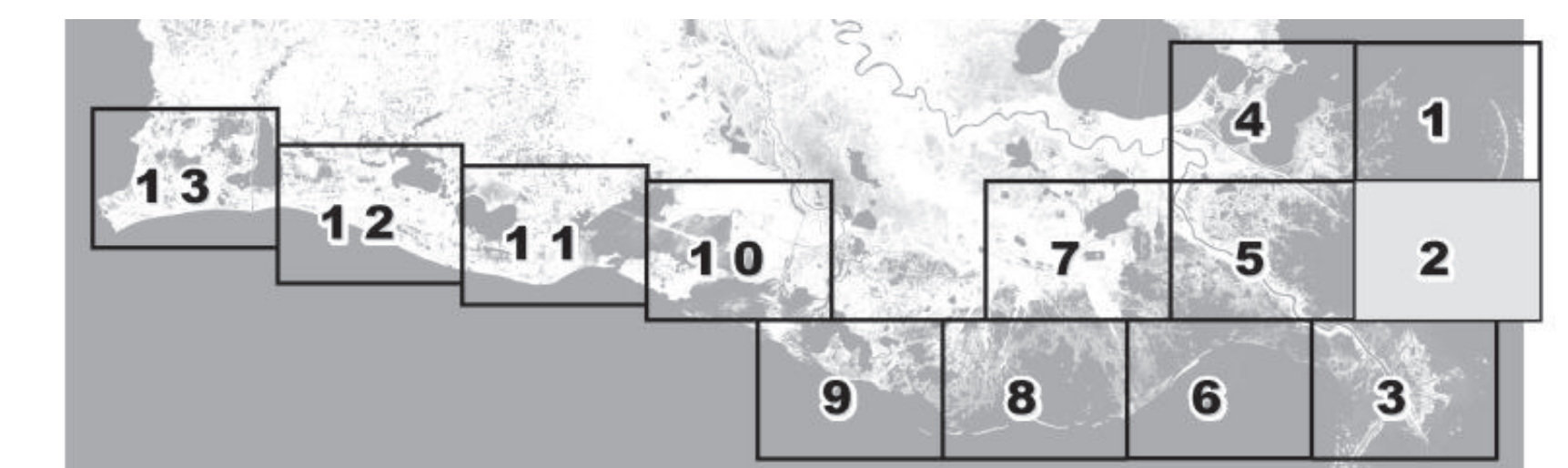
Louisiana Department of Health
Office of Public Health
Molluscan Shellfish Program



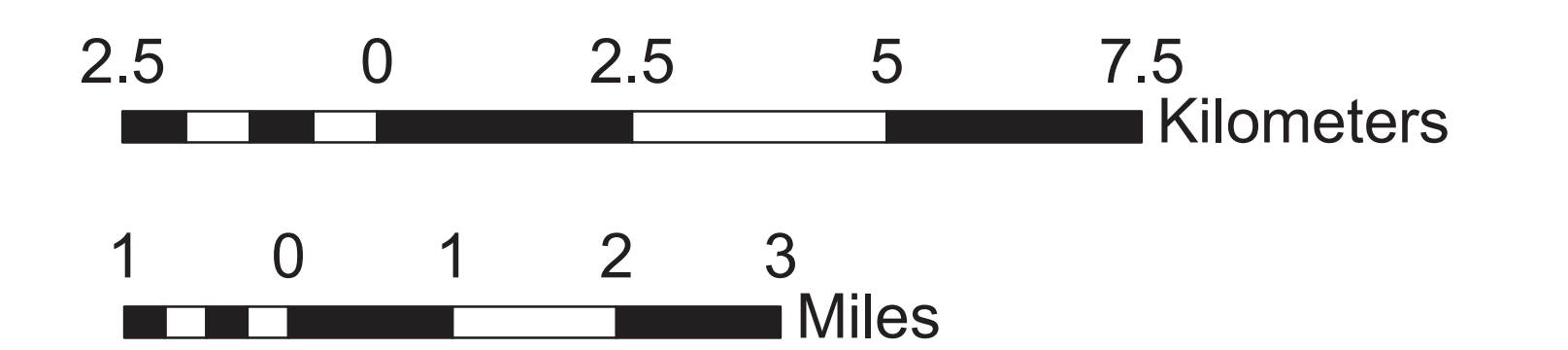
Refrigeration Requirements for Shellstock Harvested for Raw Consumption

Basin Descriptions
 Barataria Basin - Mississippi River west to Bayou Lafourche
 Pontchartrain Basin - Mississippi state line to the Mississippi River
 Terrebonne Basin - Bayou Lafourche to the Atchafalaya River
 Vermilion Basin - Growing waters south to the South West Pass and Marsh Island to defined federal waters and from Pt. Chevert to Freshwater Bayou Canal

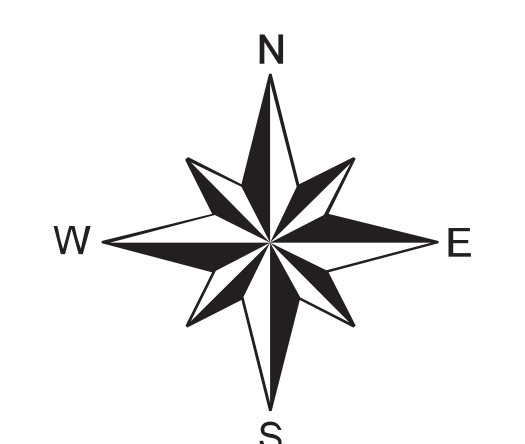
Max Hrs From Harvest	36 Hrs	8 Hrs	1 Hr
Basin 02	Jan-Feb Dec	Mar-Apr Nov	May-Oct
Basin 03	Jan-Feb Dec	Mar-Apr Nov	Oct
Basin 04	Jan-Feb Dec	Mar-Apr Nov	May-Oct
Basin 06	Jan-Feb Dec	Mar-Apr Nov	May-Oct
Basin 12	Jan-Feb Dec	Mar-Apr Nov	May-Oct



CLOSURE LINE
 AREA LINES
 Prohibited Areas



Scale 1:72,000



Reference coordinates are in degree minute second format Datum NAD83

50 yard radius closure from point of waste discharge exists for all man-made habitable structures.

If you see someone taking oysters from a closed area please call Louisiana Department of Wildlife & Fisheries (LDWF) 1-800-442-2511. For questions concerning the closures call the Office of Public Health 1-800-256-2775.

Background imagery provided by Esri, HERE, Garmin, (c) OpenStreetMap contributors, and the GIS user community. Default map processed by Quantitative Ecological Services, Inc.

Not for navigational purposes

This document was printed at a cost of \$ 439.96. In this printing, 478 copies were produced. This document was produced by LDH/Office of Public Health, 628 N. 4th Street, Baton Rouge, LA 70821. It was printed in accordance with the standards for printing by State Agencies established pursuant to R.S. 43:31.
2022 MSP 05/22