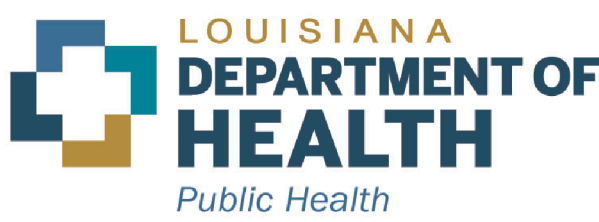


May August 2025 Re-Classification Line

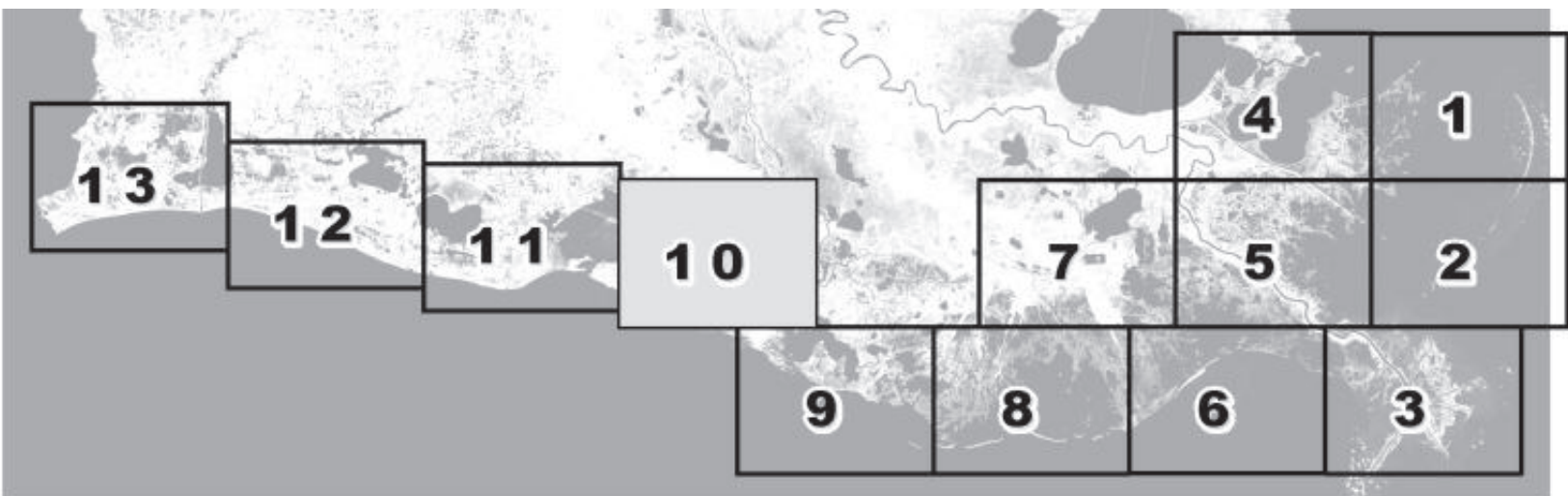


Louisiana Department of Health Office of Public Health Molluscan Shellfish Program

Refrigerated Requirements for Shellstock Harvested for Raw Consumption

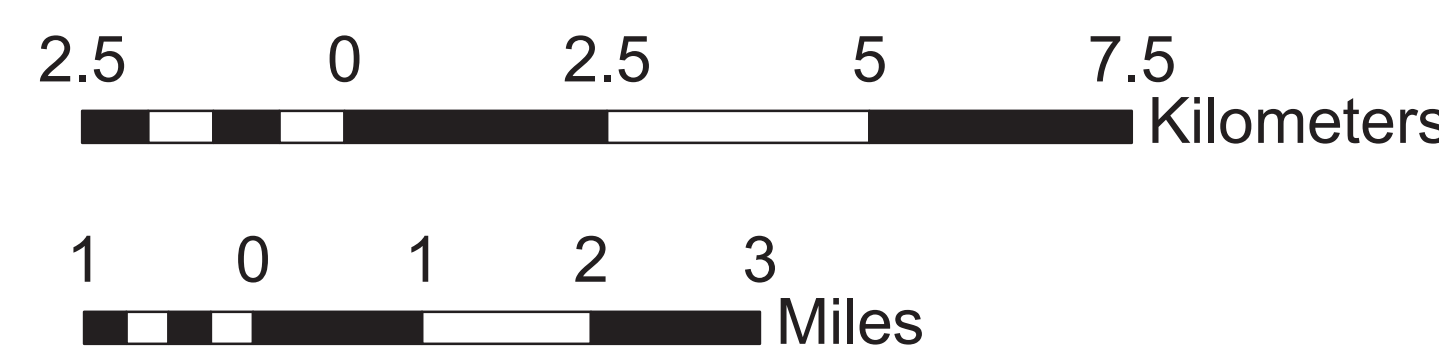
Basin Descriptions
Barataria Basin - Mississippi River west to Bayou Lafourche
Pontchartrain Basin - Mississippi state line to the Mississippi River
Terebonne Basin - Bayou Lafourche to the Atchafalaya River
VermilionBasin - Growing waters south to the South West Pass and Marsh Island to defined federal watersand from Pt. Chevert to Freshwater Bayou Canal

Max Hrs from Harvest	36 Hrs	8 Hrs	1 Hr
Basin 2	Jan-Feb Dec	Mar-Apr Nov	May-Oct
Basin 3	Jan-Feb Dec	Mar-Apr Nov	Oct
Basin 4	Jan-Feb Dec	Mar-Apr Nov	May-Oct
Basin 6	Jan-Feb Dec	Mar-Apr Nov	May-Oct
Basin 12	Jan-Feb Dec	Mar-Apr Nov	May-Oct



Area Lines
Closure Area

Prohibited Areas



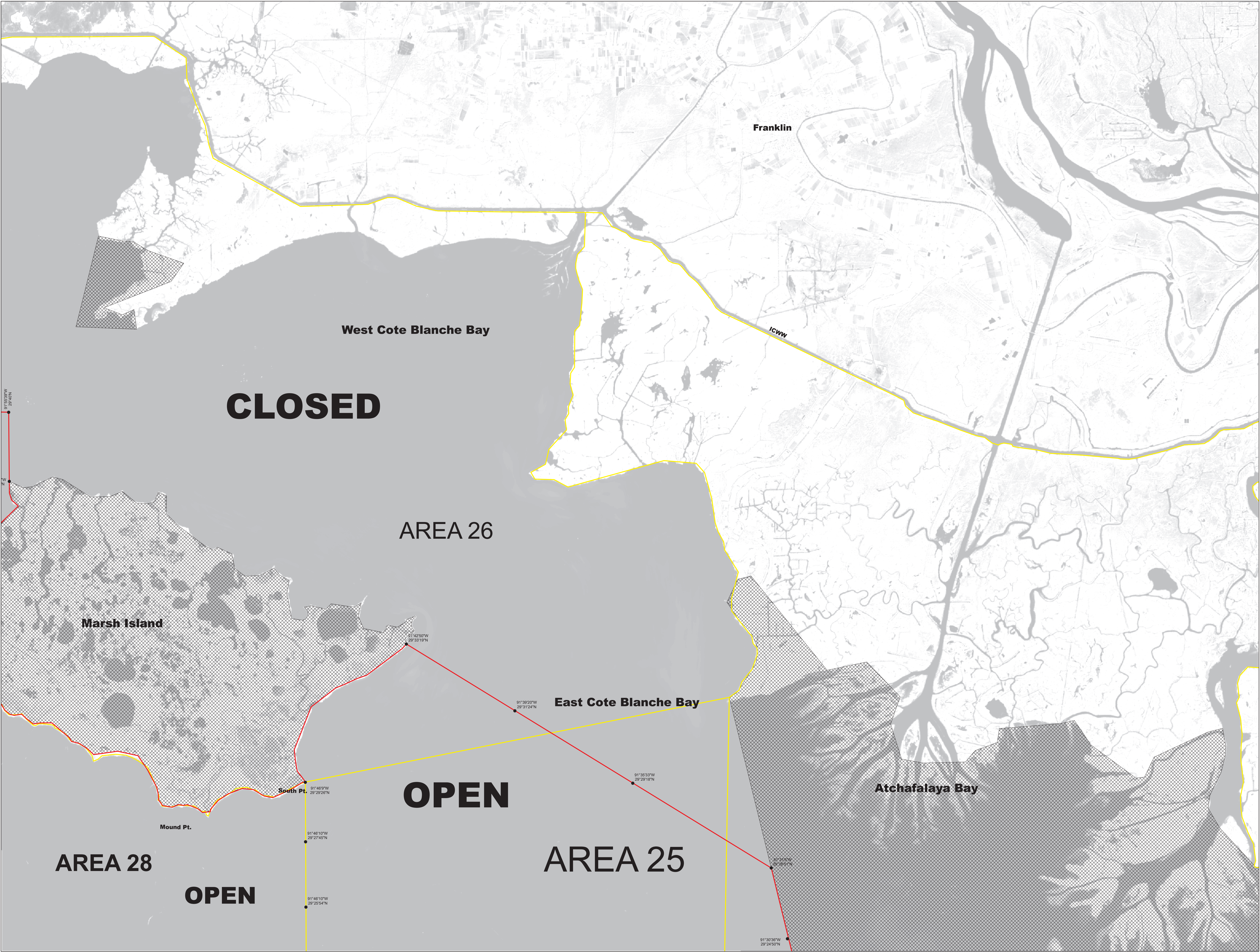
Scale 1:72,000



50 yard radius closure from point of waste discharge exists for all man-made habitable structures.

Background imagery provided by USGS EarthExplorer and processed by Quantitative Ecological Services, Inc.
Date of imagery 2014.

Not for navigational purposes



This document was printed at a cost of \$ 1,772.61. In this printing, 478 copies were produced. This document was produced by LDH/Office of Public Health, 628 N. 4th Street, Baton Rouge, LA 70821. It was printed in accordance with the standards for printing by State Agencies established pursuant to R.S. 43:31.

2025 MSP 05/25