

November February 2022 Re-Classification Line

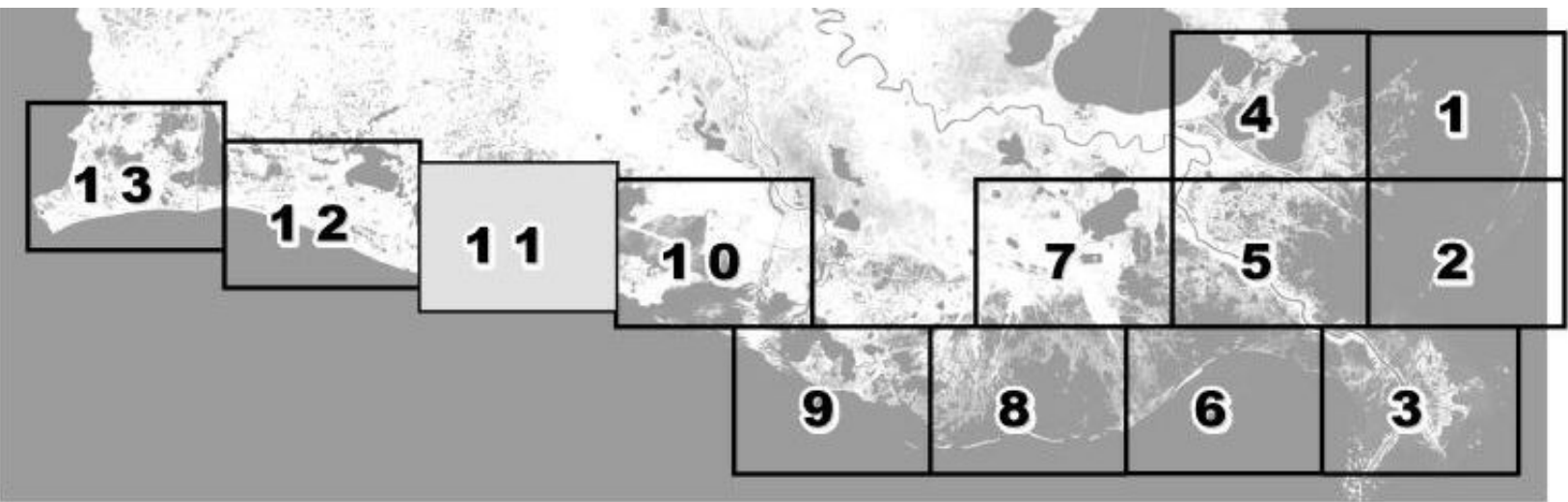


Louisiana Department of Health
Office of Public Health
Molluscan Shellfish Program

Refrigeration Requirements for Shellstock Harvested for Raw Consumption

Basin Descriptions
Basin 02: Barataria- Mississippi River west to Bayou Lafourche
Basin 03: West Cove and Lower Calcasieu Lake Conditional Management Areas
Basin 04: Mississippi State Line west to the Mississippi River
Basin 06: Atchafalaya River west to Freshwater Bayou Canal including Vermilion, East Cote Blanche, and West Cote Blanche Bays
Basin 12: Terrebonne - Bayou Lafourche to the Atchafalaya River

Max Hrs From Harvest	36 Hrs	8 Hrs	1 Hr
Basin 02	Jan-Feb Dec	Mar-Apr Nov	May-Oct
Basin 03	Jan-Feb Dec	Mar-Apr Nov	Oct
Basin 04	Jan-Feb Dec	Mar-Apr Nov	May-Oct
Basin 06	Jan-Feb Dec	Mar-Apr Nov	May-Oct
Basin 12	Jan-Feb Dec	Mar-Apr Nov	May-Oct



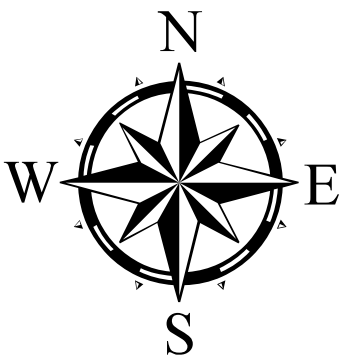
Prohibited Areas

CLOSURE LINE
 AREA LINES

2.5 0 2.5 5 7.5 Kilometers

1 0 1 2 3 Miles

Scale 1:72,000



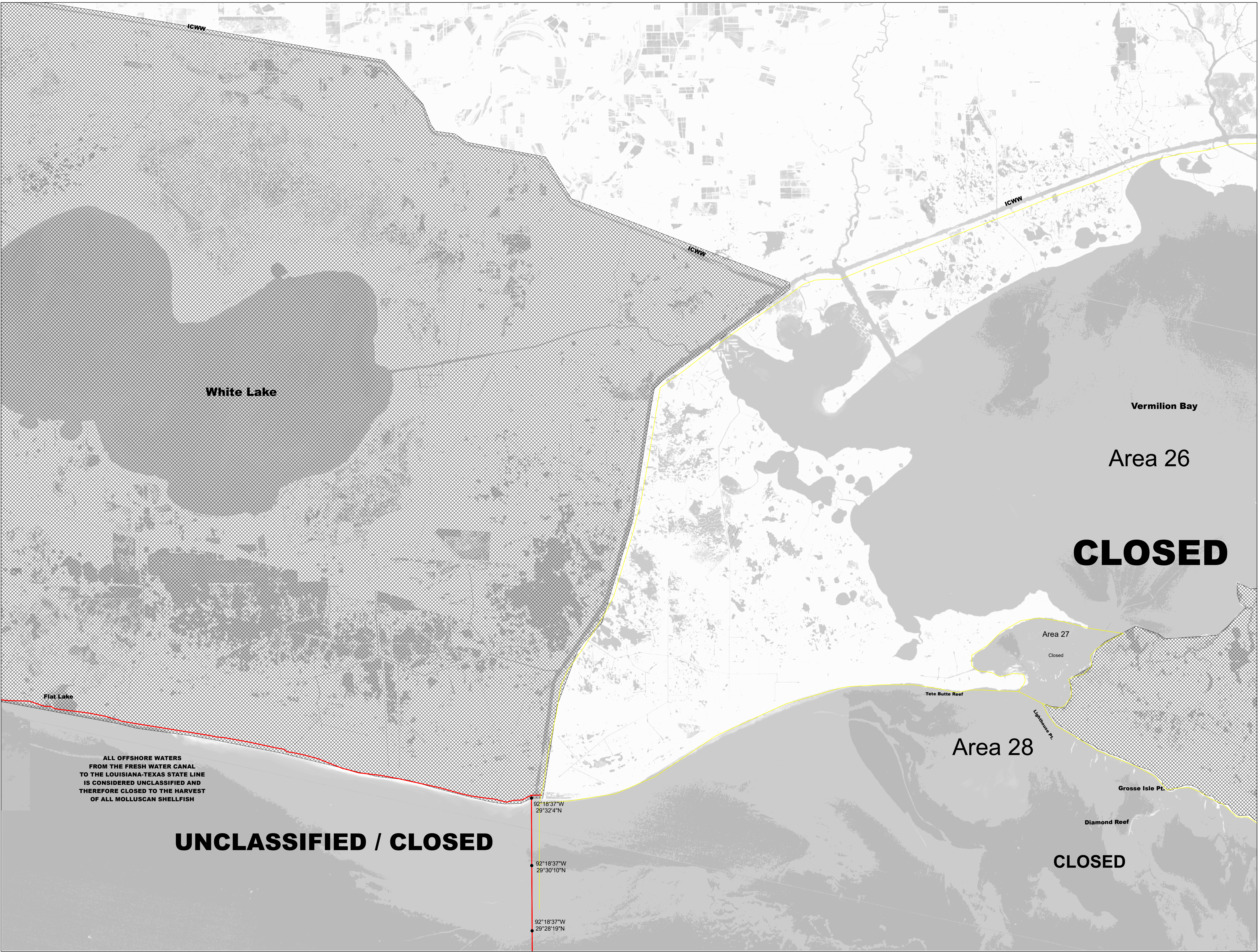
Reference coordinates are in degree minute second format Datum NAD83

50 yard radius closure from point of waste discharge exists for all man-made habitable structures.

If you see someone taking oysters from a closed area please call Louisiana Department of Wildlife & Fisheries (LDWF) 1-800-442-2511. For questions concerning the closures call the Office of Public Health 1-800-256-2775.

Background imagery provided by USGS EarthExplorer and processed by Quantitative Ecological Services, Inc.
Date of imagery 2014.

Not for navigational purposes



This document was printed at a cost of \$ 439.96. In this printing, 478 copies were produced. This document was produced by LDH/Office of Public Health, 628 N. 4th Street, Baton Rouge, LA 70821. It was printed in accordance with the standards for printing by State Agencies established pursuant to R.S. 43:31.
2022 MSP 11/22