

November February 2022  
Re-Classification Line



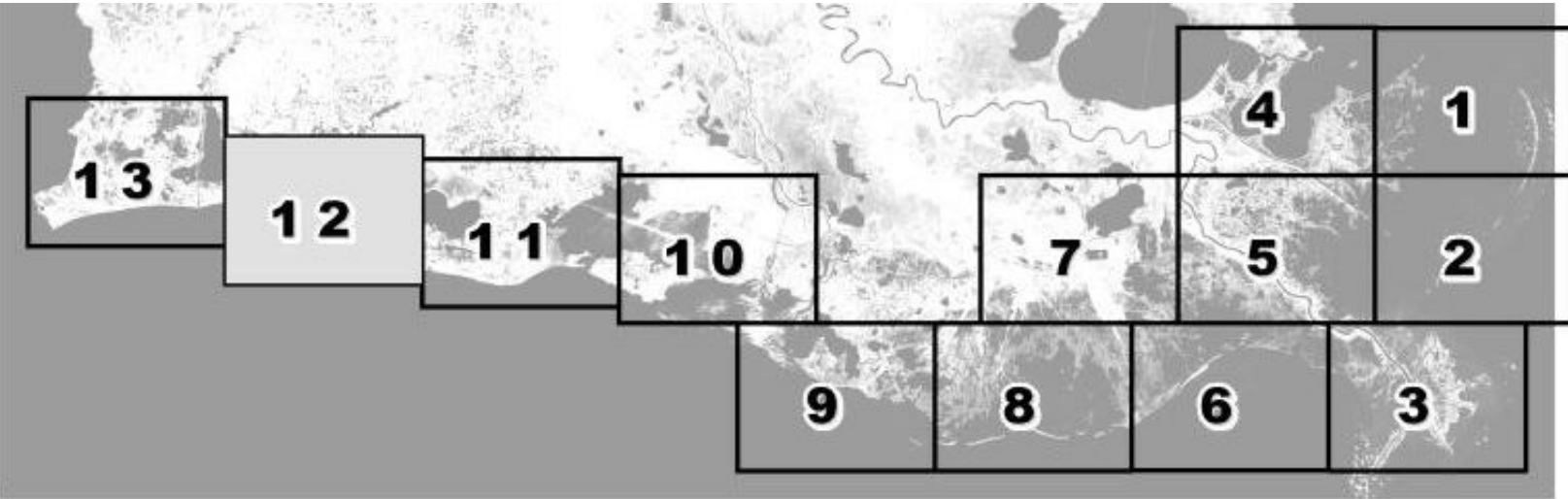
Louisiana Department of Health  
Office of Public Health  
Molluscan Shellfish Program



Refrigeration Requirements for Shellstock  
Harvested for Raw Consumption

Basin Descriptions  
Basin 02: Barataria- Mississippi River west to Bayou Lafourche  
Basin 03: West Cove and Lower Calcasieu Lake Conditional Management Areas  
Basin 04: Mississippi State Line west to the Mississippi River  
Basin 06: Atchafalaya River west to Freshwater Bayou Canal including Vermilion, East Cote Blanche, and West Cote Blanche Bays  
Basin 12: Terrebonne - Bayou Lafourche to the Atchafalaya River

| Max Hrs From Harvest | 36 Hrs         | 8 Hrs          | 1 Hr    |
|----------------------|----------------|----------------|---------|
| Basin 02             | Jan-Feb<br>Dec | Mar-Apr<br>Nov | May-Oct |
| Basin 03             | Jan-Feb<br>Dec | Mar-Apr<br>Nov | Oct     |
| Basin 04             | Jan-Feb<br>Dec | Mar-Apr<br>Nov | May-Oct |
| Basin 06             | Jan-Feb<br>Dec | Mar-Apr<br>Nov | May-Oct |
| Basin 12             | Jan-Feb<br>Dec | Mar-Apr<br>Nov | May-Oct |

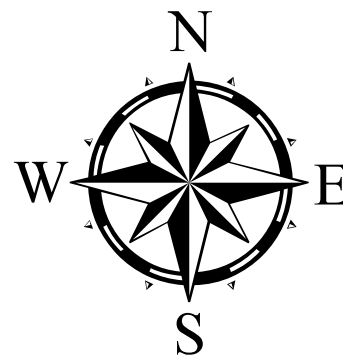


Prohibited Areas

CLOSURE LINE  
AREA LINES

2.5 0 2.5 5 7.5 Kilometers

1 0 1 2 3 Miles



Scale 1:72,000

Reference coordinates are in degree minute second format Datum NAD83

50 yard radius closure from point of waste discharge exists for all man-made habitable structures.

If you see someone taking oysters from a closed area please call Louisiana Department of Wildlife & Fisheries (LDWF) 1-800-442-2511. For questions concerning the closures call the Office of Public Health 1-800-256-2775.

Background imagery provided by USGS EarthExplorer and processed by Quantitative Ecological Services, Inc.  
Date of imagery 2014.

Not for navigational purposes