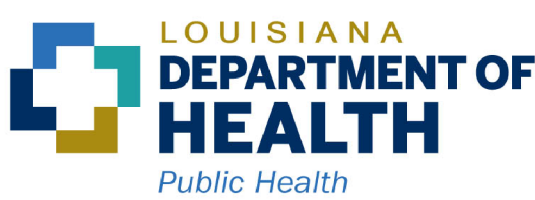
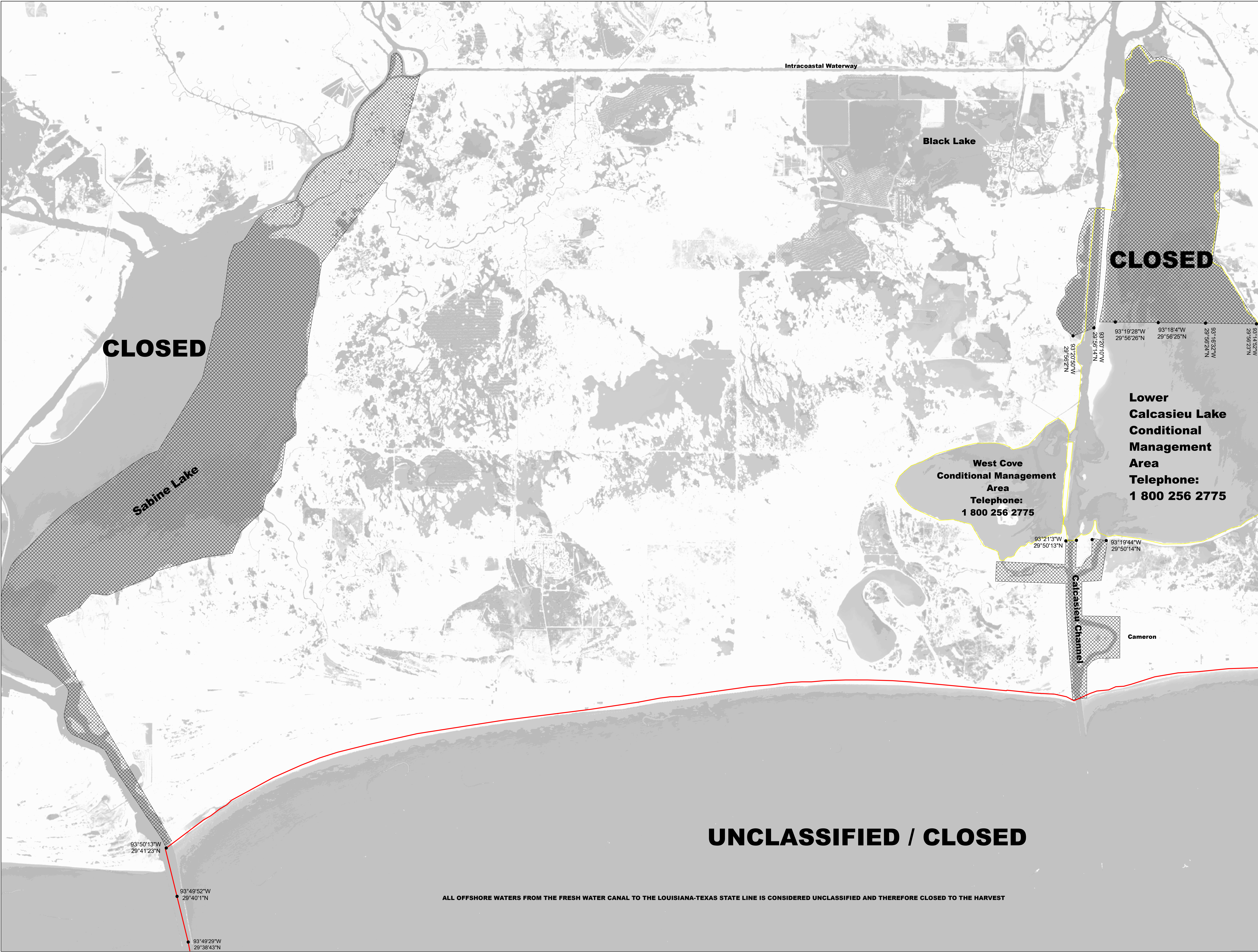


November February 2022 Re-Classification Line



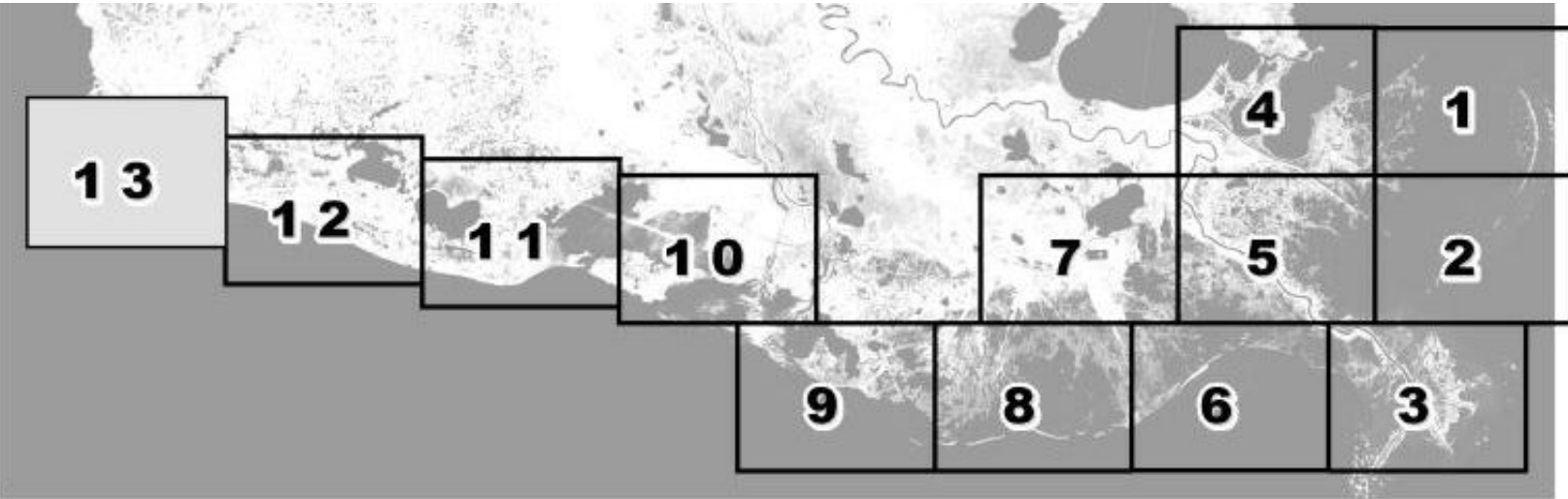
Louisiana Department of Health
Office of Public Health
Molluscan Shellfish Program



Refrigeration Requirements for Shellstock Harvested for Raw Consumption

Basin Descriptions
Basin 02: Barataria- Mississippi River west to Bayou Lafourche
Basin 03: West Cove and Lower Calcasieu Lake Conditional Management Areas
Basin 04: Mississippi State Line west to the Mississippi River
Basin 06: Atchafalaya River west to Freshwater Bayou Canal including Vermilion, East Cote Blanche, and West Cote Blanche Bays
Basin 12: Terrebonne - Bayou Lafourche to the Atchafalaya River

Max Hrs From Harvest	36 Hrs	8 Hrs	1 Hr
Basin 02	Jan-Feb Dec	Mar-Apr Nov	May-Oct
Basin 03	Jan-Feb Dec	Mar-Apr Nov	Oct
Basin 04	Jan-Feb Dec	Mar-Apr Nov	May-Oct
Basin 06	Jan-Feb Dec	Mar-Apr Nov	May-Oct
Basin 12	Jan-Feb Dec	Mar-Apr Nov	May-Oct

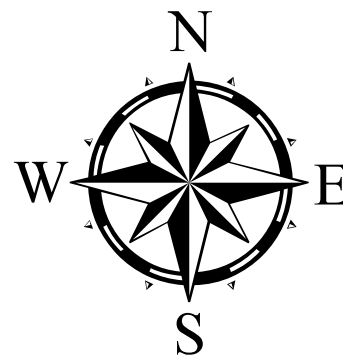


Prohibited Areas

CLOSURE LINE
 AREA LINES

2.5 0 2.5 5 7.5 Kilometers

1 0 1 2 3 Miles



Scale 1:72,000

Reference coordinates are in degree minute second format Datum NAD83

50 yard radius closure from point of waste discharge exists for all man-made habitable structures.

If you see someone taking oysters from a closed area please call Louisiana Department of Wildlife & Fisheries (LDWF) 1-800-442-2511. For questions concerning the closures call the Office of Public Health 1-800-256-2775.

Background imagery provided by USGS EarthExplorer and processed by Quantitative Ecological Services, Inc.
Date of imagery 2014.

Not for navigational purposes

This document was printed at a cost of \$ 439.96. In this printing, 478 copies were produced. This document was produced by LDH Office of Public Health, 628 N. 4th Street, Baton Rouge, LA 70821. It was printed in accordance with the standards for printing by State Agencies established pursuant to R.S. 43:31.

2022 MSP 11/22