

November February 2023  
Re-Classification Line

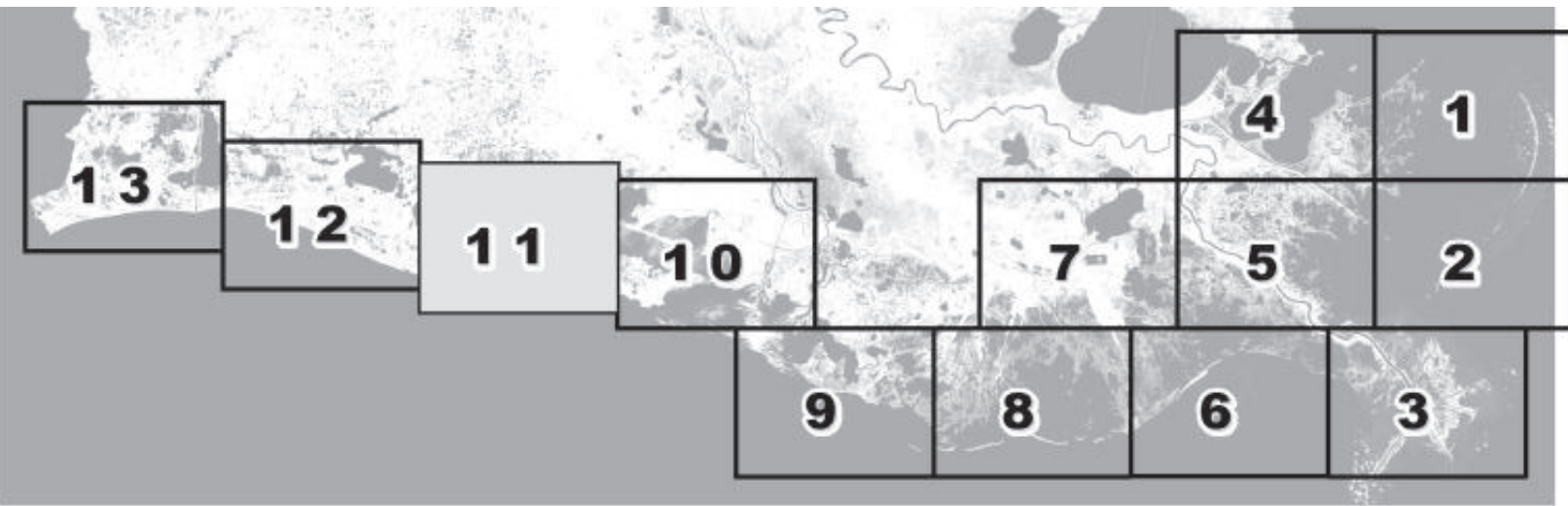


Louisiana Department of Health  
Office of Public Health  
Molluscan Shellfish Program

Refrigeration Requirements for Shellstock  
Harvested for Raw Consumption

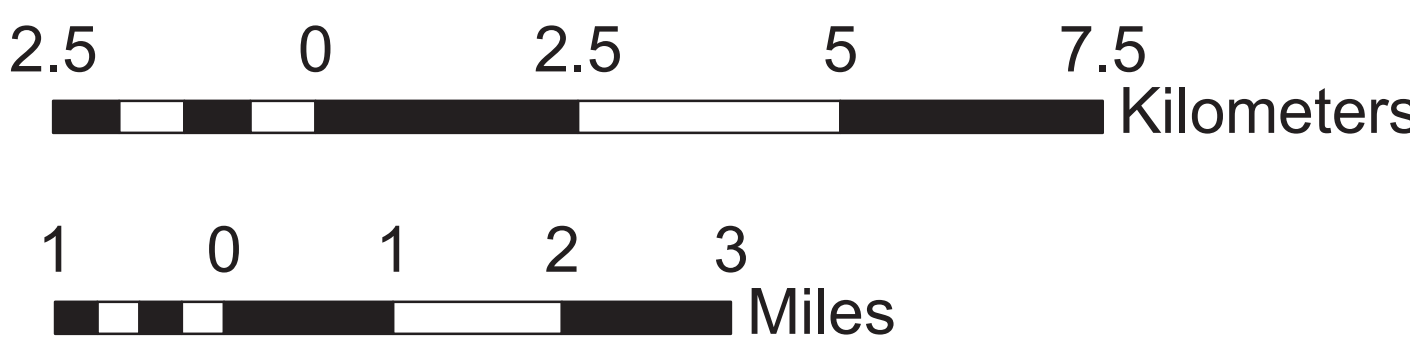
Basin Descriptions  
Barataria Basin - Mississippi River west to Bayou Lafourche  
Pontchartrain Basin - Mississippi state line to the Mississippi River  
Terebonne Basin - Bayou Lafourche to the Atchafalaya River  
VermilionBasin - Growing waters south to the South West Pass and Marsh Island to defined federal watersand from Pt. Chevert to Freshwater Bayou Canal

Max Hrs From Harvest	36 Hrs	8 Hrs	1 Hr
Basin 02	Jan-Feb Dec	Mar-Apr Nov	May-Oct
Basin 03	Jan-Feb Dec	Mar-Apr Nov	Oct
Basin 04	Jan-Feb Dec	Mar-Apr Nov	May-Oct
Basin 06	Jan-Feb Dec	Mar-Apr Nov	May-Oct
Basin 12	Jan-Feb Dec	Mar-Apr Nov	May-Oct



AREA LINES  
CLOSURE LINE

Prohibited Areas



Scale 1:72,000

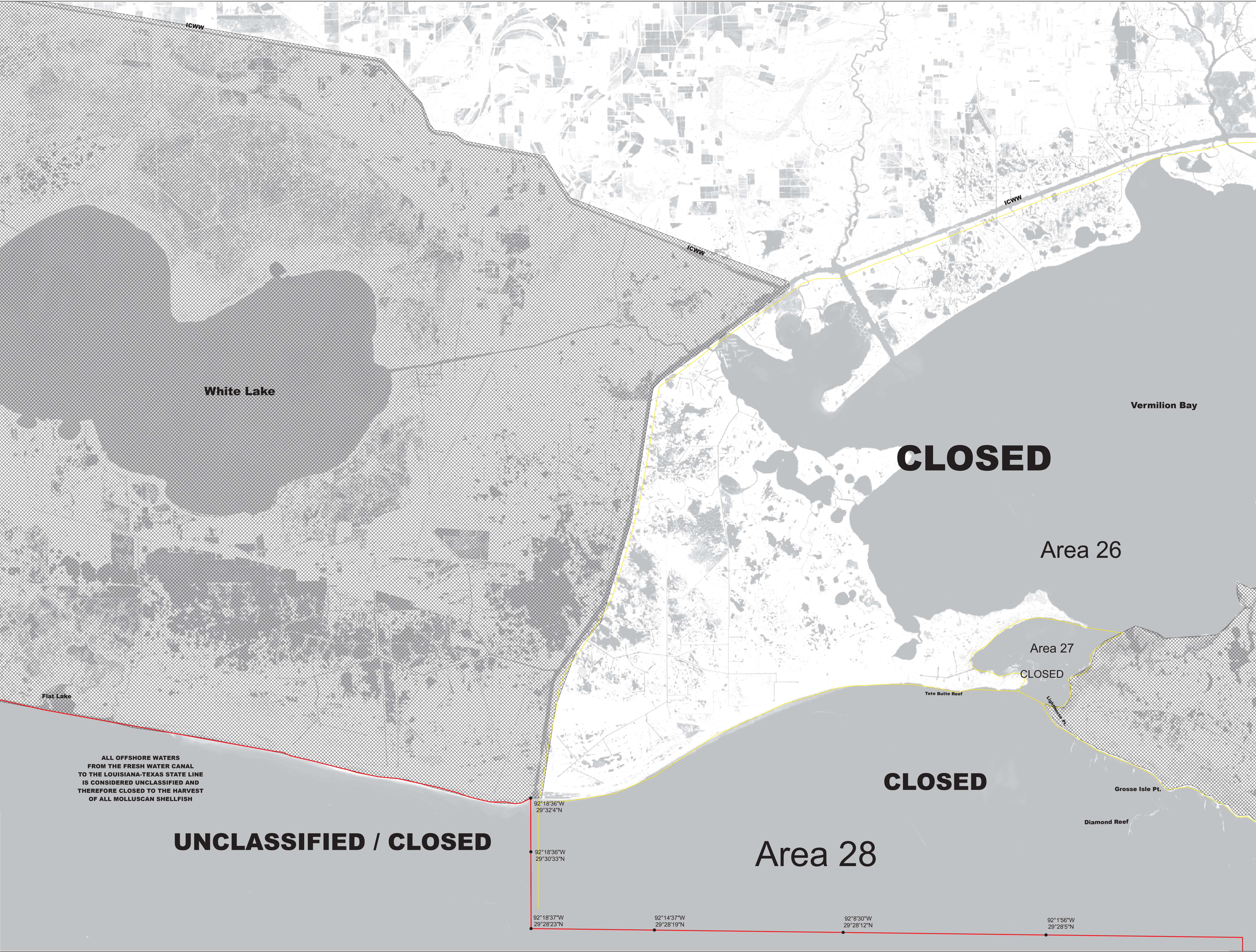
Reference coordinates are in degree minute second  
format Datum NAD83

50 yard radius closure from point of waste  
discharge exists for all man-made habitable structures.

If you see someone taking oysters from a closed area  
please call Louisiana Department of Wildlife & Fisheries  
(LDWF) 1-800-442-2511. For questions concerning the  
closures call the Office of Public Health 1-800-256-2775.

Background imagery provided by USGS EarthExplorer and processed by  
Quantitative Ecological Services, Inc.  
Date of imagery 2014.

Not for navigational purposes



This document was printed at a cost of \$ 439.96. In this printing,  
478 copies were produced. This document was produced by  
LDH/Office of Public Health, 628 N. 4<sup>th</sup> Street, Baton Rouge, LA  
70831. It was printed in accordance with the standards for  
printing by State Agencies established pursuant to R.S. 43:31.