

November February 2023 Re-Classification Line

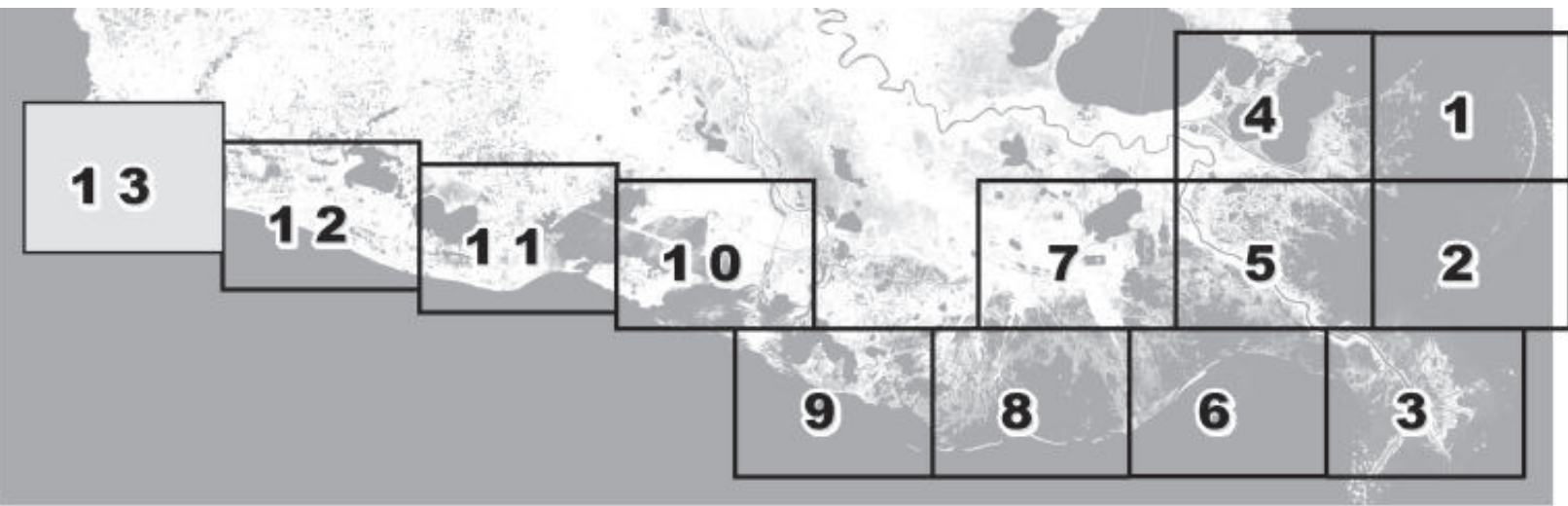


Louisiana Department of Health
Office of Public Health
Molluscan Shellfish Program

Refrigeration Requirements for Shellstock Harvested for Raw Consumption

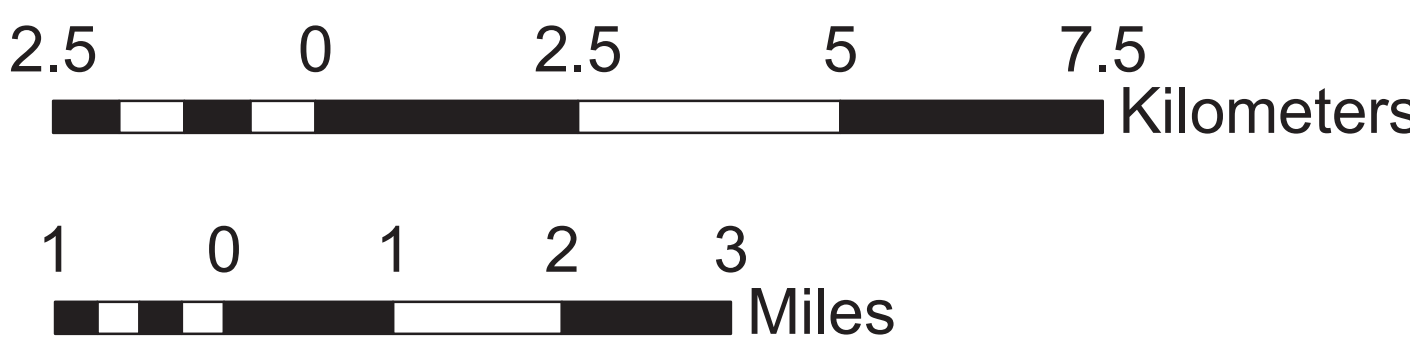
Basin Descriptions
Barataria Basin - Mississippi River west to Bayou Lafourche
Pontchartrain Basin - Mississippi state line to the Mississippi River
Terebonne Basin - Bayou Lafourche to the Atchafalaya River
VermilionBasin - Growing waters south to the South West Pass and Marsh Island to defined federal watersand from Pt. Chevert to Freshwater Bayou Canal

Max Hrs From Harvest	36 Hrs	8 Hrs	1 Hr
Basin 02	Jan-Feb Dec	Mar-Apr Nov	May-Oct
Basin 03	Jan-Feb Dec	Mar-Apr Nov	Oct
Basin 04	Jan-Feb Dec	Mar-Apr Nov	May-Oct
Basin 06	Jan-Feb Dec	Mar-Apr Nov	May-Oct
Basin 12	Jan-Feb Dec	Mar-Apr Nov	May-Oct



AREA LINES
CLOSURE LINE

Prohibited Areas



Scale 1:72,000



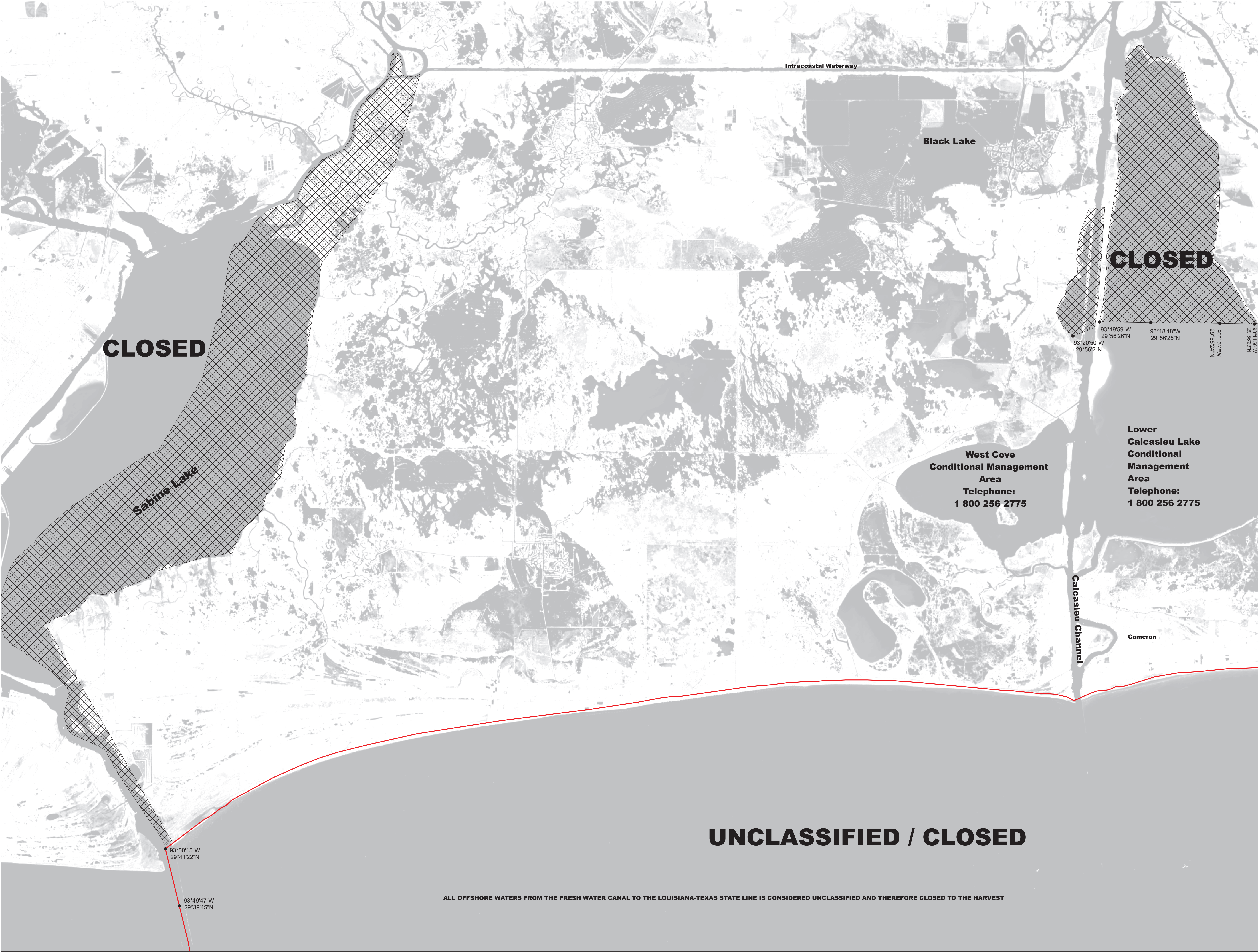
Reference coordinates are in degree minute second
format Datum NAD83

50 yard radius closure from point of waste
discharge exists for all man-made habitable structures.

If you see someone taking oysters from a closed area
please call Louisiana Department of Wildlife & Fisheries
(LDWF) 1-800-442-2511. For questions concerning the
closures call the Office of Public Health 1-800-256-2775.

Background imagery provided by USGS EarthExplorer and processed by
Quantitative Ecological Services, Inc.
Date of imagery 2014.

Not for navigational purposes



This document was printed at a cost of \$ 439.96. In this printing,
478 copies were produced. This document was produced by
LDH Office of Public Health, 628 N. 4th Street, Baton Rouge, LA
70821. It was printed in accordance with the standards for
printing by State Agencies established pursuant to R.S. 43:31.

2023 MSP 11/23