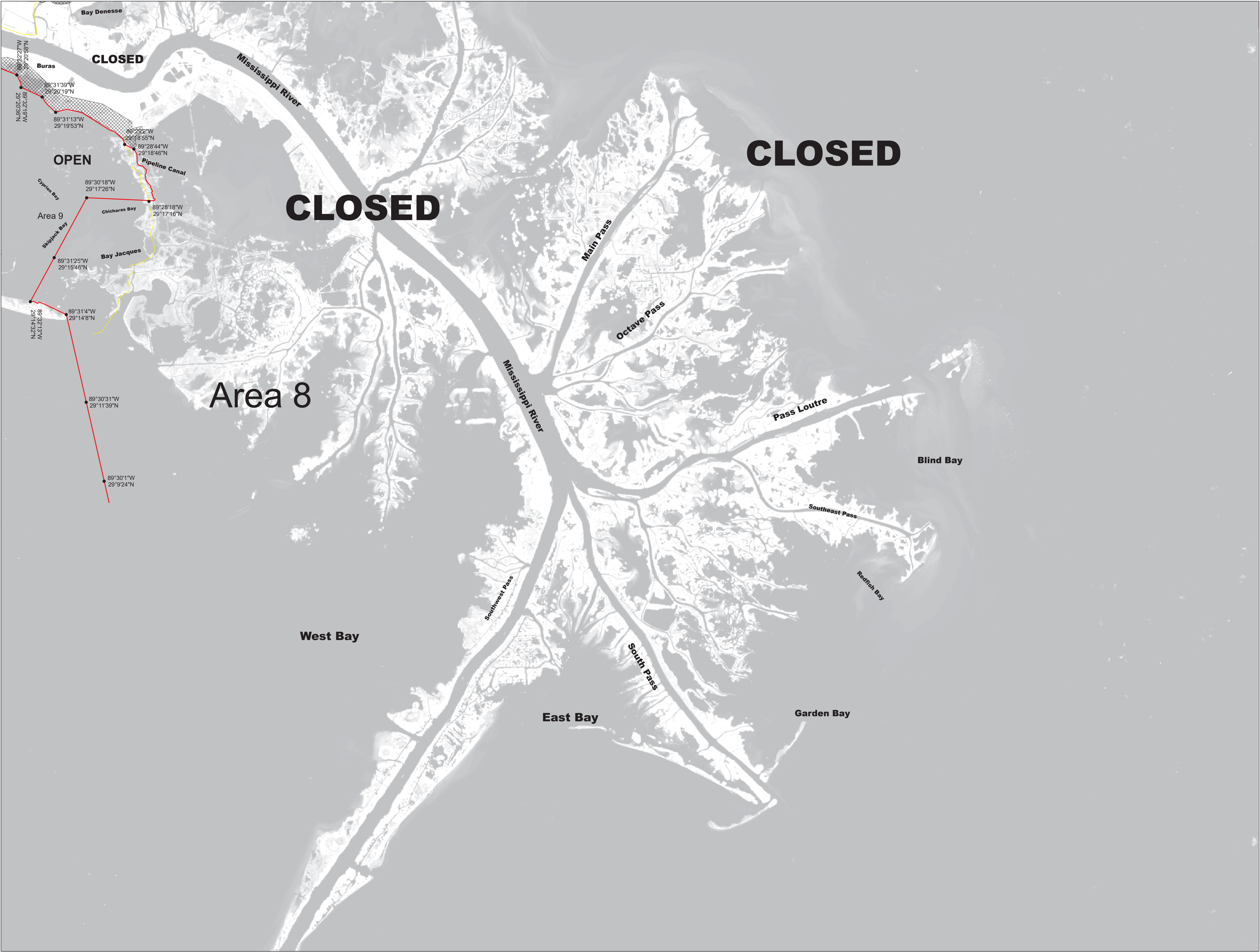


November February 2023
Re-Classification Line



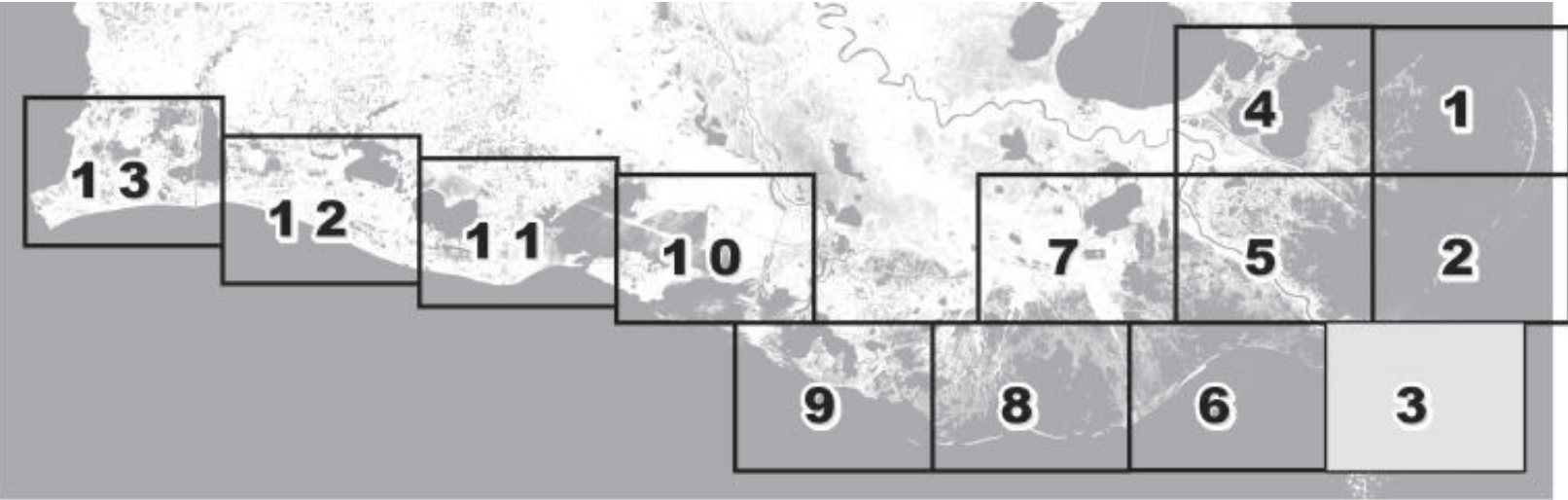
Louisiana Department of Health
Office of Public Health
Molluscan Shellfish Program



Refrigeration Requirements for Shellstock
Harvested for Raw Consumption

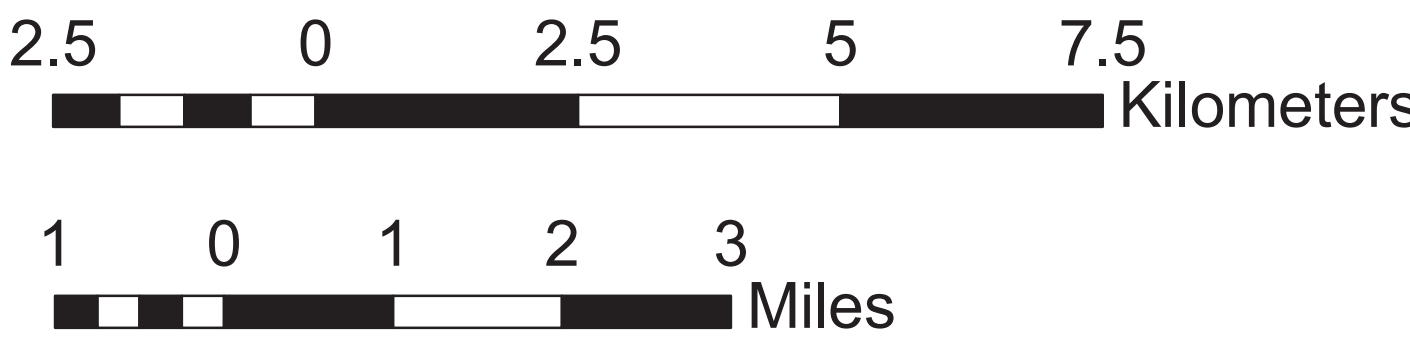
Basin Descriptions
Barataria Basin - Mississippi River west to Bayou Lafourche
Pontchartrain Basin - Mississippi state line to the Mississippi River
Terrebonne Basin - Bayou Lafourche to the Atchafalaya River
VermilionBasin - Growing waters south to the South West Pass
and Marsh Island to defined federal watersand from Pt. Chevert to
Freshwater Bayou Canal

| Max Hrs From Harvest | 36 Hrs | 8 Hrs | 1 Hr |
|----------------------|----------------|----------------|---------|
| Basin 02 | Jan-Feb Dec | Mar-Apr Nov | May-Oct |
| Basin 03 | Jan-Feb Dec | Mar-Apr Nov | Oct |
| Basin 04 | Jan-Feb Dec | Mar-Apr Nov | May-Oct |
| Basin 06 | Jan-Feb Dec | Mar-Apr Nov | May-Oct |
| Basin 12 | Jan-Feb Dec | Mar-Apr Nov | May-Oct |



AREA LINES
CLOSURE LINE

Prohibited Areas



Scale 1:72,000



Reference coordinates are in degree minute second
format Datum NAD83

50 yard radius closure from point of waste
discharge exists for all man-made habitable structures.

If you see someone taking oysters from a closed area
please call Louisiana Department of Wildlife & Fisheries
(LDWF) 1-800-442-2511. For questions concerning the
closures call the Office of Public Health 1-800-256-2775.

Background imagery provided by USGS EarthExplorer and processed by
Quantitative Ecological Services, Inc.
Date of imagery 2014.

Not for navigational purposes

This document was printed at a cost of \$ 439.96. In this printing,
478 copies were produced. This document was produced by
LDH/Office of Public Health, 628 N. 4th Street, Baton Rouge, LA
70821. It was printed in accordance with the standards for
printing by State Agencies established pursuant to R.S. 43:31.