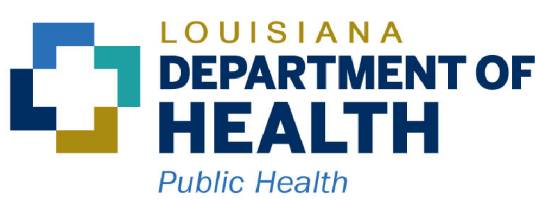


September October 2021  
Re-Classification Line

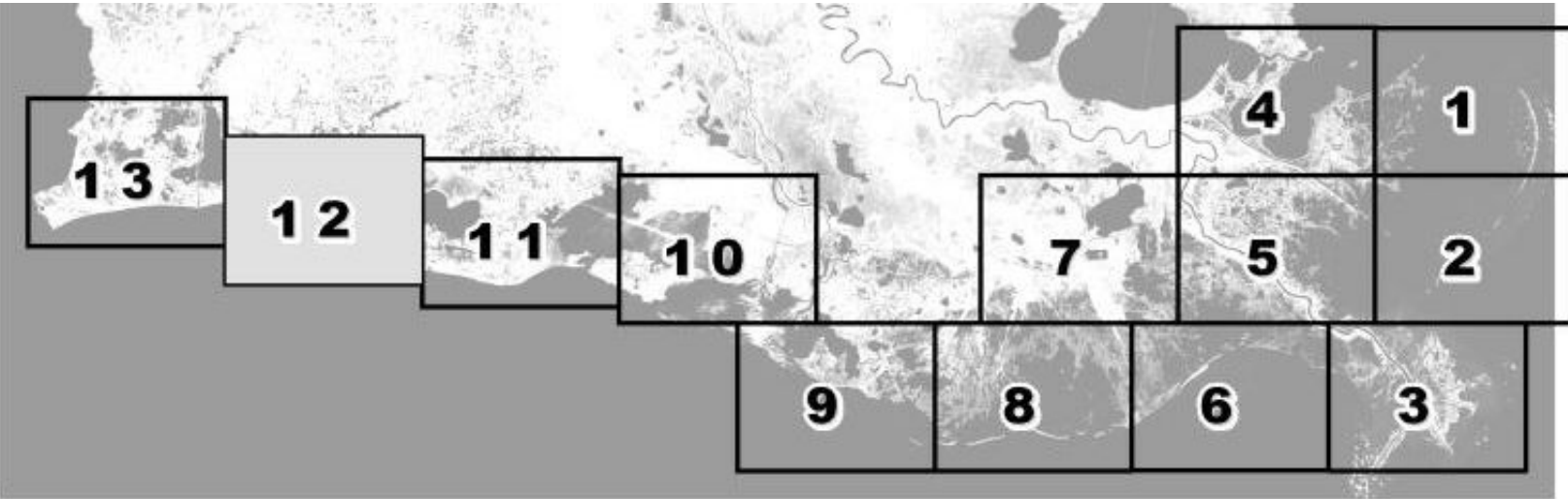


Louisiana Department of Health  
Office of Public Health  
Molluscan Shellfish Program

Refrigeration Requirements for Shellstock  
Harvested for Raw Consumption

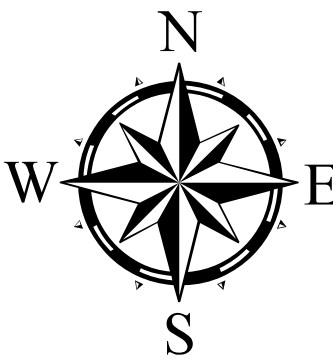
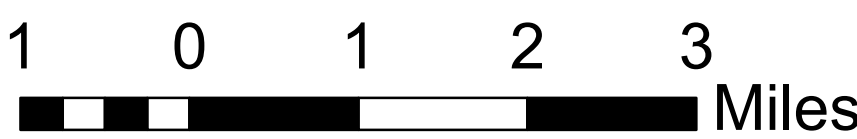
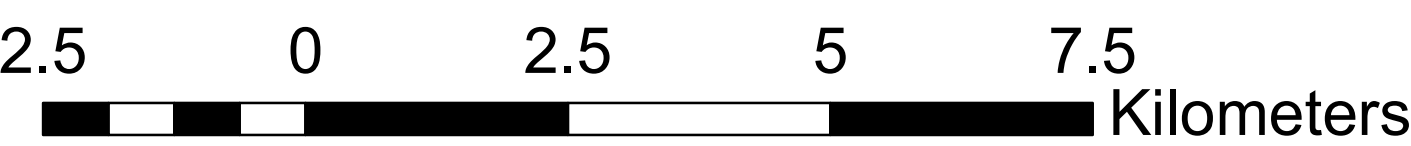
Basin Descriptions  
Basin 02: Barataria- Mississippi River west to Bayou Lafourche  
Basin 03: West Cove and Lower Calcasieu Lake Conditional Management Areas  
Basin 04: Mississippi State Line west to the Mississippi River  
Basin 06: Atchafalaya River west to Freshwater Bayou Canal including Vermilion, East Cote Blanche, and West Cote Blanche Bays  
Basin 12: Terrebonne - Bayou Lafourche to the Atchafalaya River

Max Hrs From Harvest	36 Hrs	8 Hrs	1 Hr
Basin 02	Jan-Feb Dec	Mar-Apr Nov	May-Oct
Basin 03	Jan-Feb Dec	Mar-Apr Nov	Oct
Basin 04	Jan-Feb Dec	Mar-Apr Nov	May-Oct
Basin 06	Jan-Feb Dec	Mar-Apr Nov	May-Oct
Basin 12	Jan-Feb Dec	Mar-Apr Nov	May-Oct



Prohibited Areas

CLOSURE LINE  
AREA LINES



Scale 1:72,000

Reference coordinates are in degree minute second format Datum NAD83

50 yard radius closure from point of waste discharge exists for all man-made habitable structures.

If you see someone taking oysters from a closed area please call Louisiana Department of Wildlife & Fisheries (LDWF) 1-800-442-2511. For questions concerning the closures call the Office of Public Health 1-800-256-2775.

Background imagery provided by USGS EarthExplorer and processed by Quantitative Ecological Services, Inc.  
Date of imagery 2014.

Not for navigational purposes



This document was printed at a cost of \$ 439.96. In this printing, 478 copies were produced. This document was produced by LDH/Office of Public Health, 628 N. 4<sup>th</sup> Street, Baton Rouge, LA 70821. It was printed in accordance with the standards for printing by State Agencies established pursuant to R.S. 43:31.

2021 MSP 09/21