

# September October 2021 Re-Classification Line



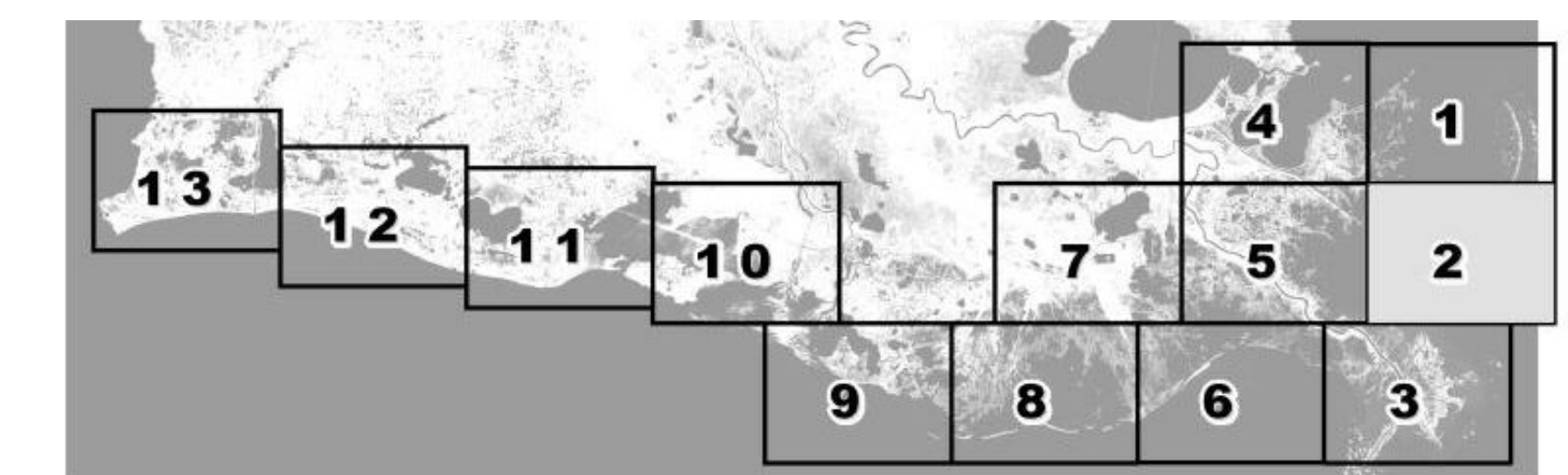
Louisiana Department of Health  
Office of Public Health  
Molluscan Shellfish Program



### Refrigeration Requirements for Shellstock Harvested for Raw Consumption

**Basin Descriptions**  
**Basin 02:** Barataria- Mississippi River west to Bayou Lafourche  
**Basin 03:** West Cove and Lower Calcasieu Lake Conditional Management Areas  
**Basin 04:** Mississippi State Line west to the Mississippi River  
**Basin 06:** Atchafalaya River west to Freshwater Bayou Canal including Vermilion, East Cote Blanche, and West Cote Blanche Bays  
**Basin 12:** Terrebonne - Bayou Lafourche to the Atchafalaya River

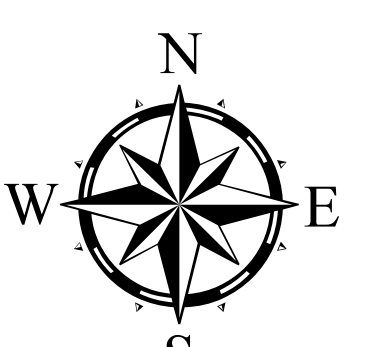
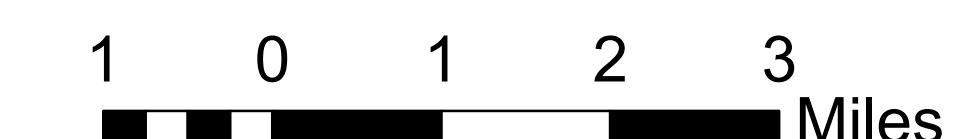
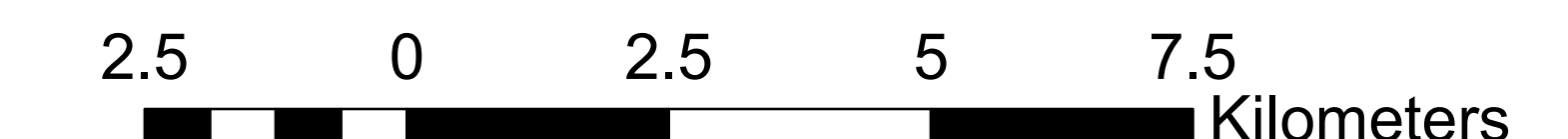
Max Hrs From Harvest	36 Hrs	8 Hrs	1 Hr
<b>Basin 02</b>	Jan-Feb Dec	Mar-Apr Nov	May-Oct
<b>Basin 03</b>	Jan-Feb Dec	Mar-Apr Nov	Oct
<b>Basin 04</b>	Jan-Feb Dec	Mar-Apr Nov	May-Oct
<b>Basin 06</b>	Jan-Feb Dec	Mar-Apr Nov	May-Oct
<b>Basin 12</b>	Jan-Feb Dec	Mar-Apr Nov	May-Oct



**Prohibited Areas**

**CLOSURE LINE**

**AREA LINES**



**Scale 1:72,000**

Reference coordinates are in degree minute second format Datum NAD83

50 yard radius closure from point of waste discharge exists for all man-made habitable structures.

If you see someone taking oysters from a closed area please call Louisiana Department of Wildlife & Fisheries (LDWF) 1-800-442-2511. For questions concerning the closures call the Office of Public Health 1-800-256-2775.

Background imagery provided by USGS EarthExplorer and processed by Quantitative Ecological Services, Inc. Date of imagery 2014.

Not for navigational purposes

This document was printed at a cost of \$439.96. In this printing, 478 copies were produced. This document was produced by LDH Office of Public Health, 628 N. 4<sup>th</sup> Street, Baton Rouge, LA 70821. It was printed in accordance with the standards for printing by State Agencies established pursuant to R.S. 43:31.  
2021 MSP 09/21