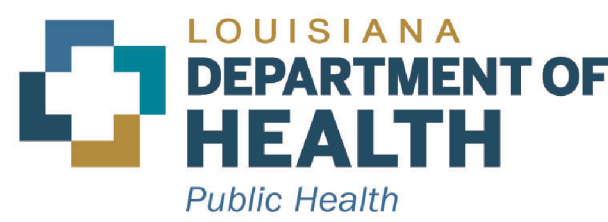


September October 2025 Re-Classification Line

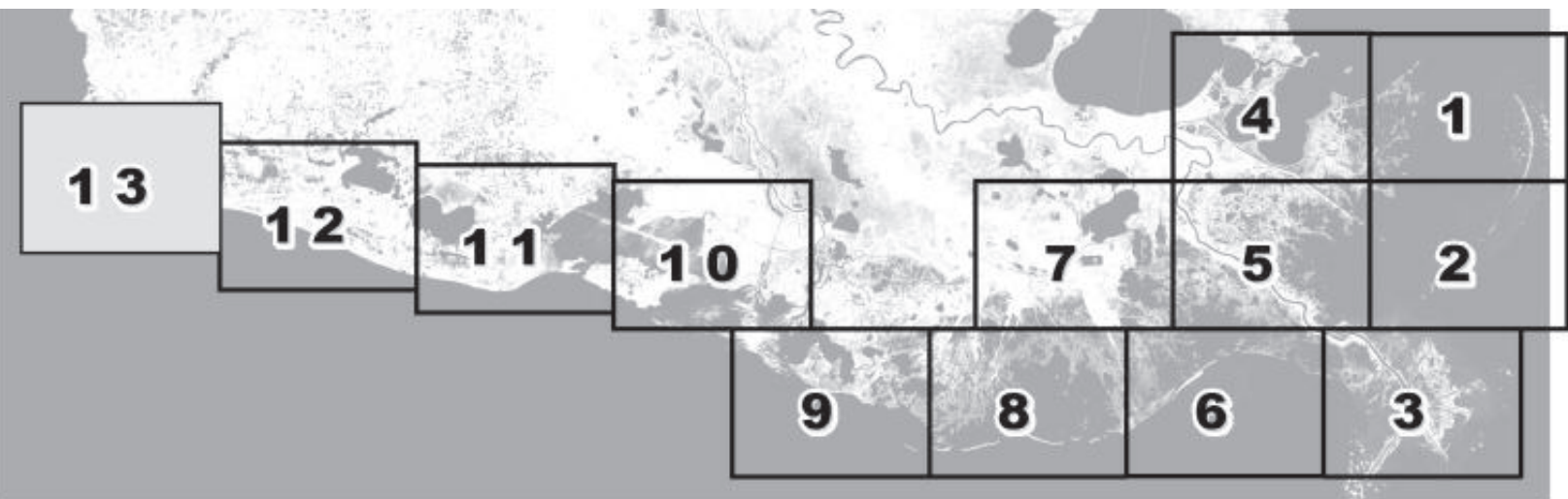


Louisiana Department of Health Office of Public Health Molluscan Shellfish Program

Refrigerated Requirements for Shellstock Harvested for Raw Consumption

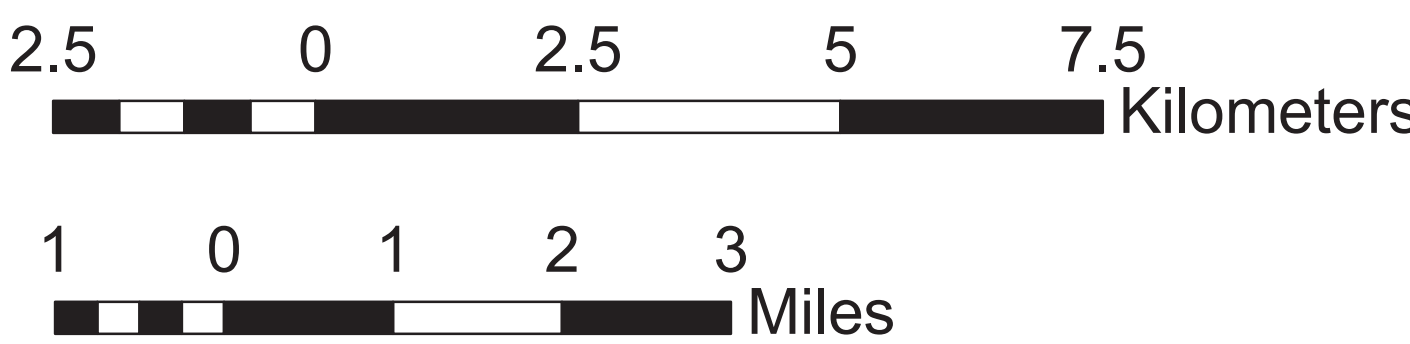
Basin Descriptions
Barataria Basin - Mississippi River west to Bayou Lafourche
Pontchartrain Basin - Mississippi state line to the Mississippi River
Terebonne Basin - Bayou Lafourche to the Atchafalaya River
VermilionBasin - Growing waters south to the South West Pass and Marsh Island to defined federal watersand from Pt. Chevert to Freshwater Bayou Canal

| Max Hrs from Harvest | 36 Hrs | 8 Hrs | 1 Hr |
|----------------------|----------------|----------------|---------|
| Basin 2 | Jan-Feb Dec | Mar-Apr Nov | May-Oct |
| Basin 3 | Jan-Feb Dec | Mar-Apr Nov | Oct |
| Basin 4 | Jan-Feb Dec | Mar-Apr Nov | May-Oct |
| Basin 6 | Jan-Feb Dec | Mar-Apr Nov | May-Oct |
| Basin 12 | Jan-Feb Dec | Mar-Apr Nov | May-Oct |



Area Lines
Closure Area

Prohibited Areas



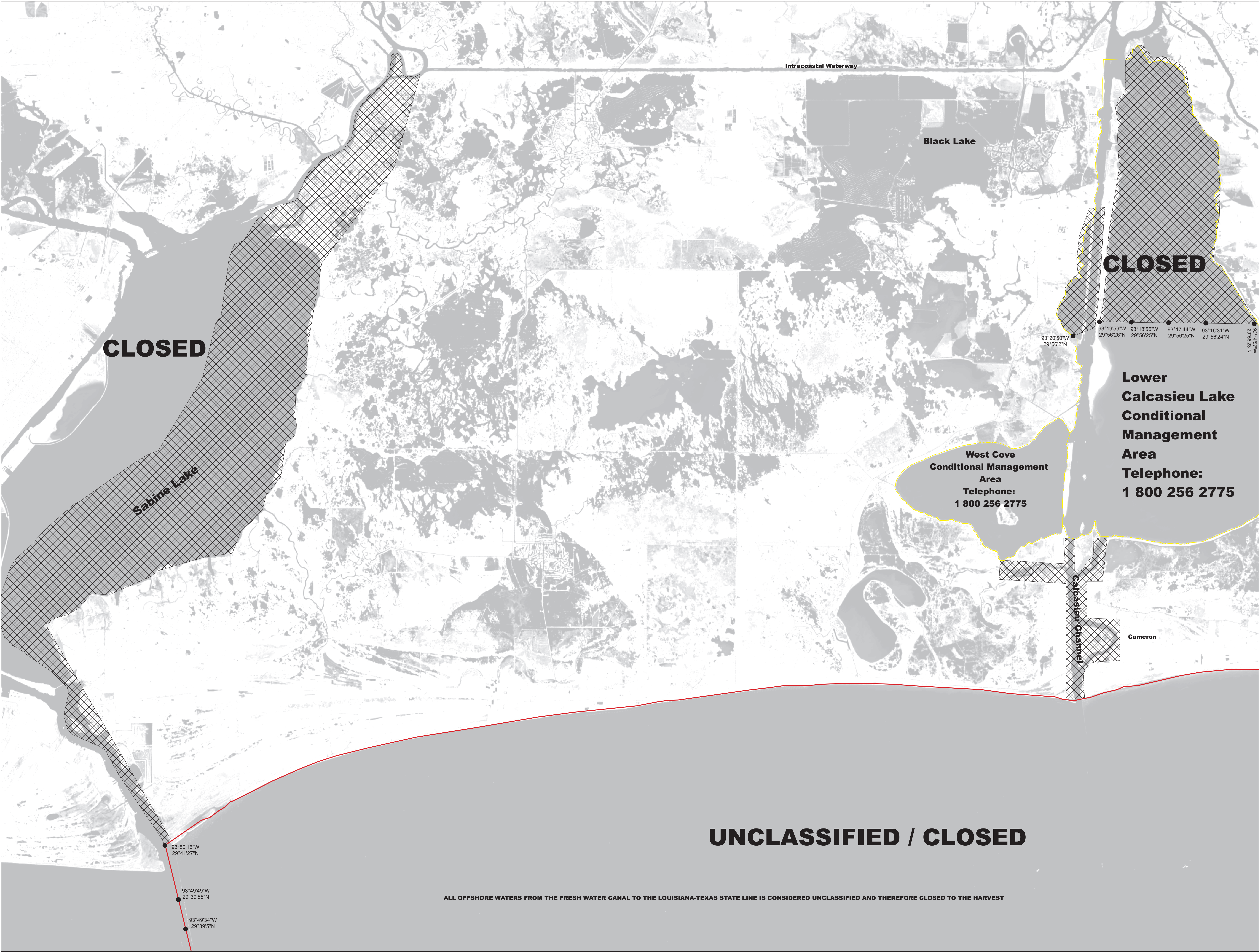
Scale 1:72,000



50 yard radius closure from point of waste discharge exists for all man-made habitable structures.

Background imagery provided by USGS EarthExplorer and processed by Quantitative Ecological Services, Inc.
Date of imagery 2014.

Not for navigational purposes



This document was printed at a cost of \$ 1,700.96. In this printing, 478 copies were produced. This document was produced by LDH/Office of Public Health, 628 N. 4th Street, Baton Rouge, LA 70821. It was printed in accordance with the standards for printing by State Agencies established pursuant to R.S. 43:31.

2025 MSP 09/25