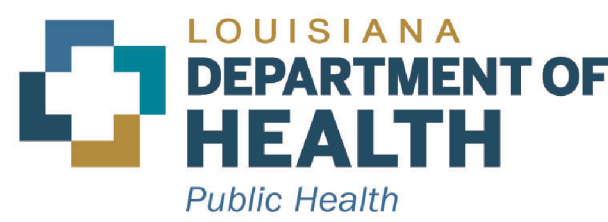


September October 2025 Re-Classification Line



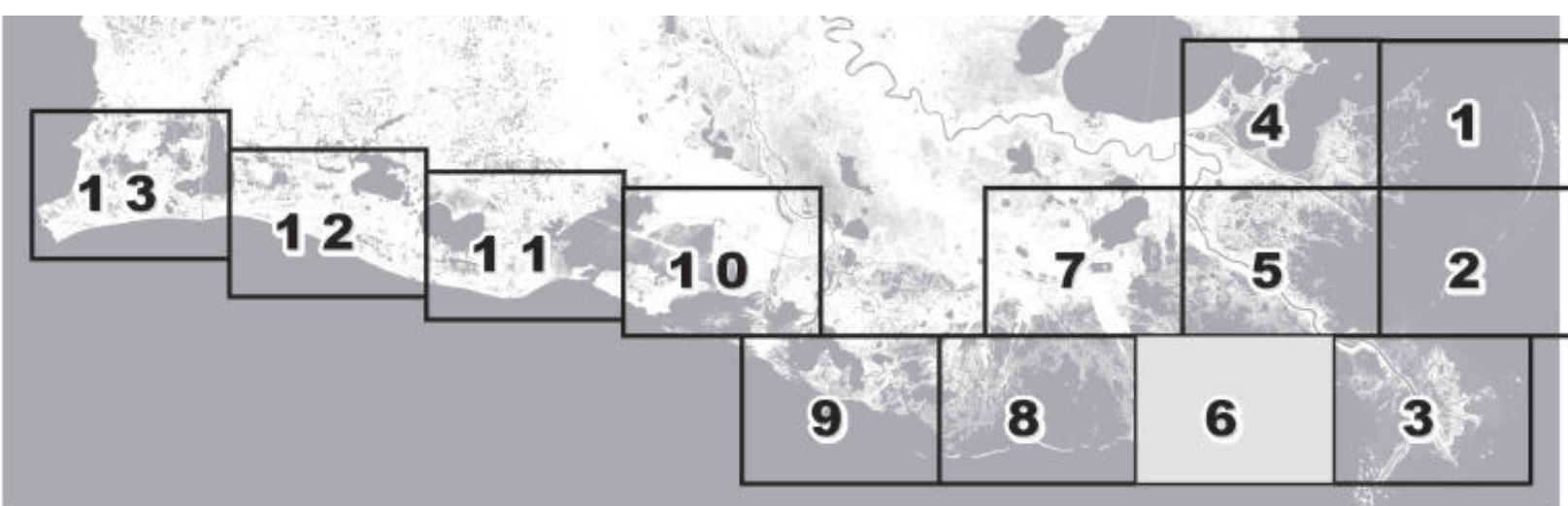
Louisiana Department of Health Office of Public Health Molluscan Shellfish Program

Refrigerated Requirements for Shellstock Harvested for Raw Consumption

Basin Descriptions
Barataria Basin - Mississippi River west to Bayou Lafourche
Pontchartrain Basin - Mississippi state line to the Mississippi River
Terebonne Basin - Bayou Lafourche to the Atchafalaya River
VermilionBasin - Growing waters south to the South West Pass
and Marsh Island to defined federal watersand from Pt. Chevert
to Freshwater Bayou Canal

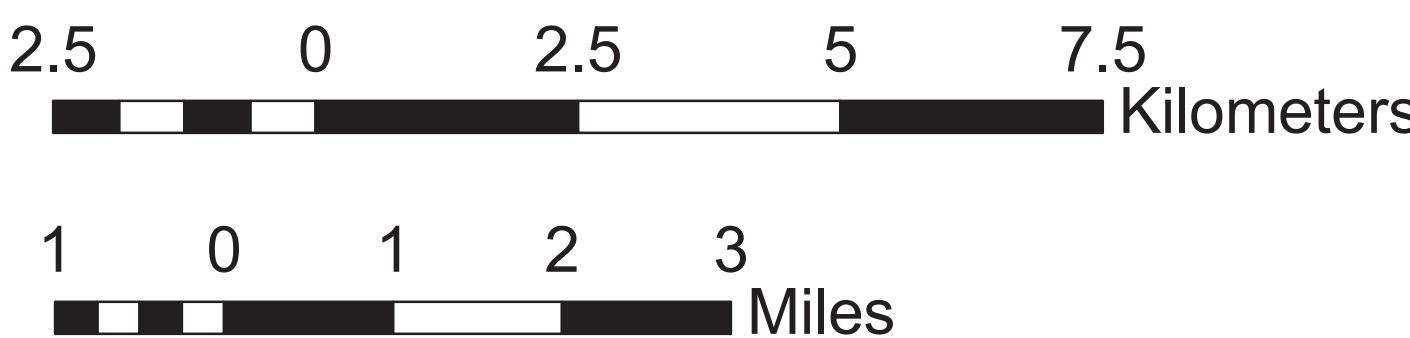
Max Hrs from Harvest	36 Hrs	8 Hrs	1 Hr
----------------------	--------	-------	------

Basin 2	Jan-Feb Dec	Mar-Apr Nov	May-Oct
Basin 3	Jan-Feb Dec	Mar-Apr Nov	Oct
Basin 4	Jan-Feb Dec	Mar-Apr Nov	May-Oct
Basin 6	Jan-Feb Dec	Mar-Apr Nov	May-Oct
Basin 12	Jan-Feb Dec	Mar-Apr Nov	May-Oct



Area Lines
Closure Area

Prohibited Areas



Scale 1:72,000



50 yard radius closure from point of waste
discharge exists for all man-made habitable structures.

Background imagery provided by USGS EarthExplorer and processed by
Quantitative Ecological Services, Inc.
Date of imagery 2014.

Not for navigational purposes



This document was printed at a cost of \$ 1,700.96. In this
printing, 478 copies were produced. This document was
produced by LDH/Office of Public Health, 638 N. 4th Street,
Baton Rouge, LA 70821. It was printed in accordance with the
standards for printing by State Agencies established pursuant to
R.S. 43:31.
2025 MSP 09/25