

# Going the Distance: Emerging Infections for Long-term Care Settings

*Louisiana Department of Health  
Office of Public Health  
Infectious Disease Epidemiology Section*

Viral Respiratory Diseases Detection and Containment in Long-term Care Facilities Virtual Workshop

October 22, 2020

9:00 a.m. until 12:30 p.m.



# Purpose

Preventing viral respiratory diseases in long-term care settings will reduce morbidity and mortality of vulnerable patients. The Infectious Disease Epidemiology Section of the Louisiana Office of Public Health will hold a virtual, half-day workshop. This educational activity targets infection preventionists employed in long-term care settings as well as infectious disease personnel across the provider spectrum who have roles in infection surveillance and reporting.

This activity has been submitted to Louisiana State Nurses Association for approval to award contact hours. Louisiana State Nurses Association is accredited as an approver of nursing continuing professional development by the American Nurses Credentialing Center's Commission on Accreditation.

Please note that your participation at the entire workshop is required to receive continuing education units. Certificates will be emailed upon completion of the evaluation. Email [marceia.walker@la.gov](mailto:marceia.walker@la.gov) with questions.



# Welcome

David Holcombe, MD  
Medical Director and Administrator  
Louisiana Office of Public Health Region 6  
HAI/AR Multidisciplinary Advisory Committee Member



# Agenda



Time	Activity	Presenter
9:00 a.m.	Welcome and Introductions	Dr. David Holcombe
9:15 a.m.	Hurdles and High Jumps	Julie Hand
10:00 a.m.	The Gold Standard	Ashley Terry
10:30 a.m.	Vaccination Pole Vault	Erica Washington
11:00 a.m.	Break	
11:15 a.m.	Containment Marathon	Julie Hand
11:45 a.m.	Detection Dash	Alexa Ramirez
12:15 p.m.	Sprinting to the Finish	Erica Washington
12:30 p.m.	Conclusion	

# Presenters



Julie Hand  
*Viral Respiratory Disease  
Surveillance Coordinator*



Alexa Ramirez  
*HAI Surveillance  
Epidemiologist*



Ashley Terry  
*AR Surveillance  
Epidemiologist*



Erica Washington  
*HAI/AR Program  
Coordinator*

*Special thanks to Marceia Walker, IDEpi Education Coordinator, and other public health professionals & partners in attendance.*

“

*The speaker does not have a financial or non-financial relationship with a commercial interest that would create a conflict of interest with this presentation.* ”

## **Disclosure Statement**

# Poll: Question #1

*Which setting do you represent?*

- ▶ Short-term acute care
- ▶ Long-term care
- ▶ Inpatient rehabilitation
- ▶ Dialysis
- ▶ Other

Polls are not anonymous. You must select an answer to participate fully in this activity!

## Poll: Question #2

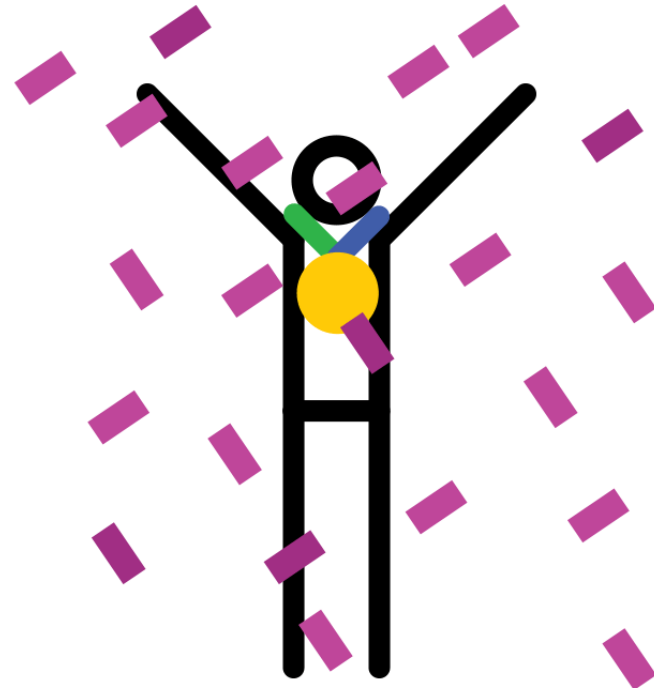
Polls are not anonymous. You must select an answer to participate fully in this activity!

*What do you hope to get out of today's presentation?*

Select all that apply.

- ▶ Improve coordination with public health
- ▶ Ability to quickly identify infectious persons
- ▶ Closely collaborate with facilities in my patient/geographic network
- ▶ Improve my understanding of infection control and infectious disease transmission
- ▶ Other
- ▶ Not sure yet





# Questions?

