

LOUISIANA

Public Health

# Newsletter

LOUISIANA STATE BOARD OF HEALTH



J. J.  
[Signature]

## HEARING CONSERVATION PROGRAM IS BENEFICIAL TO THOUSANDS OF LA. SCHOOLCHILDREN

This school year will have a special meaning for many children in Louisiana. Some will discover, for the first time, that they have never had good hearing; others will be told they have hearing loss that can be corrected. Students who seem dull and listless at the beginning of the school term will finish the scholastic year as normally alert boys and girls.

These things will come about through a hearing conservation program, now considered part of the school health program in 35 parishes.

Most of our education comes through sight and sound. If a child cannot hear well, has never had normal hearing, how shall he be educated? What is the psychological impact upon a child with a hearing loss? Much hearing loss can be prevented if it is discovered and treated soon enough.

To insure the early discovery, diagnosis and treatment of hearing loss among our school children, the Louisiana State Board of Health, Section of Dental and School Health, organized a hearing conservation program in 1954. Like most public health programs, this one involves the cooperation of other public agencies and medical specialists, as well as teachers, parents and lay volunteers.

Soon after the program was organized, screening by audiometric testing became accepted as a regular activity in a few schools. Followup for children who seemed to have hearing difficulty began with attendance at diagnostic clinics held by otologists at the health units, in late 1955.

By the end of 1957 the program was extended to 21 parishes, with a total of 103 clinics held and 2,743 children examined after screening.



SHERYL RIVIERE'S audiometric reading gives her a clean bill of hearing health. Clifton Lawrence, administrative audiologist, takes the audiometer reading. Observing is Sheryl's mother, Mrs. Leonce Riviere. (Terrebonne Press Photo)

In August 1957 an administrative audiologist was employed by the Board to direct the program. A central record and report system was developed, and program procedures were standardized. An otological advisory committee was appointed to advise the health department on medical aspects of the program.

During the 1958-59 biennium medical diagnostic services were provided for 3702 children. Approximately 115,400 children in 31 parishes (outside Orleans) received preliminary screening.

Children are examined by otologists in the presence of parents. Every effort is made to encourage parents to place children with hearing defects under medical supervision, with help from other agencies, as needed.

In some cases, treatment is a simple matter. Some cases require a minor operation. A few call for immediate attention in order to avoid serious consequences. If a student's hearing loss is incurable special training is available; hearing aid devices can be obtained. When a child's hearing loss becomes known special allowances can be made to increase his ability to learn.

According to Dr. Paul Cook, chief of the dental and school health section, the program is limited only by lack of funds for additional trained personnel and equipment. The Board is now seeking a second audiologist to help train public health nurses, teachers and others in the use of the audiometer, and to give consultative service.

(Continued on page 3)

The Louisiana State  
Board of Health

Hon. James H. Davis  
Governor

William J. Rein, M.D.  
State Health Officer

M. E. Kossack, M.S.P.H., Director

Iris Day, Editor

Duplication process supervised by  
Louis Bernier

The NEWSLETTER is published monthly by and for the employees of the Louisiana State Board of Health through the Division of Public Health Education, Louisiana State Office Building, 325 Loyola Ave., New Orleans 12. It is an unofficial and informal publication, and does not supplement or alter the Board of Health's operations, manuals, administrative rules or regulations. Anything of an official nature will be so labeled. Permission is hereby granted to reprint any material appearing in the Newsletter.

## ALL ABOUT US

It was mostly business, related to the nutrition section's new heart study project (July-Aug. Newsletter), that took MISS MARGARET MOORE to Guatemala, but she also had a chance to do some sight-seeing and enjoy the magnificent scenery. MISS MARIE L. SKELLENGER has been assigned to the heart-nutrition project.

Tab and Analysis section reports that seven of their members took "wonderful trips" this year, ranging from the Bahamas to Canada.

VERA BEYER, personnel office, vacationed at Hot Springs, Ark.; LYNN WORLEY, procurement section, and BETTY GONDRELLA, statistics, went to Mexico; and KITTY BURKE, administrative services, chose beautiful West Virginia as her vacation spot.

Word has been received that DR. M. J. PICINICH, WBR director, has been licensed as a ham radio operator.

Congratulations to HOMER J. OSBORN, x-ray technician, recipient of a Certificate of Merit from the Mayoralty of New Orleans for 25 years of outstanding service in his field.

GRACE D. MONK joined the nursing staff of the Vernon unit; she is a

June 1958 graduate of Northwestern State college. ANNA BELLE STEWART, PHN, Vernon, was appointed to make a survey of nursing home facilities by the Leesville Council on the Aging.

MRS. DOROTHY MAHER, secretary to the State Health Officer, underwent surgery on her foot at Touro, was back at her busy desk a week later.

Many public health workers attended the wedding, Sept. 3, of JUDITH LEE CENTANNI, daughter of Dr. L.R.B. Centanni, Jefferson director.

We had a chance to observe the Lafayette clerical staff in action recently, and were impressed by the pleasant manner with which the girls received visitors. RAY LANDRY was spending his first day as new health educator getting acquainted with staff and layout. Everyone was pleased that RUBY GIROIR, PHN, was returning to work after a long illness.

Sympathy is expressed to LOUIE LEE, Ouachita, death of brother; MARY K. HOTARD, Jefferson, death of grandfather; ADELAIDE LE BEAU, death of mother; LUANA FACIANE, St. Tammany, death of husband; SUE SANFORD, Central Lab, death of grandfather; PEARL H. JOHNSON, St. Tammany, death of sister; MILDRED HOLMES, vital statistics, death of brother-in-law; HELEN G. NOEL, West Baton Rouge, death of brother-in-law; and PIERRE MORERE, Jefferson, death of father.

MRS. ELIZABETH HARTT, Beauregard parish health nurse, and MRS. WAVA MOUTON, Southwest regional nurse, were commended by the superintendent of the Louisiana Correctional and Industrial school for their work in connection with the visit of the x-ray unit to the school.

The Louisiana Division of American Cancer Society awarded fifteen and ten year certificates, respectively, to DR. GUILLERMO VASQUEZ, director of the Calcasieu-Lake Charles health unit, and MRS. MAMIE LEDBETTER, clerical supervisor, in appreciation for "the loyal and val-

uable service to the control of cancer" rendered by them. As DR. ANDREW HEDMEG, director of local health services noted, "It is always a pleasure to receive such communications about our personnel."

The films are rolling again, and bright-eyed JOYCE MUSACCHIA, film librarian, looks forward to another record season. The health education section sadly missed the presence of FLORIAN LEACH, motion picture projector operator, now recovered from a heart attack.

Also our best wishes for a good recovery to HILTON SCHAUBHUT, records consultant, recuperating after surgery at Baptist hospital. Another recent hospital patient was MAXINE JACKSON, typist clerk, Central Office, now back at work after a check-up at Ochsner.

DR. W. J. REIN, state health officer, returned to work with his leg in a cast, result of a broken small bone in his foot.

And, finally, welcome to VIRGINIA CAILLET, steno-clerk, public health training office.

## HURRY

Enter Newsletter

PHOTO CONTEST

3 Valuable PRIZES

Taking annual leave? Don't forget your camera! Remember, only black-and-white prints may be entered in the Newsletter Photo Contest. We're receiving more photographs than we can publish in any single issue, so if you don't see your photo please don't be discouraged. Whether they appear in the Newsletter or not, all prints received in the contest will be judged in the finals.

Be sure to identify all persons in each photograph, and also identify the cameraman, by name, job title, and health unit. Send your entries to the Newsletter, Louisiana State Board of Health, Post Office Box 630, New Orleans 7.

# HEARING...

Continued from page 1

"We have had requests from many school officials for assistance in setting up the hearing conservation program in their schools," Dr. Cook said. "Actually four specialists are needed to provide adequate statewide consultation."

The general organization of the Louisiana Hearing Conservation Program follows the recommendations of the American Medical Association and the Louisiana State Medical Society. Specific medical guidance is provided by the Otological Advisory Committee to the state Board of Health. The state Department of Education cooperates in all aspects of the program and general policy is jointly determined.

A hearing diagnostic clinic held in Terrebonne parish last spring was reported by the Houma Star News and the Terrebonne Press. Their staff photos illustrate the procedures described above.



DR. W. J. HAGEN, an ear, nose and throat specialist, traced Barbara Jane Cunningham's hearing defect to a tonsil-adenoid condition. He advised her mother, Mrs. J. C. Cunningham, (left) that Barbara should have her tonsils and adenoids removed and that good hearing should be restored after the operation. (Houma Courier Photo)

Films: Deafness in Children (25 min.); The Ears and Hearing (11 min.); Ears that Hear (15 min.); The Function of the Ear in Health and Disease (32 min.); The Joy of Listening (13 min.); Pay Attention (25 min.); Thursday's Children (22 min.); You and Your Ears (8 min.); Your Children's Ears (20 min.).

Pamphlets: The Child With a Hearing Loss; How to Protect Your Hearing; Take Care of Your Hearing.

\*\*\*\*\*  
A possible sign of times to come? When the Association of State and Territorial Health Officers decides to petition the Congress, through the Surgeon General for substantially increased grant assistance to stimulate the development, improvement and expansion of services in: "occupational health, accident prevention, the aging and chronically ill, alcoholism, heart disease, cancer, migrant labor and other newer aspects of public health?"

## USPHS Announces Four Staff Changes

Several staff changes in the U.S. Public Health Service which became effective July 1 have been announced by Surgeon General Leroy E. Burney.

Dr. David E. Price is now Deputy Director of the National Institute of Health. He was formerly Chief of the Bureau of State Services.

Dr. Theodore J. Bauer succeeded Dr. Price as Chief of the Bureau of State Services. He had formerly been Deputy Chief.

Dr. Joseph Hanford Gerber became Director of the Center for Aging Research of the National Institute of Health. He was formerly Medical Officer in charge of the Indian Health Area Office, Aberdeen, South Dakota.

Dr. Clarence A. Smith is now Chief of the Communicable Disease Center in Atlanta, Ga. He had been Deputy Chief since 1957.

\*\*\*\*\*

Grades of all parish dairies, milk producers and milk distributors, announced by health units, were published in the Allen Parish News, the Bernice News (Union) and the Opelousas Daily World (St. Landry), this summer.

## Project HOPE Outfits Medical Training Ship

Recognition that health is essential to the attainment of national dignity is the basis of the People-to-People Program called Project HOPE.

Project HOPE is an organization which is in the process of outfitting and staffing a mothballed hospital ship, the USS Consolation, as a floating medical center. The ship will visit countries in Southeast Asia during its first year of operation.

The Project's primary objective will be to bring to the medical and health people of other countries the latest medical information and techniques developed by the American medical professions. The ship will be staffed with both full-time and rotating medical personnel. The \$3.5 million needed to operate the ship for a year will be made up of contributions from private sources.

\*\*\*\*\*

I don't feel the least hostile to young people or bothered about them. I don't understand them, but when I was young, people didn't understand me. It's a perfectly natural process.

E. M. Forster

# PHN Membership in State Group Totals 98 Percent

Ninety-eight per cent of Louisiana's public health nurses belong to the State Nurses Association through their separate districts, according to Miss Lillian Jeffers, director of the nursing division.

We are proud of this membership because it is one way of maintaining our professional status," Miss Jeffers said. "It also helps the state in its effort to improve salaries and working conditions for nurses."

Shreveport, Monroe, Ruston, Lake Charles, St. Landry-Evangeline, Lafayette, Florida parishes and Baton Rouge districts all claim one hundred per cent membership. In each of the Alexandria and New Orleans districts full public health membership is short by one nurse.

Miss Jeffers explained that periodic resurvey of nursing resources and needs in Louisiana is one of the cooperative programs in which the state Board of Health participates with the state Nurses Association. "One of the important aims of these periodic resurveys is to stimulate individuals and groups to study the state's nursing situation and to participate in programs which will strengthen the health of Louisiana through better nursing programs."

"The quality of nursing representation which we need at the state, national and international (WHO) levels is dependent upon the monetary and other contributions of the individual nurse through her district," the director said. "Leadership in public health nursing is not only invested in Central Office in New Orleans, but extends to every nurse in every parish."

\*\*\*\*\*

Everybody's heart is open, you know, when they have recently escaped from severe pain, or are recovering the blessing of health.



## RABIES ROUNDUP

Don't mix young people and young dogs is the advice of the authors of "Epidemiology of Dog Bites," the first detailed epidemiological study of dog bites in the United States.

They warn parents not to give dogs to children under six, pointing out that an especially uncongenial combination is a 6-to-11-month-old dog and a 1-to-5-year-old-child.

Other findings that may help you decide which kind of dog to buy:

Dogs least likely to bite appear to be hounds (beagles, dachshunds, foxhounds, etc.).

Dogs most likely to bite seem to be in the working classification (boxers, collies, German shepherds, great Danes, etc.) and in the sporting class (pointers, setters, retrievers, spaniels).

The authors point out that 40 to 50% of the one million annual dog bites could be prevented if people would exercise caution in their behavior toward dogs.

The study, covering 947 dog bites reported during July and August, 1958, in Pittsburg, Pa., showed that only 34% of dogs traced to owners had been vaccinated against rabies and 22% of these had not received booster injections within the last three years.

Ten to 20 people die of rabies in this country every year, the authors report, and about 50,000 persons receive antirabies treatment.

The study, "Epidemiology of Dog Bites," by Henry M. Parrish, MD; Frank B. Clack, VMD; Duane Brobst, DVM, and James F. Mock, VMD, was published in Public Health Reports. This brief summary is from The AMA News.

\*\*\*\*\*

### Iberia Parish

The Iberia Parish Rabies Control Program, January through June, 1960 reports that 841 dogs were picked up by patrol; 15 animal heads were submitted to the State Laboratory for rabies analysis with none found positive; and 4172 dogs vaccinated for rabies during this period.

### Lafayette Parish

There were 5000 dogs vaccinated against rabies in Lafayette Parish during the first six months of the year. 765 dogs were picked up by patrol; 26 dogs kept under observation, and none proved to have had rabies.

### Jefferson Parish

The West Bank phase of the parishwide annual rabies vaccination program concluded with a total of 6,365 animals vaccinated at clinics on two successive Saturdays.

## Really Cold

The Navy's Antarctic exploration forces learned never to underestimate the power of the common cold to spread itself around. After catching cold upon first arriving in the polar region, the men would be cold free until — the first mail from home was delivered, with cold germs clinging to the pages of the letters.

## It Pays to be Curious

(See page 8)



1. Child Health Day will be observed on October 3 this year. What is significant about this date?
2. Why was the date changed?
3. Name at least three themes emphasized in past years on Child Health Day.
4. The 1960 theme reflects the findings of the 1960 White House Conference on Children and Youth. What are they?

# Tribute to Pierre The Pelican

Dear Sirs:

At Pierrette's request, I am writing to tell you how much my husband and I have enjoyed the messages from Pierre before our "blessed event." We have had many a smile and chuckle over the amusing and interesting manner in which the important facts concerning maternity were presented.

I think it would be very considerate of every doctor in our State to have these informal messages sent to their maternity patients - especially if it is the first child. They certainly save wear and tear on the nerves and help to create a desirable mental attitude for the expectant mother - and father-to-be.

It is still nice to hear from the Pelican Family letting us know what to expect from our little one each month.

The State Department of Health and the excellent staff that prepares these messages are to be commended upon their work! Thank you so much.

- MR. AND MRS. D. D. M.

(Ed. Note: Pierre the Pelican pamphlets referred to in the above letter were written by Dr. Loyd Rowland, director of the Louisiana Association for Mental Health. They are mailed to parents by the state board of health.)

**Luminous Dials:** Atomic Energy Commission announces it will "permit use of radioactive tritium in luminous watches and clocks." AEC says tritium is "less radioactive and hence safer than the radium in luminous watches now in use in the U.S."

- *The AMA News*

\*\*\*\*\*

In making nutrition studies, one group of investigators discovered that if personal interviews were being used, it was easier for people to remember what they had eaten at a specific meal if you first asked them what meat was served.

p. 224, March Public Health Reports

Dear Nurses:

Thanks to God and you all help an(d) encouragement I crossed over my task safe.

When you all visited me Wed. and you said it was about Labor pain I was having, it sure was, because 2:15 foreday (before day) Thursday morning I left for the hospital. My baby borned 10:29 a.m. and our wishes came true. A big Girl. I named her Margaret Elaine... Please send me an appointment for my check up and also the baby. Thanks.

Yours truly, R. —

P.S. She weighed 7 pd. 9 ozs.

(Ed. Note: The writer, 22-year-old mother of two boys, sent this letter to the St. Mary Parish Health Unit nurse who had visited her home when she did not keep a maternity clinic appointment.)

A touching tribute to the usefulness to parents of Pierre the Pelican pamphlets, is expressed in the following letter:

"This is my fourth copy we received. We had lots of sickness in our home, three little boys. They are better... My baby is in her fifth mo(n)th. I were reading your letter watching my baby. She has begun to crow. She gives me a thrill. We enjoy reading your letter so much."

\*\*\*\*\*

## The Preventive Concept

"We have to put the preventive concept in homely terms, not technical ones. We have to make our health story immediate, alive and vital. This is the kind of public health we are going to be selling from now on and the sooner we get used to it, the better off the people in our towns and cities are going to be. It is up to us, more than anyone else, to show people by personal contacts that bad health practices, skimpy public health budgets, inadequate medical rehabilitation, polluted community air and a host of other things we are putting up with all add up to an expensive and onerous burden of sick people, lost productivity and shattered personal dreams. Altogether inadequate public health service is a socially economically and spiritually wasteful business.

Herman E. Hilleboe, MD,  
Commissioner of Health,  
State of New York

\*\*\*\*\*

## Rural Health Education

Between 18 and 20 states had specific rural health education programs under U.S. Department of Agriculture Extension Service specialists in 1959. In 1946 only three states had these programs. This made the extension service think that farmers and farm families are growing more interested in good health practices. Programs were organized because farm people asked for them, wanting to know about such things as farm accidents, polio immunization, home care of the sick, and what to look for in selecting health insurance coverage. Public health workers, physicians and dentists in private practice were listed by the extension service as the key people with whom its specialists need to cooperate.

### Busy Schedule

"The busiest schedule of all" was attributed to public health nurses by the Eunice News, in an article describing the activities and problems of the Eunice branch health unit in St. Landry Parish.

Featuring the work of Mrs. Lilly Hebert and Mrs. Pat Carriere, the article also noted the shortage of personnel, lack of transportation for patients, and an upstairs office made it difficult for public health personnel to fully carry out their duties in preventing disease in the parish.

## Friends Afield



LAFAYETTE residents approach their health in the War Memorial building through a beautiful patio. Inside, they are served by trained specialists; among them, Ruby Giroir, public health nurse, and R. N. Carpenter, chief sanitarian.

## Air Pollution Sources

Many think first of industrial sources when air pollution is mentioned. Yet automobile operation, home heating, the burning of trash and similar actions of people in their private lives are a far from negligible source. One study estimated that home heating, automobile and truck use caused approximately 90 percent of an annual \$750,000,000 worth of damage from air pollution in Great Britain.

## Current Clips

Sabine Parish Health Unit has published its annual report for 1959, titled, "Protecting Your Family's Health."

\*\*\*\*\*

The 88th annual meeting of the American Public Health Association, scheduled for the Civic Auditorium in San Francisco Oct. 31-Nov. 4, will be the largest gathering of public health specialists ever held on the West Coast, according to an APHA news release.

\*\*\*\*\*

Congratulations to East Baton Rouge Parish Health Unit on its new monthly publication, "Office Tip Bits." P. Coarsey, G. Whittington, and J. Bueche are listed as editors of the mimeographed health unit news bulletin.

\*\*\*\*\*

A public address system has been installed in the large classroom (rooms 608-9-10) at Central Office. The three new microphones, together with the audio and visual aids available from the health education division, guarantee complete facilities for future large classes, and meetings and conferences of all kinds.

\*\*\*\*\*

Data from the Metropolitan Life Insurance Company show that more than 5,800,000 Americans have some degree of hearing loss, including nearly 110,000 who are totally deaf. Forty of every 1,000 males have impaired hearing, a rate one-third higher than that for females.

\*\*\*\*\*

Dr. John Porterfield, deputy surgeon general, told House Appropriations Subcommittee: "The lives of 5,500 Americans and \$150 million could be saved each year if every auto in the U.S. were equipped with seat belts... the most effective single item of equipment immediately available to reduce annual toll of five million traffic injuries and 40,000 traffic deaths."

- The AMA News

## PH Nutritionist Is House Mother

A fraternity house at the University of Alabama has a new house mother this fall. Because she is fond of entertaining, and an experienced nutritionist, the young men can look forward to a delightful, but soundly planned, social season. The new house mother is Mrs. Eola Rooks, until recently the Board of Health's beloved nutritionist in the Shreveport area.

Mrs. Rooks began her public health career as a laboratory worker, joined the Caddo parish health unit in 1934, and except for service at Camp Polk during the war has been a public health nutritionist ever since.

"She made an outstanding place for herself with the directors and nurses of her region," said Miss Margaret Moore, chief of the nutrition section. "As a former high school and Northwestern State college teacher she was able to do particularly good work in the schools."

Mrs. Rooks, to whom "nothing was ever too much trouble" if she could be of service, won the affection of people in all walks of life. On the day she was to leave for her new post her car had a flat tire. The garageman who fixed the flat threw in a free car wash - his personal going-away present to a good friend.

\*\*\*\*\*

A NEWSLETTER salute to the Cameron Parish Pilot for its recognition and handling of public health news - and our thanks to the Cameron Parish Health Unit for supplying us with clippings.

\*\*\*\*\*

Iberville Parish Health Unit has completed its 1959 annual report.

\*\*\*\*\*

At least thirty-three States (including Louisiana) and the District of Columbia have either banned the use of X-ray fluoroscopes for shoe-fitting purposes or have adopted strict regulations for such devices, the Public Health Service reported in August.

## *Teaching... Learning... Doing*

### at the Calcasieu - Lake Charles Health Unit



Top left: Assigned to the health unit from McNeese state college for public health experience were Mrs. Eldride Harper (standing left) shown with nurse supervisor Mrs. Belva Gochenour, and Mrs. Marion Carnahan (seated right), with Mrs. Lottie Marshall, PHN.

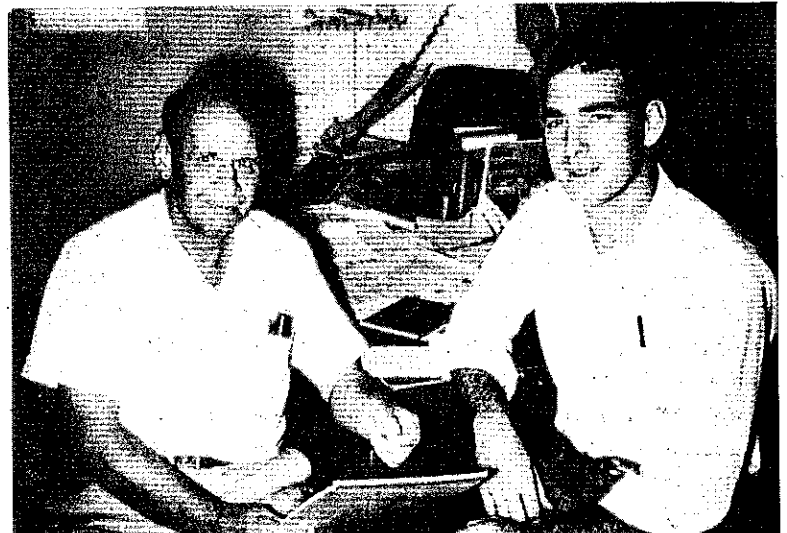


Center left: Kenneth J. Lewis (l.) a new member of the health unit's sanitarian staff, confers with Alvin Foreman during his preliminary orientation. Mr. Lewis transferred to Lake Charles from Lafourche parish.

Bottom left: A recent addition to the health unit's nursing staff is Mrs. Roberta Buck (r.), a graduate of McNeese state college. Mrs. Elizabeth Storer, staff nurse, assists her with case files and orientation.

Above: Miss Nancy Hamilton (l.) replaced Mrs. Betty Sutherland as regional TB clerk at the health unit when the Sutherlands were transferred to Bangor, Maine.

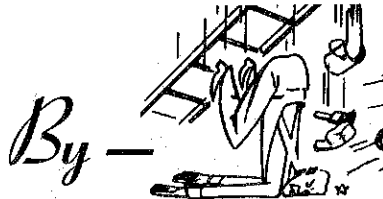
Below: Albert Riquelmy (l.), health unit sanitarian who received the Agnes Morris Memorial Award at the 1960 LPHA convention, gives pointers to a new staff member, John Sanders.



# SAFETY ZONE

You

Can Prevent Falls In  
Your Home



By —  
Repairing stair treads and  
banisters—

Keeping stairs free of all  
obstructions—

Installing handrails where  
needed—

Providing adequate light  
for stairs and halls.

## RADIATION VOCABULARY

**ALPHA PARTICLES** - Positively charged nuclei of helium atoms, emitted by radium and other heavy elements. They have great ionizing power and are dangerous to living tissue, but are easily absorbed by a few sheets of paper.

**BETA PARTICLES** - Negatively charged electrons emitted from certain radioactive nuclei. They have moderate ionizing power and are dangerous to living tissue. They can be stopped by a thin sheet of aluminum or plastic.

**GAMMA RAYS** - Electromagnetic radiation emitted from radioactive nuclei. They are very penetrating and are dangerous to living tissue. About one centimeter of lead is required to reduce these rays to one-half their incident level.

**X RAYS** - Electromagnetic radiation emitted from the electron cloud around a nucleus. Special electronic equipment is required to produce these penetrating rays. About three millimeters of lead are required to reduce these rays to one-half their incident level.

**CURIE** - A unit of radioactivity numerically equal to a decay rate of 37 billion atoms disintegrating per second. This is the amount of radioactivity associated with one gram of radium.

**MICROCURIE** - One millionth of a curie.

**MILLICURIE** - One thousandth of a curie.

**ROENTGEN** - A unit for measuring X-ray or gamma radiation. Numerically it is equal to that amount of radiation which will produce 2.083 billion ionizations in a cubic centimeter of air at 32° F. and 760 mm of mercury pressure.

**ELECTRON VOLT** - A unit commonly used to express the energy of radiations. Larger multiple units of the electron volt are frequently used: Kev for a thousand electron volts and Mev for a million electron volts.

**IONIZATION** - Process of ejecting one or more orbital electrons from an atom. The two resulting charged particles, the electron and the remaining atom, are known as an ion pair.

**CONTAMINATION** - Radioactivity in any place where it is not desired, and particularly in any place where its presence may be harmful.

**EXTERNAL RADIATION** - Exposure to ionizing radiation when the radiation source is located outside the body and the radiation must then penetrate into the deeper tissues to cause harm.

**INTERNAL RADIATION** - Exposure to ionizing radiation when the radiation source is within the body as a result of deposition of radioelements in body tissues.

## ANSWERS TO

## "CURIOUS"

1. For the first time since its initiation in 1928 Child Health Day will be observed on a new anniversary date, the first Monday in October. It has been observed on May 1 by Presidential proclamation every year since 1928.

2. The change eliminates the dual observance of May 1 as both Child Health Day and Loyalty Day. More importantly, it permits the United States to link its observance more closely to Universal Children's Day, which many nations observe on the October date.

3. Immunization against diphtheria and smallpox; birth registration; community planning; prevention of home accidents; medical and dental examinations for children entering school for the first time, are some of the past themes.

4. The 1980 Child Health Day observance focuses on adolescent health. Some specific recommendations emerging from the Conference urged voluntary community service by young people; family life courses to be instituted as part of public education from elementary school through high school; strengthening of family life education programs by religious and other community institutions. Other concerns are adolescent health needs, juvenile delinquency, early marriages.

## Health Unit Aids Local Blood Typing Program

Junior and senior students of Delhi High school had their blood typed one afternoon recently at the Del-Jaycees Bloodmobile. The town's businessmen and their employees, as well as local residents, also were given an opportunity to have their blood typed at the mobile unit.

The Richland Parish Health Unit furnished cotton balls, alcohol, glass slides, and assisted the Jaycees in rounding up other equipment. The program was endorsed by the local clinic because of the need for a new blood type list, according to public health nurse Mildred Bailey, who also helped with the actual blood typing.