

Louisiana Public Health newsletter

VOLUME XXIV, No. 7
October 1968



LOUISIANA STATE DEPARTMENT OF HEALTH

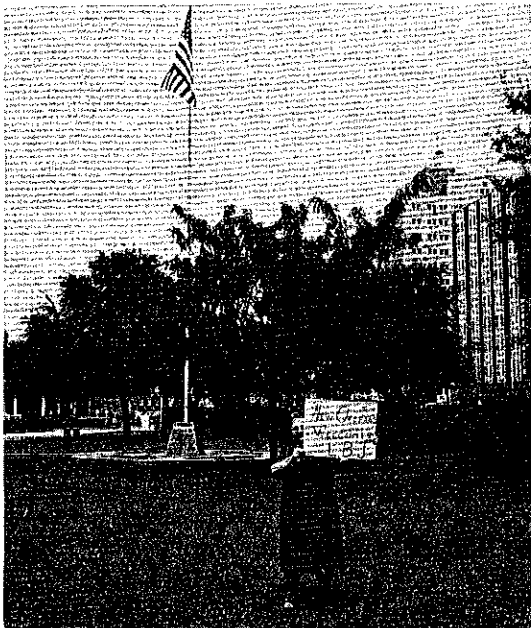
Continuing Education Project on ETV Network

Sixty 30-minute televised programs, followed by half-hour discussion periods, conducted twice monthly, will constitute the state health department's inservice training program beginning October 22 and continuing for two years.

It's all part of the Continuing Education Project of Southern Branch, of the American Public Health Association, a pilot project in which North Carolina and Alabama also are participating, and which has been operational for about one year. The three state health officers serve as a steering committee.

Through the cooperation of the Louisiana Department of Hospitals the public health program will be carried out through the facilities of the Hospital Educational Television Network. Public health workers will assemble on the second and fourth Tuesdays of each month from 3 to 4 p.m. at the nearest of eight hospitals in the ETV network.

Continued on page 4



W
E
L
C
O
M
E
S

L
B
J

WAITING for a glimpse of President Lyndon B. Johnson when he came to New Orleans to address the American Legion convention is Mrs. Cammie Brownell, cashier, Fiscal Services. The President's motorcade sped past the state office building en route to the airport.

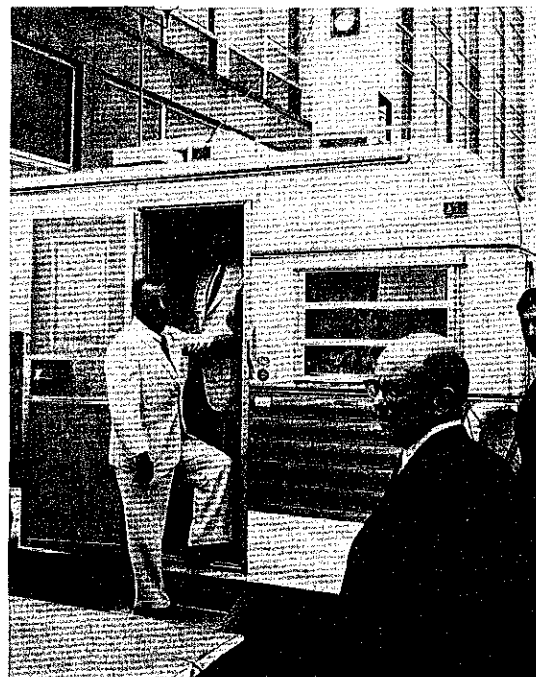
Mobile Air Control Lab Goes to State Fair For Cleaner Air Week

What is it? It doesn't look like an ordinary 19-foot, self-contained trailer — and it is not. It is the new mobile air sampling and analysis laboratory which the Air Control Section, Bureau of Environmental Health, will be using to check special air pollution problem areas in the state, and to supplement permanent checking stations set up in Baton Rouge, Lake Charles, Lafayette, Monroe, Alexandria, Shreveport, and New Orleans. The mobile unit was viewed at the State Fair in Shreveport during Cleaner Air Week.

The new mobile laboratory is equipped with two tape samplers to determine the soiling effect of pollutants and the amount of hydrogen sulfide in the air, and two gaseous samplers which can detect up to five gaseous pollutants simultaneously. Two high volume air samplers can collect suspended particulates too small to fall from the atmosphere by gravity.

A dustfall bucket collects pollutants which drop by the force of gravity.

Continued on page 4



S
E
E
S

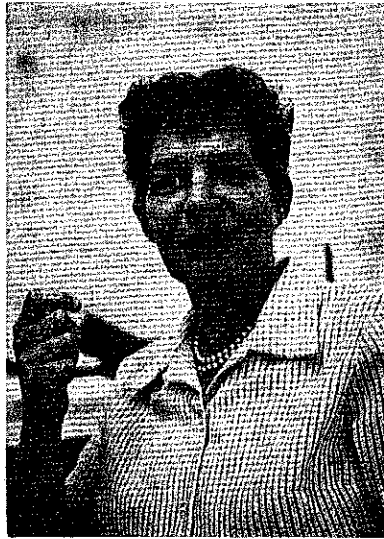
A
I
R

L
A
B

DR. ANDREW HEDMEG, state health officer, prepares to examine the interior of the mobile unit which the Air Control Section has converted into an air sampler and analysis laboratory. The unit was scheduled to be on public view at the State Fair, as a feature of National Cleaner Air Week.



Theresa Ann Yates



Clara L. Lutz, M.D.



John E. Holman

ALL ABOUT US

Miss Rose Ann Langham, chief, Nutrition, was appointed Adjunct Assistant Professor of Nutrition in the Department of Family Health and Population Dynamics of Tulane University's School of Public Health and Tropical Medicine. Miss Lillian Edwards and Mrs. Mary E. Causey, regional health educators, and Mr. Bickham C. Pardue, administrative assistant to the president, were appointed part-time Instructors in Department of Public Health Administration. Mrs. J. B. Hickey, head, Nursing Division, was re-appointed as instructor.

Mrs. Judy Lemoine, departmental informational representative, resigned to enter Tulane's School of Public Health, where Miss Anne Hansen, hospital nurse consultant, MCH, and Mr. Ronald J. Hingle, assistant head, Food and Drug Division, also are graduate students. Miss Hansen expects to complete her degree course in January.

Sheridan Sylvester has completed her dietetic internship at the University of Alabama, where she was selected Outstanding Dietetic Intern of her class, and has returned to the Nutrition Section.

Dr. Robert L. Owen, EIS surveillance and information officer, PHS, was assigned by NCDC to the state health department in September. Dr. Owen received his M.D. degree from Harvard in 1966. He served an internship and one year of residency in medicine at Beth Israel Hospital. He will be active in the Division of Communicable and Preventable Diseases.

Dr. Clara Louise Lutz was appointed obstetrical consultant in the MCH program to provide professional guidance for the development and improvement of maternity care for mothers with low income, including better coordination of services between state charity hospitals and public health units. Formerly in the private practice of obstetrics and gynecology, she is a member of the American College of Obstetricians-Gynecologists (J.F.), American Fertility Society (J.F.), American Medical Women's Association, and Louisiana state and parish medical societies.

Miss Theresa Ann Yates is a new consultant in the Eye Anomalies Detection program. An honor graduate of Northeast Louisiana State College, she has done graduate work in psychology at the University of Southern Mississippi. She is a member of the Mississippi Psychological

Association, LPHA, and the American Association of University Women.

Jerry O. Walker, speech and hearing consultant, replaces Mr. Jim Guillory in the Northeast region. Mr. Guillory transferred to the Southwest. Mr. Walker received his B.A. degree from Northwestern State College, and his M.A. from La. Tech. He comes to us from the Carolyn Rose Strauss Rehabilitation Center at Monroe. Formerly he was employed by the Jeff Davis Parish School Board and McNeese College, and the Kentucky State Department of Mental Health.

John E. Holman joined the health department in July as assistant health mobilization representative. A native of Youngstown, Ohio, and graduate of Youngstown University, he has served as VD Control Public Health Advisor, USPHS, in Tampa and Sarasota, Fla., and Chicago, since 1966. He will work throughout the state with the Bureau of Community Health Services health mobilization program which includes medical self-help training and emergency health and medical planning and stockpiling.

Mr. Harry Thompson joined the Health Education Division as motion picture projector operator, in September. "Now maybe I can get a vacation," says Mr. Clarence Colbert who has been doing the work of two men most of the summer.

Handicapped Children Section, Central Office, calls their steno-clerk, Mrs. Florence Favaron, their "super woman." She had major surgery on a Monday, returned to work on Wednesday, and has labored "like a Trojan" ever since.

Services of the Louisiana State Department of Health are rendered on a non-discriminatory basis in accordance with the provisions of Title VI of the Civil Rights Act of 1964.

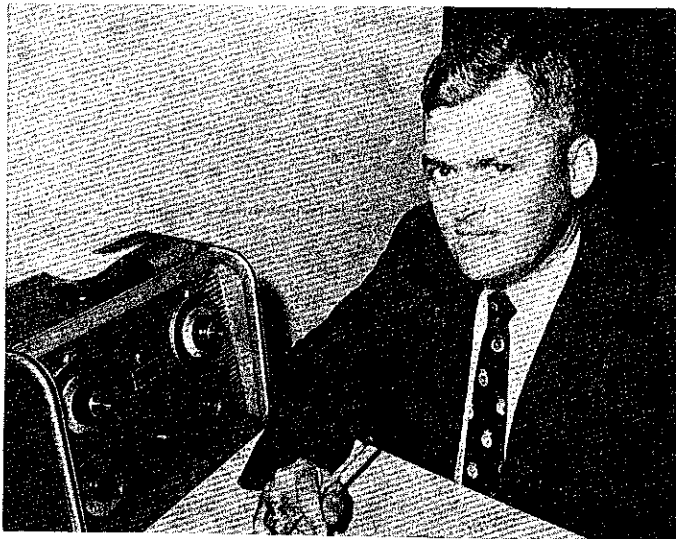
The Louisiana Public Health Newsletter is published by the Division of Public Health Education of the Louisiana State Board of Health at 325 Loyola Ave., New Orleans. Mailing address: P.O. Box 60630, New Orleans, La., 70160.

JOHN J. McKEITHEN
Governor

ANDREW HEDMEG, M.D., M.P.H.
State Health Officer

M. E. KOSSACK, M.S.P.H.
Head, Division of Public Health Education

IRIS M. DAY
Editor



Jerry O. Walker

ALL ABOUT US

Continued from page 2

Marcia L. Willis, daughter of Mr. Osborn Willis, head, Sanitarian Services, was elected to the student council at the University of North Carolina where she is working toward her M.P.H. degree in public health administration.

Miss Paula A. Trentacoste, secretary, Home Health Services, is engaged to Warren J. Elmer of Metairie, La. From Terrebonne Parish comes the news that **Miss Gloria A. Nettleton**, typist-clerk II, was married Aug. 31 to David F. Boudreaux.

Mr. Harold Ramos, chief sanitarian, Iberia, and chairman of the Iberia TB Association's air conservation program, attended the Southern TB Conference in Jacksonville, Fla., where he served as reactor to a panel discussion.

Dr. Ben Freedman, director, Bureau of Health Conservation, was invited to participate in a Sanitarian's Training Conference at Montana State University.

Rev. Burnell J. Robertson, former motion picture projector operator, was seriously injured in a car accident Aug. 11. After several weeks in hospital he is recuperating at his New Iberia home. We send best wishes for his complete recovery.

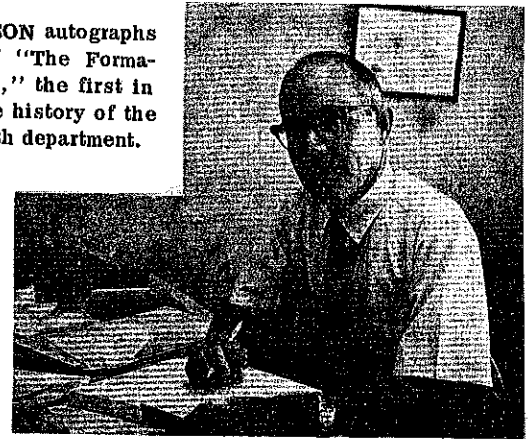
Miss Virginia Hines, former medical social worker now residing in Atlanta, was a welcome visitor to Central Office late this summer.



Public health workers lost another good friend in August with the death of **Dr. John M. Whitney**, from 1941-1949 director of the New Orleans City Health Department. At the time of his death he was the 7-state regional director for PHS in Kansas City, Mo. Friends across the country are endeavoring to set up a Memorial Fund in his honor. Tax-exempt contributions may be sent to M. E. Kosack, M.S.P.H., head, Division of Health Education, Louisiana State Department of Health, P.O. Box 60630, New Orleans, La. 70160.

Dr. Gillson Begins 2nd Volume Of Public Health History

DR. GILLSON autographs a copy of "The Formative Years," the first in a 2-volume history of the state health department.



The health department is honored to have its "biographer" in residence this academic year. He is Gordon E. Gillson, Ph. D., Professor of History at Adams State College, Colorado, and author of "The Formative Years," history of the Louisiana State Board of Health.

Dr. Gillson is on sabbatical leave for nine months to work on the second volume of his public health history. He has received a research grant from the American Philosophical Society and a grant from the National Library of Medicine for the purpose of continuing his study.

"I am pleased to be able to resume research on the history of the Louisiana State Board of Health," Dr. Gillson told a Newsletter reporter. "Your institution certainly has played a significant role in the public health movement in America," he said.

Assisting him with research and secretarial duties is his wife, Phyllis. The Gillsons' daughters, Deborah, 15, and Shelly, 9, are attending schools in New Orleans.

Office space has been made available to Dr. Gillson at Central Office. In addition to researching public health records, Dr. Gillson will be using the library and university facilities in New Orleans and Baton Rouge, and he expects to travel throughout the state in search of historical data.

Because of its historical period, ending with the year 1884, research for "The Formative Years," was restricted necessarily largely to primary sources. For his second book, which will bring the state health department to more recent times, Dr. Gillson will be able to interview people who have been actively involved in developing public health programs in Louisiana.

One thousand copies of "The Formative Years" were published in 1967 by the Louisiana State Board of Health, with financial assistance from the Louisiana Public Health Association.

"We are happy that Dr. Gillson is able to continue his important work, and to cooperate with him," said Dr. Andrew Hedmeg. "Because the Louisiana State Board of Health was the first to be established in the United States, Dr. Gillson's study is a valuable contribution to the whole field of public health history, as well as to that of our own state."

A Policy Statement On Courteous Treatment

Dr. Philip R. Lee, Assistant Secretary for Health and Scientific Affairs, Department of Health, Education, and Welfare, has issued the following policy statement on courteous treatment of all those receiving medical care.

Individual health care is, by its very nature, the most personal of services. Those who seek it often do so in fear, anxiety, and confusion. They are usually as sensitive to the fashion in which service is given as to the service itself.

We are deeply concerned, for these reasons, that the highest level of consideration for human dignity be reflected in the manner in which health services are delivered to any individual. . . .

It is in this connection that we want to convey to every State, local, or other agency which administers personal health care programs our own strong feelings about this.

In order to emphasize the need for courteous treatment of all those receiving medical care and how we can best assure this treatment, I am requesting that this memorandum be sent to every health care institution or agency participating in health care programs supported by the Public Health Service to require that patients receive only the utmost courtesy in getting health care, including the appropriate use of courtesy titles (Mr., Mrs., and Miss) in both written and oral communications with adult patients.

Agencies are asked to evaluate the fashion in which care is rendered.

Finally, in every administrative procedure, research investigation, public health clinic, or any other setting in which there is personal contact, this Department, conducting or supporting such activities, will continue to expect that each contact shall be undertaken and conducted with full consideration for all courtesies and civilities essential to the dignity and self-esteem of every individual.

Credit Union Removes Limit

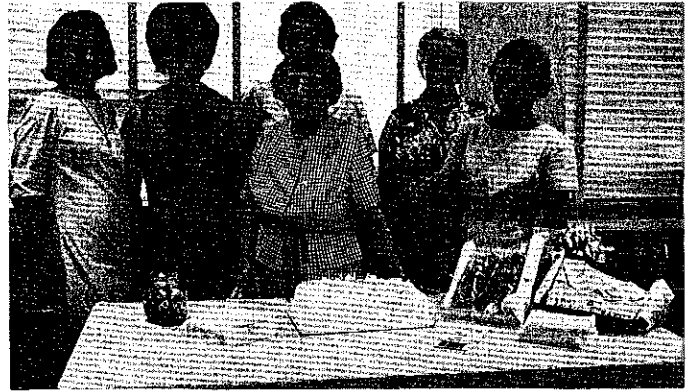
The Louisiana Public Health Workers Federal Credit Union has lifted its restriction of \$2,500 on savings accounts. According to L. P. Ganucheau, president, the Credit Union has had dramatic growth since its 1967 annual report, and all of its money is at work. Future growth is limited to the increase in savings by members.

Credit Union deposits are insured. Members also receive a free life insurance policy on deposits; maximum insurance is \$2,000. Deposits may be made in any amount.

Letter To The Editor:

Perhaps the information was not available to you but in 1956 we found a pre-school child in Beauregard with Kwashiorkor. We followed this child and were assisted by (the late) Mrs. Marion Wolfe, nutritionist. The child is a young lady now and demonstrates no evidence of having kwashiorkor.

Elizabeth C. Hartt, R.N.
Public Health Nurse
Beauregard Parish Health Unit



SAYING "HAPPY BIRTHDAY" to Miss Edna Ruth Howard, clerk II, Division of Tab & Analysis, (front) are some of her co-workers (l-r): Miss Mary Tragelis, Miss Barbara A. Cudd, Miss Elfrieda D. Felkner, Mrs. Dorothy Engelbracht, and Mrs. Beatrice R. Bonin. Miss Howard retires Oct. 28 with 20 years of continuous service in the Division.

CONTINUING EDUCATION from page 1

More than 150 public health workers, selected for their leadership qualities, will have attended discussion leader workshops in preparation for the course. They will be responsible for leading group discussions pertinent to the content of each film and its application to local public health problems. Discussion leader guides and study manuals will be provided.

The Continuing Education Project is funded by a Federal grant to Southern Branch. Project director is Dr. Albert V. Hardy. The Louisiana program coordinator is Mrs. Mary E. Causey. Members of the Steering Committee are Mrs. J. B. Hickey, and Mrs. Rosemary Coerver, head and assistant head of the Division of Nursing; Miss Pearl Anding, regional records consultant; Mr. Osborn Willis, head, Division of Sanitarian Services; Dr. Ben Freedman, director, Bureau of Health Conservation; Mr. Vernon Parker, president of Louisiana Public Health Association, Inc.

Broad subject areas to be covered in the course include interpersonal relations, communicable disease control, environmental health, maternal and child health, adult health, special health services, mental health, program planning, management and evaluation. From six to eight sessions will be devoted to each of these major subjects.

MOBILE AIR CONTROL from page 1

The station also contains a lead peroxide candle to check the amount of sulfur dioxide in the air, wind direction and speed indicators to pinpoint the pollution source and chemical analysis equipment.

There is also sleeping space for the chemist and technician who will staff the mobile laboratory.

Although the laboratory will be used most often to check air pollution problems, it has the added feature that the air samplers can be removed and the station converted to a health team's mobile headquarters in case of a natural disaster.

The Health Department's Engineering Division acts as the working arm of the Louisiana Air Control Commission. The mobile laboratory is part of the air sampling equipment now in use throughout the state in a joint air control program.