

West Nile Virus Report - 2003

Age Group	Cases			Population	Cases /100K	Death /100K	Clinical Classification			ME /100K
	M	F	Total				ME	Fever	Unk	
0-14	2	3	5	1,003,533	0.5	0	0	3	2	0.3
15-29	4	5	9	1,011,128	0.9	0	0	7	2	0.7
30-44	19	10	29	999,958	2.9	0	0	23	6	2.3
45-59	19	15	34	756,000	4.5	1	0.1	29	5	3.8
60-75	13	11	24	513,383	4.7	2	0.4	19	5	3.7
75+	12	9	21	184,085	11.4	4	2.2	20	1	10.9
Undetermined	0	0	0			0				
Total	69	53	122	4,468,088	2.7	7	0.2	101	21	0

ME = Meningo-encephalitis

Parish	Cases		Population	Cases /100K	Death /100K	ME	Fever	Unk	
	Last	Now							
1 Jefferson	3	3	455,500	0.7	0.0		3		
1 Orleans	4	4	485,000	0.8	0.0		2	2	
1 St Bernard	1	1	67,000	1.5	0.0			1	
1 Plaquemines	0	0	26,800	0.0	0.0				
2 Ascension	2	2	76,500	2.6	0.0		2		
2 East Baton Rouge	3	3	413,000	0.7	0.0		1	2	
2 East Feliciana	1	1	21,500	4.7	0.0		1		
2 Iberville	0	0	33,000	0.0	0.0				
2 Pointe Coupee	0	0	22,800	0.0	0.0				
2 West Baton Rouge	0	0	22,000	0.0	0.0				
2 West Feliciana	0	0	15,100	0.0	0.0				
3 Assumption	1	1	23,400	4.3	0.0		1		
3 Lafourche	4	4	90,000	4.4	0.0		2	2	
3 St. Charles	1	1	48,100	2.1	0.0			1	
3 St James	0	0	21,200	0.0	0.0				
3 St John	0	0	43,000	0.0	0.0				
3 St Mary	1	1	53,500	1.9	0.0		1		
3 Terrebonne	3	3	104,500	2.9	0.0		3		
4 Acadia	0	0	58,900	0.0	0.0				
4 Evangeline	0	0	35,500	0.0	0.0				
4 Iberia	1	1	73,300	1.4	0.0		1		
4 Lafayette	0	0	190,500	0.0	0.0				
4 St Landry	0	0	87,500	0.0	0.0				
4 St Martin	0	0	45,600	0.0	0.0				
4 Vermillion	0	0	53,800	0.0	0.0				
5 Allen	0	0	25,500	0.0	0.0				
5 Beauregard	0	0	33,000	0.0	0.0				
5 Calcasieu	1	1	183,500	0.5	0.0		1		
5 Cameron	0	0	10,000	0.0	0.0				
5 Jefferson Davis	1	1	31,400	3.2	1	3.2	1		
6 Avoyelles	0	0	41,500	0.0	0.0				
6 Catahoula	1	1	11,000	9.1	0.0		1		
6 Concordia	0	0	20,300	0.0	0.0				
6 Grant	0	0	18,700	0.0	0.0				
6 Rapides	2	3	126,500	2.4	0.0		2	1	
6 Lasalle	0	0	14,300	0.0	0.0				
6 Vernon	0	0	52,500	0.0	0.0				
6 Winn	0	0	16,900	0.0	0.0				
7 Bienville	0	0	15,800	0.0	0.0				
7 Bossier	11	11	98,500	11.2	2	2.0	8	3	
7 Caddo	40	40	252,200	15.9	2	0.8	38	2	
7 Claiborne	1	1	16,900	5.9	1	5.9	1		
7 Natchitoches	3	3	39,100	7.7	0.0		1	2	
7 DeSoto	1	1	25,500	3.9	0.0		1		
7 Sabine	0	0	23,500	0.0	0.0				
7 Red River	0	0	9,600	0.0	0.0				
7 Webster	0	0	41,800	0.0	0.0				
8 Caldwell	0	0	10,600	0.0	0.0				
8 East Carroll	0	0	9,400	0.0	0.0				
8 Franklin	0	0	21,300	0.0	0.0				
8 Jackson	1	1	15,400	6.5	0.0		1		
8 Lincoln	2	2	42,500	4.7	0.0		2		
8 Madison	0	0	13,700	0.0	0.0				
8 Morehouse	2	2	31,000	6.5	0.0		2		
8 Ouachita	2	2	147,500	1.4	0.0		2		
8 Richland	1	1	21,000	4.8	0.0		1		
8 Tensas	0	0	6,500	0.0	0.0				
8 Union	1	1	22,800	4.4	0.0		1		
8 West Carroll	3	3	12,300	24.4	0.0		2	1	
9 Livingston	6	7	92,000	7.6	1	1.1	5	2	
9 St Helena	2	2	10,500	19.0	0.0		2		
9 St Tammany	6	6	192,000	3.1	0.0		4	2	
9 Tangipahoa	5	6	100,588	6.0	0.0		6		
9 Washington	2	2	44,000	4.5	0.0		2		
Undetermined	0	0							
Total	119	122	4,468,088	2.7	7	0.2	101	21	0

Clinical	Outcome
WNFever	21 Home
WN Meningoencephali	101 Hospitalized
Undetermined	0 ICU
Total	122 Ward

WNV Deaths		
73	M	Caddo 9/1/2003
82	M	Bossier 9/3/2003
78	M	Jefferson Davis 9/10/2003
87	F	Bossier 9/25/2003
51	F	Claiborne 10/20/2003
73	M	Livingston 11/7/2003
77	M	Caddo 11/21/2003

WNV Infections Aquired Out of State		

EEE Case		
Onset		
59	M	Tangipahoa 7/16/2003

SLE Cases		
Onset		
45	F	Livingston 7/23/2003
40	F	Livingston 8/11/2003
64	M	Livingston 8/21/2003
73	M	Livingston 8/23/2003
43	M	East Baton Rouge 9/3/2003
37	F	East Baton Rouge 9/26/2003
38	F	East Baton Rouge 9/27/2003
49	M	Livingston 10/23/2003
33	M	Livingston 11/12/2003

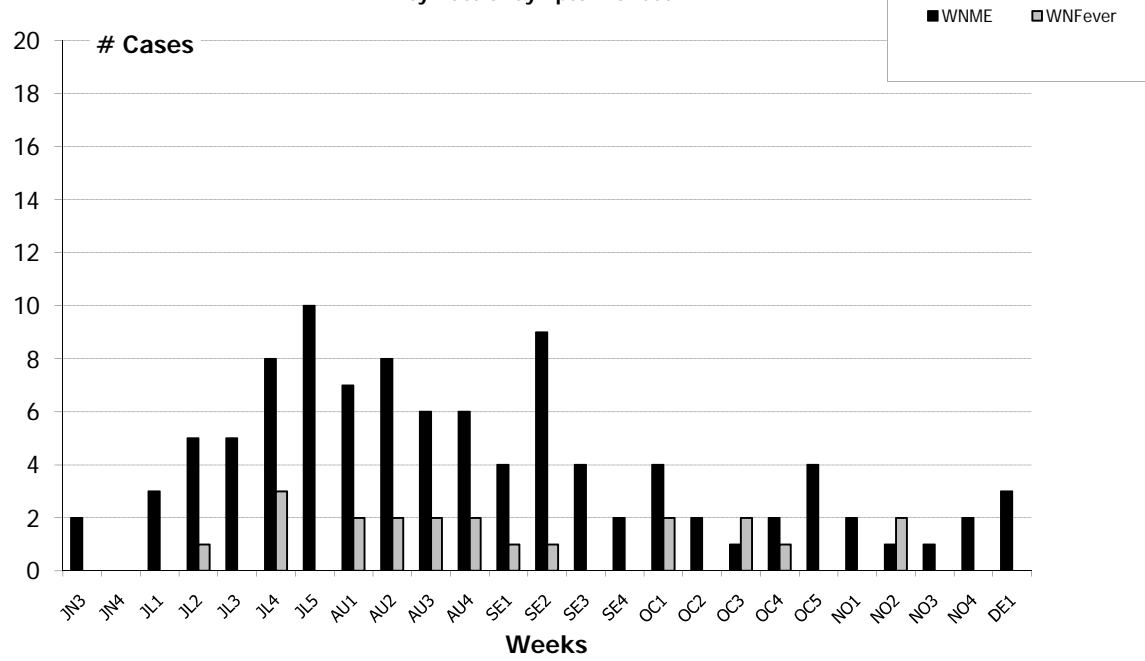
SLE Death		
64	M	Livingston 08/28/03

LaCrosse Cases		
Onset		
49	M	St. Mary 10/8/2003
45	M	Calcasieu 10/20/2003
67	F	Tangipahoa 10/30/2000

LaCrosse Death		
67	F	Tangipahoa 11/10/2003

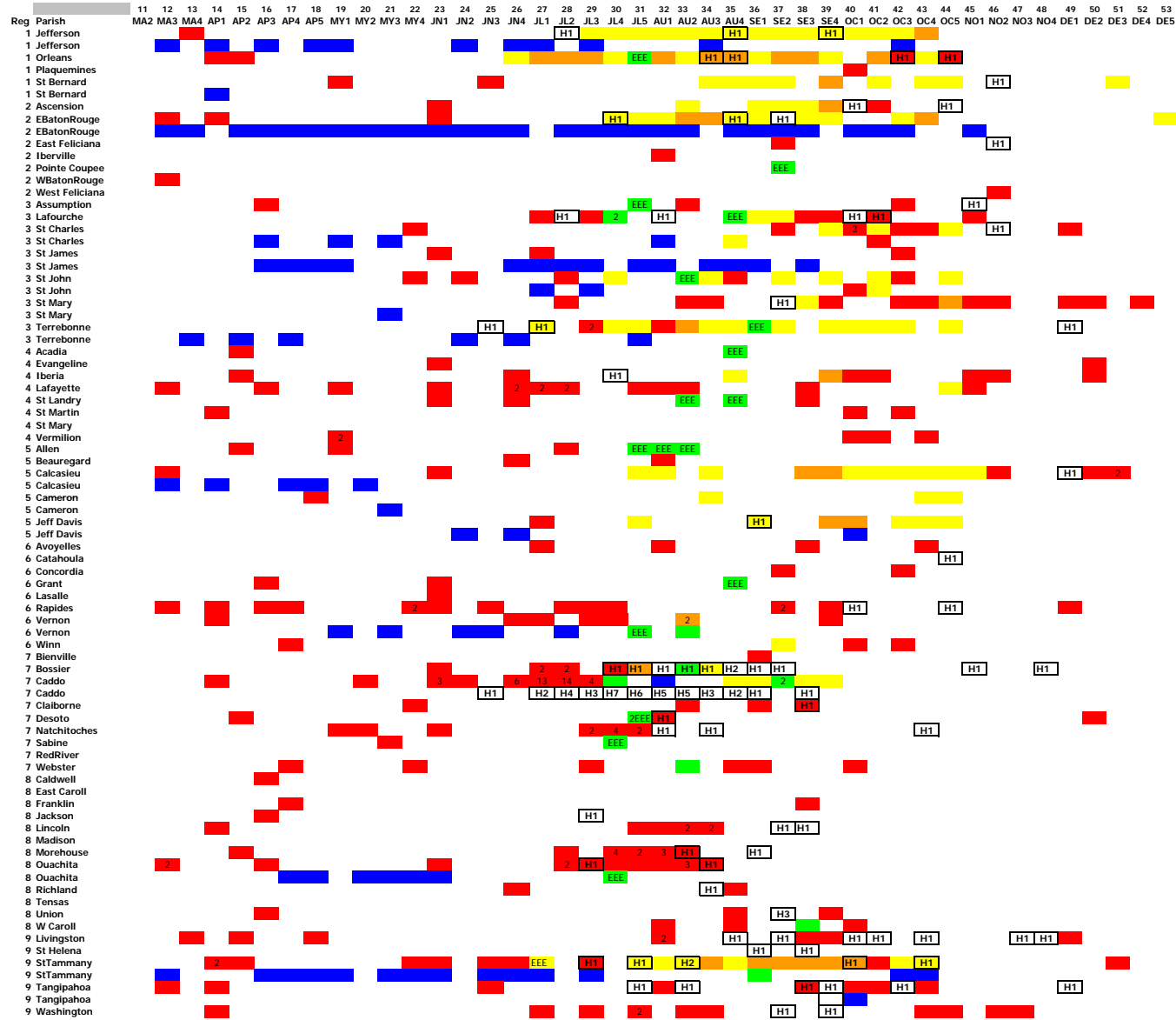
Rg Parish	Total	1-5	6-9	7-13	14-17	18-22	23	24	25	26	27	28	29	30	31	32	33	34	35	36	37	38	39	40	41	42	43	44	45	46	47	48	49	50	51	52			
		JA	FE	MA	AP	MY	JN1	JN2	JN3	JN4	JL1	JL2	JL3	JL4	JL5	AU1	AU2	AU3	AU4	SE1	SE2	SE3	SE4	OC1	OC2	OC3	OC4	OC5	NO1	NO2	NO3	NO4	DE1	DE2	DE3	DE4			
1 Jefferson	4											1							1				1					1											
1 Orleans	4																	1	1							1		1											
1 St Bernard	1																																						
2 Ascension	1																								1														
2 EBatonRouge	3													1					1		1																		
2 EFeliciana	1																																						
2 WBatonRouge	0																																						
2 Iberville	0																																						
2 Pointe Coupee	0																																						
3 Assumption	1																																						
3 Lafourche	4											1				1									1	1													
3 St. Charles	1																																						
3 St James	0																																						
3 St John	0																																						
3 Terrebonne	3								1			1																											
3 St Mary	1																																						
4 Catahoula	1																																						
4 Evangeline	0																																						
4 Iberia	1														1																								
4 Lafayette	0																																						
4 St Landry	0																																						
4 St Martin	0																																						
4 Vermillion	0																																						
5 Allen	0																																						
5 Calcasieu	1																																						
5 Jeff Davis	1																																						
6 Avoyelles	0																																						
6 Concordia	0																																						
6 Grant	0																																						
6 Rapides	3																																						
6 Winn	0																																						
7 Bossier	11																																						
7 Caddo	40																																						
7 Claiborne	1																																						
7 DeSoto	2																																						
7 Lincoln	2																																						
7 Natchitoches	1																																						
7 Red River	1																																						
7 Jackson	1																																						
7 Webster	0																																						
7 West Carroll	3																																						
8 Morehouse	2																																						
8 Ouachita	2																																						
8 Richland	1																																						
8 Tensas	0																																						
8 Union	1																																						
9 Livingston	7																																						
9 St Helena	2																																						
9 StTammany	6																																						
9 Tangipahoa	6																																						
9 Washington	2																																						
Undetermined	0																																						
Total	122	0	0	0	0	0	0	0	0	2	0	3	6	5	11	10	9	10	8	8	5	10	4	2	6	2	3	3	4	2	3	1	2	3	0	0	0		
WNME	101	0	0	0	0	0	0	0	2	0	3	5	5	8	10	7	8	6	6	4	9	4	2	4	2	1	2	4	2	1	1	2	3	0	0	0			
WNFever&Unk	21	0	0	0	0	0	0	0	0	0	0	1	0	3	0	2	2	2	2	1	1	0	0	2	0	2	1	0	0	2	0	0	0	0	0	0	0		

West Nile Cases Louisiana 2003 by Date of Symptom Onset



JA=January, FE=February, MA=March, AP=April, MY=May, JN=June, JL=July, AU=August, SE=September, OC=October, NO=November, DE=December
Starting in May, the number following the month is the week: example MY1 is the first week in May

—
—
—



Call (800)256-2748 for information
 XXX Bird testing temporarily suspended since presence of WNV in the parish is well established. Early warning led to issuing alert to population and mosquito control. Continued testing would not provide any more useful information
 JA=January, FE=February, MA=March, AP=April, MY=May, JN=June, JL=July, AU=August, SE=September, OC=October, NO=November, DE=December

Reg Parish 11 12 13 14 15 16 17 18 19 20 21 22 23 24 25 26 27 28 29 30 31 32 33 34 35 36 37 38 39 40 41 42 43 44 45 46 47 48 49 50 51 52 53
MA2 MA3 MA4 AP1 AP2 AP3 AP4 AP5 MY1 MY2 MY3 MY4 JN1 JN2 JN3 JN4 JL1 JL2 JL3 JL4 JL5 AU1 AU2 AU3 AU4 SE1 SE2 SE3 SE4 OC1 OC2 OC3 OC4 OC5 NO1 NO2 NO3 NO4 DE1 DE2 DE3 DE4 DE5
Starting in March, the number following the month is the week: example MA2 is the second week in March

12/31/2003

390 total positive birds

2,059 tested

15,883 reported

Parish	Bird Species							Total
	Cardinal	Blue Jay	Sparrow	Grackle	Crow	Raptor	Other	
Acadia	1							1
Allen	2	1						3
Ascension		1	1					2
Assumption	2	1						3
Avoyelles	1	4						5
Beauregard	1	1						2
Bienville		2						2
Bossier	2	11	3					16
Caddo	2	31	8		3			44
Calcasieu	3	5	1					9
Caldwell			1					1
Cameron		1						1
Claiborne		3	2					5
Concordia		1	1					2
De Soto	1	1			1			3
EBR	2	2	2		1			7
East Feliciana	1							1
Evangeline	1		1					2
Franklin		1	2					3
Grant	1	1						2
Iberia	2	3	3					8
Iberville			1					1
Jackson		1						1
Jefferson		1	1		1			3
Jefferson Davis		2		2				4
Lafayette	4	4	7	2				17
Lafourche		5	1					6
LaSalle		1						1
Lincoln	1	7			1			9
Livingston	1	3	5		1			10
Morehouse		13	2		1			16
Natchitoches	2	6	3		1			12
Orleans		8	2	1	9	1-Hawk		21
Ouachita	3	10	8	2				23
Plaquemines					1			1
Rapides	3	7	5	1				16
Richland	1	1	1					3
Sabine		1						1
St. Bernard					1		Starling(1), Mockingbird(1)	3
St. Charles		4	1		3	1-Hawk		8
St. James		2	1		1			4
St. John		2	3		1			6
St. Landry		2	1	1	1			5
St. Martin		2	1					3
St. Mary	2	3	6	2		2-Owl		15
St. Tammany	6	10	1		5			22
Tangipahoa	2	7						9
Terrebonne		2	1				Parrot (1)	4
Union	2	1			1			4
Vermilion	1	1	1		1			5
Vernon	4	3			1			8
Washington	4	6			2			12
WBR						1-Owl		1
Webster	3	2	1					6
West Carroll		1	2					3
West Feliciana		1						1
Winn	1		1		1			3
Total	62	189	81	13	36	5		4 390

WNV Positive Mosquito Species

Parish	Cx. quinquefasciatus	Cx. salinarius	Ae. vexans	An. crucians	Other
Cameron					mixed Cx
Calcasieu		11		5	Cq. perturbans
EBR	65	1	3	1	Cx. restuans, Oc. infirmatus, Ps. ferox(2), Ps. howardii, Cx. nigripalpus(2)
Jefferson	12				
Jefferson Davis			2	2	An. quadrimaculatus(2)
Ouachita	12		3		Ae. albopictus, Ps. columbiae
St. Bernard	1				
St. Charles	5				
St. Mary	1				
St. James	23				
St. John	2				
St. Tammany	13	11	3		Ae. albopictus, Cx. erraticus
Tangipahoa				2	
Terrebonne	3	3			Cx. restuans,
Vernon					An. quadrimaculatus(3), mixed An, unknown
Total	137	26	11	10	

Total pools = 201

SLE Positive Mosquito Species

Parish	Cx. quinquefasciatus	Ps. ciliata	Cx. nigripalpus
EBR	2	1	1

Total pools = 4

- Cx = Culex
- An = Anopheles
- Ae = Aedes
- Oc = Ochlerotatus
- Ps = Psorophora
- Cq = Coquillettidia

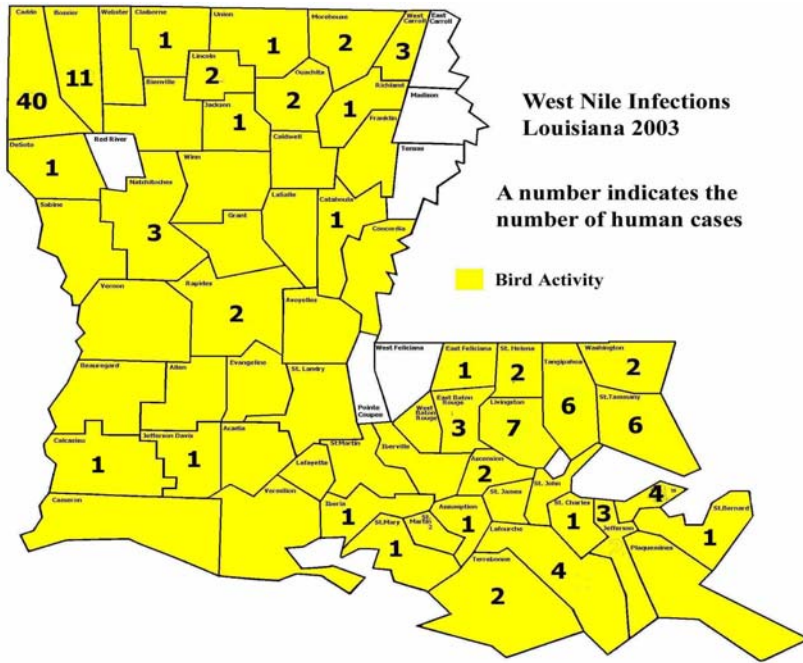
Chicken Sentinels

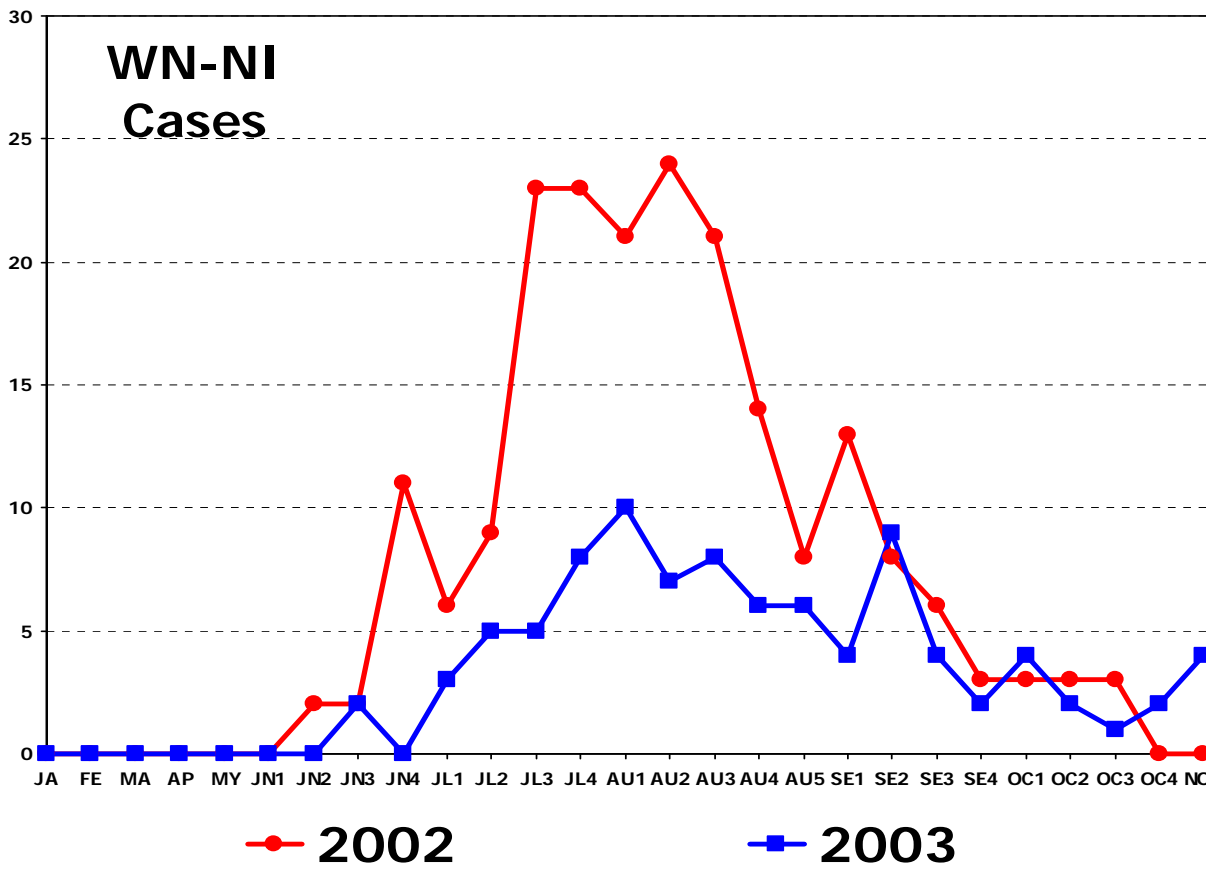
Parish	WNV+	EEE+	SLE+
Ascension	4	0	0
Bossier	22	0	0
Caddo	12	0	0
Calcasieu	48	0	0
Cameron	8	0	0
East Baton Rouge	38	0	0
Iberia	2	0	0
Jefferson	50	0	0
Jefferson Davis	9	0	0
Lafayette	2	0	0
Orleans	29	0	0
St. Bernard	16	0	0
St. Charles	27	0	0
St. John	26	0	0
St. Mary	2	0	0
St. Tammany	43	1	1
Terrebonne	46	0	0
Vernon (Ft. Polk)	2	0	0
Winn	1	0	0
	387	1	1

Horses 64 total
 Reported by State Veterinarian's Office

Parish	WNV+	EEE+	Other WNV+ Animals
Acadia	1	1	Alligator 7
Allen	0	3	Bald Eagle 1
Ascension	1	0	Cat 1
Assumption	0	1	Conure 1
Avoyelles	1	1	Crane 1
Bienville	0	1	Hawk 1
Bossier	5	0	Macaw 1
Caddo	4	0	
Catahoula	1	0	
DeSoto	0	2	
East Baton Rouge	1	0	
Franklin	1	0	
Grant	0	1	
Jefferson	0	1	
Jeff Davis	1	0	
Lafourche	3	2	
Lincoln	1	0	
Livingston	1	2	
Orleans	0	1	
Ouachita	0	1	
Pointe Coupee	0	1	
Rapides	1	0	
Red River	1	0	
Richland	1	0	
Sabine	1	1	
St. John	0	1	
St. Landry	0	2	
St. Tammany	6	0	
Terrebonne	0	3	
Vernon	1	0	
Webster	1	2	
West Baton Rouge	0	1	
West Carroll	1	0	
West Feliciana	1	0	
Winn	1	0	
Unknown	0	0	
Total	36	28	

12/31/2003

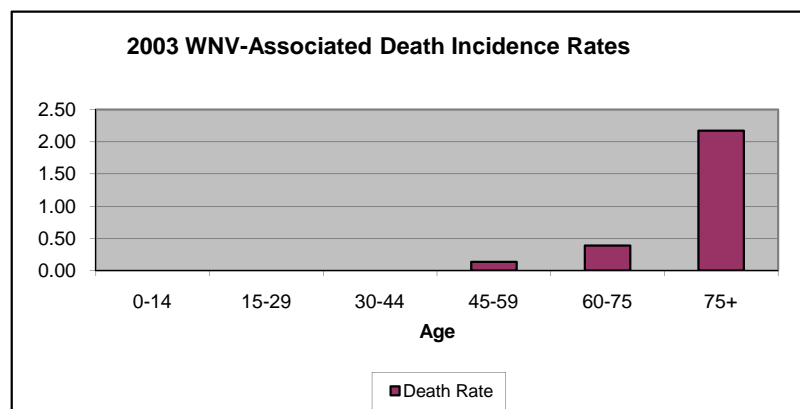
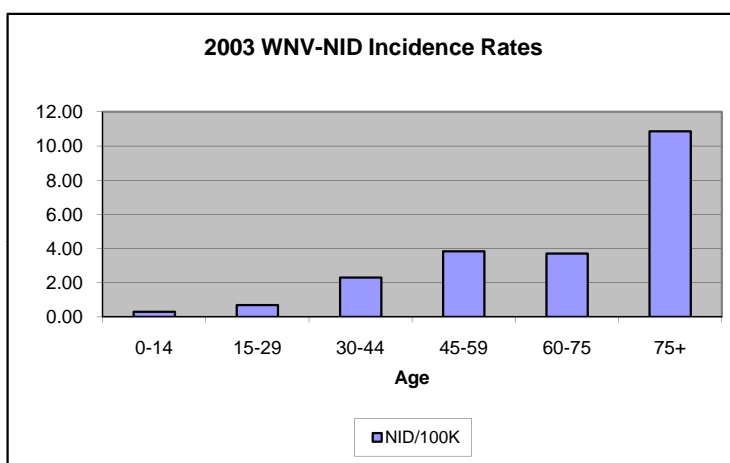
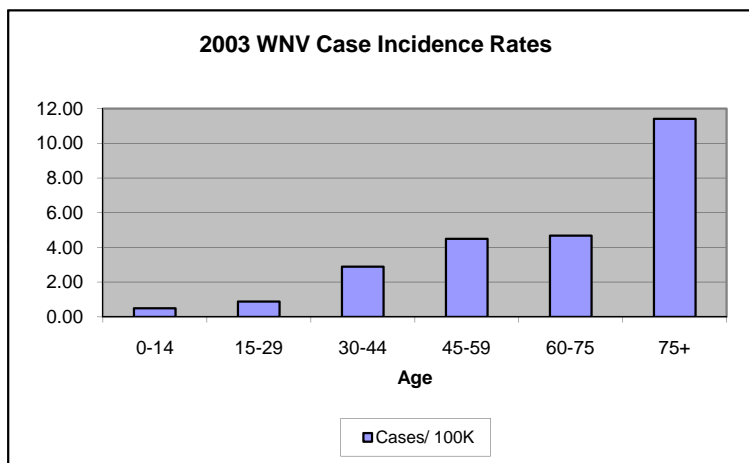






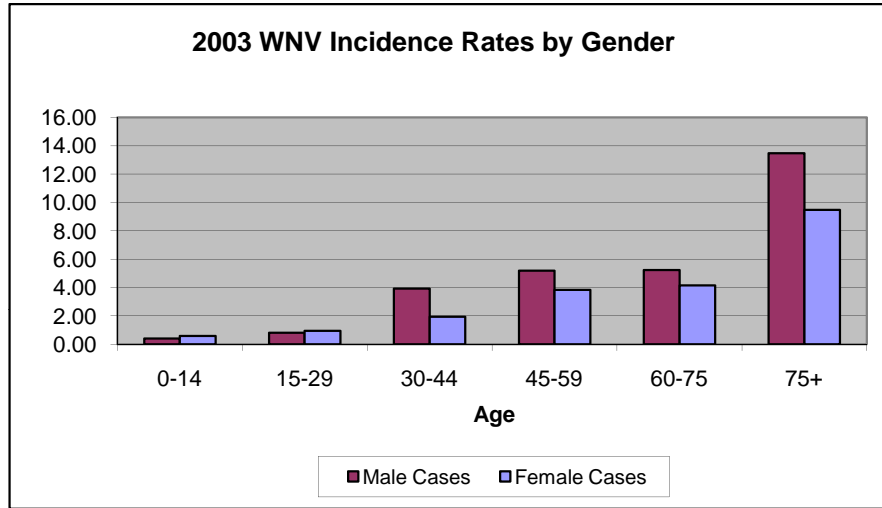
All 2003 Cases

Age Group	Sex		Total	Population	Cases /100K	Death /100K	Clinical Classification		ME /100K		
	M	F					ME	Fever			
0-14		2	3	5	1003532.56	0.50	0	0.00	3	2	0.30
15-29		4	5	9	1011128.31	0.89	0	0.00	7	2	0.69
30-44	19		10	29	999958.09	2.90	0	0.00	23	6	2.30
45-59	19		15	34	756000.49	4.50	1	0.13	29	5	3.84
60-75	13		11	24	513383.31	4.67	2	0.39	19	5	3.70
75+	12		9	21	184085.23	11.41	4	2.17	20	1	10.86
Undetermined	0		0	0			0				
Total	69		53	122	4468088.00	2.73	7	0.16	101	21	2.26



based on 48.4% male, 51.6% female as calculated by 2000 Census

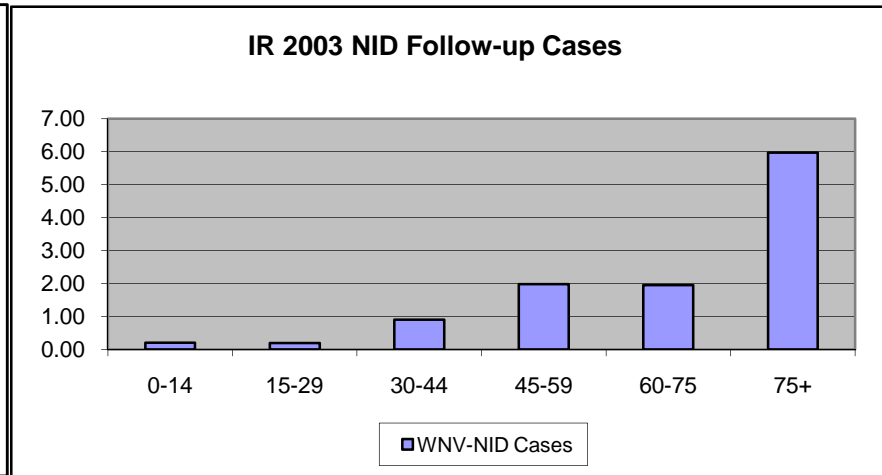
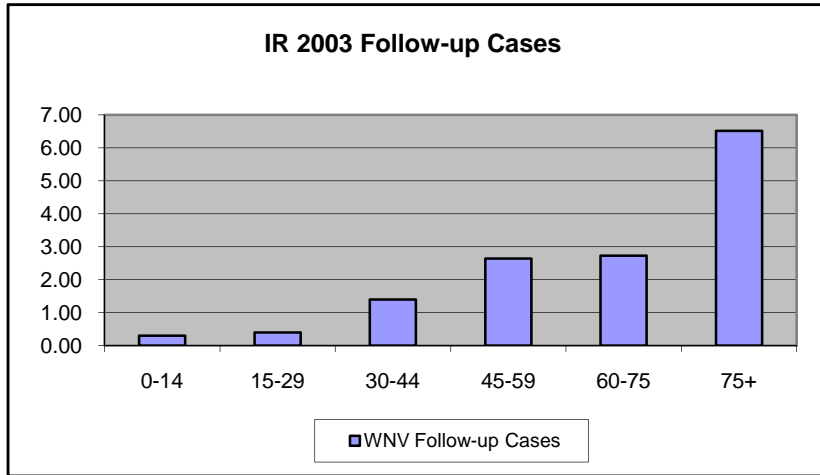
	M	LA Pop	LA Pop Male	% Male	F	LA Pop	LA Pop Female	% Female
0-14	2	1003532.56	485709.76	0.41	3	1003532.56	517822.8	0.58
15-29	4	1011128.31	489386.1	0.82	5	1011128.31	521742.2	0.96
30-44	19	999958.09	483979.72	3.93	10	999958.09	515978.4	1.94
45-59	19	756000.49	365904.24	5.19	15	756000.49	390096.3	3.85
60-75	13	513383.31	248477.52	5.23	11	513383.31	264905.8	4.15
75+	12	184085.23	89097.249	13.47	9	184085.23	94987.98	9.47



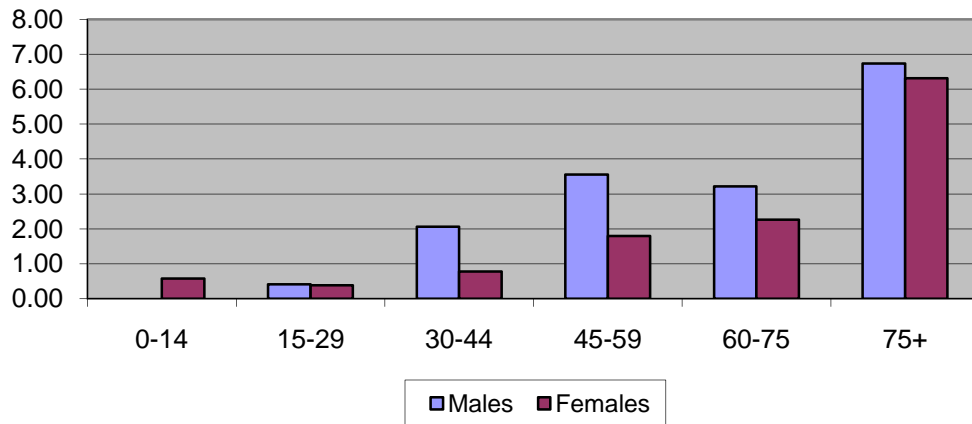
Follow-up

Age Group			Age Group		
M	F	Total	NID Cases		
0-14	0	3	3	0-14	2
15-29	2	2	4	15-29	2
30-44	10	4	14	30-44	9
45-59	13	7	20	45-59	15
60-75	8	6	14	60-75	10
75+	6	6	12	75+	11
	39	28	67		49

Age Group	LA Pop	IR Case	IR NID	Pop Male	IR Males	Pop Female	IR Female
0-14	1003532.56	0.30	0.20	485709.7614	0.00	517822.803	0.58
15-29	1011128.31	0.40	0.20	489386.1042	0.41	521742.21	0.38
30-44	999958.09	1.40	0.90	483979.7177	2.07	515978.377	0.78
45-59	756000.49	2.65	1.98	365904.237	3.55	390096.253	1.79
60-75	513383.31	2.73	1.95	248477.5226	3.22	264905.789	2.26
75+	184085.23	6.52	5.98	89097.24919	6.73	94987.9764	6.32



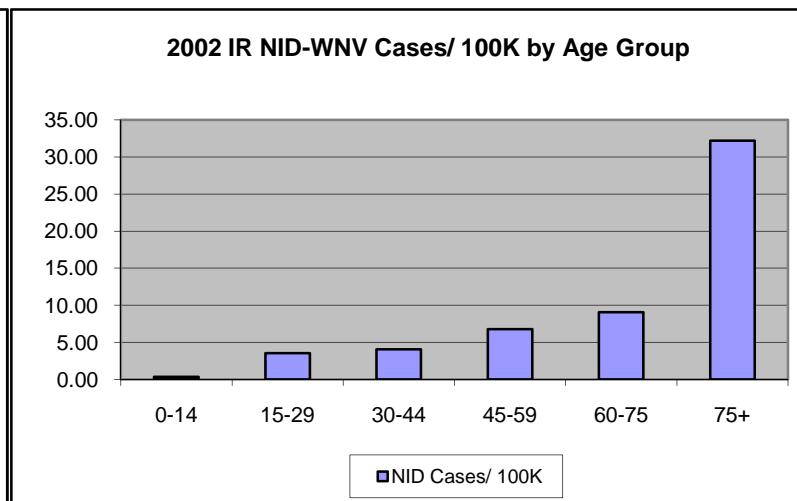
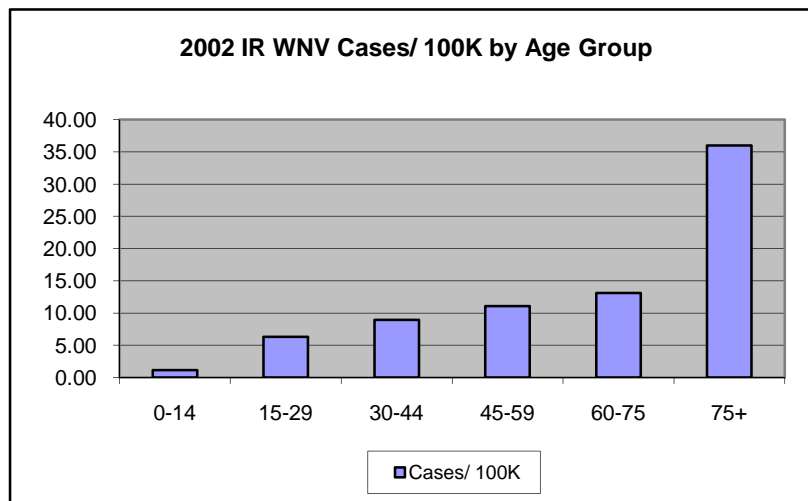
IR by Gender 2003 WNV Follow-up Cases



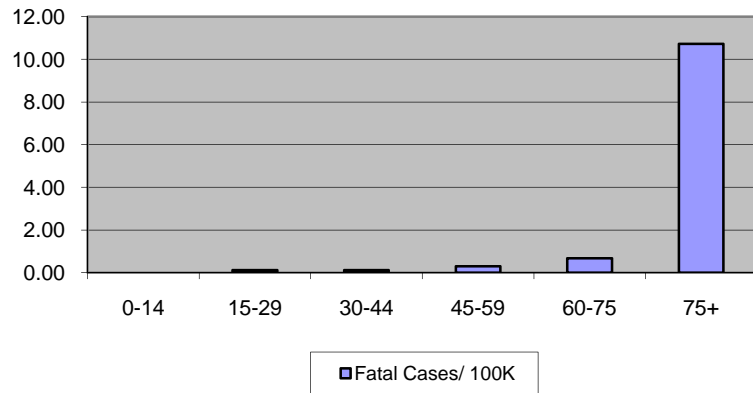
2002 WNV Cases

Age Group	Cases			Population		Cases /100K	Death /100K	Clinical Classification			ME /100K	
	M	F	Total					ME	Fever	Unk		
0-14		3	7	10	864145.8	1.16	0	0.00	3	7		0.35
15-29		26	29	55	870686.5	6.32	1	0.11	31	24		3.56
30-44		49	28	77	861067.8	8.94	1	0.12	35	40	2	4.06
45-59		39	33	72	650995	11.06	2	0.31	44	28		6.76
60-75		35	23	58	442076.4	13.12	3	0.68	40	17	1	9.05
75+		30	27	57	158516.5	35.96	17	10.72	51	6		32.17

Age Group	Cases M	Cases F	Population	IR		IR	
				Pop Male	IR Male	Pop Female	IR Female
0-14	3	7	864145.8	418246.6	0.72	445899.235	1.569861
15-29	26	29	870686.5	421412.3	6.17	449274.252	6.454855
30-44	49	28	861067.8	416756.8	11.76	444310.992	6.301892
45-59	39	33	650995	315081.6	12.38	335913.404	9.82396
60-75	35	23	442076.4	213965	16.36	228111.408	10.08279
75+	30	27	158516.5	76721.99	39.10	81794.5169	33.00955



2002 IR Fatal-WNV Cases/ 100K by Age Group



2002 IR WNV Cases/ 100K by Gender and Age Group

