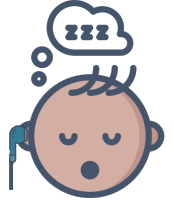


# What Families Need to Know

*Early Communication is Key*

Children who do not pass the initial newborn hearing screening and follow-up rescreening need to get a **diagnostic hearing test with an audiologist**. A diagnostic hearing test is a safe and painless series of tests that use special equipment to find out what your child can and cannot hear. It gives more detailed information than the hearing screenings your child has already had. **This test is the only way to know for sure if your child is deaf or hard of hearing.**



## IT'S IMPORTANT TO ACT FAST

Hearing issues can be easily missed in babies and young children. Even hearing loss in 1 ear can affect speech and language development. Identifying your child's hearing level early is the best way to help them stay on track with their communication development. The diagnostic hearing test should be done as **soon as possible**.



## HOW TO PREPARE FOR THE DIAGNOSTIC HEARING TEST

- Your child will need to be sleeping during the test. Try **not to let them nap** before the appointment. **Be prepared to feed them just before the testing** begins to help them fall asleep.
- **Do not put lotion or gel on your child** the day of their evaluation as it will make it more difficult to complete testing.
- Testing can take up to 2 hours to complete so please **come prepared with diapers, bottles, etc.**



## THE RESULTS

**When the testing has been completed, you will know the results of your child's hearing test.** If your child is diagnosed as deaf or hard of hearing, you will receive a call from the Early Hearing Detection & Intervention (EHDI) program. They will connect you with early intervention and family-to-family support services. These services can help support your child's language skills and overall development.

### WHERE TO SCHEDULE DIAGNOSTIC HEARING TESTING

*Schedule testing as soon as possible. You will likely need a referral from your baby's doctor to get testing.*

Facility: \_\_\_\_\_ Phone: \_\_\_\_\_

Date: \_\_\_\_\_ Time: \_\_\_\_\_



### HAVE MORE QUESTIONS OR NEED ASSISTANCE?

Contact the Early Hearing Detection and Intervention (EHDI) program at **504-599-1086** or email us at [laehdi@la.gov](mailto:laehdi@la.gov). For more information, visit us online at [ldh.la.gov/ehdi](http://ldh.la.gov/ehdi)

