

Partner/Provider COVID-19 Vaccine Update

January 5, 2022

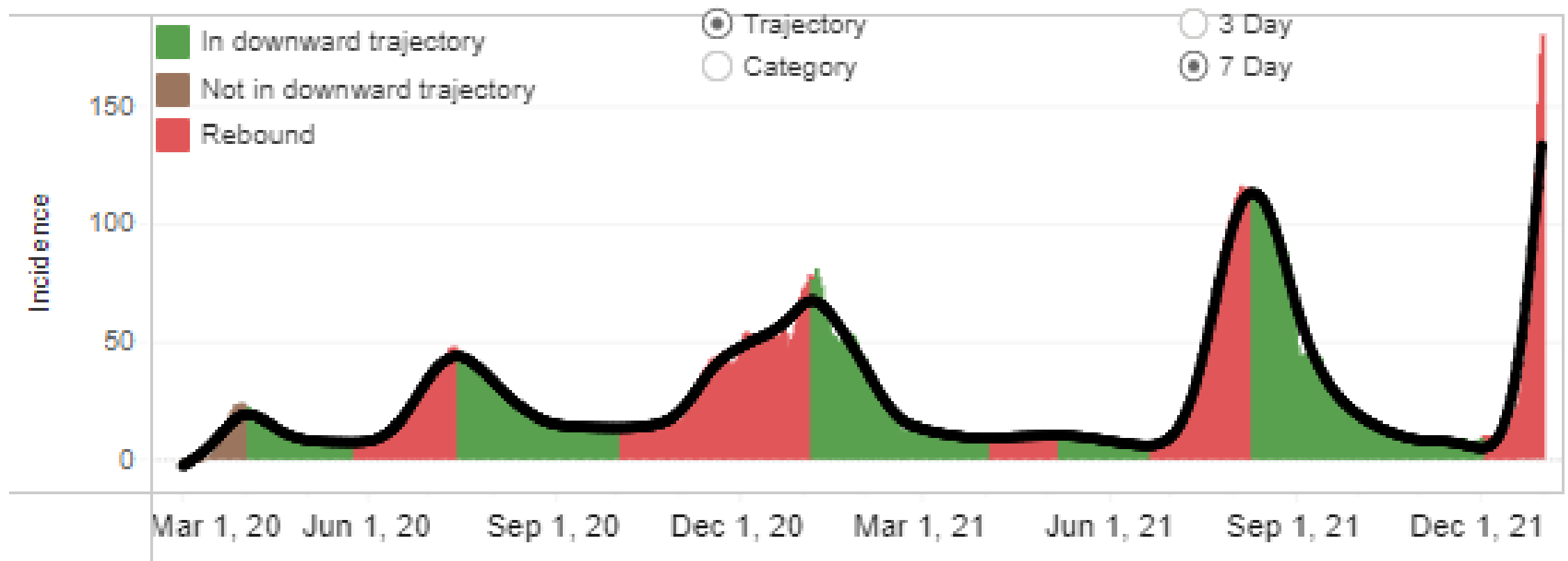
Agenda

- Disease Surveillance Update
- New CDC Recommendations
- New Pfizer **GRAY** Cap Product
- LA Youth Ambassadors
- Shot for 100 Program
- Latest Statistics
- Reporting Vaccine Adverse Events
- Q&A

As of January 4, 2022...

- Worldwide, **295 million+ cases** and **5.4 million+ deaths** have been identified
 - US: 57 million+ cases and 828,000+ deaths
 - Louisiana: 869,000+ cases and 15,000+ deaths

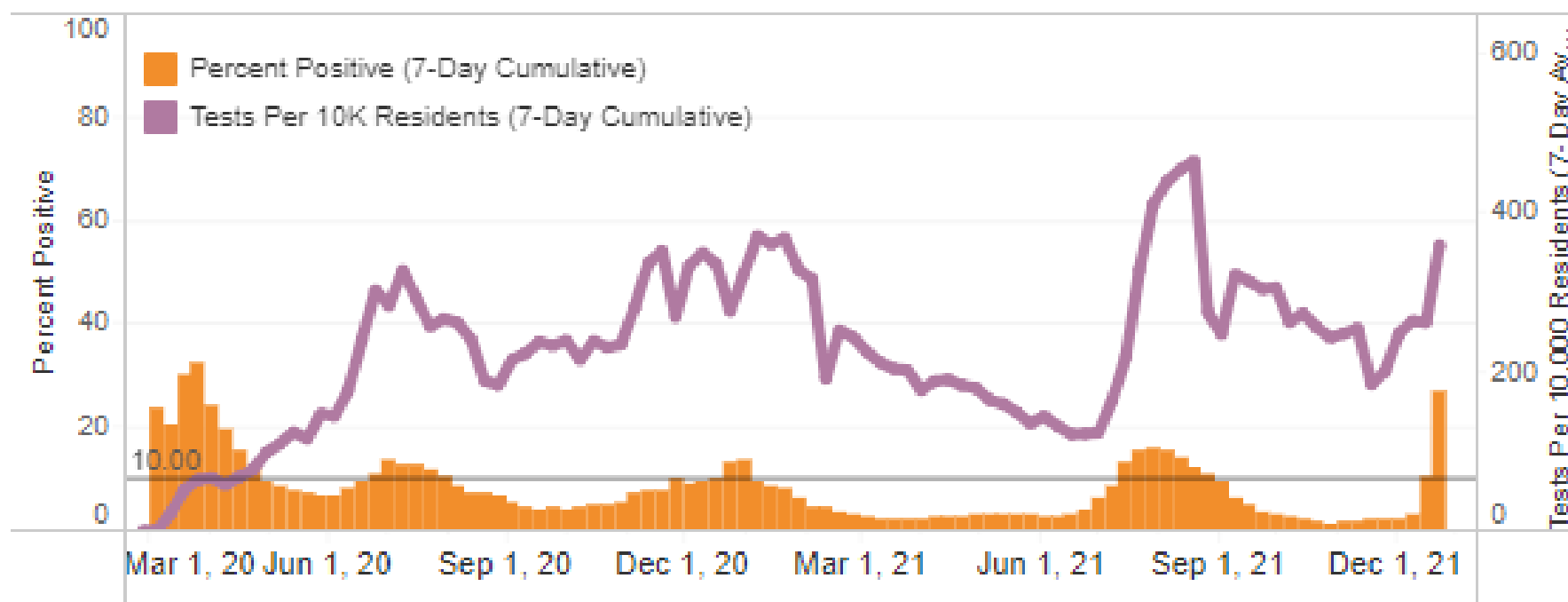
COVID-19 Incidence, Louisiana, March 2020-December 31



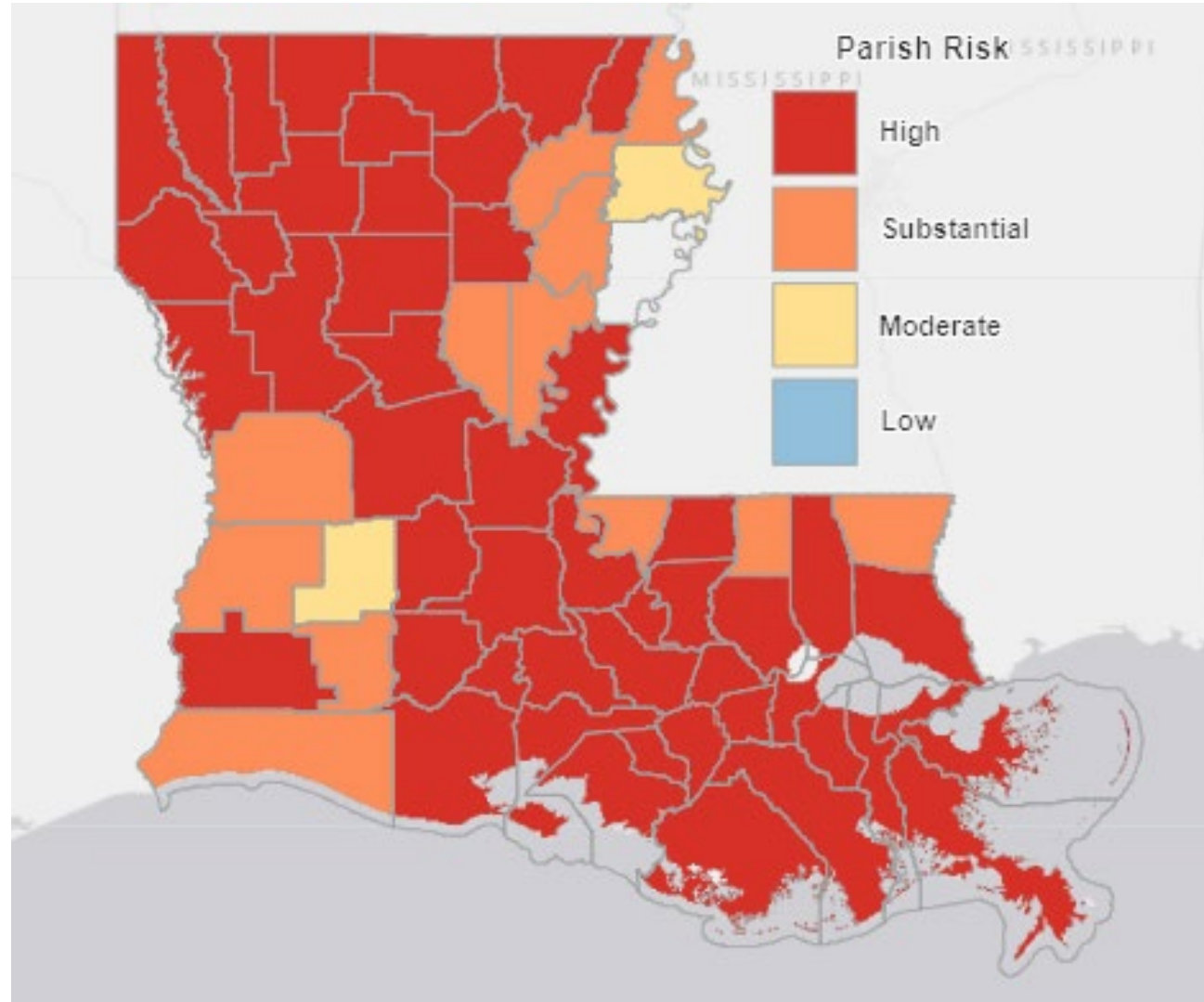
COVID-19 Percent Positivity and Test Volume, Louisiana

Tests
Completed as
of 1/4/21:
12,458,398

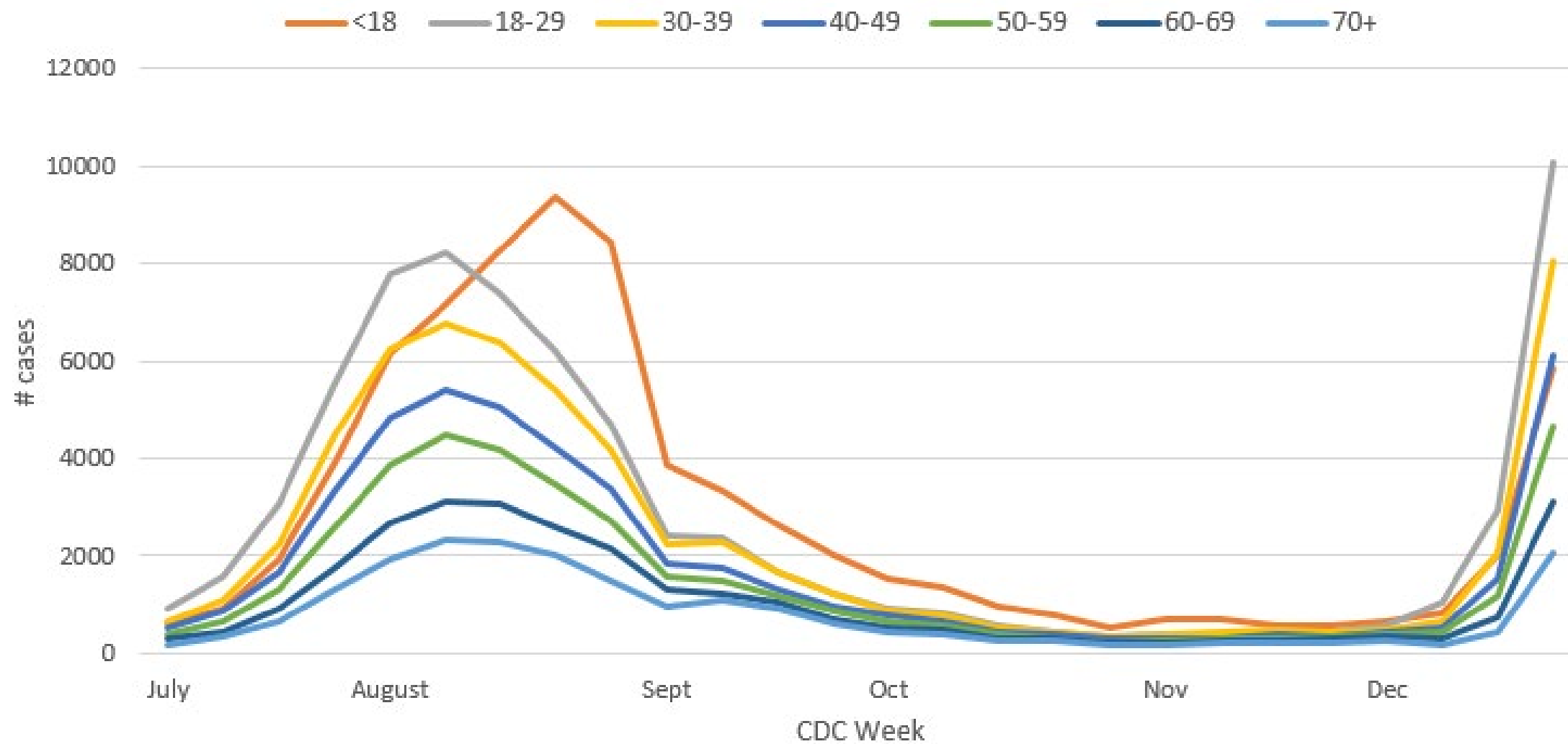
Statewide Percent Positivity and Test Volume



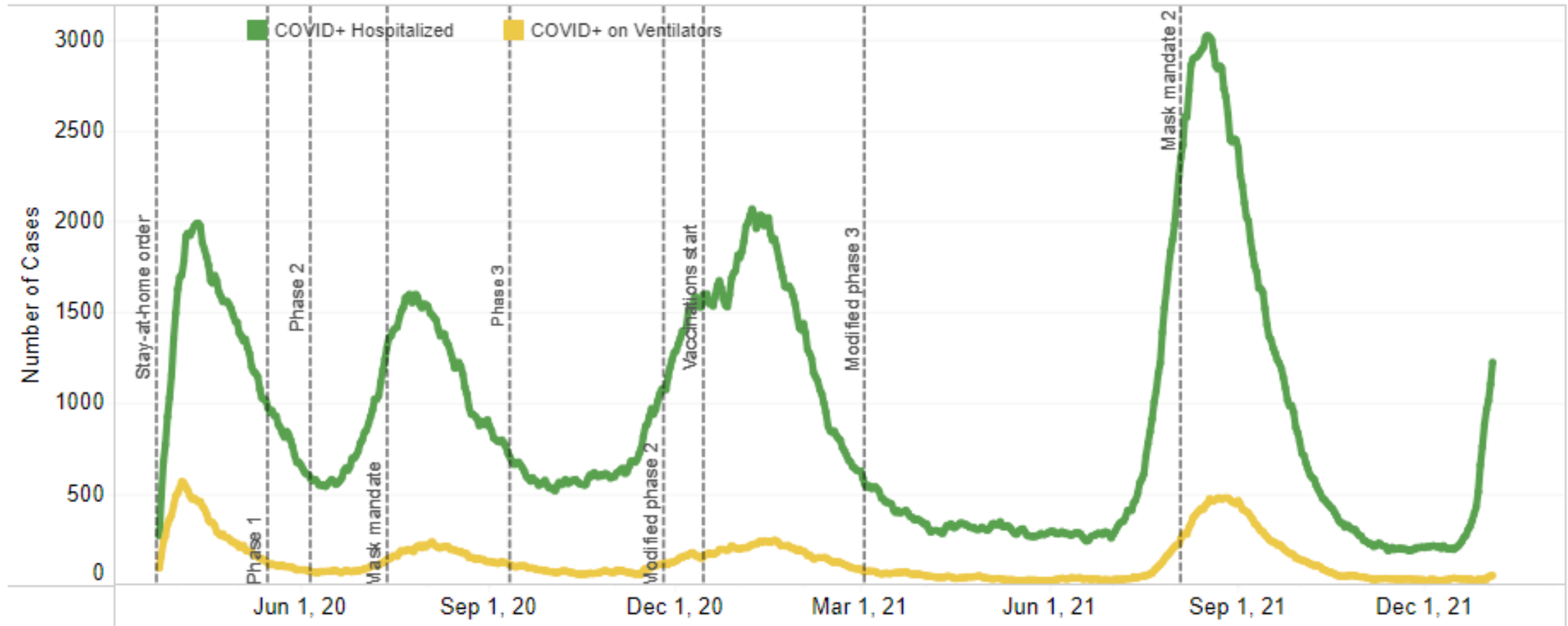
Community Risk by Parish as of December 22



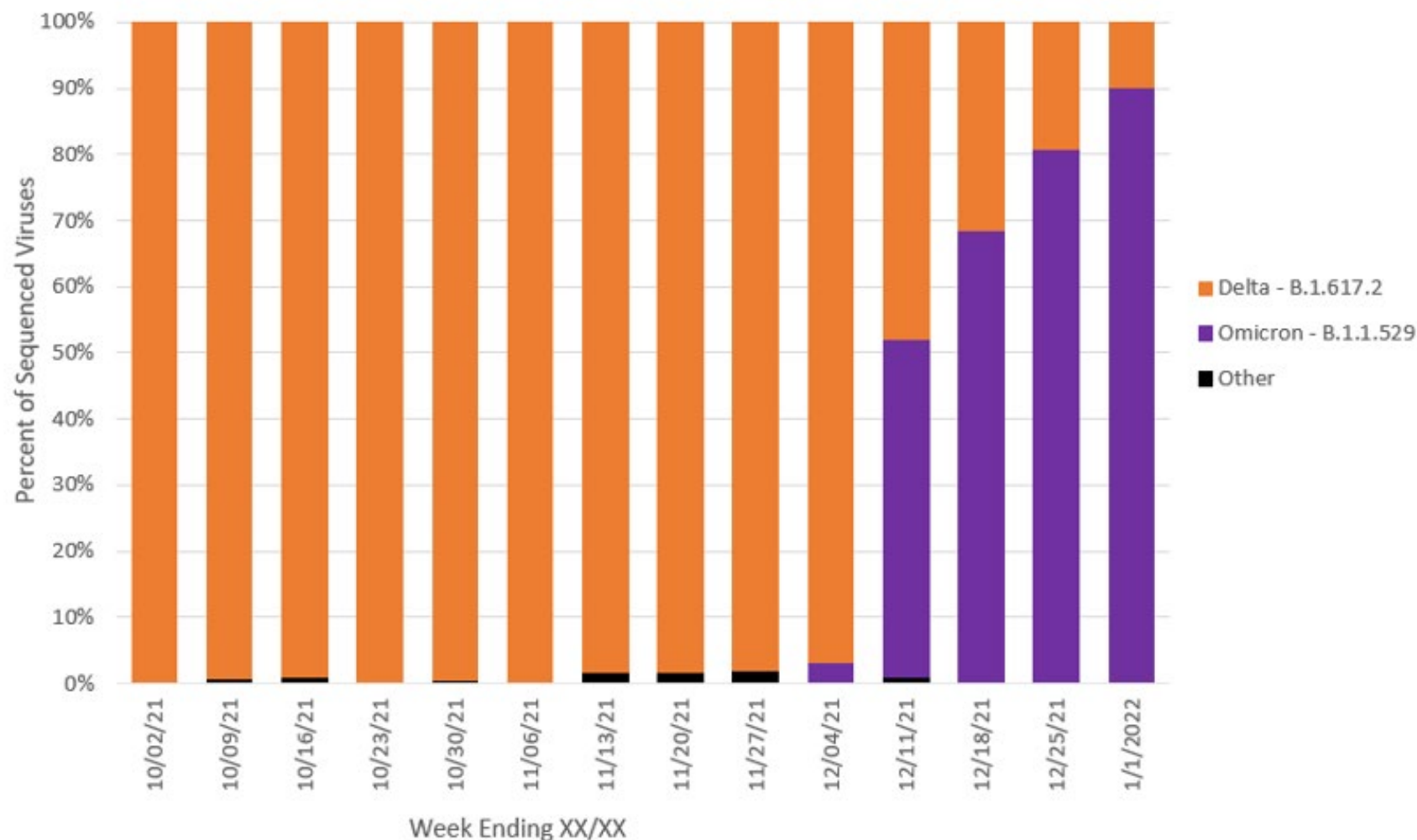
Louisiana COVID-19 cases by age group



Hospitalization and Ventilator Usage, Louisiana March 2020 - January 2022



Lineage Proportions, Louisiana, GISAID

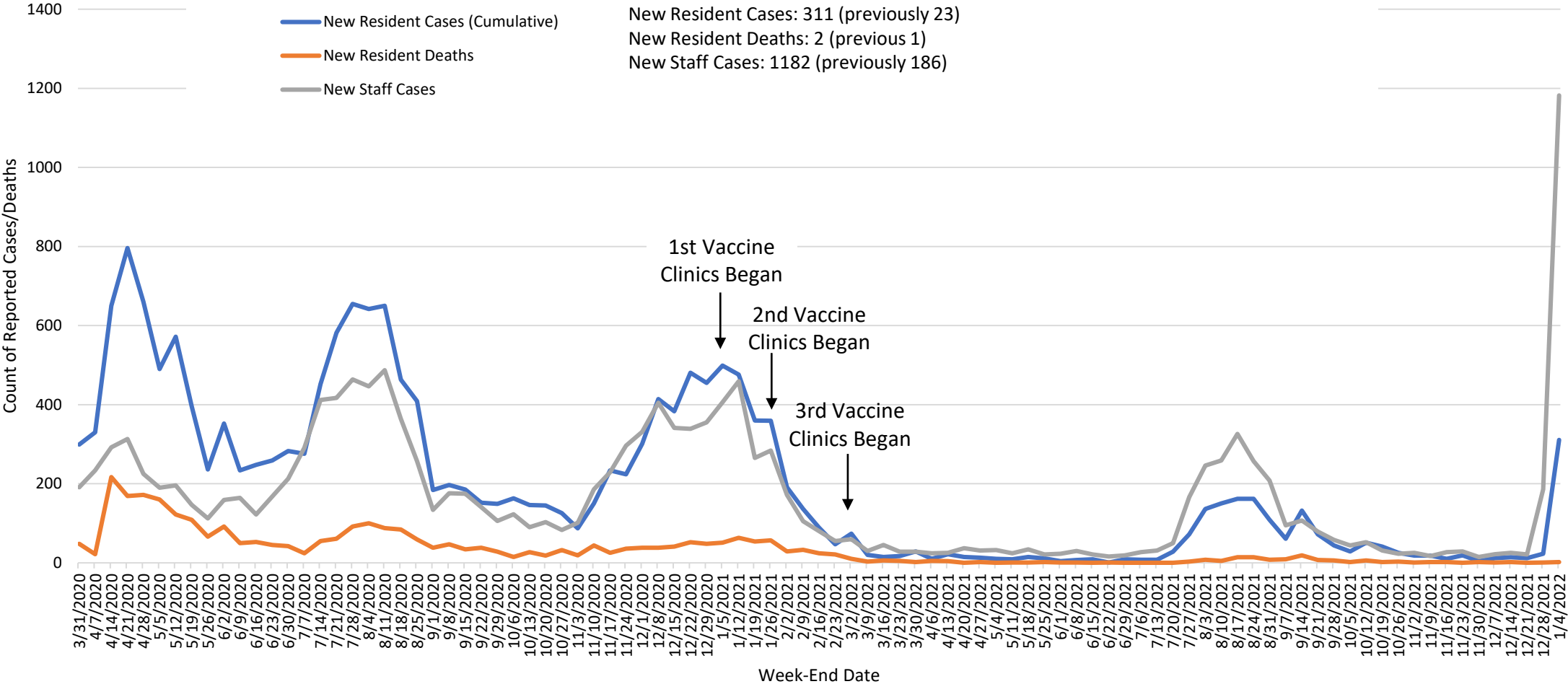


1 week period ending 01/01*:

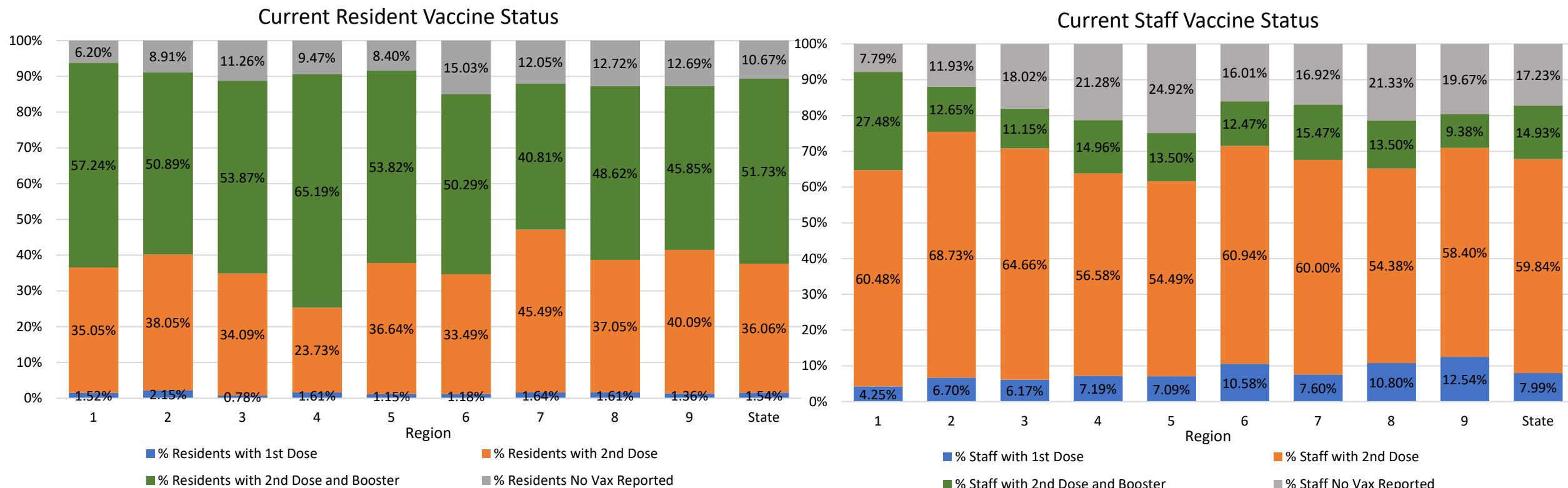
- Omicron: 90.2% (previously 80.8%)
- Delta: 9.8% (previously 19.2%)

*Limited sequences are available for the most recent reporting period. Estimated proportions are preliminary.

New Nursing Home COVID-19 Cases and Resident Deaths by Week



Louisiana Nursing Home Vaccination Status



CDC Recommendations: **Booster Shot**

- **Pfizer-BioNTech's wait interval is now 5 months (previously 6 months)**
 - Individuals who completed their Pfizer-BioNTech primary series can receive a booster 5 months after.
 - No changes for Moderna or Johnson & Johnson.



UPCOMING DECISIONS

The FDA action on January 3rd authorizing booster shots for children ages 12-15 will be discussed at an ACIP meeting this afternoon. When available, we will communicate CDC's decision. Providers are reminded to wait for the CDC recommendation before administering booster shots to this age group.

CDC Recommendations: **Additional Shot**

- **Moderately or severely immunocompromised 5- to 11-year-olds receive an additional primary dose of vaccine 28 days after their second shot.**
- Currently only Pfizer is authorized for 5- to 11-year-olds.



CDC Recommendations: Isolation Updates for the General Public

These recommendations are for the **GENERAL PUBLIC**.

Isolation is for those who have tested positive for COVID-19, whether symptomatic or asymptomatic, and should be followed whether vaccinated or unvaccinated.

- Individuals with COVID-19 should isolate for 5 days, and if they are asymptomatic or their symptoms are resolving (without fever for 24 hours) wear a mask when around others for the following 5 days.
 - Change is motivated by science demonstrating that the majority of SARS-CoV-2 transmission occurs early in the course of illness (generally in the 1-2 days prior to onset of symptoms and the 2-3 days after).



For more information on quarantine and isolation for the general public, go to <https://www.cdc.gov/coronavirus/2019-ncov/your-health/quarantine-isolation.html>.

CDC Recommendations: Quarantine Updates for the General Public

These recommendations are for the **GENERAL PUBLIC**.

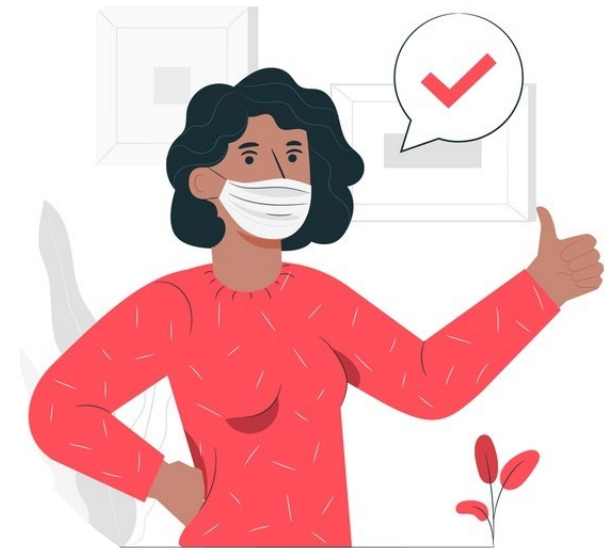
Quarantining is for those who might have been exposed to the virus and may or may not have been infected.

INDIVIDUALS WHO ARE NOT FULLY VACCINATED OR WHO ARE FULLY VACCINATED AND ARE ELIGIBLE FOR BUT HAVE NOT RECEIVED A BOOSTER

- For individuals who are unvaccinated or more than 6 months out from their second mRNA vaccine (more than 2 months out from their J&J vaccine) and not yet boosted, **quarantine for 5 days followed by strict mask use for an additional 5 days.**

INDIVIDUALS WHO ARE BOOSTED OR NOT YET ELIGIBLE FOR A BOOSTER

- **Do not need to quarantine, but should wear a mask around others for 10 days.**



For more information on quarantine and isolation for the general public, go to <https://www.cdc.gov/coronavirus/2019-ncov/your-health/quarantine-isolation.html>.

CDC Recommendations: Work Restrictions for Healthcare Personnel with COVID-19 Infection or Exposure

These recommendations are for **Healthcare Personnel**. Asymptomatic healthcare personnel who have had a high-risk exposure do not require work restriction if they have received all eligible COVID-19 vaccine doses, including booster dose and do not develop symptoms or test positive for SARS-CoV-2.

Work Restrictions for HCP With SARS-CoV-2 Infection and Exposures

HCP are considered “boosted” if they have received all COVID-19 vaccine doses, including a booster dose, as recommended by CDC. HCP are considered “vaccinated” or “unvaccinated” if they have NOT received all COVID-19 vaccine doses, including a booster dose, as recommended by CDC.

For more details, including recommendations for healthcare personnel who are immunocompromised, refer to Interim Guidance for Managing Healthcare Personnel with SARS-CoV-2 Infection or Exposure to SARS-CoV-2 (conventional standards) and Strategies to Mitigate Healthcare Personnel Staffing Shortages (contingency and crisis standards).

Work Restrictions for HCP With SARS-CoV-2 Infection

Vaccination Status	Conventional	Contingency	Crisis
Boosted, Vaccinated, or Unvaccinated	10 days OR 7 days with negative test [†] , if asymptomatic or mildly symptomatic (with improving symptoms)	5 days with/without negative test, if asymptomatic or mildly symptomatic (with improving symptoms)	No work restriction, with prioritization considerations (e.g., asymptomatic or mildly symptomatic)

Work Restrictions for Asymptomatic HCP with Exposures

Vaccination Status	Conventional	Contingency	Crisis
Boosted	No work restrictions, with negative test on days 2 [‡] and 5–7	No work restrictions	No work restrictions
Vaccinated or Unvaccinated, even if within 90 days of prior infection	10 days OR 7 days with negative test	No work restriction with negative tests on days 1 [‡] , 2, 3, & 5–7	No work restrictions (test if possible)

[†]Negative test result within 48 hours before returning to work

[‡]For calculating day of test: 1) for those with infection consider day of symptom onset (or first positive test if asymptomatic) as day 0; 2) for those with exposure consider day of exposure as day 0




For a larger view of this chart or for more information on interim guidance for managing healthcare personnel with SARS-CoV-2 infection or exposure, visit

<https://www.cdc.gov/coronavirus/2019-ncov/hcp/guidance-risk-assessment-hcp.html>.



New Pfizer GRAY Cap

- Starting this week, a new formulation of Pfizer vaccine for adults/adolescents will be made available; Pfizer **GRAY** cap formulation.
- The Pfizer **PURPLE** cap formulation will no longer be available for provider orders.

Description	Dilute Before Use	Do Not Dilute	Dilute Before Use
Age Group	12 years and older ^{1,2}	12 years and older ³	5 through 11 years ⁴ ("Age 5y to <12y" on vial label)
Vial Cap Color	Purple 	Gray 	Orange 
Dose	30 mcg	30 mcg	10 mcg
Dose Volume	0.3 mL	0.3 mL	0.2 mL
Amount of Diluent Needed per Vial*	1.8 mL	NO DILUTION	1.3 mL
Doses per Vial	6 doses per vial (after dilution)	6 doses per vial	10 doses per vial (after dilution)

New Pfizer GRAY Cap

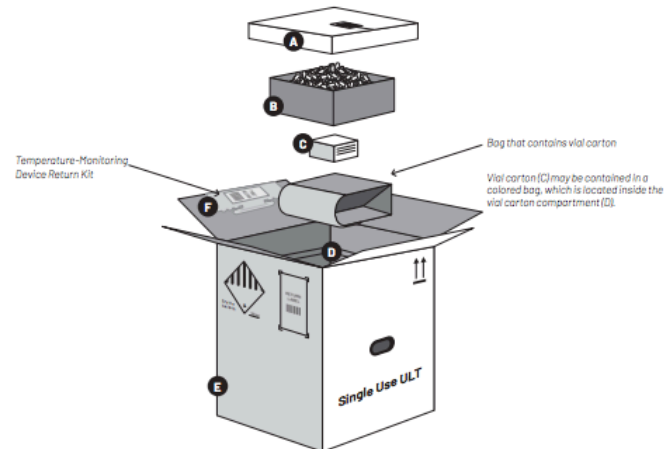
- The minimum order for direct shipment Pfizer is now **300 doses** (instead of 1170).
 - It will reduce further to just 100 in the coming months.
- Providers can still order smaller quantities (as little as one vial of vaccine) through M&D.

CONTENTS AND PACKAGING

There are multiple types of thermal shipping containers and vial carton sizes, all with similar components.

The example shown below is for illustrative purposes only and may not exactly replicate the thermal shipping container you receive.

Be sure to read all instructions that are included with the thermal shipping container and its components.



The thermal shipping container you received may vary in weight and should be opened on the floor, as it may be heavy.

Item	Description
A FOAM LID	Removable top foam lid that includes an embedded Temperature-Monitoring Device
B DRY ICE POD	Holds the top layer of dry ice
C VIAL CARTONS	Each vial carton contains multiple dose vials and may appear different, depending on the size of your order
D VIAL CARTON COMPARTMENT	Area that holds the vial cartons within the Single-Use Thermal Shipping Container
E THERMAL SHIPPING CONTAINER	Outer box of the Single-Use Thermal Shipping Container
F TEMPERATURE-MONITORING DEVICE RETURN KIT	Kit used to return the Temperature-Monitoring Device that is embedded in the foam lid

New Pfizer GRAY Cap

- This product **CAN NO LONGER BE STORED IN THE FREEZER.**
 - Direct Vaccine Shipments will arrive Ultra-Cold.
 - Vaccine received this way can either be stored in an ULT Freezer for up to 9 months or moved to the refrigerator for up to 10 weeks.
 - M&D Vaccine Shipments will arrive refrigerated.
 - Vaccine received this way can be stored in the refrigerator for up to 10 weeks.
- DO NOT REFREEZE.**

Storage Conditions

Storage Conditions	Direct Vaccine Shipments (ULT Freezer)	M&D Vaccine Shipments (Refrigerator)	Both (Refrigerator)
Ultra-Low-Temperature (ULT) Freezer [-90°C to -60°C (-130°F to -76°F)]	9 months†	9 months	9 months
Freezer [-25°C to -15°C (-13°F to 5°F)]	2 weeks	DO NOT STORE	DO NOT STORE
Refrigerator [2°C to 8°C (35°F to 46°F)]	1 month	10 weeks	10 weeks
Room Temperature [8°C to 25°C (46°F to 77°F)]	2 hours prior to dilution (including any thaw time)	12 hours prior to first puncture (including any thaw time)	12 hours prior to dilution (including any thaw time)
After First Puncture [2°C to 25°C (35°F to 77°F)]	Discard after 6 hours	Discard after 12 hours	Discard after 12 hours

New Pfizer GRAY Cap

- The **GRAY** Cap formulation will be shipped in the same **SINGLE USE** thermal shippers as the **ORANGE** cap formulation. Single use shippers cannot be used for temporary storage.
- If additional redistribution is needed, undiluted **GRAY** or **ORANGE** cap vials may be transported at refrigerated or ultra cold temperatures
 - If vials are delivered at refrigerated temp (i.e. M&D), they need to stay at refrigerated temp
 - Once removed from the shipper (if received directly) **GRAY** or **ORANGE** cap vial cartons may be at room temperature for up to 5 minutes (allowing for transport to an ULT Freezer if available)

New Pfizer GRAY Cap

- The **GRAY** cap product **DOES NOT REQUIRE DILUENT**. Providers will no longer receive diluent with their ancillary supplies for this product and should not dilute any gray cap Pfizer vaccine.

Vial Storage During Use

Applicable to the following cap colors:

GRAY
(Ages 12+)
DO NOT DILUTE



Dose Preparation

- The vaccine **does not contain preservative** and is provided as a **multiple dose vial**.
- Each vial must be thawed prior to administration.
- DO NOT DILUTE** prior to use.
- One vial contains 6 doses of 0.3 mL.

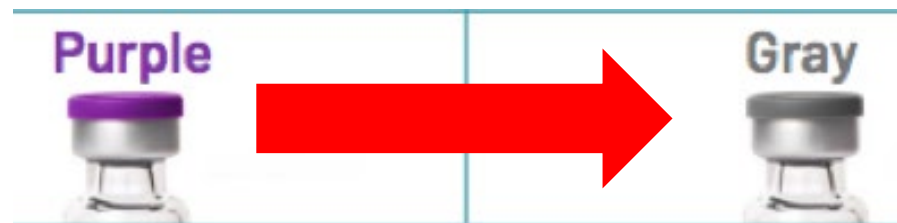
Storage & Timing Considerations

- Gray cap** vaccine may be stored at room temperature [8°C to 25°C (46°F to 77°F)] for a total of **12 hours prior to the first puncture**.
- After first puncture, the vial should be held between 2°C to 25°C (35°F to 77°F).
- Vials should be discarded **12 hours* after the first puncture**.
- During storage, **minimize exposure to room light**, and avoid exposure to **direct sunlight and ultraviolet light**.
- Do not refreeze thawed vials.

*Gray cap vial labels and cartons may state that a vial should be discarded 6 hours after the first puncture. **The information in the EUA Fact Sheet (12 years and older/DO NOT DILUTE) supersedes the number of hours printed on vial labels and cartons.**

New Pfizer GRAY Cap

- The Pfizer **GRAY** cap formulation is an approved alternative to the Pfizer **PURPLE** cap formulation; meaning if an individual received their first dose of the diluted **PURPLE** cap product, they can receive their second dose (or booster) with the non-diluted **GRAY** cap product
- Any **PURPLE** cap vaccine still on hand (that has not expired) is still viable for use and should not be discarded. All **PURPLE** cap vaccine should be utilized FIRST (before **GRAY** cap vaccine) to prevent any administration/storage errors



New Pfizer GRAY Cap

- The Date of Manufacture is printed on the **GRAY** cap vials, not the expiration date (just like the Pfizer pediatric **ORANGE** cap product).
- To determine expiry for ULT direct shipped **GRAY** cap vaccine, count 9 months from the date of manufacture (Please include the month of the “date of manufacture” in the calculation).
- *For example, if 9/2021 is printed on the vial the vaccine would expire May 31, 2022*
- To determine expiry for refrigerated M&D shipped **GRAY** cap vaccine, count 10 weeks from the day you received the vaccine. (Note: the “true” 9-Month expiration date should still be logged in LINKS)

New Pfizer GRAY Cap

- A HAN, with all these details and more, will be distributed to all providers soon (prior to any **GRAY** cap deliveries)
- M&D will also include a 1-Pager in their deliveries with key details about the new storage/administration conditions during this transition

Additional Resources:

*GRAY Cap EUA Factsheet: <https://www.fda.gov/media/153715/download>

*CDC Website: <https://www.cdc.gov/vaccines/covid-19/info-by-product/pfizer/bioNTech-gray-cap-12-and-over.html>

*Pfizer Website: <https://www.cvdvaccine-us.com/product-storage-and-dry-ice>

LA Youth Ambassadors

As a member of the LA Youth Ambassador Campaign, those who join will:

- Meet monthly with public health professionals and marketing experts
- Provide key feedback on all aspects of the campaign, including the swag, logo, website and messaging
- Create and develop their own vaccine social media posts and infographics
- Learn about benefits of getting the shot
- Conduct trainings and events to educate and rally other youth in their community
- Serve as statewide ambassadors for COVID-19 vaccinations



A promotional poster for the LA Youth Ambassadors campaign. The top section has a dark blue background with the word "WANTED" in large, bold, white letters. Below it, a red banner contains the text "VACCINE YOUTH AMBASSADORS" in white. The middle section has a light blue background with the text "Submit your application today to help improve Louisiana's COVID-19 vaccination rates." Below this is a photograph of a young woman and a young man. The woman is pointing to a bandage on her shoulder, and the man is also pointing to a bandage on his shoulder. The bottom section has a red background with the text "APPLY NOW!" and the URL "https://www.layouthambassadors.org/". In the bottom right corner, there is a logo that says "BRING BACK LOUISIANA" with a small graphic of a person.

WANTED
VACCINE YOUTH AMBASSADORS

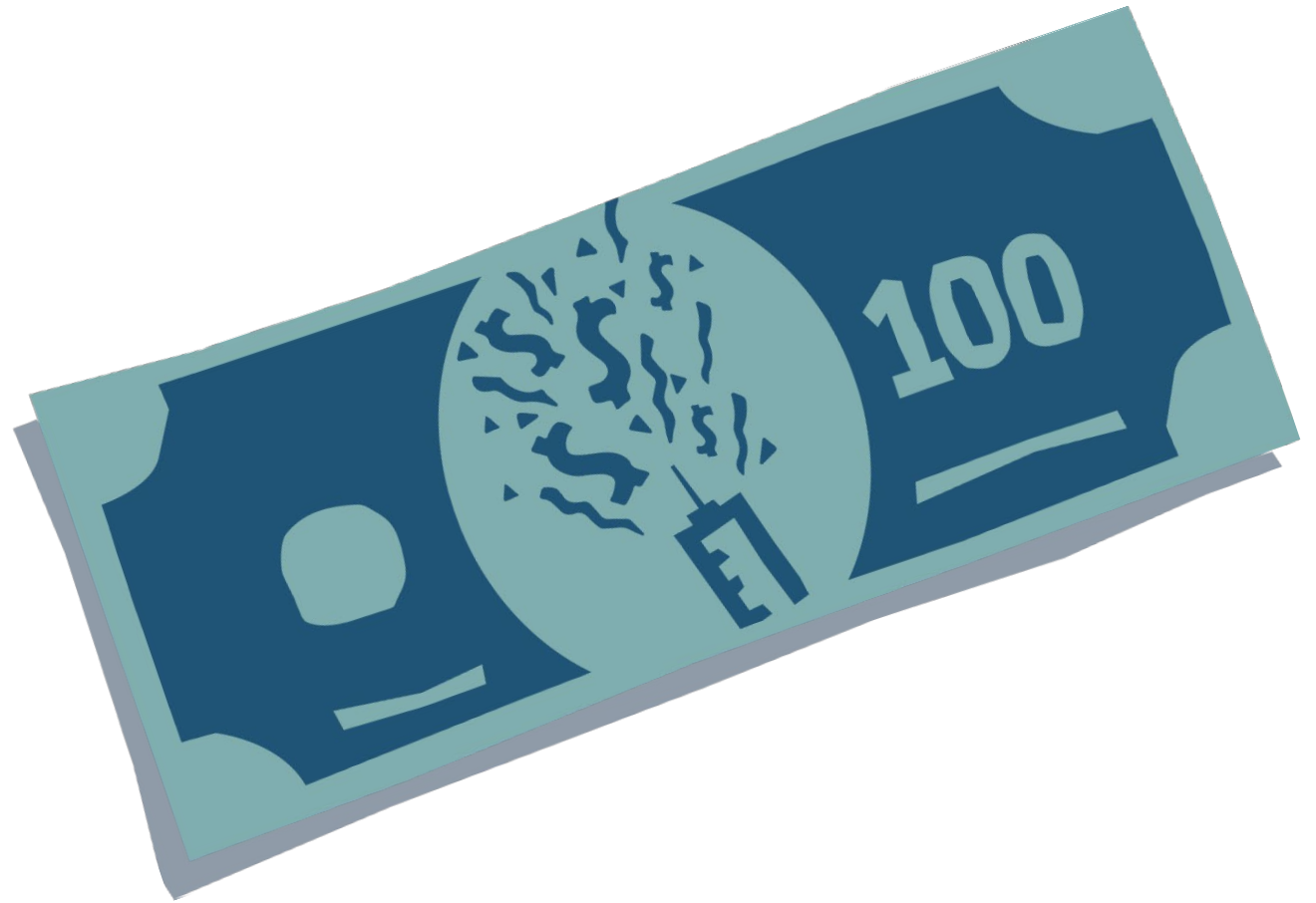
Submit your application today to help improve Louisiana's COVID-19 vaccination rates.

APPLY NOW!
<https://www.layouthambassadors.org/>

BRING BACK LOUISIANA

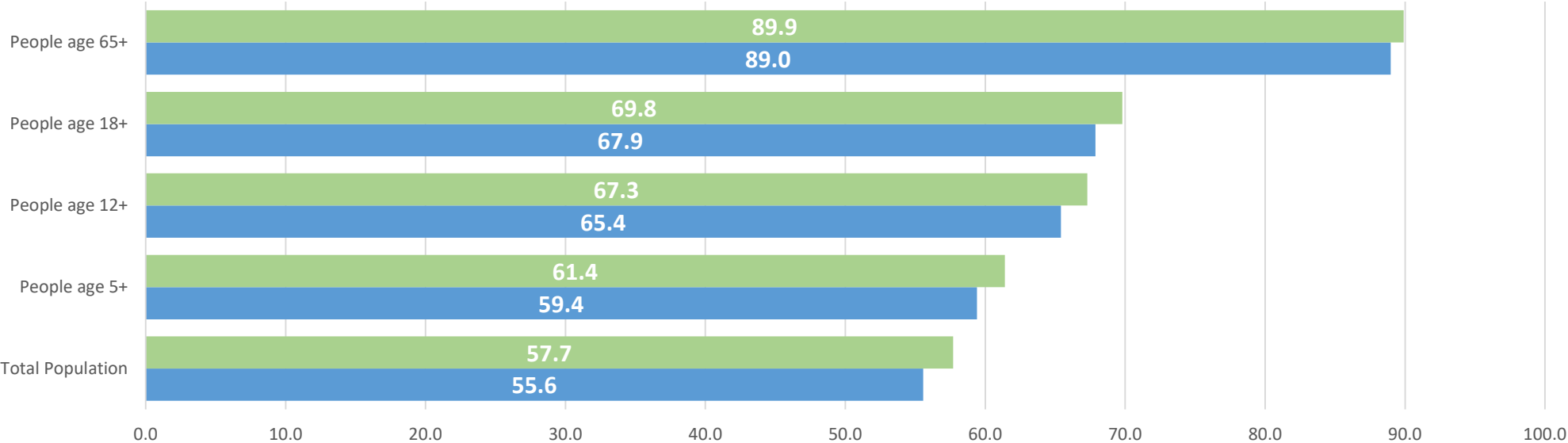
Shot for \$100 Program

- There are around **16,000 cards remaining.**
- The remaining cards will be issued at parish health units (PHU) and Louisiana Army National Guard (LANG) events for the next two weeks until all cards are distributed.

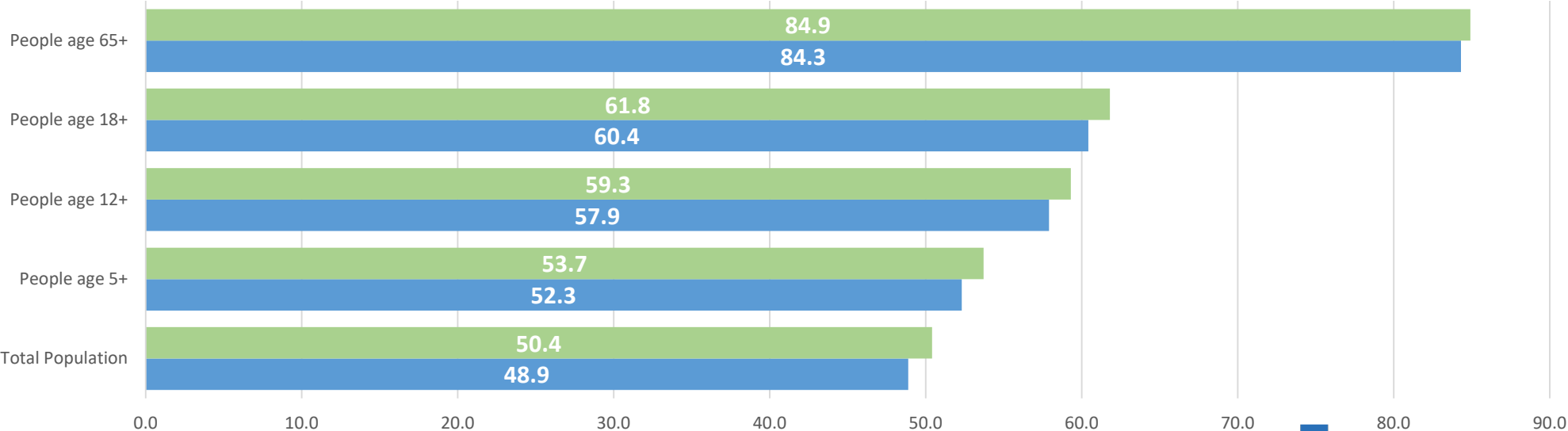


People vaccinated in LA (1/4/22)

At least
one dose

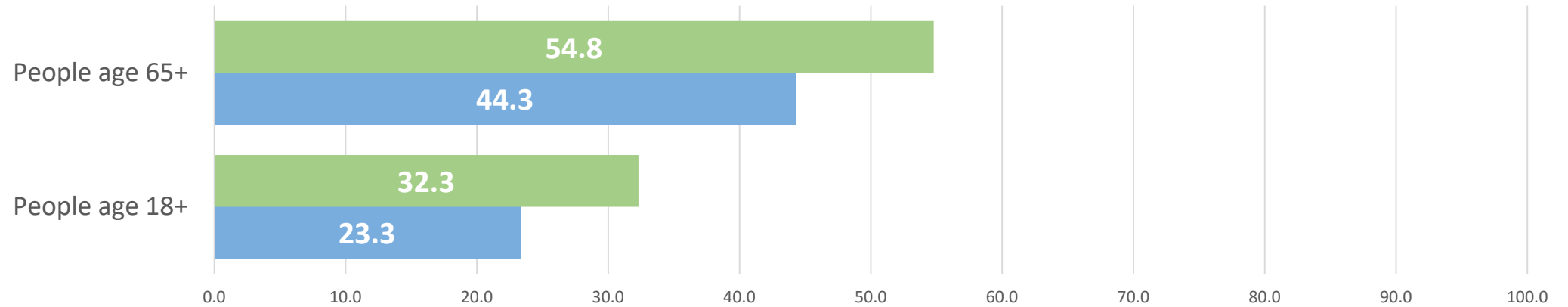


Completed
Series



People vaccinated in LA (1/4/22)

Additional Doses

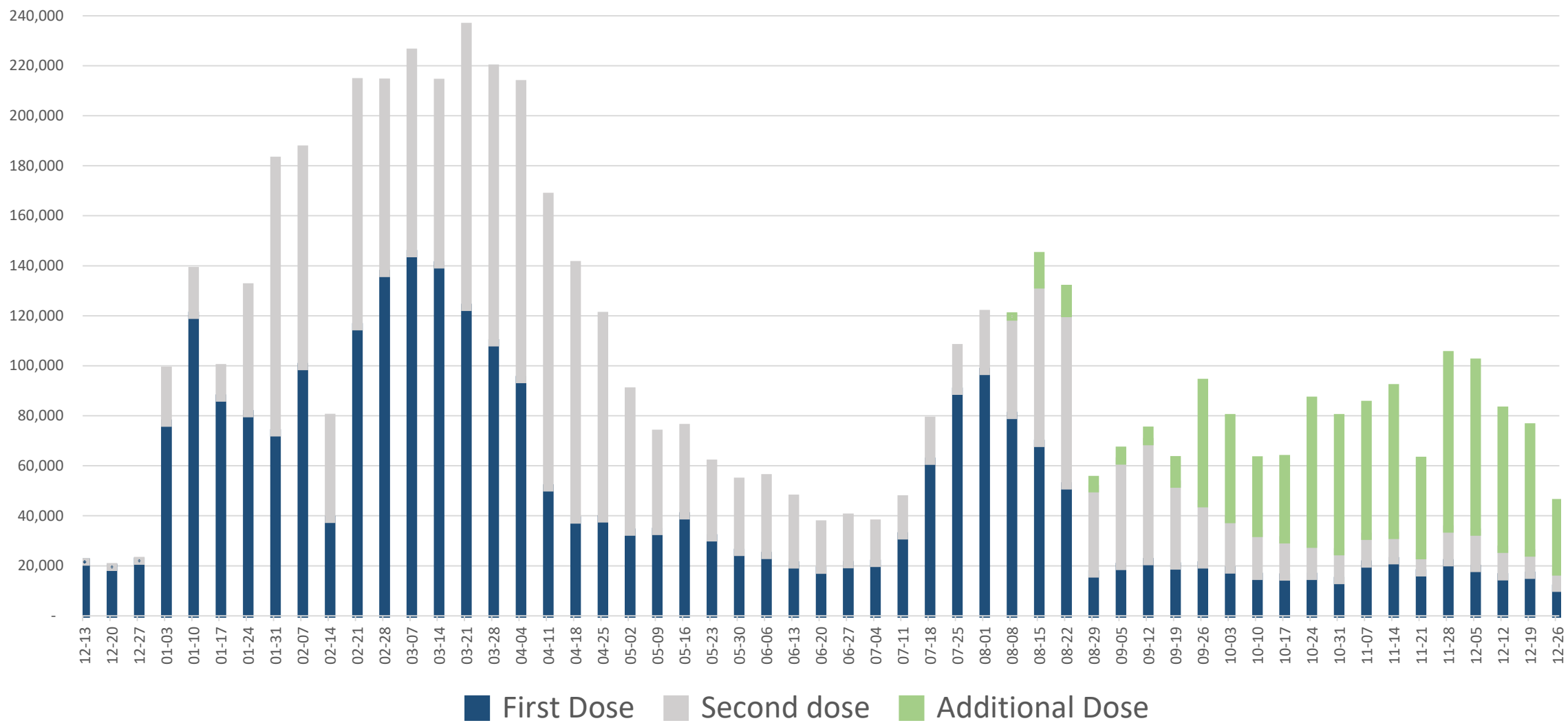


Cumulative doses administered: 5,685,689

Cumulative doses delivered: 6,821,540

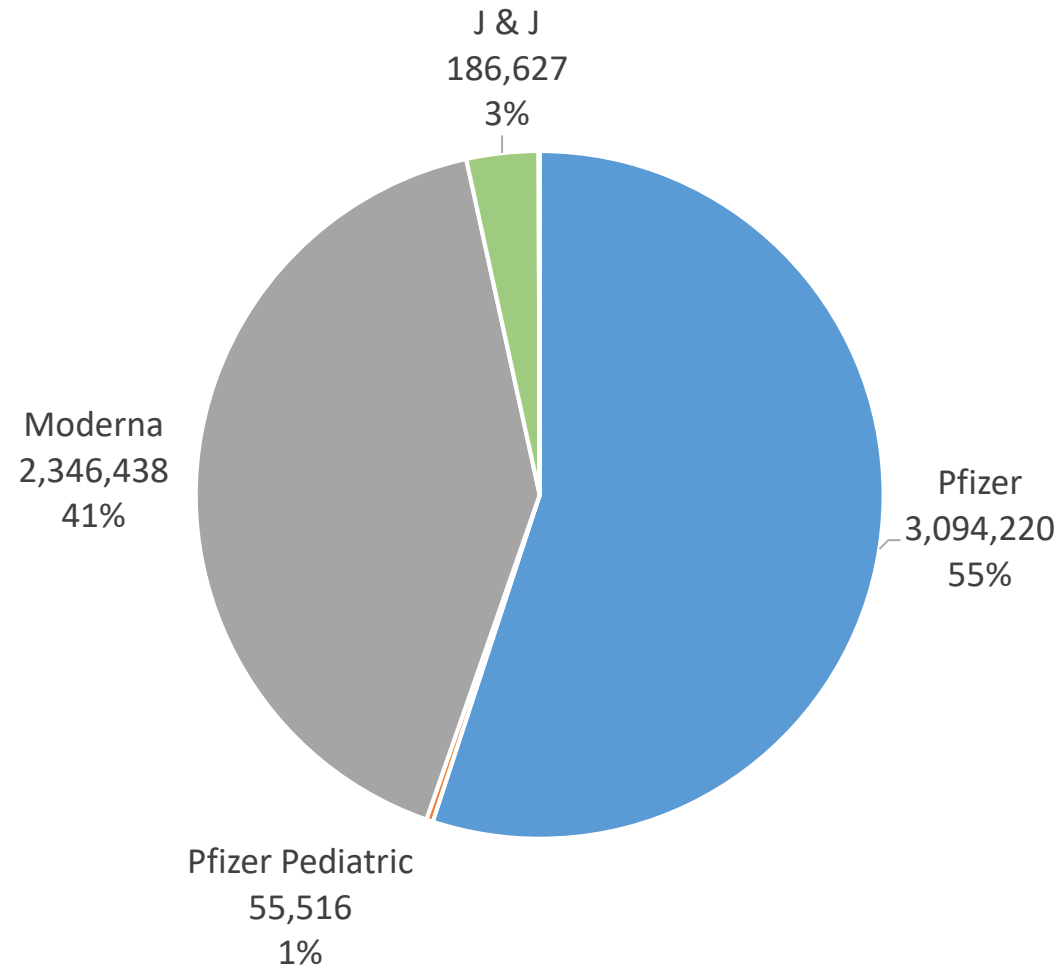
% of delivered doses administered: 83.3% (12/6 was 79.2%)

Doses administered per week by vaccine number (1/4/22)

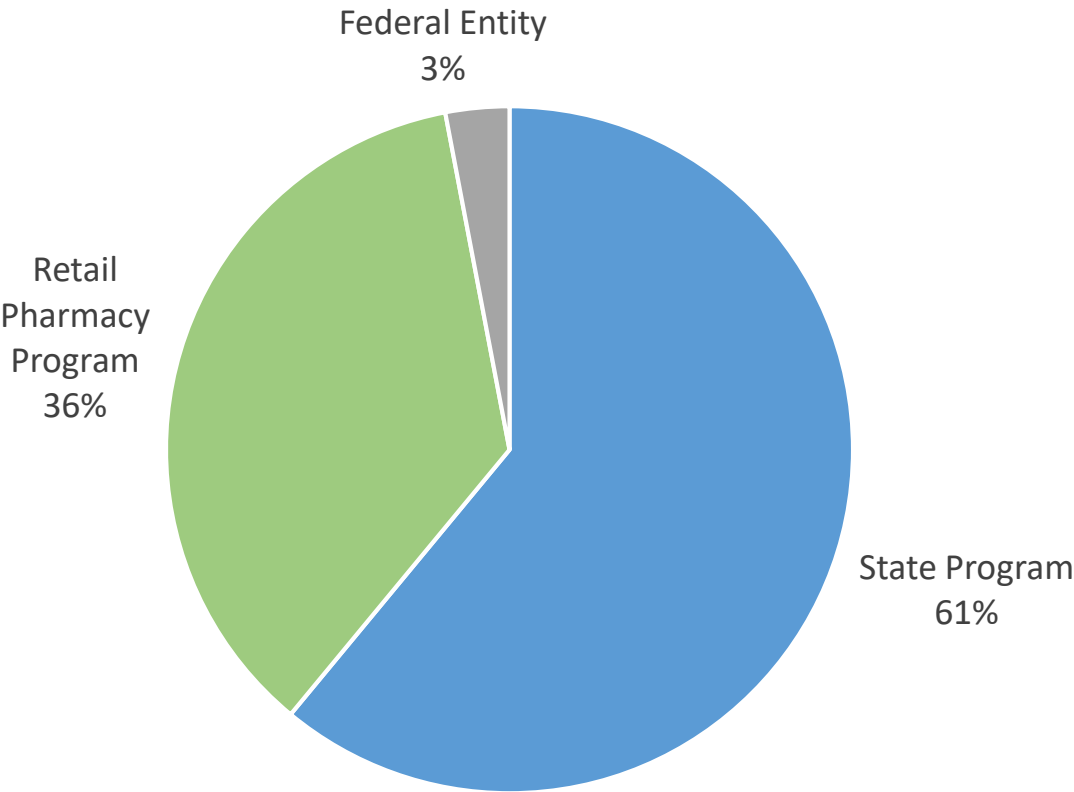


Doses administered (1/4/22)

By Vaccine Type:



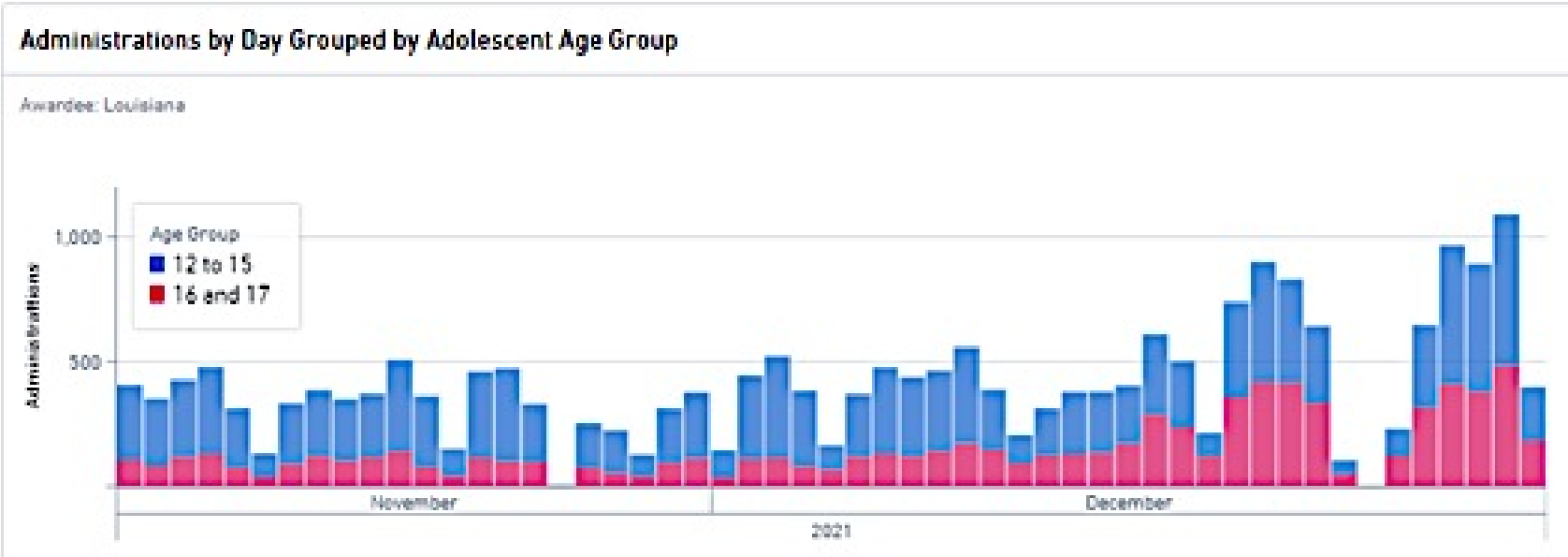
By Vaccine Channel:



Adolescent Doses administered (1/4/22)

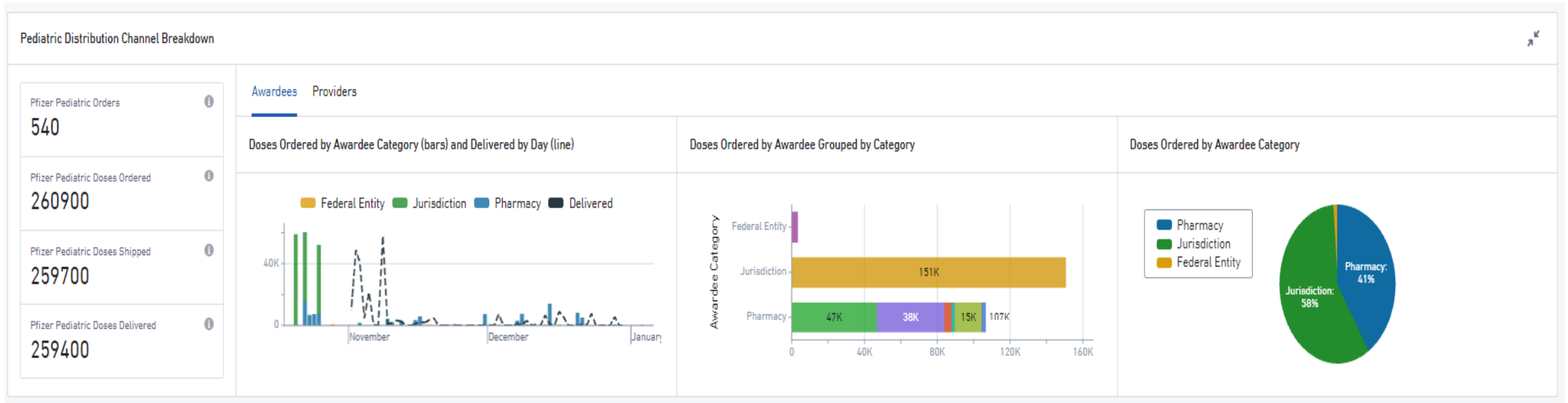
Age Group	First Dose #	First Dose %	Series Complete #	Series Complete %
12-15	102,107	41.92%	81,180	33.33%
16-17	54,201	45.71%	44,803	37.38%

Source: Tiberius 1/4/22
 % based on 2019 Census data



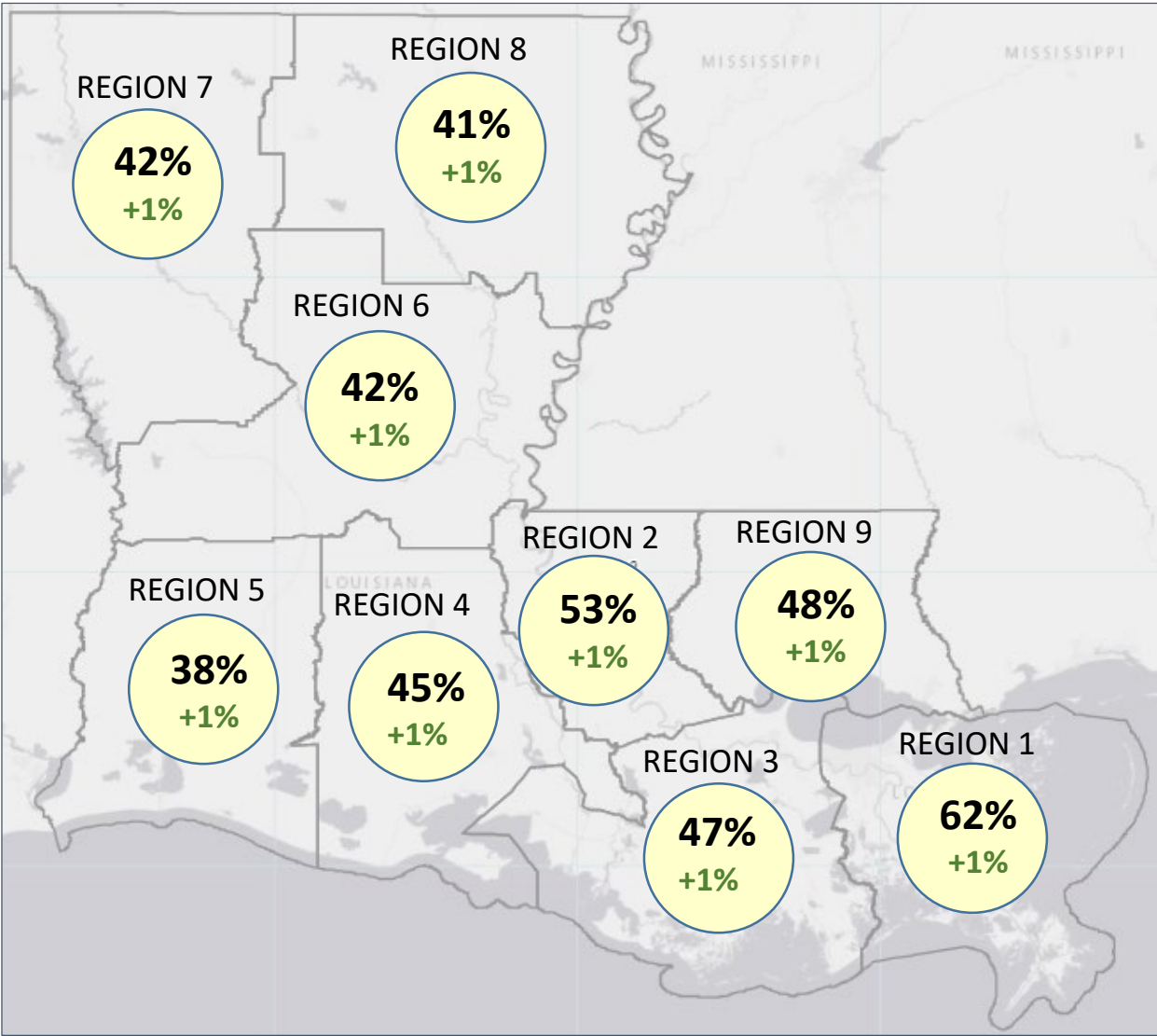
6/30-7/6	3,184
7/7-7/13	4,626
7/14-7/20	6,450
7/21-7/27	8,910
7/28-8/3	11,750
8/4-8/10	15,136
8/11-8/17	13,237
8/18-8/24	13,473
8/25-8/31	10,974
9/1-9/7	2,955
9/8-9/14	6,633
9/15-9/21	5,935
9/22-9/28	3,904
9/29-10/5	3,236
10/6-10/12	1,562
10/13-10/19	2,278
10/20-10/26	2,017
10/27-11/2	1,529
11/3-11/9	1,429
11/10-11/16	1,704
11/17-11/23	1,608
11/24-11/30	1,058
12/1-12/7	1,551
12/8-12/14	1,927
12/15-12/21	1,931
12/22-12/28	1,552
12/29-1/4	3,416

Pediatric Doses administered (1/4/22)



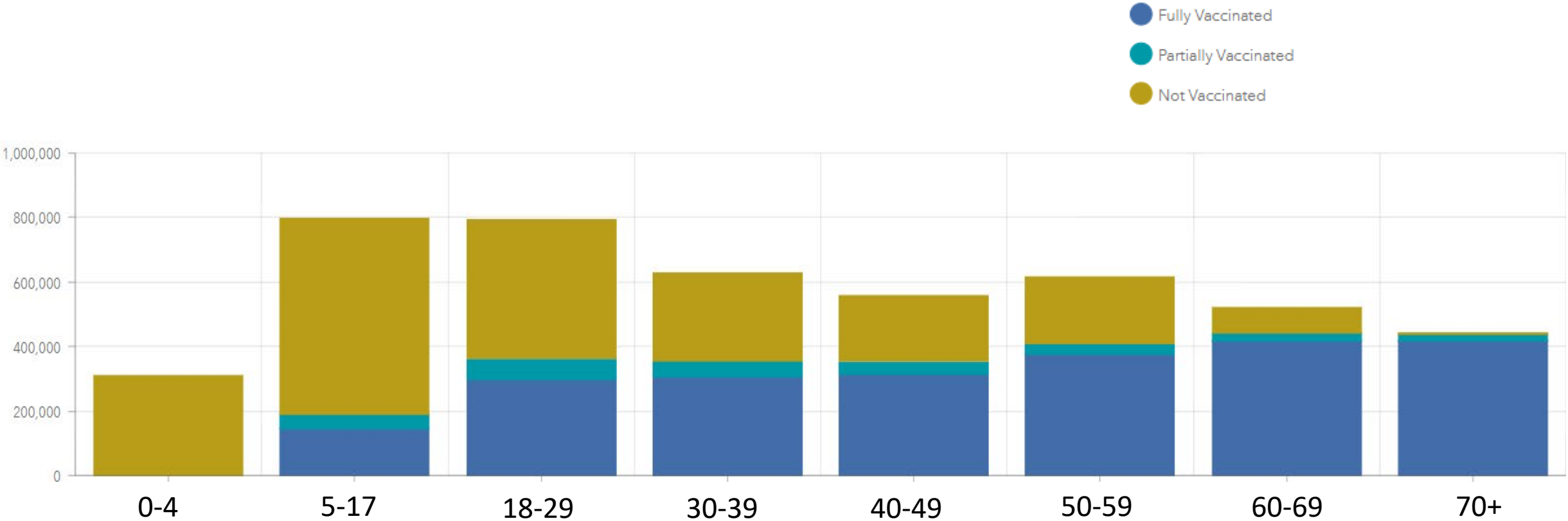
- **89% of VFC Providers are now enrolled COVID-19 Providers (up from 41% in June 2021)**
- **39,116 5-11-year-olds with at least one dose (10,187 more than 12/21)**
- **16,563 5-11-year-olds series completed (4,950 more than 12/21)**

COVID-19 vaccination coverage by region (1/4/22)

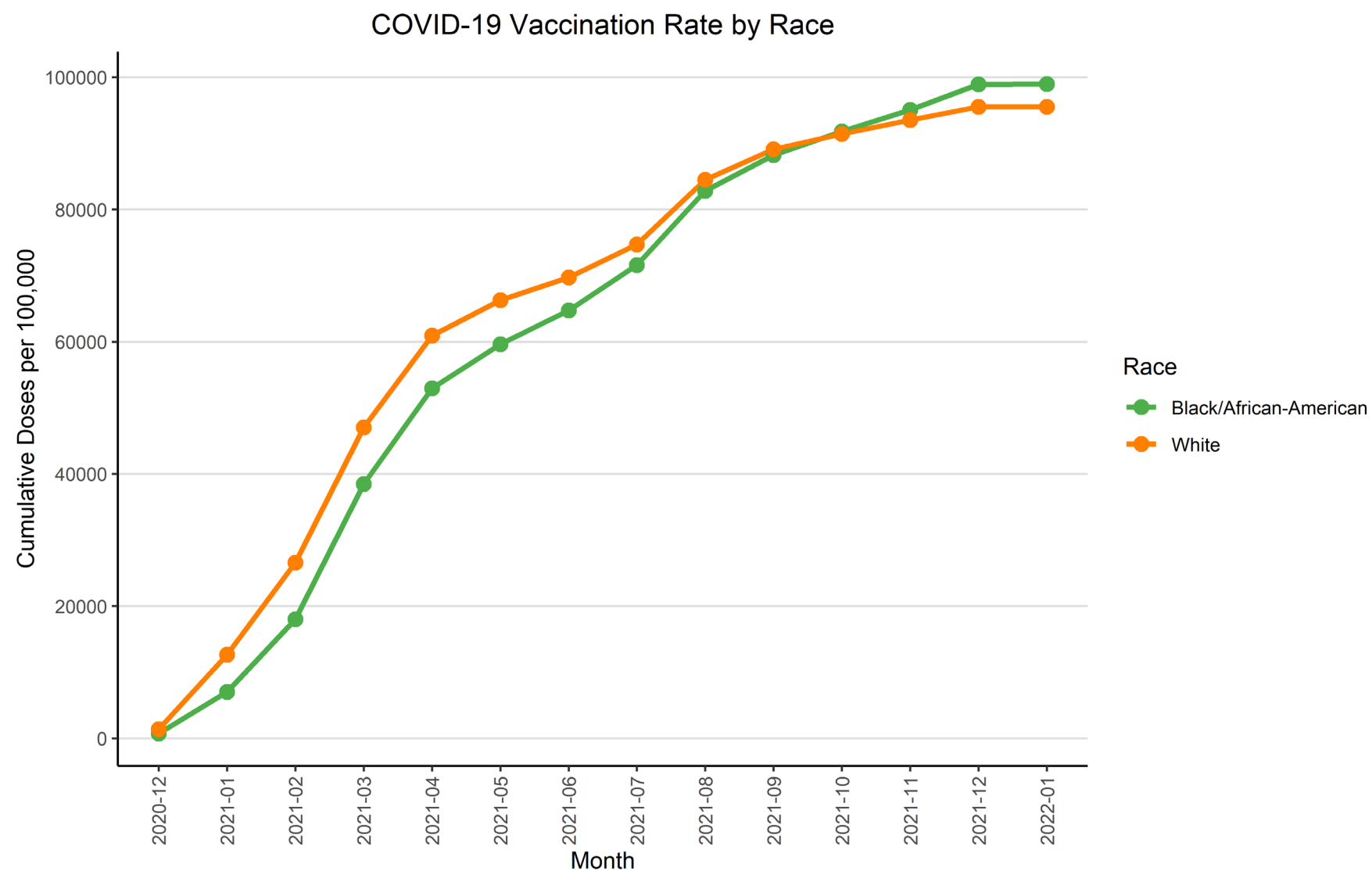


Source: ldh.la.gov/coronavirus

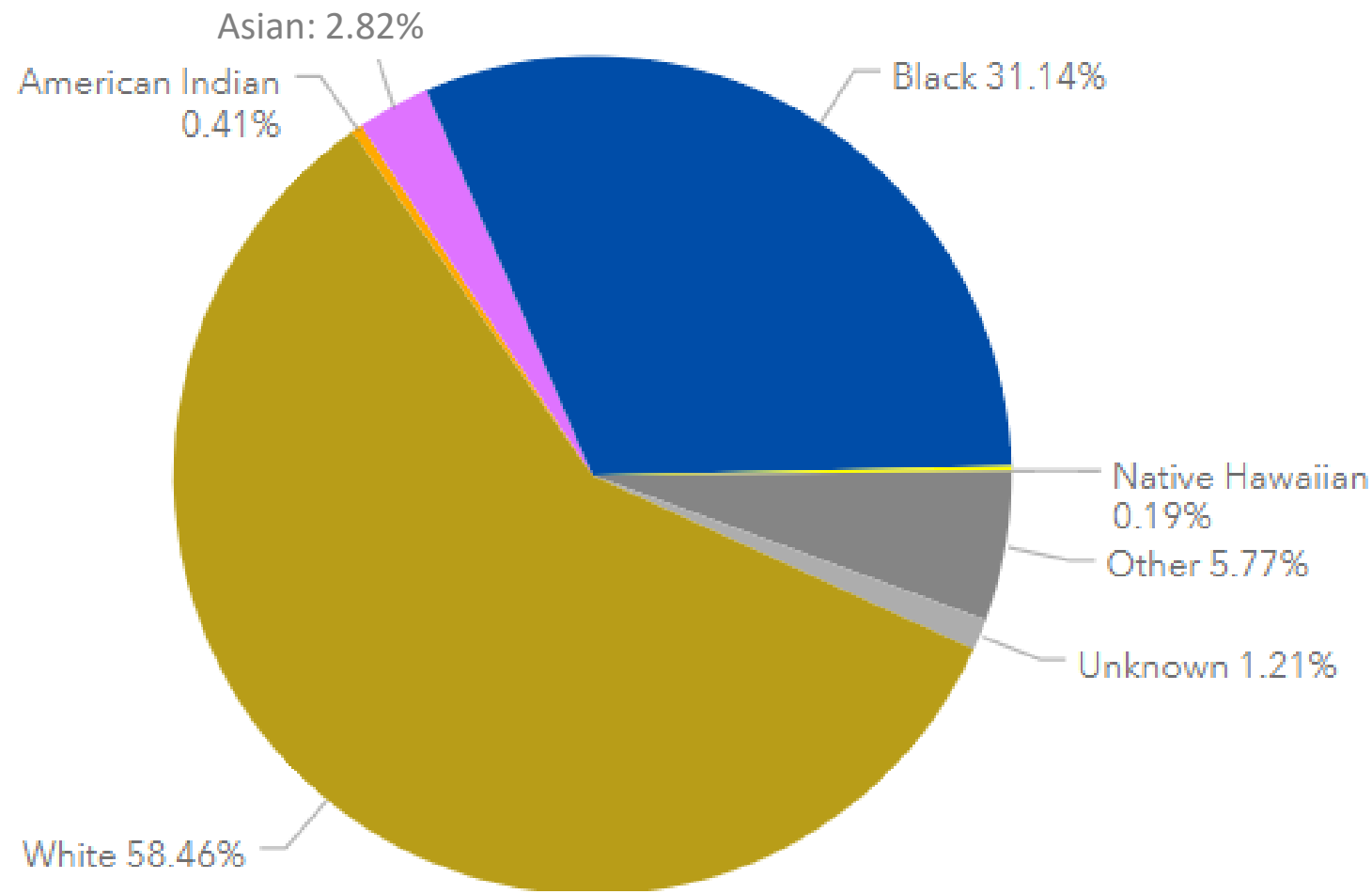
Vaccination status by age (1/4/22)



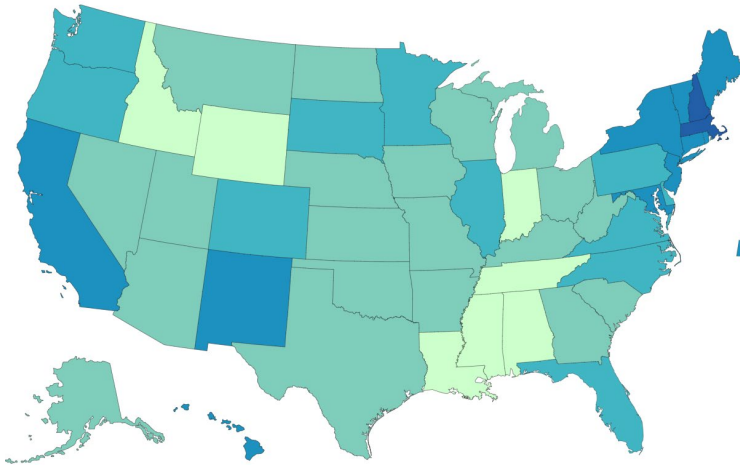
COVID-19 Vaccination Rate by Race (1/4/22)



Series completion and race (1/4/22)



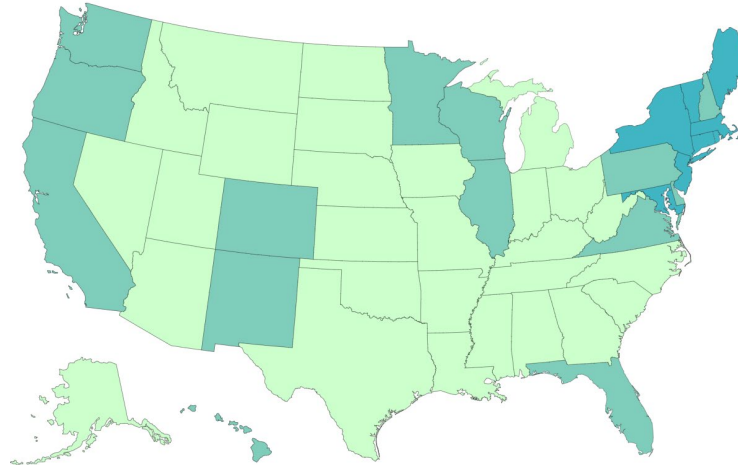
Louisiana rankings (1/4/22)



% of total population with at least 1 dose
LA ranks 47 of 50

Florida: 74.5%
Texas: 66.8%
Alabama: 58.5%
Indiana: 57.9%
Louisiana: 57.4%
Wyoming: 55.9%
Mississippi: 55.3%
Idaho: 52.1%

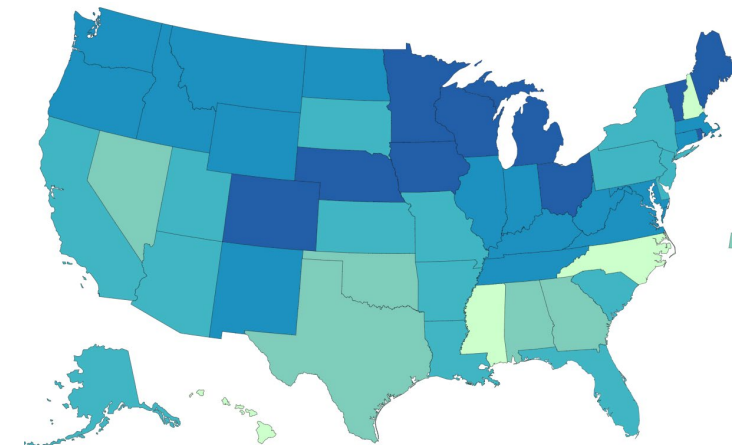
US average: 73.3%



% of total population completing series
LA ranks 46 of 50 (dropped 1 spot)

Florida: 63.4%
Texas: 57.0%
Louisiana: 50.3%
Mississippi: 48.1%
Alabama: 47.6%
Wyoming: 47.5%
Idaho: 46.2%

US average: 62.0%



% of fully vaccinated with booster
LA ranks 38 of 50 (dropped 6 spots)

Louisiana: 30.5%

US average: 33.4%

Reporting Vaccine Adverse Events

- Report all vaccine side effects and adverse events to the FDA/CDC Vaccine Adverse Event Reporting System (VAERS). The VAERS toll free number is 1-800-822-7967 or report online to <https://vaers.hhs.gov/reportevent.html>
- Immediately (24/7) report severe COVID-19 vaccine reactions requiring hospitalization to the Office of Public Health (OPH) at 1-800-256-2748.

VAERS

Vaccine Adverse Event Reporting System
www.vaers.hhs.gov

Q&A

Contact Email: la.immunization@la.gov