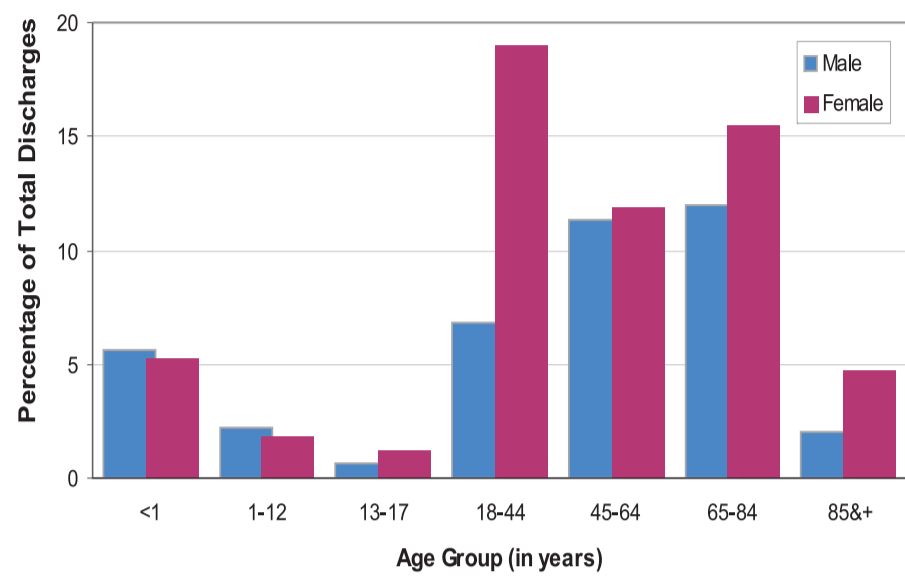




LOUISIANA HOSPITAL INPATIENT DISCHARGE DATA LAHIDD 2005

Percentage Discharges by Gender and Age Group, Louisiana 2005



No. of Discharges by Race and Gender, LA 2005

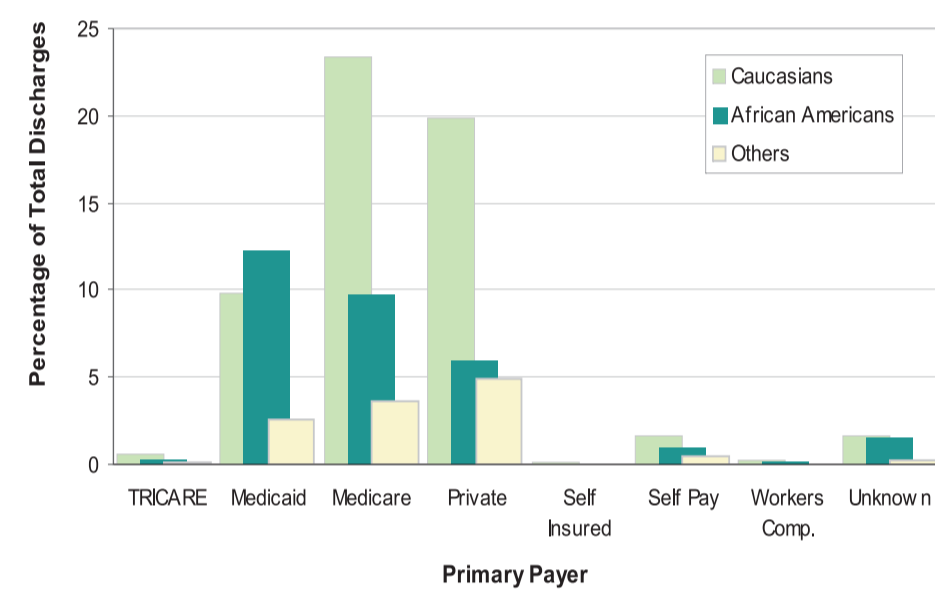
Race	Total	Female	Male	Unknown
African American/Black	173,013	105,739	67,273	1
Asian or Pacific Islander	3,076	1,930	1,146	0
Caucasian/White	323,680	189,791	133,881	8
Invalid	21	10	11	0
Missing	340	171	169	0
Native Am./ Alaskan Native	1,745	969	775	1
Other	9,598	5,488	4,110	0
Unknown	53,379	30,602	22,776	1
Total	564,852	334,700	230,141	11

No. of Discharges by Gender & Age Group (years), LA 2005

Gender	<1	1-12	13-17	18-44	45-64	65-84	85 &+
Female	29,460	10,287	6,834	107,300	67,155	87,224	26,439
Male	31,734	12,630	3,802	38,725	64,300	67,461	11,489
Unknown	7	0	0	1	1	1	1
Total	61,201	22,917	10,636	146,026	131,456	154,686	37,929

Missing values: Female = 1

Percentage Discharges by Primary Payer and Race, Louisiana 2005



Hospital Discharges by Primary Payers, LA 2005

Primary Payer	Disch	Rate	Females	Males	Charges
TRICARE	4,804	10.7	3,078	1,726	9,476
Medicaid	139,272	309.0	93,238	46,031	190,413
Medicare	206,863	458.9	117,452	89,408	531,087
Private	173,452	384.8	103,358	70,089	370,489
Self Insured	1,525	3.4	950	575	2,605
Self Pay	17,098	37.9	7,384	9,714	28,123
Workers Comp.	2,322	5.2	483	1,839	6,876
Unknown *	19,516	43.3	8,757	10,759	29,088
Total	564,852	1,253.2	334,700	230,141	1,168,157

* Includes Missing, Invalid and Other Unknown.

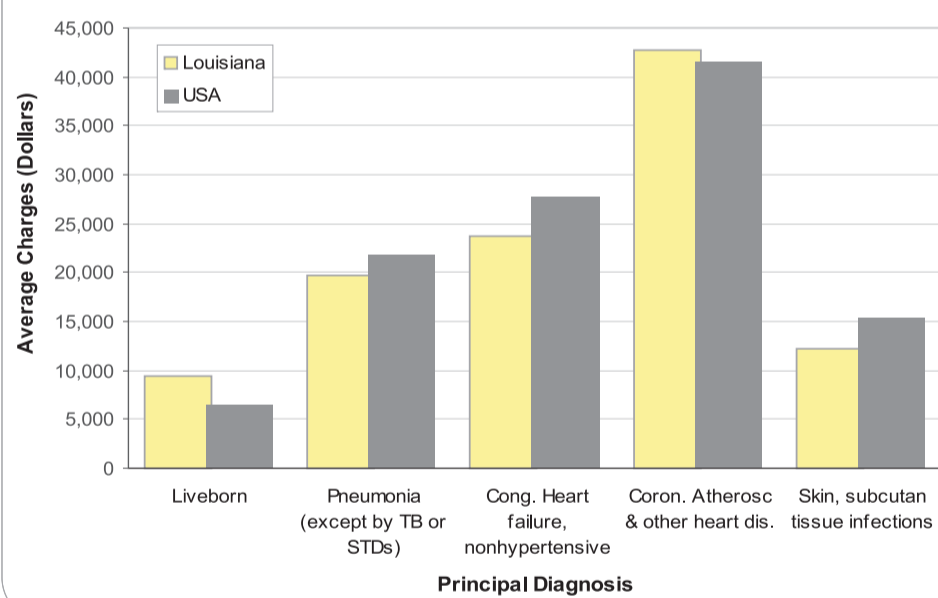
Disch=Total No. of Discharges; Rate per 10,000 LA population, U.S. Census Bureau estimate 2005; Charges=Total Charges in 10,000 dollars. Missing values: Medicaid=3, Medicare=3, Private=5.

Hospital Discharges by Admit Source, LA 2005

Admit Source	Disch	%Disch	Rate	Females	Males
Birth/Referrals/Others	320,307	56.7	710.6	201,782	118,518
Emergency Room	213,508	37.8	473.7	115,795	97,711
Transfer from other Hosp	18,791	3.3	41.7	10,311	8,479
Transfer from other Facility	4,918	0.9	10.9	2,895	2,023
Unknown	7,328	1.3	16.3	3,917	3,410
Total	564,852	100.0	1,253.2	334,700	230,141

Disch=Total No. of Discharges; %Disch=% of Discharges; Rate per 10,000 LA Population, U.S. Census Bureau estimate 2005; Missing values: Birth/Referrals/Others=7, Emergency Room=2, Transfer from other Hospital=1, Unknown=1, Note: There were 140 licensed Louisiana Hospitals that reported data for 2005 and the total number of hospital discharges was 564,852 after data deputation.

Average Charges for Top 5 Principal Diagnosis, 2005



Top 15 Principal Diagnoses by Discharges, LA 2005

Principal Diagnosis	Disch	Rate	LOS	Avg. \$
Liveborn	48,483	107.6	4.2	9,392
Pneumonia (except by TB or STDs)	22,726	50.4	5.7	19,661
Cong. Heart failure, nonhypertensive	21,268	47.2	5.3	23,799
Coron. Atherosclerotic & other heart dis.	19,132	42.4	3.4	42,697
Skin, subcutaneous tissue infections	11,942	26.5	4.6	12,169
Nonspecific chest pain	11,532	25.6	2.0	11,195
Urinary tract infections	10,874	24.1	5.0	14,564
Affective disorders	10,781	23.9	8.3	11,709
Fluid and electrolyte disorders	10,615	23.6	3.5	9,634
COPD and bronchiectasis	10,600	23.5	5.1	17,399
Rehab care, prosthesis & devices	10,449	23.2	14.2	32,138
Other complications of birth, puerperium	9,947	22.1	2.9	8,756
Cardiac dysrhythmias	9,795	21.7	3.4	22,131
Other complications of pregnancy	9,354	20.8	2.5	7,159
Septicemia (except in labor)	8,701	19.3	8.5	35,271

Disch=Total No. of Discharges; Rate per 10,000 LA population, U.S. Census Bureau estimate 2005; LOS= Average Length of Stay in days; Avg. \$ = Average Charges in dollars; Total Discharges for 2005 = 564,852.

Top 15 Principal Procedures by Discharges, LA 2005

Principal Procedure	Disch	Rate	LOS	Avg. \$
Low Cervical Cesarean Section	18,864	41.9	3.6	11,563
Circumcision	14,048	31.2	3.2	5,349
Other Manually Assisted Delivery	13,280	29.5	2.4	7,120
Left Heart Cardiac Catheterization	8,548	19.0	3.4	25,452
Transfusion of Packed Cells	8,390	18.6	6.2	21,536
Prophylactic Vaccine Administration ⁺	7,151	15.9	2.7	2,887
Venous Catheterization	7,007	15.5	10.2	37,790
Esophagogastroduodenoscopy	6,969	15.5	5.6	21,656
PTCA*	6,948	15.4	2.8	47,456
Repair of Obstetric Laceration	6,438	14.3	2.3	6,747
Total Abdominal Hysterectomy	6,206	13.8	2.8	16,525
Hemodialysis	6,046	13.4	6.5	23,032
Total Knee Replacement	5,102	11.3	4.4	39,818
Episiotomy	4,580	10.2	2.3	6,540
Laparoscopic Cholecystectomy	4,258	9.4	4.5	27,885

⁺ Against Other Diseases Including Anthrax.

* PTCA= Percutaneous Transluminal Coronary Angioplasty.

Disch=Total No. of Discharges; Rate per 10,000 LA population, U.S. Census Bureau estimate 2005; LOS=Average Length of Stay in days; Avg. \$ = Average Charges in dollars.

Designed, Prepared, Printed, Published & Distributed by LAHIDD Project, February 2008

Rafael A. Jarpa, MS, Sukhjeet S. Ahuja, MD, MPH, Erum Bhutto, MD, MPH

DEPARTMENT OF HEALTH AND HOSPITALS
OFFICE OF PUBLIC HEALTH
STATE CENTER FOR HEALTH STATISTICS

For more details, please contact: LAHIDD@dhhs.la.gov