



Louisiana

LAHIDD **Report** **2005**

Department of
Health and Hospitals

Office of
Public Health

State Center
for Health Statistics

State Health Care
Data Clearinghouse

**Hospital
Inpatient
Discharge
Data**

Louisiana Hospital Inpatient Discharge Database (LAHIDD)

Annual Report 2005

**As mandated by Louisiana Revised Statutes
40:1300.111 through 40:1300.113**

Bobby Jindal
Governor

Alan Levine
Secretary, Department of Health and Hospitals



OFFICE OF THE ASSISTANT SECRETARY
1201 CAPITOL ACCESS ROAD • P.O. BOX 3214 • BATON ROUGE, LOUISIANA 70821-0629
PHONE #: 225/342-8093 • FAX #: 225/342-8098
"AN EQUAL OPPORTUNITY EMPLOYER"

2005 LAHIDD Report
Louisiana Department of Health and Hospitals
Office of Public Health

Sybil M. Richard, RPh, MHA, Esq.
Deputy Secretary

M. Rony Francois, MD, MSPH, PhD
Assistant Secretary

Darlene W. Smith, BA
Center Director and State Registrar
Center for Records and Statistics

Devin George, MPPA
Deputy State Registrar

Robert Starszak, MS, MPH
Manager, State Center for Health Statistics

Editors

State Health Care Data Clearinghouse

Rafael A. Jarpa, MSc
Public Health Epidemiologist Supervisor

Sukhjeet S. Ahuja, MD, MPH
Public Health Epidemiologist

Erum Bhutto, MD, MPH
Public Health Epidemiologist

With the assistance of:

Carolina Monjarres, BS
Jeremy Mott, BS
Joan Borstell, MS
Iqbal Bhuiyan, MD, MPH
Ya-Hui Hseuh, MSPH
Shenkang Yu, MS
Suresh N. Belame, MD, MPH
Shamim Akhter, MD, MPH

Cover Design

Monica Byrne
Auxiliary Enterprises, Graphic Solutions
Louisiana State University, Health Sciences Center

*This report is the result of contributions from data received from Louisiana Hospitals.
The Louisiana State Center for Health Statistics would like to acknowledge their efforts
and extend thanks to all who assisted in the publication of this document.*

A Publication of the
State Health Care Data Clearinghouse
1450 L & A Road
Metairie, LA 70001
(504) 219-4515
Website: www.oph.dhh.state.la.us



State of Louisiana
Department of Health and Hospitals
Office of Public Health

July 16, 2009

Dear Citizens of Louisiana:

The Louisiana Department of Health & Hospitals, Office of Public Health is pleased to present the *2005 Louisiana Hospital Inpatient Discharge Database (LAHIDD) Report*. LAHIDD is Louisiana's only comprehensive population-based storehouse for hospital-inpatient data.

In this report, you will discover a unique source of data which describes hospital discharge trends and identifies at-risk populations within the State of Louisiana. It contains information on patient demographics, diagnoses, procedures, hospital charges, and costs. Data are presented at parish and state level, along with comparable U.S. morbidity statistics.

We expect that this report will prompt discussion on measures and policies that will improve the health status of Louisiana's residents. The *LAHIDD Report* is also available for review on the Office of Public Health's website at www.oph.dhh.louisiana.gov.

We gladly welcome your comments regarding this publication.

Sincerely,

A handwritten signature in cursive script that reads "M. Rony Francois MD, MSPH, PhD".

M. Rony Francois, MD, MSPH, PhD
Assistant Secretary

MRF:rj

Table of Contents 2005

Message from the Assistant Secretary

Table of Contents	i-ii
LAHIDD Background	iii-iv
State Summary 2005	1-3
Chart 1-2. Hospital Discharges by Age Group and Gender	4
Chart 3-4. Hospital Discharges by Race and Month	5
Table 1. Top 10 Principal Diagnoses at Discharge	6
Table 2a-2b. Top 10 Principal Diagnoses by Body System	7
Table 3a-3g. Top 5 Principal Diagnoses by Age Group.....	8-9
Chart 5-6. Hospital Discharges by Co-morbidities and Admit Source	10
Table 4. Top 10 Co-morbidities.....	11
Table 5. Top 10 Co-morbidities by Age Group.....	12
Table 6. Top 10 Principal Diagnoses Admitted through Emergency Room.....	13
Table 7. Top 10 Principal Diagnoses Admitted through Emergency Room by Age Group.....	14
Table 8. Top 10 Principal Procedures.....	15
Table 9. Top 10 Highest Average Charged Principal Diagnoses	16
Table 10. Top 10 Least Average Charged Principal Diagnoses.....	17
Table 11. Top 10 Principal Diagnoses with The Longest Hospital Stay	18
Chart 7-8. Hospital Discharges by Primary Payers, Non-Routine Discharges.....	19
Table 12. Top 10 Principal Diagnoses Charged to Medicare.....	20
Table 13. Top 10 Principal Diagnoses Charged to Private Insurers.....	21
Table 14. Top 10 Principal Diagnoses Charged to Medicaid.....	22
Table 15. Top 10 Principal Diagnoses of Patients who Leave Against Medical Advice.....	23
Table 16. Top 10 Principal Diagnoses of Patients Discharged to LTC & other Facilities.....	24
Table 17. Top 10 Principal Diagnoses of Discharges resulting in In-hospital Death	25
Table 18. Top 3 In-Hospital Death counts by Principal Diagnoses and Age Group	26
 State vs. U.S. Summary 2004.....	 29
Table 19a. Top 10 Principal Diagnoses Discharges, Louisiana vs. U.S. 2004.....	30
Table 19b. Top 10 Principal Diagnoses Discharges, Louisiana vs. U.S. 2005.....	31
Table 20a. Top 10 Principal Procedures Discharges, Louisiana vs. U.S. 2004.....	32
Table 20b. Top 10 Principal Procedures Discharges, Louisiana vs. U.S. 2005.....	33
Table 21a. Top 10 Charges for Principal Diagnoses, Louisiana vs. U.S. 2004.....	34
Table 21b. Top 10 Charges for Principal Diagnoses, Louisiana vs. U.S. 2005	35
Table 22a. Top 3 Principal Diagnoses with Corresponding Top 5 Principal Procedures, Louisiana vs. U.S. 2004.....	36
Table 22b. Top 3 Principal Diagnoses with Corresponding Top 5 Principal Procedures, Louisiana vs. U.S. 2005.....	37

Parish Summary 2005.....	41
Table 23. Hospital Inpatient Discharges by Parish.....	42
Table 24. Percent of Total Parish Discharges for Louisiana's Top 5 Principal Diagnoses	43
Table 25 Percent of Total Parish Discharges for Louisiana's Top 5 Principal Diagnoses resulting in In-Hospital Death	44
Table 26 Percentage and Average Charges for Source of Charges by Parish.....	45-46
Table 27. Percent of Louisiana's Top 5 Principal Diagnoses by Parish.....	47
Table 28. Percent of Louisiana's Top 5 Principal Diagnoses resulting in In-hospital Death by Parish.....	48
Table 29. Percent of Discharge Status by Year.....	49
Table 30. Number of Discharges by Principal Diagnoses and Health Region.....	50-52
Technical Notes.....	55
Glossary.....	57-59
UB-92 form sample.....	63

BACKGROUND

Act 622 of the 1997 Regular Session of the Louisiana Legislature enacted R.S. 40:1300.111 through 40:1300.113 and designated the STATE HEALTH CARE DATA CLEARINGHOUSE as the agency responsible for the collection of data related to the healthcare industry. This law charges the CLEARINGHOUSE with the responsibility for creating population-based healthcare data registries. These registries are expected to offer Louisiana and its healthcare providers their first opportunity to plan and operate systematic intervention strategies that address the antecedents of death.

In prioritizing the mandates of the CLEARINGHOUSE, the DEPARTMENT OF HEALTH AND HOSPITALS, OFFICE OF PUBLIC HEALTH (DHH/OPH) considered the various health-information data streams already in existence and the data-collection experiences of 36 other states. It was determined that Louisiana would benefit the most by focusing its initial data-collection efforts on hospital inpatient discharge data. As a result, the Louisiana Hospital Inpatient Discharge Database (LAHIDD) was designated as the registry containing inpatient discharge data submitted to DHH/OPH by hospitals within Louisiana.

History of LAHIDD

The rulemaking process enabling the development of LAHIDD, which involved the participation of public and private stakeholders, was completed in the fall of 1998. The following three milestones depict the legislative and regulatory history of the project:

- ❖ House Bill 1462 passed in May 1997; signed by the Governor in July as Act 622.
- ❖ Rules committee formed in DHH/OPH in November 1997
- ❖ Rules governing LAHIDD published in July 1998

An extensive survey of all hospitals in the state regarding their database systems and their discharge data submission capacities was conducted from late 1997 to early 1998. As a result of this survey, a comprehensive submittal guide was created and mailed out to hospitals in October 1998. In December 1998, hospitals began submitting data on discharges occurring between January and June 1998. To date, the State Center for Health Statistics has received fifteen quarterly data submissions from hospitals. These were submitted semi-annually during 1998, and quarterly thereafter, from January 1999 through March 2003.

Purpose of LAHIDD

LAHIDD underlies the commitment of DHH/OPH to the practice of sound public health by expanding the state's ability to carry out its three Core Public Health Functions:

- Assessment of community health status and resources;
- Assurance of availability and provision of necessary, high-quality, effective services; and
- Development of health policy that accurately addresses community needs.

The LAHIDD data will help DHH/OPH to accomplish its functions by:

- ❖ Enhancing Disease Surveillance and Reporting

LAHIDD provides a unique resource for the investigation of the progression of morbidity in the population and helps to identify at-risk populations within the community. LAHIDD data can be enriched through linkage to other DHH/OPH databases and can be further enhanced by information gathered by the state's other surveillance programs (e.g., Injury Research and Prevention, Behavioral Risk Factor Surveillance). Linking LAHIDD data to these other

population-based databases will enable the development of effective prevention policies targeted to at-risk populations. For DHH/OPH programs such as Tuberculosis and HIV, these data can be used to track patient treatment and to evaluate the completeness of programmatic surveillance.

❖ Assessing Healthcare Utilization

Many areas in Louisiana are experiencing rising healthcare costs and shortages of health professionals. These costs and shortages make it essential that patients, healthcare professionals, hospitals, and third-party payers have the necessary information to:

- evaluate health care needs; and
- identify the appropriate and efficient utilization of health services.

Ultimately, evaluation of needs and identification of appropriate and efficient utilization of health services requires an understanding of:

- the patterns and trends in the availability, utilization, and costs of health care services
- the underlying patterns of disease that necessitate these services.

Through LAHIDD, the STATE HEALTH CARE DATA CLEARINGHOUSE provides information needed to make these determinations. It is different from other sources of data in that LAHIDD is Louisiana's only comprehensive, population-based repository for hospital inpatient data while the DHH/OPH has been the state's repository for mortality data. LAHIDD contains information needed to measure and evaluate morbidity and hospital charges associated with inpatient stays in the state. It also contains information on the diagnoses of those treated, the procedures performed, and the hospital charges for those procedures.

The detailed information available in LAHIDD enables the state to identify specific geographic areas and populations in need of improved access to healthcare and health education. While maintaining LAHIDD confidentiality restrictions, identification of healthcare needs can be accomplished by tracking:

- utilization of hospital care for specific diagnoses and procedures in targeted populations and geographic areas; and
- hospital charges for services provided to targeted populations and in geographic areas.

Hospital Inpatient Discharge Data

Louisiana

LAHIDD Report



State Summary
2005

State Summary 2005

This section summarizes information collected from patients hospitalized at, and discharged from, 140 Louisiana licensed hospitals in 2005. Data were consolidated and presented by patient and disease characteristics. Health care facilities include acute care, long-term care, psychiatric, rehabilitation, and specialty hospitals.

Patients between 65 and 84 years of age accounted for most hospital stays in Louisiana in the year 2005 (Chart 1, pg. 4). Those aged 18-44 years old followed closely for the same period.

Hospital discharge data for 2005 show that women accounted for more discharges than men (Chart 2, pg. 4). In that year, 57.3% of total discharges were among white/Caucasian patients as compared to 57.9% in the year 2004. Similarly, the percentage for black/African-Americans went up to 30.6% in 2005 from 30.3% in 2004. **(Chart 3, pg. 5).** The total number of discharges for each month varies throughout each year; for 2005, the average monthly count of discharges was 47,071 **(Chart 4, pg. 5).**

The principal diagnoses in 2004-2005 are shown on Table 1, 2a-2b, and 3a-3g. The most common diagnosis for hospitalization during the 2004-2005 period was “livebirth” of an infant. In the year 2005, “pneumonia*” ranked second closely followed by “congestive heart failure, non-hypertensive” as principal diagnoses of hospital discharges. In 2004, previously, “congestive heart failure, non-hypertensive” was second, closely followed by “coronary atherosclerosis and other heart diseases”. **(Table 1, pg. 6).**

The leading diagnosis by body-system classification resulting in hospitalization was “diseases of the circulatory system”, which accounted for 18.6% of all discharges for the year 2005 as compared to 19.0% in 2004. “Complications of pregnancy, childbirth and the puerperium” ranked second with 11.0%, down from 11.1% in 2004, and “diseases of the respiratory system” ranked third with 10.8%, up from 9.5% in 2004 **(Table 2a-2b, pg. 7).**

For the year 2005, the principal diagnoses for discharges by age group (in years) are presented on Tables 3a-3g, pages 8-9.

Co-morbidities are coexisting medical problems that are not the main reason for a hospital stay. Discharges with co-morbidities are illustrated on Chart 5 and Tables 4-5, pages 10-12. In 2005 92.3% of all patients hospitalized had, at least, one co-morbidity (91.4% in 2004). Patients with four or more co-morbidities accounted for 58.1% of hospital stays in 2005 (56.6% in 2004). During the year 2005, “essential hypertension” was the most common co-morbidity at about 6.5%, followed by “coronary atherosclerosis and other heart disease” at 5.1% and “fluid and electrolyte disorders” at 3.6%. **Co-morbidities by age group are listed on Table 5, pg. 12.**

Hospital discharges by admit source during the period of 2004-2005 in Louisiana are shown on *Chart 6, pg. 10 and principal diagnoses admitted through Emergency Room - ER listed in Tables 6 and 7, pages 13-14.* In the year 2005, 56.7% of all admissions were for birth or routine procedure (55.6% in 2004); 37.8% were through the ER (38.2% in 2004). At least three of the top 10 diagnoses for patients admitted to the hospital through the ER were related to heart problems, and two of the top 10 diagnoses was related to respiratory problems. About 6.0% of all admissions to the hospital through the ER were due to “pneumonia**”.

Table 7, pg. 14 reports the top 10 principal diagnoses admitted through the emergency room by age group in the year 2005.

Table 8, pg. 15 shows the top 10 principal procedures in Louisiana for the years 2004-2005. Three of the top 10 principal procedures were related to pregnancy and childbirth and two of the top 10 procedures during this period were related to heart conditions. Lower cervical cesarean section ranked first in principal procedures 6.1% in 2005 (5.7% in 2004).

Principal diagnoses with the highest charges per stay and the longest average lengths of stay are illustrated on *Table 9, pg. 16 and Table 11, pg. 18.* In 2005, diagnoses related to “intrauterine hypoxia and birth asphyxia”, “short gestation, low birth weight and fetal growth retardation”, and “other central nervous system infection and poliomyelitis” were the top three most expensive diagnoses treated in Louisiana hospitals on a charges-per-stay basis (***Table 9, pg. 16***). Hospitals charged an average of \$131,076 per stay for “intrauterine hypoxia and birth asphyxia” and \$87,478 for “short gestation, low birth weight and fetal growth retardation” in 2005.

The least expensive diagnoses on a per-discharge basis and those with the shortest average hospital stays are depicted in *Table 10, pg. 17.* Among diagnoses with the lowest average charges during 2004-2005 there were, at least, six related to pregnancy and perinatal conditions.

The Medicare and Medicaid programs combined were billed for more than half of all hospital stays in Louisiana, at 61.3% in 2005 (60.7% in 2004) (*Chart 7, pg. 19*). Medicare was billed for 36.6% of all hospital stays in 2005 (37.4% in 2004). The three most prominent diagnoses for which Medicare was charged during 2005 were “congestive heart failure, non-hypertensive”, “pneumonia**” and “coronary atherosclerosis and other heart diseases” (***Table 12, pg. 20***). Private insurers were billed for 30.7% of all hospital stays in 2005 (30.4% in 2004). Three of the top ten diagnoses charged to private insurers were related to heart problems (***Table 13, pg. 21***). Medicaid was billed for 24.7% of all hospital stays in 2005 (23.4% in 2004) and mostly for diagnoses related to infancy and childbirth, which accounted for seven of the top 10 principal diagnoses (***Table 14, pg. 22***).

Non-Routine discharge status of patients is shown on *Chart 8 and Tables 15-18*.

In 2005, 73.6% of the discharges resulted in the patients returning home following completion of treatment in the hospitals (routine discharges). The remaining 26.4% were non-routine discharges (*Chart 8, pg. 19*). About 2.2% of hospital stays culminated in death, 1.8% were referred to a different short-term general hospital facility, 7.7% resulted in the patient being sent to a long-term care facility (*Chart 8, pg. 19*), and 0.8% involved patients who were released against medical advice. The principal diagnosis for this last group was most frequently “substance-related mental disorders” at 10.9% (*Table 15, pg. 23*).

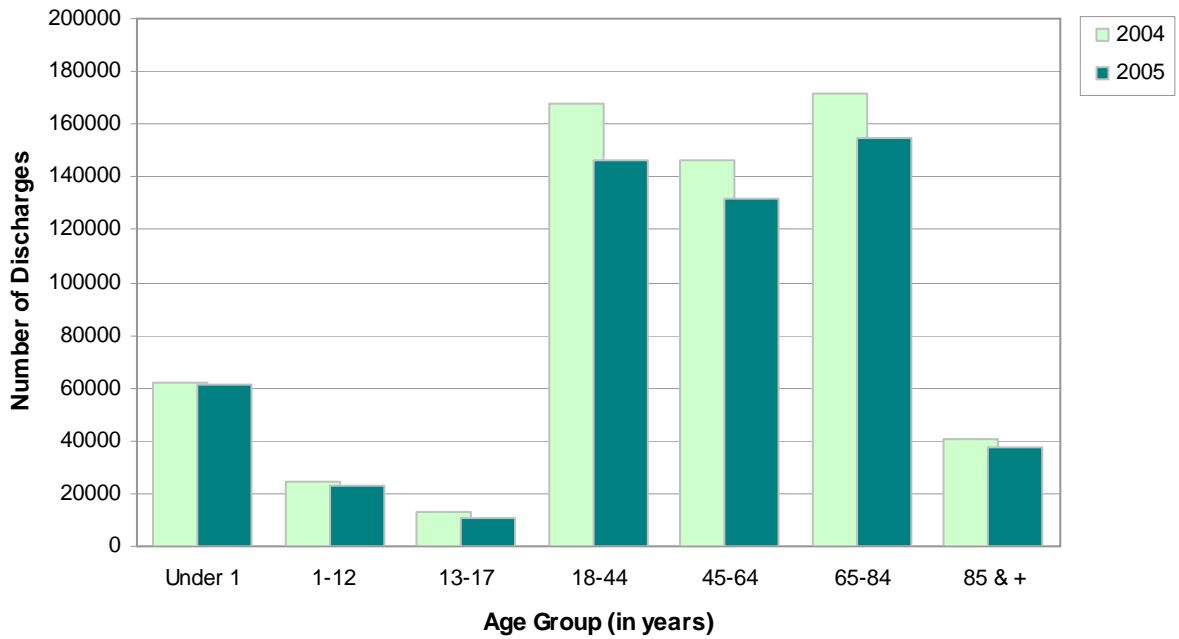
The top 3 principal diagnoses causing discharged patients to be referred to long-term care and other facilities were “pneumonia*”, “urinary tract infection”, and “congestive heart failure non-hypertensive”. The most common diagnoses that compromised functional ability were “acute cerebrovascular disease”, “fracture of neck of femur (hip)” and “rehabilitation care, fitting of prostheses, and adjustment of devices” (*Table 16, pg. 24*).

“Septicemia (except in labor)”, “respiratory failure, insufficiency, arrest (adult)”, and “pneumonia*” were the most common primary diagnoses for stays that resulted in In-hospital deaths. Other diagnoses resulting in In-hospital deaths were related to cardiac diseases, respiratory diseases, malignancies and renal failure (*Table 17, pg. 25*).

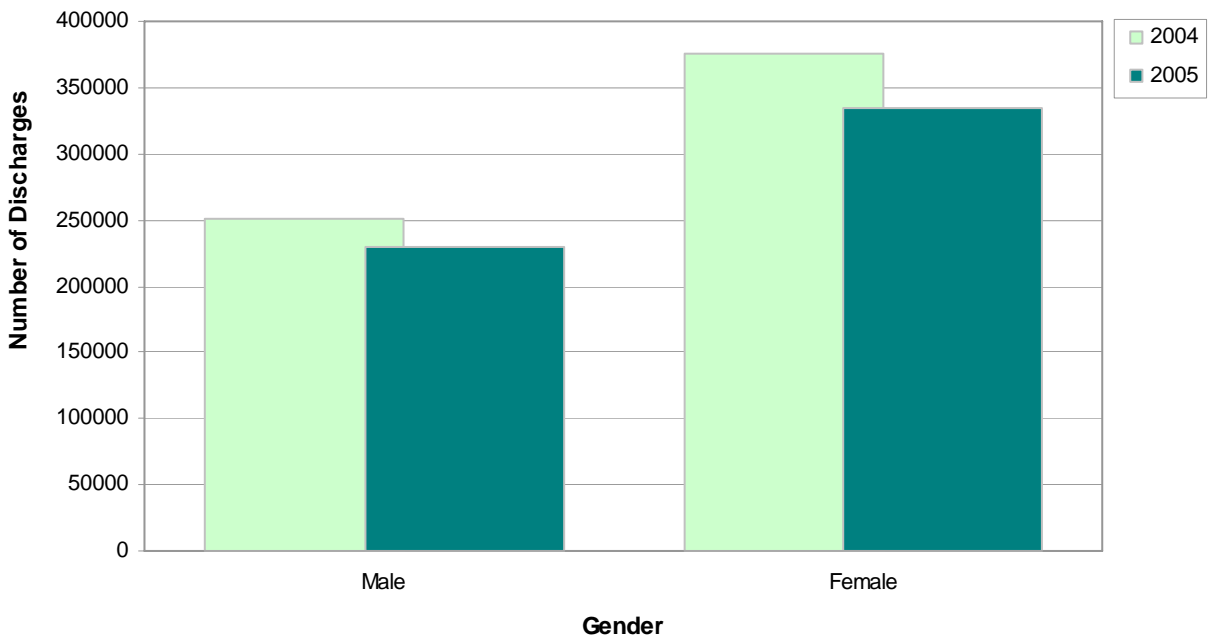
In-hospital death counts by principal diagnoses and age indicate that, for patients aged 45 years and older, the most common diagnoses were complications from “septicemia (except in labor)” and “congestive heart failure, non-hypertensive”. Other than a relatively large count of death during birth, the primary conditions for hospital stays resulting in In-hospital deaths for those under aged 45 were “HIV infection” followed by “intracranial injury” and “septicemia” (*Table 18, pg. 26*).

** Pneumonia except that caused by tuberculosis or sexually transmitted diseases.*

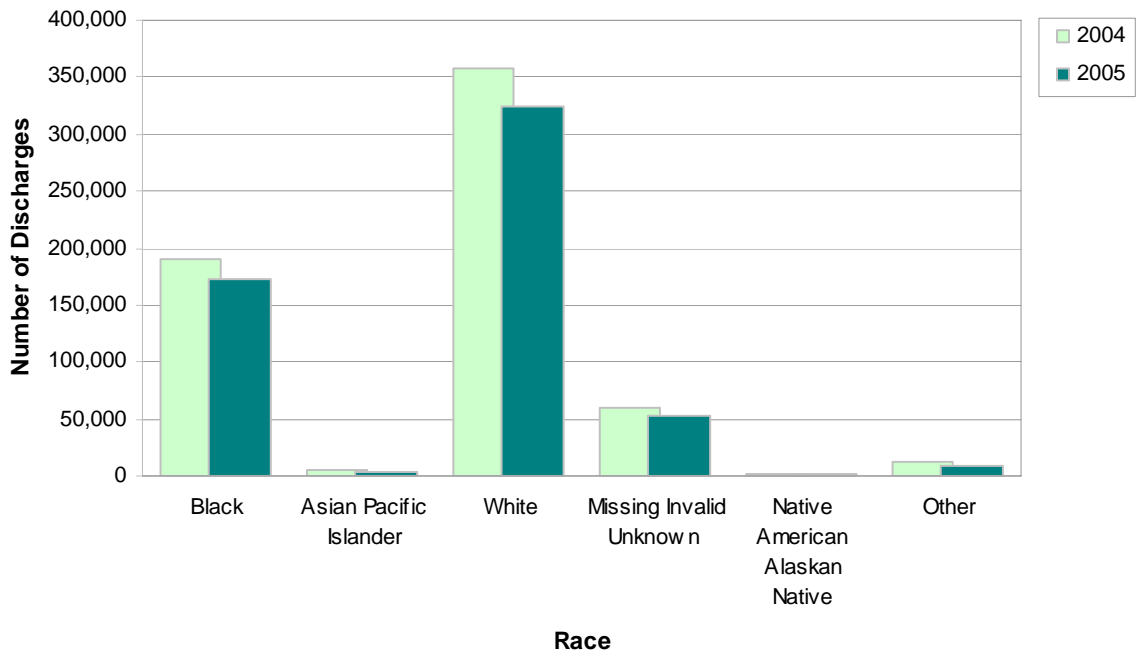
**Chart 1. Hospital Discharges by Age Group (in years)
Louisiana, 2004-2005**



**Chart 2. Hospital Discharges by Gender
Louisiana, 2004-2005**



**Chart 3. Number of Discharges by Race
Louisiana, 2004-2005**



**Chart 4. Number of Discharges by Month
Louisiana, 2004-2005**

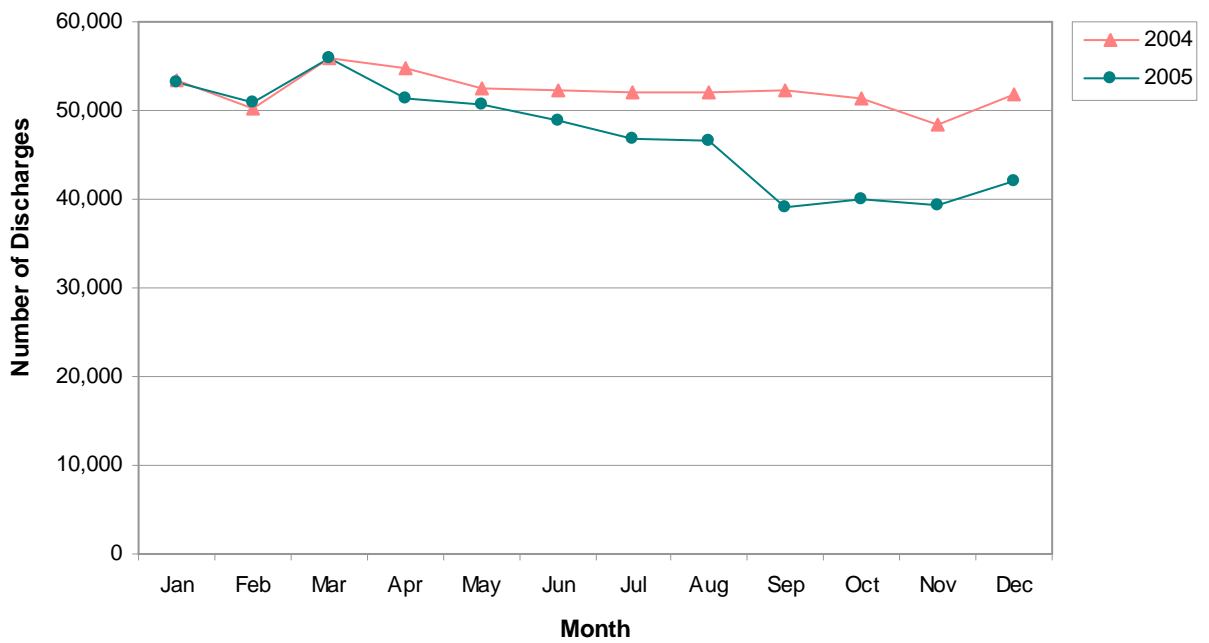


Table 1. Top 10 Principal Diagnoses at Discharge, Louisiana 2004-2005

Rank	Principal Diagnoses 2004	# of Discharges	% of all Disch.	Rate *	Principal Diagnoses 2005	# of Discharges	% of all Disch.	Rate *
1	Liveborn	48,797	7.8	108.3	Liveborn	48,483	8.6	107.6
2	Congestive heart failure, non-hypertensive	23,292	3.7	51.7	Pneumonia (except that caused by tuberculosis or STDs)	22,726	4.0	50.4
3	Coronary atherosclerosis and other heart disease	22,673	3.6	50.3	Congestive heart failure, non-hypertensive	21,268	3.8	47.2
4	Pneumonia (except that caused by tuberculosis or STDs)	21,619	3.4	48.0	Coronary atherosclerosis and other heart disease	19,132	3.4	42.4
5	Nonspecific chest pain	13,886	2.2	30.8	Skin and subcutaneous tissue infections	11,942	2.1	26.5
6	Rehabilitation care, fitting of prostheses, and adjustment of devices	13,685	2.2	30.4	Nonspecific chest pain	11,532	2.0	25.6
7	Fluid and electrolyte disorders	13,123	2.1	29.1	Urinary tract infections	10,874	1.9	24.1
8	Skin and subcutaneous tissue infections	12,876	2.1	28.6	Affective disorders	10,781	1.9	23.9
9	Affective disorders	12,577	2.0	27.9	Fluid and electrolyte disorders	10,615	1.9	23.6
10	Urinary tract infections	11,469	1.8	25.4	Chronic obstructive pulmonary disease and bronchiectasis	10,600	1.9	23.5
	Total of Top 10 Discharges	193,997	31.0	430.5	Total of Top 10 Discharges	177,953	31.5	394.8
	Total # of Discharges	626,700	100.0	1390.6	Total # of Discharges	564,852	100.0	1253.2

Note: Shadowed areas indicate rank unchanged for this two-year period

* Rate per 10,000 Louisiana Population, U.S. Census Bureau Estimates July 1, 2004 (4,506,685) and July 1, 2005 (4,507,331)

Table 2a. Top 10 Principal Diagnoses, Louisiana 2004

Rank	2004 Principal Diagnoses	# of Discharges	% of Discharges	Rate *
1	Diseases of the circulatory system	119,207	19.0	264.5
2	Complications of pregnancy, childbirth, and the puerperium	69,383	11.1	154.0
3	Diseases of the respiratory system	59,678	9.5	132.4
4	Diseases of the digestive system	54,318	8.7	120.5
5	Certain conditions originating in the perinatal period	50,219	8.0	111.4
6	Injury and poisoning	42,474	6.8	94.2
7	Mental disorders	39,409	6.3	87.4
8	Diseases of the genitourinary system	32,799	5.2	72.8
9	Endocrine, nutritional, and metabolic diseases and immunity	27,294	4.4	60.6
10	Neoplasms	26,751	4.3	59.4
	Total of Top 10 Discharges	521,532	83.2	1157.2
	Total number of Discharges	626,700	100.0	1390.6

Table 2b. Top 10 Principal Diagnoses, Louisiana 2005

Rank	2005 Principal Diagnoses	# of Discharges	% of Discharges	Rate *
1	Diseases of the circulatory system	105,266	18.6	233.5
2	Complications of pregnancy, childbirth, and the puerperium	61,867	11.0	137.3
3	Diseases of the respiratory system	61,044	10.8	135.4
4	Certain conditions originating in the perinatal period	50,094	8.9	111.1
5	Diseases of the digestive system	48,159	8.5	106.8
6	Injury and poisoning	37,541	6.6	83.3
7	Mental disorders	33,009	5.8	73.2
8	Diseases of the genitourinary system	30,146	5.3	66.9
9	Endocrine, nutritional, and metabolic diseases and immunity	22,634	4.0	50.2
10	Neoplasms	22,344	4.0	49.6
	Total of Top 10 Discharges	472,104	83.6	1047.4
	Total number of Discharges	564,852	100.0	1253.2

Note: Shaded areas indicate rank is unchanged for this two-year period. Grouping used in these tables is done by using the first two-digits of the multiple level CCS codes, called body system.

** Rate per 10,000 Louisiana population, U.S. Census Bureau Estimates July 1, 2004 (4,506,685) and July 1, 2005 (4,507,331)*

Table 3a. Top 5 Principal Diagnoses, Under 1 Year of Age, Louisiana 2005

Principal Diagnoses	Discharges: Age Group < 1
Liveborn	48,480
Acute bronchitis	2,626
Pneumonia (except that caused by TB or STDs)	1,174
Fluid and electrolyte disorders	824
Other perinatal conditions	779
Total of Top 5 Discharges	53,883
Total # of Discharges	61,201

Table 3b. Top 5 Principal Diagnoses, Ages 1-12, Louisiana 2005

Principal Diagnoses	Discharges: Age Group 1-12
Pneumonia (except that caused by TB or STDs)	3,083
Fluid and electrolyte disorders	2,450
Asthma	2,416
Skin and subcutaneous tissue infections	1,419
Intestinal infection	859
Total of Top 5 Discharges	10,227
Total # of Discharges	22,917

Table 3c. Top 5 Principal Diagnoses, Ages 13-17, Louisiana 2005

Principal Diagnoses	Discharges: Age Group 13-17
Affective disorders	706
Other complications of birth, puerperium affecting management of mother	524
Other complications of pregnancy	506
Other mental conditions	455
Skin and subcutaneous tissue infections	442
Total of Top 5 Discharges	2,633
Total # of Discharges	10,636

Table 3d. Top 5 Principal Diagnoses, Ages 18-44, Louisiana 2005

Principal Diagnoses	Discharges: Age Group 18-44
Other complications of birth, puerperium affecting management of mother	9,405
Other complications of pregnancy	8,846
Previous C-section	7,337
Trauma to perineum and vulva	5,718
Affective disorders	5,186
Total of Top 5 Discharges	36,492
Total # of Discharges	146,026

Continued

Table 3e. Top 5 Principal Diagnoses, Ages 45-64, Louisiana 2005

Principal Diagnoses	Discharges: Age Group 45-64
Coronary atherosclerosis and other heart disease	8,764
Nonspecific chest pain	5,857
Congestive heart failure, nonhypertensive	5,566
Pneumonia (except that caused by TB or STDs)	4,587
Skin and subcutaneous tissue infections	3,323
Total of Top 5 Discharges	28,097
Total # of Discharges	131,456

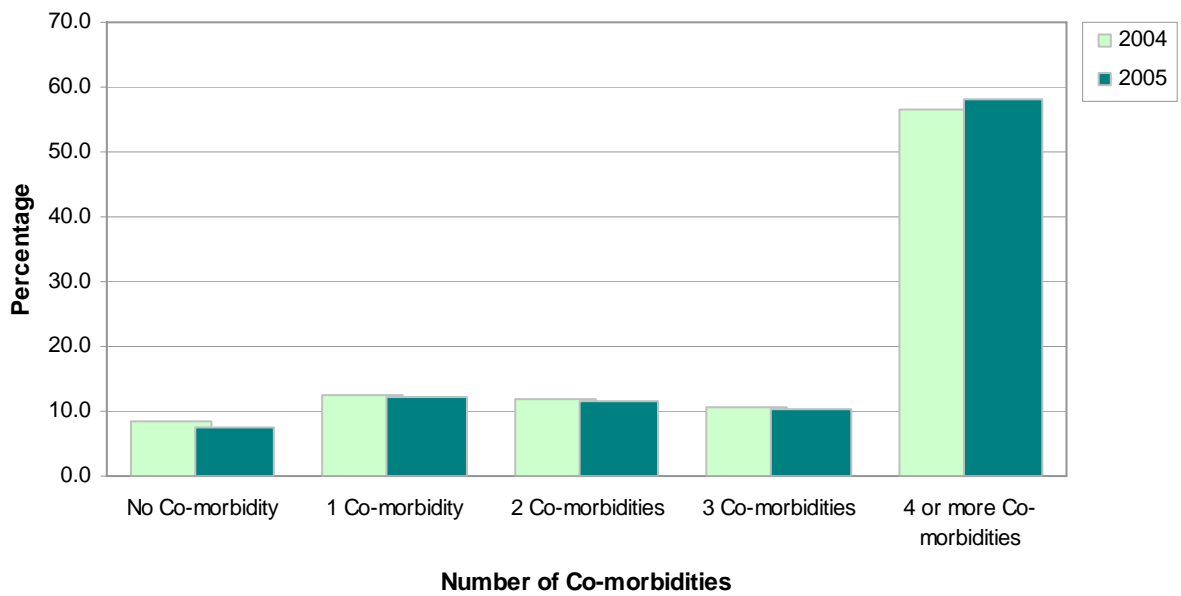
Table 3f. Top 5 Principal Diagnoses, Ages 65-84, Louisiana 2005

Principal Diagnoses	Discharges: Age Group 65-84
Congestive heart failure, nonhypertensive	11,035
Coronary atherosclerosis and other heart disease	8,666
Pneumonia (except that caused by TB or STDs)	8,467
Rehabilitation care, fitting of prostheses, and adjustment of devices	6,125
Chronic Obstructive Pulmonary Disease and bronchiectasis	5,841
Total of Top 5 Discharges	40,134
Total # of Discharges	154,686

Table 3g. Top 5 Principal Diagnoses, Ages 85 and up, Louisiana 2005

Principal Diagnoses	Discharges: Age Group 85 +
Congestive heart failure, nonhypertensive	3,553
Pneumonia (except that caused by TB or STDs)	3,207
Urinary tract infections	2,289
Septicemia (except in labor)	1,679
Rehabilitation care, fitting of prostheses, and adjustment of devices	1,478
Total of Top 5 Discharges	12,206
Total # of Discharges	37,929

**Chart 5. Percentage of Hospital Discharges by Co-morbidities
Louisiana, 2004-2005**



**Chart 6. Number of Hospital Discharges by Admit Source
Louisiana, 2004-2005**

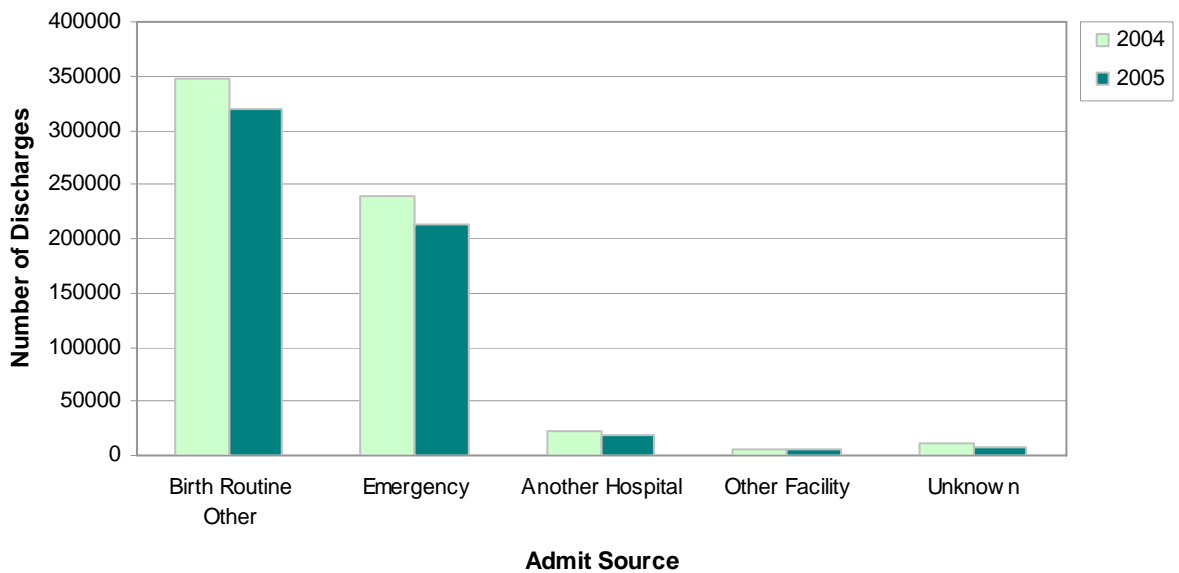


Table 4. Top 10 Co-morbidities Louisiana, 2004-2005

Rank	Co-Morbidities 2004	# of Co-Morbidities	%	Rate *	Co-Morbidities 2005	# of Co-Morbidities	%	Rate *
1	Essential hypertension	177,327	6.5	393.5	Essential hypertension	163,680	6.5	363.1
2	Coronary atherosclerosis and other heart disease	142,783	5.2	316.8	Coronary atherosclerosis and other heart disease	128,996	5.1	286.2
3	Fluid and electrolyte disorders	102,992	3.8	228.5	Fluid and electrolyte disorders	90,711	3.6	201.3
4	Diabetes mellitus without complication	80,077	2.9	177.7	Substance-related mental disorders	74,265	3.0	164.8
5	Substance-related mental disorders	73,878	2.7	163.9	Diabetes mellitus without complication	73,325	2.9	162.7
6	Cardiac dysrhythmias	66,723	2.4	148.1	Cardiac dysrhythmias	61,589	2.5	136.6
7	Deficiency and other anemia	66,420	2.4	147.4	Deficiency and other anemia	60,364	2.4	133.9
8	Congestive heart failure, non-hypertensive	61,632	2.3	136.8	Disorders of lipid metabolism	57,916	2.3	128.5
9	Disorders of lipid metabolism	60,911	2.2	135.2	Congestive heart failure, non-hypertensive	56,064	2.2	124.4
10	Normal pregnancy and/or delivery	55,681	2.0	123.6	**Chronic Obstructive Pulmonary Disease and bronchiectasis	52,617	2.1	116.7
	Total of Top 10 Co-Morbidities	888,424	32.6	1971.3	Total of Top 10 Co-Morbidities	819,527	32.6	1818.2
	Total # of Co-Morbidities	2,724,108	100.0	6044.6	Total # of Co-Morbidities	2,513,317	100.0	5576.1

Co-Morbidities are coexisting medical problems that are listed as other diagnoses and are not directly related to the principal diagnoses. Shaded areas indicate rank unchanged for this two-year period.

* Rates per 10,000 Louisiana Population, U.S. Census Bureau Estimates July 1, 2004 (4,506,685) and July 1, 2005 (4,507,331)

** Rank 10 originally occupied by Residual Codes, unclassified (54,420)

Table 5. Top 10 Co-Morbidities by Age Group Louisiana, 2005

Co-Morbidities	Age Group in Years						
	< 1 yr	1-12	13-17	18-44	45-64	65-84	85 &+
Other perinatal conditions	28,046						
Hemolytic jaundice and perinatal jaundice	14,009						
Short gestation, low birth weight, & fetal growth retardation	12,198						
Immunizations and screening for infectious disease	11,539						
Medical examination/evaluation	6,066						
Other congenital anomalies	3,155						
Cardiac and circulatory congenital anomalies	2,526						
Fluid and electrolyte disorders	1,925	3,687	782	11,981	22,733	36,783	12,820
Other male genital disorders	1,753						
Respiratory Distress Syndrome	1,648						
Asthma		2,597					
Other upper respiratory infections		2,183					
Bacterial infection, unspecified site		2,094	883	8,756			
Otitis media and related conditions		1,840					
Noninfectious gastroenteritis		1,616					
Other gastrointestinal disorders		1,134					
Allergic reactions		1,032					
Fever of unknown origin		1,010					
Residual codes, unclassified		906		12,371	18,764		
Normal pregnancy and/or delivery			2,141	47,024			
Other complications of birth, puerperium affecting mgmt			1,173	21,111			
Other complications of pregnancy			1,014	20,918			
Other mental conditions			934				
Substance-related mental disorders			696	29,174	28,252		
Anxiety, somatoform, dissociative, & personality disorders			632				
Preadult disorders			575				
Deficiency and other anemia			539	11,595	14,878	24,668	7,714
Essential hypertension				15,314	54,834	75,882	17,398
Other nutritional, endocrine, and metabolic disorders				7,753	14,199		
Coronary atherosclerosis and other heart disease					40,388	72,059	12,791
Diabetes mellitus without complication					25,487	35,642	5,980
Disorders of lipid metabolism					22,462	28,135	
Chronic obstructive pulmonary disease and bronchiectasis					14,447	29,712	5,980
Cardiac dysrhythmias						35,237	11,265
Congestive heart failure, non-hypertensive						30,555	10,524
Urinary tract infections						21,122	8,237
Senility and organic mental disorders							12,355
Total of Top 10 Co-morbidities	82,865	18,099	9,369	185,997	256,444	389,795	105,064
Total number of Co-morbidities	110,514	42,677	25,329	477,774	660,527	950,433	246,056

Note: The shadowed boxes show the highest frequency by age group

**Table 6. Top 10 Principal Diagnoses Admitted through Emergency Room (ER)
Louisiana, 2004-2005**

Rank	Principal Diagnoses 2004	# of Discharges	ER Adms. ⁺	Rate *	Principal Diagnoses 2005	# of Discharges	ER Adms. ⁺	Rate *
1	Congestive heart failure, non-hypertensive	14,854	6.2	33.0	Congestive heart failure, non-hypertensive	13,025	6.1	28.9
2	Pneumonia (except that caused by TB or STDs)	12,589	5.3	27.9	Pneumonia (except that caused by TB or STDs)	12,898	6.0	28.6
3	Nonspecific chest pain	9,901	4.1	22.0	Nonspecific chest pain	7,805	3.7	17.3
4	Coronary atherosclerosis and other heart disease	8,642	3.6	19.2	Coronary atherosclerosis and other heart disease	6,873	3.2	15.2
5	Fluid and electrolyte disorders	6,797	2.8	15.1	Urinary tract infections	6,127	2.9	13.6
6	Urinary tract infections	6,711	2.8	14.9	Chronic Obstructive Pulmonary Disease and bronchiectasis	6,084	2.8	13.5
7	Acute cerebrovascular disease	6,562	2.7	14.6	Skin and subcutaneous tissue infections	5,773	2.7	12.8
8	Skin and subcutaneous tissue infections	6,330	2.6	14.0	Acute cerebrovascular disease	5,750	2.7	12.8
9	Acute myocardial infarction	6,038	2.5	13.4	Septicemia (except in labor)	5,710	2.7	12.7
10	Cardiac dysrhythmias	5,458	2.3	12.1	Fluid and electrolyte disorders	5,329	2.5	11.8
	Total of Top 10 Discharges through Emergency Room	83,882	35.0	186.1	Total of Top 10 Discharges through Emergency Room	75,374	35.3	167.2
	Total # of Emergency Room Admissions	239,648	100.0	531.8	Total # of Emergency Room Admissions	213,508	100.0	473.7

Note: Shadowed areas indicate rank unchanged for this two-year period

+ Total # of Emergency Room Admissions

* Rate per 10,000 Louisiana Population, U.S. Census Bureau Estimates July 1, 2004 (4,506,685) and July 1, 2005 (4,507,331).

Table 7. Top 10 Principal Diagnoses Admitted Through Emergency Room (ER) by Age Group. Louisiana 2005

Principal Diagnosis	Age Group in Years						
	< 1 yr	1-12	13-17	18-44	45-64	65-84	85 &+
Acute bronchitis	938	286					
Pneumonia (except that caused by TB or STDs)	427	1,218	93	1,286	2,821	5,047	2,006
Fluid and electrolyte disorders	257	839					804
Other perinatal conditions	210						
Other upper respiratory infections	191						
Intestinal infection	188	427					
Fever of unknown origin	186						
Viral infection	162						
Skin and subcutaneous tissue infections	157	511	171	2,080	1,599		
Urinary tract infections	148						1,459
Noninfectious gastroenteritis		321					
Asthma		1,088	117				
Epilepsy, convulsions		372					
Other respiratory tract infectious		255					
Sickle cell anemia		237	148	1,295			
Appendicitis and other appendiceal conditions			238	943			
Affective disorders			187	1,661			
Fracture of lower limb			122				
Diabetes mellitus with complications			116	1,509	1,440		
Other mental conditions			111				
Poisoning by other medications and drugs			103				
Nonspecific chest pain				1,535	4,017	1,965	
Other complications of pregnancy				1,317			
Schizophrenia and related disorders				1,106			
Biliary tract disease				931			
Urinary tract infections						2,483	
Congestive heart failure, nonhypertensive					3,466	6,625	2,203
Coronary atherosclerosis and other heart disease					3,248	2,775	
Chronic obstructive pulmonary disease and bronchiectasis					1,941	3,357	
Acute myocardial infarction					1,901	2,134	592
Acute cerebrovascular disease					1,771	2,820	818
Cardiac dysrhythmias					1,307	2,591	647
Septicemia (except in labor)						2,695	1,161
Fracture of neck of femur (hip)							838
Aspiration pneumonitis, food/vomitus							540
Total of Top 10 ER Admissions	2,864	5,554	1,406	13,663	23,511	32,492	11,068
Total Number of ER Admissions	4,359	9,316	3,575	44,377	59,772	71,041	21,067

Note: The shadowed boxes show the highest frequency by age group

Table 8. Top 10 Principal Procedures Louisiana, 2004-2005

Rank	Principal Procedures 2004	# of Discharges	% of Disch. ⁺	Rate [*]	Principal Procedures 2005	# of Discharges	% of Disch. ⁺	Rate [*]
1	Low Cervical Cesarean Section	20,151	5.7	44.7	Low Cervical Cesarean Section	18,864	6.1	41.9
2	Circumcision	16,370	4.6	36.3	Circumcision	14,048	4.6	31.2
3	Other Procedures to Assist Delivery	15,716	4.5	34.9	Other Procedures to Assist Delivery	13,280	4.3	29.5
4	Left Heart Cardiac Catheterization	10,760	3.1	23.9	Left Heart Cardiac Catheterization	8,548	2.8	19.0
5	Single Vessel Percutaneous Transluminal Coronary Angioplasty (PTCA)	10,407	3.0	23.1	Transfusion of Packed Cells	8,390	2.7	18.6
6	Transfusion of Packed Cells	8,789	2.5	19.5	Prophylactic administration of vaccine against other diseases including anthrax	7,151	2.3	15.9
7	Esophagogastroduodenoscopy with closed biopsy	7,792	2.2	17.3	Venous Catheterization, not classified elsewhere	7,007	2.3	15.5
8	Total Abdominal Hysterectomy	7,717	2.2	17.1	Esophagogastroduodenoscopy with closed biopsy	6,969	2.3	15.5
9	Venous Catheterization, not classified elsewhere	7,480	2.1	16.6	Single Vessel Percutaneous Transluminal Coronary Angioplasty (PTCA)	6,948	2.3	15.4
10	Repair of Current Obstetric Laceration including Pelvic Floor, Perineum and Vulva	6,762	1.9	15.0	Repair of Current Obstetric Laceration including Pelvic Floor, Perineum and Vulva	6,438	2.1	14.3
	Total of Top 10 Procedures	111,944	31.8	248.4	Total of Top 10 Procedures	97,643	31.7	216.6
	Total # of Discharges with Procedures	352,293	100.0	781.7	Total # of Discharges with Procedures	308,476	100.0	684.4

Note: Shaded areas indicate rank unchanged for this two-year period

⁺ Total # of Discharges with Procedures

^{*} Rate per 10,000 Louisiana Population, U.S. Census Bureau Estimates July 1, 2004 (4,506,685) and July 1, 2005 (4,507,331)

**Table 9. Top 10 Highest Average Charged Principal Diagnoses
Louisiana, 2004-2005**

Rank	Principal Diagnoses 2004	Avg* Charges	Avg** LOS	Principal Diagnoses 2005	Avg* Charges	Avg** LOS
1	Immunity disorders	\$171,024	20	Intrauterine hypoxia and birth asphyxia	\$131,076	23
2	Spinal cord injury	\$79,473	15	Short gestation, low birth weight, and fetal growth retardation	\$87,478	21
3	Leukemias	\$76,247	12	Other central nervous system infection and poliomyelitis	\$87,136	15
4	Heart valve disorders	\$75,808	8	Spinal cord injury	\$83,509	14
5	Respiratory distress syndrome	\$75,091	41	Heart valve disorders	\$83,418	8
6	Cardiac and circulatory congenital anomalies	\$74,992	8	Cardiac and circulatory congenital anomalies	\$80,597	9
7	Other central nervous system infection and poliomyelitis	\$74,307	14	Respiratory distress syndrome	\$78,157	25
8	Aortic, peripheral, and visceral artery aneurysms	\$68,162	7	Hodgkin's disease	\$77,790	12
9	Respiratory failure, insufficiency, arrest (adult)	\$65,415	14	Leukemias	\$74,176	12
10	Short gestation, low birth weight, and fetal growth retardation	\$57,431	18	Respiratory failure, insufficiency, arrest (adult)	\$64,720	12

* Average charges per stay (rounded to the nearest dollar)

** Average length of stay (LOS) in hospital (in days)

**Table 10. Top 10 Least Average Charged Principal Diagnoses
Louisiana, 2004-2005**

Rank	Principal Diagnoses 2004	Avg* charges	Avg** LOS	Principal Diagnoses 2005	Avg* charges	Avg** LOS
1	Intrauterine hypoxia and birth asphyxia	\$2,097	2	Hemolytic jaundice and perinatal jaundice	\$3,179	2
2	History of mental disorder, behavioral problems, observation & screening for mental condition	\$2,364	2	Medical examination/evaluation	\$3,647	2
3	Hemolytic jaundice and perinatal jaundice	\$3,104	2	Administrative/social admission	\$4,909	3
4	Birth trauma	\$3,765	1	Other screening for suspected conditions (not mental disorder or infections)	\$5,683	2
5	Medical examination/evaluation	\$3,964	2	Forceps delivery	\$6,044	2
6	Forceps delivery	\$6,294	2	Diabetes or abnormal glucose tolerance complicating pregnancy and childbirth	\$6,467	3
7	Diabetes or abnormal glucose tolerance complicating pregnancy and childbirth	\$6,311	3	Umbilical cord complication	\$6,508	2
8	Normal pregnancy and/or delivery	\$6,390	2	Trauma to perineum and vulva	\$6,633	2
9	Umbilical cord complication	\$6,400	2	Normal pregnancy and/or delivery	\$6,732	2
10	Acute and chronic tonsillitis	\$6,532	2	Allergic reactions	\$7,076	3

Note: Shadowed areas indicate rank unchanged for this two-year period

*Note: * Average charges per stay (rounded to the nearest dollar)*

*** Average length of stay in hospital (in days)*

**Table 11. Top 10 Principal Diagnoses with the Longest Average Hospital Stay
Louisiana, 2004-2005**

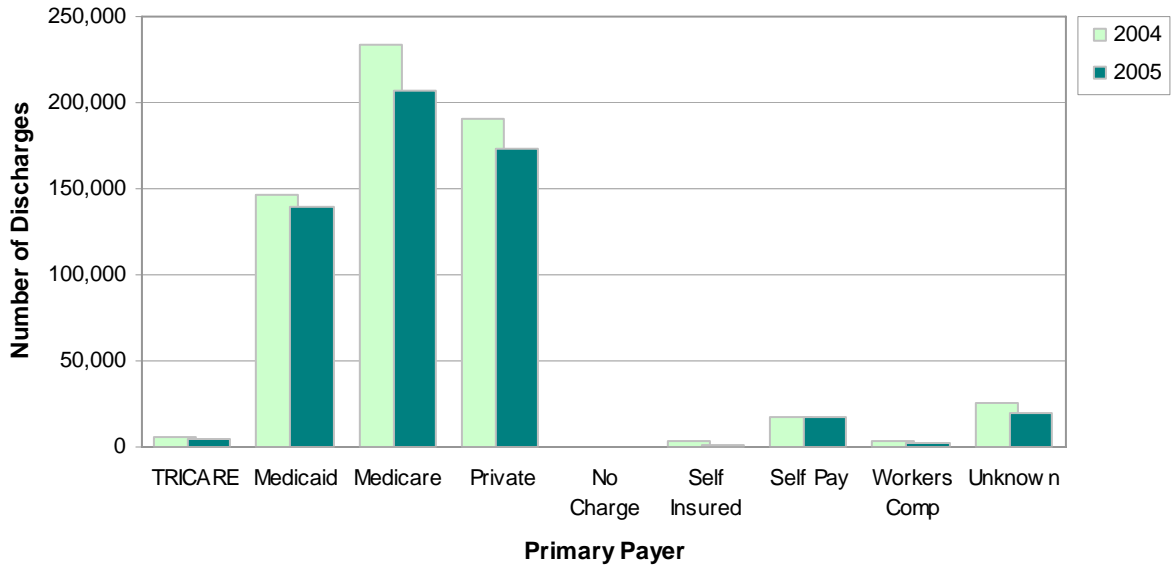
Rank	Principal Diagnoses 2004	Avg* Charges	Avg** LOS	Principal Diagnoses 2005	Avg* Charges	Avg** LOS
1	Respiratory distress syndrome	\$75,091	41	Respiratory distress syndrome	\$78,157	25
2	Immunity disorders	\$171,024	20	Intrauterine hypoxia and birth asphyxia	\$131,076	23
3	Preadult disorders	\$16,577	19	Short gestation, low birth weight, and fetal growth retardation	\$87,478	21
4	Short gestation, low birth weight, and fetal growth retardation	\$57,431	18	Other aftercare	\$46,239	18
5	Other aftercare	\$37,865	18	Chronic ulcer of skin	\$40,473	16
6	Late effects of cerebrovascular disease	\$31,915	16	Other central nervous system infection and poliomyelitis	\$87,136	15
7	Chronic ulcer of skin	\$41,677	16	Late effects of cerebrovascular disease	\$32,401	15
8	Spinal cord injury	\$79,473	15	Spinal cord injury	\$83,509	14
9	Schizophrenia and related disorders	\$15,697	15	Rehabilitation care, fitting of prostheses, and adjustment of devices	\$32,138	14
10	Tuberculosis	\$40,761	14	Tuberculosis	\$33,112	13

Note: Shaded areas indicate rank unchanged for this two-year period

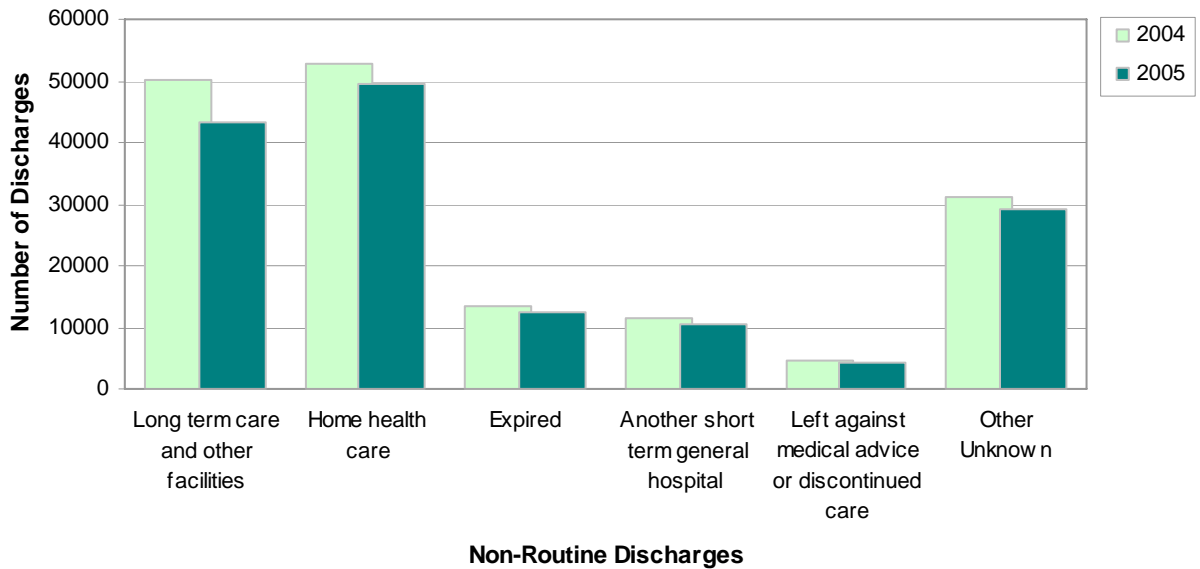
*Note: * Average charges per stay (rounded to the nearest dollar)*

***Average length of stay (LOS) in hospital (in days)*

**Chart 7. Number of Hospital Discharges by Primary Payer
Louisiana, 2004-2005**



**Chart 8. Number of Non-Routine Hospital Discharges
Louisiana, 2004-2005**



**Table 12. Top 10 Principal Diagnoses Charged to Medicare
Louisiana, 2004-2005**

Rank	Principal Diagnoses 2004	# of Discharges	% of all Disch. ⁺	Rate *	Principal Diagnoses 2005	# of Discharges	% of all Disch. ⁺	Rate *
1	Congestive heart failure, non-hypertensive	16,554	7.1	36.7	Congestive heart failure, non-hypertensive	14,741	7.1	32.7
2	Coronary atherosclerosis and other heart disease	11,889	5.1	26.4	Pneumonia (except that caused by TB or STDs)	12,018	5.8	26.7
3	Pneumonia (except that caused by TB or STDs)	11,838	5.1	26.3	Coronary atherosclerosis and other heart disease	9,687	4.7	21.5
4	Rehabilitation care, fitting of prostheses, and devices	9,664	4.1	21.4	Rehabilitation care, fitting of prostheses, and devices	7,097	3.4	15.7
5	Urinary tract infections	7,123	3.0	15.8	Chronic obstructive pulmonary disease and bronchiectasis	6,929	3.3	15.4
6	Cardiac dysrhythmias	7,024	3.0	15.6	Urinary tract infections	6,835	2.9	15.2
7	Chronic obstructive pulmonary disease and bronchiectasis	6,154	2.6	13.7	Cardiac dysrhythmias	6,221	3.0	13.8
8	Fluid and electrolyte disorders	6,087	2.6	13.5	Septicemia (except in labor)	6,025	2.9	13.4
9	Complication of device, implant or graft	5,944	2.5	13.2	Acute cerebrovascular disease	4,962	2.4	11.0
10	Acute cerebrovascular disease	5,782	2.5	12.8	Complication of device, implant or graft	4,919	2.4	10.9
	Total of Top 10 Discharges	88,059	37.6	195.4	Total of Top 10 Discharges	79,434	38.4	176.2
	Total # of Discharges paid by Medicare	234,142	100.0	519.5	Total # of Discharges paid by Medicare	206,863	100.0	458.9

Note: Shaded areas indicate rank unchanged for this two-year period

⁺ Total # of Discharges paid by Medicare

* Rate per 10,000 Louisiana Population, U.S. Census Bureau Estimates July 1, 2004 (4,506,685) and July 1, 2005 (4,507,331)

**Table 13. Top 10 Principal Diagnoses Charged to Private Insurers
Louisiana, 2004-2005**

Rank	Principal Diagnoses 2004	# of Discharges	% of all Disch.*	Rate *	Principal Diagnoses 2005	# of Discharges	% of all Disch.*	Rate *
1	Liveborn	19,691	10.3	43.7	Liveborn	18,181	10.5	40.3
2	Coronary atherosclerosis and other heart disease	7,499	3.9	16.6	Coronary atherosclerosis and other heart disease	6,719	3.9	14.9
3	Nonspecific chest pain	5,483	2.9	12.2	Pneumonia (except that caused by TB or STDs)	4,722	2.7	10.5
4	Spondylosis, intervertebral disc disorders, other back problems	4,370	2.3	9.7	Nonspecific chest pain	4,517	2.6	10.0
5	Pneumonia (except that caused by TB or STDs)	4,261	2.2	9.5	Skin and subcutaneous tissue infections	3,854	2.2	8.6
6	Other complications of birth, puerperium affecting management of mother	4,082	2.1	9.1	Other complications of birth, puerperium affecting management of mother	3,736	2.2	8.3
7	Skin and subcutaneous tissue infections	4,004	2.1	8.9	Congestive heart failure, non-hypertensive	3,580	2.1	7.9
8	Congestive heart failure, non-hypertensive	3,590	1.9	8.0	Spondylosis, intervertebral disc disorders, other back problems	3,269	1.9	7.3
9	Fluid and electrolyte disorders	3,308	1.7	7.3	Previous C-section	3,007	1.7	6.7
10	Previous C-section	3,265	1.7	7.2	Fluid and electrolyte disorders	2,771	1.6	6.1
	Total of Top 10 Discharges paid by Private Insurers	59,553	31.3	132.1	Total of Top 10 Discharges paid by Private Insurers	54,356	31.3	120.6
	Total # of Discharges paid by Private Insurers	190,408	100.0	422.5	Total # of Discharges paid by Private Insurers	173,452	100.0	384.8

Note: Shaded areas indicate rank unchanged for this two-year period

* Total # of Discharges paid by Private Insurers

* Rate per 10,000 Louisiana Population, U.S. Census Bureau Estimates July 1, 2004 (4,506,685) and July 1, 2005 (4,507,331)

**Table 14. Top 10 Principal Diagnoses Charged to Medicaid
Louisiana, 2004-2005**

Rank	Principal Diagnoses 2004	# of Discharges	% of all Disch. ⁺	Rate *	Principal Diagnoses 2005	# of Discharges	% of all Disch. ⁺	Rate *
1	Liveborn	26,168	17.9	58.1	Liveborn	27,784	19.9	61.6
2	Other complications of pregnancy	6,595	4.5	14.6	Other complications of pregnancy	6,262	4.5	13.9
3	Other complications of birth, puerperium affecting management of mother	6,257	4.3	13.9	Other complications of birth, puerperium affecting management of mother	5,628	4.0	12.5
4	Pneumonia (except that caused by TB or STDs)	4,463	3.0	9.9	Pneumonia (except that caused by TB or STDs)	4,880	3.5	10.8
5	Previous C-section	4,149	2.8	9.2	Previous C-section	4,032	2.9	8.9
6	Asthma	3,974	2.7	8.8	Asthma	3,139	2.3	7.0
7	Trauma to perineum and vulva	3,621	2.5	8.0	Normal pregnancy and/or delivery	3,137	2.3	7.0
8	Normal pregnancy and/or delivery	3,491	2.4	7.7	Trauma to perineum and vulva	3,025	2.2	6.7
9	Acute bronchitis	3,399	2.3	7.5	Fluid and electrolyte disorders	2,857	2.1	6.3
10	Fluid and electrolyte disorders	3,196	2.2	7.1	Early or threatened labor	2,801	2.0	6.2
	Total of Top 10 Discharges paid by Medicaid	65,313	44.6	144.9	Total of Top 10 Discharges paid by Medicaid	63,545	45.6	141.0
	Total # of Discharges paid by Medicaid	146,510	100.0	325.1	Total # of Discharges paid by Medicaid	139,272	100.0	309.0

Note: Shaded areas indicate rank unchanged for this two-year period

⁺ Total # of Discharges paid by Medicaid

* Rate per 10,000 Louisiana Population, U.S. Census Bureau Estimates July 1, 2004 (4,506,685) and July 1, 2005 (4,507,331)

**Table 15. Top 10 Principal Diagnoses of Patients who Leave Against Medical Advice
Louisiana, 2004-2005**

Rank	Principal Diagnoses 2004	# of Discharges	% of all Disch. ⁺	Rate *	Principal Diagnoses 2005	# of Discharges	% of all Disch. ⁺	Rate *
1	Substance-related mental disorders	619	13.5	1.4	Substance-related mental disorders	471	10.9	1.0
2	Nonspecific chest pain	202	4.4	0.4	Nonspecific chest pain	205	4.7	0.5
3	Congestive heart failure, non-hypertensive	167	3.7	0.4	Congestive heart failure, non-hypertensive	189	4.4	0.4
4	Skin and subcutaneous tissue infections	164	3.6	0.4	Skin and subcutaneous tissue infections	176	4.1	0.4
5	Alcohol-related mental disorders	148	3.2	0.3	Pneumonia (except that caused by TB or STDs)	166	3.8	0.4
6	Coronary atherosclerosis and other heart disease	144	3.1	0.3	Diabetes mellitus with complications	136	3.1	0.3
7	Diabetes mellitus with complications	130	2.8	0.3	Alcohol-related mental disorders	128	3.0	0.3
8	Pneumonia (except that caused by TB or STDs)	121	2.6	0.3	Coronary atherosclerosis and other heart disease	125	2.9	0.3
9	Affective disorders	112	2.4	0.2	Affective disorders	108	2.5	0.2
10	Other complications of pregnancy	99	2.2	0.2	COPD and bronchiectasis	90	2.1	0.2
	Total of Top 10 Leave Against Medical Advice	1,906	41.7	4.2	Total of Top 10 Leave Against Medical Advice	1,794	41.4	4.0
	Total # of Discharges Leave Against Medical Advice	4,574	100.0	10.1	Total # of Discharges Leave Against Medical Advice	4,335	100.0	9.6

Note: Shaded areas indicate rank unchanged for this two-year period

⁺ Total # of Discharges Leave Against Medical Advice

* Rate per 10,000 Louisiana Population, U.S. Census Bureau Estimates July 1, 2004 (4,506,685) and July 1, 2005 (4,507,331)

**Table 16. Top 10 Principal Diagnoses of Patients Discharged to LTC¹ and Other Facilities
Louisiana, 2004-2005**

Rank	Principal Diagnoses 2004	# of Discharges	% of all Disch. ⁺	Rate [*]	Principal Diagnoses 2005	# of Discharges	% of all Disch. ⁺	Rate [*]
1	Pneumonia (except that caused by TB or STDs)	3,300	6.6	7.3	Pneumonia (except that caused by TB or STDs)	3,091	7.2	6.9
2	Urinary tract infections	2,733	5.5	6.1	Urinary tract infections	2,728	6.3	6.1
3	Congestive heart failure, non-hypertensive	2,550	5.1	5.7	Congestive heart failure, non-hypertensive	2,187	5.1	4.9
4	Septicemia (except in labor)	2,056	4.1	4.6	Septicemia (except in labor)	2,172	5.0	4.8
5	Acute cerebrovascular disease	1,684	3.4	3.7	Rehabilitation care, fitting of prostheses, and adjustment of devices	1,420	3.3	3.2
6	Rehabilitation care, fitting of prostheses, and adjustment of devices	1,648	3.3	3.7	Acute cerebrovascular disease	1,377	3.2	3.1
7	Fluid and electrolyte disorders	1,581	3.2	3.5	Fluid and electrolyte disorders	1,211	2.8	2.7
8	Senility and organic mental disorders	1,545	3.1	3.4	Fracture of neck of femur (hip)	1,158	2.7	2.6
9	Fracture of neck of femur (hip)	1,379	2.8	3.1	Senility and organic mental disorders	1,150	2.7	2.6
10	Aspiration pneumonitis, food/vomitus	1,220	2.4	2.7	COPD and bronchiectasis	1,049	2.4	2.3
	Total of Top 10 Discharged to LTC¹ and Other Facilities	19,696	39.4	43.7	Total of Top 10 Discharged to LTC¹ and Other Facilities	17,543	40.6	38.9
	Total # of Discharges to LTC¹ and Other Facilities	50,000	100.0	110.9	Total # of Discharges to LTC¹ and Other Facilities	43,220	100.0	95.9

Note: Shadowed areas indicate rank unchanged for this two-year period

⁺ Total # of Discharges to LTC and Other Facilities

^{*} Rate per 10,000 Louisiana Population, U.S. Census Bureau Estimates July 1, 2004 (4,506,685) and July 1, 2005 (4,507,331)

LTC¹ stands for Long Term Care.

Other Facilities include skilled nursing facilities, intermediate care facilities, and another type (non-short term hospital) of institution.

**Table 17. Top 10 Principal Diagnoses of Discharges Resulting in In-Hospital Death
Louisiana, 2004-2005**

Rank	Principal Diagnoses 2004	# of Discharges	% of all Disch. ⁺	Rate *	Principal Diagnoses 2005	# of Discharges	% of all Disch. ⁺	Rate *
1	Septicemia (except in labor)	1,395	10.3	3.1	Septicemia (except in labor)	1,520	12.3	3.4
2	Acute cerebrovascular disease	942	7.0	2.1	Respiratory failure, insufficiency, arrest (adult)	897	7.3	2.0
3	Congestive heart failure, non-hypertensive	905	6.7	2.0	Pneumonia (except that caused by TB or STDs)	820	6.7	1.8
4	Pneumonia (except that caused by TB or STDs)	894	6.6	2.0	Acute cerebrovascular disease	800	6.5	1.8
5	Respiratory failure, insufficiency, arrest (adult)	794	5.9	1.8	Congestive heart failure, non-hypertensive	773	6.3	1.7
6	Acute myocardial infarction	711	5.3	1.6	Acute myocardial infarction	574	4.7	1.3
7	Aspiration pneumonitis, food/vomitus	410	3.0	0.9	Aspiration pneumonitis, food/vomitus	347	2.8	0.8
8	Secondary malignancies	379	2.8	0.8	Cancer of bronchus, lung	298	2.4	0.7
9	Cancer of bronchus, lung	362	2.7	0.8	Secondary malignancies	296	2.4	0.7
10	Liveborn	324	2.4	0.7	Acute and unspecified renal failure	290	2.4	0.6
	Total of Top 10 with In-Hospital Death	7,116	52.7	15.8	Total of Top 10 with In-Hospital Death	6,615	53.7	14.7
	Total # of Discharges with In-Hospital Death	13,499	100.0	30.0	Total # of Discharges with In-Hospital Death	12,328	100.0	27.4

Note: Shaded areas indicate rank unchanged for this two-year period

⁺ Total # of Discharges with In-Hospital Death

* Rate per 10,000 Louisiana Population, U.S. Census Bureau Estimates July 1, 2004 (4,506,685) and July 1, 2005 (4,507,331)

**Table 18. Top 3 In-hospital Death Counts by Principal Diagnoses and Age Group
Louisiana, 2005**

Principal Diagnoses	Discharges by Age Group in Years						
	< 1	1-12	13-17	18-44	45-64	65-84	85 & +
Liveborn	268						
Cardiac and circulatory congenital anomalies	13						
Other perinatal conditions	9						
Septicemia (except in labor)		6		55	290	753	412
Other injuries and conditions due to external causes		5					
Respiratory failure, insufficiency, arrest (adult)		5			203	508	
Intracranial injury		4	8	55			
Crushing injury or internal injury			5				
Residual codes, unclassified			4				
HIV infection				78			
Acute cerebrovascular disease				46	205		
Congestive heart failure, nonhypertensive						395	246
Pneumonia (except that caused by TB and STDs)							283
Total of Top 3 In-hospital Deaths	290	20	17	234	698	1,656	941
Total In-hospital Deaths in 2005	328	45	42	760	2,602	5,859	2,692

Note: The shadowed boxes show the highest frequency by age group

Hospital Inpatient Discharge Data

Louisiana

LAHIDD Report



Louisiana vs. U.S.
Summary
2005

Louisiana vs. United States 2005

This section summarizes information about hospital discharge data in Louisiana relative to the United States for 2004-2005.

Louisiana and the US* share five of the top ten principal diagnoses for hospitalization. In both 2004 and 2005, “liveborn”, “pneumonia**”, “coronary atherosclerosis” and “congestive heart failure, non-hypertensive” were the top four diagnoses in both the U.S. and Louisiana (*Table 19a-b, pages 30-31*).

At least five of the top ten procedures during hospital stays were related to pregnancy, childbirth and perinatal care in both Louisiana and the United States (*Table 20a-b, pages 32-33*).

Total amounts charged for principal diagnoses in both the US and Louisiana are shown in Tables 21a-b, pages 34-35.** For both 2004 and 2005, “coronary atherosclerosis”, “acute myocardial infarction”, “congestive heart failure, non-hypertensive”, “pneumonia**” and “liveborn”, topped the list of those diagnoses with the highest total charges.

The top three principal diagnoses, along with their corresponding top five procedures, are shown in Tables 22a-b, pages 36-37. Average hospital charges per admission, average lengths of stay per discharge, and average patient age per discharge are also listed.

* *Pneumonia except that caused by tuberculosis or sexually transmitted diseases.*

** *Not all states are included*

**Table 19a. Top 10 Principal Diagnoses Discharges
Louisiana vs. USA*, 2004**

Rank	Louisiana					USA*				
	Principal Diagnosis	Discharges	%	Avg** Charges	Avg*** LOS	Principal Diagnosis	Discharges	%	Avg** Charges	Avg*** LOS
1	Liveborn	48,797	7.8	\$8,751	4.1	Liveborn	4,249,339	11.0	\$6,595	3.3
2	Congestive heart failure, nonhypertensive	23,292	3.7	\$22,117	5.3	Pneumonia (except that caused by TB or STDs)	1,213,468	3.1	\$21,388	5.7
3	Coronary atherosclerosis and other heart disease	22,673	3.6	\$38,036	3.5	Coronary atherosclerosis and other heart disease	1,192,392	3.1	\$37,226	3.4
4	Pneumonia (except that caused by TB or STDs)	21,619	3.4	\$20,167	5.9	Congestive heart failure, nonhypertensive	1,104,365	2.9	\$25,850	5.5
5	Nonspecific chest pain	13,886	2.2	\$10,478	1.9	Nonspecific chest pain	845,707	2.2	\$11,228	1.9
6	Rehabilitation care, fitting of prostheses, and adjustment of devices	13,685	2.2	\$28,461	13.4	Trauma to vulva and perineum	785,100	2.0	\$6,681	2.0
7	Fluid and electrolyte disorders	13,123	2.1	\$9,435	3.5	Other maternal complications of birth and puerperium	758,356	2.0	\$9,598	2.7
8	Skin and subcutaneous tissue infections	12,876	2.1	\$11,847	4.6	Affective disorders	708,894	1.8	\$12,301	7.3
9	Affective disorders	12,577	2.0	\$10,936	8.5	Heart attack (acute myocardial infarction)	695,062	1.8	\$45,076	5.4
10	Urinary tract infections	11,469	1.8	\$14,006	4.8	Cardiac dysrhythmias	693,687	1.8	\$23,732	3.5

Note: Shadowed areas indicate the same rank in both Louisiana and USA

**Average charges per stay (rounded to the next dollar)

*** Average length of stay (LOS) in hospital (in days)

* Source: HCUPnet, Healthcare Cost and Utilization Project. Agency for Healthcare Research and Quality, Rockville, MD

<http://www.ahrq.gov/data/hcup/hcupnet.htm>

**Table 19b. Top 10 Principal Diagnoses Discharges
Louisiana vs. USA*, 2005**

Louisiana						USA*				
Rank	Principal Diagnosis	Discharges	%	Avg** Charges	Avg*** LOS	Principal Diagnosis	Discharges	%	Avg** Charges	Avg*** LOS
1	Liveborn	48,483	8.6	\$9,392	4.2	Liveborn	4,228,375	10.8	\$6,440	3.2
2	Pneumonia (except that caused by TB or STDs)	22,726	4.0	\$19,661	5.7	Pneumonia (except that caused by TB or STDs)	1,355,377	3.5	\$21,782	5.5
3	Congestive heart failure, nonhypertensive	21,268	3.8	\$23,799	5.3	Coronary atherosclerosis and other heart disease	1,109,648	2.8	\$41,507	3.3
4	Coronary atherosclerosis and other heart disease	19,132	3.4	\$42,697	3.4	Congestive heart failure, nonhypertensive	1,090,197	2.8	\$27,731	5.4
5	Skin and subcutaneous tissue infections	11,942	2.1	\$12,169	4.6	Nonspecific chest pain	824,694	2.1	\$12,153	1.8
6	Nonspecific chest pain	11,532	2.0	\$11,195	2.0	Trauma to vulva and perineum	784,481	2.0	\$7,049	2.1
7	Urinary tract infections	10,874	1.9	\$14,564	5.0	Other maternal complications of birth and puerperium	761,730	1.9	\$9,891	2.7
8	Affective disorders	10,781	1.9	\$11,709	8.3	Osteoarthritis	738,416	1.9	\$35,406	3.7
9	Fluid and electrolyte disorders	10,615	1.9	\$9,634	3.5	Cardiac dysrhythmias	696,551	1.8	\$24,782	3.5
10	COPD and bronchiectasis	10,600	1.9	\$17,399	5.1	Acute myocardial infarction	662,345	1.7	\$48,362	5.2

Note: Shaded areas indicate the same rank in both Louisiana and USA

**Average charges per stay (rounded to the next dollar)

*** Average length of stay (LOS) in hospital (in days)

* Source: HCUPnet, Healthcare Cost and Utilization Project. Agency for Healthcare Research and Quality, Rockville, MD

<http://www.ahrq.gov/data/hcup/hcupnet.htm>

**Table 20a. Top 10 Principal Procedures Discharges
Louisiana vs. USA*, 2004**

Louisiana				USA*		
Rank	Principal Procedures	Discharges	%	Principal Procedures	Discharges	%
1	Cesarean section	20,656	3.3	Other procedures to assist delivery	1,472,994	3.8
2	Circumcision	16,370	2.6	Cesarean section	1,268,420	3.3
3	Other procedures to assist delivery	16,279	2.6	Circumcision	1,102,667	2.9
4	Percutaneous transluminal coronary angioplasty (PTCA)	13,711	2.2	Upper gastrointestinal endoscopy, biopsy	731,239	1.9
5	Upper gastrointestinal endoscopy, biopsy	12,730	2.0	Percutaneous transluminal coronary angioplasty (PTCA)	720,927	1.9
6	Diagnostic cardiac catheterization, coronary arteriography	12,463	2.0	Repair of obstetric laceration	680,536	1.8
7	Hysterectomy, abdominal and vaginal	10,933	1.7	Respiratory intubation and mechanical ventilation	676,430	1.7
8	Blood transfusion	9,523	1.5	Diagnostic cardiac catheterization, coronary arteriography	638,946	1.7
9	Respiratory intubation and mechanical ventilation	8,726	1.4	Hysterectomy (removal of the uterus)	574,564	1.5
10	Other vascular catheterization, not heart	8,206	1.3	Blood transfusion	568,245	1.5

* Source: HCUPnet, Healthcare Cost and Utilization Project. Agency for Healthcare Research and Quality, Rockville, MD
<http://www.ahrq.gov/data/hcup/hcupnet.htm>

**Table 20b. Top 10 Principal Procedures Discharges
Louisiana vs. USA*, 2005**

Louisiana				USA*		
Rank	Principal Procedures	Discharges	% ⁺	Principal Procedures	Discharges	% ⁺
1	Low Cervical Cesarean Section	18,864	3.3	Other procedures to assist delivery	1,475,173	3.8
2	Circumcision	14,048	2.5	Cesarean section	1,301,770	3.3
3	Other Procedures to Assist Delivery	13,280	2.4	Circumcision	1,195,043	3.1
4	Left Heart Cardiac Catheterization	8,548	1.5	Percutaneous transluminal coronary angioplasty (PTCA)	749,577	1.9
5	Transfusion of Packed Cells	8,390	1.5	Upper gastrointestinal endoscopy, biopsy	706,437	1.8
6	Prophylactic administration of vaccine against other diseases including anthrax	7,151	1.3	Repair of current obstetric laceration	694,086	1.8
7	Venous Catheterization, not classified elsewhere	7,007	1.2	Respiratory intubation and mechanical ventilation	667,264	1.7
8	Esophagogastroduodenoscopy with closed biopsy	6,969	1.2	Blood transfusion	614,126	1.6
9	Single Vessel Percutaneous Transluminal Coronary Angioplasty (PTCA)	6,948	1.2	Diagnostic cardiac catheterization, coronary arteriography	603,047	1.5
10	Repair of Current Obstetric Laceration including Pelvic Floor, Perineum and Vulva	6,438	1.1	Prophylactic vaccinations and inoculations	570,771	1.5

+ Percentage of total discharges (564,952) for year 2005

* Source: HCUPnet, Healthcare Cost and Utilization Project. Agency for Healthcare Research and Quality, Rockville, MD
<http://www.ahrq.gov/data/hcup/hcupnet.htm>

Table 21a. Top 10 Charges for Principal Diagnosis
Louisiana vs. USA*, 2004

Louisiana					USA*			
Rank	Principal Diagnosis	Discharges	%	Aggregate charges	Principal Diagnosis	Discharges	%	Aggregate charges
1	Coronary atherosclerosis and other heart disease	22,673	3.6	\$862,393,486	Coronary atherosclerosis and other heart disease	1,192,392	3.1	\$44,466,040,190
2	Congestive heart failure, non-hypertensive	23,292	3.7	\$515,158,176	Heart attack (acute myocardial infarction)	695,062	1.8	\$31,290,628,878
3	Pneumonia (except that caused by TB or STDs)	21,619	3.4	\$435,991,126	Congestive heart failure, non-hypertensive	1,104,365	2.9	\$28,562,252,799
4	Acute myocardial infarction	9,159	1.5	\$430,436,585	Newborn infant	4,249,339	11.0	\$27,928,448,918
5	Liveborn	48,797	7.8	\$427,000,947	Pneumonia (except that caused by TB or STDs)	1,213,468	3.1	\$25,964,942,048
6	Rehabilitation care, fitting of prostheses, and adjustment of devices	13,685	2.2	\$389,482,494	Complication of device, implant or graft	601,183	1.6	\$22,286,553,910
7	Complication of device, implant or graft	9,984	1.6	\$376,825,563	Osteoarthritis (degenerative joint disease)	659,368	1.7	\$21,831,899,404
8	Septicemia (except in labor)	7,965	1.3	\$294,874,088	Septicemia (except in labor)	451,806	1.2	\$17,845,236,870
9	Spondylosis, intervertebral disc disorders, other back problems	9,151	1.5	\$265,308,412	Spondylosis, intervertebral disc disorders, other back problems	615,698	1.6	\$17,199,194,810
10	Osteoarthritis	6,921	1.1	\$256,268,995	Cardiac dysrhythmias (irregular heart beat)	693,687	1.8	\$16,487,444,661

Note: Shadowed areas indicate the same rank in both Louisiana and USA

* Source: HCUPnet, Healthcare Cost and Utilization Project. Agency for Healthcare Research and Quality, Rockville, MD
<http://www.ahrq.gov/data/hcup/hcupnet.htm>

**Table 21b. Top 10 Charges for Principal Diagnosis
Louisiana vs. USA*, 2005**

Louisiana					USA*			
Rank	Principal Diagnosis	Discharges	%	Aggregate charges	Principal Diagnosis	Discharges	%	Aggregate charges
1	Coronary atherosclerosis and other heart disease	19,132	3.4	\$816,871,480	Coronary atherosclerosis and other heart disease	1,109,648	2.8	\$45,985,411,746
2	Congestive heart failure, non-hypertensive	21,268	3.8	\$506,159,624	Heart attack (acute myocardial infarction)	662,345	1.7	\$31,946,460,663
3	Liveborn	48,483	8.6	\$455,366,644	Congestive heart failure, non-hypertensive	1,090,197	2.8	\$30,230,029,750
4	Pneumonia (except that caused by TB or STDs)	22,726	4.0	\$446,808,674	Pneumonia (except that caused by TB or STDs)	1,355,377	3.5	\$29,534,889,162
5	Acute myocardial infarction	7,640	1.4	\$384,298,748	Liveborn	4,228,375	10.8	\$27,309,151,935
6	Rehabilitation care, fitting of prostheses, and adjustment of devices	10,449	1.8	\$335,811,195	Osteoarthritis (degenerative joint disease)	738,416	1.9	\$26,157,293,572
7	Complication of device, implant or graft	8,339	1.5	\$323,228,381	Complication of device, implant or graft	615,920	1.6	\$25,290,835,732
8	Septicemia (except in labor)	8,701	1.5	\$306,893,536	Septicemia (except in labor)	537,717	1.4	\$24,801,344,716
9	Respiratory failure, insufficiency, arrest (adult)	4,275	0.8	\$276,677,680	Spondylosis, intervertebral disc disorders, other back problems	647,018	1.7	\$20,327,310,626
10	Osteoarthritis	6,788	1.2	\$260,572,551	Respiratory failure, insufficiency, arrest (adult)	336,350	0.9	\$19,722,568,695

Note: Shadowed areas indicate the same rank in both Louisiana and USA

* Source: HCUPnet, Healthcare Cost and Utilization Project. Agency for Healthcare Research and Quality, Rockville, MD
<http://www.ahrq.gov/data/hcup/hcupnet.htm>

**Table 22a. Top 3 Principal Diagnoses with Corresponding Top 5 Principal Procedures
Louisiana vs. USA*, 2004**

Louisiana					USA*			
	Principal Diagnoses & Top 5 Principal Procedures	# of Discharges	Avg* Charges	Avg** LOS	Principal Diagnoses & Top 5 Principal Procedures	# of Discharges	Avg* Charges	Avg** LOS
1	Liveborn	48,797	\$8,751	4.1	Liveborn	4,249,339	\$6,595	3.3
	Circumcision	16,286	\$3,399	2.8	Circumcision	1,091,604	\$3,409	2.6
	Prophylactic vaccinations and inoculations	6,324	\$2,651	2.7	Prophylactic vaccinations and inoculations	537,782	\$2,894	2.4
	Ophthalmologic and otologic diagnosis and treatment	1,664	\$3,933	2.7	Ophthalmologic and otologic diagnosis and treatment	181,861	\$3,397	2.5
	Respiratory intubation and mechanical ventilation	1,385	\$114,500	27.6	Respiratory intubation and mechanical ventilation	115,046	\$69,631	18.0
	Other therapeutic procedures	1,164	\$16,776	8.4	Other therapeutic procedures	98,418	\$19,831	7.7
2	Congestive heart failure, nonhypertensive	23,292	\$22,117	5.3	Pneumonia (except that caused by TB or STDs)	1,213,468	\$21,388	5.7
	Diagnostic catheterization, coronary arteriography	1,170	\$32,615	6.3	Respiratory intubation and mechanical ventilation	47,873	\$70,035	11.7
	Hemodialysis	888	\$18,022	4.1	Diagnostic bronchoscopy and biopsy of bronchus	37,751	\$39,062	9.4
	Insertion/replacement removal of cardiac pacemaker	677	\$79,660	6.0	Blood transfusion	31,824	\$25,955	7.1
	Other therapeutic procedures	636	\$22,638	5.3	Other therapeutic procedures	31,477	\$17,978	5.4
	Respiratory intubation and mechanical ventilation	555	\$43,550	8.0	Other vascular catheterization, not heart	28,132	\$34,985	9.3
3	Coronary atherosclerosis	22,673	\$38,036	3.5	Coronary atherosclerosis	1,192,392	\$37,226	3.4
	Percutaneous transluminal coronary angioplasty (PTCA)	8,615	\$41,221	2.1	Percutaneous coronary angioplasty (PTCA)	432,330	\$40,166	2.0
	Diagnostic cardiac catheterization, coronary arteriography	4,624	\$21,839	2.9	Diagnostic cardiac catheterization, coronary arteriography	219,712	\$21,183	2.8
	Coronary artery bypass graft (CABG)	3,463	\$80,601	8.0	Coronary artery bypass graft (CABG)	185,767	\$78,424	8.2
	Heart valve procedures	164	\$126,742	12.3	Insertion, revision, replacement, removal of cardiac pacemaker or cardioverter/defibrillator	15,190	\$100,176	4.7
	Insertion, revision, replacement, removal of cardiac pacemaker or cardioverted	163	\$86,897	5.4	Cardiac stress tests	8,870	\$15,023	2.6

*Source: HCUPnet, Healthcare Cost and Utilization Project. Agency for Healthcare Research and Quality, Rockville, <http://www.ahrq.gov/data/hcup/hcupnet.htm>

Note: Shadowed areas indicate the same rank in both Louisiana and USA

**Average charges per stay (rounded to the next dollar)

*** Average length of stay (LOS) in hospital (in days)

**Table 22b. Top 3 Principal Diagnoses with Corresponding Top 5 Principal Procedures
Louisiana vs. USA*, 2005**

Louisiana					USA*			
	Principal Diagnoses & Top 5 Principal Procedures	# of Discharges	Avg* Charges	Avg** LOS	Principal Diagnoses & Top 5 Principal Procedures	# of Discharges	Avg* Charges	Avg** LOS
1	Liveborn	48,483	\$9,392	4.1	Liveborn	4,228,375	\$6,440	3.2
	Circumcision	13,970	\$5,104	3.1	Circumcision	1,175,851	\$4,458	2.8
	Prophylactic vaccinations and inoculations	7,094	\$2,727	2.6	Prophylactic vaccinations and inoculations	538,410	\$3,006	2.4
	Other therapeutic procedures	1,281	\$16,859	8.0	Ophthalmologic and otologic diagnosis and treatment	237,455	\$3,223	2.4
	Respiratory intubation and mechanical ventilation	1,158	\$119,112	27.1	Other therapeutic procedures	88,878	\$19,569	7.2
	Ophthalmologic and otologic diagnosis and treatment	755	\$4,783	2.9	Respiratory intubation and mechanical ventilation	86,078	\$76,017	18.2
2	Pneumonia (except that caused by TB or STDs)	22,726	\$19,661	5.7	Pneumonia (except that caused by TB or STDs)	1,355,377	\$21,782	5.5
	Respiratory intubation and mechanical ventilation	648	\$70,901	11.4	Respiratory intubation and mechanical ventilation	43,762	\$74,822	11.6
	Diagnostic bronchoscopy and biopsy of bronchus	622	\$35,779	9.2	Diagnostic bronchoscopy and biopsy of bronchus	40,722	\$41,219	9.1
	Other therapeutic procedures	591	\$25,529	5.2	Other therapeutic procedures	35,166	\$19,623	5.6
	Blood transfusion	504	\$28,220	7.9	Blood transfusion	35,158	\$26,954	7.1
	Other vascular catheterization, not heart	495	\$39,960	10.7	Other vascular catheterization, not heart	31,768	\$38,436	9.4
3	Congestive heart failure, nonhypertensive	21,268	\$23,799	5.3	Coronary atherosclerosis	1,109,648	\$41,507	3.3
	Insertion/replacement removal of cardiac pacemaker	956	\$88,515	5.7	Percutaneous coronary angioplasty (PTCA)	448,712	\$42,999	1.9
	Diagnostic catheterization, coronary arteriography	896	\$34,100	5.0	Diagnostic cardiac catheterization, coronary arteriography	199,110	\$22,291	2.7
	Hemodialysis	794	\$21,424	4.7	Coronary artery bypass graft (CABG)	164,944	\$89,521	8.4
	Blood transfusion	522	\$28,217	6.4	Insertion, revision, replacement, removal of cardiac pacemaker or cardioverter/defibrillator	20,571	\$89,295	3.3
	Other therapeutic procedures	505	\$26,476	6.5	Cardiac stress tests	8,258	\$15,724	2.5

Note: Shadowed areas indicate the same rank in both Louisiana and USA

** Average charges per stay (rounded to the next dollar)

*** Average length of stay (LOS) in hospital (in days)

* Source: HCUPnet, Healthcare Cost and Utilization Project. Agency for Healthcare Research and Quality, Rockville, <http://www.ahrq.gov/data/hcup/hcupnet.htm>

Hospital Inpatient Discharge Data

Louisiana

LAHIDD Report



Parish
Summary
2005

Parish Summary

This section summarizes information about inpatient hospital discharge data by parish of patient residence for the year 2005. All parish percentages for principal diagnoses are derived from the total number of discharges for each parish.

Table 23, pg. 42 shows that the highest numbers of discharges in the year 2005 were from the following parishes: **Jefferson (50,697)**, **East Baton Rouge (49,474)**, **Orleans (45,874)**, **St. Tammany (29,243)** and **Lafayette (24,698)**.

Table 24, pg. 43 lists the percentage of discharges for Louisiana's top 5 principal diagnoses by parish.*

Table 25, pg. 44 illustrates percentages of parish discharges for top 5 principal diagnoses resulting in In-hospital death.*

Table 26, pages 45-46 shows percentages and average charges for each payer by parish. The payers considered for this table are as follows: Medicare, Medicaid, Private (Blue Cross, Blue Shield and all other HMOs), TRICARE (formerly called CHAMPUS), No Charge (Free, Charity, Special Research, and Teaching), Self Pay, Self Insured, Workers Compensation, and Other-Unknown-Missing.

Each parish percentage in the following tables is calculated with respect to the total of all the discharges for a particular diagnosis.

Table 27, pg. 47 illustrates the percentage of Louisiana's top five diagnoses by parish.

Table 28, pg. 48 shows the percentage of Louisiana's top five diagnoses resulting in In-hospital death by parish. Each parish percentage is derived as a total of all the discharges for the particular diagnosis resulting in an In-hospital death.

Table 29, pg. 49 presents the percentage of discharge by status.

Table 30, pgs. 50-52 shows the number of discharges by principal diagnoses and health region.

* *The highest values have been highlighted.*

**Table 23. Hospital Inpatient Discharges by Parish
Louisiana, 2005**

PARISH	# of Discharges	% of total Discharges
ACADIA	7,763	1.4
ALLEN	2,000	0.4
ASCENSION	10,477	1.9
ASSUMPTION	2,420	0.4
AVOYELLES	7,420	1.3
BEAUREGARD	1,239	0.2
BIENVILLE	1,666	0.3
BOSSIER	4,178	0.7
CADDO	13,507	2.4
CALCASIEU	19,946	3.5
CALDWELL	2,467	0.4
CAMERON	515	0.1
CATAHOULA	1,517	0.3
CLAIBORNE	1,210	0.2
CONCORDIA	1,630	0.3
DE SOTO	2,342	0.4
EAST BATON ROUGE	49,474	8.8
EAST CARROLL	1,183	0.2
EAST FELICIANA	3,218	0.6
EVANGELINE	7,843	1.4
FRANKLIN	3,623	0.6
GRANT	3,018	0.5
IBERIA	10,267	1.8
IBERVILLE	3,889	0.7
JACKSON	3,417	0.6
JEFFERSON	50,697	9.0
JEFFERSON DAVIS	5,284	0.9
LA SALLE	2,841	0.5
LAFAYETTE	24,698	4.4
LAFOURCHE	8,411	1.5
LINCOLN	4,832	0.9
LIVINGSTON	14,176	2.5
MADISON	1,391	0.2
MOREHOUSE	2,936	0.5
NATCHITOCHE	5,651	1.0
ORLEANS	45,874	8.1
OUACHITA	22,968	4.1
PLAQUEMINES	2,665	0.5
POINTE COUPEE	2,316	0.4
RAPIDES	20,632	3.7
RED RIVER	1,193	0.2
RICHLAND	3,832	0.7
SABINE	1,339	0.2
ST. BERNARD	8,985	1.6
ST. CHARLES	6,104	1.1
ST. HELENA	955	0.2
ST. JAMES	1,861	0.3
ST. JOHN	6,285	1.1
ST. LANDRY	16,630	2.9
ST. MARTIN	7,382	1.3
ST. MARY	6,578	1.2
ST. TAMMANY	29,243	5.2
TANGIPAHOA	18,537	3.3
TENSAS	1,743	0.3
TERREBONNE	9,931	1.8
UNION	3,484	0.6
VERMILION	8,085	1.4
VERNON	5,666	1.0
WASHINGTON	7,949	1.4
WEBSTER	5,606	1.0
WEST BATON ROUGE	2,727	0.5
WEST CARROLL	1,254	0.2
WEST FELICIANA	1,240	0.2
WINN	3,055	0.5
MISSING	7,509	1.3
OUT OF STATE	16,078	2.8
ALL DISCHARGES	564,852	100.0

Table 24. Percent of Total Parish Discharges for Louisiana's Top 5 Diagnoses, 2005

PARISH	Liveborn	Pneumonia (except that caused by TB or STD)	Congestive heart failure, nonhypertensive	Coronary atherosclerosis and other heart disease	Skin and subcutaneo us tissue infections	Total # of Discharges by Parish
ACADIA	7.6	6.3	3.5	2.7	2.4	7,763
ALLEN	6.2	7.3	3.6	2.7	2.4	2,000
ASCENSION	15.3	2.7	2.6	1.9	2.1	10,477
ASSUMPTION	8.2	5.4	4.1	1.9	1.6	2,420
AVOUELLES	7.5	4.8	3.9	4.3	2.2	7,420
BEAUREGARD	7.6	5.9	4.2	3.4	2.6	1,239
BIENVILLE	4.7	6.4	4.6	3.5	2.9	1,666
BOSSIER	6.2	3.5	3.0	1.4	1.8	4,178
CADDO	3.7	4.5	4.0	2.1	2.1	13,507
CALCASIEU	8.0	4.2	3.5	2.5	2.4	19,946
CALDWELL	4.7	5.9	5.6	3.2	1.7	2,467
CAMERON	4.1	5.0	5.2	2.7	3.1	515
CATAHOULA	5.3	5.4	5.5	8.3	2.1	1,517
CLAIBORNE	6.4	10.9	2.2	1.9	1.7	1,210
CONCORDIA	4.1	5.8	7.8	7.2	1.2	1,630
DE SOTO	1.7	7.8	5.6	2.5	1.8	2,342
EAST BATON ROUGE	13.0	2.7	3.0	1.7	2.2	49,474
EAST CARROLL	4.5	4.2	4.4	3.6	2.5	1,183
EAST FELICIANA	9.0	5.3	4.5	1.8	2.7	3,218
EVANGELINE	6.0	5.5	4.0	3.5	2.3	7,843
FRANKLIN	5.9	5.4	4.1	5.2	1.5	3,623
GRANT	7.5	4.6	3.4	6.0	2.5	3,018
IBERIA	10.1	3.1	3.4	4.7	1.5	10,267
IBERVILLE	11.2	3.3	2.5	2.5	1.9	3,889
JACKSON	1.9	6.9	5.0	3.2	2.4	3,417
JEFFERSON	8.6	3.6	3.9	3.0	2.4	50,697
JEFFERSON DAVIS	6.8	5.3	5.3	3.0	3.9	5,284
LA SALLE	5.7	7.3	6.4	5.8	2.4	2,841
LAFAYETTE	10.7	3.5	3.0	4.3	2.0	24,698
LAFOURCHE	7.2	5.0	5.2	1.3	1.8	8,411
LINCOLN	2.6	4.2	4.0	3.1	2.4	4,832
LIVINGSTON	13.2	3.2	2.8	2.4	2.1	14,176
MADISON	1.8	4.4	3.2	2.4	1.4	1,391
MOREHOUSE	5.7	3.5	4.1	5.7	1.4	2,936
NATCHITOCHEs	6.2	9.3	3.5	3.5	2.7	5,651
ORLEANS	8.7	3.1	4.2	2.1	2.2	45,874
OUACHITA	7.8	3.7	3.9	4.0	1.7	22,968
PLAQUEMINES	9.5	4.7	3.5	2.5	1.5	2,665
POINTE COUPEE	13.9	1.3	2.3	2.0	1.3	2,316
RAPIDES	8.4	4.8	3.2	4.4	1.9	20,632
RED RIVER	2.1	13.4	7.2	3.9	2.9	1,193
RICHLAND	6.1	6.0	3.9	4.5	1.5	3,832
SABINE	6.9	3.7	4.2	3.7	1.6	1,339
ST. BERNARD	6.7	4.9	4.6	4.3	2.8	8,985
ST. CHARLES	9.5	2.6	4.0	2.8	2.5	6,104
ST. HELENA	10.5	4.4	4.3	2.0	2.0	955
ST. JAMES	12.0	3.6	4.0	2.5	2.7	1,861
ST. JOHN	11.7	2.8	4.7	2.3	2.4	6,285
ST. LANDRY	7.6	3.8	3.8	4.1	2.0	16,630
ST. MARTIN	11.3	3.4	3.3	4.8	1.5	7,382
ST. MARY	10.2	3.9	4.3	3.9	1.9	6,578
ST. TAMMANY	8.7	4.3	3.7	5.9	2.3	29,243
TANGIPAHOA	9.7	4.0	4.4	3.4	1.9	18,537
TENSAS	5.7	3.3	6.0	4.5	2.1	1,743
TERREBONNE	6.8	4.9	4.3	0.8	2.1	9,931
UNION	3.9	5.9	3.7	3.9	1.7	3,484
VERMILION	9.6	3.8	3.8	4.9	1.5	8,085
VERNON	7.3	6.4	4.0	4.7	1.9	5,666
WASHINGTON	6.8	3.6	4.7	8.5	2.1	7,949
WEBSTER	5.2	5.6	3.8	3.3	2.0	5,606
WEST BATON ROUGE	12.2	1.8	2.5	2.1	2.1	2,727
WEST CARROLL	5.0	4.5	4.8	9.4	1.3	1,254
WEST FELICIANA	9.2	4.4	2.3	1.7	2.3	1,240
WINN	4.5	6.9	4.6	5.4	2.6	3,055
Missing	10.4	2.5	3.2	2.9	1.7	7,509
Out of State	3.0	3.2	2.8	4.7	2.1	16,078
State	8.6	4.0	3.8	3.4	2.1	564,852

Table 25. Percent of Total Parish Discharges for Louisiana's Top 5 Principal Diagnoses resulting in In-hospital Death, Louisiana 2005

PARISH	Septicemia (except in labor)	Acute cerebrovascular disease	Congestive heart failure, nonhypertensive	Pneumonia (except that caused by TB or STD)	Respiratory failure, insufficiency, arrest	Total # of discharges by Parish
ACADIA	14.6	2.4	6.1	7.9	5.5	164
ALLEN	21.1	0.0	5.3	1.8	3.5	57
ASCENSION	9.7	11.0	1.9	6.5	3.2	155
ASSUMPTION	10.0	0.0	12.0	6.0	10.0	50
AVOUELLES	11.7	6.6	10.7	4.1	8.2	196
BEAUREGARD	20.0	0.0	4.0	4.0	4.0	25
BIENVILLE	20.5	15.4	7.7	12.8	5.1	39
BOSSIER	8.2	12.7	3.6	0.9	9.1	110
CADDO	11.2	14.2	6.6	5.8	5.8	365
CALCASIEU	11.6	11.2	6.5	7.3	5.4	465
CALDWELL	15.4	12.8	5.1	0.0	15.4	39
CAMERON	5.9	5.9	5.9	5.9	17.6	17
CATAHOULA	11.1	11.1	11.1	7.4	14.8	27
CLAIBORNE	18.9	13.5	8.1	5.4	8.1	37
CONCORDIA	7.1	16.7	7.1	9.5	7.1	42
DE SOTO	7.3	7.3	7.3	12.7	5.5	55
EAST BATON ROUGE	15.2	8.6	5.0	6.8	5.7	1,009
EAST CARROLL	16.7	0.0	16.7	0.0	0.0	12
EAST FELICIANA	15.5	2.9	10.7	5.8	2.9	103
EVANGELINE	19.4	5.8	6.5	8.4	3.9	155
FRANKLIN	9.3	3.1	11.3	2.1	8.2	97
GRANT	11.9	3.4	10.2	5.1	8.5	59
IBERIA	10.7	7.4	5.4	6.6	4.5	242
IBERVILLE	10.2	9.1	5.7	10.2	1.1	88
JACKSON	12.5	8.3	9.7	8.3	11.1	72
JEFFERSON	9.8	6.9	6.7	7.9	7.4	1,065
JEFFERSON DAVIS	9.9	5.8	5.8	7.4	12.4	121
LA SALLE	15.0	5.0	13.3	3.3	5.0	60
LAFAYETTE	8.5	3.6	4.5	7.5	7.1	550
LAFOURCHE	11.4	6.3	8.6	6.9	9.1	175
LINCOLN	13.4	8.4	5.0	6.7	5.9	119
LIVINGSTON	13.7	9.3	5.4	5.9	4.9	205
MADISON	2.7	2.7	10.8	8.1	5.4	37
MOREHOUSE	18.1	6.9	5.6	2.8	5.6	72
NATCHITOCHEs	9.9	3.6	19.8	1.8	5.4	111
ORLEANS	12.0	6.1	5.9	7.0	4.8	1,072
OUACHITA	17.9	6.5	6.0	5.1	6.9	554
PLAQUEMINES	11.8	7.8	13.7	2.0	7.8	51
POINTE COUPEE	14.6	8.3	2.1	4.2	2.1	48
RAPIDES	17.1	10.9	7.8	5.2	7.8	422
RED RIVER	20.0	3.3	13.3	6.7	6.7	30
RICHLAND	17.6	2.2	15.4	4.4	5.5	91
SABINE	13.8	27.6	3.4	10.3	0.0	29
ST. BERNARD	6.1	10.0	9.1	5.2	6.5	230
ST. CHARLES	8.4	6.7	8.4	6.7	5.9	119
ST. HELENA	0.0	0.0	5.0	15.0	5.0	20
ST. JAMES	19.0	7.1	9.5	0.0	7.1	42
ST. JOHN	15.2	10.7	4.5	3.6	4.5	112
ST. LANDRY	16.9	7.9	7.0	6.5	5.9	355
ST. MARTIN	10.3	2.9	4.6	9.1	6.3	175
ST. MARY	11.6	8.5	11.0	9.8	4.3	164
ST. TAMMANY	8.4	5.2	6.6	5.9	7.9	594
TANGIPAHOA	12.4	4.1	8.6	6.6	5.3	394
TENSAS	13.5	8.1	2.7	5.4	0.0	37
TERREBONNE	8.0	5.7	7.4	6.9	6.9	175
UNION	16.2	5.4	6.8	5.4	5.4	74
VERMILION	2.7	7.5	7.5	7.0	9.1	187
VERNON	11.2	6.4	4.8	8.0	8.0	125
WASHINGTON	16.1	4.7	5.7	5.7	7.3	193
WEBSTER	17.3	3.6	6.5	7.9	5.8	139
WEST BATON ROUGE	13.3	11.7	3.3	5.0	1.7	60
WEST CARROLL	13.6	0.0	13.6	9.1	9.1	22
WEST FELICIANA	15.0	7.5	2.5	15.0	5.0	40
WINN	25.0	6.0	7.1	11.9	3.6	84
Missing	8.9	5.1	5.1	7.0	7.0	158
Out of State	11.0	12.8	3.3	3.9	5.3	337
State	12.3	7.3	6.7	6.5	6.3	12,328

Table 26. Percentage and Average Charges for Source of Charge by Parish, Louisiana, 2005

Parish	TRICARE		Medicaid		Medicare		Private		Total # of Discharges
	%	Avg*\$	%	Avg*\$	%	Avg*\$	%	Avg*\$	
ACADIA	0.2	18,949	36.5	7,960	35.1	16,826	21.1	11,947	7,763
ALLEN	0.1	30,719	24.2	10,531	46.8	16,795	22.2	18,386	2,000
ASCENSION	0.8	8,638	22.1	11,411	22.9	18,698	48.3	12,708	10,477
ASSUMPTION	0.3	20,230	22.9	12,284	43.4	15,770	22.8	15,983	2,420
AVOUELLES	0.3	17,907	27.4	12,815	46.8	22,234	21.1	18,461	7,420
BEAUREGARD	1.2	18,629	22.7	11,368	39.4	22,687	31.1	16,579	1,239
BIENVILLE	0.3	4,996	24.8	7,829	50.2	21,947	15.5	15,823	1,666
BOSSIER	12.2	17,831	12.8	21,543	45.8	31,206	26.3	22,904	4,178
CADDO	2.0	20,907	17.1	19,772	54.2	27,436	23.1	20,071	13,507
CALCASIEU	0.6	18,054	23.7	14,182	41.7	25,309	28.8	19,315	19,946
CALDWELL	0.2	2,992	22.0	6,567	49.5	17,929	23.5	13,356	2,467
CAMERON	0.0	(**)	15.9	9,631	46.4	23,964	31.7	18,669	515
CATAHOULA	0.2	19,275	20.5	12,939	55.8	22,342	18.5	22,229	1,517
CLAIBORNE	0.2	18,680	27.2	7,665	40.2	23,315	20.6	16,866	1,210
CONCORDIA	0.2	50,639	23.1	14,891	55.5	23,382	16.4	22,571	1,630
DE SOTO	0.2	14,492	14.7	13,534	59.6	18,307	23.6	15,827	2,342
EAST BATON ROUGE	0.5	14,325	28.6	10,393	29.9	18,623	35.2	13,722	49,474
EAST CARROLL	0.0	(**)	35.5	6,687	46.3	13,709	13.1	10,403	1,183
EAST FELICIANA	0.1	44,802	22.1	12,069	40.9	17,182	29.5	12,466	3,218
EVANGELINE	0.7	25,014	32.6	10,758	45.4	21,204	15.6	15,013	7,843
FRANKLIN	0.1	10,783	25.7	7,128	51.7	17,725	18.1	15,676	3,623
GRANT	1.3	20,751	26.9	13,586	40.4	25,921	26.3	19,396	3,018
IBERIA	0.3	14,890	32.3	12,728	40.8	24,442	20.3	17,421	10,267
IBERVILLE	0.4	11,751	27.4	14,797	29.5	23,732	31.0	17,233	3,889
JACKSON	0.1	10,789	22.8	7,893	50.7	16,108	20.5	15,821	3,417
JEFFERSON	0.7	22,049	21.7	17,876	28.3	30,473	40.7	28,089	50,697
JEFFERSON DAVIS	0.5	20,999	24.7	8,258	45.8	15,372	24.3	12,085	5,284
LA SALLE	0.1	9,647	21.5	12,441	54.2	20,355	21.6	16,014	2,841
LAFAYETTE	0.5	17,320	24.2	11,467	34.9	23,503	32.5	16,486	24,698
LAFOURCHE	0.2	20,532	27.7	9,448	41.8	16,020	22.9	12,570	8,411
LINCOLN	0.3	10,425	24.1	11,096	41.3	22,501	27.1	16,885	4,832
LIVINGSTON	0.7	14,205	25.1	11,928	24.1	21,177	43.7	14,869	14,176
MADISON	0.1	1,766	30.3	5,486	46.2	11,016	12.7	9,578	1,391
MOREHOUSE	0.3	17,525	25.7	14,162	44.4	31,653	20.7	20,902	2,936
NATCHITOCHE	0.7	13,395	30.9	8,111	40.9	19,738	22.3	14,851	5,651
ORLEANS	0.6	24,162	29.5	20,897	28.2	37,607	31.7	33,813	45,874
OUACHITA	0.6	14,526	23.9	9,653	41.6	27,072	27.0	18,973	22,968
PLAQUEMINES	6.9	15,708	23.1	23,709	20.8	35,473	42.4	32,417	2,665
POINTE COUPEE	0.3	7,876	28.6	10,228	33.0	21,175	32.5	14,646	2,316
RAPIDES	1.7	18,589	28.0	15,039	40.7	27,550	25.3	19,458	20,632
RED RIVER	0.3	15,522	20.0	8,491	57.3	18,161	15.4	14,592	1,193
RICHLAND	0.4	11,821	27.2	6,852	48.5	16,605	19.3	14,834	3,832
SABINE	0.4	18,472	21.6	8,094	49.2	26,367	25.1	18,748	1,339
ST. BERNARD	0.6	19,957	19.2	19,965	37.4	40,108	37.4	30,295	8,985
ST. CHARLES	0.4	21,175	20.2	12,687	27.2	25,876	47.7	20,204	6,104
ST. HELENA	0.3	33,786	31.6	11,532	39.3	27,097	21.8	21,672	955
ST. JAMES	0.1	1,491	25.7	10,229	39.0	24,451	30.3	19,041	1,861
ST. JOHN	0.4	15,872	26.8	13,702	32.3	28,478	34.1	20,593	6,285
ST. LANDRY	0.6	18,284	31.0	10,265	39.2	20,205	20.0	15,330	16,630
ST. MARTIN	0.6	11,859	28.1	11,463	38.0	23,358	27.6	16,090	7,382
ST. MARY	0.4	19,117	18.8	12,888	36.0	21,497	18.7	16,943	6,578
ST. TAMMANY	1.6	24,291	15.7	16,456	31.3	36,826	45.4	28,735	29,243
TANGIPAHOA	0.7	24,403	28.7	16,485	39.2	31,428	25.0	21,634	18,537
TENSAS	0.2	11,079	27.6	13,667	35.2	26,928	29.8	28,995	1,743
TERREBONNE	0.5	18,005	33.1	9,613	36.0	17,268	24.1	12,164	9,931
UNION	0.4	28,093	22.0	10,960	46.4	20,584	24.9	17,986	3,484
VERMILION	0.5	16,526	24.2	10,896	40.5	19,129	26.9	14,836	8,085
VERNON	3.5	19,777	22.6	12,594	41.6	26,575	27.1	20,129	5,666
WASHINGTON	0.6	25,356	26.1	16,599	45.4	32,000	22.5	27,125	7,949
WEBSTER	0.5	19,406	22.8	9,539	48.4	18,877	18.2	14,936	5,606
WEST BATON ROUGE	0.3	9,363	24.2	11,277	27.4	18,029	40.4	13,195	2,727
WEST CARROLL	0.2	3,520	20.8	10,808	56.2	23,568	17.5	16,579	1,254
WEST FELICIANA	1.0	8,952	23.2	12,724	32.8	18,093	31.7	16,618	1,240
WINN	1.0	16,011	23.2	12,976	49.2	19,088	21.7	15,982	3,055
Missing	0.7	16,132	22.5	15,583	34.1	26,969	35.5	20,697	7,509
Out of State	2.3	26,740	6.6	35,281	40.1	36,768	38.7	31,557	16,078
State	0.9	19,725	24.7	13,672	36.6	25,673	30.7	21,360	564,852

Note: Avg*\$ stands for average charges in dollars

(**) Division by zero

Table 26. (Cont.) Percentage and Average Charges for Source of Charge by Parish, Louisiana, 2005

Parish	Self Insured		Self Pay		Workers Comp		Other, Unknown		Total # of Discharges
	%	Avg*\$	%	Avg*\$	%	Avg*\$	%	Avg*\$	
ACADIA	0.0	(**)	4.4	7,185	0.5	14,125	2.3	16,367	7,763
ALLEN	0.0	(**)	2.6	8,042	0.2	64,009	4.0	7,601	2,000
ASCENSION	0.2	5,346	3.8	12,038	0.4	24,849	1.6	9,696	10,477
ASSUMPTION	0.0	6,628	2.5	14,890	0.3	26,642	7.8	11,861	2,420
AVOYELLES	0.1	11,379	1.7	19,605	0.4	28,996	2.2	15,693	7,420
BEAUREGARD	0.0	(**)	3.1	14,041	1.0	36,229	1.5	15,594	1,239
BIENVILLE	0.1	1,473	2.9	9,514	0.2	10,292	5.9	20,349	1,666
BOSSIER	0.0	4,623	1.7	15,142	0.5	34,699	0.7	27,069	4,178
CADDO	0.0	7,481	2.6	15,937	0.4	28,520	0.6	27,021	13,507
CALCASIEU	0.2	13,314	2.4	18,018	0.4	34,348	2.3	13,371	19,946
CALDWELL	0.6	23,812	0.2	17,152	0.7	22,191	3.4	8,255	2,467
CAMERON	0.4	9,656	2.5	18,345	0.6	39,833	2.5	14,020	515
CATAHOULA	0.1	5,373	1.1	21,818	0.5	22,845	3.4	13,288	1,517
CLAIBORNE	0.0	(**)	3.8	14,218	0.3	29,971	7.8	14,274	1,210
CONCORDIA	0.2	60,498	0.8	25,335	0.3	14,093	3.6	8,247	1,630
DE SOTO	0.0	(**)	0.9	12,102	0.3	27,706	0.6	63,687	2,342
EAST BATON ROUGE	0.1	4,433	2.9	13,874	0.3	26,661	2.5	10,507	49,474
EAST CARROLL	0.3	13,033	0.5	13,370	0.2	9,906	4.1	7,709	1,183
EAST FELICIANA	0.0	48,584	1.4	13,009	0.3	15,470	5.6	10,384	3,218
EVANGELINE	0.1	13,588	3.3	10,807	0.4	23,509	1.8	13,045	7,843
FRANKLIN	0.2	19,136	0.1	9,623	0.3	14,958	3.8	7,624	3,623
GRANT	0.0	28,840	1.6	24,205	0.6	33,156	2.9	17,162	3,018
IBERIA	0.0	(**)	4.0	12,989	0.4	19,523	1.8	16,488	10,267
IBERVILLE	0.1	2,522	2.7	14,194	0.3	21,218	8.7	11,112	3,889
JACKSON	0.2	8,835	3.2	8,820	0.4	16,210	2.0	6,749	3,417
JEFFERSON	0.8	16,769	4.4	20,032	0.3	34,892	3.0	16,504	50,697
JEFFERSON DAVIS	0.0	(**)	3.4	8,786	0.4	22,826	1.0	19,269	5,284
LA SALLE	0.1	3,635	0.5	28,529	0.5	35,748	1.5	6,204	2,841
LAFAYETTE	0.1	9,216	3.3	14,624	0.4	19,513	4.1	14,981	24,698
LAFOURCHE	0.1	13,494	2.9	10,778	0.4	33,284	4.0	8,802	8,411
LINCOLN	0.2	6,827	4.0	13,226	0.5	46,082	2.5	7,850	4,832
LIVINGSTON	0.2	8,234	4.5	15,293	0.4	27,021	1.3	15,373	14,176
MADISON	0.0	(**)	6.5	5,262	0.0	(**)	4.1	8,119	1,391
MOREHOUSE	0.4	7,691	0.6	22,799	0.0	9,471	7.8	15,294	2,936
NATCHITOCHE	0.0	4,193	4.3	11,821	0.3	23,347	0.5	17,296	5,651
ORLEANS	0.4	20,435	2.5	23,702	0.2	39,875	7.0	18,537	45,874
OUACHITA	0.9	14,728	0.5	19,645	0.3	20,877	5.3	8,512	22,968
PLAQUEMINES	0.6	20,970	3.2	28,510	0.1	32,945	3.0	12,613	2,665
POINTE COUPEE	0.1	2,650	2.6	16,735	0.6	19,313	2.2	10,086	2,316
RAPIDES	0.0	27,981	2.0	22,499	0.4	33,016	1.8	10,452	20,632
RED RIVER	0.0	(**)	6.1	9,931	0.4	6,746	0.4	42,816	1,193
RICHLAND	0.1	7,263	0.2	15,483	0.3	29,620	4.0	7,780	3,832
SABINE	0.0	(**)	1.7	14,577	1.0	23,291	1.0	8,709	1,339
ST. BERNARD	0.1	39,162	1.8	15,919	0.6	38,198	3.0	17,009	8,985
ST. CHARLES	0.7	26,197	1.7	17,224	0.4	17,265	1.8	12,297	6,104
ST. HELENA	0.0	(**)	4.4	10,290	0.7	61,264	1.9	8,352	955
ST. JAMES	0.2	32,957	2.9	8,915	0.1	25,313	1.7	19,897	1,861
ST. JOHN	0.6	10,519	3.1	13,503	0.3	26,457	2.4	14,519	6,285
ST. LANDRY	0.2	7,018	4.3	11,664	0.5	26,392	4.3	10,422	16,630
ST. MARTIN	0.0	3,610	2.9	12,044	0.6	18,026	2.4	13,112	7,382
ST. MARY	0.0	29,830	1.2	10,289	0.4	25,083	24.5	10,890	6,578
ST. TAMMANY	0.2	21,200	3.7	23,745	0.3	42,550	1.8	23,718	29,243
TANGIPAHOA	0.9	18,740	3.1	16,933	0.3	30,510	2.1	21,042	18,537
TENSAS	0.9	15,630	3.4	26,406	0.3	34,739	2.5	10,472	1,743
TERREBONNE	0.0	36,821	1.1	19,210	0.4	17,594	4.8	26,803	9,931
UNION	0.7	13,217	1.8	7,687	0.4	19,474	3.3	9,555	3,484
VERMILION	0.0	(**)	4.8	9,922	0.7	29,081	2.4	17,482	8,085
VERNON	0.0	9,116	2.5	16,594	0.9	30,145	1.8	19,452	5,666
WASHINGTON	0.1	20,415	1.1	19,266	0.3	74,420	4.0	18,994	7,949
WEBSTER	0.0	4,205	3.1	10,048	0.2	29,348	6.6	21,587	5,606
WEST BATON ROUGE	0.1	2,904	3.1	20,206	0.4	25,872	4.1	10,580	2,727
WEST CARROLL	0.5	18,535	0.1	3,640	0.2	30,875	4.5	6,514	1,254
WEST FELICIANA	0.0	(**)	2.3	14,065	0.3	23,064	8.7	16,420	1,240
WINN	0.0	8,752	3.2	10,623	0.3	10,928	1.3	12,079	3,055
Missing	0.1	7,041	3.8	14,406	0.9	38,071	2.4	22,283	7,509
Out of State	0.3	45,901	7.5	17,983	1.4	30,244	3.1	20,326	16,078
State	0.3	17,081	3.0	16,448	0.4	29,611	3.5	14,905	564,852

Note: Avg*\$ stands for average charges in dollars

(**) Division by zero

Table 27. Percent of Louisiana's Top 5 Principal Diagnoses by Parish, Louisiana, 2005

PARISH	Liveborn	Pneumonia (except that caused by TB or STDs)	Congestive heart failure, nonhypertensive	Coronary atherosclerosis and other heart disease	Skin and subcutaneous tissue infections
ACADIA	1.2	2.1	1.3	1.1	1.5
ALLEN	0.3	0.6	0.3	0.3	0.4
ASCENSION	3.3	1.3	1.3	1.1	1.9
ASSUMPTION	0.4	0.6	0.5	0.2	0.3
AVOUELLES	1.1	1.6	1.4	1.7	1.3
BEAUREGARD	0.2	0.3	0.2	0.2	0.3
BIENVILLE	0.2	0.5	0.4	0.3	0.4
BOSSIER	0.5	0.6	0.6	0.3	0.6
CADDO	1.0	2.7	2.5	1.5	2.3
CALCASIEU	3.3	3.7	3.2	2.6	4.1
CALDWELL	0.2	0.6	0.6	0.4	0.4
CAMERON	0.0	0.1	0.1	0.1	0.1
CATAHOULA	0.2	0.4	0.4	0.7	0.3
CLAIBORNE	0.2	0.6	0.1	0.1	0.2
CONCORDIA	0.1	0.4	0.6	0.6	0.2
DE SOTO	0.1	0.8	0.6	0.3	0.4
EAST BATON ROUGE	13.2	5.8	7.0	4.5	8.9
EAST CARROLL	0.1	0.2	0.2	0.2	0.3
EAST FELICIANA	0.6	0.8	0.7	0.3	0.7
EVANGELINE	1.0	1.9	1.5	1.4	1.5
FRANKLIN	0.4	0.9	0.7	1.0	0.4
GRANT	0.5	0.6	0.5	0.9	0.6
IBERIA	2.1	1.4	1.6	2.5	1.3
IBERVILLE	0.9	0.6	0.5	0.5	0.6
JACKSON	0.1	1.0	0.8	0.6	0.7
JEFFERSON	9.0	7.9	9.2	8.0	10.1
JEFFERSON DAVIS	0.7	1.2	1.3	0.8	1.7
LA SALLE	0.3	0.9	0.9	0.9	0.6
LAFAYETTE	5.4	3.8	3.5	5.5	4.1
LAFOURCHE	1.3	1.8	2.1	0.6	1.3
LINCOLN	0.3	0.9	0.9	0.8	1.0
LIVINGSTON	3.9	2.0	1.9	1.8	2.5
MADISON	0.1	0.3	0.2	0.2	0.2
MOREHOUSE	0.3	0.4	0.6	0.9	0.3
NATCHITOCHE	0.7	2.3	0.9	1.0	1.3
ORLEANS	8.2	6.3	9.0	5.1	8.3
OUACHITA	3.7	3.7	4.2	4.8	3.2
PLAQUEMINES	0.5	0.6	0.4	0.3	0.3
POINTE COUPEE	0.7	0.1	0.3	0.2	0.3
RAPIDES	3.6	4.4	3.1	4.7	3.3
RED RIVER	0.1	0.7	0.4	0.2	0.3
RICHLAND	0.5	1.0	0.7	0.9	0.5
SABINE	0.2	0.2	0.3	0.3	0.2
ST. BERNARD	1.2	1.9	1.9	2.0	2.1
ST. CHARLES	1.2	0.7	1.2	0.9	1.3
ST. HELENA	0.2	0.2	0.2	0.1	0.2
ST. JAMES	0.5	0.3	0.4	0.2	0.4
ST. JOHN	1.5	0.8	1.4	0.8	1.2
ST. LANDRY	2.6	2.8	3.0	3.5	2.8
ST. MARTIN	1.7	1.1	1.2	1.9	0.9
ST. MARY	1.4	1.1	1.3	1.3	1.0
ST. TAMMANY	5.2	5.5	5.1	9.1	5.7
TANGIPAHOA	3.7	3.3	3.8	3.3	2.9
TENSAS	0.2	0.3	0.5	0.4	0.3
TERREBONNE	1.4	2.2	2.0	0.4	1.7
UNION	0.3	0.9	0.6	0.7	0.5
VERMILION	1.6	1.3	1.4	2.1	1.0
VERNON	0.8	1.6	1.1	1.4	0.9
WASHINGTON	1.1	1.3	1.8	3.5	1.4
WEBSTER	0.6	1.4	1.0	1.0	0.9
WEST BATON ROUGE	0.7	0.2	0.3	0.3	0.5
WEST CARROLL	0.1	0.3	0.3	0.6	0.1
WEST FELICIANA	0.2	0.2	0.1	0.1	0.2
WINN	0.3	0.9	0.7	0.9	0.7
Missing, Unknown, Blank	1.6	0.8	1.1	1.1	1.1
OUT OF STATE	1.0	2.3	2.1	4.0	2.8
Total # of Discharges by Diagnosis	48,483	22,726	21,268	19,132	11,942
Total % of Discharges by Diagnosis	100.00	100.00	100.00	100.00	100.00

Table 28. Percent of Louisiana's Top 5 Principal Diagnoses resulting in In-Hospital Death by Parish, Louisiana 2005

PARISH	Septicemia (except in labor)	Respiratory failure, insufficieny, arrest	Pneumonia (except that caused by TB or STD)	Acute cerebrovascul ar disease	Congestive heart failure, nonhypertensi ve
ACADIA	1.6	0.4	1.2	1.6	1.2
ALLEN	0.8	0.0	0.4	0.1	0.3
ASCENSION	1.0	1.9	0.4	1.3	0.6
ASSUMPTION	0.3	0.0	0.7	0.4	0.6
AVOUELLES	1.5	1.4	2.6	1.0	2.1
BEAUREGARD	0.3	0.0	0.1	0.1	0.1
BIENVILLE	0.5	0.7	0.4	0.6	0.3
BOSSIER	0.6	1.6	0.5	0.1	1.3
CADDO	2.7	5.8	2.9	2.6	2.7
CALCASIEU	3.6	5.8	3.7	4.3	3.2
CALDWELL	0.4	0.6	0.2	0.0	0.8
CAMERON	0.1	0.1	0.1	0.1	0.4
CATAHOULA	0.2	0.3	0.4	0.3	0.5
CLAIBORNE	0.5	0.6	0.4	0.3	0.4
CONCORDIA	0.2	0.8	0.4	0.5	0.4
DE SOTO	0.3	0.4	0.5	0.9	0.4
EAST BATON ROUGE	10.1	9.7	6.1	8.6	7.5
EAST CARROLL	0.1	0.0	0.2	0.0	0.0
EAST FELICIANA	1.1	0.3	1.3	0.8	0.4
EVANGELINE	2.0	1.0	1.2	1.6	0.8
FRANKLIN	0.6	0.3	1.3	0.3	1.0
GRANT	0.5	0.2	0.7	0.4	0.6
IBERIA	1.7	2.0	1.6	2.0	1.4
IBERVILLE	0.6	0.9	0.6	1.1	0.1
JACKSON	0.6	0.7	0.9	0.8	1.0
JEFFERSON	6.8	8.1	8.7	10.5	10.2
JEFFERSON DAVIS	0.8	0.8	0.9	1.1	1.9
LA SALLE	0.6	0.3	1.0	0.3	0.4
LAFAYETTE	3.1	2.2	3.0	5.1	5.0
LAFOURCHE	1.3	1.2	1.8	1.5	2.1
LINCOLN	1.1	1.1	0.7	1.0	0.9
LIVINGSTON	1.8	2.1	1.3	1.5	1.3
MADISON	0.1	0.1	0.5	0.4	0.3
MOREHOUSE	0.9	0.6	0.5	0.3	0.5
NATCHITOCHE	0.7	0.4	2.7	0.3	0.8
ORLEANS	8.5	7.2	7.7	9.4	6.6
OUACHITA	6.5	4.0	4.0	3.5	4.9
PLAQUEMINES	0.4	0.4	0.9	0.1	0.5
POINTE COUPEE	0.5	0.4	0.1	0.3	0.1
RAPIDES	4.7	5.1	4.0	2.8	4.3
RED RIVER	0.4	0.1	0.5	0.3	0.3
RICHLAND	1.1	0.2	1.7	0.5	0.6
SABINE	0.3	0.9	0.1	0.4	0.0
ST. BERNARD	0.9	2.6	2.6	1.5	1.9
ST. CHARLES	0.7	0.9	1.2	1.0	0.9
ST. HELENA	0.0	0.0	0.1	0.4	0.1
ST. JAMES	0.5	0.3	0.5	0.0	0.4
ST. JOHN	1.1	1.3	0.6	0.5	0.6
ST. LANDRY	3.9	3.1	3.0	2.9	2.7
ST. MARTIN	1.2	0.6	1.0	2.0	1.4
ST. MARY	1.3	1.6	2.2	2.0	0.9
ST. TAMMANY	3.3	3.5	4.8	4.4	6.1
TANGIPAHOA	3.2	1.8	4.1	3.3	2.7
TENSAS	0.3	0.3	0.1	0.3	0.0
TERREBONNE	0.9	1.1	1.6	1.5	1.6
UNION	0.8	0.4	0.6	0.5	0.5
VERMILION	0.3	1.6	1.7	1.6	2.2
VERNON	0.9	0.9	0.7	1.3	1.3
WASHINGTON	2.0	1.0	1.3	1.4	1.8
WEBSTER	1.6	0.6	1.1	1.4	1.0
WEST BATON ROUGE	0.5	0.8	0.2	0.4	0.1
WEST CARROLL	0.2	0.0	0.4	0.3	0.3
WEST FELICIANA	0.4	0.3	0.1	0.8	0.3
WINN	1.4	0.6	0.7	1.3	0.4
Missing	0.9	0.9	1.0	1.4	1.4
Out of State	2.4	4.8	1.3	1.6	2.3
Total # of In-Hospital death by Diagnosis	1,520	897	820	800	773
Total % of In-Hospital death by Diagnosis	100.0	100.0	100.0	100.0	100.0

**Table 29. Discharge Status by Year
Louisiana, 2004-2005**

Discharge Status	2004		2005	
	Number	Percent	Number	Percent
Discharged to home or self care (routine discharge)	463,253	73.9	415,736	73.6
Long term care or other facilities	50,000	8.0	43,220	7.7
Another short term general hospital	11,509	1.8	10,397	1.8
Mental Health Center	6	0.0	3	0.0
Home Health Care	52,807	8.4	49,636	8.8
Hospice (home/medical facility)	3,967	0.6	3,902	0.7
In-hospital Death	13,499	2.2	12,328	2.2
Left against medical advice or discontinued care	4,574	0.7	4,335	0.8
Other/Unknown	27,085	4.3	25,295	4.5
Total Discharge Status	626,700	100.0	564,852	100.0

**Table 30. Number of Discharges by Principal Diagnoses and Health Region
Louisiana, 2005**

PARISH	Liveborn	Congestive heart failure, nonhypertensive	Pneumonia (except that caused by TB or STD)
ORLEANS	3,984	1,916	1,432
ST. BERNARD	601	413	439
JEFFERSON	4,368	1,966	1,803
PLAQUEMINES	254	94	125
Health Region 1	9,207	4,389	3,799

PARISH	Liveborn	Congestive heart failure, nonhypertensive	Pneumonia (except that caused by TB or STD)
EAST FELICIANA	290	146	171
POINTE COUPEE	321	54	30
EAST BATON ROUGE	6,421	1,486	1,323
WEST BATON ROUGE	334	69	50
WEST FELICIANA	114	29	55
IBERVILLE	436	98	130
ASCENSION	1,602	272	285
Health Region 2	9,518	2,154	2,044

PARISH	Liveborn	Congestive heart failure, nonhypertensive	Pneumonia (except that caused by TB or STD)
ST. MARY	673	282	258
TERREBONNE	672	428	491
ST. JOHN	735	298	177
ASSUMPTION	199	99	130
LAFOURCHE	607	438	419
ST. JAMES	223	75	67
ST. CHARLES	582	247	159
Health Region 3	3,691	1,867	1,701

PARISH	Liveborn	Coronary atherosclerosis and other heart diseases	Pneumonia (except that caused by TB or STD)
IBERIA	1,042	485	317
VERMILION	780	399	306
LAFAYETTE	2,631	1,054	862
ST. MARTIN	832	358	252
ACADIA	590	212	486
ST. LANDRY	1,270	679	628
EVANGELINE	467	275	430
ST. HELENA	100	19	42
Health Region 4	7,712	3,481	3,323

Continued

**Table 30. (Cont.) Number of Discharges by Principal Diagnoses and Health Region
Louisiana 2005**

PARISH	Liveborn	Pneumonia (except that caused by TB or STD)	Congestive heart failure, nonhypertensive
JEFFERSON DAVIS	361	278	282
CALCASIEU	1,590	835	690
CAMERON	21	26	27
BEAUREGARD	94	73	52
ALLEN	123	146	71
Health Region 5	2,189	1,358	1,122

PARISH	Liveborn	Pneumonia (except that caused by TB or STD)	Coronary atherosclerosis and other heart diseases
AVOUELLES	553	355	317
LA SALLE	163	208	166
RAPIDES	1,725	993	908
CATAHOULA	81	82	126
CONCORDIA	67	94	118
VERNON	412	360	266
WINN	138	211	164
GRANT	227	138	181
Health Region 6	3,366	2,441	2,246

PARISH	Pneumonia (except that caused by TB or STD)	Liveborn	Congestive heart failure, nonhypertensive
RED RIVER	160	25	86
CADDO	609	504	534
SABINE	50	92	56
NATCHITOCHEs	525	353	195
CLAIBORNE	132	77	27
WEBSTER	315	292	215
BOSSIER	147	260	127
BIENVILLE	106	78	76
DE SOTO	183	40	132
Health Region 7	2,227	1,721	1,448

Continued

**Table 30. (Cont.) Number of Discharges by Principal Diagnoses and Health Region
Louisiana 2005**

PARISH	Liveborn	Pneumonia (except that caused by TB or STD)	Congestive heart failure, nonhypertensive
RICHLAND	232	229	151
UNION	135	204	130
FRANKLIN	214	196	148
OUACHITA	1,782	848	885
TENSAS	99	57	104
JACKSON	66	235	171
MADISON	25	61	45
MOREHOUSE	168	102	120
WEST CARROLL	63	57	60
CALDWELL	117	145	138
EAST CARROLL	53	50	52
LINCOLN	126	201	192
Health Region 8	3,080	2,385	2,196

PARISH	Liveborn	Coronary atherosclerosis and other heart disease	Pneumonia (except that caused by TB or STD)
ST. TAMMANY	2,530	1,735	1,258
WASHINGTON	537	674	288
TANGIPAOA	1,801	626	747
LIVINGSTON	1,873	335	449
Health Region 9	6,741	3,370	2,742

Hospital Inpatient Discharge Data

Louisiana

LAHIDD Report



Technical Notes

2005

TECHNICAL NOTES

In December 1998, the State Health Care Data Clearinghouse began collecting data related to hospital inpatient discharges from Louisiana's licensed hospitals. The information was submitted from acute care, long-term care, psychiatric, rehabilitation, and specialty hospitals.

The Louisiana Hospital Inpatient Discharge Database (LAHIDD) is based on the Health Care Financing Administration (HCFA) Uniform Billing UB-92 information. The LAC 48:V. Chapter 151, Section 15125 lists the required elements for LAHIDD submission.

Diagnoses and Procedures Classification

The diagnosis and procedures grouping methodology used in this report was generated using the Clinical Classifications Software (CCS) developed by the Agency for Healthcare Research and Quality (AHRQ). CCS aggregates the 4,290 procedures and the 15,298 diseases coded according to the International Classification of Diseases, 9th Revision, Clinical Modification (ICD-9-CM) into 260 clinically meaningful disease categories (ref: <http://www.hcup-us.ahrq.gov/toolssoftware/ccs/ccsfactsheet.jsp>).

LAHIDD also uses the Body System classification codes, which includes the following 18 groups of disease categories:

- Infectious and Parasitic Diseases
- Neoplasms
- Endocrine, Nutritional, Metabolic and Immune Diseases
- Diseases of the Blood and Blood-Forming Organs
- Mental Disorders
- Diseases of the Nervous System and Sense Organs
- Diseases of the Circulatory System
- Diseases of the Respiratory System
- Diseases of the Digestive System
- Diseases of the Genitourinary System
- Complication of Pregnancy, Childbirth, and the Puerperium
- Diseases of the Skin and Subcutaneous Tissue
- Diseases of the Musculoskeletal System and Connective Tissue
- Congenital Anomalies
- Perinatal Conditions
- Injury and Poisoning
- Other Conditions
- E Codes

When comparing 2004 and 2005, data consider the following:

- The number of reporting hospitals was 161 in the year 2004 and 140 in the year 2005.
- Types of hospitals reporting data are different for year 2004 and year 2005. (For instance, in 2004, 123 Acute Care hospitals reported to LAHIDD and in 2005, the number went down to 99). Similar changes are seen in other types of hospitals, e.g., Long-Term Care, Rehabilitation, Pediatric, and Psychiatric.

Hospital Inpatient Discharge Data

Louisiana

LAHIDD Report



Glossary

2005

GLOSSARY

The following terms are related to LAHIDD. Some of them may not appear in this report.

Admit – A patient admitted to the provider for inpatient care or outpatient service.

Admitting Diagnosis – The ICD-9-CM diagnosis code provide at the time of admission as stated by the physician.

CHAMPUS (now called TRICARE) – The government's health insurance program for members of the seven U.S. uniformed military services, including active duty members of the military, military retirees, and their eligible dependents.

Comorbidities – Coexisting medical problems that are listed as other diagnoses and are not directly related to the principal diagnosis.

Confidential Information – That information defined as confidential by this rule includes, but is not limited to:

- Employer identifiers, facility identifiers, patient or insured identifiers, payer identifiers, or physician or other service provider identifiers;
- Information referenced by the identifiers;
- Combinations of data categories derived from part or all hospital discharge database information that would identify or tend to identify an employer, facility, patient or insured person, payer, or physician or other service provider; and
- Information identified by combinations of these data categories.

Covered Benefit – A health service or item that is included in the health plan, and that is paid for either partially or fully.

Covered Charges – Services or benefits for which a health plan makes either partial or full payment.

Covered Days – The number of days covered by the primary payer, as qualified by the payer organization.

Custodial Care – Non-skilled, personal care, such as help with activities of daily living like bathing, dressing, eating, getting in and out of bed or chair, moving around, and using the bathroom. It may also include care that most people do themselves, like using eye drops.

Database – A structured repository of data, consisting of one or more related structured data tables.

Data Category – One of the typically (though not necessarily) non-unique data values of a data element, or to the equivalent labels for these values. For example, the data categories of the data element years may be three in number: "98", "99", "00", and may be labeled "1998", "1999" and "2000", whereas the data categories of the data element patient birth date may have thousands of possible values, some of which are probably uniquely associated with exactly one person.

Data Element – A logical field of a data record or a column of a data table, and includes both the named data elements in this rule, and any other data elements obtained or created by analytic or synthetic methods. Examples: Discharge year, age group, sex, and disease group.

Data Record – The row of a data table, or the set of related rows from related tables in a database.

Data Set – A structured subset of data from a database.

Discharge – A patient release from the Hospital or move from one level of care to another. It may include moves from a hospital to a nursing home or to home care.

Discharge Date – Date that the patient was discharged from inpatient care.

External Cause of Injury (E-Code) – The ICD-9-CM code which describes the external cause of the injury, poisoning or adverse effect.

Health Care Provider – A person who is trained and licensed to give health care. Also, a place licensed to give health care. Doctors, nurses, hospitals, skilled nursing facilities, some assisted living facilities, and certain kinds of home health agencies are examples of health care providers.

Health insurance – Insurance providing coverage of medical, surgical or hospital care in general or for which there is no specific heading.

Hospital – Any institution, place, building or agency, public or private, whether organized for profit or not-for-profit, which is subject to licensure as such by the Louisiana Department of Health and Hospitals.

Hospital Discharge Information – All billing, medical, and personal information describing a patient, the services received, and charges billed, associated with a single inpatient hospital stay, including all elements of the Uniform Billing form, UB-92.

Hospital Discharge (Data) Record – The structured document, in paper or electronic form, of all the UB-92 data for a single hospital stay, or the data content of that document. This often will include more than one data record.

Hospital Stay or Inpatient Hospital Stay – The period, activities, events, and conditions associated with a patient, from the time of admission to a hospital, to the time of discharge from that hospital. Facilities licensed as hospitals and having different provider numbers are, for the purpose of this definition, distinct hospitals having discrete hospital stays and hospital discharges.

Insurance – Coverage by contract whereby one part indemnifies or guarantees another against loss by a specified contingency.

Intermediary – A data processing agent of a hospital, who is contracted or employed by that hospital to relay their Hospital Discharge Records to OPH in compliance with these rules.

Long-term Care – A "variety" of services that help people with health or personal needs and activities of daily living over a period of time. Long-term care can be provided at home, in the community, or in various types of facilities, including nursing homes and assisted living facilities. Most long-term care is custodial care.

Medicaid – A Federal-State health insurance program for certain low-income and needy people. It covers approximately 36 million individuals including children, the aged, blind, and/or disabled, and people who are eligible to receive federally assisted income maintenance payments.

Medicare – The federal health insurance program for people 65 years of age or older, certain younger people with disabilities, and people with End-Stage Renal Disease (permanent kidney failure with dialysis or a transplant, sometimes called ESRD).

No Charge – Medical service for which no payment is due. Example: Free, Charity, Special Research or Teaching.

Non-covered Days – Days of care not covered by the primary payer.

Other Diagnosis Codes – The ICD-9-CM diagnosis codes corresponding to an additional condition that co-exists at the time of admission or develops subsequently, and which have an effect on the treatment or the length of stay.

Patient – An individual awaiting or under medical care and treatment.

Patient or Insured Identifier – Patient name, insured’s name, patient address or insured’s address (specially including P.O. Box or street address, but not city, 5 digit Zip Code, or State), patient control number, SSN, medical record number, health insurance claim identification number, or information that would identify or tend to identify an individual patient or insured person under whom the patient may be covered.

Payment Received – The amount the patient has paid to the provider towards this bill.

Payor Identifier – The payor name, payor identification, insured group name, insured group number, or other information that could identify a payor.

Primary Payer – An insurance policy, plans, or programs that pay first on a claim for medical care. This could be Medicare or other health insurance. The patient provides this information at the time of admission.

Principal Diagnosis – The main medical reason for admission to the hospital.

Principal Diagnosis Code – The ICD-9-CM diagnosis code describing the principal diagnosis leading to the admission (or the condition established after study to be chiefly responsible for causing this hospitalization).

Private Insurer Provider – Insurer other than Medicaid, Medicare, TRICARE. Example: Blue Cross/Blue shield, HMO, Other Insurance Companies and the Self-Insured.

Procedure – Something done to fix a health problem or to learn more about it. For example, surgery, tests, and putting in an IV (intravenous line) are procedures.

Release – A conditional distribution of hospital discharges information for purposes authorized by the statute or its corresponding rules.

Secure Information – That information which is not subject to release by OPH or any other research panel for any purpose. Secure information includes patient and insured identifiers.

Submit – To deliver, or to cause to be delivered, to the Office Of Public Health, in the form and format specified, by the close of business on the prescribed date (with respect to a submission date, and data, report, surveys, statements or documents required to be submitted to the Louisiana Office of Public Health).

TRICARE (formerly called CHAMPUS) – The government's health insurance program for members of the seven U.S. uniformed military services, including active duty members of the military, military retirees, and their eligible dependents.

Uncompensated Care – Medical services for which no payment is received. Uncompensated care includes charity care and bad debts.

Uninsured Patient – The patient who doesn’t have any insurance. He will be ether self pay or be free of charge.

Workers Compensation – Insurance or Self insurance that employers are required to carry to cover the medical expenses and lost wages of employees who became ill or are injured at work.

SOURCES:

Louisiana Register, Vol.24, No. 10, October 20, 1998

Health Care Financing Administration (www.hcfa.gov/medicare.gov/glossary)

Uniform Billing Training Manual – UB-92, Addendum B, Alphabetic listing of data elements, B1-B19.

ST11843 1PLY UB-92

1		2		3 PATIENT CONTROL NO.				4 TYPE OF BILL	
5 FED. TAX NO.		6 STATEMENT COVERS PERIOD FROM		7 COV D.	8 N-C D.	9 C-I D.	10 L-R D.	11	

12 PATIENT NAME				13 PATIENT ADDRESS			
-----------------	--	--	--	--------------------	--	--	--

14 BIRTHDATE	15 SEX	16 MS	17 DATE		ADMISSION 18 HR		19 TYPE		20 SRC		21 D HR	22 STAT	23 MEDICAL RECORD NO.			24	25	CONDITION CODES 26			27	28	29	30	31
--------------	--------	-------	---------	--	-----------------	--	---------	--	--------	--	---------	---------	-----------------------	--	--	----	----	--------------------	--	--	----	----	----	----	----

32 OCCURRENCE CODE	33 OCCURRENCE DATE	34 OCCURRENCE CODE	35 OCCURRENCE DATE	36 OCCURRENCE CODE	37 OCCURRENCE SPAN FROM	38	39	40	41	42	43	44	45	46	47	48	49
--------------------	--------------------	--------------------	--------------------	--------------------	-------------------------	----	----	----	----	----	----	----	----	----	----	----	----

39 CODE	VALUE CODES AMOUNT	40 CODE	VALUE CODES AMOUNT	41 CODE	VALUE CODES AMOUNT
a
b
c
d

42 REV. CD.	43 DESCRIPTION	44 HCPCS / RATES	45 SERV. DATE	46 SERV. UNIT	47 CHARGES	48 NON-COVERED CHARGES	49
1							
2							
3							
4							
5							
6							
7							
8							
9							
10							
11							
12							
13							
14							
15							
16							
17							
18							
19							
20							
21							
22							
23							

50 PAYER		51 PROVIDER NO.		52 REL INFO	53 ASG BEN	54 PRIOR PAYMENTS		55 EST. AMOUNT DUE		56
A		B		C	D	E		F		G

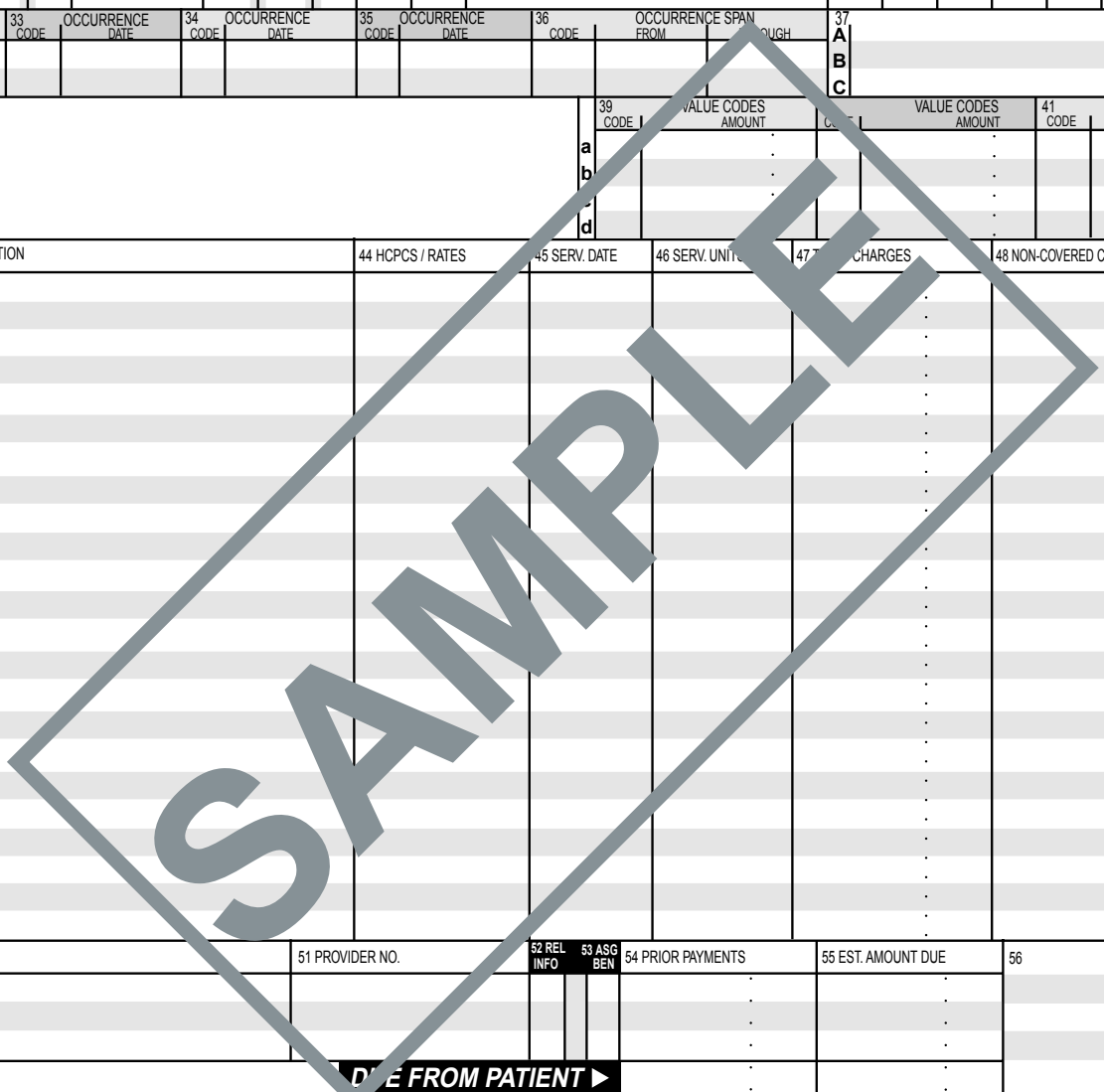
57		58 INSURED'S NAME		59 P. REL		60 CERT. - SSN - HIC. - ID NO.		61 GROUP NAME		62 INSURANCE GROUP NO.	
A		B		C		D		E		F	

63 TREATMENT AUTHORIZATION CODES		64 ESC	65 EMPLOYER NAME		66 EMPLOYER LOCATION	
A		B	C		D	

67 PRIN. DIAG. CD.	68 CODE	69 CODE	70 CODE	71 CODE	72 CODE	73 CODE	74 CODE	75 CODE	76 ADM. DIAG. CD.	77 E-CODE	78
--------------------	---------	---------	---------	---------	---------	---------	---------	---------	-------------------	-----------	----

79 P.C.	80 PRINCIPAL PROCEDURE CODE DATE		81 OTHER PROCEDURE CODE DATE		82 ATTENDING PHYS. ID	
A	B		C		D	
E	F		G		H	

84 REMARKS		85 PROVIDER REPRESENTATIVE		86 DATE	
a		b		c	



UNIFORM BILL:**NOTICE: ANYONE WHO MISREPRESENTS OR FALSIFIES ESSENTIAL INFORMATION REQUESTED BY THIS FORM MAY UPON CONVICTION BE SUBJECT TO FINE AND IMPRISONMENT UNDER FEDERAL AND/OR STATE LAW.**

Certifications relevant to the Bill and Information Shown on the Face Hereof: Signatures on the face hereof incorporate the following certifications or verifications where pertinent to this Bill:

1. If third party benefits are indicated as being assigned or in participation status, on the face thereof, appropriate assignments by the insured/ beneficiary and signature of patient or parent or legal guardian covering authorization to release information are on file. Determinations as to the release of medical and financial information should be guided by the particular terms of the release forms that were executed by the patient or the patient's legal representative. The hospital agrees to save harmless, indemnify and defend any insurer who makes payment in reliance upon this certification, from and against any claim to the insurance proceeds when in fact no valid assignment of benefits to the hospital was made.
2. If patient occupied a private room or required private nursing for medical necessity, any required certifications are on file.
3. Physician's certifications and re-certifications, if required by contract or Federal regulations, are on file.
4. For Christian Science Sanitoriums, verifications and if necessary re-verifications of the patient's need for sanitorium services are on file.
5. Signature of patient or his/her representative on certifications, authorization to release information, and payment request, as required be Federal law and regulations (42 USC 1935f, 42 CFR 424.36, 10 USC 1071 thru 1086, 32 CFR 199) and, any other applicable contract regulations, is on file.
6. This claim, to the best of my knowledge, is correct and complete and is in conformance with the Civil Rights Act of 1964 as amended. Records adequately disclosing services will be maintained and necessary information will be furnished to such governmental agencies as required by applicable law.
7. For Medicare purposes:

If the patient has indicated that other health insurance or a state medical assistance agency will pay part of his/her medical expenses and he/she wants information about his/her claim released to them upon their request, necessary authorization is on file. The patient's signature on the provider's request to bill Medicare authorizes any holder of medical and non-medical information, including employment status, and whether the person has employer group health insurance, liability, no-fault, workers' compensation, or other insurance which is responsible to pay for the services for which this Medicare claim is made.

8. For Medicaid purposes:

This is to certify that the foregoing information is true, accurate, and complete.

I understand that payment and satisfaction of this claim will be from Federal and State funds, and that any false claims, statements, or documents, or concealment of a material fact, may be prosecuted under applicable Federal or State Laws.

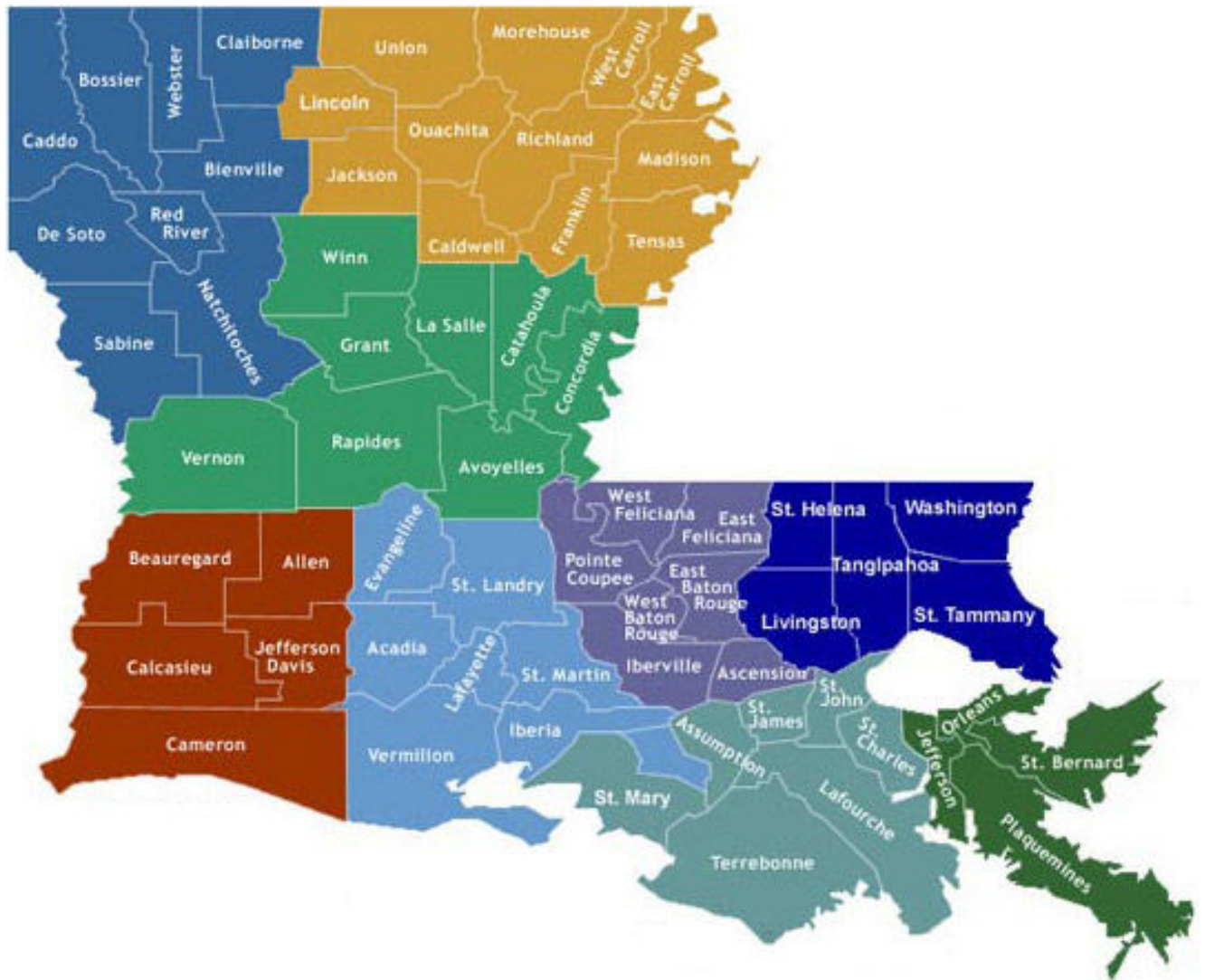
9. For CHAMPUS purposes:

This is to certify that:

- (a) the information submitted as part of this claim is true, accurate and complete, and, the services shown on this form were medically indicated and necessary for the health of the patient;
- (b) the patient has represented that by a reported residential address outside a military treatment center catchment area he or she does not live within a catchment area of a U.S. military or U.S. Public Health Service medical facility, or if the patient resides within a catchment area of such a facility, a copy of a Non-Availability Statement (DD Form 1251) is on file, or the physician has certified to a medical emergency in any assistance where a copy of a Non-Availability Statement is not on file;
- (c) the patient or the patient's parent or guardian has responded directly to the provider's request to identify all health insurance coverages, and that all such coverages are identified on the face the claim except those that are exclusively supplemental payments to CHAMPUS-determined benefits;
- (d) the amount billed to CHAMPUS has been billed after all such coverages have been billed and paid, excluding Medicaid, and the amount billed to CHAMPUS is that remaining claimed against CHAMPUS benefits;
- (e) the beneficiary's cost share has not been waived by consent or failure to exercise generally accepted billing and collection efforts; and,
- (f) any hospital-based physician under contract, the cost of whose services are allocated in the charges included in this bill, is not an employee or member of the Uniformed Services. For purposes of this certification, an employee of the Uniformed Services is an employee, appointed in civil service (refer to 5 USC 2105), including part-time or intermittent but excluding contract surgeons or other personnel employed by the Uniformed Services through personal service contracts. Similarly, member of the Uniformed Services does not apply to reserve members of the Uniformed Services not on active duty.
- (g) based on the Consolidated Omnibus Budget Reconciliation Act of 1986, all providers participating in Medicare must also participate in CHAMPUS for inpatient hospital services provided pursuant to admissions to hospitals occurring on or after January 1, 1987.
- (h) if CHAMPUS benefits are to be paid in a participating status, I agree to submit this claim to the appropriate CHAMPUS claims processor as a participating provider. I agree to accept the CHAMPUS-determined reasonable charge as the total charge for the medical services or supplies listed on the claim form. I will accept the CHAMPUS-determined reasonable charge even if it is less than the billed amount, and also agree to accept the amount paid by CHAMPUS, combined with the cost-share amount and deductible amount, if any, paid by or on behalf of the patient as full payment for the listed medical services or supplies. I will make no attempt to collect from the patient (or his or her parent or guardian) amounts over the CHAMPUS-determined reasonable charge. CHAMPUS will make any benefits payable directly to me, if I submit this claim as a participating provider.

ESTIMATED CONTRACT BENEFITS

Louisiana Region & Parish Map



- | | | | |
|---|----------|--|----------|
|  | Region 8 |  | Region 5 |
|  | Region 7 |  | Region 4 |
|  | Region 6 |  | Region 3 |
|  | Region 2 |  | Region 1 |
|  | Region 9 | | |

Notes



This public document was published at a total cost of \$2838.30. Three hundred copies of this document were printed for the Louisiana Department of Health and Hospitals by Louisiana State University Health Sciences Center, Auxiliary Enterprises, Duplating and Graphics, 1500 Perdido, New Orleans, LA. This document was printed in accordance with standards for printing by State Agencies established pursuant to R.S.43:31.