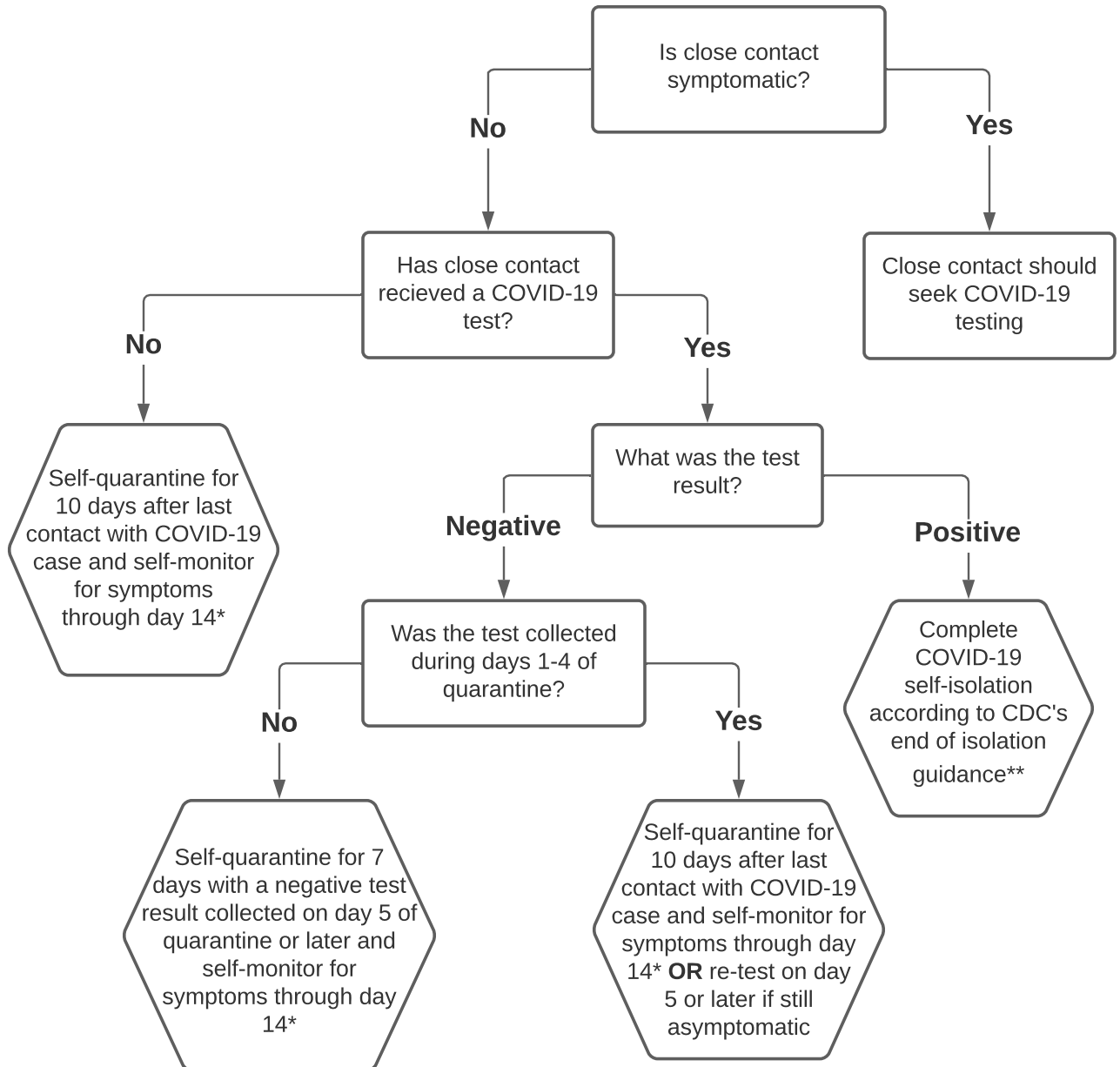


LDH Interim Guidance on Optional Shortened Quarantine for Close Contacts of COVID-19 Cases in Community (non-congregate living) Settings

The below flowchart describes options to shorten quarantine, however, 14 days is still the optimal quarantine period for minimizing the transmission of COVID-19. OPH recommends use of the 14-day quarantine period in situations where exemptions to Louisiana's mask mandate are allowed, including but not limited to, daycares and other school settings where masking among children is not maintained.



*If quarantine is shortened, daily symptoms monitoring and strict adherence to prevention measures including social distancing, hand washing, and especially wearing masks/face covering, should continue until the full 14 days from last contact with a COVID-19 case. Close contacts who develop symptoms on or before day 14 after their last exposure to a COVID-19 case are considered suspect cases regardless of meeting criteria for a shortened quarantine and should self-isolate immediately.

** <https://www.cdc.gov/coronavirus/2019-ncov/if-you-are-sick/end-home-isolation.html>