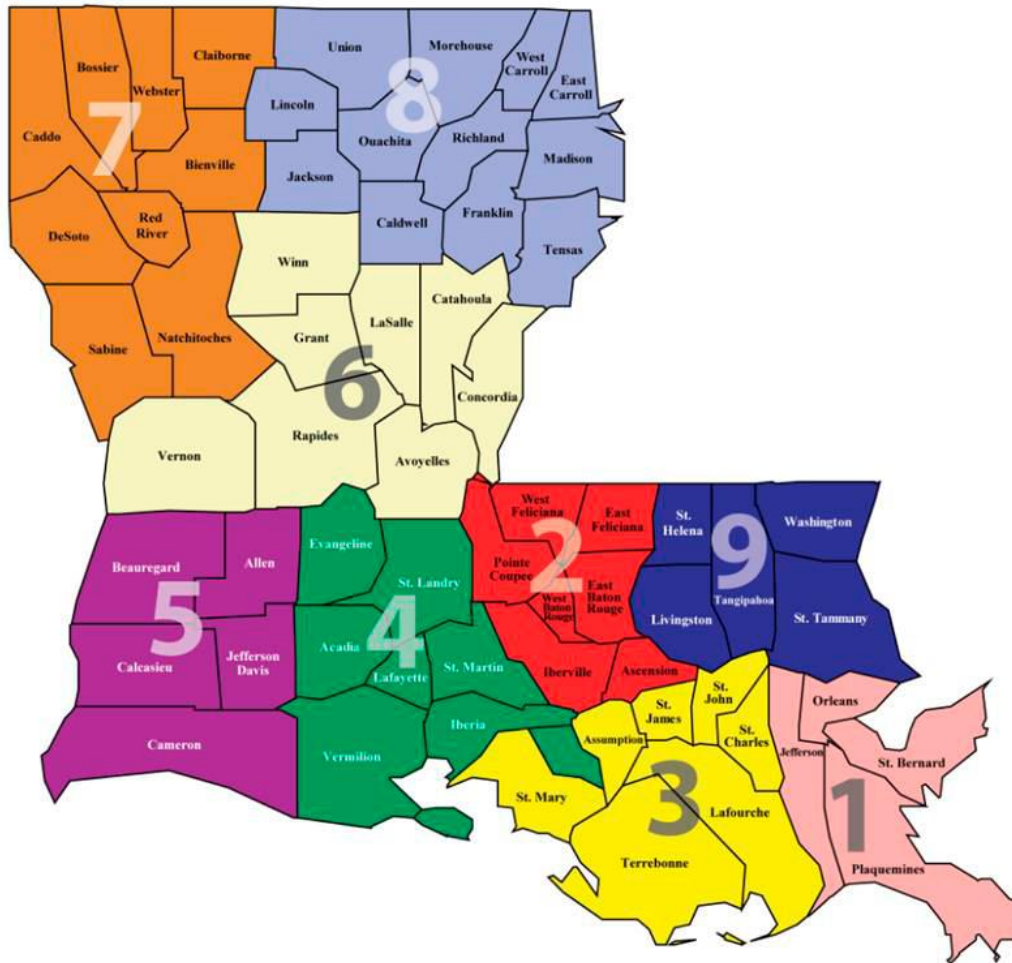


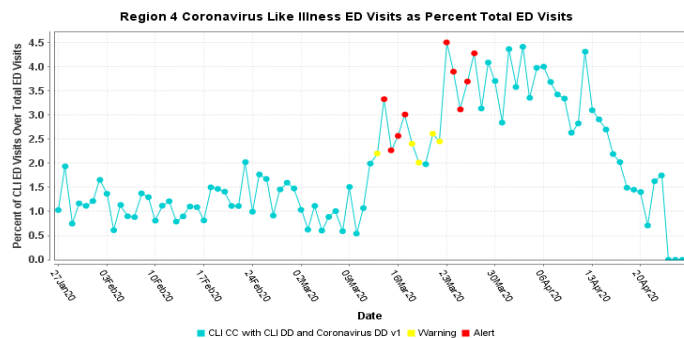
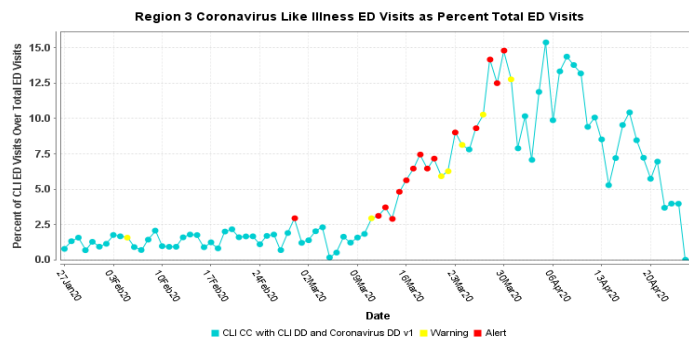
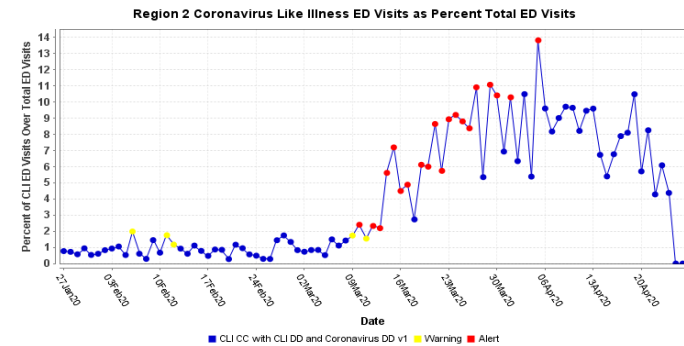
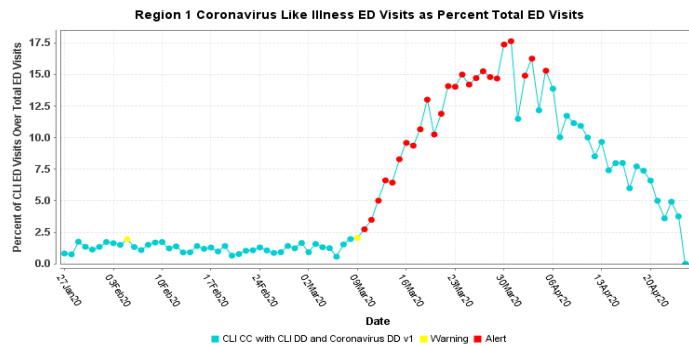
**CRITERION 1:
SUSTAINED
DECLINE IN
COVID-LIKE
ILLNESSES**

LDH REGIONS



- Region 1 – New Orleans
- Region 2 – Baton Rouge
- Region 3 – South Central
- Region 4 – Acadiana
- Region 5 – Southwest
- Region 6 – Central
- Region 7 – Shreveport/Bossier
- Region 8 – Monroe
- Region 9 - Northshore

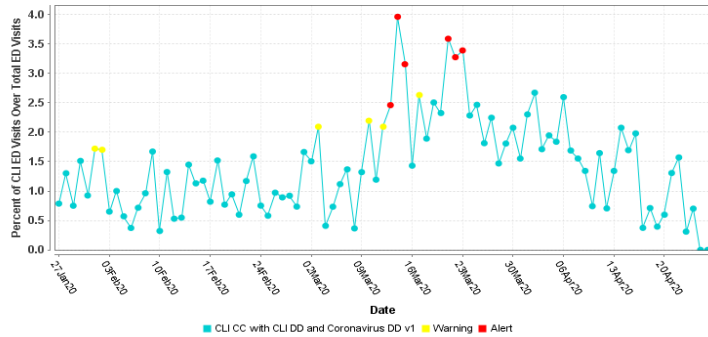
COVID-LIKE ILLNESSES DECREASING



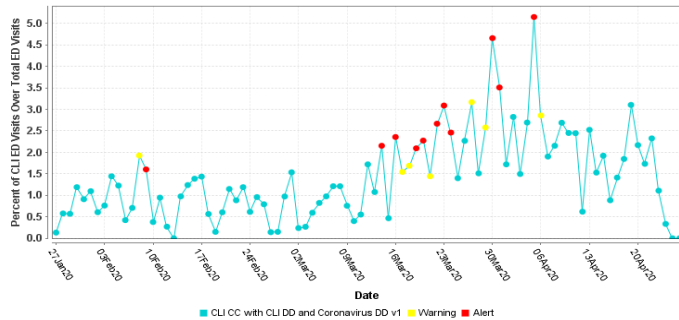
Includes cases reported through April 24

COVID-LIKE ILLNESSES DECREASING

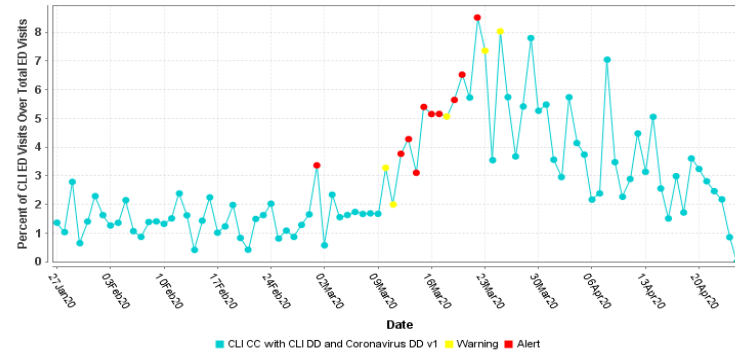
Region 5 Coronavirus Like Illness ED Visits as Percent Total ED Visits



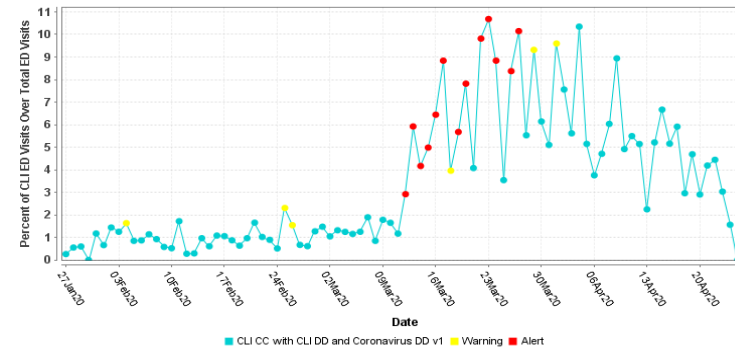
Region 7 Coronavirus Like Illness ED Visits as Percent Total ED Visits



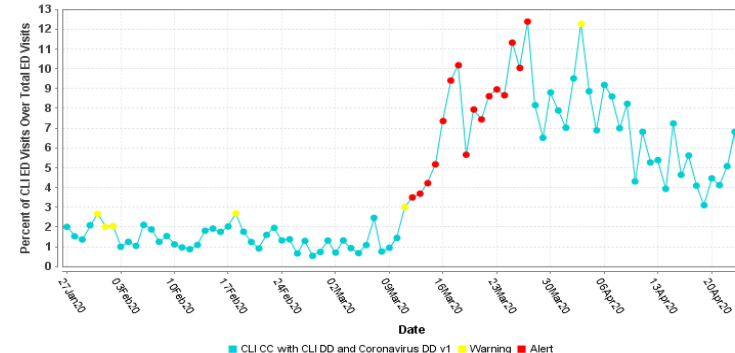
Region 6 Coronavirus Like Illness ED Visits as Percent Total ED Visits



Region 8 Coronavirus Like Illness ED Visits as Percent Total ED Visits



Region 9 Coronavirus Like Illness ED Visits as Percent Total ED Visits



Includes cases reported through April 24

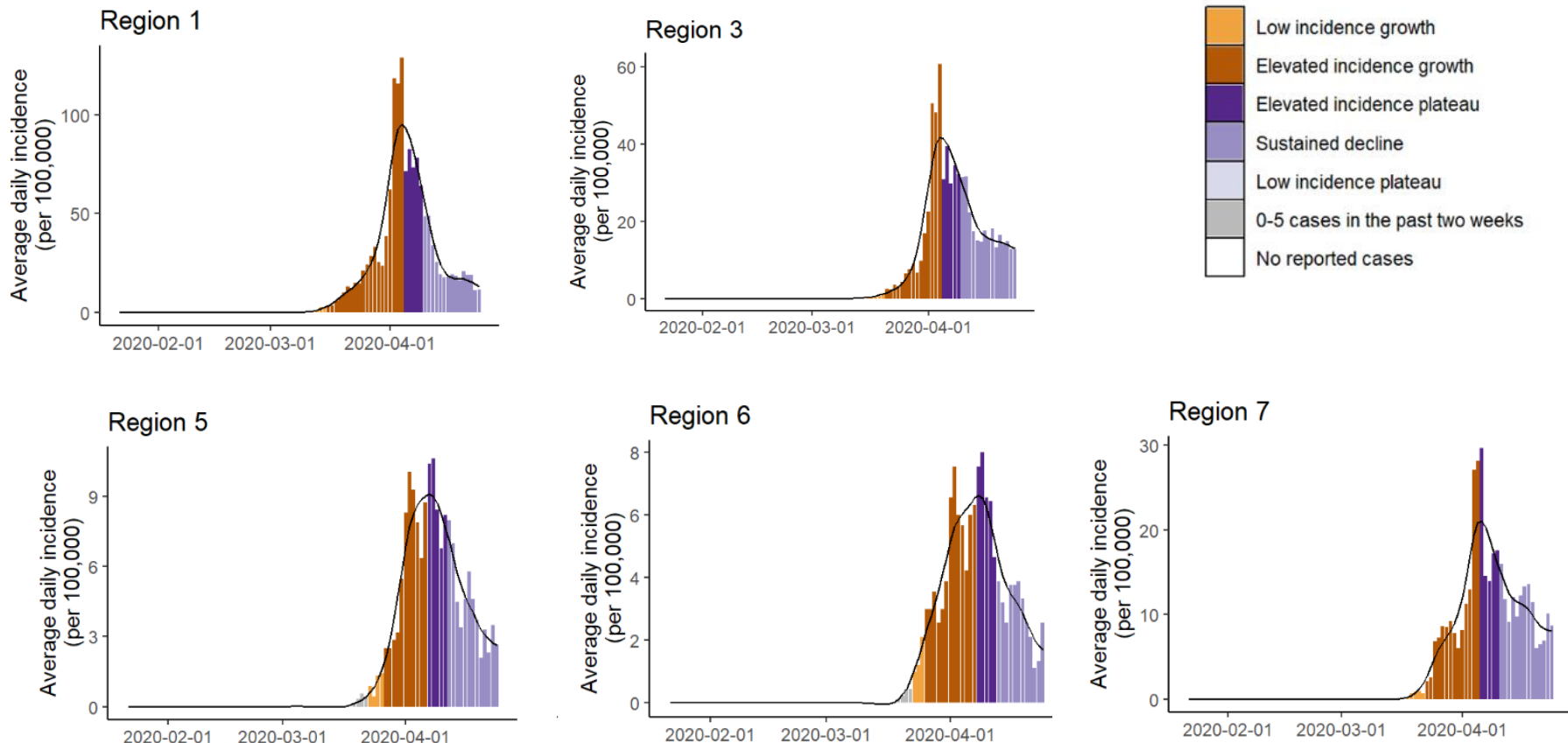
CRITERION 2: SUSTAINED CASE DECLINE

EPI CURVES

- These specific CDC Epi Curves calculate the 3-day moving average of daily changes in incidence (of infection) per 100,000 people.
- Each column represents the day-to-day difference in the 3-day average and is then color-coded based on the slope and low or high incidence.
- To learn more about Epi Curves visit:
<https://www.cdc.gov/training/quicklearns/createeepi/1.html>

DECREASING

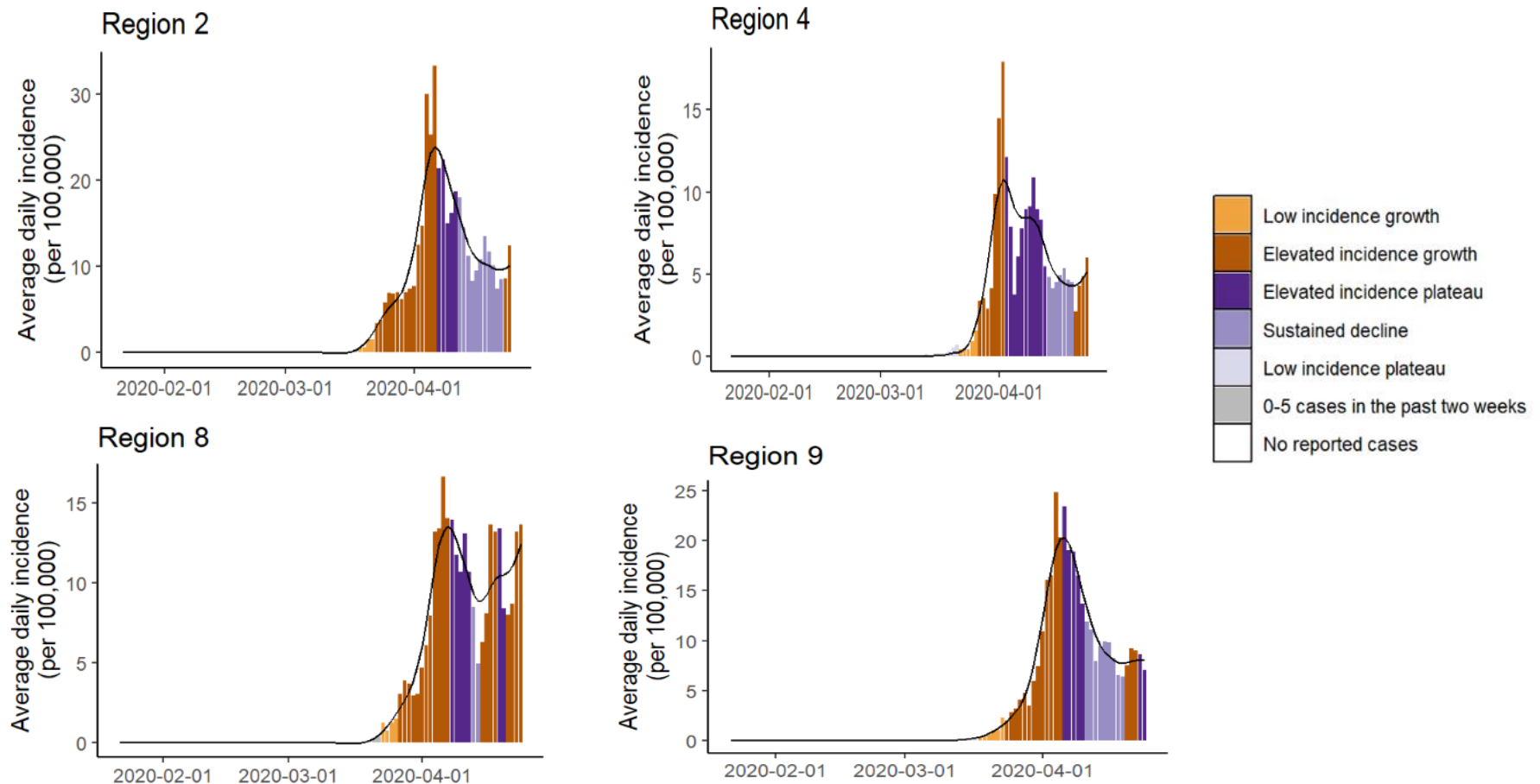
Decreased incidence growth in Regions 1,3,5,6 and 7.



Includes cases reported through April 24

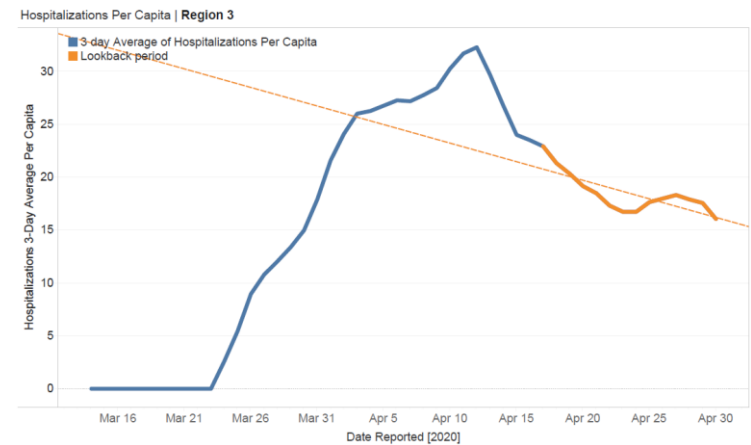
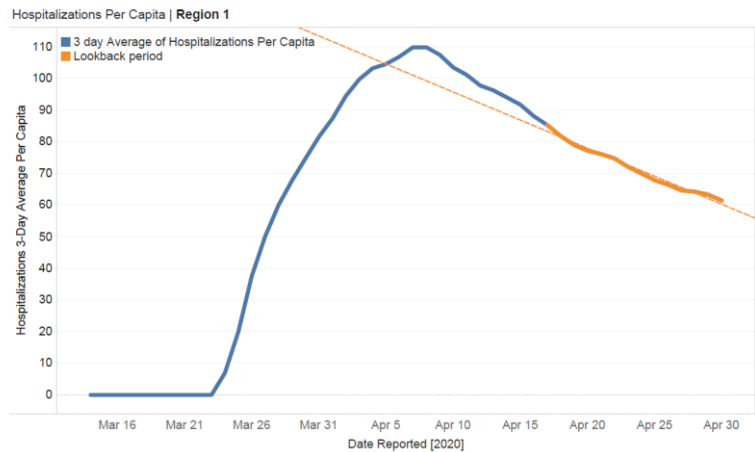
INCREASING OR PLATEAUING

Elevated incidence growth in Regions 2, 4 and 8. Region 9 has reached an elevated incidence plateau.

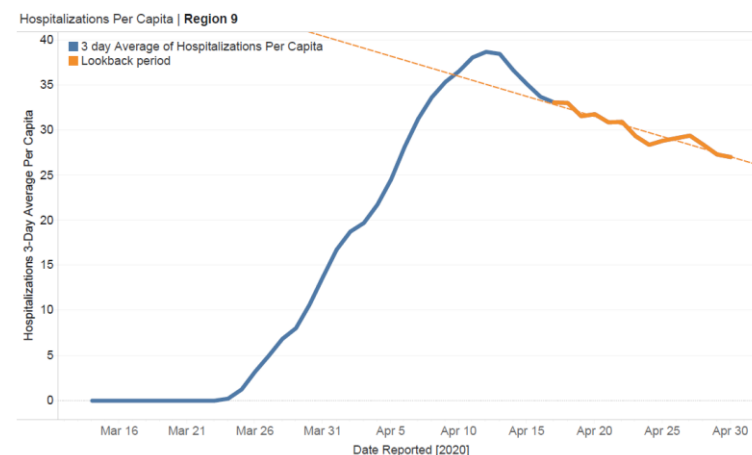
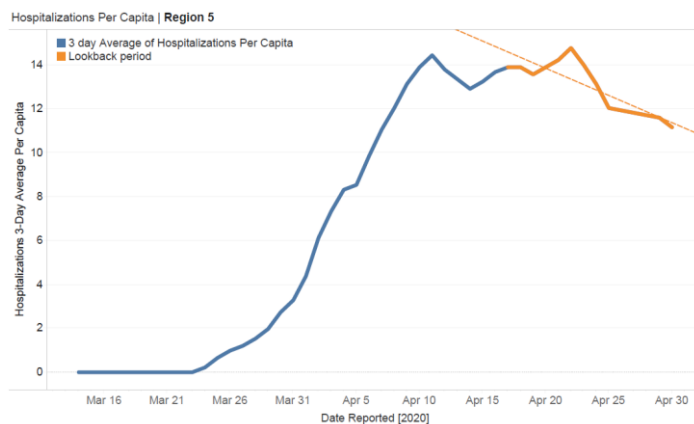


**CRITERION 3:
DECREASE IN
HOSPITALIZATION**

HOSPITALIZATIONS PER CAPITA DECREASING

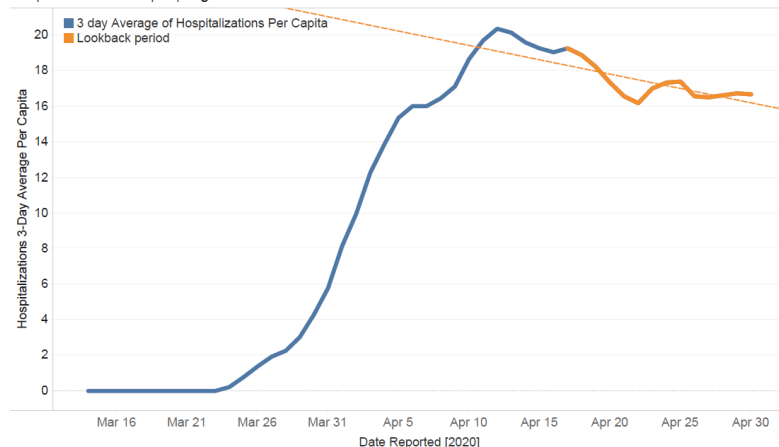


HOSPITALIZATIONS PER CAPITA DECREASING

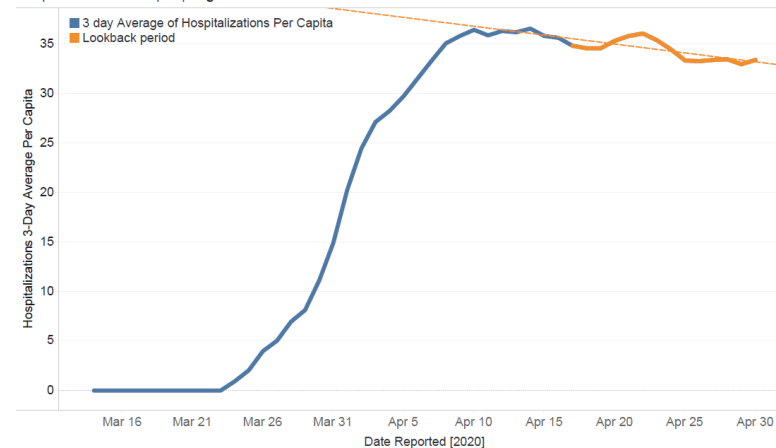


HOSPITALIZATIONS PER CAPITA DECREASING

Hospitalizations Per Capita | Region 4

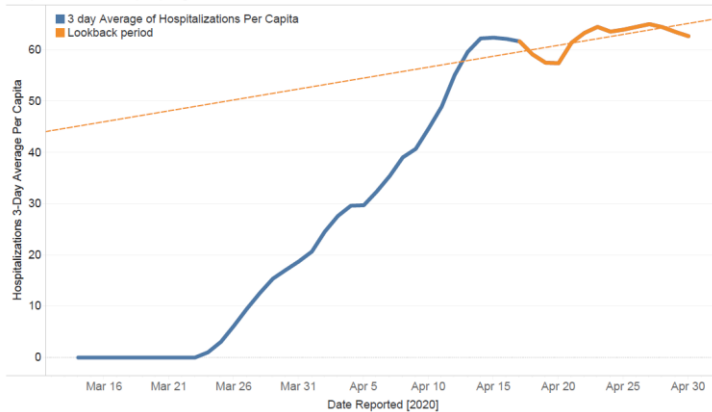


Hospitalizations Per Capita | Region 7

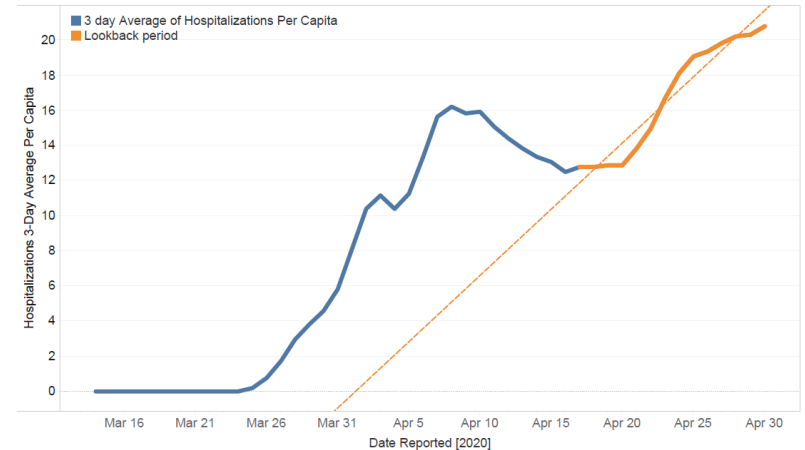


HOSPITALIZATIONS PER CAPITA INCREASING OR PLATEAUING

Hospitalizations Per Capita | Region 2



Hospitalizations Per Capita | Region 8



Hospitalizations Per Capita | Region 6

