

Louisiana HIV, AIDS, and Early Syphilis Surveillance

Quarterly Report

December 31, 2017



Louisiana Department of Health
Office of Public Health
STD/HIV Program (SHP)
1450 Poydras Street, Suite 2136
New Orleans, Louisiana 70112
504.568.7474
haprequest@la.gov
<http://dhh.louisiana.gov/hiv>
www.lahhub.org

Louisiana Department of Health
Office of Public Health
STD/HIV Surveillance Program

DeAnn Gruber, PhD, LCSW
Bureau of Infectious Disease Director

Chaquetta Johnson, DNP, MPH
Deputy Program Director

Debbie Wendell, PhD, MPH
Data Management/Analysis Manager

Jessica Fridge, MSPH
Surveillance Program Manager

Javone Charles, MPH
Regional Operations Manager

Stephanie Taylor, MD
STD Medical Director

Joy Ewell
CDC Lead PHA-Louisiana

Editor/Production:

Lauren Ostrenga, MPH
Catherine Desmarais, DrPH

Data Management/Analysis and Surveillance:

Lauren Ostrenga, MPH, *HIV Surveillance Epidemiologist*

Tania Bechtel, *Laboratory Surveillance Supervisor*

Antoine Brantley, MPH, *Data Analyst*

Lakeesha Brumfield, *HIV Data Entry Specialist*

Catherine Desmarais, DrPH, *STD Surveillance Epidemiologist and Data Manager*

Ashley Hoover, *STD/HIV Perinatal Surveillance Supervisor*

Mohammad Rahman, MBBS, MPH, PhD, *CDC Epidemiologist*

Denise Robertson, *ICCR Coordinator*

William T. Robinson, PhD, *Biostatistician*

Josette Russell, *HIV Data Entry Specialist*

Molly Votaw, MPH, *HIV Surveillance Data Management Supervisor*

Carmen Washington, *HIV Data Entry Specialist*

HIV Field Epidemiologists:

Susan Brodie, MT(ASCP), MSPH, *Field Epidemiologist Supervisor*

James Hubbard, *Region 1*

Tarsia Williams, *Regions 1 & 3*

Gale Terry, LPN, *Regions 2 & 9*

Cheryl Edney, BS MT(ASCP), *Regions 4, 5, & 6*

Gayle Norris, MA, *Regions 7 & 8*

Regional STD Supervisors:

Michael Carter, *Region 1*

Gerald Dean Scott, *Region 2*

Javone Charles, *Region 3 & 9*

Ken May, *Region 4*

Patrick Williams, *Region 5 & 6*

Charles Jones, *Region 7*

Crissey Brown, *Region 8*

TABLE OF CONTENTS

Contents	Page
Surveillance Summary	1
Abbreviations	3
Louisiana: Persons Living with HIV Infection	4
Persons newly diagnosed with HIV	6
Persons newly diagnosed with AIDS	7
Persons diagnosed with Primary and Secondary Syphilis	8
Persons diagnosed with Early Latent Syphilis	9
Parish: Persons Living with HIV Infection	10
Persons diagnosed with Early Syphilis	11
Metro New Orleans: Persons Living with HIV Infection	12
Persons newly diagnosed with HIV and AIDS	14
Persons diagnosed with Early Syphilis	15
Metro Baton Rouge: Persons Living with HIV Infection	16
Persons newly diagnosed with HIV and AIDS	18
Persons diagnosed with Early Syphilis	19
Public Health Regions: Map & HIV/AIDS Counts	20
Region 1: Persons Living with HIV Infection	21
Region 2: Persons Living with HIV Infection	22
Region 3: Persons Living with HIV Infection	23
Region 4: Persons Living with HIV Infection	24
Region 5: Persons Living with HIV Infection	25
Region 6: Persons Living with HIV Infection	26
Region 7: Persons Living with HIV Infection	27
Region 8: Persons Living with HIV Infection	28
Region 9: Persons Living with HIV Infection	29
Regions 1-5: Persons newly diagnosed with HIV	30
Regions 6-9: Persons newly diagnosed with HIV	31
Regions 1-5: Persons newly diagnosed with AIDS	32
Regions 6-9: Persons newly diagnosed with AIDS	33
Regions 1-5: Persons diagnosed with Primary and Secondary Syphilis	34
Regions 6-9: Persons diagnosed with Primary and Secondary Syphilis	35
Regions 1-5: Persons diagnosed with Early Latent Syphilis	36
Regions 6-9: Persons diagnosed with Early Latent Syphilis	37
 List of Figures	
Louisiana: 10-Year Trends Persons Living with HIV Infection (2007-2016)	5
Louisiana: 10-Year Trends New HIV Diagnoses (2007-2016)	6
Louisiana: 10-Year Trends New AIDS Diagnoses (2007-2016)	7
Louisiana: 10-Year Trends P&S Syphilis Diagnoses (2007-2016)	8
Louisiana: 8-Year Trends Early Latent Syphilis Diagnoses (2009-2016)	9
 Surveillance Breakout	
2018 National Women and Girls HIV/AIDS Awareness Day Factsheet	38

Surveillance Summary

Data in this report includes cases diagnosed with HIV, AIDS, or Early Syphilis

- In 2016, Louisiana ranked **3rd** in the nation for HIV case rates (24.6 per 100,000 population) and **8th** in the estimated number of HIV cases. The Baton Rouge MSA ranked **3rd** and the New Orleans MSA ranked **2nd** for HIV case rates (30.2 and 33.3 per 100,000, respectively), among the large metropolitan areas in the nation. The most recent *CDC HIV Surveillance Report* (vol. 28) was released in November 2017 and provided the 2016 rankings.
- According to the same report, Louisiana ranked **2nd** highest in state AIDS case rates (12.0 per 100,000) and **9th** in the number of estimated AIDS cases in 2016. The Baton Rouge metropolitan area ranked **1st** in AIDS case rates (18.0 per 100,000) and the New Orleans metropolitan area ranked **4th** in AIDS case rates (14.1 per 100,000) in 2016 among the large metropolitan areas in the nation.
- In 2016, Louisiana ranked **1st** in the nation for primary and secondary (P&S) syphilis case rates (16.0 per 100,000 population) according to the 2016 *CDC STD Surveillance Report*.
- As of December 31, 2017, a total of **21,784** persons were living with HIV infection (PLWH) in Louisiana; of these individuals, **11,156** persons (51%) have an AIDS diagnosis.
- In 2016, **1,128** new HIV cases were diagnosed in Louisiana. Of these cases, **31%** (n=352) occurred in Region 1 (New Orleans) and **20%** (n=231) occurred in Region 2 (Baton Rouge).
- As of December 31, 2017, a total of **1,220** persons were diagnosed with early syphilis* in Louisiana; **637** persons were diagnosed with P&S syphilis, and **583** persons were diagnosed with early latent syphilis. Of the total early syphilis cases, **32%** (n=385) occurred in Region 1 (New Orleans) and **14%** (n=176) occurred in Region 7 (Shreveport).
- The primary risk factor for new HIV diagnoses in Louisiana is men who have sex with men (MSM). In 2016, of the persons who reported a risk factor, **56%** reported being MSM, and an additional **2%** reported being MSM and an injection drug user (IDU). As of December 31, 2017, **47%** of all people living with HIV infection in Louisiana were MSM.
- The primary risk factor for early syphilis diagnoses in Louisiana is heterosexual contact. As of December 31, 2017, of the persons who reported a risk factor, **55%** reported engaging in heterosexual activity, and **52%** reported being MSM. *Persons could report multiple risk factors for syphilis diagnoses.*
- In Louisiana, **71%** of new HIV cases, **67%** of new AIDS cases, and **71%** of the early syphilis diagnoses were among men.
- African Americans in Louisiana are experiencing a severe health disparity in regards to HIV and STDs. In 2016, **73%** of newly diagnosed HIV cases and **74%** of newly diagnosed AIDS cases were among African Americans. In 2017, **69%** of early syphilis cases were among African Americans. African Americans make up only 32% of Louisiana's overall population.
- A large percentage of new HIV and syphilis diagnoses occurred among adolescents and young adults. In 2016, **25%** of all new HIV diagnoses occurred among persons 13-24 years old and an additional **34%** occurred among persons 25-34 years old. In 2017, **32%** of all early syphilis diagnoses occurred among persons 13-24 years old and an additional **43%** occurred among persons 25-34 years old.

* A syphilis diagnosis with less than one year duration is considered to be "early syphilis." This designation covers the primary, secondary, and early latent stages of syphilis.

New Quarterly Report Format:

The format of the Quarterly Report has been redesigned starting Third Quarter 2017. Besides for the removal of cumulative HIV/AIDS cases and cumulative HIV/AIDS deaths by state and region, the core content of the Quarterly Report remains the same with some new modifications described below.

In efforts to more accurately present the data as it relates to gender identity, tables for persons living with HIV infection now include race/ethnicity and exposure category stratified by current gender identity (men, women, transgender women, & transgender men) rather than sex at birth.

In addition, there are three new HIV/AIDS exposure categories: “Transwomen- sex with men,” “Transwomen- sex with men/injection drug user (IDU),” and “Female presumed heterosexual contact” (FPHC). In previous versions of the Quarterly Report, transgender women who indicated engaging in sex with men would have their HIV exposure classified as “Men who has sex with men” (MSM) or “MSM/IDU.” The new exposure categories going forward (“Transwomen- sex with men” & “Transwomen- sex with men/IDU”) acknowledge and highlight the differences in gender identity between gay and bisexual men versus transgender women as well as strive to better describe the populations affected by HIV in Louisiana.

In previous Quarterly Reports, a significant number of HIV-positive women who did not meet the stringent “high risk” criteria for “Heterosexual contact” were classified as “No identified risk.” In an effort to better capture and present heterosexual transmission of HIV among women, the STD/HIV Program has used an algorithm from the Centers for Disease Control that re-categorizes many women formerly classified as “No identified risk” as now meeting the exposure criteria for FPHC. The primary criteria for FPHC includes: sex at birth is female, answered ‘yes’ to sex with men, answered ‘no’ to injection drug use, and has no other documentation that would suggest an alternative mode of HIV infection.

Time Periods for this Quarterly Report (Fourth Quarter 2017 Report):

Persons Living with HIV Infection – As of December 31, 2017

New HIV Diagnoses – Calendar Year 2016 (Updated from 3rd Quarter Report)

New AIDS Diagnoses – Calendar Year 2016 (Updated from 3rd Quarter Report)

New P&S Syphilis Diagnoses – January 1 to December 31, 2017 (Calendar Year 2017)

New Early Latent Syphilis Diagnoses – January 1 to December 31, 2017 (Calendar Year 2017)

Future Quarterly Report:

First Quarter 2018 Report: Release in May 2018

Persons Living with HIV Infection, As of March 31, 2018

HIV and AIDS Diagnoses, Calendar Year 2017

P&S Syphilis and Early Latent Syphilis Diagnoses, First Quarter 2018 (January-March 2018)

Abbreviations

Asian/PI	Asian/Pacific Islander
FPHC	Female presumed heterosexual contact
HRH	High risk heterosexual contact
IDU	Injection drug user
MSM	Men who have sex with men
MSM/IDU	Men who have sex with men and injection drug user
NH	Non-Hispanic
PLWH	Persons living with HIV
P&S	Primary and secondary syphilis

**Persons Living with HIV Infection
Louisiana
as of December 31, 2017**

21,784 persons are currently living with HIV/AIDS in Louisiana.

Number of persons living with HIV: **10,628**

Number of persons living with AIDS: **11,156**

	No.	%
Gender		
Men	15,273	70.1
Women	6,267	28.8
Transgender women	243	1.1
Transgender men	1	0.0
Current Age		
0-12	45	0.2
13-19	140	0.6
20-24	908	4.2
25-29	2,013	9.2
30-34	2,342	10.8
35-39	2,537	11.6
40-44	2,488	11.4
45-49	2,668	12.2
50-54	2,982	13.7
55-59	2,621	12.0
60+	3,040	14.0
Total	21,784	100.0

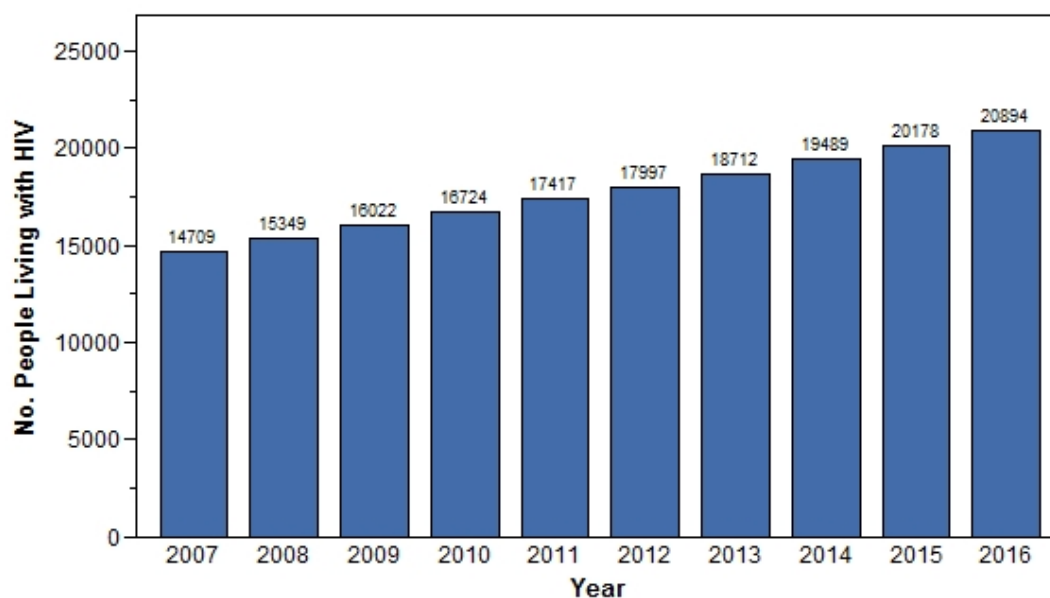
	Men		Women		Transgender women		Transgender men		LA State Totals	
	No.	%	No.	%	No.	%	No.	%	No.	%
Race/Ethnicity										
American Indian	32	0.2	11	0.2	-	-	-	-	43	0.2
Asian/PI	71	0.5	16	0.3	2	0.8	-	-	89	0.4
Black, NH	9,581	62.7	5,120	81.7	200	82.3	1	100.0	14,902	68.4
Hispanic/Latinx	805	5.3	183	2.9	14	5.8	-	-	1,002	4.6
Multi-race	104	0.7	37	0.6	2	0.8	-	-	143	0.7
White, NH	4,674	30.6	899	14.3	25	10.3	-	-	5,598	25.7
Unknown	6	0.0	1	0.0	-	-	-	-	7	0.0
Total	15,273	100.0	6,267	100.0	243	100.0	1	100.0	21,784	100.0

**Persons Living with HIV Infection
Louisiana
as of December 31, 2017**

Exposure Category	Men		Women		Transgender women		LA State Totals	
	No.	%	No.	%	No.	%	No.	%
MSM	8,125	72.0	-	-	-	-	8,125	47.4
Transwomen - sex with men	-	-	-	-	210	89.0	210	1.2
MSM/IDU	828	7.3	-	-	-	-	828	4.8
Transwomen - sex with men/IDU	-	-	-	-	25	10.6	25	0.1
IDU	1,002	8.9	631	11.2	-	-	1,633	9.5
HRH	1,199	10.6	2,605	46.2	1	0.4	3,805	22.2
FPHC	-	-	2,257	40.1	-	-	2,257	13.2
Transfusion/Hemophilia	35	0.3	30	0.5	-	-	65	0.4
Perinatal	95	0.8	109	1.9	-	-	204	1.2
Confirmed Other	-	-	1	0.0	-	-	1	0.0
Total	11,284	100.0	5,633	100.0	236	100.0	17,153	100.0

	<i>Men</i>	<i>Women</i>	<i>Transgender women</i>	<i>Transgender men</i>	<i>Total</i>
No Reported Risk	3,989	634	7	1	4,631

**10-Year Trends in Persons Living with HIV Infection
Louisiana, 2007-2016**



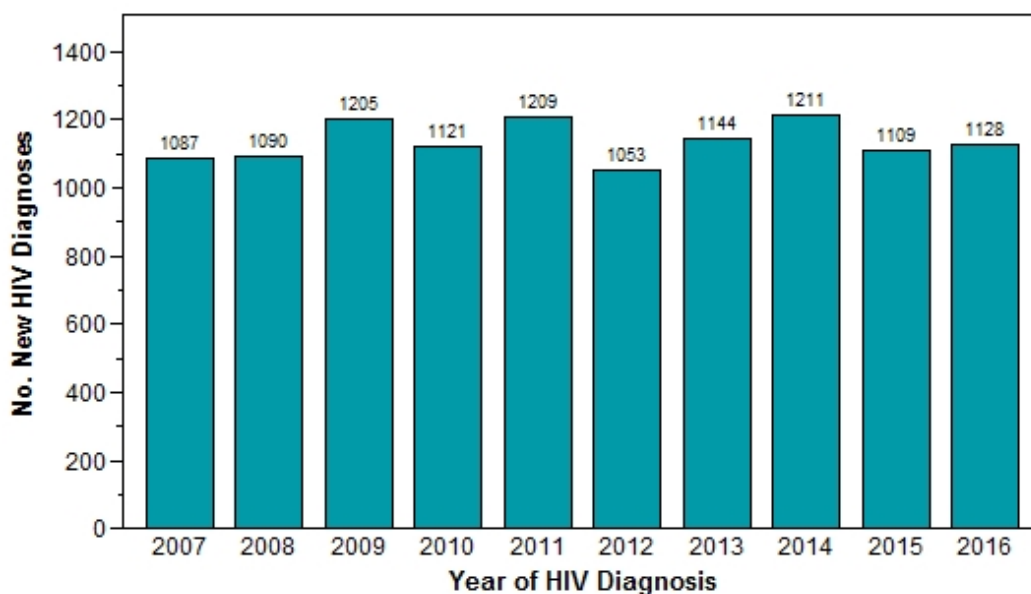
Persons Newly Diagnosed with HIV Louisiana, January - December 2016

In 2016, **1,128** persons were newly diagnosed with HIV in Louisiana.

	No.	%		No.	%
Gender			Exposure Category		
Men	803	71.2	MSM	473	55.6
Women	302	26.8	Transwomen - sex with men	23	2.7
Transgender women	23	2.0	MSM/IDU	17	2.0
Age at Diagnosis			IDU	33	3.9
0-12	2	0.2	HRH	168	19.8
13-24	279	24.7	FPHC	134	15.8
25-34	384	34.0	Perinatal	2	0.2
35-44	224	19.9	Total	850	100.0
45+	239	21.2			
Race/Ethnicity					
American Indian	2	0.2			
Asian/PI	3	0.3			
Black, NH	821	72.8			
Hispanic/Latinx	64	5.7			
Multi-race	3	0.3			
White, NH	235	20.8			
Total	1,128	100.0			

No Reported Risk 278

10-Year Trends in New HIV Diagnoses Louisiana, 2007-2016



Persons Newly Diagnosed with AIDS Louisiana, January - December 2016

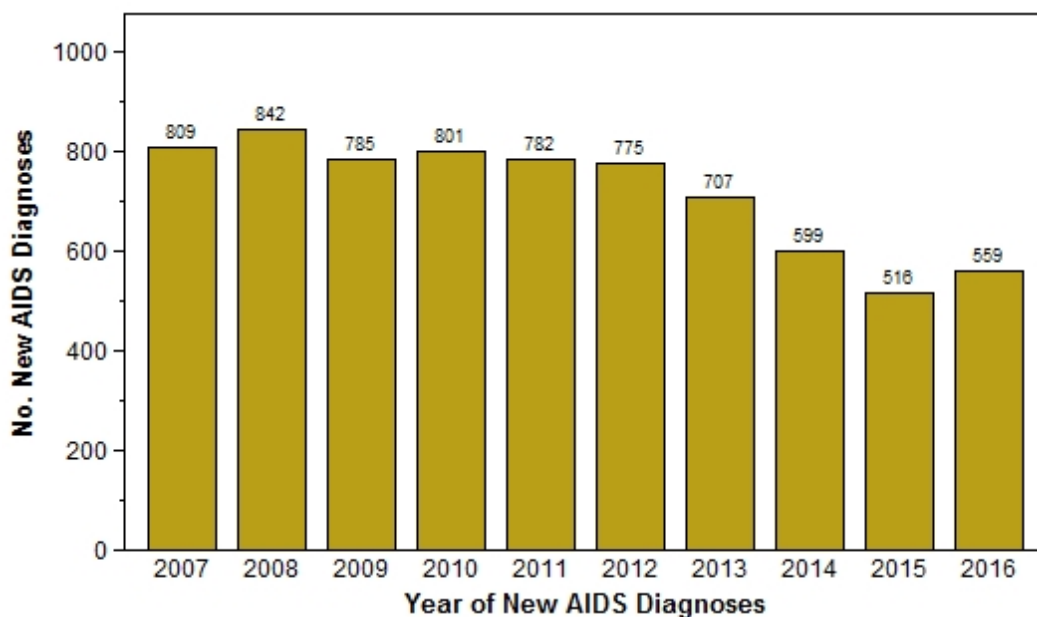
In 2016, **559** persons were newly diagnosed with AIDS in Louisiana.

	No.	%
Gender		
Men	376	67.3
Women	176	31.5
Transgender women	7	1.3
Age at Diagnosis		
0-12	1	0.2
13-24	57	10.2
25-34	174	31.1
35-44	136	24.3
45+	191	34.2
Race/Ethnicity		
American Indian	1	0.2
Asian/PI	1	0.2
Black, NH	416	74.4
Hispanic/Latinx	31	5.5
Multi-race	5	0.9
White, NH	105	18.8
Total	559	100.0

	No.	%
Exposure Category		
MSM	173	41.7
Transwomen - sex with men	7	1.7
MSM/IDU	11	2.7
IDU	33	8.0
HRH	111	26.7
FPHC	75	18.1
Perinatal	5	1.2
Total	415	100.0

No Reported Risk 144

10-Year Trends in New AIDS Diagnoses Louisiana, 2007-2016



Persons Diagnosed with P&S Syphilis Louisiana, January - December 2017

Between January 1 and December 31, 2017, **637** persons were diagnosed with P&S Syphilis in Louisiana.

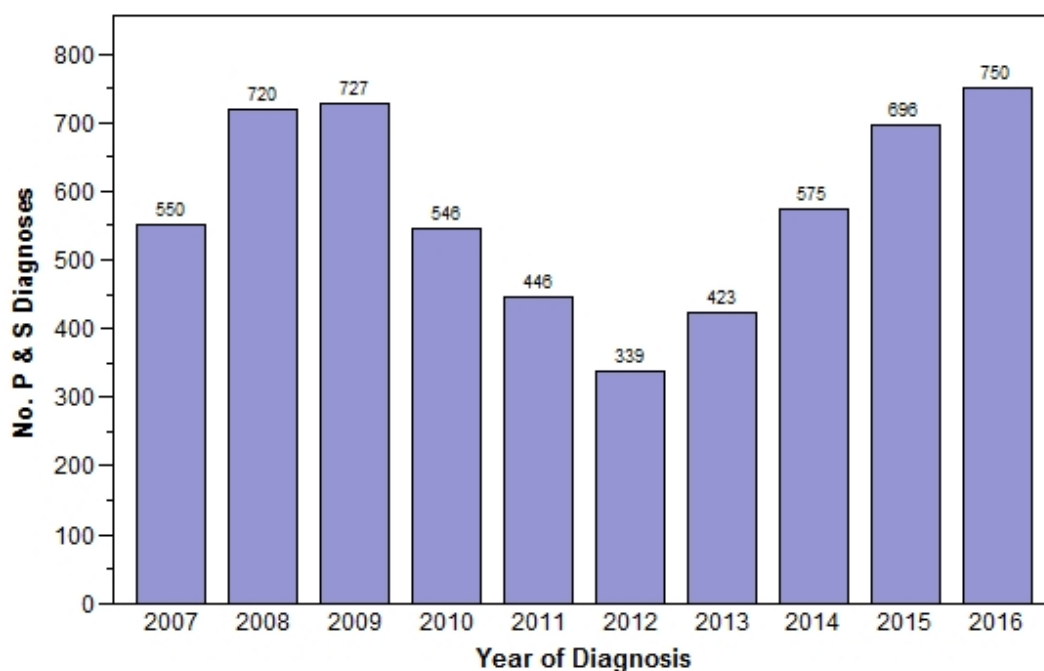
	No.	%
Gender		
Men	455	71.4
Women	177	27.8
Transgender women	5	0.8
Age at Diagnosis		
13-19	58	9.1
20-29	311	48.8
30-39	165	25.9
40+	103	16.2
Race/Ethnicity		
American Indian	5	0.8
Asian/PI	6	0.9
Black, NH	439	68.9
Hispanic/Latinx	9	1.4
White, NH	178	27.9
State Total	637	100.0

<i>Cases with a Reported Risk*</i>	No.	%
HRH	110	17.8
Heterosexual contact	253	41.0
IDU	6	1.0
Illegal drug use (non-injection)	178	28.8
Incarceration	45	7.3
MSM	297	48.1
MSM/IDU	2	0.3
Transactional sex	21	3.4

No Reported Risk 20

* >1 reported risk per case possible. Cases with No Reported Risk excluded from denominator for risk percent calculations

10-Year Trends in P & S Syphilis Diagnoses Louisiana, 2007-2016



Persons Diagnosed with Early Latent Syphilis
Louisiana, January - December 2017

Between January 1 and December 31, 2017, **583** persons were diagnosed with Early Latent Syphilis in Louisiana.

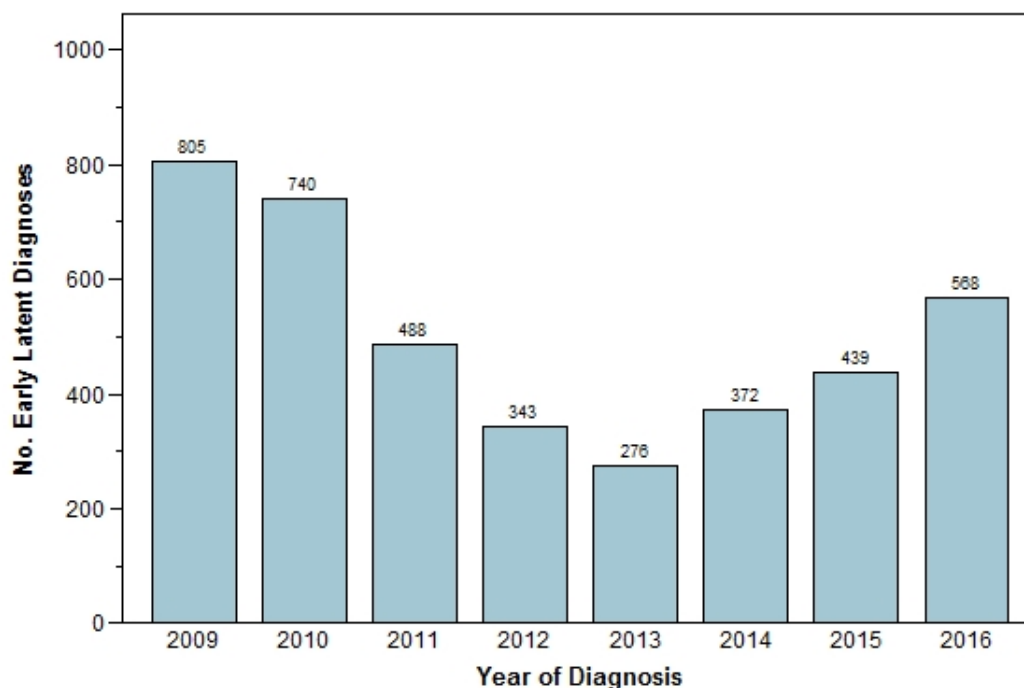
	No.	%
Gender		
Men	410	70.3
Women	158	27.1
Transgender women	15	2.6
Age at Diagnosis		
13-19	41	7.0
20-29	287	49.2
30-39	157	26.9
40+	98	16.8
Race/Ethnicity		
American Indian	2	0.3
Asian/PI	3	0.5
Black, NH	397	68.1
Hispanic/Latinx	24	4.1
White, NH	157	26.9
State Total	583	100.0

Cases with a Reported Risk*	No.	%
HRH	69	12.1
Heterosexual contact	222	39.1
IDU	5	0.9
Illegal drug use (non-injection)	144	25.4
Incarceration	54	9.5
MSM	303	53.3
MSM/IDU	8	1.4
Transactional sex	27	4.8

No Reported Risk 15

* >1 reported risk per case possible. Cases with No Reported Risk excluded from denominator for risk percent calculations

8-Year Trends in Early Latent Syphilis Diagnoses
Louisiana, 2009-2016



***Persons Living with Infection by Parish
as of December 31, 2017***

<i>Parish</i>	<i>No. PLWH</i>	<i>Parish</i>	<i>No. PLWH</i>
Acadia	131	Sabine	16
Allen	217	St. Bernard	189
Ascension	249	St. Charles	121
Assumption	37	St. Helena	23
Avoyelles	174	St. James	79
Beauregard	55	St. John the Baptist	182
Bienville	31	St. Landry	304
Bossier	260	St. Martin	116
Caddo	1,256	St. Mary	97
Calcasieu	714	St. Tammany	505
Caldwell	20	Tangipahoa	439
Cameron	3	Tensas	31
Catahoula	28	Terrebonne	234
Claiborne	96	Union	43
Concordia	48	Vermilion	103
De Soto	58	Vernon	74
East Baton Rouge	4,094	Washington	204
East Carroll	24	Webster	84
East Feliciana	192	West Baton Rouge	116
Evangeline	104	West Carroll	15
Franklin	53	West Feliciana	147
Grant	53	Winn	29
Iberia	136		
Iberville	303		
Jackson	21		
Jefferson	2,050		
Jefferson Davis	66		
LaSalle	49		
Lafayette	804		
Lafourche	159		
Lincoln	109		
Livingston	223		
Madison	42		
Morehouse	74		
Natchitoches	127		
Orleans	5,242		
Ouachita	648		
Plaquemines	48		
Pointe Coupee	55		
Rapides	518		
Red River	15		
Richland	47		

Total PLWH: 21,784

Persons Diagnosed with Early Syphilis* by Parish
January - December 2017

<i>Parish</i>	<i>No. Diagnoses</i>	<i>Parish</i>	<i>No. Diagnoses</i>
Acadia	8	Sabine	2
Allen	1	St. Bernard	12
Ascension	14	St. Charles	4
Assumption	2	St. Helena	1
Avoyelles	4	St. James	2
Beauregard	2	St. John the Baptist	6
Bienville	1	St. Landry	24
Bossier	42	St. Martin	13
Caddo	111	St. Mary	7
Calcasieu	31	St. Tammany	17
Caldwell	1	Tangipahoa	17
Cameron	0	Tensas	0
Catahoula	0	Terrebonne	20
Claiborne	2	Union	5
Concordia	2	Vermilion	4
De Soto	5	Vernon	1
East Baton Rouge	131	Washington	3
East Carroll	1	Webster	9
East Feliciana	0	West Baton Rouge	4
Evangeline	4	West Carroll	0
Franklin	2	West Feliciana	1
Grant	1	Winn	2
Iberia	16		
Iberville	11		
Jackson	3		
Jefferson	101		
Jefferson Davis	3		
LaSalle	0		
Lafayette	56		
Lafourche	37		
Lincoln	27		
Livingston	5		
Madison	2		
Morehouse	35		
Natchitoches	4		
Orleans	271		
Ouachita	80		
Plaquemines	1		
Pointe Coupee	0		
Rapides	42		
Red River	0		
Richland	7		

Total Early Syphilis Cases: 1,120

* A syphilis diagnosis with less than one year duration is considered "early syphilis." This designation covers the primary, secondary, and early latent stages of syphilis.

**Persons Living with HIV Infection
Metro New Orleans
as of December 31, 2017**

Jefferson, Orleans, Plaquemines, St. Tammany, St. John the Baptist, St. Bernard, St. James, & St. Charles Parishes

8,416 persons are currently living with HIV/AIDS in Metro New Orleans.

Number of persons living with HIV: **4,097**

Number of persons living with AIDS: **4,319**

	No.	%
Gender		
Men	6,170	73.3
Women	2,109	25.1
Transgender women	136	1.6
Transgender men	1	0.0
Current Age		
0-12	17	0.2
13-19	50	0.6
20-24	302	3.6
25-29	752	8.9
30-34	894	10.6
35-39	937	11.1
40-44	924	11.0
45-49	985	11.7
50-54	1,207	14.3
55-59	1,071	12.7
60+	1,277	15.2
Total	8,416	100.0

	Men		Women		Transgender women		Transgender men		Metro New Orleans Totals	
Race/Ethnicity	No.	%	No.	%	No.	%	No.	%	No.	%
American Indian	10	0.2	1	0.0	-	-	-	-	11	0.1
Asian/PI	36	0.6	6	0.3	2	1.5	-	-	44	0.5
Black, NH	3,490	56.6	1,699	80.6	108	79.4	1	100.0	5,298	63.0
Hispanic/Latinx	430	7.0	122	5.8	11	8.1	-	-	563	6.7
Multi-race	36	0.6	9	0.4	1	0.7	-	-	46	0.5
White, NH	2,164	35.1	271	12.8	14	10.3	-	-	2,449	29.1
Unknown	4	0.1	1	0.0	-	-	-	-	5	0.1
Total	6,170	100.0	2,109	100.0	136	100.0	1	100.0	8,416	100.0

**Persons Living with HIV Infection
Metro New Orleans
as of December 31, 2017**

Jefferson, Orleans, Plaquemines, St. Tammany, St. John the Baptist, St. Bernard, St. James, & St. Charles Parishes

Exposure Category	Men		Women		Transgender women		Metro New Orleans Totals	
	No.	%	No.	%	No.	%	No.	%
MSM	3,631	77.0	-	-	-	-	3,631	54.0
Transwomen - sex with men	-	-	-	-	116	87.2	116	1.7
MSM/IDU	317	6.7	-	-	-	-	317	4.7
Transwomen - sex with men/IDU	-	-	-	-	16	12.0	16	0.2
IDU	316	6.7	210	11.2	-	-	526	7.8
HRH	400	8.5	879	46.8	1	0.8	1,280	19.0
FPHC	-	-	732	38.9	-	-	732	10.9
Transfusion/Hemophilia	16	0.3	14	0.7	-	-	30	0.4
Perinatal	35	0.7	45	2.4	-	-	80	1.2
Total	4,715	100.0	1,880	100.0	133	100.0	6,728	100.0

	<i>Men</i>	<i>Women</i>	<i>Transgender women</i>	<i>Transgender men</i>	<i>Total</i>
<i>No Reported Risk</i>	1,455	229	3	1	1,688

Persons Newly Diagnosed with HIV and AIDS Metro New Orleans

Jefferson, Orleans, Plaquemines, St. Tammany, St. John the Baptist, St. Bernard, St. James, & St. Charles Parishes

Persons Diagnosed with HIV January - December 2016

In 2016, **409** persons were newly diagnosed with HIV in Metro New Orleans.

	No.	%		No.	%
Gender			Exposure Category		
Men	311	76.0	MSM	201	62.8
Women	89	21.8	Transwomen - sex with men	9	2.8
Transgender women	9	2.2	MSM/IDU	7	2.2
Age at Diagnosis			IDU	15	4.7
0-12	1	0.2	HRH	50	15.6
13-24	104	25.4	FPHC	37	11.6
25-34	143	35.0	Perinatal	1	0.3
35-44	75	18.3	Total	320	100.0
45+	86	21.0			
Race/Ethnicity					
Asian/PI	1	0.2			
Black, NH	285	69.7			
Hispanic/Latinx	37	9.0			
Multi-race	1	0.2			
White, NH	85	20.8			
Total	409	100.0			

No Reported Risk 89

Persons Diagnosed with AIDS January - December 2016

In 2016, **177** persons were newly diagnosed with AIDS in Metro New Orleans.

	No.	%		No.	%
Gender			Exposure Category		
Men	125	70.6	MSM	62	44.0
Women	51	28.8	Transwomen - sex with men	1	0.7
Transgender women	1	0.6	MSM/IDU	6	4.3
Age at Diagnosis			IDU	12	8.5
0-12	1	0.6	HRH	39	27.7
13-24	14	7.9	FPHC	19	13.5
25-34	57	32.2	Perinatal	2	1.4
35-44	43	24.3	Total	141	100.0
45+	62	35.0			
Race/Ethnicity					
Black, NH	124	70.1			
Hispanic/Latinx	18	10.2			
White, NH	35	19.8			
Total	177	100.0			

No Reported Risk 36

Persons Diagnosed with Early Syphilis Metro New Orleans

Jefferson, Orleans, Plaquemines, St. Tammany, St. John the Baptist, St. Bernard, St. James, & St. Charles Parishes

Persons Diagnosed with P & S Syphilis January - December 2017

Between January 1 through December 31, 2017, **193** persons were newly diagnosed with P&S Syphilis in Metro New Orleans.

	No.	%
Gender		
Men	155	80.3
Women	36	18.7
Transgender women	2	1.0
Age at Diagnosis		
13-19	11	5.7
20-29	94	48.7
30-39	48	24.9
40+	40	20.7
Race/Ethnicity		
American Indian	1	0.5
Asian/PI	4	2.1
Black, NH	119	61.7
Hispanic/Latinx	6	3.1
White, NH	63	32.6
Total	193	100.0

<i>Cases with a Reported Risk*</i>	No.	%
HRH	28	15.3
Heterosexual contact	51	27.9
IDU	1	0.5
Illegal drug use (non-injection)	52	28.4
Incarceration	11	6.0
MSM	122	66.7
MSM/IDU	2	1.1
Transactional sex	7	3.8

No Reported Risk 10

Persons Diagnosed with Early Latent Syphilis January - December 2017

Between January 1 through December 31, 2017, **221** persons were newly diagnosed with Early Latent Syphilis in Metro New Orleans.

	No.	%
Gender		
Men	180	81.4
Women	34	15.4
Transgender women	7	3.2
Age at Diagnosis		
13-19	8	3.6
20-29	104	47.1
30-39	60	27.1
40+	49	22.2
Race/Ethnicity		
Asian/PI	1	0.5
Black, NH	137	62.0
Hispanic/Latinx	17	7.7
White, NH	66	29.9
Total	221	100.0

<i>Case with a Reported Risk*</i>	No.	%
HRH	20	9.5
Heterosexual contact	59	28.0
IDU	0	0.0
Illegal drug use (non-injection)	49	23.2
Incarceration	8	3.8
MSM	151	71.6
MSM/IDU	5	2.4
Transactional sex	9	4.3

No Reported Risk 10

* >1 reported risk per case possible. Cases with No Reported Risk excluded from denominator for risk percent calculations

**Persons Living with HIV Infection
Metro Baton Rouge
as of December 31, 2017**

Ascension, East Baton Rouge, East Feliciana, Iberville, Livingston, Pointe Coupee, St. Helena, West Baton Rouge, & West Feliciana Parishes

5,402 persons are currently living with HIV/AIDS in Metro Baton Rouge.

Number of persons living with HIV: **2,575**

Number of persons living with AIDS: **2,827**

	No.	%
Gender		
Men	3,434	63.6
Women	1,912	35.4
Transgender women	56	1.0
Current Age		
0-12	16	0.3
13-19	33	0.6
20-24	213	3.9
25-29	493	9.1
30-34	601	11.1
35-39	698	12.9
40-44	642	11.9
45-49	706	13.1
50-54	674	12.5
55-59	619	11.5
60+	707	13.1
Total	5,402	100.0

	Men		Women		Transgender women		Metro Baton Rouge Totals	
Race/Ethnicity	No.	%	No.	%	No.	%	No.	%
American Indian	2	0.1	-	-	-	-	2	0.0
Asian/PI	10	0.3	5	0.3	-	-	15	0.3
Black, NH	2,652	77.2	1,708	89.3	52	92.9	4,412	81.7
Hispanic/Latinx	77	2.2	22	1.2	1	1.8	100	1.9
Multi-race	18	0.5	8	0.4	-	-	26	0.5
White, NH	674	19.6	169	8.8	3	5.4	846	15.7
Unknown	1	0.0	-	-	-	-	1	0.0
Total	3,434	100.0	1,912	100.0	56	100.0	5,402	100.0

**Persons Living with HIV Infection
Metro Baton Rouge
as of December 31, 2017**

Ascension, East Baton Rouge, East Feliciana, Iberville, Livingston, Pointe Coupee, St. Helena, West Baton Rouge, & West Feliciana Parishes

Exposure Category	Men		Women		Transgender women		Metro Baton Rouge Totals	
	No.	%	No.	%	No.	%	No.	%
MSM	1,517	63.4	-	-	-	-	1,517	36.4
Transwomen - sex with men	-	-	-	-	50	94.3	50	1.2
MSM/IDU	183	7.7	-	-	-	-	183	4.4
Transwomen - sex with men/IDU	-	-	-	-	3	5.7	3	0.1
IDU	337	14.1	199	11.5	-	-	536	12.9
HRH	321	13.4	724	42.0	-	-	1,045	25.1
FPHC	-	-	766	44.4	-	-	766	18.4
Transfusion/Hemophilia	6	0.3	8	0.5	-	-	14	0.3
Perinatal	28	1.2	28	1.6	-	-	56	1.3
Total	2,392	100.0	1,725	100.0	53	100.0	4,170	100.0

	<i>Men</i>	<i>Women</i>	<i>Transgender women</i>	<i>Total</i>
<i>No Reported Risk</i>	1,042	187	3	1,232

Persons Newly Diagnosed with HIV Metro Baton Rouge

Ascension, East Baton Rouge, East Feliciana, Iberville, Livingston, Pointe Coupee, St. Helena, West Baton Rouge, & West Feliciana Parishes

Persons Diagnosed with HIV January - December 2016

In 2016, **245** persons were newly diagnosed with HIV in Metro Baton Rouge.

	No.	%		No.	%
Gender			Exposure Category		
Men	165	67.3	MSM	89	50.0
Women	77	31.4	Transwomen - sex with men	3	1.7
Transgender women	3	1.2	MSM/IDU	2	1.1
Age at Diagnosis			IDU	8	4.5
13-24	56	22.9	HRH	40	22.5
25-34	82	33.5	FPHC	36	20.2
35-44	52	21.2	Total	178	100.0
45+	55	22.4			
Race/Ethnicity			<u>No Reported Risk 67</u>		
Black, NH	195	79.6			
Hispanic/Latinx	14	5.7			
White, NH	36	14.7			
Total	245	100.0			

Persons Diagnosed with AIDS January - December 2016

In 2016, **148** persons were newly diagnosed with AIDS in Metro Baton Rouge.

	No.	%		No.	%
Gender			Exposure Category		
Men	92	62.2	MSM	35	33.3
Women	54	36.5	Transwomen - sex with men	2	1.9
Transgender women	2	1.4	IDU	8	7.6
Age at Diagnosis			HRH	30	28.6
13-24	12	8.1	FPHC	28	26.7
25-34	47	31.8	Perinatal	2	1.9
35-44	39	26.4	Total	105	100.0
45+	50	33.8			
Race/Ethnicity			<u>No Reported Risk 43</u>		
Asian/PI	1	0.7			
Black, NH	119	80.4			
Hispanic/Latinx	8	5.4			
Multi-race	1	0.7			
White, NH	19	12.8			
Total	148	100.0			

Persons Diagnosed with Early Syphilis Metro Baton Rouge

*Ascension, East Baton Rouge, East Feliciana, Iberville, Livingston, Pointe Coupee, St. Helena, West Baton Rouge, &
West Feliciana Parishes*

Persons Diagnosed with P & S Syphilis January - December 2017

Between January 1 through December 31, 2017, **92** persons were newly diagnosed with P&S Syphilis in Metro Baton Rouge.

	No.	%
Gender		
Men	71	77.2
Women	19	20.7
Transgender women	2	2.2
Age at Diagnosis		
13-19	8	8.7
20-29	44	47.8
30-39	21	22.8
40+	19	20.7
Race/Ethnicity		
Asian/PI	1	1.1
Black, NH	71	77.2
White, NH	20	21.7
Total	92	100.0

<i>Cases with a Reported Risk*</i>	No.	%
HRH	17	19.1
Heterosexual contact	27	30.3
IDU	0	0.0
Illegal drug use (non-injection)	5	5.6
Incarceration	0	0.0
MSM	53	59.6
MSM/IDU	0	0.0
Transactional sex	3	3.4

No Reported Risk 3

Persons Diagnosed with Early Latent Syphilis January - December 2017

Between January 1 through December 31, 2017, **75** persons were newly diagnosed with Early Latent Syphilis in Metro Baton Rouge.

	No.	%
Gender		
Men	61	81.3
Women	11	14.7
Transgender women	3	4.0
Age at Diagnosis		
20-29	35	46.7
30-39	25	33.3
40+	15	20.0
Race/Ethnicity		
Asian/PI	1	1.3
Black, NH	56	74.7
Hispanic/Latinx	1	1.3
White, NH	17	22.7
Total	75	100.0

<i>Cases with a Reported Risk*</i>	No.	%
HRH	8	10.8
Heterosexual contact	18	24.3
IDU	0	0.0
Illegal drug use (non-injection)	16	21.6
Incarceration	9	12.2
MSM	52	70.3
MSM/IDU	2	2.7
Transactional sex	3	4.1

No Reported Risk 1

* >1 reported risk per case possible. Cases with No Reported Risk excluded from denominator for risk percent calculations

People Living with HIV/AIDS by Region as of December 31, 2017

	<i>New HIV Infections thru 12-31-2016</i>	<i>New AIDS Infections thru 12-31-2016</i>	<i>Persons Living with HIV(nonAIDS) thru 12-31-2017</i>	<i>Persons Living with AIDS thru 12-31-2017</i>	<i>Persons Living with HIV or AIDS thru 12-31-2017</i>
Region 1	352	157	3,672	3,857	7,529
Region 2	231	143	2,456	2,700	5,156
Region 3	59	18	430	479	909
Region 4	111	54	854	844	1,698
Region 5	38	26	510	545	1,055
Region 6	59	29	506	467	973
Region 7	138	60	1,004	939	1,943
Region 8	71	38	547	580	1,127
Region 9	69	34	649	745	1,394
State Total	1,128	559	10,628	11,156	21,784



Region 1 (New Orleans): Jefferson, Orleans, Plaquemines, St. Bernard

Region 2 (Baton Rouge): Ascension, East Baton Rouge, East Feliciana, Iberville, Pointe Coupee, West Baton Rouge, West Feliciana

Region 3 (Houma): Assumption, Lafourche, St. Charles, St. James, St. John the Baptist, St. Mary, Terrebonne

Region 4 (Lafayette): Acadia, Evangeline, Iberia, Lafayette, St. Landry, St. Martin, Vermilion

Region 5 (Lake Charles): Allen, Beauregard, Calcasieu, Cameron, Jefferson Davis

Region 6 (Alexandria): Avoyelles, Catahoula, Concordia, Grant, LaSalle, Rapides, Vernon, Winn

Region 8 (Monroe): Caldwell, East Carroll, Franklin, Jackson, Lincoln, Madison, Morehouse, Ouachita, Richland, Tensas, Union, West Carroll

Region 9 (Hammond/Slidell): Livingston, St. Helena, St. Tammany, Tangipahoa, Washington

Persons Living with HIV Infection
Region 1: New Orleans Region
as of December 31, 2017
Jefferson, Orleans, Plaquemines & St. Bernard Parishes

	No.	%
Gender		
Men	5,530	73.4
Women	1,874	24.9
Transgender women	124	1.6
Transgender men	1	0.0
Current Age		
0-12	14	0.2
13-19	42	0.6
20-24	263	3.5
25-29	679	9.0
30-34	801	10.6
35-39	835	11.1
40-44	828	11.0
45-49	879	11.7
50-54	1,074	14.3
55-59	958	12.7
60+	1,156	15.4
Total	7,529	100.0

	Men		Women		Transgender women		Transgender men		Region 1 Totals	
	No.	%	No.	%	No.	%	No.	%	No.	%
Race/Ethnicity										
American Indian	8	0.1	1	0.1	-	-	-	-	9	0.1
Asian/PI	32	0.6	4	0.2	2	1.6	-	-	38	0.5
Black, NH	3,200	57.9	1,543	82.3	99	79.8	1	100.0	4,843	64.3
Hispanic/Latinx	404	7.3	110	5.9	10	8.1	-	-	524	7.0
Multi-race	32	0.6	8	0.4	1	0.8	-	-	41	0.5
White, NH	1,850	33.5	207	11.0	12	9.7	-	-	2,069	27.5
Unknown	4	0.1	1	0.1	-	-	-	-	5	0.1
Total	5,530	100.0	1,874	100.0	124	100.0	1	100.0	7,529	100.0

	Men		Women		Transgender women		Region 1 Totals	
	No.	%	No.	%	No.	%	No.	%
Exposure Category								
MSM	3,240	76.6	-	-	-	-	3,240	53.8
Transwomen - sex with men	-	-	-	-	106	86.9	106	1.8
MSM/IDU	296	7.0	-	-	-	-	296	4.9
Transwomen - sex with men/IDU	-	-	-	-	15	12.3	15	0.2
IDU	285	6.7	190	11.4	-	-	475	7.9
HRH	367	8.7	779	46.6	1	0.8	1,147	19.0
FPHC	-	-	650	38.9	-	-	650	10.8
Transfusion/Hemophilia	15	0.4	14	0.8	-	-	29	0.5
Perinatal	27	0.6	38	2.3	-	-	65	1.1
Total	4,230	100.0	1,671	100.0	122	100.0	6,023	100.0

	Men	Women	Transgender women	Transgender men	Region 1 Total
No Reported Risk	1,300	203	2	1	1,506

Persons Living with HIV Infection

Region 2: Baton Rouge Region

as of December 31, 2017

Ascension, East Baton Rouge, East Feliciana, Iberville, Pointe Coupee, West Baton Rouge, & West Feliciana Parishes

	No.	%
Gender		
Men	3,276	63.5
Women	1,828	35.5
Transgender women	52	1.0
Current Age		
0-12	14	0.3
13-19	32	0.6
20-24	205	4.0
25-29	473	9.2
30-34	583	11.3
35-39	677	13.1
40-44	609	11.8
45-49	665	12.9
50-54	632	12.3
55-59	591	11.5
60+	675	13.1
Total	5,156	100.0

	Men		Women		Transgender women		Region 2 Totals	
	No.	%	No.	%	No.	%	No.	%
Race/Ethnicity								
American Indian	2	0.1	-	-	-	-	2	0.0
Asian/PI	10	0.3	4	0.2	-	-	14	0.3
Black, NH	2,598	79.3	1,671	91.4	48	92.3	4,317	83.7
Hispanic/Latinx	73	2.2	18	1.0	1	1.9	92	1.8
Multi-race	18	0.5	8	0.4	-	-	26	0.5
White, NH	574	17.5	127	6.9	3	5.8	704	13.7
Unknown	1	0.0	-	-	-	-	1	0.0
Total	3,276	100.0	1,828	100.0	52	100.0	5,156	100.0

	Men		Women		Transgender women		Region 2 Totals	
	No.	%	No.	%	No.	%	No.	%
Exposure Category								
MSM	1,429	62.8	-	-	-	-	1,429	36.0
Transwomen - sex with men	-	-	-	-	46	93.9	46	1.2
MSM/IDU	174	7.7	-	-	-	-	174	4.4
Transwomen - sex with men/IDU	-	-	-	-	3	6.1	3	0.1
IDU	330	14.5	187	11.4	-	-	517	13.0
HRH	308	13.5	692	42.0	-	-	1,000	25.2
FPHC	-	-	734	44.6	-	-	734	18.5
Transfusion/Hemophilia	5	0.2	8	0.5	-	-	13	0.3
Perinatal	28	1.2	25	1.5	-	-	53	1.3
Total	2,274	100.0	1,646	100.0	49	100.0	3,969	100.0

	Men	Women	Transgender women	Region 2 Total
No Reported Risk	1,002	182	3	1,187

Persons Living with HIV Infection

Region 3: Houma Region

as of December 31, 2017

Assumption, Lafourche, St. Charles, St. James, St. John the Baptist, St. Mary, & Terrebonne Parishes

	No.	%
Gender		
Men	601	66.1
Women	296	32.6
Transgender women	12	1.3
Current Age		
0-12	4	0.4
13-19	7	0.8
20-24	55	6.1
25-29	81	8.9
30-34	111	12.2
35-39	99	10.9
40-44	101	11.1
45-49	118	13.0
50-54	119	13.1
55-59	98	10.8
60+	116	12.8
Total	909	100.0

	Men		Women		Transgender women		Region 3 Totals	
	No.	%	No.	%	No.	%	No.	%
Race/Ethnicity								
American Indian	2	0.3	1	0.3	-	-	3	0.3
Asian/PI	2	0.3	1	0.3	-	-	3	0.3
Black, NH	331	55.1	216	73.0	8	66.7	555	61.1
Hispanic/Latinx	26	4.3	11	3.7	-	-	37	4.1
Multi-race	3	0.5	3	1.0	-	-	6	0.7
White, NH	237	39.4	64	21.6	4	33.3	305	33.6
Total	601	100.0	296	100.0	12	100.0	909	100.0

	Men		Women		Transgender women		Region 3 Totals	
	No.	%	No.	%	No.	%	No.	%
Exposure Category								
MSM	356	77.1	-	-	-	-	356	47.9
Transwomen - sex with men	-	-	-	-	9	81.8	9	1.2
MSM/IDU	20	4.3	-	-	-	-	20	2.7
Transwomen - sex with men/IDU	-	-	-	-	2	18.2	2	0.3
IDU	40	8.7	20	7.4	-	-	60	8.1
HRH	39	8.4	145	53.7	-	-	184	24.8
FPHC	-	-	95	35.2	-	-	95	12.8
Perinatal	7	1.5	10	3.7	-	-	17	2.3
Total	462	100.0	270	100.0	11	100.0	743	100.0

	Men	Women	Transgender women	Region 3 Total
No Reported Risk	139	26	1	166

Persons Living with HIV Infection

Region 4: Lafayette Region

as of December 31, 2017

Acadia, Evangeline, Iberia, Lafayette, St. Landry, St. Martin, & Vermilion Parishes

	No.	%
Gender		
Men	1,253	73.8
Women	434	25.6
Transgender women	11	0.6
Current Age		
0-12	3	0.2
13-19	13	0.8
20-24	83	4.9
25-29	164	9.7
30-34	180	10.6
35-39	193	11.4
40-44	147	8.7
45-49	200	11.8
50-54	266	15.7
55-59	212	12.5
60+	237	14.0
Total	1,698	100.0

	Men		Women		Transgender women		Region 4 Totals	
	No.	%	No.	%	No.	%	No.	%
Race/Ethnicity								
American Indian	4	0.3	2	0.5	-	-	6	0.4
Asian/PI	5	0.4	3	0.7	-	-	8	0.5
Black, NH	645	51.5	301	69.4	9	81.8	955	56.2
Hispanic/Latinx	78	6.2	7	1.6	-	-	85	5.0
Multi-race	15	1.2	4	0.9	-	-	19	1.1
White, NH	506	40.4	117	27.0	2	18.2	625	36.8
Total	1,253	100.0	434	100.0	11	100.0	1,698	100.0

	Men		Women		Transgender women		Region 4 Totals	
	No.	%	No.	%	No.	%	No.	%
Exposure Category								
MSM	670	75.8	-	-	-	-	670	52.4
Transwomen - sex with men	-	-	-	-	9	81.8	9	0.7
MSM/IDU	58	6.6	-	-	-	-	58	4.5
Transwomen - sex with men/IDU	-	-	-	-	2	18.2	2	0.2
IDU	67	7.6	51	13.3	-	-	118	9.2
HRH	78	8.8	207	53.9	-	-	285	22.3
FPHC	-	-	120	31.3	-	-	120	9.4
Transfusion/Hemophilia	4	0.5	1	0.3	-	-	5	0.4
Perinatal	7	0.8	4	1.0	-	-	11	0.9
Confirmed Other	-	-	1	0.3	-	-	1	0.1
Total	884	100.0	384	100.0	11	100.0	1,279	100.0

	Men	Women	Region 4 Total
No Reported Risk	369	50	419

Persons Living with HIV Infection

Region 5: Lake Charles Region

as of December 31, 2017

Allen, Beauregard, Calcasieu, Cameron, & Jefferson Davis Parishes

	No.	%
Gender		
Men	788	74.7
Women	260	24.6
Transgender women	7	0.7
Current Age		
0-12	1	0.1
13-19	5	0.5
20-24	41	3.9
25-29	86	8.2
30-34	96	9.1
35-39	106	10.0
40-44	137	13.0
45-49	138	13.1
50-54	162	15.4
55-59	149	14.1
60+	134	12.7
Total	1,055	100.0

	Men		Women		Transgender women		Region 5 Totals	
	No.	%	No.	%	No.	%	No.	%
Race/Ethnicity								
American Indian	3	0.4	-	-	-	-	3	0.3
Asian/PI	6	0.8	-	-	-	-	6	0.6
Black, NH	405	51.4	174	66.9	6	85.7	585	55.5
Hispanic/Latinx	88	11.2	7	2.7	-	-	95	9.0
Multi-race	9	1.1	5	1.9	-	-	14	1.3
White, NH	277	35.2	74	28.5	1	14.3	352	33.4
Total	788	100.0	260	100.0	7	100.0	1,055	100.0

	Men		Women		Transgender women		Region 5 Totals	
	No.	%	No.	%	No.	%	No.	%
Exposure Category								
MSM	363	61.2	-	-	-	-	363	43.2
Transwomen - sex with men	-	-	-	-	7	100.0	7	0.8
MSM/IDU	59	9.9	-	-	-	-	59	7.0
IDU	79	13.3	33	13.7	-	-	112	13.3
HRH	85	14.3	109	45.2	-	-	194	23.1
FPHC	-	-	92	38.2	-	-	92	10.9
Transfusion/Hemophilia	2	0.3	-	-	-	-	2	0.2
Perinatal	5	0.8	7	2.9	-	-	12	1.4
Total	593	100.0	241	100.0	7	100.0	841	100.0

	Men	Women	Region 5 Total
No Reported Risk	195	19	214

Persons Living with HIV Infection

Region 6: Alexandria Region

as of December 31, 2017

Avoyelles, Catahoula, Concordia, Grant, La Salle, Rapides, Vernon, & Winn Parishes

	No.	%
Gender		
Men	696	71.5
Women	271	27.9
Transgender women	6	0.6
Current Age		
0-12	2	0.2
13-19	4	0.4
20-24	28	2.9
25-29	79	8.1
30-34	100	10.3
35-39	121	12.4
40-44	141	14.5
45-49	118	12.1
50-54	139	14.3
55-59	104	10.7
60+	137	14.1
Total	973	100.0

	Men		Women		Transgender women		Region 6 Totals	
	No.	%	No.	%	No.	%	No.	%
Race/Ethnicity								
American Indian	-	-	2	0.7	-	-	2	0.2
Asian/PI	4	0.6	-	-	-	-	4	0.4
Black, NH	416	59.8	210	77.5	3	50.0	629	64.6
Hispanic/Latinx	58	8.3	5	1.8	1	16.7	64	6.6
Multi-race	5	0.7	3	1.1	-	-	8	0.8
White, NH	213	30.6	51	18.8	2	33.3	266	27.3
Total	696	100.0	271	100.0	6	100.0	973	100.0

	Men		Women		Transgender women		Region 6 Totals	
	No.	%	No.	%	No.	%	No.	%
Exposure Category								
MSM	319	64.1	-	-	-	-	319	42.3
Transwomen - sex with men	-	-	-	-	4	66.7	4	0.5
MSM/IDU	33	6.6	-	-	-	-	33	4.4
Transwomen - sex with men/IDU	-	-	-	-	2	33.3	2	0.3
IDU	61	12.2	22	8.8	-	-	83	11.0
HRH	79	15.9	131	52.2	-	-	210	27.8
FPHC	-	-	94	37.5	-	-	94	12.5
Transfusion/Hemophilia	2	0.4	1	0.4	-	-	3	0.4
Perinatal	4	0.8	3	1.2	-	-	7	0.9
Total	498	100.0	251	100.0	6	100.0	755	100.0

	Men	Women	Region 6 Total
No Reported Risk	198	20	218

Persons Living with HIV Infection
Region 7: Shreveport Region
as of December 31, 2017

Bienville, Bossier, Caddo, Claiborne, DeSoto, Natchitoches, Red River, Sabine, & Webster Parishes

	No.	%
Gender		
Men	1,372	70.6
Women	561	28.9
Transgender women	10	0.5
Current Age		
0-12	2	0.1
13-19	13	0.7
20-24	133	6.8
25-29	253	13.0
30-34	240	12.4
35-39	228	11.7
40-44	223	11.5
45-49	232	11.9
50-54	211	10.9
55-59	195	10.0
60+	213	11.0
Total	1,943	100.0

	Men		Women		Transgender women		Region 7 Totals	
Race/Ethnicity	No.	%	No.	%	No.	%	No.	%
American Indian	10	0.7	2	0.4	-	-	12	0.6
Asian/PI	5	0.4	1	0.2	-	-	6	0.3
Black, NH	992	72.3	458	81.6	9	90.0	1,459	75.1
Hispanic/Latinx	27	2.0	5	0.9	1	10.0	33	1.7
Multi-race	9	0.7	3	0.5	-	-	12	0.6
White, NH	329	24.0	92	16.4	-	-	421	21.7
Total	1,372	100.0	561	100.0	10	100.0	1,943	100.0

	Men		Women		Transgender women		Region 7 Totals	
Exposure Category	No.	%	No.	%	No.	%	No.	%
MSM	790	76.3	-	-	-	-	790	51.0
Transwomen - sex with men	-	-	-	-	9	90.0	9	0.6
MSM/IDU	89	8.6	-	-	-	-	89	5.7
Transwomen - sex with men/IDU	-	-	-	-	1	10.0	1	0.1
IDU	53	5.1	52	10.3	-	-	105	6.8
HRH	95	9.2	235	46.7	-	-	330	21.3
FPHC	-	-	206	41.0	-	-	206	13.3
Transfusion/Hemophilia	2	0.2	3	0.6	-	-	5	0.3
Perinatal	6	0.6	7	1.4	-	-	13	0.8
Total	1,035	100.0	503	100.0	10	100.0	1,548	100.0

	Men	Women	Region 8 Total
No Reported Risk	337	58	395

Persons Living with HIV Infection

Region 8: Monroe Region

as of December 31, 2017

Caldwell, East Carroll, Franklin, Jackson, Lincoln, Madison, Morehouse, Ouachita, Richland, Tensas,
Union, & West Carroll Parishes

	No.	%
Gender		
Men	744	66.0
Women	372	33.0
Transgender women	11	1.0
Current Age		
0-12	2	0.2
13-19	15	1.3
20-24	56	5.0
25-29	97	8.6
30-34	94	8.3
35-39	131	11.6
40-44	145	12.9
45-49	141	12.5
50-54	153	13.6
55-59	125	11.1
60+	168	14.9
Total	1,127	100.0

	Men		Women		Transgender women		Region 8 Totals	
	No.	%	No.	%	No.	%	No.	%
Race/Ethnicity								
American Indian	1	0.1	3	0.8	-	-	4	0.4
Asian/PI	3	0.4	1	0.3	-	-	4	0.4
Black, NH	530	71.2	314	84.4	11	100.0	855	75.9
Hispanic/Latinx	18	2.4	6	1.6	-	-	24	2.1
Multi-race	9	1.2	2	0.5	-	-	11	1.0
White, NH	183	24.6	46	12.4	-	-	229	20.3
Total	744	100.0	372	100.0	11	100.0	1,127	100.0

	Men		Women		Transgender women		Region 8 Totals	
	No.	%	No.	%	No.	%	No.	%
Exposure Category								
MSM	404	72.4	-	-	-	-	404	44.9
Transwomen - sex with men	-	-	-	-	10	100.0	10	1.1
MSM/IDU	43	7.7	-	-	-	-	43	4.8
IDU	34	6.1	29	8.7	-	-	63	7.0
HRH	74	13.3	174	52.4	-	-	248	27.6
FPHC	-	-	117	35.2	-	-	117	13.0
Transfusion/Hemophilia	1	0.2	3	0.9	-	-	4	0.4
Perinatal	2	0.4	9	2.7	-	-	11	1.2
Total	558	100.0	332	100.0	10	100.0	900	100.0

	Men	Women	Transgender women	Region 8 Total
No Reported Risk	186	40	1	227

Persons Living with HIV Infection

Region 9: Hammond/Slidell Region

as of December 31, 2017

Livingston, St. Helena, St. Tammany, Tangipahoa, & Washington Parishes

	No.	%
Gender		
Men	1,013	72.7
Women	371	26.6
Transgender women	10	0.7
Current Age		
0-12	3	0.2
13-19	9	0.6
20-24	44	3.2
25-29	101	7.2
30-34	137	9.8
35-39	147	10.5
40-44	157	11.3
45-49	177	12.7
50-54	226	16.2
55-59	189	13.6
60+	204	14.6
Total	1,394	100.0

	Men		Women		Transgender women		Region 9 Totals	
	No.	%	No.	%	No.	%	No.	%
Race/Ethnicity								
American Indian	2	0.2	-	-	-	-	2	0.1
Asian/PI	4	0.4	2	0.5	-	-	6	0.4
Black, NH	464	45.8	233	62.8	7	70.0	704	50.5
Hispanic/Latinx	33	3.3	14	3.8	1	10.0	48	3.4
Multi-race	4	0.4	1	0.3	1	10.0	6	0.4
White, NH	505	49.9	121	32.6	1	10.0	627	45.0
Unknown	1	0.1	-	-	-	-	1	0.1
Total	1,013	100.0	371	100.0	10	100.0	1,394	100.0

	Men		Women		Transgender women		Region 9 Totals	
	No.	%	No.	%	No.	%	No.	%
Exposure Category								
MSM	554	73.9	-	-	-	-	554	50.6
Transwomen - sex with men	-	-	-	-	10	100.0	10	0.9
MSM/IDU	56	7.5	-	-	-	-	56	5.1
IDU	53	7.1	47	14.0	-	-	100	9.1
HRH	74	9.9	133	39.7	-	-	207	18.9
FPHC	-	-	149	44.5	-	-	149	13.6
Transfusion/Hemophilia	4	0.5	-	-	-	-	4	0.4
Perinatal	9	1.2	6	1.8	-	-	15	1.4
Total	750	100.0	335	100.0	10	100.0	1,095	100.0

	Men	Women	Region 9 Total
No Reported Risk	263	36	299

Persons Newly Diagnosed with HIV
Regions 1 - 5
January - December 2016

	Region 1		Region 2		Region 3		Region 4		Region 5	
	No.	%	No.	%	No.	%	No.	%	No.	%
Gender										
Men	264	75.0	157	68.0	40	67.8	72	64.9	33	86.8
Women	80	22.7	72	31.2	17	28.8	35	31.5	4	10.5
Transgender women	8	2.3	2	0.9	2	3.4	4	3.6	1	2.6
Age at Diagnosis										
0-12	1	0.3	-	-	-	-	1	0.9	-	-
13-24	92	26.1	51	22.1	18	30.5	27	24.3	12	31.6
25-34	118	33.5	78	33.8	19	32.2	41	36.9	4	10.5
35-44	61	17.3	51	22.1	14	23.7	24	21.6	10	26.3
45+	80	22.7	51	22.1	8	13.6	18	16.2	12	31.6
Race/Ethnicity										
Asian/PI	1	0.3	-	-	-	-	-	-	-	-
Black, NH	251	71.3	189	81.8	45	76.3	72	64.9	23	60.5
Hispanic/Latinx	32	9.1	14	6.1	2	3.4	5	4.5	2	5.3
Multi-race	1	0.3	-	-	1	1.7	-	-	-	-
White, NH	67	19.0	28	12.1	11	18.6	34	30.6	13	34.2
Regional Totals	352	100.0	231	100.0	59	100.0	111	100.0	38	100.0

	Region 1		Region 2		Region 3		Region 4		Region 5	
	No.	%	No.	%	No.	%	No.	%	No.	%
Exposure Category										
MSM	173	62.2	84	50.3	25	52.1	44	50.6	15	62.5
Transwomen - sex with men	8	2.9	2	1.2	2	4.2	4	4.6	1	4.2
MSM/IDU	5	1.8	2	1.2	1	2.1	1	1.1	2	8.3
IDU	13	4.7	8	4.8	2	4.2	3	3.4	2	8.3
HRH	46	16.5	40	24.0	12	25.0	25	28.7	1	4.2
FPHC	32	11.5	31	18.6	6	12.5	9	10.3	3	12.5
Perinatal	1	0.4	-	-	-	-	1	1.1	-	-
Regional Totals	278	100.0	167	100.0	48	100.0	87	100.0	24	100.0

	Region 1	Region 2	Region 3	Region 4	Region 5
No Reported Risk	74	64	11	24	14

Persons Newly Diagnosed with HIV
Regions 6 - 9
January - December 2016

	Region 6		Region 7		Region 8		Region 9	
	No.	%	No.	%	No.	%	No.	%
Gender								
Men	43	72.9	94	68.1	51	71.8	49	71.0
Women	15	25.4	42	30.4	18	25.4	19	27.5
Transgender women	1	1.7	2	1.4	2	2.8	1	1.4
Age at Diagnosis								
13-24	10	16.9	46	33.3	14	19.7	9	13.0
25-34	18	30.5	45	32.6	27	38.0	34	49.3
35-44	17	28.8	22	15.9	14	19.7	11	15.9
45+	14	23.7	25	18.1	16	22.5	15	21.7
Race/Ethnicity								
American Indian	-	-	2	1.4	-	-	-	-
Asian/PI	1	1.7	1	0.7	-	-	-	-
Black, NH	36	61.0	119	86.2	50	70.4	36	52.2
Hispanic/Latinx	3	5.1	1	0.7	1	1.4	4	5.8
Multi-race	1	1.7	-	-	-	-	-	-
White, NH	18	30.5	15	10.9	20	28.2	29	42.0
Regional Totals	59	100.0	138	100.0	71	100.0	69	100.0

	Region 6		Region 7		Region 8		Region 9	
	No.	%	No.	%	No.	%	No.	%
Exposure Category								
MSM	28	59.6	47	47.5	30	58.8	27	55.1
Transwomen - sex with men	1	2.1	2	2.0	2	3.9	1	2.0
MSM/IDU	-	-	4	4.0	1	2.0	1	2.0
IDU	1	2.1	1	1.0	2	3.9	1	2.0
HRH	10	21.3	21	21.2	8	15.7	5	10.2
FPHC	7	14.9	24	24.2	8	15.7	14	28.6
Regional Totals	47	100.0	99	100.0	51	100.0	49	100.0

	Region 6	Region 7	Region 8	Region 9
No Reported Risk	12	39	20	20

Persons Newly Diagnosed with AIDS
Regions 1 - 5
January - December 2016

	Region 1		Region 2		Region 3		Region 4		Region 5	
	No.	%	No.	%	No.	%	No.	%	No.	%
Gender										
Men	108	68.8	89	62.2	15	83.3	31	57.4	21	80.8
Women	48	30.6	52	36.4	3	16.7	22	40.7	5	19.2
Transgender women	1	0.6	2	1.4	-	-	1	1.9	-	-
Age at Diagnosis										
0-12	1	0.6	-	-	-	-	-	-	-	-
13-24	12	7.6	12	8.4	2	11.1	10	18.5	2	7.7
25-34	50	31.8	46	32.2	7	38.9	14	25.9	9	34.6
35-44	37	23.6	39	27.3	6	33.3	13	24.1	4	15.4
45+	57	36.3	46	32.2	3	16.7	17	31.5	11	42.3
Race/Ethnicity										
Asian/PI	-	-	1	0.7	-	-	-	-	-	-
Black, NH	113	72.0	116	81.1	13	72.2	37	68.5	15	57.7
Hispanic/Latinx	15	9.6	8	5.6	1	5.6	4	7.4	-	-
Multi-race	-	-	1	0.7	-	-	1	1.9	1	3.8
White, NH	29	18.5	17	11.9	4	22.2	12	22.2	10	38.5
Regional Totals	157	100.0	143	100.0	18	100.0	54	100.0	26	100.0

	Region 1		Region 2		Region 3		Region 4		Region 5	
	No.	%	No.	%	No.	%	No.	%	No.	%
Exposure Category										
MSM	55	43.0	34	33.3	8	50.0	13	34.2	9	56.3
Transwomen - sex with men	1	0.8	2	2.0	-	-	1	2.6	-	-
MSM/IDU	6	4.7	-	-	-	-	1	2.6	1	6.3
IDU	11	8.6	8	7.8	2	12.5	4	10.5	2	12.5
HRH	37	28.9	30	29.4	5	31.3	11	28.9	2	12.5
FPHC	16	12.5	26	25.5	1	6.3	8	21.1	2	12.5
Perinatal	2	1.6	2	2.0	-	-	-	-	-	-
Regional Totals	128	100.0	102	100.0	16	100.0	38	100.0	16	100.0

	Region 1	Region 2	Region 3	Region 4	Region 5
No Reported Risk	29	41	2	16	10

Persons Newly Diagnosed with AIDS
Regions 6 - 9
January - December 2016

	Region 6		Region 7		Region 8		Region 9	
	No.	%	No.	%	No.	%	No.	%
Gender								
Men	21	72.4	46	76.7	22	57.9	23	67.6
Women	7	24.1	13	21.7	15	39.5	11	32.4
Transgender women	1	3.4	1	1.7	1	2.6	-	-
Age at Diagnosis								
13-24	1	3.4	12	20.0	6	15.8	-	-
25-34	5	17.2	18	30.0	9	23.7	16	47.1
35-44	7	24.1	12	20.0	11	28.9	7	20.6
45+	16	55.2	18	30.0	12	31.6	11	32.4
Race/Ethnicity								
American Indian	-	-	1	1.7	-	-	-	-
Black, NH	22	75.9	53	88.3	27	71.1	20	58.8
Hispanic/Latinx	-	-	-	-	-	-	3	8.8
Multi-race	1	3.4	-	-	1	2.6	-	-
White, NH	6	20.7	6	10.0	10	26.3	11	32.4
Regional Totals	29	100.0	60	100.0	38	100.0	34	100.0

	Region 6		Region 7		Region 8		Region 9	
	No.	%	No.	%	No.	%	No.	%
Exposure Category								
MSM	11	55.0	22	52.4	14	42.4	7	35.0
Transwomen - sex with men	1	5.0	1	2.4	1	3.0	-	-
MSM/IDU	-	-	2	4.8	1	3.0	-	-
IDU	2	10.0	1	2.4	1	3.0	2	10.0
HRH	2	10.0	10	23.8	11	33.3	3	15.0
FPHC	4	20.0	5	11.9	5	15.2	8	40.0
Perinatal	-	-	1	2.4	-	-	-	-
Regional Totals	20	100.0	42	100.0	33	100.0	20	100.0

	Region 6	Region 7	Region 8	Region 9
No Reported Risk	9	18	5	14

Persons Diagnosed with P & S Syphilis
Regions 1-5
January - December 2017

	Region 1		Region 2		Region 3		Region 4		Region 5	
	No.	%	No.	%	No.	%	No.	%	No.	%
Gender										
Men	140	79.1	68	76.4	27	73.0	37	71.2	17	63.0
Women	35	19.8	19	21.3	10	27.0	15	28.8	10	37.0
Transgender women	2	1.1	2	2.2	-	-	-	-	-	-
Age at Diagnosis										
13-19	9	5.1	8	9.0	-	-	7	13.5	2	7.4
20-29	86	48.6	43	48.3	18	48.6	24	46.2	11	40.7
30-39	44	24.9	21	23.6	12	32.4	13	25.0	11	40.7
40+	38	21.5	17	19.1	7	18.9	8	15.4	3	11.1
Race/Ethnicity										
American Indian	-	-	-	-	2	5.4	-	-	-	-
Asian/PI	3	1.7	1	1.1	-	-	-	-	-	-
Black, NH	113	63.8	70	78.7	18	48.6	34	65.4	17	63.0
Hispanic/Latinx	4	2.3	-	-	-	-	-	-	-	-
White, NH	57	32.2	18	20.2	17	45.9	18	34.6	10	37.0
Regional Totals	177	100.0	89	100.0	37	100.0	52	100.0	27	100.0

	Region 1		Region 2		Region 3		Region 4		Region 5	
<i>Cases with a Reported Risk*</i>	No.	%	No.	%	No.	%	No.	%	No.	%
HRH	25	14.9	16	18.6	5	14.3	7	13.7	5	18.5
Heterosexual contact	48	28.6	27	31.4	17	48.6	26	51.0	14	51.9
IDU	1	0.6	0	0.0	0	0.0	0	0.0	2	7.4
Illegal drug use (non-injection)	48	28.6	5	5.8	11	31.4	17	33.3	8	29.6
Incarceration	11	6.5	0	0.0	6	17.1	0	0.0	2	7.4
MSM	109	64.9	51	59.3	15	42.9	20	39.2	7	25.9
MSM/IDU	2	1.2	0	0.0	0	0.0	0	0.0	0	0.0
Transactional sex	7	4.2	3	3.5	3	8.6	2	3.9	0	0.0
	Region 1		Region 2		Region 3		Region 4		Region 5	
No Reported Risk	9		3		2		1			

* >1 reported risk per case possible. Cases with No Reported Risk excluded from denominator for risk percent calculations

Persons Diagnosed with P & S Syphilis
Regions 6-9
January - December 2017

	Region 6		Region 7		Region 8		Region 9	
	No.	%	No.	%	No.	%	No.	%
Gender								
Men	22	64.7	54	63.5	67	60.4	23	92.0
Women	12	35.3	31	36.5	43	38.7	2	8.0
Transgender women	-	-	-	-	1	0.9	-	-
Age at Diagnosis								
13-19	3	8.8	11	12.9	15	13.5	3	12.0
20-29	18	52.9	44	51.8	54	48.6	13	52.0
30-39	8	23.5	20	23.5	31	27.9	5	20.0
40+	5	14.7	10	11.8	11	9.9	4	16.0
Race/Ethnicity								
American Indian	-	-	1	1.2	1	0.9	1	4.0
Asian/PI	-	-	1	1.2	-	-	1	4.0
Black, NH	17	50.0	68	80.0	93	83.8	9	36.0
Hispanic/Latinx	-	-	2	2.4	1	0.9	2	8.0
White, NH	17	50.0	13	15.3	16	14.4	12	48.0
Regional Totals	34	100.0	85	100.0	111	100.0	25	100.0

	Region 6		Region 7		Region 8		Region 9	
	No.	%	No.	%	No.	%	No.	%
Cases with a Reported Risk*								
HRH	11	32.4	18	21.2	17	15.9	6	25.0
Heterosexual contact	15	44.1	37	43.5	66	61.7	3	12.5
IDU	2	5.9	0	0.0	1	0.9	0	0.0
Illegal drug use (non-injection)	18	52.9	28	32.9	39	36.4	4	16.7
Incarceration	3	8.8	5	5.9	18	16.8	0	0.0
MSM	11	32.4	35	41.2	31	29.0	18	75.0
MSM/IDU	0	0.0	0	0.0	0	0.0	0	0.0
Transactional sex	4	11.8	1	1.2	0	0.0	1	4.2
	Region 8		Region 9					
No Reported Risk	4		1					

* >1 reported risk per case possible. Cases with No Reported Risk excluded from denominator for risk percent calculations

Persons Diagnosed with Early Latent Syphilis
Regions 1-5
January - December 2017

	Region 1		Region 2		Region 3		Region 4		Region 5	
	No.	%	No.	%	No.	%	No.	%	No.	%
Gender										
Men	171	82.2	58	80.6	20	48.8	49	67.1	7	70.0
Women	31	14.9	11	15.3	20	48.8	23	31.5	3	30.0
Transgender women	6	2.9	3	4.2	1	2.4	1	1.4	-	-
Age at Diagnosis										
13-19	8	3.8	-	-	3	7.3	5	6.8	-	-
20-29	94	45.2	34	47.2	23	56.1	38	52.1	3	30.0
30-39	59	28.4	23	31.9	8	19.5	21	28.8	4	40.0
40+	47	22.6	15	20.8	7	17.1	9	12.3	3	30.0
Race/Ethnicity										
American Indian	-	-	-	-	1	2.4	1	1.4	-	-
Asian/PI	1	0.5	1	1.4	-	-	1	1.4	-	-
Black, NH	130	62.5	55	76.4	22	53.7	49	67.1	5	50.0
Hispanic/Latinx	16	7.7	1	1.4	1	2.4	1	1.4	-	-
White, NH	61	29.3	15	20.8	17	41.5	21	28.8	5	50.0
Regional Totals	208	100.0	72	100.0	41	100.0	73	100.0	10	100.0

	Region 1		Region 2		Region 3		Region 4		Region 5	
<i>Cases with a Reported Risk*</i>	No.	%	No.	%	No.	%	No.	%	No.	%
HRH	20	10.1	8	11.1	0	0.0	8	11.3	1	10.0
Heterosexual contact	54	27.3	18	25.0	28	68.3	31	43.7	4	40.0
IDU	0	0.0	0	0.0	2	4.9	1	1.4	0	0.0
Illegal drug use (non-injection)	46	23.2	16	22.2	10	24.4	20	28.2	1	10.0
Incarceration	8	4.0	9	12.5	4	9.8	6	8.5	0	0.0
MSM	143	72.2	50	69.4	14	34.1	32	45.1	5	50.0
MSM/IDU	5	2.5	1	1.4	1	2.4	0	0.0	0	0.0
Transactional sex	9	4.5	3	4.2	0	0.0	10	14.1	0	0.0
			Region 1		Region 4					
			No Reported Risk		10		2			

* >1 reported risk per case possible. Cases with No Reported Risk excluded from denominator for risk percent calculations

Persons Diagnosed with Early Latent Syphilis
Regions 6-9
January - December 2017

	Region 6		Region 7		Region 8		Region 9	
	No.	%	No.	%	No.	%	No.	%
Gender								
Men	11	61.1	46	50.5	32	61.5	16	88.9
Women	7	38.9	45	49.5	17	32.7	1	5.6
Transgender women	-	-	-	-	3	5.8	1	5.6
Age at Diagnosis								
13-19	-	-	19	20.9	5	9.6	1	5.6
20-29	9	50.0	52	57.1	28	53.8	6	33.3
30-39	5	27.8	17	18.7	11	21.2	9	50.0
40+	4	22.2	3	3.3	8	15.4	2	11.1
Race/Ethnicity								
Black, NH	14	77.8	68	74.7	46	88.5	8	44.4
Hispanic/Latinx	-	-	3	3.3	-	-	2	11.1
White, NH	4	22.2	20	22.0	6	11.5	8	44.4
Regional Totals	18	100.0	91	100.0	52	100.0	18	100.0

	<i>Region 6</i>		<i>Region 7</i>		<i>Region 8</i>		<i>Region 9</i>	
<i>Cases with a Reported Risk*</i>	No.	%	No.	%	No.	%	No.	%
HRH	7	38.9	17	19.1	8	15.4	0	0.0
Heterosexual contact	7	38.9	51	57.3	26	50.0	3	17.6
IDU	1	5.6	1	1.1	0	0.0	0	0.0
Illegal drug use (non-injection)	11	61.1	20	22.5	15	28.8	5	29.4
Incarceration	4	22.2	12	13.5	10	19.2	1	5.9
MSM	4	22.2	24	27.0	17	32.7	14	82.4
MSM/IDU	0	0.0	0	0.0	0	0.0	1	5.9
Transactional sex	2	11.1	3	3.4	0	0.0	0	0.0

	<i>Region 7</i>	<i>Region 9</i>
<i>No Reported Risk</i>	2	1

* >1 reported risk per case possible. Cases with No Reported Risk excluded from denominator for risk percent calculations

WOMEN & GIRLS HIV/AIDS



awareness day

MARCH 10



This year marks the 13th observance of National Women and Girls HIV/AIDS Awareness Day (NWGHAAD). The nationwide observance sheds light on the impact of HIV/AIDS on women and girls.

This year's theme is: *The Best Defense is a Good Defense*

In 2015, there were
approximately

232,692
Women

living with HIV in
the United States

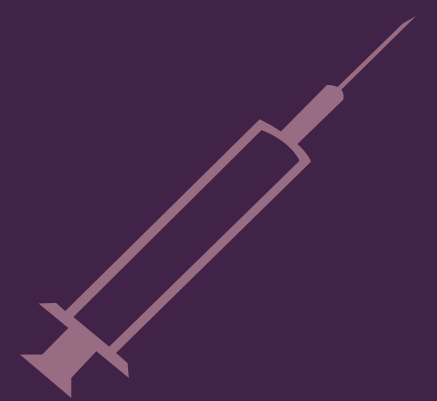
The majority of women acquire HIV through:



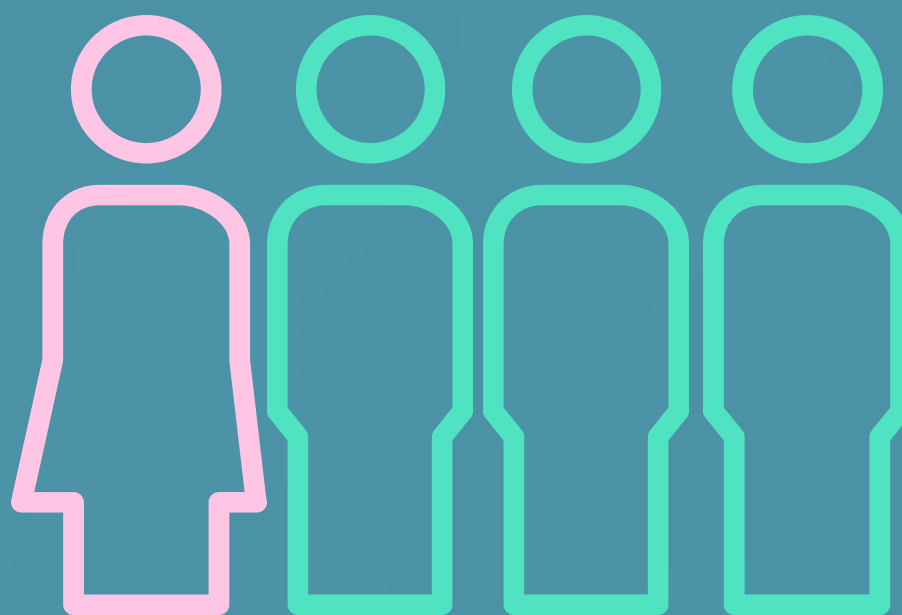
Heterosexual Sex

Or

Injection Drug Use



Nationally, **1** in **4**
persons living
with HIV is
female



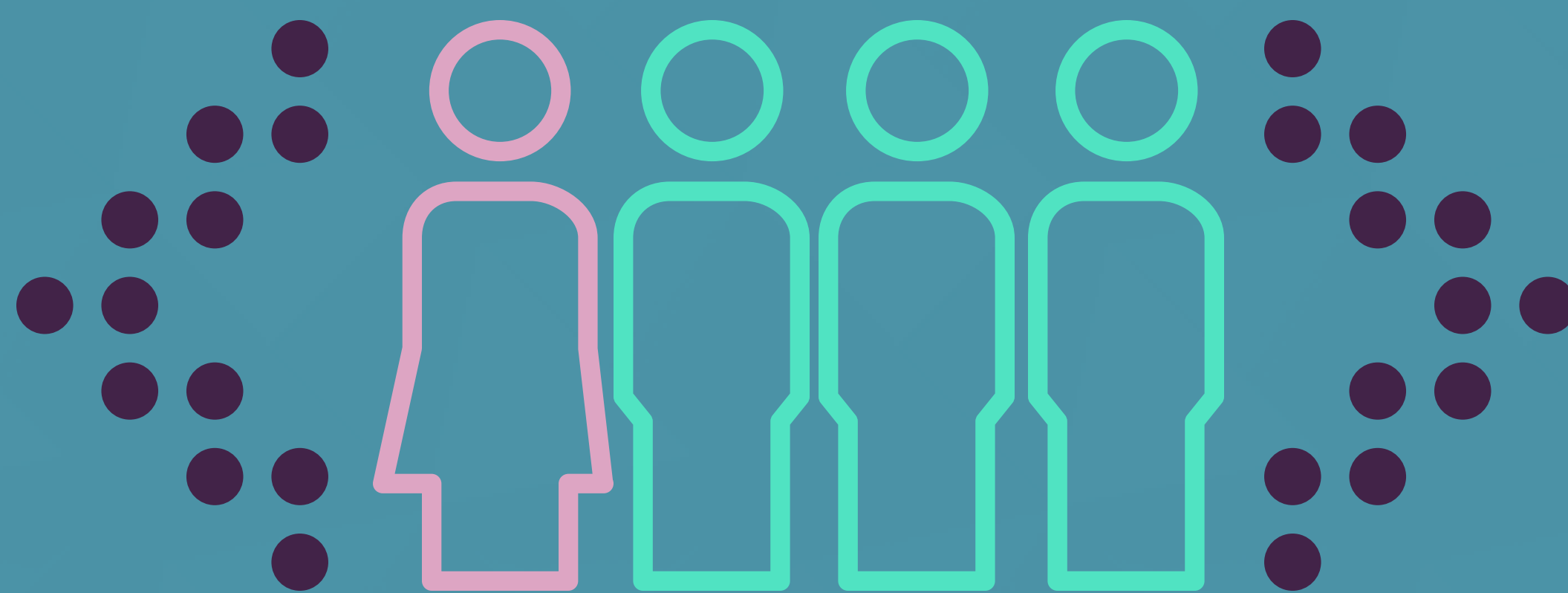
Black
women
and **other**
women of color
are
disproportionately
affected by the HIV
epidemic.

It is especially important **women of**
child-bearing age and **pregnant**
women receive HIV testing

If an HIV positive mother
receives appropriate
antiretroviral treatment during
pregnancy, labor, delivery, does
not breastfeed, and completes a
treatment course for the
newborn, there is **a less than 1%**
chance the mother will
transmit HIV to her child.

Between
2011-2016,
the annual
number of
new HIV
diagnoses
among
women has
declined by
15%

HIV/AIDS among Women and Girls in Louisiana



In 2017, **1 in 4** persons diagnosed with HIV in Louisiana were **women**

One in three
women newly diagnosed with HIV are 25-34 years old

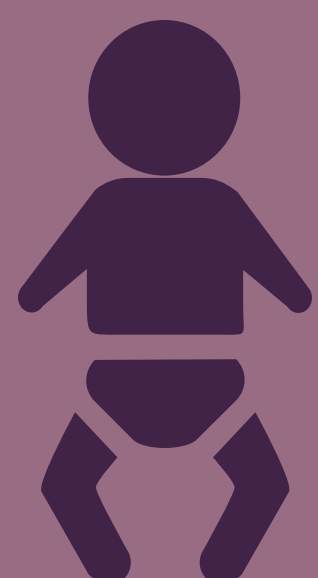
13% of women diagnosed with HIV in 2017 had **AIDS at HIV diagnosis**. These women have been diagnosed late in their disease progression.

Black women consistently make up the **largest proportion** of new HIV diagnoses among Louisiana women.

33% of Louisiana's female population are Black women...



...76% of new female HIV diagnoses are Black women



Approximately 150-160 HIV positive women give birth in Louisiana each year. Many of these women have no prenatal care. It is Louisiana Law that all pregnant women be tested for HIV at their first and third trimester prenatal care visits.

There are **6,273** women living with HIV in Louisiana. Over half live in the New Orleans and Baton Rouge regions.