

Louisiana HIV, AIDS, and Early Syphilis Surveillance

Quarterly Report

December 31, 2018



Louisiana Department of Health
Office of Public Health
STD/HIV Program (SHP)
1450 Poydras Street, Suite 2136
New Orleans, Louisiana 70112
504.568.7474
haprequest@la.gov
<http://dhh.louisiana.gov/hiv>
www.lahhub.org

Louisiana Department of Health
Office of Public Health
STD/HIV Surveillance Program

DeAnn Gruber, PhD, LCSW
Director, Bureau of Infectious Diseases

Chaquetta Johnson, DNP, MPH, APRN, WHNP-BC
Deputy Director - Operations

Sam Burgess, MA, MSHCM
Deputy Director - Programs

Tsegaye Assefa, MBA
Financial Operations Manager

Jacquelyn Naomi Bickham, MPA
Prevention Manager

Javone Charles, MPH
Field Operations Manager

Joy Ewell
CDC Lead Public Health Advisor

Jessica Fridge, MSPH
Surveillance Manager

Kira Radtke Friedrich, MPH
Care and Services Manager

Debbie Wendell, PhD, MPH
Data Management/Analysis Manager

Editor/Production:
Lauren Ostrenga, MPH
Catherine Desmarais, DrPH

HIV Field Epidemiologists:

Susan Brodie, MT(ASCP), MSPH, *Field Epidemiologist Supervisor*
Angela Everette, *Region 1*
Tarsia Williams, *Regions 1 & 3*
Gale Terry, LPN, *Regions 2 & 9*
Cheryl Edney, BS MT(ASCP), *Regions 4, 5, & 6*
Deneena Fulco, *Regions 7 & 8*

Regional STD Supervisors:

Michael Carter, *Region 1*
Gerald Dean Scott, *Region 2*
Javone Charles, *Region 3 & 9*
Ken May, *Region 4*
Patrick Williams, *Region 5 & 6*
Charles Jones, *Region 7*
Crissey Brown, *Region 8*

TABLE OF CONTENTS

Contents	Page
Surveillance Summary	1
Abbreviations	3
Louisiana: Persons Living with HIV Infection	4
Persons newly diagnosed with HIV	6
Persons newly diagnosed with AIDS	7
Persons diagnosed with Primary and Secondary Syphilis	8
Persons diagnosed with Early Latent Syphilis	9
Parish: Persons Living with HIV Infection	10
Persons diagnosed with Early Syphilis	11
Metro New Orleans: Persons Living with HIV Infection	12
Persons newly diagnosed with HIV and AIDS	14
Persons diagnosed with Early Syphilis	15
Metro Baton Rouge: Persons Living with HIV Infection	16
Persons newly diagnosed with HIV and AIDS	18
Persons diagnosed with Early Syphilis	19
Public Health Regions: Map & HIV/AIDS Counts	20
Region 1: Persons Living with HIV Infection	21
Region 2: Persons Living with HIV Infection	22
Region 3: Persons Living with HIV Infection	23
Region 4: Persons Living with HIV Infection	24
Region 5: Persons Living with HIV Infection	25
Region 6: Persons Living with HIV Infection	26
Region 7: Persons Living with HIV Infection	27
Region 8: Persons Living with HIV Infection	28
Region 9: Persons Living with HIV Infection	29
Regions 1-5: Persons newly diagnosed with HIV	30
Regions 6-9: Persons newly diagnosed with HIV	31
Regions 1-5: Persons newly diagnosed with AIDS	32
Regions 6-9: Persons newly diagnosed with AIDS	33
Regions 1-5: Persons diagnosed with Primary and Secondary Syphilis	34
Regions 6-9: Persons diagnosed with Primary and Secondary Syphilis	35
Regions 1-5: Persons diagnosed with Early Latent Syphilis	36
Regions 6-9: Persons diagnosed with Early Latent Syphilis	37
 List of Figures	
Louisiana: 10-Year Trends Persons Living with HIV Infection (2008-2017)	5
Louisiana: 10-Year Trends New HIV Diagnoses (2008-2017)	6
Louisiana: 10-Year Trends New AIDS Diagnoses (2008-2017)	7
Louisiana: 10-Year Trends P&S Syphilis Diagnoses (2008-2017)	8
Louisiana: 8-Year Trends Early Latent Syphilis Diagnoses (2010-2017)	9
 Surveillance Breakout	
2019 National Women and Girl's HIV/AIDS Awareness Day	38

Surveillance Summary

Data in this report includes cases diagnosed with HIV, AIDS, or Early Syphilis

- In 2017, Louisiana ranked **4th** in the nation for HIV case rates (22.1 per 100,000 population) and **10th** in the estimated number of HIV cases. The Baton Rouge MSA ranked **5th** and the New Orleans MSA ranked **4th** for HIV case rates (26.9 and 27.0 per 100,000, respectively), among the large metropolitan areas in the nation. The most recent *CDC HIV Surveillance Report* (vol. 29) was released in November 2018 and provided the 2017 rankings.
- According to the same report, Louisiana ranked **3rd** highest in state AIDS case rates (10.8 per 100,000) and **10th** in the number of estimated AIDS cases in 2017. The Baton Rouge metropolitan area ranked **2nd** in AIDS case rates (15.3 per 100,000) and the New Orleans metropolitan area ranked **6th** in AIDS case rates (12.5 per 100,000) in 2017 among the large metropolitan areas in the nation.
- In 2017, Louisiana ranked **3rd** in the nation for primary and secondary (P&S) syphilis case rates (14.5 per 100,000 population) according to the 2017 *CDC STD Surveillance Report*.
- As of December 31, 2018, a total of **22,180** persons were living with HIV infection (PLWH) in Louisiana; of these individuals, **11,180** persons (50%) have an AIDS diagnosis.
- In 2017, **1,018** new HIV cases were diagnosed in Louisiana. Of these cases, **30%** (n=302) occurred in Region 1 (New Orleans) and **21%** (n=214) occurred in Region 2 (Baton Rouge).
- As of December 31, 2018, a total of **1,137** persons were diagnosed with early syphilis* in Louisiana; **621** persons were diagnosed with P&S syphilis, and **516** persons were diagnosed with early non-P&S syphilis. Of the total early syphilis cases, **36%** (n=411) occurred in Region 1 (New Orleans) and **16%** (n=177) occurred in Region 2 (Baton Rouge).
- The primary risk factor for new HIV diagnoses in Louisiana is men who have sex with men (MSM). In 2017, of the persons who reported a risk factor, **57%** reported being MSM, and an additional **2%** reported being MSM and an injection drug user (IDU). As of December 31, 2018, **45%** of all people living with HIV infection in Louisiana were MSM.
- The primary risk factor for early syphilis diagnoses in Louisiana is men who sex with men (MSM). As of December 31, 2018, of the persons who reported a risk factor, **54%** reported being MSM, and **51%** reported engaging in heterosexual activity. *Persons could report multiple risk factors for syphilis diagnoses.*
- In Louisiana, **74%** of new HIV cases, **72%** of new AIDS cases, and **74%** of the early syphilis diagnoses were among men.
- African Americans in Louisiana are experiencing a severe health disparity in regards to HIV and STDs. In 2017, **69%** of newly diagnosed HIV cases and **71%** of newly diagnosed AIDS cases were among African Americans. As of December 31, 2018, **67%** of early syphilis cases were among African Americans. African Americans make up only 32% of Louisiana's overall population.
- A large percentage of new HIV and syphilis diagnoses occurred among adolescents and young adults. In 2017, **25%** of all new HIV diagnoses occurred among persons 13-24 years old and an additional **37%** occurred among persons 25-34 years old. As of December 31, 2018, **28%** of all early syphilis diagnoses occurred among persons 13-24 years old and an additional **43%** occurred among persons 25-34 years old.

* A syphilis diagnosis with less than one year duration is considered to be "early syphilis." This designation covers the primary, secondary, and early non-P&S stages of syphilis.

New Quarterly Report Format:

The format of the Quarterly Report has been redesigned starting Third Quarter 2017. Besides for the removal of cumulative HIV/AIDS cases and cumulative HIV/AIDS deaths by state and region, the core content of the Quarterly Report remains the same with some new modifications described below.

In efforts to more accurately present the data as it relates to gender identity, tables for persons living with HIV infection now include race/ethnicity and exposure category stratified by current gender identity (i.e. men, women, trans women, & trans men) rather than sex at birth.

In addition, there are three new HIV/AIDS exposure categories: “Trans women- sex with men,” “Trans women- sex with men/injection drug user (IDU),” and “Female presumed heterosexual contact” (FPHC). In previous versions of the Quarterly Report, trans women who indicated engaging in sex with men would have their HIV exposure classified as “Men who has sex with men” (MSM) or “MSM/IDU.” The new exposure categories (“Trans women- sex with men” & “Trans women- sex with men/IDU”) acknowledge and highlight the differences in gender identity between gay and bisexual men versus trans women as well as strive to better describe the populations affected by HIV in Louisiana.

In previous Quarterly Reports, a significant number of HIV-positive women who did not meet the stringent “high risk” criteria for “Heterosexual contact” were classified as “No identified risk.” In an effort to better capture and present heterosexual transmission of HIV among women, the STD/HIV Program has used an algorithm from the Centers for Disease Control that re-categorizes many women formerly classified as “No identified risk” as now meeting the exposure criteria for FPHC. The primary criteria for FPHC includes: sex at birth is female, answered ‘yes’ to sex with men, answered ‘no’ to injection drug use, and has no other documentation that would suggest an alternative mode of HIV acquisition.

Changes to Syphilis Case Definition

The Quarterly Report includes revisions to the surveillance case definition for syphilis as approved by the Council of State and Territorial Epidemiologists (CSTE) effective January 1, 2018. Of note, the nomenclature for “Early latent syphilis” has been changed to “Early non-primary non-secondary syphilis.” Throughout the Quarterly Report it has been abbreviated to “Early non-P&S syphilis.” Please refer to the following documentation for additional information on all other syphilis case definition revisions: <https://www.cdc.gov/std/stats/DCL-syph-case-def-sept-4-2017.pdf>.

Time Periods for this Quarterly Report (Fourth Quarter 2018 Report):

Persons Living with HIV Infection – As of December 31, 2018
 New HIV Diagnoses – Calendar Year 2017 (Updated from 3rd Quarter Report)
 New AIDS Diagnoses – Calendar Year 2017 (Updated from 3rd Quarter Report)
 New P&S Syphilis Diagnoses – January 1 to December 31, 2018 (Calendar Year 2018)
 New Early Latent Syphilis Diagnoses – January 1 to December 31, 2018 (Calendar Year 2018)

Future Quarterly Report:

First Quarter 2019 Report: Release in May 2019
 Persons Living with HIV Infection, As of March 31, 2019
 HIV and AIDS Diagnoses, Calendar Year 2018
 P&S Syphilis and Early Latent Syphilis Diagnoses, First Quarter 2019 (January-March 2019)

Abbreviations

Asian/PI	Asian/Pacific Islander
CDC	Centers for Disease Control and Prevention
FPHC	Female presumed heterosexual contact
FSF	Female sex with female
HRH	High risk heterosexual contact
IDU	Injection drug user
MSM	Men who have sex with men
MSM/IDU	Men who have sex with men and injection drug user
NH	Non-Hispanic
PLWH	Persons living with HIV
P&S	Primary and secondary syphilis

***Persons Living with HIV Infection
Louisiana
as of December 31, 2018***

22,180 persons are currently living with HIV/AIDS in Louisiana.

Number of persons living with HIV: **11,000**

Number of persons living with AIDS: **11,180**

	No.	%
Gender		
Men	15,533	70.0
Women	6,347	28.6
Trans women	298	1.3
Trans men	2	0.0
Current Age		
0-12	35	0.2
13-19	138	0.6
20-24	843	3.8
25-29	2,021	9.1
30-34	2,428	10.9
35-39	2,572	11.6
40-44	2,585	11.7
45-49	2,596	11.7
50-54	2,895	13.1
55-59	2,760	12.4
60+	3,307	14.9
Total	22,180	100.0

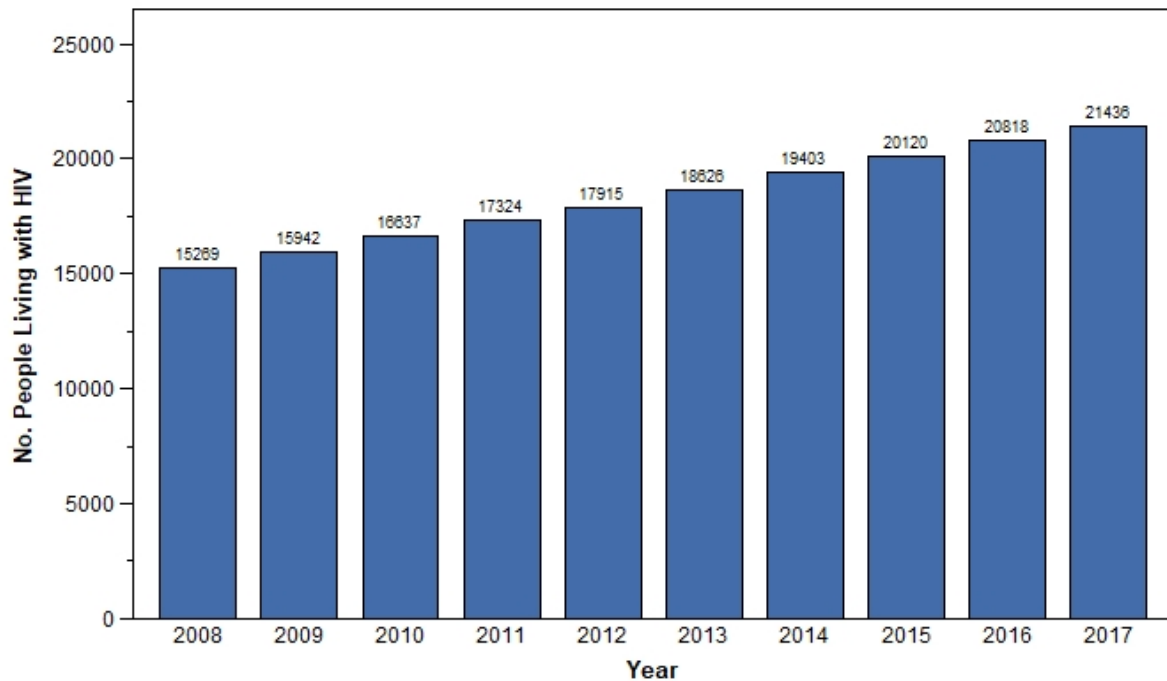
	Men		Women		Trans women		Trans men		LA State Totals	
	No.	%	No.	%	No.	%	No.	%	No.	%
Race/Ethnicity										
American Indian	32	0.2	9	0.1	-	-	-	-	41	0.2
Asian/PI	71	0.5	16	0.3	2	0.7	-	-	89	0.4
Black, NH	9,797	63.1	5,175	81.5	247	82.9	2	100.0	15,221	68.6
Hispanic/Latinx	839	5.4	193	3.0	19	6.4	-	-	1,051	4.7
Multi-race	113	0.7	39	0.6	2	0.7	-	-	154	0.7
White, NH	4,675	30.1	910	14.3	28	9.4	-	-	5,613	25.3
Unknown	6	0.0	5	0.1	-	-	-	-	11	0.0
Total	15,533	100.0	6,347	100.0	298	100.0	2	100.0	22,180	100.0

**Persons Living with HIV Infection
Louisiana
as of December 31, 2018**

Exposure Category	Men		Women		Trans women		LA State Totals	
	No.	%	No.	%	No.	%	No.	%
MSM	8,762	65.6	-	-	-	-	8,762	44.5
Trans women - sex with men	-	-	-	-	263	88.6	263	1.3
MSM/IDU	827	6.2	-	-	-	-	827	4.2
Trans women - sex with men/IDU	-	-	-	-	30	10.1	30	0.2
IDU	1,064	8.0	666	11.1	2	0.7	1,732	8.8
HRH	2,578	19.3	4,518	75.0	2	0.7	7,098	36.1
FPHC	-	-	704	11.7	-	-	704	3.6
Transfusion/Hemophilia	34	0.3	28	0.5	-	-	62	0.3
Perinatal	94	0.7	109	1.8	-	-	203	1.0
Confirmed Other	-	-	1	0.0	-	-	1	0.0
Total	13,359	100.0	6,026	100.0	297	100.0	19,682	100.0

	<i>Men</i>	<i>Women</i>	<i>Trans women</i>	<i>Trans men</i>	<i>Total</i>
No Reported Risk	2,174	321	1	2	2,498

**10-Year Trends in Persons Living with HIV Infection
Louisiana, 2008-2017**



Persons Newly Diagnosed with HIV Louisiana, January - December 2017

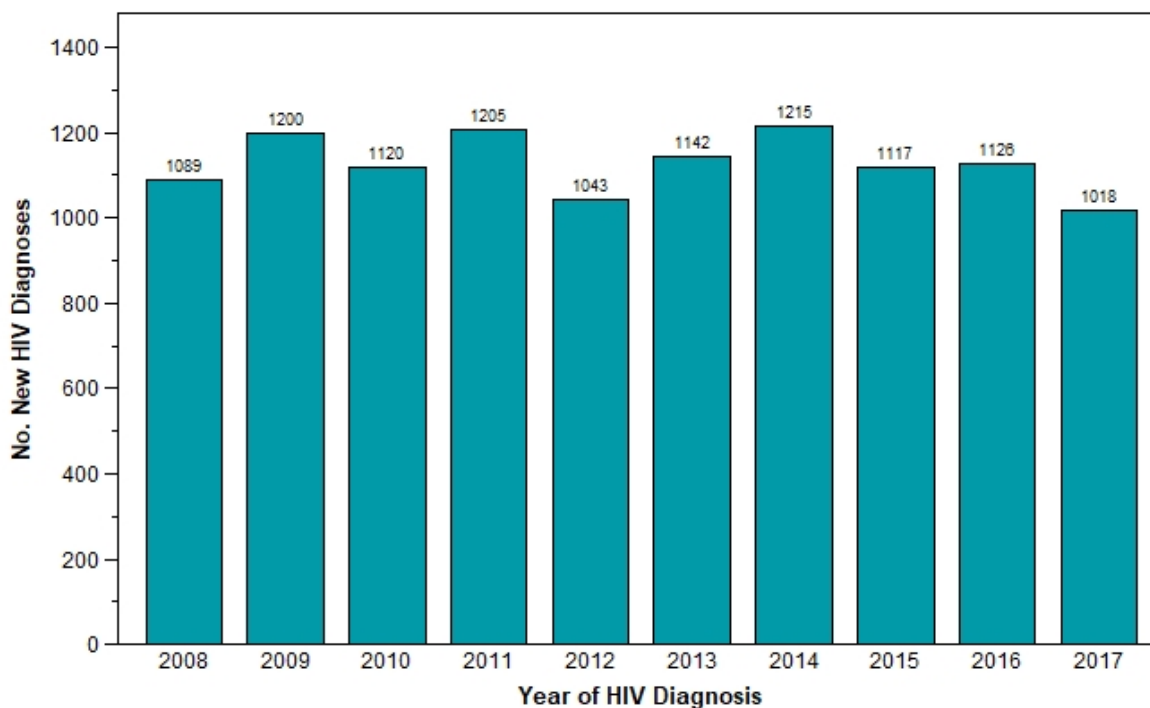
In 2017, **1,018** persons were newly diagnosed with HIV in Louisiana.

	No.	%
Gender		
Men	753	74.0
Women	241	23.7
Trans women	24	2.4
Age at Diagnosis		
13-24	251	24.7
25-34	372	36.5
35-44	171	16.8
45+	224	22.0
Race/Ethnicity		
American Indian	3	0.3
Asian/PI	3	0.3
Black, NH	700	68.8
Hispanic/Latinx	72	7.1
Multi-race	5	0.5
White, NH	235	23.1
Total	1,018	100.0

	No.	%
Exposure Category		
MSM	487	57.0
Trans women - sex with men	22	2.6
MSM/IDU	16	1.9
Trans women - sex with men/IDU	2	0.2
IDU	41	4.8
HRH	237	27.7
FPHC	50	5.8
Total	855	100.0

No Reported Risk 163

10-Year Trends in New HIV Diagnoses Louisiana, 2008-2017



Persons Newly Diagnosed with AIDS Louisiana, January - December 2017

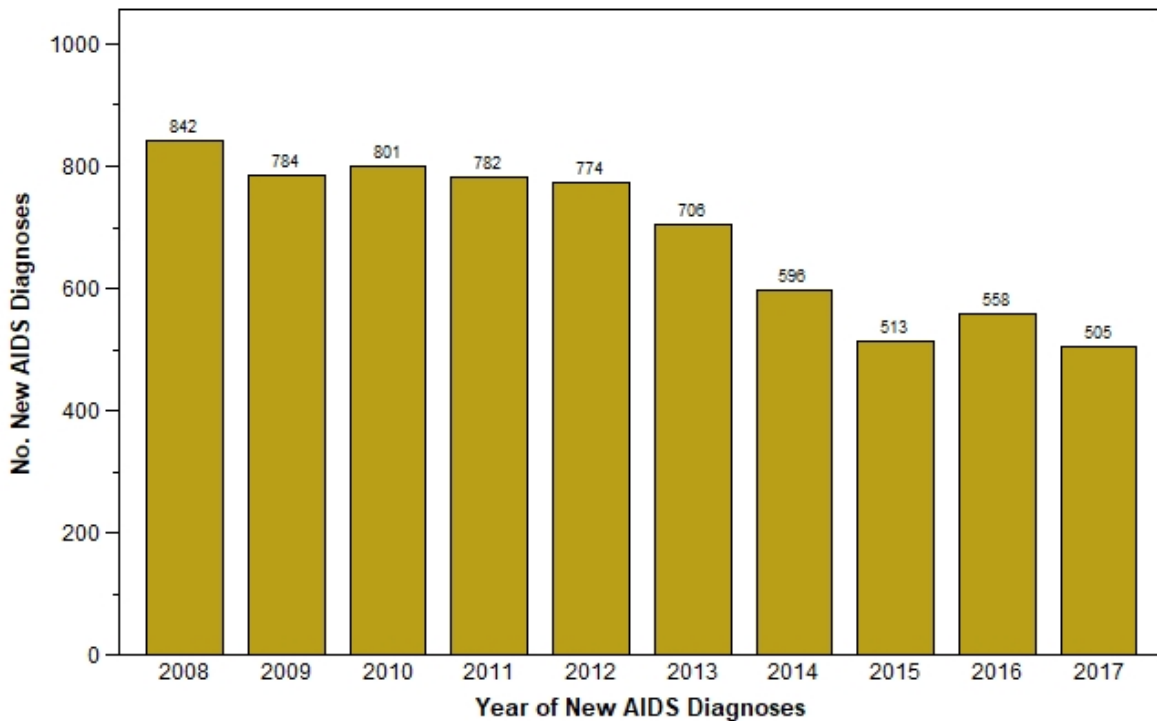
In 2017, **505** persons were newly diagnosed with AIDS in Louisiana.

	No.	%
Gender		
Men	361	71.5
Women	135	26.7
Trans women	9	1.8
Age at Diagnosis		
0-12	3	0.6
13-24	52	10.3
25-34	163	32.3
35-44	111	22.0
45+	176	34.9
Race/Ethnicity		
Asian/PI	2	0.4
Black, NH	360	71.3
Hispanic/Latinx	29	5.7
Multi-race	3	0.6
White, NH	111	22.0
Total	505	100.0

	No.	%
Exposure Category		
MSM	202	47.1
Trans women - sex with men	8	1.9
MSM/IDU	7	1.6
Trans women - sex with men/IDU	1	0.2
IDU	28	6.5
HRH	158	36.8
FPHC	19	4.4
Transfusion/Hemophilia	1	0.2
Perinatal	5	1.2
Total	429	100.0

No Reported Risk 76

10-Year Trends in New AIDS Diagnoses Louisiana, 2008-2017



**Persons Diagnosed with P&S Syphilis
Louisiana, January - December 2018**

Between January 1 and December 31, 2018, **621** persons were diagnosed with P&S Syphilis in Louisiana.

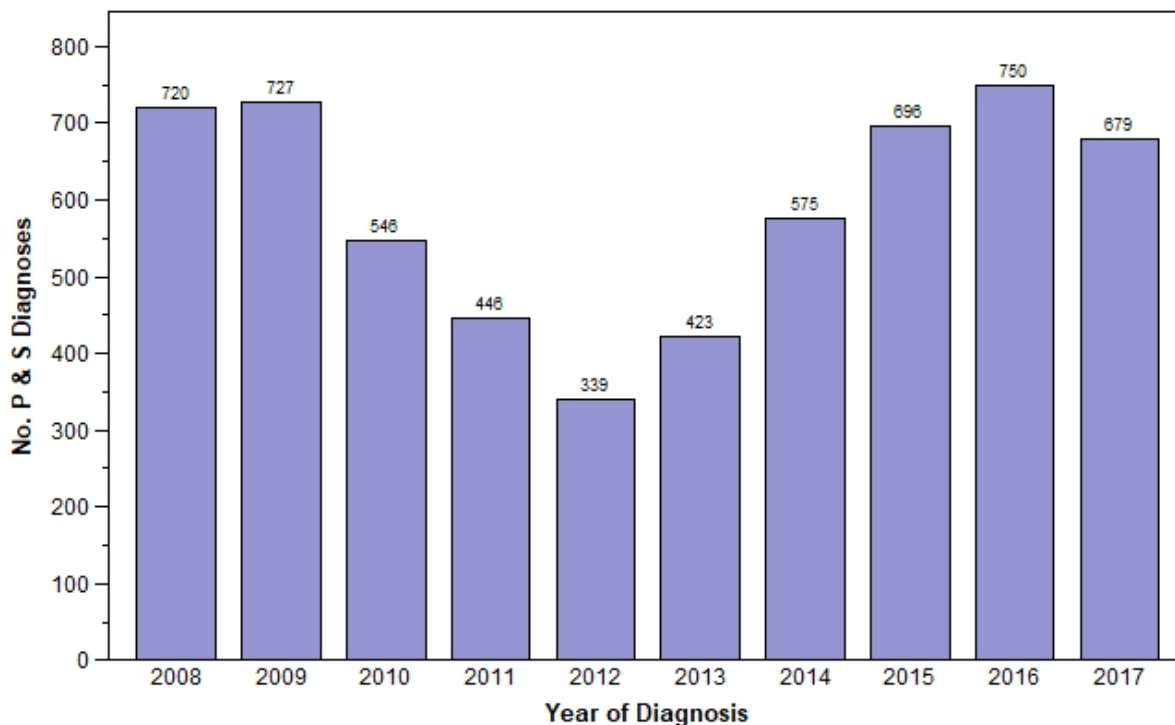
	No.	%
Gender		
Men	459	73.9
Women	151	24.3
Trans women	11	1.8
Age at Diagnosis		
0-12	1	0.2
13-19	49	7.9
20-29	300	48.3
30-39	164	26.4
40+	107	17.2
Race/Ethnicity		
American Indian	3	0.5
Asian/PI	4	0.6
Black, NH	405	65.2
Hispanic/Latinx	12	1.9
White, NH	197	31.7
State Total	621	100.0

<i>Cases with a Reported Risk*</i>	No.	%
FSF	22	3.7
HRH	121	20.3
Heterosexual contact	206	34.6
IDU	15	2.5
Illegal drug use (all types)	212	35.6
Incarceration	58	9.7
MSM	299	50.2
MSM/IDU	5	0.8
Transactional sex	39	6.5

No Reported Risk 25

* >1 reported risk per case possible. Cases with No Reported Risk excluded from denominator for risk percent calculations

**10-Year Trends in P & S Syphilis Diagnoses
Louisiana, 2008-2017**



Persons Diagnosed with Early non-P&S Syphilis
Louisiana, January - December 2018

Between January 1 and December 31, 2018, **516** persons were diagnosed with Early non-P&S Syphilis in Louisiana.

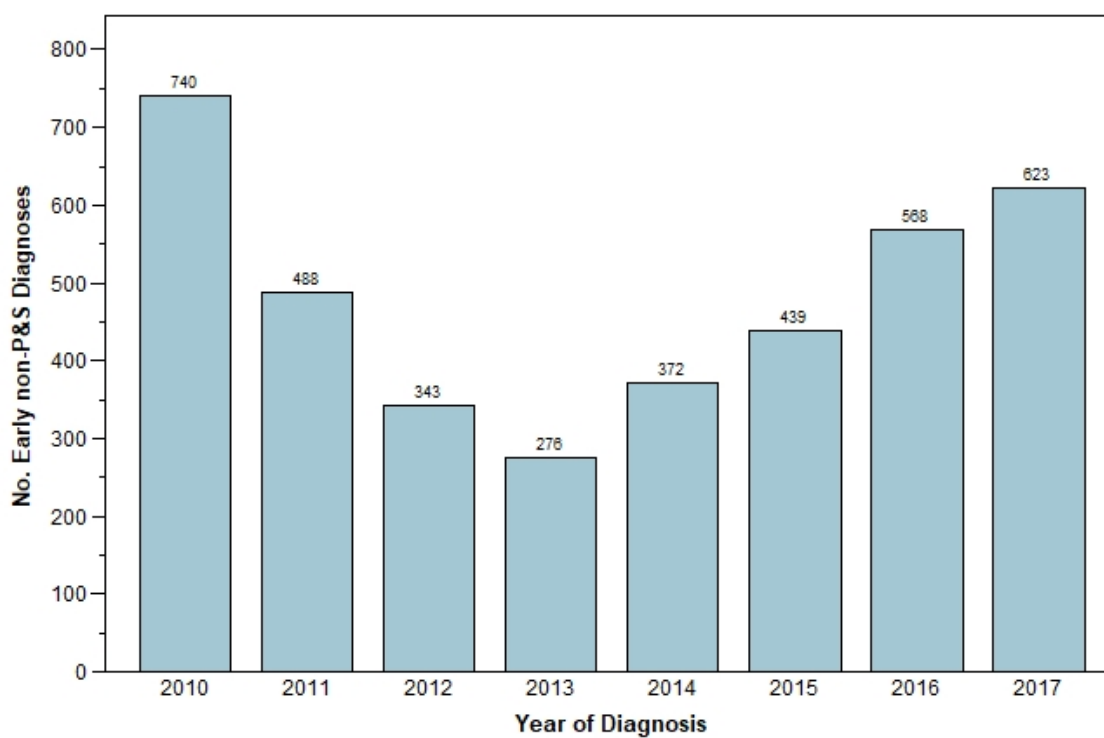
	No.	%
Gender		
Men	368	71.3
Women	136	26.4
Trans women	12	2.3
Age at Diagnosis		
13-19	38	7.4
20-29	228	44.2
30-39	145	28.1
40+	105	20.3
Race/Ethnicity		
American Indian	2	0.4
Asian/PI	3	0.6
Black, NH	352	68.2
Hispanic/Latinx	25	4.8
White, NH	134	26.0
State Total	516	100.0

<i>Cases with a Reported Risk*</i>	No.	%
FSF	8	1.6
HRH	74	14.6
Heterosexual contact	166	32.7
IDU	7	1.4
Illegal drug use (all types)	150	29.6
Incarceration	42	8.3
MSM	289	57.0
MSM/IDU	5	1.0
Transactional sex	31	6.1

No Reported Risk 9

* >1 reported risk per case possible. Cases with No Reported Risk excluded from denominator for risk percent calculations

8-Year Trends in Early non-P&S Syphilis Diagnoses
Louisiana, 2010-2017



***Persons Living with HIV Infection by Parish
as of December 31, 2018***

<i>Parish</i>	<i>No. PLWH</i>	<i>Parish</i>	<i>No. PLWH</i>
Acadia	131	Sabine	21
Allen	217	St. Bernard	198
Ascension	254	St. Charles	119
Assumption	38	St. Helena	22
Avoyelles	159	St. James	82
Beauregard	54	St. John the Baptist	183
Bienville	35	St. Landry	316
Bossier	274	St. Martin	114
Caddo	1,277	St. Mary	104
Calcasieu	718	St. Tammany	524
Caldwell	20	Tangipahoa	449
Cameron	3	Tensas	32
Catahoula	32	Terrebonne	236
Claiborne	80	Union	41
Concordia	50	Vermilion	109
De Soto	62	Vernon	69
East Baton Rouge	4,145	Washington	216
East Carroll	23	Webster	83
East Feliciana	192	West Baton Rouge	117
Evangeline	98	West Carroll	17
Franklin	53	West Feliciana	132
Grant	54	Winn	23
Iberia	135		
Iberville	292		
Jackson	19		
Jefferson	2,140		
Jefferson Davis	72		
LaSalle	55		
Lafayette	866		
Lafourche	163		
Lincoln	107		
Livingston	230		
Madison	39		
Morehouse	66		
Natchitoches	129		
Orleans	5,279		
Ouachita	701		
Plaquemines	50		
Pointe Coupee	56		
Rapides	546		
Red River	16		
Richland	43		

Total PLWH: 22,180

Persons Diagnosed with Early Syphilis* by Parish
January - December 2018

<i>Parish</i>	<i>No. Diagnoses</i>	<i>Parish</i>	<i>No. Diagnoses</i>
Acadia	7	Sabine	2
Allen	0	St. Bernard	9
Ascension	9	St. Charles	5
Assumption	0	St. Helena	0
Avoyelles	6	St. James	3
Beauregard	0	St. John the Baptist	5
Bienville	2	St. Landry	10
Bossier	19	St. Martin	5
Caddo	116	St. Mary	4
Calcasieu	13	St. Tammany	22
Caldwell	0	Tangipahoa	14
Cameron	0	Tensas	0
Catahoula	1	Terrebonne	7
Claiborne	1	Union	5
Concordia	1	Vermilion	7
De Soto	1	Vernon	5
East Baton Rouge	149	Washington	5
East Carroll	1	Webster	6
East Feliciana	0	West Baton Rouge	9
Evangeline	5	West Carroll	1
Franklin	1	West Feliciana	0
Grant	4	Winn	1
Iberia	9		
Iberville	8		
Jackson	6		
Jefferson	112		
Jefferson Davis	3		
LaSalle	2		
Lafayette	25		
Lafourche	4		
Lincoln	22		
Livingston	7		
Madison	4		
Morehouse	12		
Natchitoches	7		
Orleans	286		
Ouachita	54		
Plaquemines	4		
Pointe Coupee	2		
Rapides	99		
Red River	7		
Richland	3		

Total Early Syphilis Cases: 1,137

* A syphilis diagnosis with less than one year duration is considered "early syphilis." This designation covers the primary, secondary, and early non-P&S stages of syphilis.

**Persons Living with HIV Infection
Metro New Orleans
as of December 31, 2018**

Jefferson, Orleans, Plaquemines, St. Bernard, St. Charles, St. James, St. John the Baptist, & St. Tammany Parishes

8,575 persons are currently living with HIV/AIDS in Metro New Orleans.

Number of persons living with HIV: **4,227**

Number of persons living with AIDS: **4,348**

	No.	%
Gender		
Men	6,264	73.0
Women	2,149	25.1
Trans women	160	1.9
Trans men	2	0.0
Current Age		
0-12	11	0.1
13-19	53	0.6
20-24	282	3.3
25-29	746	8.7
30-34	931	10.9
35-39	940	11.0
40-44	975	11.4
45-49	947	11.0
50-54	1,155	13.5
55-59	1,139	13.3
60+	1,396	16.3
Total	8,575	100.0

	Men		Women		Trans women		Trans men		Metro New Orleans Totals	
Race/Ethnicity	No.	%	No.	%	No.	%	No.	%	No.	%
American Indian	7	0.1	1	0.0	-	-	-	-	8	0.1
Asian/PI	39	0.6	6	0.3	2	1.3	-	-	47	0.5
Black, NH	3,596	57.4	1,722	80.1	130	81.3	2	100.0	5,450	63.6
Hispanic/Latinx	445	7.1	127	5.9	14	8.8	-	-	586	6.8
Multi-race	39	0.6	13	0.6	1	0.6	-	-	53	0.6
White, NH	2,134	34.1	277	12.9	13	8.1	-	-	2,424	28.3
Unknown	4	0.1	3	0.1	-	-	-	-	7	0.1
Total	6,264	100.0	2,149	100.0	160	100.0	2	100.0	8,575	100.0

***Persons Living with HIV Infection
Metro New Orleans
as of December 31, 2018***

Jefferson, Orleans, Plaquemines, St. Bernard, St. Charles, St. James, St. John the Baptist, & St. Tammany Parishes

<i>Exposure Category</i>	Men		Women		Trans women		Metro New Orleans Totals	
	No.	%	No.	%	No.	%	No.	%
MSM	3,864	70.0	-	-	-	-	3,864	50.2
Trans women - sex with men	-	-	-	-	143	89.4	143	1.9
MSM/IDU	312	5.7	-	-	-	-	312	4.1
Trans women - sex with men/IDU	-	-	-	-	16	10.0	16	0.2
IDU	345	6.3	215	10.7	-	-	560	7.3
HRH	953	17.3	1,514	75.1	1	0.6	2,468	32.1
FPHC	-	-	231	11.5	-	-	231	3.0
Transfusion/Hemophilia	15	0.3	14	0.7	-	-	29	0.4
Perinatal	31	0.6	43	2.1	-	-	74	1.0
<i>Total</i>	5,520	100.0	2,017	100.0	160	100.0	7,697	100.0

	<i>Men</i>	<i>Women</i>	<i>Trans women</i>	<i>Trans men</i>	<i>Total</i>
No Reported Risk	744	132	0	2	878

Persons Newly Diagnosed with HIV and AIDS Metro New Orleans

Jefferson, Orleans, Plaquemines, St. Bernard, St. Charles, St. James, St. John the Baptist, & St. Tammany Parishes

Persons Diagnosed with HIV January - December 2017

In 2017, **333** persons were newly diagnosed with HIV in Metro New Orleans.

	No.	%		No.	%
Gender			Exposure Category		
Men	240	72.1	MSM	163	54.9
Women	83	24.9	Trans women - sex with men	8	2.7
Trans women	10	3.0	MSM/IDU	4	1.3
Age at Diagnosis			Trans women - sex with men/IDU	2	0.7
13-24	74	22.2	IDU	14	4.7
25-34	126	37.8	HRH	90	30.3
35-44	67	20.1	FPHC	16	5.4
45+	66	19.8	Total	297	100.0
Race/Ethnicity			<u>No Reported Risk 36</u>		
American Indian	1	0.3			
Black, NH	229	68.8			
Hispanic/Latinx	40	12.0			
Multi-race	2	0.6			
White, NH	61	18.3			
Total	333	100.0			

Persons Diagnosed with AIDS January - December 2017

In 2017, **154** persons were newly diagnosed with AIDS in Metro New Orleans.

	No.	%		No.	%
Gender			Exposure Category		
Men	107	69.5	MSM	64	45.4
Women	43	27.9	Trans women - sex with men	3	2.1
Trans women	4	2.6	MSM/IDU	4	2.8
Age at Diagnosis			Trans women - sex with men/IDU	1	0.7
13-24	20	13.0	IDU	9	6.4
25-34	41	26.6	HRH	52	36.9
35-44	40	26.0	FPHC	8	5.7
45+	53	34.4	Total	141	100.0
Race/Ethnicity			<u>No Reported Risk 13</u>		
Black, NH	102	66.2			
Hispanic/Latinx	16	10.4			
Multi-race	2	1.3			
White, NH	34	22.1			
Total	154	100.0			

Persons Diagnosed with Early Syphilis Metro New Orleans

Jefferson, Orleans, Plaquemines, St. Bernard, St. Charles, St. James, St. John the Baptist, & St. Tammany Parishes

Persons Diagnosed with P&S Syphilis January - December 2018

Between January 1 through December 31, 2018, **206** persons were newly diagnosed with P&S Syphilis in Metro New Orleans.

	No.	%
Gender		
Men	182	88.3
Women	18	8.7
Trans women	6	2.9
Age at Diagnosis		
13-19	10	4.9
20-29	92	44.7
30-39	55	26.7
40+	49	23.8
Race/Ethnicity		
American Indian	3	1.5
Asian/PI	3	1.5
Black, NH	110	53.4
Hispanic/Latinx	9	4.4
White, NH	81	39.3
Total	206	100.0

<i>Cases with a Reported Risk*</i>	No.	%
FSF	1	0.5
HRH	22	11.2
Heterosexual contact	35	17.9
IDU	1	0.5
Illegal drug use (all types)	75	38.3
Incarceration	9	4.6
MSM	150	76.5
MSM/IDU	1	0.5
Transactional sex	6	3.1

No Reported Risk 10

Persons Diagnosed with Early non-P&S Syphilis January - December 2018

Between January 1 through December 31, 2018, **240** persons were newly diagnosed with Early non-P&S Syphilis in Metro New Orleans.

	No.	%
Gender		
Men	203	84.6
Women	30	12.5
Trans women	7	2.9
Age at Diagnosis		
13-19	5	2.1
20-29	99	41.3
30-39	84	35.0
40+	52	21.7
Race/Ethnicity		
American Indian	1	0.4
Asian/PI	3	1.3
Black, NH	153	63.8
Hispanic/Latinx	17	7.1
White, NH	66	27.5
Total	240	100.0

<i>Case with a Reported Risk*</i>	No.	%
FSF	2	0.8
HRH	23	9.7
Heterosexual contact	45	19.0
IDU	1	0.4
Illegal drug use (all types)	83	35.0
Incarceration	11	4.6
MSM	182	76.8
MSM/IDU	4	1.7
Transactional sex	9	3.8

No Reported Risk 3

* >1 reported risk per case possible. Cases with No Reported Risk excluded from denominator for risk percent calculations

**Persons Living with HIV Infection
Metro Baton Rouge
as of December 31, 2018**

Ascension, East Baton Rouge, East Feliciana, Iberville, Livingston, Pointe Coupee, St. Helena, West Baton Rouge, & West Feliciana Parishes

5,440 persons are currently living with HIV/AIDS in Metro Baton Rouge.

Number of persons living with HIV: **2,660**

Number of persons living with AIDS: **2,780**

	No.	%
Gender		
Men	3,436	63.2
Women	1,930	35.5
Trans women	74	1.4
Current Age		
0-12	12	0.2
13-19	29	0.5
20-24	192	3.5
25-29	489	9.0
30-34	597	11.0
35-39	700	12.9
40-44	662	12.2
45-49	689	12.7
50-54	660	12.1
55-59	643	11.8
60+	767	14.1
Total	5,440	100.0

	Men		Women		Trans women		Metro Baton Rouge Totals	
	No.	%	No.	%	No.	%	No.	%
Race/Ethnicity								
American Indian	5	0.1	-	-	-	-	5	0.1
Asian/PI	9	0.3	5	0.3	-	-	14	0.3
Black, NH	2,682	78.1	1,719	89.1	69	93.2	4,470	82.2
Hispanic/Latinx	79	2.3	24	1.2	2	2.7	105	1.9
Multi-race	18	0.5	10	0.5	-	-	28	0.5
White, NH	643	18.7	172	8.9	3	4.1	818	15.0
Total	3,436	100.0	1,930	100.0	74	100.0	5,440	100.0

**Persons Living with HIV Infection
Metro Baton Rouge
as of December 31, 2018**

Ascension, East Baton Rouge, East Feliciana, Iberville, Livingston, Pointe Coupee, St. Helena, West Baton Rouge, & West Feliciana Parishes

Exposure Category	Men		Women		Trans women		Metro Baton Rouge Totals	
	No.	%	No.	%	No.	%	No.	%
MSM	1,612	54.3	-	-	-	-	1,612	32.9
Trans women - sex with men	-	-	-	-	64	86.5	64	1.3
MSM/IDU	183	6.2	-	-	-	-	183	3.7
Trans women - sex with men/IDU	-	-	-	-	8	10.8	8	0.2
IDU	347	11.7	213	11.5	1	1.4	561	11.4
HRH	789	26.6	1,436	77.2	1	1.4	2,226	45.4
FPHC	-	-	175	9.4	-	-	175	3.6
Transfusion/Hemophilia	5	0.2	6	0.3	-	-	11	0.2
Perinatal	33	1.1	29	1.6	-	-	62	1.3
Total	2,969	100.0	1,859	100.0	74	100.0	4,902	100.0

	<i>Men</i>	<i>Women</i>	<i>Trans women</i>	<i>Total</i>
No Reported Risk	467	71	0	538

Persons Newly Diagnosed with HIV and AIDS Metro Baton Rouge

Ascension, East Baton Rouge, East Feliciana, Iberville, Livingston, Pointe Coupee, St. Helena, West Baton Rouge, & West Feliciana Parishes

Persons Diagnosed with HIV January - December 2017

In 2017, **226** persons were newly diagnosed with HIV in Metro Baton Rouge.

	No.	%		No.	%
Gender			Exposure Category		
Men	160	70.8	MSM	100	53.8
Women	59	26.1	Trans women - sex with men	7	3.8
Trans women	7	3.1	MSM/IDU	2	1.1
Age at Diagnosis			IDU	3	1.6
13-24	50	22.1	HRH	59	31.7
25-34	84	37.2	FPHC	15	8.1
35-44	35	15.5	Total	186	100.0
45+	57	25.2			
Race/Ethnicity			<u>No Reported Risk 40</u>		
American Indian	1	0.4			
Black, NH	188	83.2			
Hispanic/Latinx	8	3.5			
Multi-race	1	0.4			
White, NH	28	12.4			
Total	226	100.0			

Persons Diagnosed with AIDS January - December 2017

In 2017, **128** persons were newly diagnosed with AIDS in Metro Baton Rouge.

	No.	%		No.	%
Gender			Exposure Category		
Men	81	63.3	MSM	39	36.1
Women	45	35.2	Trans women - sex with men	2	1.9
Trans women	2	1.6	MSM/IDU	1	0.9
Age at Diagnosis			IDU	7	6.5
0-12	2	1.6	HRH	51	47.2
13-24	11	8.6	FPHC	5	4.6
25-34	51	39.8	Perinatal	3	2.8
35-44	24	18.8	Total	108	100.0
45+	40	31.3			
Race/Ethnicity			<u>No Reported Risk 20</u>		
Black, NH	107	83.6			
Hispanic/Latinx	2	1.6			
White, NH	19	14.8			
Total	128	100.0			

Persons Diagnosed with Early Syphilis Metro Baton Rouge

*Ascension, East Baton Rouge, East Feliciana, Iberville, Livingston, Pointe Coupee, St. Helena, West Baton Rouge, &
West Feliciana Parishes*

Persons Diagnosed with P&S Syphilis January - December 2018

Between January 1 through December 31, 2018, **106** persons were newly diagnosed with P&S Syphilis in Metro Baton Rouge.

	No.	%
Gender		
Men	78	73.6
Women	25	23.6
Trans women	3	2.8
Age at Diagnosis		
13-19	10	9.4
20-29	55	51.9
30-39	30	28.3
40+	11	10.4
Race/Ethnicity		
Black, NH	80	75.5
Hispanic/Latinx	2	1.9
White, NH	24	22.6
Total	106	100.0

<i>Cases with a Reported Risk*</i>	No.	%
FSF	1	1.0
HRH	16	15.8
Heterosexual contact	39	38.6
IDU	1	1.0
Illegal drug use (all types)	17	16.8
Incarceration	9	8.9
MSM	52	51.5
MSM/IDU	1	1.0
Transactional sex	4	4.0

No Reported Risk 5

Persons Diagnosed with Early non-P&S Syphilis January - December 2018

Between January 1 through December 31, 2018, **78** persons were newly diagnosed with Early non-P&S Syphilis in Metro Baton Rouge.

	No.	%
Gender		
Men	60	76.9
Women	15	19.2
Trans women	3	3.8
Age at Diagnosis		
13-19	2	2.6
20-29	36	46.2
30-39	23	29.5
40+	17	21.8
Race/Ethnicity		
American Indian	1	1.3
Black, NH	60	76.9
Hispanic/Latinx	2	2.6
White, NH	15	19.2
Total	78	100.0

<i>Cases with a Reported Risk*</i>	No.	%
FSF	2	2.7
HRH	8	10.7
Heterosexual contact	18	24.0
IDU	1	1.3
Illegal drug use (all types)	11	14.7
Incarceration	5	6.7
MSM	52	69.3
MSM/IDU	0	0.0
Transactional sex	3	4.0

No Reported Risk 3

* >1 reported risk per case possible. Cases with No Reported Risk excluded from denominator for risk percent calculations

People Living with HIV/AIDS by Region as of December 31, 2018

	<i>New HIV Diagnoses 2017 Calendar Year</i>	<i>New AIDS Diagnoses 2017 Calendar Year</i>	<i>Persons Living with HIV(nonAIDS) thru 12-31-2018</i>	<i>Persons Living with AIDS thru 12-31-2018</i>	<i>Persons Living with HIV or AIDS thru 12-31-2018</i>
Region 1	302	136	3,770	3,897	7,667
Region 2	214	119	2,541	2,647	5,188
Region 3	42	22	453	472	925
Region 4	110	46	899	870	1,769
Region 5	55	22	536	528	1,064
Region 6	45	31	522	466	988
Region 7	121	58	1,009	968	1,977
Region 8	59	37	580	581	1,161
Region 9	70	34	690	751	1,441
State Total	1,018	505	11,000	11,180	22,180



Region 1 (New Orleans): Jefferson, Orleans, Plaquemines, St. Bernard

Region 2 (Baton Rouge): Ascension, East Baton Rouge, East Feliciana, Iberville, Pointe Coupee, West Baton Rouge, West Feliciana

Region 3 (Houma): Assumption, Lafourche, St. Charles, St. James, St. John the Baptist, St. Mary, Terrebonne

Region 4 (Lafayette): Acadia, Evangeline, Iberia, Lafayette, St. Landry, St. Martin, Vermilion

Region 5 (Lake Charles): Allen, Beauregard, Calcasieu, Cameron, Jefferson Davis

Region 6 (Alexandria): Avoyelles, Catahoula, Concordia, Grant, LaSalle, Rapides, Vernon, Winn

Region 7 (Shreveport): Bienville, Bossier, Caddo, Claiborne, De Soto, Natchitoches, Red River, Sabine, Webster

Region 8 (Monroe): Caldwell, East Carroll, Franklin, Jackson, Lincoln, Madison, Morehouse, Ouachita, Richland, Tensas, Union, West Carroll

Region 9 (Hammond/Slidell): Livingston, St. Helena, St. Tammany, Tangipahoa, Washington

Persons Living with HIV Infection
Region 1: New Orleans Region
as of December 31, 2018
Jefferson, Orleans, Plaquemines & St. Bernard Parishes

	No.	%
Gender		
Men	5,609	73.2
Women	1,906	24.9
Trans women	151	2.0
Trans men	1	0.0
Current Age		
0-12	10	0.1
13-19	42	0.5
20-24	246	3.2
25-29	673	8.8
30-34	832	10.9
35-39	833	10.9
40-44	873	11.4
45-49	854	11.1
50-54	1,028	13.4
55-59	1,020	13.3
60+	1,256	16.4
Total	7,667	100.0

	Men		Women		Trans women		Trans men		Region 1 Totals	
	No.	%	No.	%	No.	%	No.	%	No.	%
Race/Ethnicity										
American Indian	5	0.1	1	0.1	-	-	-	-	6	0.1
Asian/PI	36	0.6	4	0.2	2	1.3	-	-	42	0.5
Black, NH	3,287	58.6	1,558	81.7	122	80.8	1	100.0	4,968	64.8
Hispanic/Latinx	414	7.4	117	6.1	14	9.3	-	-	545	7.1
Multi-race	35	0.6	12	0.6	1	0.7	-	-	48	0.6
White, NH	1,828	32.6	212	11.1	12	7.9	-	-	2,052	26.8
Unknown	4	0.1	2	0.1	-	-	-	-	6	0.1
Total	5,609	100.0	1,906	100.0	151	100.0	1	100.0	7,667	100.0

	Men		Women		Trans women		Region 1 Totals	
	No.	%	No.	%	No.	%	No.	%
Exposure Category								
MSM	3,450	69.6	-	-	-	-	3,450	49.9
Trans women - sex with men	-	-	-	-	135	89.4	135	2.0
MSM/IDU	290	5.9	-	-	-	-	290	4.2
Trans women - sex with men/IDU	-	-	-	-	15	9.9	15	0.2
IDU	316	6.4	195	10.8	-	-	511	7.4
HRH	862	17.4	1,359	75.5	1	0.7	2,222	32.2
FPHC	-	-	196	10.9	-	-	196	2.8
Transfusion/Hemophilia	14	0.3	14	0.8	-	-	28	0.4
Perinatal	25	0.5	35	1.9	-	-	60	0.9
Total	4,957	100.0	1,799	100.0	151	100.0	6,907	100.0

	Men	Women	Trans women	Trans men	Total
No Reported Risk	652	107	0	1	760

Persons Living with HIV Infection

Region 2: Baton Rouge Region

as of December 31, 2018

Ascension, East Baton Rouge, East Feliciana, Iberville, Pointe Coupee, West Baton Rouge, & West Feliciana Parishes

	No.	%
Gender		
Men	3,275	63.1
Women	1,843	35.5
Trans women	70	1.3
Current Age		
0-12	10	0.2
13-19	29	0.6
20-24	183	3.5
25-29	469	9.0
30-34	580	11.2
35-39	680	13.1
40-44	627	12.1
45-49	645	12.4
50-54	617	11.9
55-59	611	11.8
60+	737	14.2
Total	5,188	100.0

	Men		Women		Trans women		Region 2 Totals	
	No.	%	No.	%	No.	%	No.	%
Race/Ethnicity								
American Indian	5	0.2	-	-	-	-	5	0.1
Asian/PI	9	0.3	3	0.2	-	-	12	0.2
Black, NH	2,628	80.2	1,678	91.0	65	92.9	4,371	84.3
Hispanic/Latinx	72	2.2	20	1.1	2	2.9	94	1.8
Multi-race	18	0.5	10	0.5	-	-	28	0.5
White, NH	543	16.6	132	7.2	3	4.3	678	13.1
Total	3,275	100.0	1,843	100.0	70	100.0	5,188	100.0

	Men		Women		Trans women		Region 2 Totals	
	No.	%	No.	%	No.	%	No.	%
Exposure Category								
MSM	1,518	53.7	-	-	-	-	1,518	32.5
Trans women - sex with men	-	-	-	-	60	85.7	60	1.3
MSM/IDU	170	6.0	-	-	-	-	170	3.6
Trans women - sex with men/IDU	-	-	-	-	8	11.4	8	0.2
IDU	334	11.8	202	11.4	1	1.4	537	11.5
HRH	770	27.2	1,377	77.5	1	1.4	2,148	45.9
FPHC	-	-	165	9.3	-	-	165	3.5
Transfusion/Hemophilia	4	0.1	6	0.3	-	-	10	0.2
Perinatal	33	1.2	26	1.5	-	-	59	1.3
Total	2,829	100.0	1,776	100.0	70	100.0	4,675	100.0

	Men	Women	Trans women	Total
No Reported Risk	446	67	0	513

Persons Living with HIV Infection

Region 3: Houma Region

as of December 31, 2018

Assumption, Lafourche, St. Charles, St. James, St. John the Baptist, St. Mary, & Terrebonne Parishes

	No.	%
Gender		
Men	614	66.4
Women	302	32.6
Trans women	8	0.9
Trans men	1	0.1
Current Age		
0-12	2	0.2
13-19	10	1.1
20-24	43	4.6
25-29	86	9.3
30-34	109	11.8
35-39	120	13.0
40-44	96	10.4
45-49	106	11.5
50-54	119	12.9
55-59	110	11.9
60+	124	13.4
Total	925	100.0

	Men		Women		Trans women		Trans men		Region 3 Totals	
	No.	%	No.	%	No.	%	No.	%	No.	%
Race/Ethnicity										
American Indian	2	0.3	1	0.3	-	-	-	-	3	0.3
Asian/PI	2	0.3	1	0.3	-	-	-	-	3	0.3
Black, NH	336	54.7	219	72.5	5	62.5	1	100.0	561	60.6
Hispanic/Latinx	28	4.6	10	3.3	-	-	-	-	38	4.1
Multi-race	4	0.7	2	0.7	-	-	-	-	6	0.6
White, NH	242	39.4	68	22.5	3	37.5	-	-	313	33.8
Unknown	-	-	1	0.3	-	-	-	-	1	0.1
Total	614	100.0	302	100.0	8	100.0	1	100.0	925	100.0

	Men		Women		Trans women		Region 3 Totals	
	No.	%	No.	%	No.	%	No.	%
Exposure Category								
MSM	371	69.5	-	-	-	-	371	45.1
Trans women - sex with men	-	-	-	-	7	87.5	7	0.9
MSM/IDU	25	4.7	-	-	-	-	25	3.0
Trans women - sex with men/IDU	-	-	-	-	1	12.5	1	0.1
IDU	42	7.9	15	5.3	-	-	57	6.9
HRH	91	17.0	210	74.7	-	-	301	36.6
FPHC	-	-	47	16.7	-	-	47	5.7
Perinatal	5	0.9	9	3.2	-	-	14	1.7
Total	534	100.0	281	100.0	8	100.0	823	100.0

	Men	Women	Trans women	Trans men	Total
No Reported Risk	80	21	0	1	102

Persons Living with HIV Infection

Region 4: Lafayette Region

as of December 31, 2018

Acadia, Evangeline, Iberia, Lafayette, St. Landry, St. Martin, & Vermilion Parishes

	No.	%
Gender		
Men	1,325	74.9
Women	432	24.4
Trans women	12	0.7
Current Age		
0-12	4	0.2
13-19	14	0.8
20-24	87	4.9
25-29	172	9.7
30-34	209	11.8
35-39	184	10.4
40-44	153	8.6
45-49	211	11.9
50-54	252	14.2
55-59	232	13.1
60+	251	14.2
Total	1,769	100.0

	Men		Women		Trans women		Region 4 Totals	
	No.	%	No.	%	No.	%	No.	%
Race/Ethnicity								
American Indian	4	0.3	1	0.2	-	-	5	0.3
Asian/PI	5	0.4	3	0.7	-	-	8	0.5
Black, NH	676	51.0	306	70.8	10	83.3	992	56.1
Hispanic/Latinx	84	6.3	6	1.4	-	-	90	5.1
Multi-race	15	1.1	4	0.9	-	-	19	1.1
White, NH	541	40.8	110	25.5	2	16.7	653	36.9
Unknown	-	-	2	0.5	-	-	2	0.1
Total	1,325	100.0	432	100.0	12	100.0	1,769	100.0

	Men		Women		Trans women		Region 4 Totals	
	No.	%	No.	%	No.	%	No.	%
Exposure Category								
MSM	772	71.4	-	-	-	-	772	51.4
Trans women - sex with men	-	-	-	-	10	83.3	10	0.7
MSM/IDU	67	6.2	-	-	-	-	67	4.5
Trans women - sex with men/IDU	-	-	-	-	2	16.7	2	0.1
IDU	73	6.8	49	12.0	-	-	122	8.1
HRH	157	14.5	327	80.1	-	-	484	32.2
FPHC	-	-	27	6.6	-	-	27	1.8
Transfusion/Hemophilia	4	0.4	1	0.2	-	-	5	0.3
Perinatal	8	0.7	3	0.7	-	-	11	0.7
Confirmed Other	-	-	1	0.2	-	-	1	0.1
Total	1,081	100.0	408	100.0	12	100.0	1,501	100.0

	Men	Women	Trans women	Total
No Reported Risk	244	24	0	268

Persons Living with HIV Infection

Region 5: Lake Charles Region

as of December 31, 2018

Allen, Beauregard, Calcasieu, Cameron, & Jefferson Davis Parishes

	No.	%
Gender		
Men	801	75.3
Women	253	23.8
Trans women	10	0.9
Current Age		
0-12	2	0.2
13-19	6	0.6
20-24	28	2.6
25-29	93	8.7
30-34	87	8.2
35-39	114	10.7
40-44	137	12.9
45-49	127	11.9
50-54	164	15.4
55-59	154	14.5
60+	152	14.3
Total	1,064	100.0

	Men		Women		Trans women		Region 5 Totals	
	No.	%	No.	%	No.	%	No.	%
Race/Ethnicity								
American Indian	2	0.2	-	-	-	-	2	0.2
Asian/PI	5	0.6	-	-	-	-	5	0.5
Black, NH	412	51.4	167	66.0	9	90.0	588	55.3
Hispanic/Latinx	89	11.1	7	2.8	-	-	96	9.0
Multi-race	11	1.4	5	2.0	-	-	16	1.5
White, NH	282	35.2	74	29.2	1	10.0	357	33.6
Total	801	100.0	253	100.0	10	100.0	1,064	100.0

	Men		Women		Trans women		Region 5 Totals	
	No.	%	No.	%	No.	%	No.	%
Exposure Category								
MSM	385	59.3	-	-	-	-	385	42.8
Trans women - sex with men	-	-	-	-	9	100.0	9	1.0
MSM/IDU	55	8.5	-	-	-	-	55	6.1
IDU	83	12.8	35	14.5	-	-	118	13.1
HRH	118	18.2	177	73.1	-	-	295	32.8
FPHC	-	-	22	9.1	-	-	22	2.4
Transfusion/Hemophilia	3	0.5	-	-	-	-	3	0.3
Perinatal	5	0.8	8	3.3	-	-	13	1.4
Total	649	100.0	242	100.0	9	100.0	900	100.0

	Men	Women	Trans women	Total
No Reported Risk	152	11	1	164

Persons Living with HIV Infection

Region 6: Alexandria Region

as of December 31, 2018

Avoyelles, Catahoula, Concordia, Grant, La Salle, Rapides, Vernon, & Winn Parishes

	No.	%
Gender		
Men	695	70.3
Women	286	28.9
Trans women	7	0.7
Current Age		
0-12	2	0.2
13-19	7	0.7
20-24	28	2.8
25-29	77	7.8
30-34	105	10.6
35-39	116	11.7
40-44	138	14.0
45-49	126	12.8
50-54	132	13.4
55-59	108	10.9
60+	149	15.1
Total	988	100.0

	Men		Women		Trans women		Region 6 Totals	
	No.	%	No.	%	No.	%	No.	%
Race/Ethnicity								
American Indian	-	-	2	0.7	-	-	2	0.2
Asian/PI	3	0.4	-	-	-	-	3	0.3
Black, NH	403	58.0	223	78.0	3	42.9	629	63.7
Hispanic/Latinx	63	9.1	7	2.4	1	14.3	71	7.2
Multi-race	5	0.7	1	0.3	-	-	6	0.6
White, NH	220	31.7	53	18.5	3	42.9	276	27.9
Unknown	1	0.1	-	-	-	-	1	0.1
Total	695	100.0	286	100.0	7	100.0	988	100.0

	Men		Women		Trans women		Region 6 Totals	
	No.	%	No.	%	No.	%	No.	%
Exposure Category								
MSM	346	60.7	-	-	-	-	346	40.8
Trans women - sex with men	-	-	-	-	4	57.1	4	0.5
MSM/IDU	35	6.1	-	-	-	-	35	4.1
Trans women - sex with men/IDU	-	-	-	-	3	42.9	3	0.4
IDU	61	10.7	21	7.7	-	-	82	9.7
HRH	121	21.2	194	71.3	-	-	315	37.1
FPHC	-	-	52	19.1	-	-	52	6.1
Transfusion/Hemophilia	3	0.5	1	0.4	-	-	4	0.5
Perinatal	4	0.7	4	1.5	-	-	8	0.9
Total	570	100.0	272	100.0	7	100.0	849	100.0

	Men	Women	Trans women	Total
No Reported Risk	125	14	0	139

Persons Living with HIV Infection

Region 7: Shreveport Region

as of December 31, 2018

Bienville, Bossier, Caddo, Claiborne, DeSoto, Natchitoches, Red River, Sabine, & Webster Parishes

	No.	%
Gender		
Men	1,387	70.2
Women	577	29.2
Trans women	13	0.7
Current Age		
0-12	1	0.1
13-19	12	0.6
20-24	114	5.8
25-29	252	12.7
30-34	259	13.1
35-39	240	12.1
40-44	236	11.9
45-49	218	11.0
50-54	215	10.9
55-59	191	9.7
60+	239	12.1
Total	1,977	100.0

	Men		Women		Trans women		Region 7 Totals	
	No.	%	No.	%	No.	%	No.	%
Race/Ethnicity								
American Indian	10	0.7	2	0.3	-	-	12	0.6
Asian/PI	5	0.4	1	0.2	-	-	6	0.3
Black, NH	1,002	72.2	468	81.1	12	92.3	1,482	75.0
Hispanic/Latinx	27	1.9	7	1.2	1	7.7	35	1.8
Multi-race	13	0.9	3	0.5	-	-	16	0.8
White, NH	330	23.8	96	16.6	-	-	426	21.5
Total	1,387	100.0	577	100.0	13	100.0	1,977	100.0

	Men		Women		Trans women		Region 7 Totals	
	No.	%	No.	%	No.	%	No.	%
Exposure Category								
MSM	859	73.1	-	-	-	-	859	49.5
Trans women - sex with men	-	-	-	-	12	92.3	12	0.7
MSM/IDU	84	7.1	-	-	-	-	84	4.8
Trans women - sex with men/IDU	-	-	-	-	1	7.7	1	0.1
IDU	50	4.3	63	11.5	-	-	113	6.5
HRH	174	14.8	363	66.4	-	-	537	31.0
FPHC	-	-	111	20.3	-	-	111	6.4
Transfusion/Hemophilia	2	0.2	3	0.5	-	-	5	0.3
Perinatal	6	0.5	7	1.3	-	-	13	0.7
Total	1,175	100.0	547	100.0	13	100.0	1,735	100.0

	Men	Women	Trans women	Total
No Reported Risk	212	30	0	242

Persons Living with HIV Infection

Region 8: Monroe Region

as of December 31, 2018

Caldwell, East Carroll, Franklin, Jackson, Lincoln, Madison, Morehouse, Ouachita, Richland, Tensas,
Union, & West Carroll Parishes

	No.	%
Gender		
Men	776	66.8
Women	374	32.2
Trans women	11	0.9
Current Age		
0-12	1	0.1
13-19	11	0.9
20-24	67	5.8
25-29	97	8.4
30-34	108	9.3
35-39	130	11.2
40-44	156	13.4
45-49	140	12.1
50-54	139	12.0
55-59	139	12.0
60+	173	14.9
Total	1,161	100.0

	Men		Women		Trans women		Region 8 Totals	
	No.	%	No.	%	No.	%	No.	%
Race/Ethnicity								
American Indian	2	0.3	2	0.5	-	-	4	0.3
Asian/PI	3	0.4	1	0.3	-	-	4	0.3
Black, NH	557	71.8	318	85.0	10	90.9	885	76.2
Hispanic/Latinx	20	2.6	6	1.6	1	9.1	27	2.3
Multi-race	9	1.2	1	0.3	-	-	10	0.9
White, NH	184	23.7	46	12.3	-	-	230	19.8
Unknown	1	0.1	-	-	-	-	1	0.1
Total	776	100.0	374	100.0	11	100.0	1,161	100.0

	Men		Women		Trans women		Region 8 Totals	
	No.	%	No.	%	No.	%	No.	%
Exposure Category								
MSM	452	65.7	-	-	-	-	452	43.0
Trans women - sex with men	-	-	-	-	11	100.0	11	1.0
MSM/IDU	43	6.3	-	-	-	-	43	4.1
IDU	44	6.4	31	8.8	-	-	75	7.1
HRH	146	21.2	281	80.1	-	-	427	40.7
FPHC	-	-	26	7.4	-	-	26	2.5
Transfusion/Hemophilia	1	0.1	3	0.9	-	-	4	0.4
Perinatal	2	0.3	10	2.8	-	-	12	1.1
Total	688	100.0	351	100.0	11	100.0	1,050	100.0

	Men	Women	Trans women	Total
No Reported Risk	88	23	0	111

Persons Living with HIV Infection

Region 9: Hammond/Slidell Region

as of December 31, 2018

Livingston, St. Helena, St. Tammany, Tangipahoa, & Washington Parishes

	No.	%
Gender		
Men	1,051	72.9
Women	374	26.0
Trans women	16	1.1
Current Age		
0-12	3	0.2
13-19	7	0.5
20-24	47	3.3
25-29	102	7.1
30-34	139	9.6
35-39	155	10.8
40-44	169	11.7
45-49	169	11.7
50-54	229	15.9
55-59	195	13.5
60+	226	15.7
Total	1,441	100.0

	Men		Women		Trans women		Region 9 Totals	
	No.	%	No.	%	No.	%	No.	%
Race/Ethnicity								
American Indian	2	0.2	-	-	-	-	2	0.1
Asian/PI	3	0.3	3	0.8	-	-	6	0.4
Black, NH	496	47.2	238	63.6	11	68.8	745	51.7
Hispanic/Latinx	42	4.0	13	3.5	-	-	55	3.8
Multi-race	3	0.3	1	0.3	1	6.3	5	0.3
White, NH	505	48.0	119	31.8	4	25.0	628	43.6
Total	1,051	100.0	374	100.0	16	100.0	1,441	100.0

	Men		Women		Trans women		Region 9 Totals	
	No.	%	No.	%	No.	%	No.	%
Exposure Category								
MSM	609	69.5	-	-	-	-	609	49.0
Trans women - sex with men	-	-	-	-	15	93.8	15	1.2
MSM/IDU	58	6.6	-	-	-	-	58	4.7
IDU	61	7.0	55	15.7	1	6.3	117	9.4
HRH	139	15.9	230	65.7	-	-	369	29.7
FPHC	-	-	58	16.6	-	-	58	4.7
Transfusion/Hemophilia	3	0.3	-	-	-	-	3	0.2
Perinatal	6	0.7	7	2.0	-	-	13	1.0
Total	876	100.0	350	100.0	16	100.0	1,242	100.0

	Men	Women	Trans women	Total
No Reported Risk	175	24	0	199

Persons Newly Diagnosed with HIV
Regions 1 - 5
January - December 2017

	Region 1		Region 2		Region 3		Region 4		Region 5	
	No.	%	No.	%	No.	%	No.	%	No.	%
Gender										
Men	217	71.9	151	70.6	32	76.2	89	80.9	43	78.2
Women	77	25.5	56	26.2	8	19.0	20	18.2	12	21.8
Trans women	8	2.6	7	3.3	2	4.8	1	0.9	-	-
Age at Diagnosis										
13-24	68	22.5	47	22.0	14	33.3	30	27.3	16	29.1
25-34	116	38.4	82	38.3	13	31.0	48	43.6	19	34.5
35-44	59	19.5	33	15.4	6	14.3	13	11.8	8	14.5
45+	59	19.5	52	24.3	9	21.4	19	17.3	12	21.8
Race/Ethnicity										
American Indian	1	0.3	1	0.5	-	-	-	-	1	1.8
Asian/PI	-	-	-	-	-	-	1	0.9	-	-
Black, NH	210	69.5	182	85.0	27	64.3	55	50.0	28	50.9
Hispanic/Latinx	37	12.3	6	2.8	4	9.5	4	3.6	3	5.5
Multi-race	2	0.7	1	0.5	-	-	-	-	2	3.6
White, NH	52	17.2	24	11.2	11	26.2	50	45.5	21	38.2
Regional Totals	302	100.0	214	100.0	42	100.0	110	100.0	55	100.0

	Region 1		Region 2		Region 3		Region 4		Region 5	
	No.	%	No.	%	No.	%	No.	%	No.	%
Exposure Category										
MSM	152	55.3	96	53.6	17	53.1	60	68.2	26	57.8
Trans women - sex with men	6	2.2	7	3.9	2	6.3	1	1.1	-	-
MSM/IDU	4	1.5	2	1.1	-	-	1	1.1	3	6.7
Trans women - sex with men/IDU	2	0.7	-	-	-	-	-	-	-	-
IDU	14	5.1	3	1.7	-	-	5	5.7	3	6.7
HRH	84	30.5	57	31.8	10	31.3	19	21.6	13	28.9
FPHC	13	4.7	14	7.8	3	9.4	2	2.3	-	-
Regional Totals	275	100.0	179	100.0	32	100.0	88	100.0	45	100.0

	Region 1	Region 2	Region 3	Region 4	Region 5
No Reported Risk	27	35	10	22	10

Persons Newly Diagnosed with HIV
Regions 6 - 9
January - December 2017

	Region 6		Region 7		Region 8		Region 9	
	No.	%	No.	%	No.	%	No.	%
Gender								
Men	31	68.9	95	78.5	45	76.3	50	71.4
Women	13	28.9	25	20.7	13	22.0	17	24.3
Trans women	1	2.2	1	0.8	1	1.7	3	4.3
Age at Diagnosis								
13-24	6	13.3	35	28.9	16	27.1	19	27.1
25-34	10	22.2	49	40.5	15	25.4	20	28.6
35-44	14	31.1	19	15.7	9	15.3	10	14.3
45+	15	33.3	18	14.9	19	32.2	21	30.0
Race/Ethnicity								
Asian/PI	-	-	1	0.8	1	1.7	-	-
Black, NH	21	46.7	95	78.5	40	67.8	42	60.0
Hispanic/Latinx	6	13.3	3	2.5	5	8.5	4	5.7
White, NH	18	40.0	22	18.2	13	22.0	24	34.3
Regional Totals	45	100.0	121	100.0	59	100.0	70	100.0

	Region 6		Region 7		Region 8		Region 9	
	No.	%	No.	%	No.	%	No.	%
Exposure Category								
MSM	14	38.9	62	65.3	32	61.5	28	52.8
Trans women - sex with men	1	2.8	1	1.1	1	1.9	3	5.7
MSM/IDU	4	11.1	2	2.1	-	-	-	-
IDU	3	8.3	6	6.3	2	3.8	5	9.4
HRH	13	36.1	18	18.9	13	25.0	10	18.9
FPHC	1	2.8	6	6.3	4	7.7	7	13.2
Regional Totals	36	100.0	95	100.0	52	100.0	53	100.0

	Region 6	Region 7	Region 8	Region 9
No Reported Risk	9	26	7	17

Persons Newly Diagnosed with AIDS
Regions 1 - 5
January - December 2017

	Region 1		Region 2		Region 3		Region 4		Region 5	
	No.	%	No.	%	No.	%	No.	%	No.	%
Gender										
Men	94	69.1	73	61.3	15	68.2	37	80.4	18	81.8
Women	39	28.7	44	37.0	6	27.3	9	19.6	4	18.2
Trans women	3	2.2	2	1.7	1	4.5	-	-	-	-
Age at Diagnosis										
0-12	-	-	2	1.7	1	4.5	-	-	-	-
13-24	18	13.2	10	8.4	2	9.1	7	15.2	1	4.5
25-34	36	26.5	49	41.2	7	31.8	12	26.1	8	36.4
35-44	33	24.3	23	19.3	6	27.3	10	21.7	4	18.2
45+	49	36.0	35	29.4	6	27.3	17	37.0	9	40.9
Race/Ethnicity										
Asian/PI	-	-	-	-	-	-	1	2.2	-	-
Black, NH	91	66.9	101	84.9	13	59.1	31	67.4	13	59.1
Hispanic/Latinx	14	10.3	1	0.8	4	18.2	1	2.2	-	-
Multi-race	2	1.5	-	-	-	-	-	-	-	-
White, NH	29	21.3	17	14.3	5	22.7	13	28.3	9	40.9
Regional Totals	136	100.0	119	100.0	22	100.0	46	100.0	22	100.0

	Region 1		Region 2		Region 3		Region 4		Region 5	
	No.	%	No.	%	No.	%	No.	%	No.	%
Exposure Category										
MSM	58	45.7	36	35.3	6	33.3	19	55.9	7	38.9
Trans women - sex with men	2	1.6	2	2.0	1	5.6	-	-	-	-
MSM/IDU	4	3.1	1	1.0	-	-	-	-	1	5.6
Trans women - sex with men/IDU	1	0.8	-	-	-	-	-	-	-	-
IDU	9	7.1	6	5.9	1	5.6	2	5.9	4	22.2
HRH	47	37.0	49	48.0	7	38.9	12	35.3	6	33.3
FPHC	6	4.7	5	4.9	2	11.1	-	-	-	-
Perinatal	-	-	3	2.9	1	5.6	1	2.9	-	-
Regional Totals	127	100.0	102	100.0	18	100.0	34	100.0	18	100.0

	Region 1	Region 2	Region 3	Region 4	Region 5
No Reported Risk	9	17	4	12	4

Persons Newly Diagnosed with AIDS
Regions 6 - 9
January - December 2017

	Region 6		Region 7		Region 8		Region 9	
	No.	%	No.	%	No.	%	No.	%
Gender								
Men	23	74.2	45	77.6	27	73.0	29	85.3
Women	7	22.6	12	20.7	9	24.3	5	14.7
Trans women	1	3.2	1	1.7	1	2.7	-	-
Age at Diagnosis								
13-24	-	-	9	15.5	2	5.4	3	8.8
25-34	10	32.3	25	43.1	7	18.9	9	26.5
35-44	9	29.0	7	12.1	10	27.0	9	26.5
45+	12	38.7	17	29.3	18	48.6	13	38.2
Race/Ethnicity								
Asian/PI	-	-	-	-	1	2.7	-	-
Black, NH	20	64.5	45	77.6	27	73.0	19	55.9
Hispanic/Latinx	3	9.7	1	1.7	2	5.4	3	8.8
Multi-race	-	-	-	-	1	2.7	-	-
White, NH	8	25.8	12	20.7	6	16.2	12	35.3
Regional Totals	31	100.0	58	100.0	37	100.0	34	100.0

	Region 6		Region 7		Region 8		Region 9	
	No.	%	No.	%	No.	%	No.	%
Exposure Category								
MSM	14	58.3	32	66.7	12	37.5	18	69.2
Trans women - sex with men	1	4.2	1	2.1	1	3.1	-	-
MSM/IDU	-	-	-	-	1	3.1	-	-
IDU	1	4.2	2	4.2	2	6.3	1	3.8
HRH	6	25.0	11	22.9	15	46.9	5	19.2
FPHC	1	4.2	2	4.2	1	3.1	2	7.7
Transfusion/Hemophilia	1	4.2	-	-	-	-	-	-
Regional Totals	24	100.0	48	100.0	32	100.0	26	100.0

	Region 6	Region 7	Region 8	Region 9
No Reported Risk	7	10	5	8

Persons Diagnosed with P&S Syphilis
Regions 1-5
January - December 2018

	Region 1		Region 2		Region 3		Region 4		Region 5	
	No.	%	No.	%	No.	%	No.	%	No.	%
Gender										
Men	165	88.2	76	73.1	10	76.9	25	73.5	4	50.0
Women	16	8.6	25	24.0	3	23.1	9	26.5	4	50.0
Trans women	6	3.2	3	2.9	-	-	-	-	-	-
Age at Diagnosis										
13-19	10	5.3	10	9.6	-	-	2	5.9	-	-
20-29	81	43.3	54	51.9	7	53.8	22	64.7	2	25.0
30-39	54	28.9	29	27.9	3	23.1	5	14.7	3	37.5
40+	42	22.5	11	10.6	3	23.1	5	14.7	3	37.5
Race/Ethnicity										
American Indian	2	1.1	-	-	-	-	-	-	-	-
Asian/PI	3	1.6	-	-	-	-	1	2.9	-	-
Black, NH	104	55.6	78	75.0	6	46.2	20	58.8	6	75.0
Hispanic/Latinx	9	4.8	2	1.9	-	-	-	-	-	-
White, NH	69	36.9	24	23.1	7	53.8	13	38.2	2	25.0
Regional Totals	187	100.0	104	100.0	13	100.0	34	100.0	8	100.0

	Region 1		Region 2		Region 3		Region 4		Region 5	
<i>Cases with a Reported Risk*</i>	No.	%	No.	%	No.	%	No.	%	No.	%
FSF	0	0.0	1	1.0	0	0.0	0	0.0	1	12.5
HRH	19	10.7	16	16.0	0	0.0	5	14.7	1	12.5
Heterosexual contact	30	16.9	38	38.0	5	41.7	19	55.9	4	50.0
IDU	1	0.6	1	1.0	0	0.0	1	2.9	0	0.0
Illegal drug use (all types)	71	40.1	17	17.0	5	41.7	9	26.5	3	37.5
Incarceration	9	5.1	8	8.0	1	8.3	2	5.9	0	0.0
MSM	136	76.8	52	52.0	7	58.3	13	38.2	3	37.5
MSM/IDU	1	0.6	1	1.0	0	0.0	0	0.0	0	0.0
Transactional sex	5	2.8	4	4.0	0	0.0	1	2.9	0	0.0
	Region 1		Region 2		Region 3		Region 4		Region 5	
No Reported Risk	10		4		1		0		0	

* >1 reported risk per case possible. Cases with No Reported Risk excluded from denominator for risk percent calculations

Persons Diagnosed with P&S Syphilis
Regions 6-9
January - December 2018

	Region 6		Region 7		Region 8		Region 9	
	No.	%	No.	%	No.	%	No.	%
Gender								
Men	59	65.6	56	64.4	43	59.7	21	80.8
Women	30	33.3	30	34.5	29	40.3	5	19.2
Trans women	1	1.1	1	1.1	-	-	-	-
Age at Diagnosis								
0-12	-	-	1	1.1	-	-	-	-
13-19	4	4.4	9	10.3	13	18.1	1	3.8
20-29	42	46.7	42	48.3	36	50.0	14	53.8
30-39	33	36.7	21	24.1	14	19.4	2	7.7
40+	11	12.2	14	16.1	9	12.5	9	34.6
Race/Ethnicity								
American Indian	-	-	-	-	-	-	1	3.8
Black, NH	50	55.6	63	72.4	67	93.1	11	42.3
Hispanic/Latinx	-	-	1	1.1	-	-	-	-
White, NH	40	44.4	23	26.4	5	6.9	14	53.8
Regional Totals	90	100.0	87	100.0	72	100.0	26	100.0

	<i>Region 6</i>		<i>Region 7</i>		<i>Region 8</i>		<i>Region 9</i>	
<i>Cases with a Reported Risk*</i>	No.	%	No.	%	No.	%	No.	%
FSF	16	19.0	2	2.4	1	1.4	1	4.2
HRH	36	42.9	22	25.9	19	26.4	3	12.5
Heterosexual contact	31	36.9	34	40.0	34	47.2	11	45.8
IDU	9	10.7	3	3.5	0	0.0	0	0.0
Illegal drug use (all types)	54	64.3	35	41.2	14	19.4	4	16.7
Incarceration	24	28.6	5	5.9	7	9.7	2	8.3
MSM	22	26.2	30	35.3	23	31.9	13	54.2
MSM/IDU	2	2.4	1	1.2	0	0.0	0	0.0
Transactional sex	19	22.6	7	8.2	1	1.4	2	8.3
	<i>Region 6</i>		<i>Region 7</i>		<i>Region 8</i>		<i>Region 9</i>	
No Reported Risk	6		2		0		2	

* >1 reported risk per case possible. Cases with No Reported Risk excluded from denominator for risk percent calculations

Persons Diagnosed with Early non-P&S Syphilis
Regions 1-5
January - December 2018

	Region 1		Region 2		Region 3		Region 4		Region 5	
	No.	%	No.	%	No.	%	No.	%	No.	%
Gender										
Men	190	84.8	55	75.3	12	80.0	23	67.6	4	50.0
Women	27	12.1	15	20.5	3	20.0	10	29.4	4	50.0
Trans women	7	3.1	3	4.1	-	-	1	2.9	-	-
Age at Diagnosis										
13-19	5	2.2	1	1.4	1	6.7	3	8.8	1	12.5
20-29	93	41.5	35	47.9	9	60.0	16	47.1	3	37.5
30-39	77	34.4	21	28.8	3	20.0	9	26.5	1	12.5
40+	49	21.9	16	21.9	2	13.3	6	17.6	3	37.5
Race/Ethnicity										
American Indian	1	0.4	1	1.4	-	-	-	-	-	-
Asian/PI	3	1.3	-	-	-	-	-	-	-	-
Black, NH	146	65.2	58	79.5	6	40.0	20	58.8	4	50.0
Hispanic/Latinx	17	7.6	2	2.7	-	-	1	2.9	1	12.5
White, NH	57	25.4	12	16.4	9	60.0	13	38.2	3	37.5
Regional Totals	224	100.0	73	100.0	15	100.0	34	100.0	8	100.0

	Region 1		Region 2		Region 3		Region 4		Region 5	
<i>Cases with a Reported Risk*</i>	No.	%	No.	%	No.	%	No.	%	No.	%
FSF	2	0.9	2	2.8	0	0.0	0	0.0	0	0.0
HRH	21	9.5	8	11.3	4	28.6	5	14.7	1	12.5
Heterosexual contact	39	17.6	17	23.9	5	35.7	17	50.0	6	75.0
IDU	1	0.5	1	1.4	0	0.0	0	0.0	0	0.0
Illegal drug use (all types)	80	36.0	10	14.1	6	42.9	9	26.5	0	0.0
Incarceration	11	5.0	4	5.6	1	7.1	4	11.8	0	0.0
MSM	174	78.4	49	69.0	6	42.9	14	41.2	2	25.0
MSM/IDU	4	1.8	0	0.0	0	0.0	0	0.0	0	0.0
Transactional sex	9	4.1	3	4.2	2	14.3	2	5.9	1	12.5
	Region 1		Region 2		Region 3		Region 4		Region 5	
No Reported Risk	2		2		1		0		0	

* >1 reported risk per case possible. Cases with No Reported Risk excluded from denominator for risk percent calculations

Persons Diagnosed with Early non-P&S Syphilis
Regions 6-9
January - December 2018

	Region 6		Region 7		Region 8		Region 9	
	No.	%	No.	%	No.	%	No.	%
Gender								
Men	17	58.6	36	48.6	15	40.5	16	72.7
Women	11	37.9	38	51.4	22	59.5	6	27.3
Trans women	1	3.4	-	-	-	-	-	-
Age at Diagnosis								
13-19	1	3.4	15	20.3	7	18.9	4	18.2
20-29	17	58.6	31	41.9	19	51.4	5	22.7
30-39	8	27.6	12	16.2	5	13.5	9	40.9
40+	3	10.3	16	21.6	6	16.2	4	18.2
Race/Ethnicity								
Black, NH	20	69.0	54	73.0	30	81.1	14	63.6
Hispanic/Latinx	-	-	3	4.1	1	2.7	-	-
White, NH	9	31.0	17	23.0	6	16.2	8	36.4
Regional Totals	29	100.0	74	100.0	37	100.0	22	100.0

	Region 6		Region 7		Region 8		Region 9	
<i>Cases with a Reported Risk*</i>	No.	%	No.	%	No.	%	No.	%
FSF	2	7.1	0	0.0	2	5.6	0	0.0
HRH	17	60.7	9	12.3	8	22.2	1	4.8
Heterosexual contact	7	25.0	44	60.3	20	55.6	11	52.4
IDU	3	10.7	2	2.7	0	0.0	0	0.0
Illegal drug use (all types)	18	64.3	14	19.2	10	27.8	3	14.3
Incarceration	9	32.1	7	9.6	3	8.3	3	14.3
MSM	5	17.9	21	28.8	8	22.2	10	47.6
MSM/IDU	1	3.6	0	0.0	0	0.0	0	0.0
Transactional sex	12	42.9	2	2.7	0	0.0	0	0.0
	Region 6		Region 7		Region 8		Region 9	
No Reported Risk	1		1		1		1	

* >1 reported risk per case possible. Cases with No Reported Risk excluded from denominator for risk percent calculations

WOMEN & GIRLS HIV/AIDS



awareness day

MARCH 10



This year marks the 14th observance of National Women and Girls HIV/AIDS Awareness Day (NWGHAAD). The nationwide observance sheds light on the impact of HIV/AIDS on women and girls. This year's theme is: *HIV Prevention Starts with ME*

In 2015, there were
an estimated

**256,500
Women**

living with HIV in
the United States

The majority of women acquire HIV through:



Heterosexual Sex

Or

Injection Drug Use



Nationally, **1 in 9**
women living
with HIV **do not**
know they
have it.



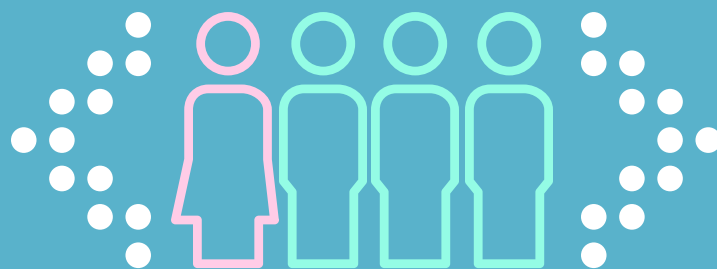
Black
women
and **other**
women of color
are more affected
by the HIV
epidemic than
White women.

It is especially important
for **women of child-bearing**
age and **pregnant women**
receive HIV testing

If an HIV positive mother receives
appropriate antiretroviral
treatment during pregnancy, labor,
& delivery, does not breastfeed, and
completes a treatment course for
the newborn, there is **a less than**
1% chance the mother will
transmit HIV to her child.

Between
2012-2017,
the annual
number of
new HIV
diagnoses
among
women
declined
by 11%

HIV/AIDS Among Women and Girls in Louisiana



1 in 4 new HIV diagnoses in Louisiana are **women**.

Over Half
of **women** newly diagnosed with HIV in Louisiana are *under age 35*.

2 in 3 women living with HIV in Louisiana are **virally suppressed**.

Viral suppression is when a person has very low levels of HIV in their blood. People who are virally suppressed cannot pass HIV on to sex partners.

Black women are affected by HIV more than other women in Louisiana.

33% of Louisiana's female population are Black women...



...78% of new female HIV diagnoses are Black women



Approximately 150-160 HIV positive women give birth in Louisiana each year. Many of these women have no prenatal care.

It is Louisiana Law that all pregnant women be tested for HIV at their first prenatal care visit and again in the third trimester.

What YOU can do to Prevent the Spread of HIV:



If you are living with HIV, take your medications as prescribed to stay healthy and greatly reduce the risk of passing HIV to a partner.



If you are HIV-negative, ask your doctor about pre-exposure prophylaxis (PrEP), a daily pill to prevent HIV.



Regardless of your status, use a condom every time you have sex. Condoms reduce the risk of getting HIV and other sexually transmitted infections.



Know your status. Get tested for HIV. To find a testing location near you and information on HIV & other sexually transmitted infections visit:



www.lahhub.org



@lahealthhub