

# Incident Command Structure Just-in-Time Training

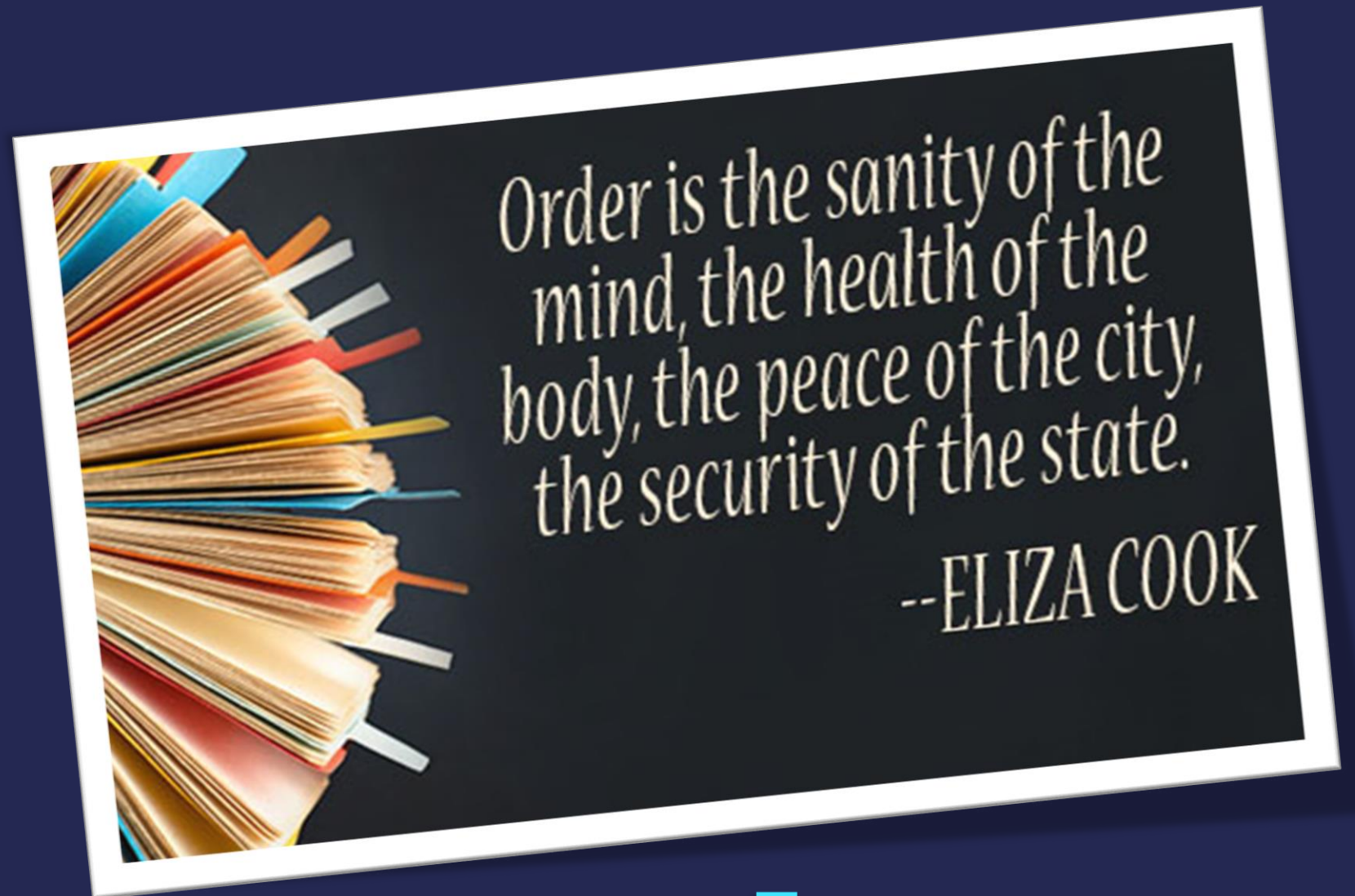
Volunteer Management Program – Louisiana Volunteers in Action



# DISCLOSURE

The Louisiana Department of Health Office of Public Health Bureau of Community Preparedness employees, contractors, affiliates, etc. have no actual or potential conflict of interest nor any financial gain in relation to this program presentation.

# QUOTATION



# VOLUNTEERS

Volunteers are an integral part of public health and emergency management!





# VOLUNTEERS

They offer a wealth of skills and resources that can be used before, during, and after an emergency.



# VOLUNTEERS AND ICS

It is important that volunteers and all emergency management personnel operate within the incident management systems for seamless and effective coordination.

ICS

# INCIDENT COMMAND STRUCTURE (ICS)

- Volunteer Management Program
- Louisiana Volunteers in Action

# ICS HISTORY

# 1973

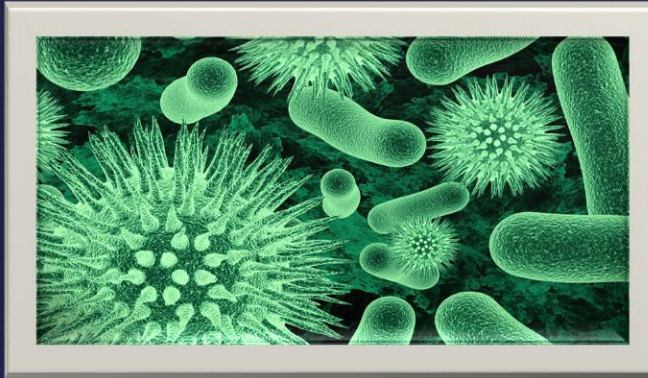
- ICS concept was developed after a devastating California wildfire.

- The Congress mandated that the U.S. Forest Service design a system for effective interagency action and resource allocation for multi-fire situations in Southern California.
  - Was first called FIRESCOPE (Firefighting RESources of California Organized for Potential Emergencies).





# ICS HISTORY



- The system was quickly recognized by emergency responders for its adaptability in effectively managing incidents for a wide range of situations—
- **ALL-HAZARDS.**

# ICS FEATURES

## ICS must be:

- Interdisciplinary
- Organizationally flexible to meet the following challenges:
  - Meet the needs of incidents of any kind or size.
  - Be usable for routine or planned events (e.g., conferences, emergencies, disasters).
  - Allow personnel from a variety of agencies to meld rapidly into a common management structure.
  - Provide logistical and administrative support to ensure that operational staff can meet tactical objectives.
  - Be cost effective by avoiding duplication of efforts.

# DISASTER DEMANDS

- Warning
- Pre-impact preparations
- Search and rescue
- Care of injured and dead
- Welfare needs
- Restoration of essential services
- Protection against continuing threat
- Community order

## “Response-Generated Demands”

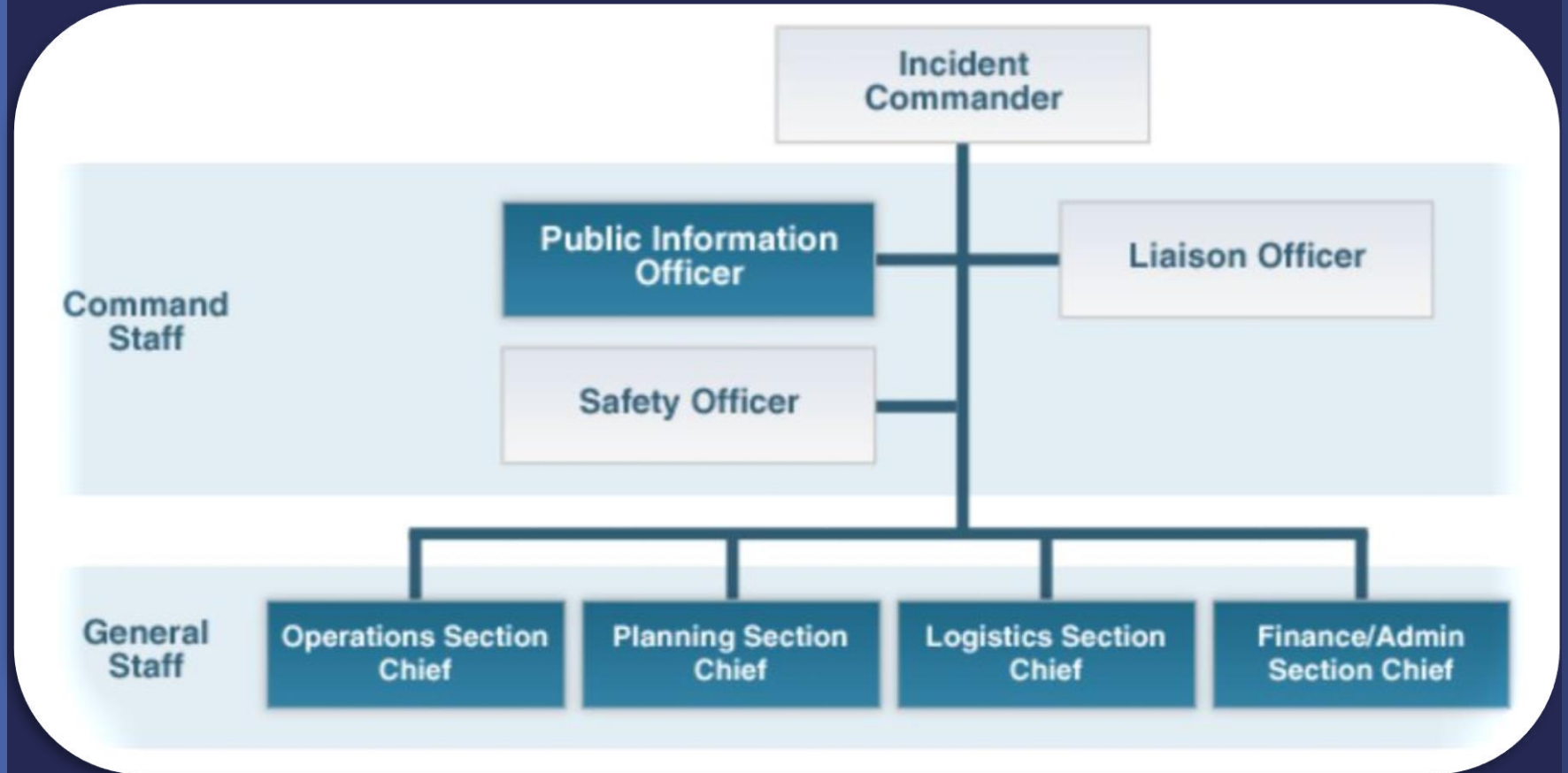
## “Hazard-Generated Demands”

*Two sets of demands occur simultaneously!*

- Communications
- Continuing assessment of situation
- Mobilization and utilization of resources
- Coordination
- Exercise of authority

Figure courtesy of Mr. Peter Brewster; adapted from E.L. Quarantelli, *Major Criteria for Judging Disaster Planning and Managing and Their Applicability in Developing Societies* (1998). Disaster Research Center, University of Delaware; Newark, DE. Available at: <http://www.udel.edu/DRC/preliminary/268.pdf>.

# ICS DIAGRAM



# C-FLOP

Functional areas are called “C-FLOP”:

- **C**OMMAND
- **F**INANCE/ADMINISTRATION
- **L**OGISTICS
- **O**PERATIONS
- **P**LANNING

# COMMAND

This ICS Area **develops, directs, and maintains** communication and collaboration with multiple onsite agencies, and **works** with the local officials, the public, and the media to provide up-to-date disaster information.





# FINANCE & ADMINISTRATION

The ICS Section responsible for an incident's **administrative and financial considerations.**



# LOGISTICS

The Logistics Section is responsible for providing **facilities, services, and material support** for the incident.



# OPERATIONS

The Operations Section is responsible for managing operations directed toward reducing the immediate hazard at the incident site, saving lives and property, establishing situation control, and restoring normal conditions.



# PLANNING

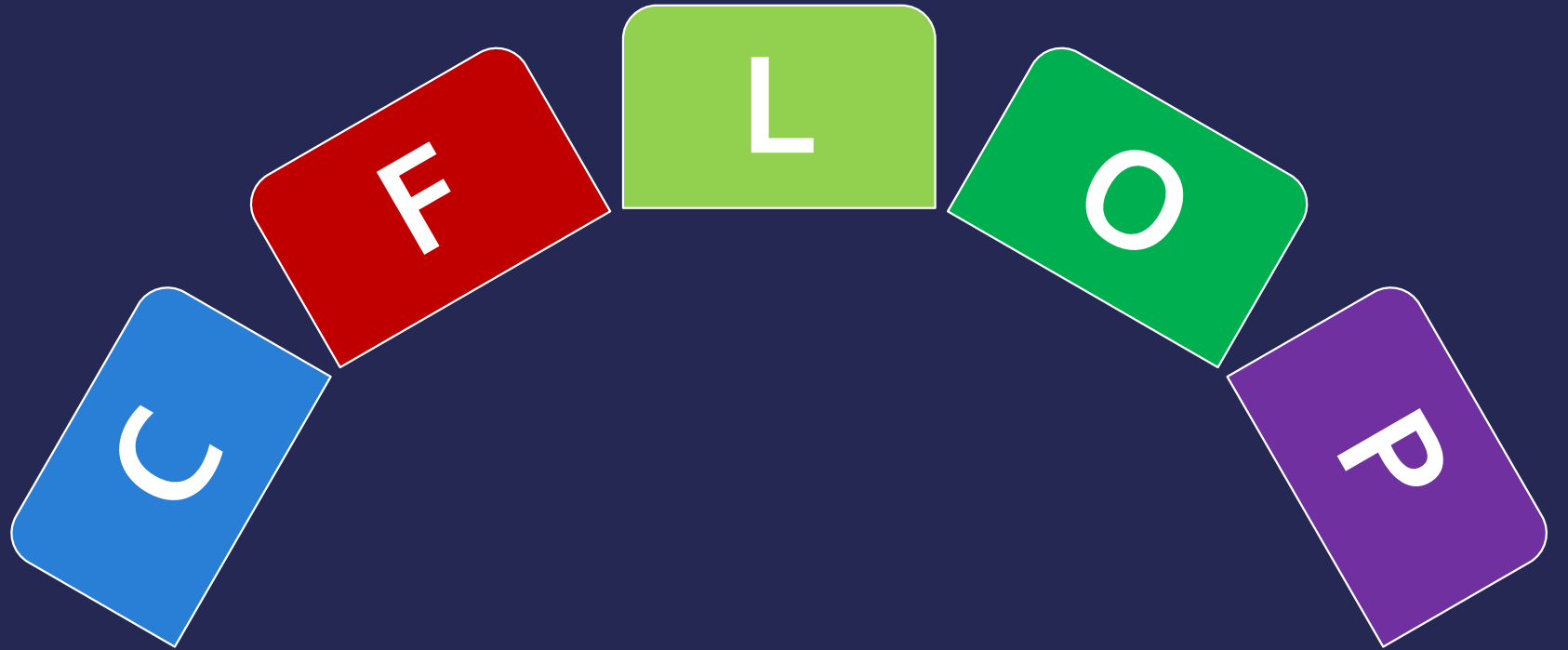
- The Planning Section **collects, evaluates, and disseminates** operational information related to the incident and for the preparation and documentation of the Incident Action Plan.
- The Section also maintains information on the current and forecasted situation and on the resource status assigned to the incident.



# ICS FLASH QUIZ

- Volunteer Management Program
- Louisiana Volunteers in Action

# FLASH QUESTION #1





# FLASH QUESTION #2



- Which functional area manages budgets, procurement, and human resources and compensation?

# FLASH QUESTION #3

Command sets priorities, and determines incident objectives and strategies to be followed.

TRUE OR FALSE

# FLASH QUESTION #4

Which functional area manages and assures safety of tactical operations?



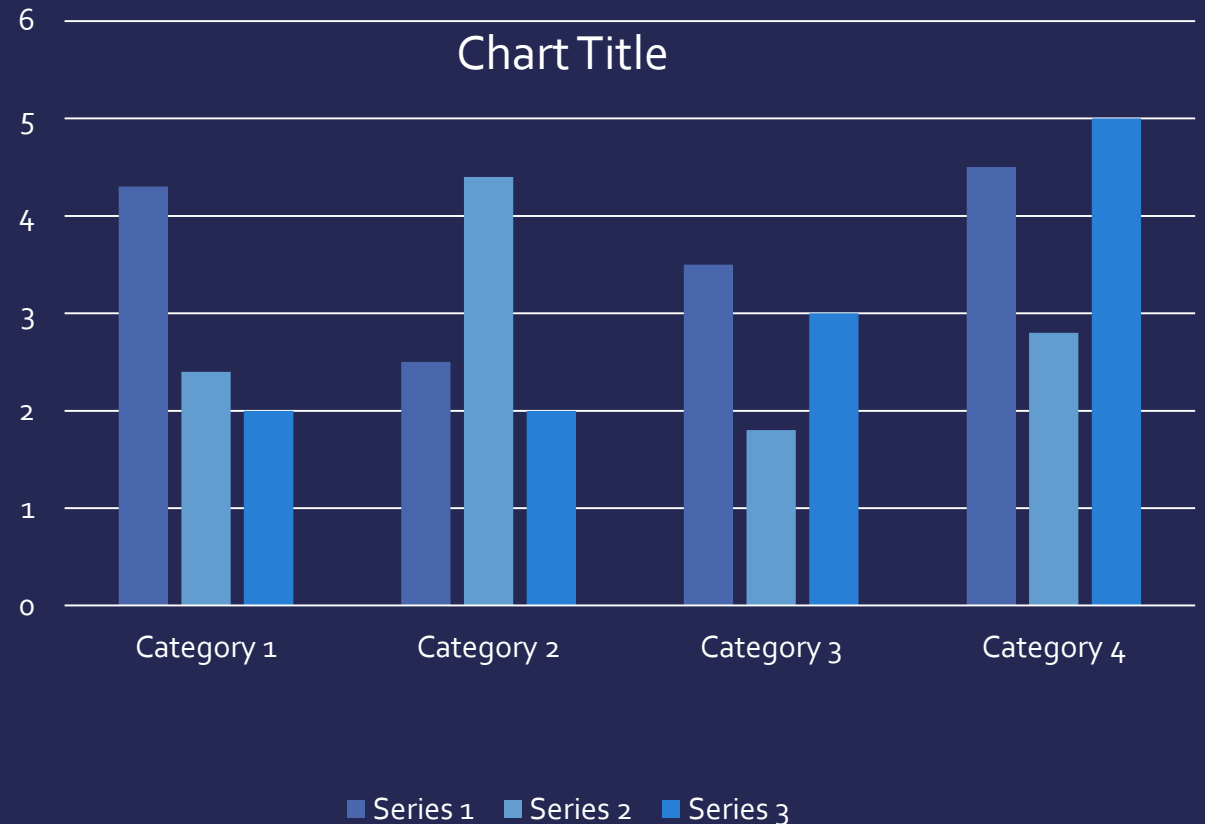
# FLASH QUESTION #5

Which functional area provides resources for incident personnel as illustrated by pictured items?



# FLASH QUESTION #6

- Which functional area collects and manages all incident-relevant operational data?



# FLASH QUESTION #7

The Incident Command Structure was developed in California after which kind of emergency?

- a. Earthquake
- b. Flood
- c. Hurricane
- d. Fire



# CONTACTS AND QUESTIONS

- **Thank you for participating in our presentation!**
- **For follow-up questions and information, please contact:**
  - Louisiana Department of Health-Office of Public Health
  - Bureau of Community Preparedness
  - Volunteer Management Program
  - Website: [www.ldh.la.gov](http://www.ldh.la.gov) (search key word volunteer or LAVA)
- **Dr. Gail Hollins, RN Program Consultant**
  - Email: [gail.hollins@la.gov](mailto:gail.hollins@la.gov)
  - Telephone: 225-354-3508
- **Avis Richard-Griffin, Program Monitor**
  - Email: [avis.richard@la.gov](mailto:avis.richard@la.gov)
  - Telephone: 225-354.3517