

STATE HEALTH ASSESSMENT KEY FINDINGS

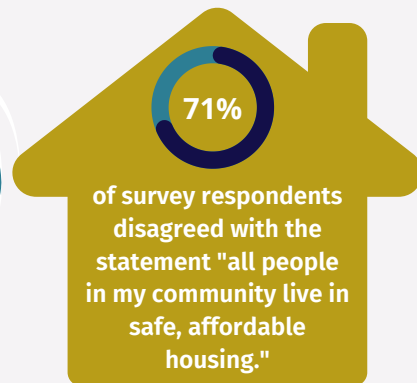
PRIORITY AREA COMMUNITY SAFETY

The Louisiana State Health Assessment (SHA) and State Health Improvement Plan (SHIP) are Louisiana’s roadmap to a healthier state. The SHA has identified community safety as a priority area for the SHIP. Information presented below is from the SHA community engagement activities, which included community leader interviews and a statewide survey. Health outcomes for the state can also be viewed on the SHA dashboard: www.LouisianaSHA.com

Community safety is achieved when residents, leaders, policy makers, and organizations work in partnership to ensure communities are free from a range of real and perceived risks (e.g., accidents, disasters, environmental hazards, infectious diseases, unsafe housing, and violence). This means empowering individuals, families, and communities, as well as educating, informing, and managing risks to increase overall safety—especially for the most vulnerable.

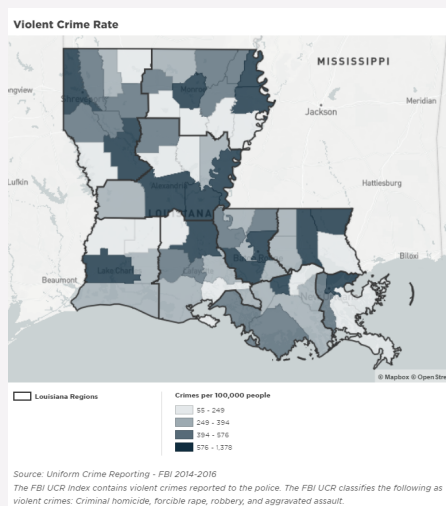
COMMUNITY ENGAGEMENT FEEDBACK

"Disasters have a terrible impact upon our communities because we leave behind the most vulnerable without the resources to recover."
- Community Leader, Region 6



STATEWIDE HEALTH OUTCOMES

Louisiana has the highest homicide rate in the US



Systemic disinvestment in people and places—including redlining, low-quality education, discriminatory hiring and employment practices, low-wage jobs, and mass incarceration contribute to homicide and violent crime rates. Violent crime rates in Louisiana are geographically dispersed throughout the state.

Louisiana has the 5th highest violent crime rate in the US

If you would like to get prepared prior to an emergency happening, please visit <https://getgameplan.org/make-a-plan/>.